

PYLE[®]
PyleUSA.com

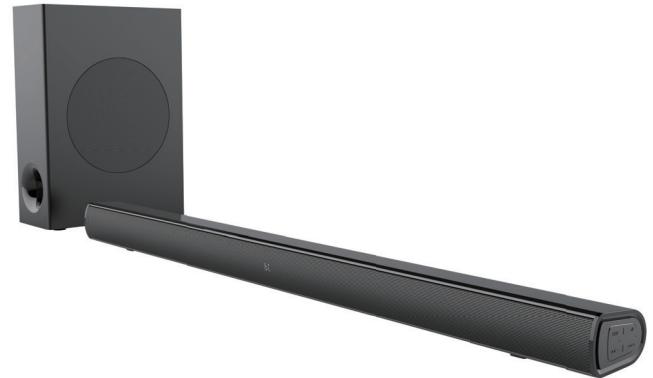
Questions? Comments?

We are here to help!

Phone: (1) 718-535-1800

Email: support@pyleusa.com

PYLE[®]
PyleUSA.com



PSBVSUB20

**Wave Base Wireless BT Streaming Tabletop
Soundbar Digital Speaker System**

with Remote Control, AUX (3.5mm), Optical In,
USB In & HDMI (ARC) & Coaxial

USER GUIDE

PLEASE READ THIS MANUAL CAREFULLY BEFORE OPERATION

Features:

- LED display
- Digital Amplifier with DSP Inside
- Designed to Sit Under Your Television
- Home Theater Tabletop TV Stand Mount
- Powerful and Compact Speaker Sound Bar System
- Built-in BT for Instant Wireless Music Streaming
- Works with All of Your Favorite BT-Enabled Devices (iPhone, Smartphone, iPod, MP3 Player, iPad, Tablet, PC, etc.)
- Digital Optical Audio Connector Jacks, USB Port, HDMI/ARC, COAX
- System Doubles as TV Speaker Base Entertainment System
- Ported Tube Design for Extended Bass Performance
- Full-Range Audio Spectrum Stereo Sound Reproduction
- Convenient Source Selection with LED Indicators
- Easy Touch Button Audio Select Control Center
- Aux (3.5mm) Input Connector Jack
- Easy-to-Use and Easy-to-Setup

Technical Specs:

- RMS Power Output: 30 Watt (15 x 2) + 60-Watt x 1
- Audio Output: 2.1CH
- Wireless BT Version: 5.0
- Wireless BT Range: 50 Feet
- Speaker Impedance: $8\Omega \times 2 + 4\Omega \times 1$
- Inputs: 3.5mm (AUX), Digital Optical Audio Connector Jacks, USB Port, HDMI/ARC, COAX
- Power Supply: Soundbar: AC100-240V~50/60Hz, DC22V/2A
- Subwoofer: AC100-240V~50/60Hz
- Frequency Response: 45Hz - 20kHz (+/- 6dB)
- Input Sensitivity: 450mV
- S/N: 63dB
- THD: 1%
- Soundbar Dimensions: 34.84" x 3.39" x 2.20" -inches
- Subwoofer Dimensions: 4.72" x 8.66" x 15.75" -inches

What's in the Box:

- 2.1 TV Soundbar
- Audio Connection Cables
- Remote Control
- Optical Cable
- 22V/2A Power Adapter
- Power Cable

IMPORTANT SAFETY INSTRUCTIONS

• Read these instructions.

- Keep these instructions.
- Heed all warnings.
- Follow all instructions.
- Do not use this apparatus near water.
- Clean only with dry cloth.
- Do not block any ventilation openings.
Install in accordance with the manufacturer's instructions.
- Do not install near any heat sources such as radiators, heat registers, stoves, or other apparatus (including amplifiers) that produce heat.
- Do not defeat the safety purpose of the polarized or grounding-type plug. A polarized plug has two blades with one wider than the other. A grounding type plug has two blades and a third grounding prong. The wide blade or the third prong are provided for your safety. If the provided plug does not fit into your outlet, consult an electrician for replacement of the obsolete outlet.
- Protect the power cord from being walked on or pinched particularly at plugs, convenience receptacles, and the point where they exit from the apparatus.
- Only use attachments/accessories specified by the manufacturer.
- Unplug this apparatus during lightning storms or when unused for long periods of time.
- Refer all servicing to qualified service personnel. Servicing is required when the apparatus has been damaged in any way, such as power-supply cord or plug is damaged, liquid has been spilled or objects have fallen into the apparatus, the apparatus has been exposed to rain or moisture, does not operate normally, or has been dropped.
- To reduce the risk of fire or electric shock, do not expose this device to rain, moisture, dripping, or splashing, and no objects filled with liquids, such as vases, shall be placed on it.

Using close to a TV or computer

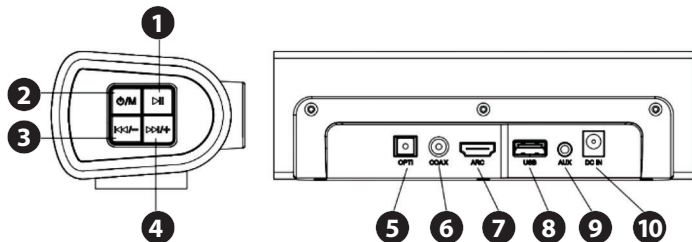
Some older TVs and computer monitors are magnetically sensitive devices and as such are likely to suffer discoloration or picture distortion when conventional speakers are placed nearby. If discoloration problems persist, try moving the soundbar away from your TV or monitor.

Placement

- Sensitive to extreme temperatures and humidity. Do not put it in locations subject to direct sunlight or in humid places, such as near an air conditioner, humidifier, bathroom, or kitchen.
- Do not put water or other liquids close to the soundbar. If liquid is spilled over the soundbar, it may be damaged.
- The soundbar should be placed on a sturdy, flat surface that is free from vibration, or mounted on a wall. Do not put the soundbar on an uneven or unstable surface, where it may fall and cause damage.

This user manual explains how to correctly install, operate, and get the best performance from your Home Theater Wireless BT Soundbar Speaker. Read this user manual carefully before installing your system, and then keep it handy for quick reference.

FUNCTION DESCRIPTION



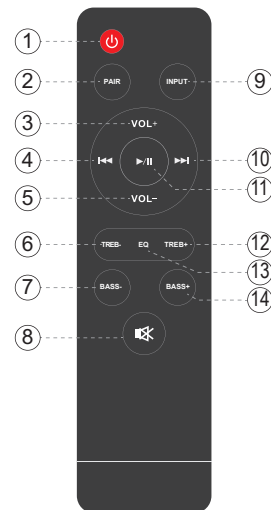
FUNCTION DESCRIPTION

1. **Play/Pause** the music
2. **Power:** Press and hold to switch **ON/OFF** the sound bar.
Mode: Short press to change between modes **AUX IN/OPTICAL/BT/COAX**.
3. **VOL-/PREV:** Press and hold to decrease the volume, and press to skip to previous track.
4. **VOL+/PREV:** Press and hold to increase the volume, and press to skip to next track.
5. **Optical** Port.
6. **COAX** Port.
7. **HDMI (arc)** In Port.
8. **USB** Port.
9. **AUX** in Port.
10. **DC** In Port.

Note: *The RC sensor is at the front of the sound bar.*

REMOTE CONTROL FUNCTIONS

1. **Power:** Switch **ON/OFF** the sound bar.
2. **PAIR:** Connects/disconnects Wireless BT
3. **VOL +**
4. **Previous track**
5. **VOL -**
6. **TREB - :** Reduce the amount of treble.
7. **BASS - :** Reduce the amount of bass.
8. **Mute**
9. **INPUT:** Input signal mode conversion.
10. **Next track**
11. **Play/Pause**
12. **TREB + :** Increase the amount of treble.
13. **EQ:** Equalizer button.
14. **BASS + :** Increase the amount of bass.



OPERATION INSTRUCTION

HOW TO CONNECT SOUNDBAR TO SUBWOOFER BY WIRELESS BT TECHNOLOGY:

1. Plug power cable to subwoofer, red LED keeps flashing. Plug the DC port of the 22V/2A adapter into the sound bar, the display says "--".
2. Press and hold the "⏻/M" key for 2 seconds, then release it. After 3 seconds, it will automatically enter BT mode with sound alerts. The LED displays "BT" and keeps flashing.
3. Press and hold the "▶||" key for 3 seconds.
You will hear the sound "Left Channel", "Right Channel" which means the bar and subwoofer is successfully connected by wireless BT.
Now You can play music by USB, AUX, BT etc.

Note:

The second time turning ON the subwoofer and soundbar:

Press the "⏻/M" key for 2 seconds and then release it.

After 10 seconds, you will hear the sound "Left Channel", "Right Channel".

Sound bar will automatically connect to subwoofer.

WIRELESS BT CONNECTION

1. Put the sound bar near the BT device, iPhone, Smartphone, iPod, MP3 Player, iPad, Tablet, PC, etc.
2. Turn ON the BT function of the device, search for "Pyle". Connect to it once found. If code is needed, press "0000". An alert will appear when connected, and the The LED display BT lights up and stops flashing.
3. The sound bar will automatically reconnect to the last paired device when switched ON, If it doesn't connect, the sound bar will enter pairing mode.

OPTICAL FUNCTION

1. Plug the optical cable into the optical port and the other side to TV or other device with optical/digital port.
2. Short press "⏻/M" into optical mode, LED lights (white) will light indicating "OP", music will start playing.

COAX FUNCTION

1. Plug the COAX cable into the COAX port and the other side to your TV or other device with COAX/digital port.
2. Short press "⏻/M" key into "COAX" mode, LED lights (white) indicating "CO", music will start playing.

AUX IN FUNCTION

1. Put the 3.5mm cable into the AUX-in port and the other side into the mobile device.
2. Short press "⏻/M" into "AU IN" mode, with indication of AU.
3. Hold the "VOL-/PREV" on the sound bar to decrease the volume.
4. Hold the "VOL+/NEXT" on the sound bar to increase the volume.

USB FUNCTION

1. Directly insert the USB card.
2. Press "▶||" on Soundbar or "▶||" on remote control to play/pause.
3. Press "◀◀/V-/▶▶/V+" or "◀◀/▶▶" to go to previous/next song.

ARC IN FUNCTION

Connection with HDMI (ARC) cable, e.g. to the HDMI ARC connection of the television set, DVD player.

California Prop 65 Warning

⚠️ WARNING:

This product contains Nickel carbonate which is known to the state of California to cause cancer birth defects and other reproductive harm. Do not ingest.

For more info go to: www.P65warnings.ca.gov