



VEVOR Y428/Y428BT

USER GUIDE

VEVOR®



NEED HELP? CONTACT US!

Have product questions? Need technical support? Please feel free to contact us:

✉ CustomerService@vevor.com

This is the original instruction, please read all manual instructions carefully before operating. VEVOR reserves clear interpretation of our user manual. The appearance of the product shall be subject to the product you received. Please forgive us that we won't inform you again if there is any technology or software updates on our product.

CONTENTS

| | |
|---|----|
| 1. Introduction..... | 01 |
| 2. Item Overview | 02 |
| 3. Connect to PC/MAC | 03 |
| 4. Label Setup | 05 |
| 5. Driver Installation | 07 |
| 6. MacOS & Windows Printing Setup | 11 |
| 7. Wireless installation..... | 15 |
| 8. User tips | 17 |
| 9. LED status..... | 18 |
| 10. Feeder Button Instructions..... | 19 |
| 11. Safety Notices | 20 |
| 12. Maintenance..... | 20 |
| 13. Specifications..... | 21 |

INTRODUCTION

Congratulations on your purchase of Vevor Printer. Vevor is your loyal business partner offering commercial solutions to batch labels printing.

Please take a moment to read this user guide as incorrect operation may result in unsatisfactory print quality, reduced user experience, or even damage to your printer or injury.

VEVOR Y428/Y428BT is a thermal label printer which uses thermal label media without ink, toner and ribbon. It can print various labels for logistics, pricing, barcodes, QR codes, shipping address, badges, etc.

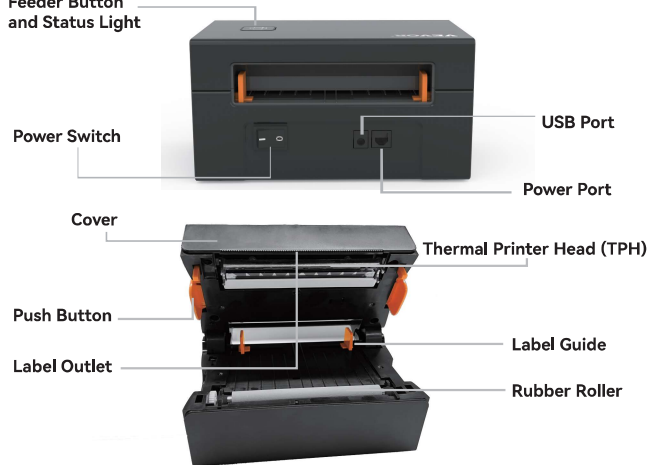
Original instructions for Thermal Label Printer,please read all manual instructions carefully before operating. VEVOR reserves clear interpretation of our user manual. The appearance of the product shall be subject to the product you received. Please forgive us that we won't inform you again if there is any technology or software updates on our product.

ITEM OVERVIEW

Packing List:

| | | |
|-----------------------------|--|-----------------|
| 1x VEVOR Label Printer | 1x User Guide | 1x Service Card |
| 1x Power Cable and Adapter | 1x USB Stick(Contains drivers forMacOS& Windows) | |
| 1x USB 2.0 to USB C Adapter | 30x Free Fanfold Labels | |
| 1x USB 2.0 Printer Cable | | |

Feeder Button and Status Light



Must turn off the switch before you plugging the power cable into power port each time or it may cause sparks!

02

3. Make sure the power adapter is tightly connected, then connect the power cable to the printer's power port and the electrical sockets.



4. Turn the power ON (Press down "-" means Power ON), now you will see the top feeder button flashing.



Must turn off the switch before you plugging the power cable into power port each time or it may cause sparks!

04

CONNECT TO YOUR PC/MAC

- 1.Ensure the power is OFF(Press down"O" means Power OFF)



2. Connect the USB cable.

(Special Note: For Windows users, please connect the same USB port on your computer to avoid producing unwanted duplicates of Vevor printer in your system).



03

LABEL SETUP

Vevor is capable of working with labels in various sizes, and it needs to learn your label properties before its first use.

To initiate **Automatic Label Identification** and run **Intelligent Label Study**, please follow these steps:

1.Power On

Turn on the power and wait for about 5 seconds until the printer is initialized.

2.Automatic Label Identification

Insert the label from the backside of the printer, the printer will grab the label and move back and forth, then stop with the green light on. Not a single label will be wasted during this procedure.

It's suggested to adjust the label guide to match the width of the label if necessary before the label is pushed in.



05

3.Intelligent Label Study

Press and hold the feeder button for about 3 seconds until you hear one beep then release, the label will move back and forth several times to study the label size, then you can start printing.

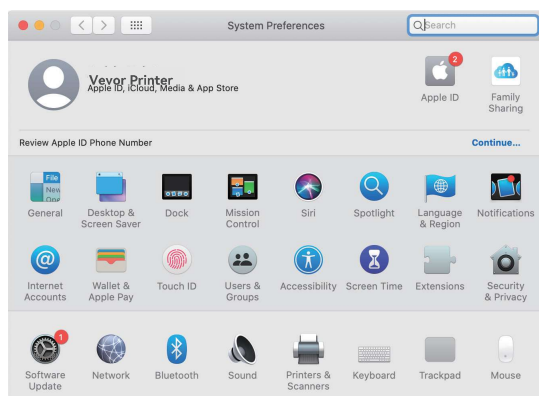


Since the printer needs to measure the length of the thermal paper, a stack of labels with at least 3 sheets is required to complete the process.

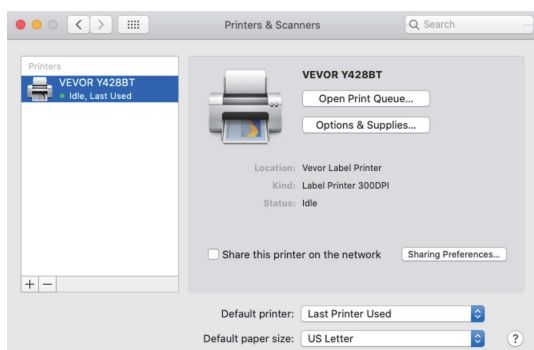


06

4.Open "System Preferences",and click "Printers & Scanners".



5.Power on the printer, you will see "VEVOR Y428/Y428BT" in the list,Now you can print labels.



08

DRIVER INSTALLATION

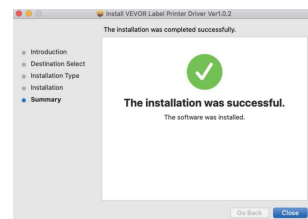
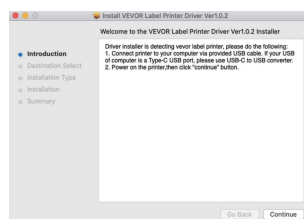
5.1 Driver Installation for MacOS

Please download the driver for Vevor Y428/Y428BT from our official website <https://www.vevor.com/pages/download-center-label-printer>,or find it from the USB stick that comes with the package.

1.Double-click the file "Vevor-Mac-Driver-Latest.pkg".

2.Click "Continue" and follow the on screen instructions.

3.Click "Close" to finish.



07

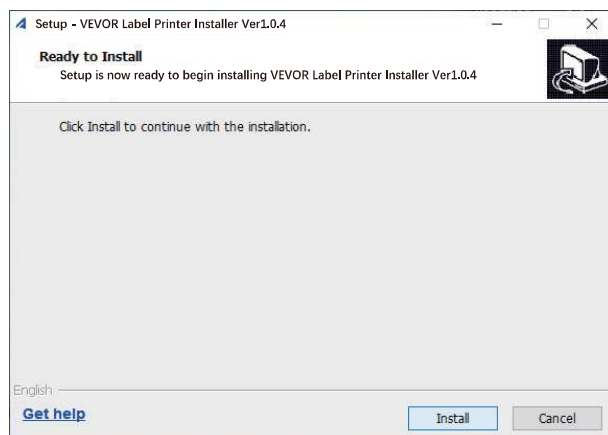
5.2 Driver Installation for Windows

Please download the driver for Vevor Y428/Y428BT from our official website <https://www.vevor.com/pages/download-center-label-printer>,or find it from the USB stick that comes with the package.

1. Open the "Vevor-Windows-Driver-Latest.exe" file with a double-click to start the installation process.

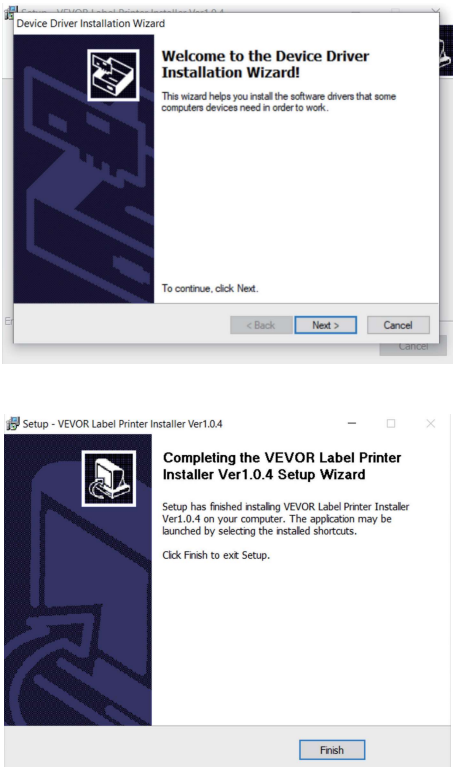
If the file is named "Vevor-Windows-Driver-Latest.zip", you need to decompress it to the .exe file.

2. Click "Install" and follow the onscreen instructions.



09

3.Click “Next”and “finish” to complete the driver installation.



10

MACOS &WINDOWS PRINTING SETUP

Vevor Y428/Y428BT is set for the most popular size of 4x6 inches (102 x 152mm) by default, therefore you need to make sure that the "Paper Size" is appropriately set in your computer, and corresponding with the label papers you are using. Please set as follows:

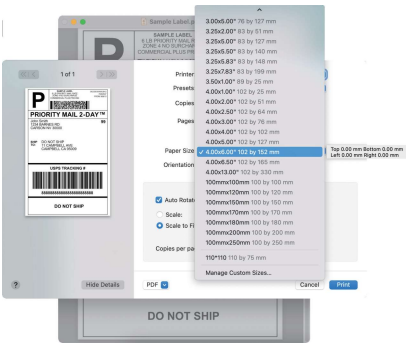
6.1 MacOS Printing Setup

1.Open the PDF file named "Sample Label.pdf" which can be found in USB stick;
Select "File"→"Print" (take Preview as an example).



11

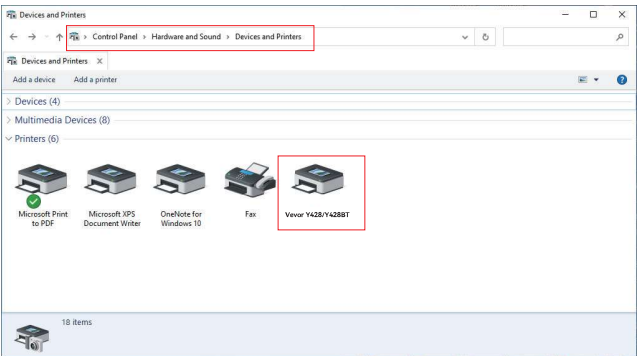
2. Choose 4.00x6.00" under "Paper Size" drop-down menu.



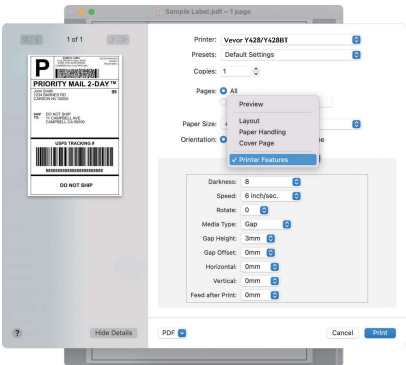
6.2 Windows Printer Setup

Take Windows 10 as an example:

1. Find "Vevor Y428/Y428BT" along the path: Control Panel→Hardware and Sound→Devices and Printers



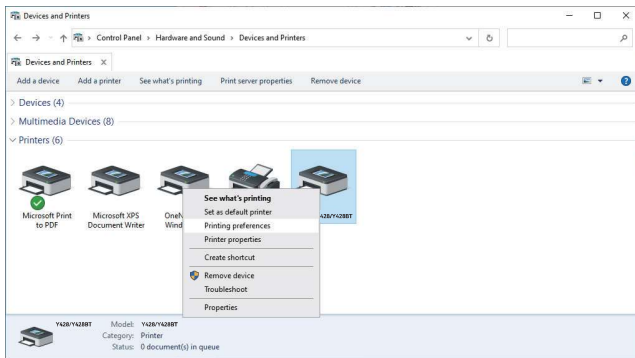
3.Select "Printer Features", then change the settings of printer, e.g Speed, Darkness, Rotate.



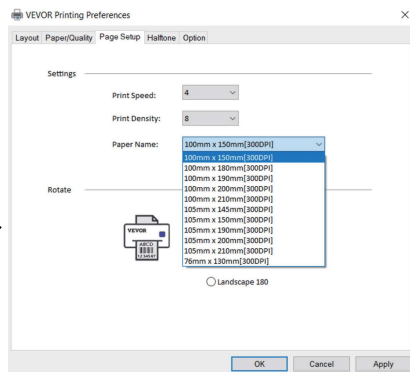
12

13

2. Right click on "Vevor Y428/Y428BT", choose "Printing Preference".

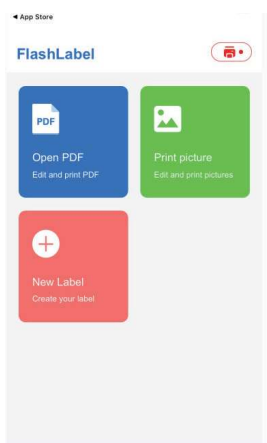


3. Click "Page Setup" and choose the proper size of your label, and make sure the chosen size is corresponding to the label paper you are about to use.

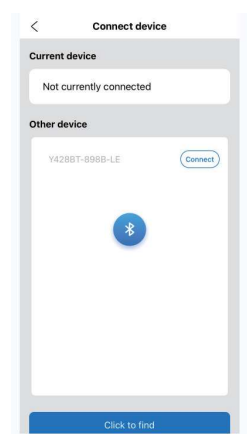


14

2. Open "FlashLabel" run the app and click the red printer symbol on the upper right to use device Wireless.



3. Connect Wireless to pair the printer. (Different printers have different device names to avoid connected wrong.)



Note:

Android users need to enter "0000" in the Wireless settings for Wireless pairing before connecting to the printer. (Setting < Wireless < Choose the printer < Pair)



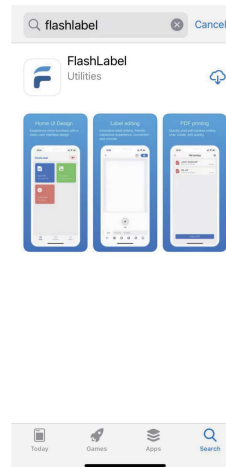
4. Load the file to print (PDF, Photo, Customize labels can be printed).

16

WIRELESS INSTALLATION

Wireless function only works with Y428BT.

1. Please search and download "FlashLabel" on App Store (iOS) or GooglePlay (Android), and then follow the remainder of the app. You can also scan QR Code below to download APP.



iOS



Android

15

USER TIPS

1. When you load the labels, the peeling-off side should face up. Or it would cause printing blank.
2. Make sure there are no particles on the surface of labels to avoid damages to the TPH (Thermal Printer Head).
3. For Windows users, please keep using the same USB Port on your computer to avoid producing unexpected duplicated copies of the printer on your computer.
4. The label size of the Vevor Y428/Y428BT printer is default to 4x6" (102mm x 152mm). Each time you change different label sizes, please run the Intelligent Label Study process before printing.
5. In case labels keep coming out unexpectedly, just press the feeder button to pause the printer, and clear the printing job from your computer.
6. If there are white spots on printed labels, it indicates that the printer head needs cleaning. Stop printing, and clean the TPH (Thermal Printer Head) after cooling to avoid burns.
7. When the label is jammed accidentally, please open the lid and take out the jammed labels slowly and patiently. The printer will resume after cleaning.

If you have any other issues, please contact us via the following methods: Email: CustomerService@vevor.com

17

LED STATUS

| Light Status | Description | Solution |
|--|---|---|
| Green | Normal | (You are ready to print.) |
| Blue | Wireless connected | You are ready to print using wireless(Applicable to Y428BT only). |
| Flashing Red Fast (Every second) | This happens when the cover is not closed. | Close the lid properly |
| Flashing Red Slowly (Every 2 seconds) | This happens due to paper shortage. | Load Labels |
| Flashing Red and Green (Every second) | This happens when the printer head is overheated. | Wait until it cools down, the printing job will resume itself. |
| Light off & Buzzer rang | Low voltage | Switch to 24V adapter |

If you have any other issues, please contact us via the following methods: Email: CustomerService@vevor.com

18

FEDDER BUTTON INSTRUCTIONS

- Press once: Feed a blank page / Pause / Resume
 - (1) When the printer is in ready status and there are no holding jobs, press the feeder button once, the printer will feed a blank page.
 - (2) When the printer is running, press once will pause the job, press once again will resume the job. (Although it is not recommended, if you want to urgently stop an unwanted printing task, you may turn off the power directly and don't forget to cancel the print task from the computer at the same time).
- Press and hold the feeder button for about 3 seconds until you hear one beep, Vevor will run the Intelligent Label Study process. This process is recommended each time you change the label sizes.
- Press and hold the feeder button for about 5 seconds until you hear two beeps. Vevor will print a technical test page. If the test page looks good, it indicates that the printer head is working properly.
- Press and hold the feeder button for about 15 seconds until you hear three beeps. This will reset the printer to the factory setting. This process is harmless to the printer and can be used if you want the printer to recover from an unknown error.



19

SAFETY NOTICES

- DO NOT** touch the printer head after use.
- DO NOT** disassemble or repair the unit by yourself.
- USE ONLY** approved accessories.
- Keep the printer **away from** water, fire, or other objects that could destroy the components.
- Keep the printer **away from** children.
- DO NOT** use the printer if you find any irregularities which could result in electrocution or fire.
- Please **unplug the power** when not in use for a long time.

MAINTENANCE

Printer Head Cleaning Steps:

- (1) Please make sure that the printer is powered off and cooling down before cleaning;
- (2) Push the Push Button on the left side to open the printer lid;
- (3) Use the Printer Head Cleaning Wipes to gently apply onto the Thermal Printer Head (no water or other liquid should be applied).

20

SPECIFICATIONS

| | |
|-----------------------|---|
| Model | Y428/Y428BT |
| Printing Method | Direct Thermal |
| Interfaces | USB Cable |
| Resolution | 300dpi |
| Max Printing Speed | 150mm/s |
| Power Adapter | 24V/2.5A |
| N. weight | 2.86lbs/1.3kg |
| G. weight | 3.45lbs/1.57kg |
| TPH Printing Life | 30km |
| Paper Width | 40-110mm(±2mm) |
| Paper Thickness | 0.06-0.25mm |
| Paper Height | NO Limitations |
| Storage Environment | Temperature: -20 to 80 °C Humidity: 5-95% (non condensing) |
| Operating Environment | Temperature: -10 to 50 °C Humidity: 10-90% (non condensing) |
| Dimensions | L175*W109*H94mm |

21

DISPOSAL

This product is subject to the provisions of European Directive 2012/19/ EC. The symbol showing a wheeled bin crossed through indicates that the product requires separate refuse collection in the European Union. This applies to the product and all accessories marked with this symbol. Products marked as such may not be discarded with normal domestic waste, but must be taken to a collection point for recycling electrical and electronic devices.



PAY ATTENTION TO

Pay attention to: This device complies with Part 15 of the FCC Rules. Operation is subject to the following two conditions: (1) This device may not cause harmful interference, and (2) this device must accept any interference received, including interference that may cause undesired operation.

22

EU Importer: WAITCHX

Address: 250 bis boulevard Saint-Germain 75007 Paris

UK Importer: FREE MOOD LTD

Address: 2 Holywell Lane, London, England, EC2A 3ET



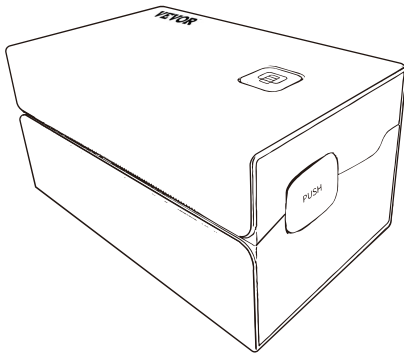
EUREP UK LTD
UNIT 2264, 100 OCK STREET,
ABINGDON OXFORDSHIRE ENGLAND OX14 5DH



EUREP GmbH
Unterlettenweg 1a, 85051 Ingolstadt,
Germany

23

VEVOR®



Manufacturer: Xiamen Print Future Technology Co., LTD.

ADDRESS: Area C, Room 502, No. 17 Kengping Road, GuanKou Town, Jimei District, Xiamen City

Enjoy your printing!

If you have any questions, issues or concerns about this product, please contact VEVOR for support.

E-mail: CustomerService@vevor.com

24

VEVOR®

E-mail: CustomerService@vevor.com

FCC Warning Statement: Changes or modifications to this unit not expressly approved by the party responsible for compliance could void the user's authority to operate the equipment. This equipment has been tested and found to comply with the limits for a Class B digital device, pursuant to Part 15 of the FCC Rules. These limits are designed to provide reasonable protection against harmful interference in a residential installation. This equipment generates, uses and can radiate radio frequency energy and, if not installed and used in accordance with the instructions, may cause harmful interference to radio communications. However, there is no guarantee that interference will not occur in a particular installation. If this equipment does cause harmful interference to radio or television reception, which can be determined by turning the equipment off and on, the user is encouraged to try to correct the interference by one or more of the following measures:

- Reorient or relocate the receiving antenna.
- Increase the separation between the equipment and receiver.
- Connect the equipment into an outlet on a circuit different from that to which the receiver is connected.
- Consult the dealer or an experienced radio/TV technician for help.

This device complies with Part 15 of the FCC Rules. Operation is subject to the following two conditions: (1) this device may not cause harmful interference, and (2) this device must accept any interference received, including interference that may cause undesired operation.

FCC Radiation Exposure Statement

The antennas used for this transmitter must be installed to provide a separation distance of at least 20 cm from all persons and must not be co-located for operating in conjunction with any other antenna or transmitter.