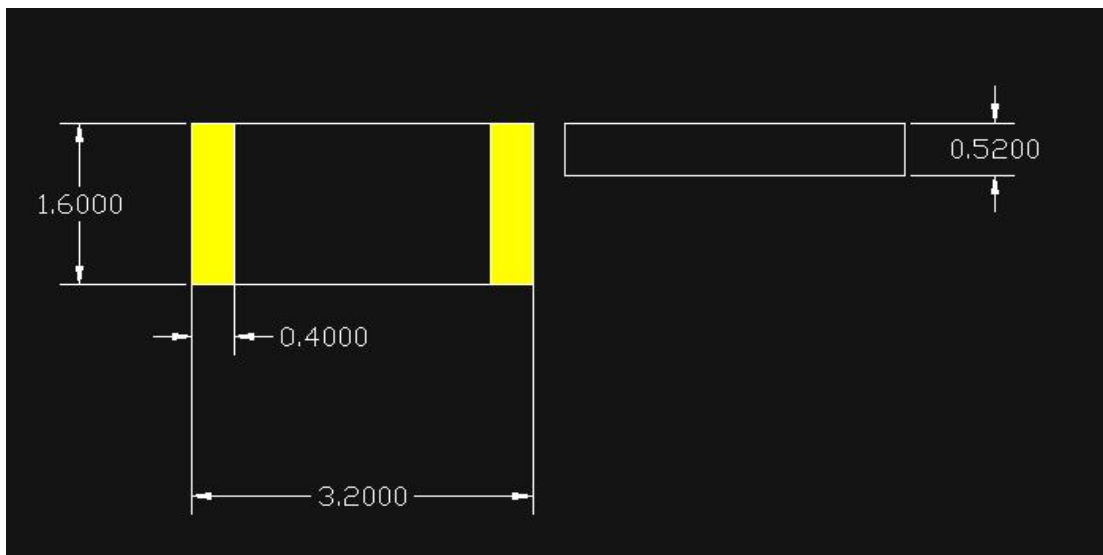


ANTENNA TEST REPORT

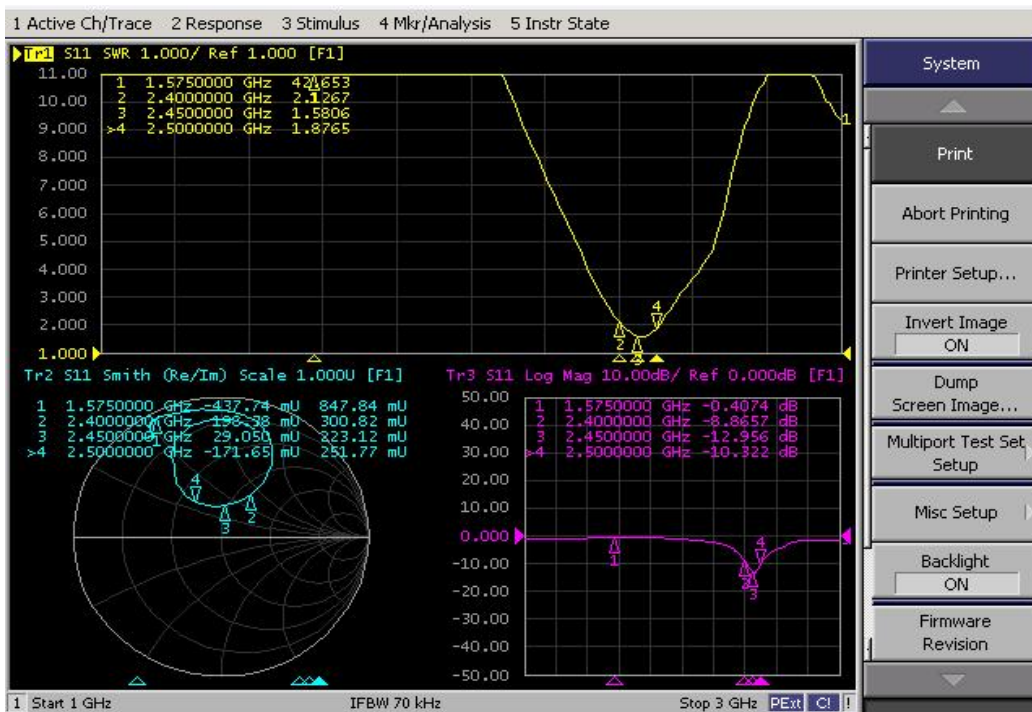
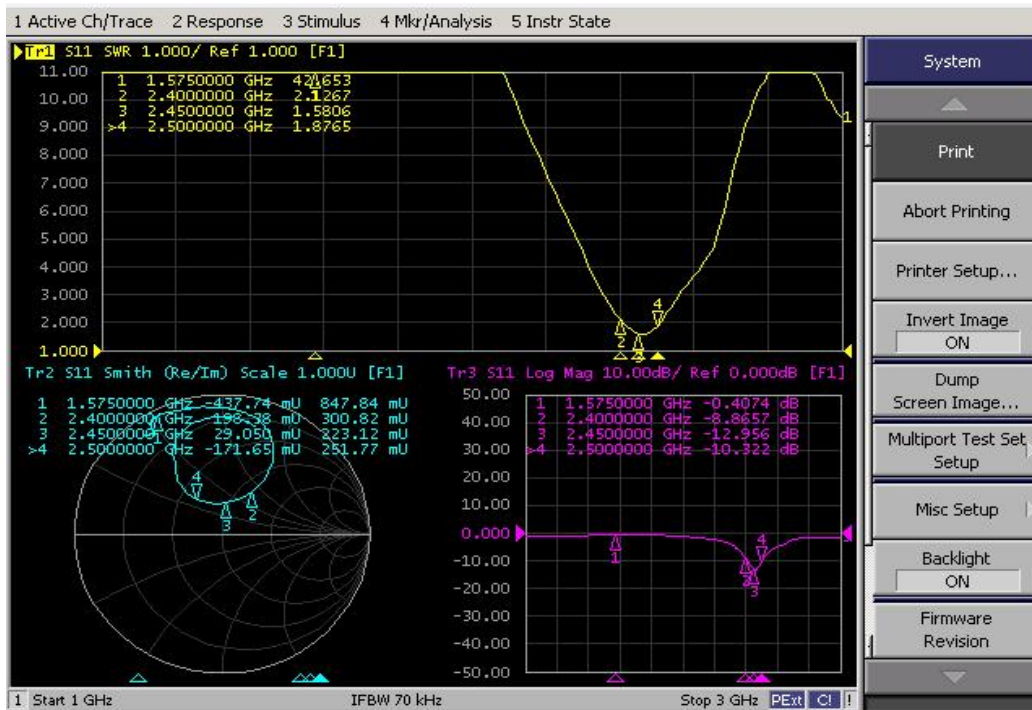
1. Electrical Characteristics

Item	Specification
Type	PIFA ceramic Antenna
Central frequency	2.45 GHz
Bandwidth	78 MHz (Typical value)
Gain	0.64 dBi
Polarization	Linear
VSWR	2.12max.
Azimuth Bandwidth	Omni-directional
Impedance	50Ω
Rated Power (max.)	2dBm
Maximum Input Power	10dBm
Operation Temperature	-40 , C ~ +85 , C

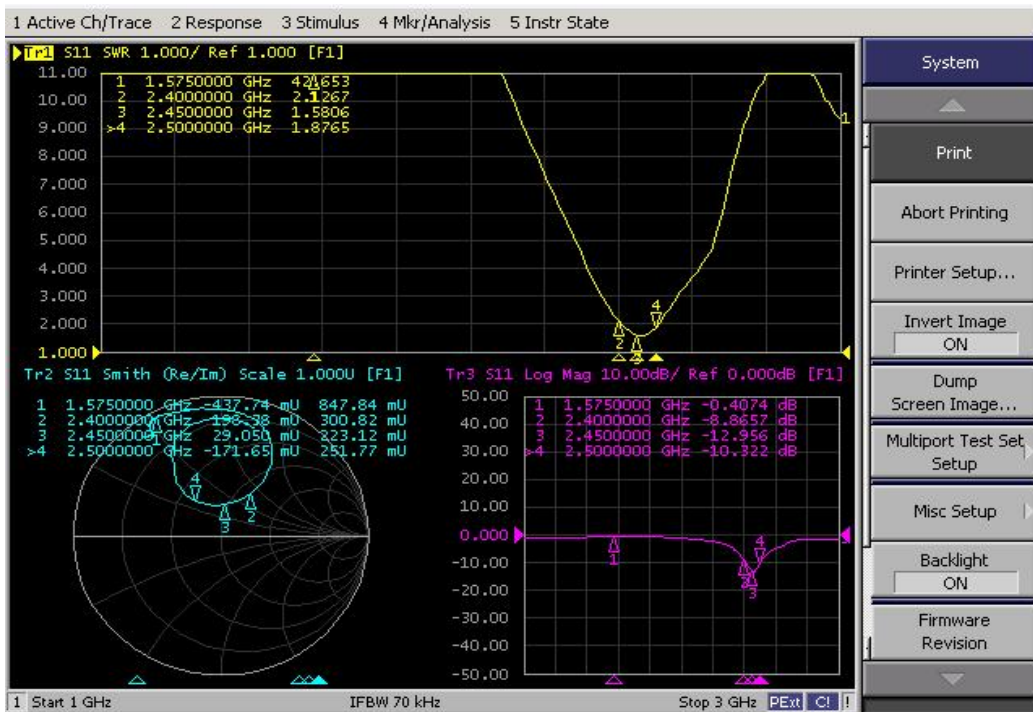
2. The suggestion of matching circuit



3. SWR & Smith chart



Frequency(GHz)	S11(dB)
2.402	-8.86
2.441	-12.95
2.480	-10.32



Frequency(GHz)	VSWR
2.402	2.12
2.441	1.50
2.480	1.87

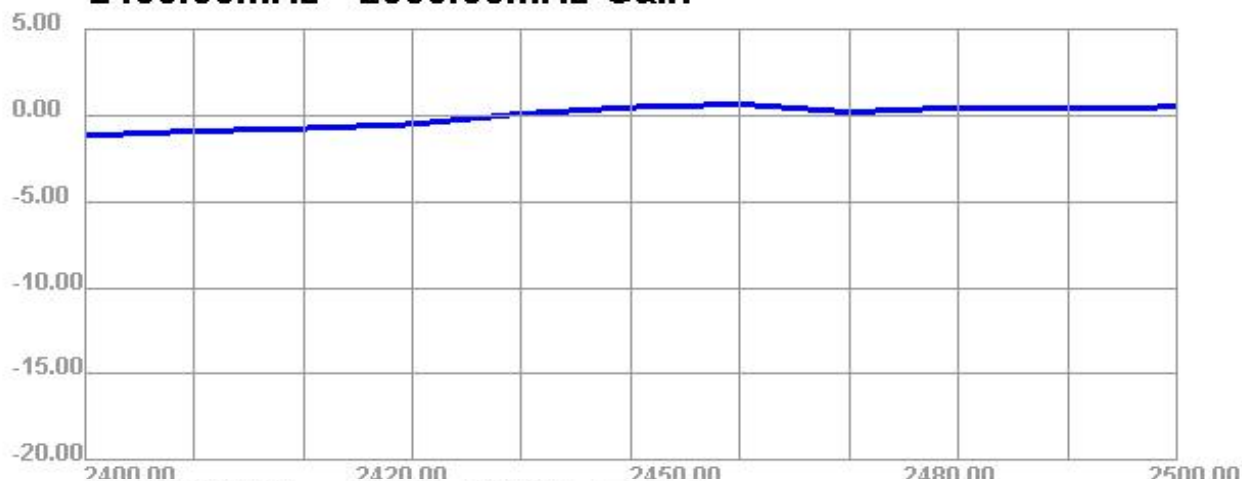
The reference:

Return Loss				
VSWR				
Return Power Ratio				

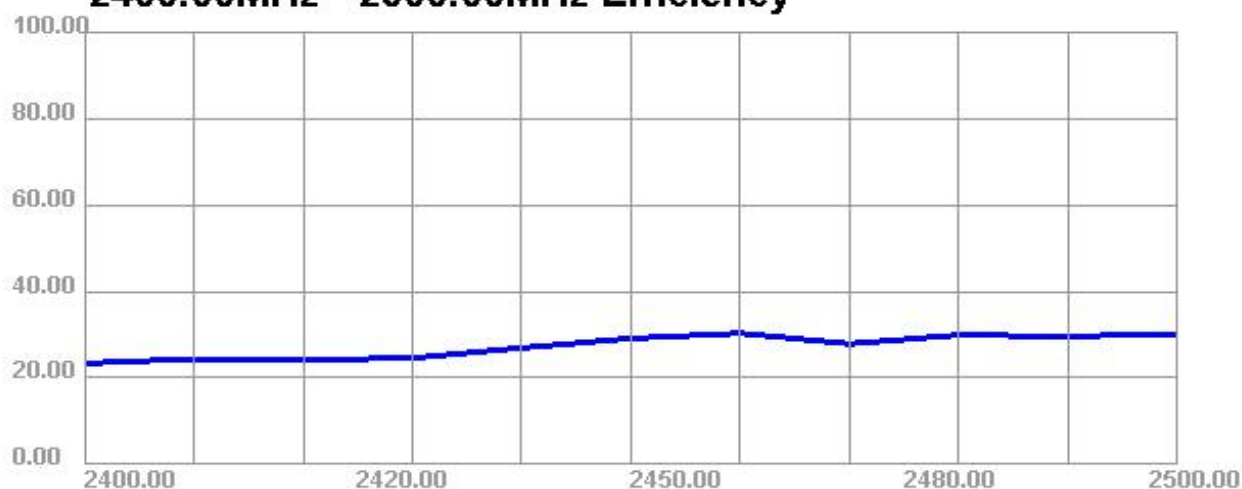
4. Gain & Efficiency:

Passive Test For BT										
Freq (MHz)	Effi (%)	Effi (dB)	Gain (dBi)	Gain (dBd)	UHis (%)	DHis (%)	Max (dB)	Min (dB)	Directivity (dBi)	
2400	23.4	-6.31	-1.18	-3.33	0	0	-1.18	-15	6.31	0
2410	24.41	-6.12	-0.92	-3.07	0	0	-0.92	-13	6.12	0
2420	24.2	-6.16	-0.76	-2.91	0	0	-0.76	-13	6.16	0
2430	24.62	-6.09	-0.51	-2.66	0	0	-0.51	-13	6.09	0
2440	26.96	-5.69	0.09	-2.06	0	0	0.09	-13	5.69	0
2450	29.16	-5.35	0.46	-1.69	0	0	0.46	-13	5.35	#
2460	30.35	-5.18	0.64	-1.51	0	0	0.64	-13	5.18	#
2470	27.9	-5.54	0.19	-1.96	0	0	0.19	-13	5.54	#
2480	29.95	-5.24	0.44	-1.71	0	0	0.44	-13	5.24	#
2490	29.61	-5.29	0.38	-1.77	0	0	0.38	-14	5.29	#

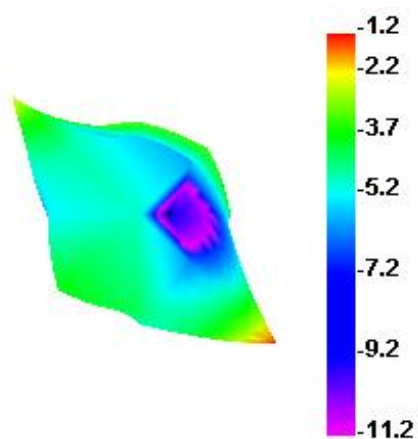
2400.00MHz - 2500.00MHz Gain



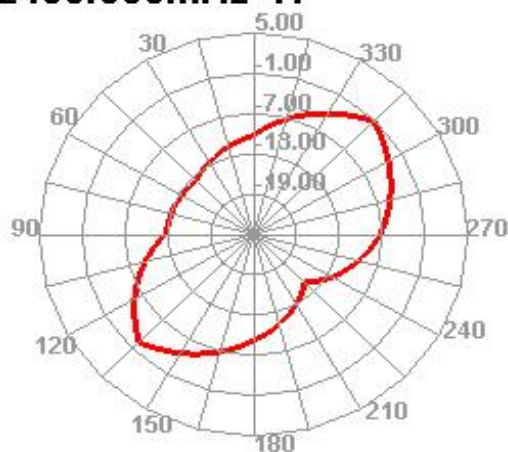
2400.00MHz - 2500.00MHz Efficiency



2400.000MHz



2400.000MHz H

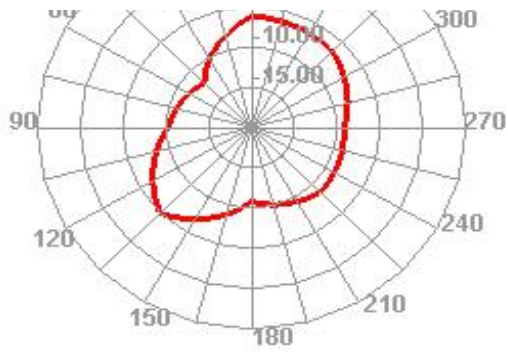


2400.000MHz E1

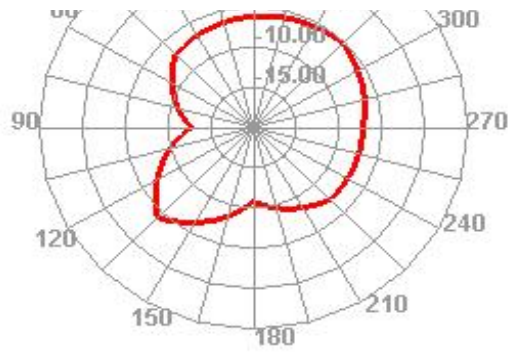
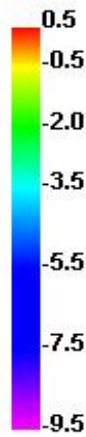
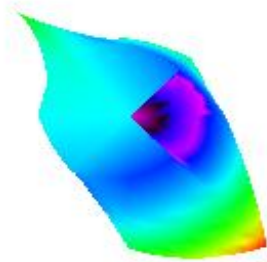


2400.000MHz E2

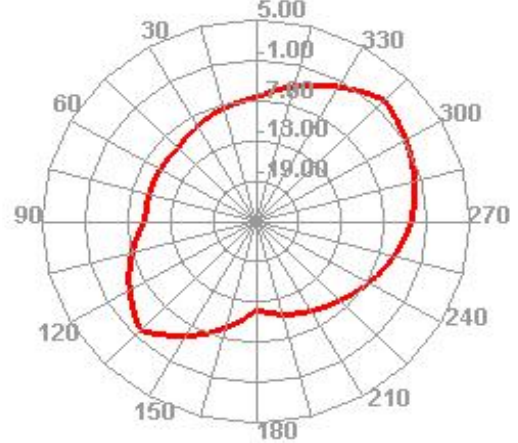




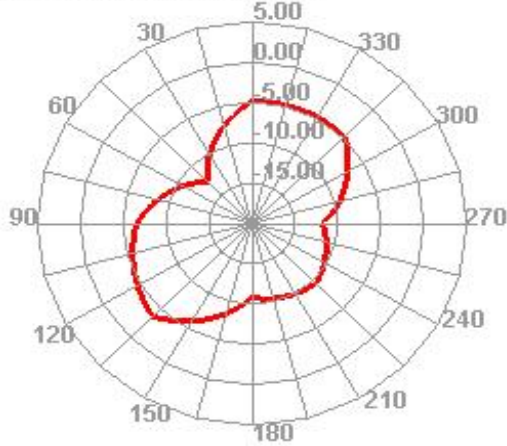
2450.000MHz



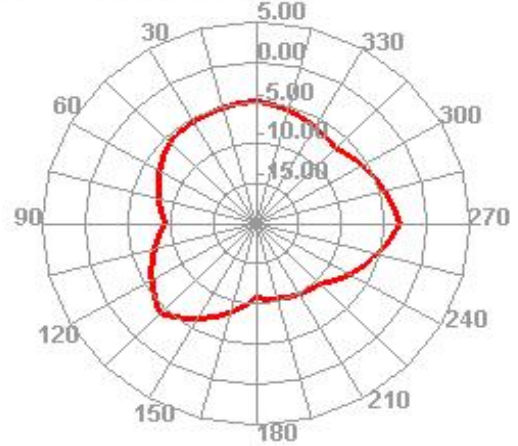
2450.000MHz H



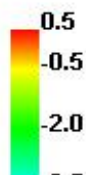
2450.000MHz E1



2450.000MHz E2

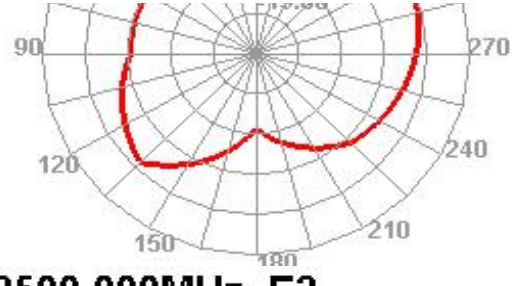
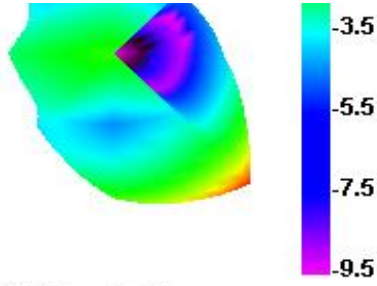


2500.000MHz



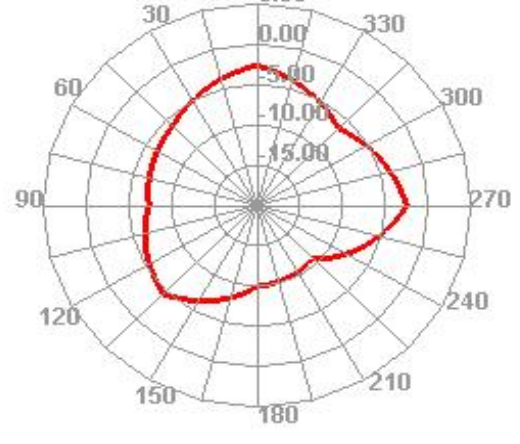
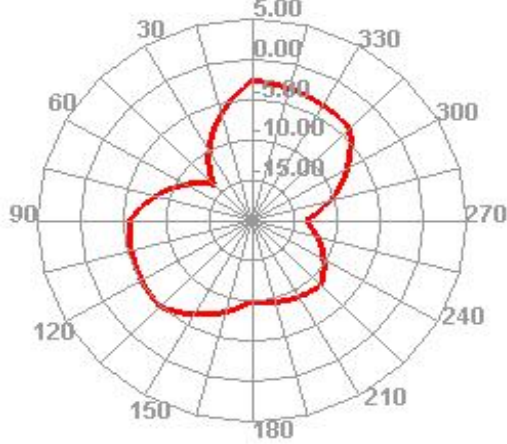
2500.000MHz H





2500.000MHz E1

2500.000MHz E2



5.The suggestion of matching circuit

深圳市力同创科技有限公司

Shenzhenshi Li Tongchuang Technology Co., Ltd

地址：深圳市宝安区西乡街道金海路10号华盛辉商业大厦6楼6

Beamwidth (3dB)	
6.31	0
6.12	0
6.16	0
6.09	0
5.69	0
5.35	45
5.18	45
5.54	45
5.24	45
5.29	45

