

User's Manual



Pls check the smart lock according to the following list before installation

Outside smart lock panel X 1PC	Inside smart lock panel X 1PC
M1 Card X 2PCS	Mechanical key X 2PCS
6068 Mortise X 1PC	Frame plate for mortise X 1PC
Spindle 8x8x120MM x 1PC	Tube connection X 3PCS
5CM screws x 1PC	7CM screws x 1PC
9CM screws x 1PC	5 x 10MM with cap screws x 2PCS
Screws for Mortise and plate x 1BAG	Manual x 1PC

Key technologies and parameters:

Information	Feature	Parameters
Power	Battery	6V DC (4PCS 1.5V AA Alkaline Battery)
	Standby current	≤50μA
	Working current	200MA
	Low Battery Alarm	4.8V
Unlock	Capacity	≤ 300nos. (5nos. administrators, 295nos. normal users)
Fingerprint	Sensor	Semi conductor
Code	Code numbers	6~10nos. Fake Pin Code is available (within 20nos.)
Working temperature		-10℃ ~ 60℃

INSTALLATION GUIDE AND NOTE

NOTE

1. Installation Tool:

Correct hole no need to change	Cross Screwdriver
Need to re drill hole or make the hole bigger	Cross screwdriver, hand held hole opener, chisel, Vice, hand held cutter

2. Spindle length: Door thickness + 40mm

3. How to change the lock handle to left opening or right opening: in the outside and inside smart lock panel, you will find the handle can turn to left or right. If the door is right opening, then put the handle to be right side, and use 5x10mm with cap screws to fix the handle. And the point should be point to the bottom (please kindly double check before install outside smart lock panel)

4. check the hole is same as our mortise hole, the spindle hole is 35mm and the hole for two tube connection screws is 30mm

INSTALLATION GUIDE

1. install the mortise on the door and frame plates on the frame with the 1 bag screws. (you can change the latch direction according to right or left opening)
2. screw 2pcs the tube connections on the outside smart lock panel
3. insert spindle to the mortise handle hole
4. put the cable of outside lock panel from door outside to door inside through the lock hole, install the outside lock panel on the outside of door and connect the spindle to the lock handle hole
5. connect the cable with the cable of inside smart lock panel, then put all the cable into door hole (pls make sure that there is nothing press cable otherwise the lock will not be in good function)
6. use 5cm/7cm/9cm screws to screw the inside lock panel to the door with tube connections on the outside smart lock panel.
7. before tighten the screws, Pls make sure the smart lock is parallel to the door edge, outside lock panel and inside lock panel are on the same horizontal line.
8. Pls lift up the hanle to lock the lock, and use the fingerprint, card, password and keys to unlock the lock. If everything is all right, then finish installation.
9. It is better to install by two people in avoid that the smart lock will fall down while installation

OPERATION NOTE AND GUIDE

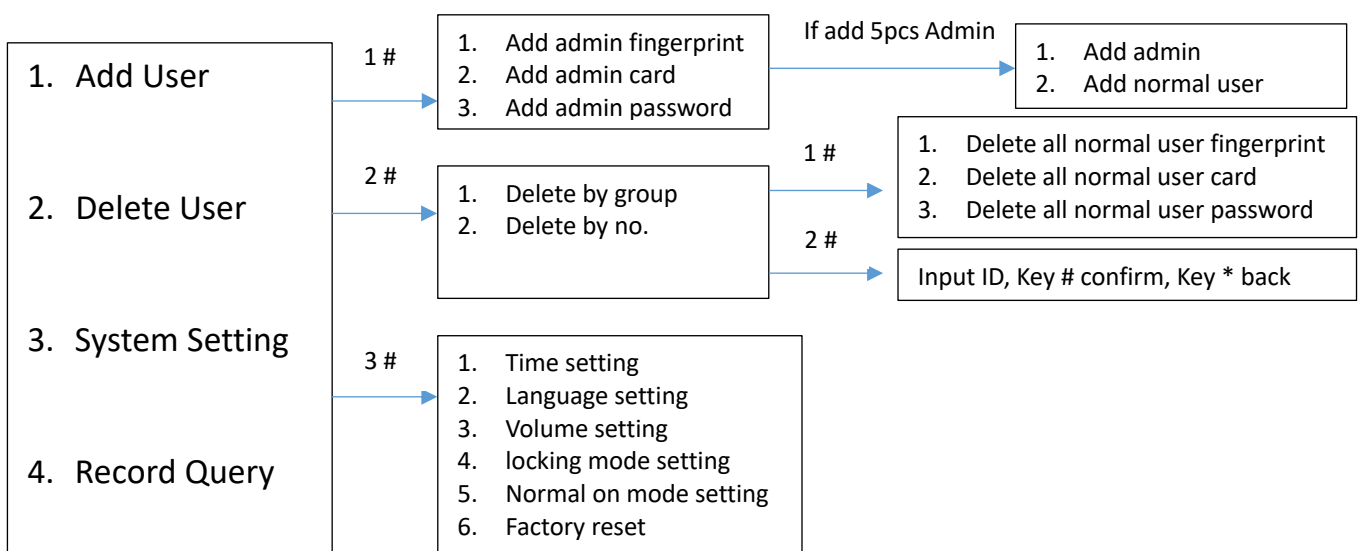
NOTE:

1. Pls keep your fingerprint clean while using this lock
2. The new lock is default as factory setting, any fingerprint, card and password 123456# can open the lock
3. If the battery is low, the lock will alarm, pls change the battery in time
4. There will be some dirty on the fingerprint sensor, it might effect the sensor function, pls keep fingerprint sensor clean
5. PLS DO NOT USE CORROSIVE CLEANER TO CLEAN THE LOCK
6. Mechanical keys can open the lock while fingerprint/card/password can not work, so pls put your mechanical keys outside of your house
7. There are two kind users: a) Administrator, 5pcs unlock information (fingerprint, code, card), not only can unlock the lock, but also can operate the lock system. b) normal users, 295pcs unlock information (fingerprint, code, card), only can unlock the lock, can not operate the lock system.
8. Key 2 means "Up", Key 8 means "Down", Key 4 means "Left", Key 6 means "Right"
9. If wrong information for 5 consecutive times, the system will lock for 3 minutes, and can not do any operation in these 3 minutes.
10. The initial administrator password is 123456, each password can set 6-10 nos. after you input the administrator information, the initial password will delete automatically.
11. Fake pin code: you can input any nos. before and after your password, total not more than 20nos.

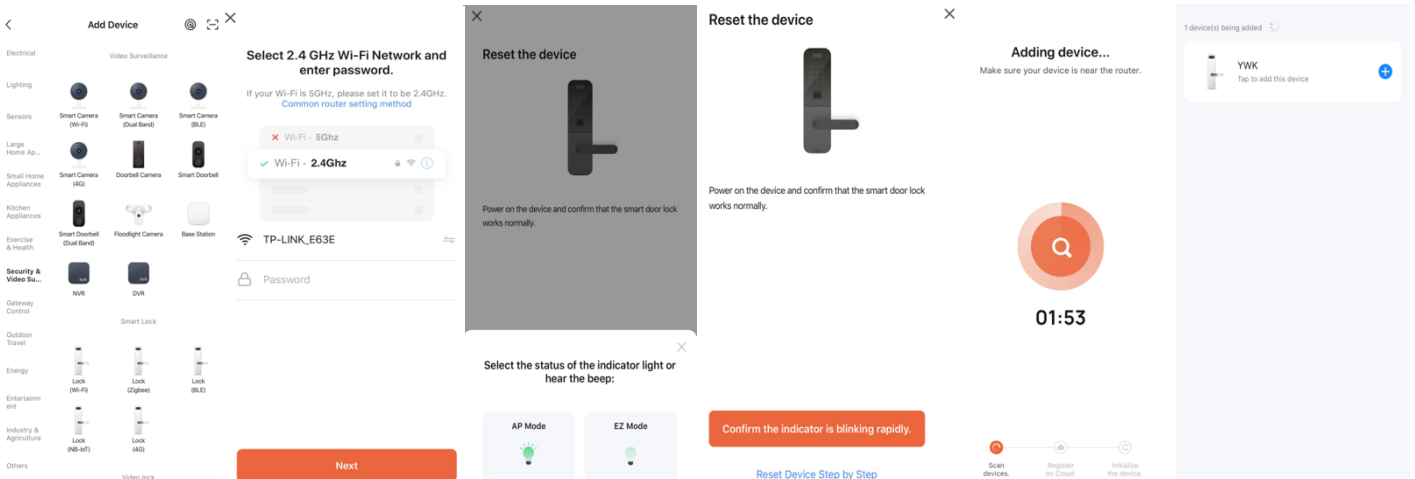
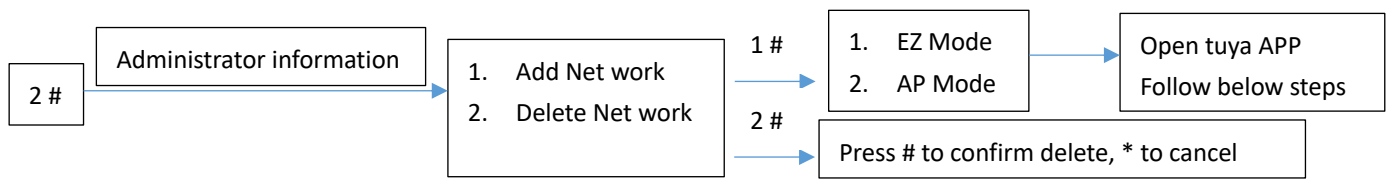
OPRATION GUIDE

1. Enter lock system

- a) Under initial situation: Press # * 123456#
- b) if set the administrator information: Press # * then administrator information (fingerprint, password or card)



HOW TO CONNECT TUYA WIFI



FCC Caution.

This device complies with part 15 of the FCC Rules. Operation is subject to the following two conditions: (1) This device may not cause harmful interference, and (2) this device must accept any interference received, including interference that may cause undesired operation.

Any Changes or modifications not expressly approved by the party responsible for compliance could void the user's authority to operate the equipment.

Note: This equipment has been tested and found to comply with the limits for a Class B digital device, pursuant to part 15 of the FCC Rules. These limits are designed to provide reasonable protection against harmful interference in a residential installation. This equipment generates uses and can radiate radio frequency energy and, if not installed and used in accordance with the instructions, may cause harmful interference to radio communications. However, there is no guarantee that interference will not occur in a particular installation. If this equipment does cause harmful interference to radio or television reception, which can be determined by turning the equipment off and on, the user is encouraged to try to correct the interference by one or more of the following measures:

- Reorient or relocate the receiving antenna.
- Increase the separation between the equipment and receiver.
- Connect the equipment into an outlet on a circuit different from that to which the receiver is connected.
- Consult the dealer or an experienced radio/TV technician for help.

*RF warning for Mobile device:

This equipment complies with FCC radiation exposure limits set forth for an uncontrolled environment. This equipment should be installed and operated with minimum distance 20cm between the radiator & your body.

.....