

Appendix A: TEST SETUP PHOTOS

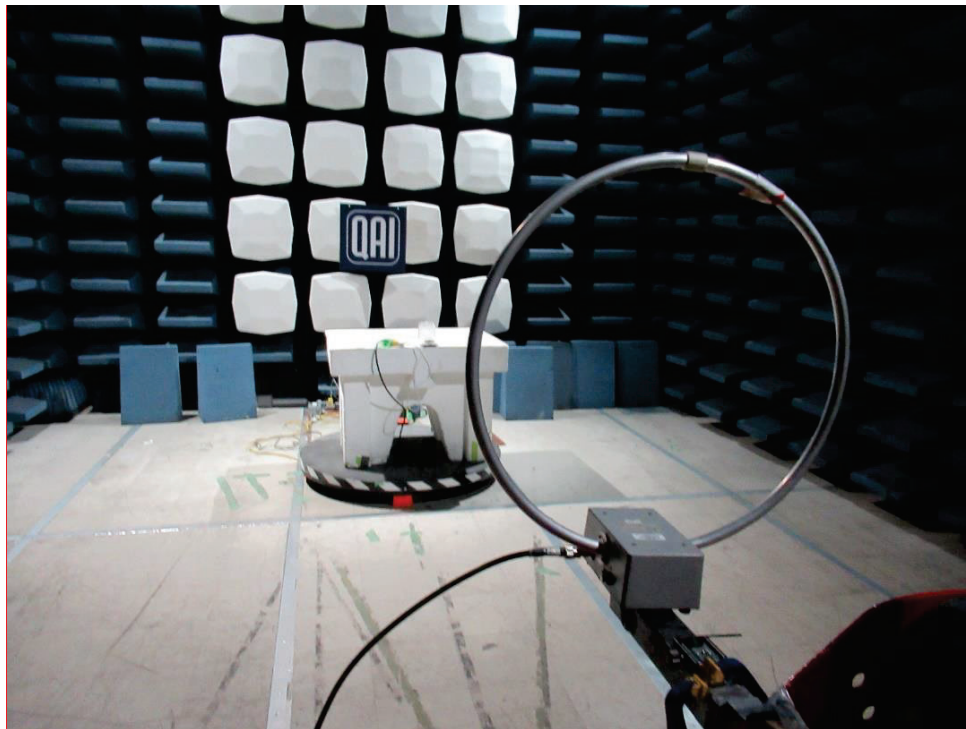


Figure 1: Radiated Emissions performed at the 3m SAC, 150kHz – 30MHz

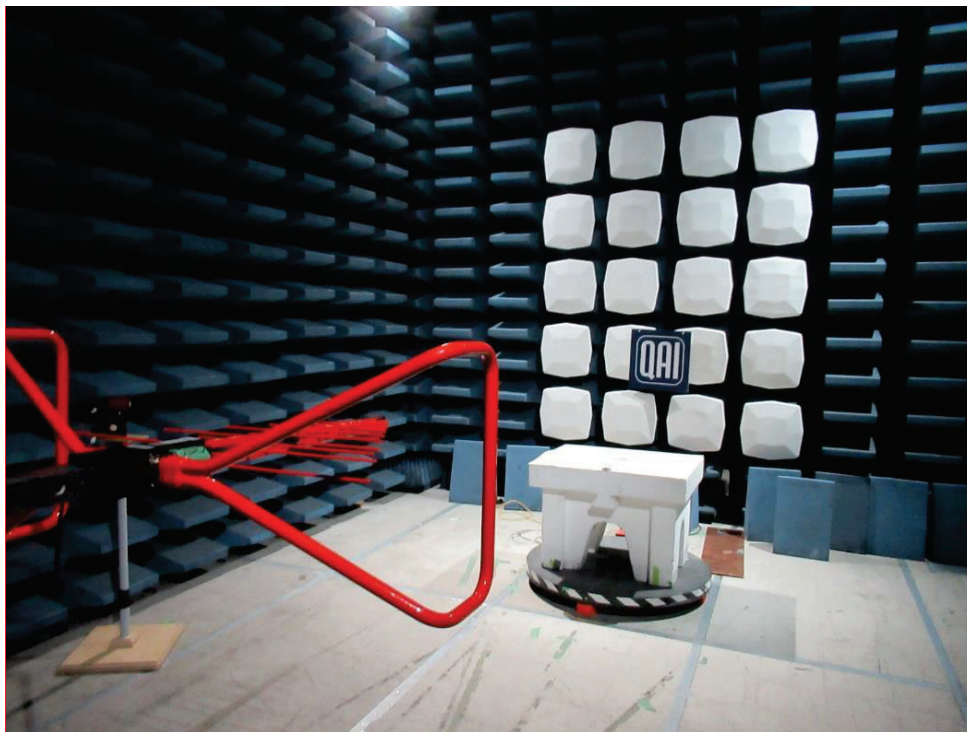


Figure 2: Radiated Emissions performed at the 3m SAC, 30MHz – 1GHz Battery Mode

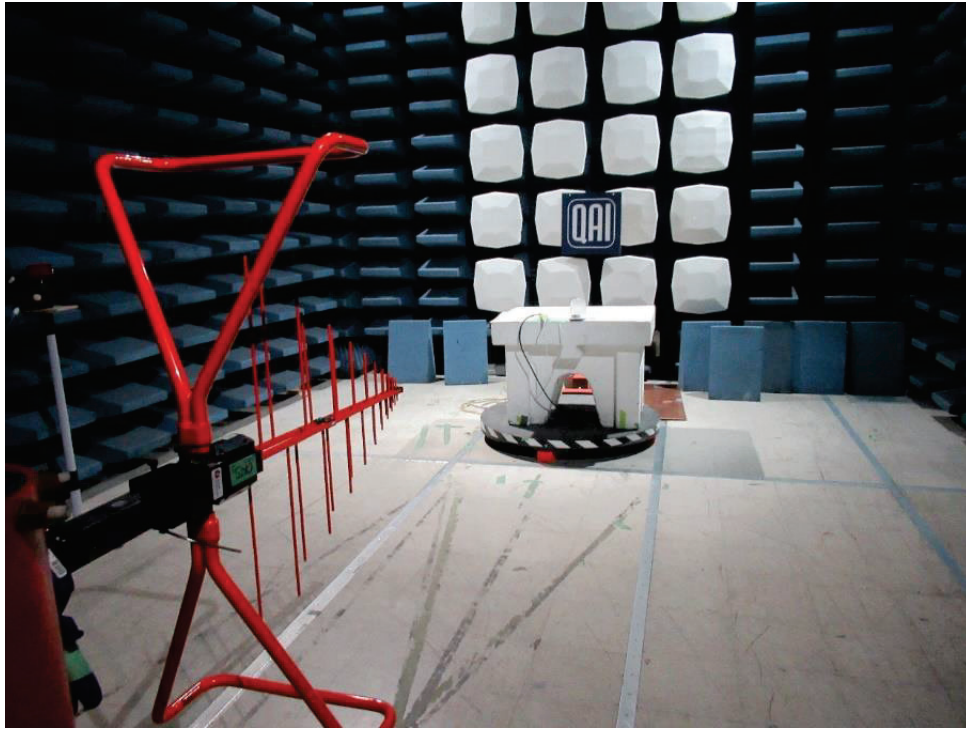


Figure 3: Radiated Emissions performed at the 3m SAC, 30MHz – 1GHz Charging Mode

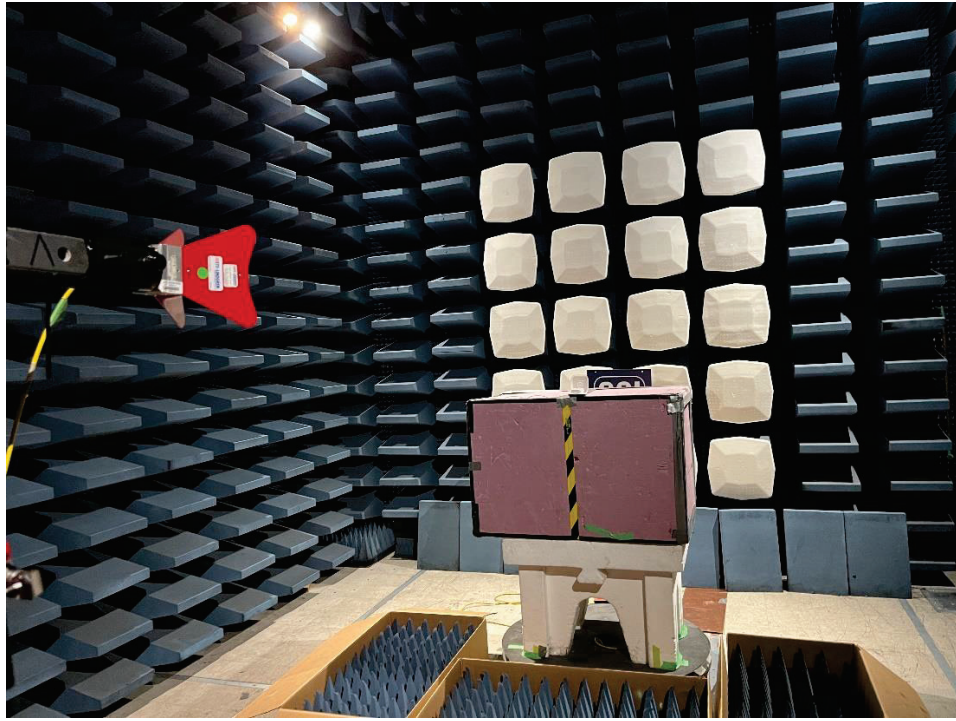


Figure 4: Radiated Emissions above 1GHz performed at the 3m SAC

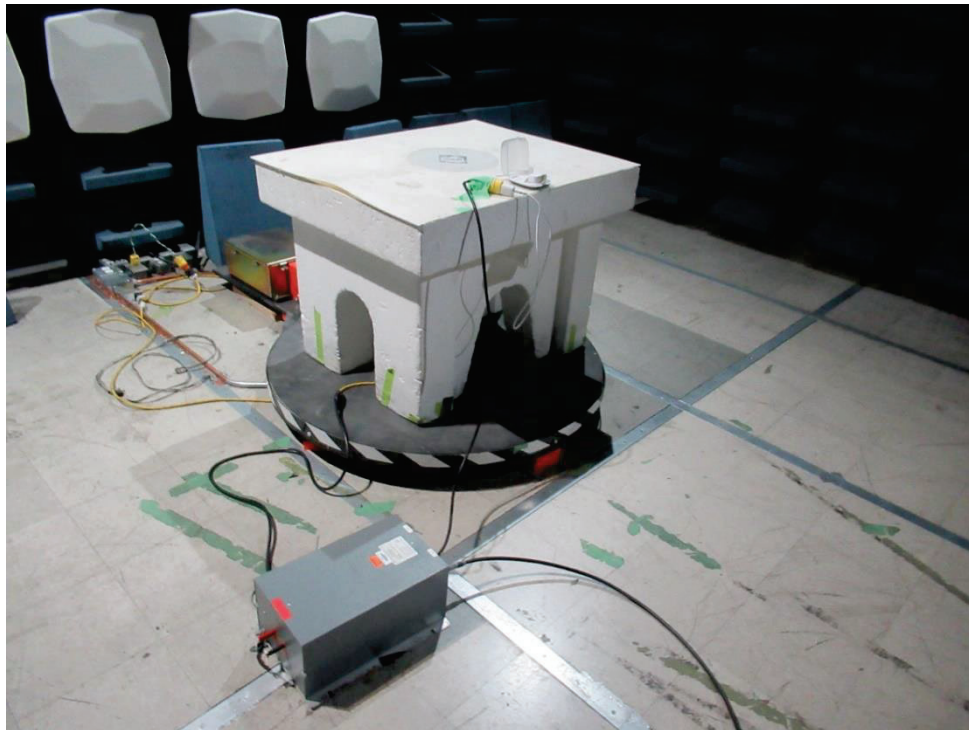


Figure 5: Conducted Emissions performed at the 3m SAC

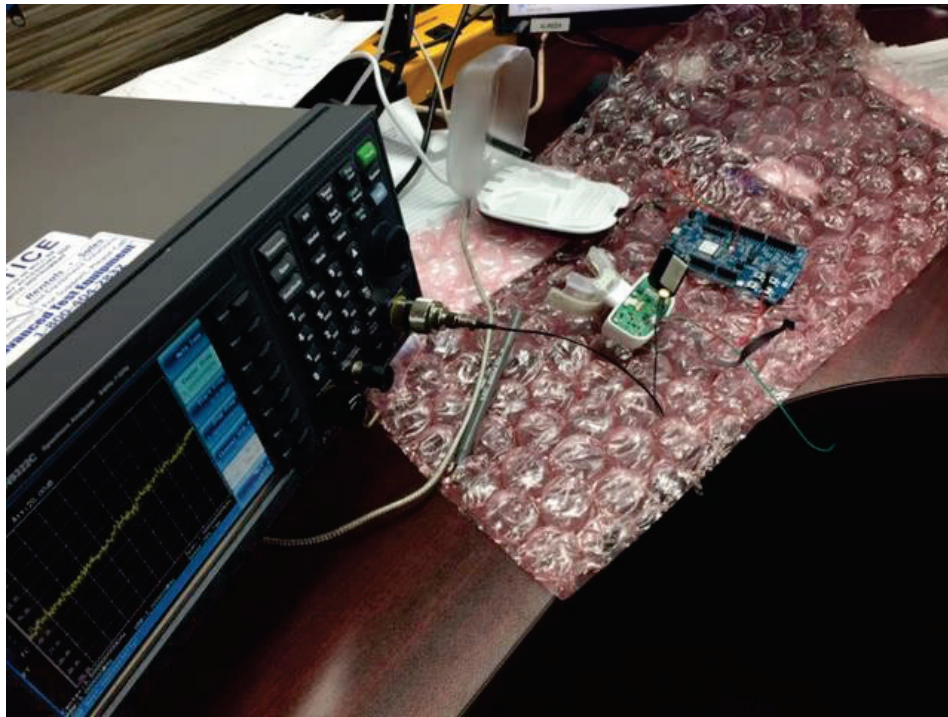


Figure 6: Radio Testing Station

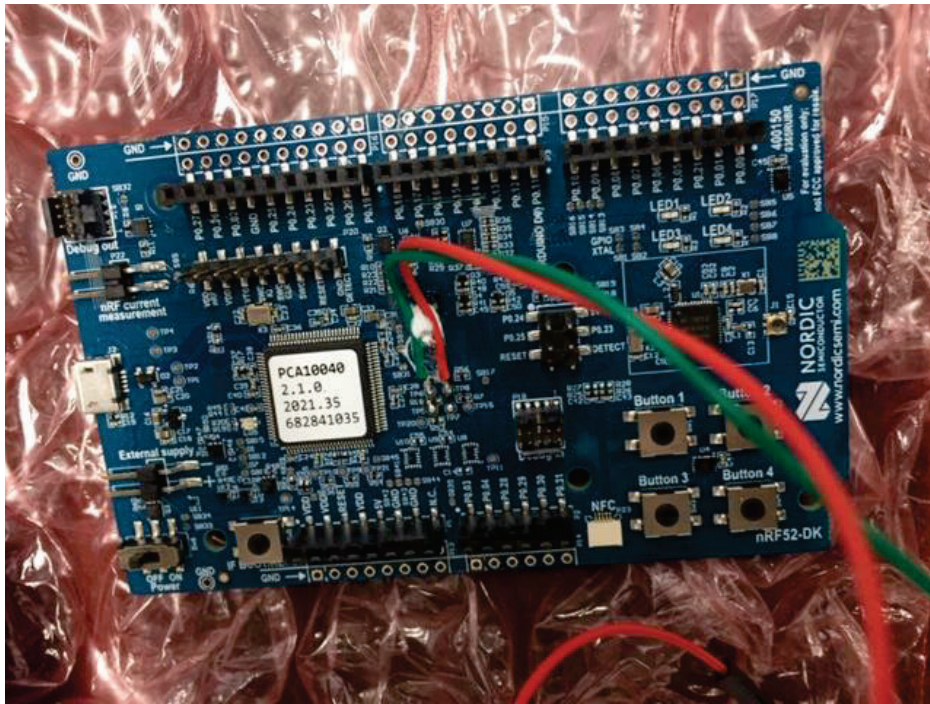


Figure 7: Companion board

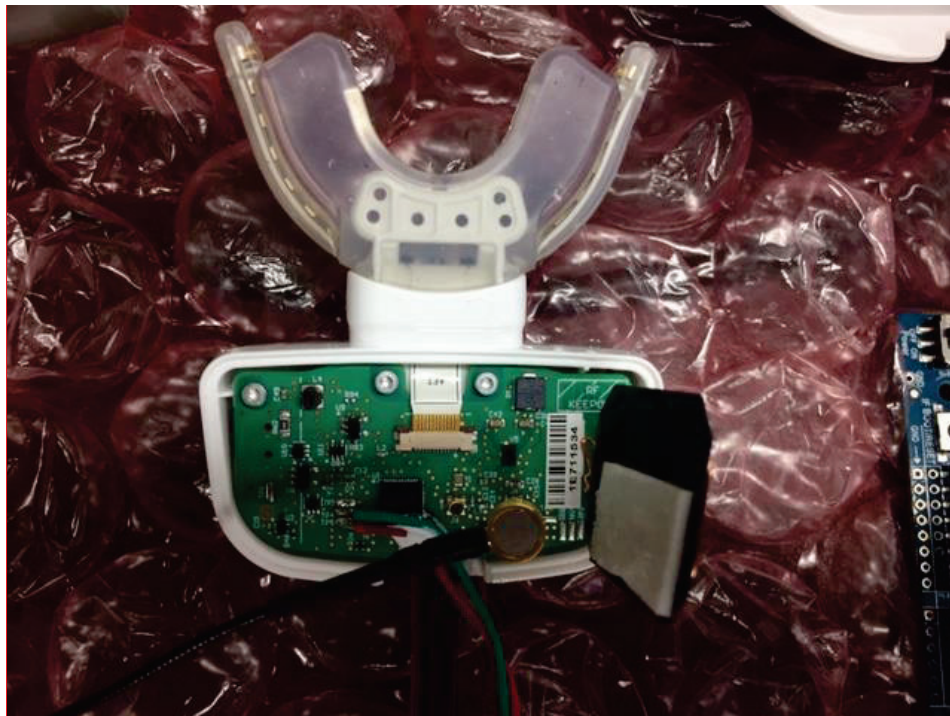


Figure 8: Open EUT

Appendix B: ABBREVIATIONS

Abbreviation	Definition
AC	Alternating Current
AM	Amplitude Modulation
CISPR	Comité International Spécial des Perturbations Radioélectriques
DC	Direct Current
EMC	ElectroMagnetic Compatibility
EMI	ElectroMagnetic Interference
EUT	Equipment Under Test
FCC	Federal Communications Commission
IC	Industry Canada
ICES	Interference Causing Equipment Standard
IEC	International Electrotechnical Commission
LISN	Line Impedance Stabilizing Network
OATS	Open Area Test Site
RF	Radio Frequency
RMS	Root-Mean-Square
SAC	Semi-Anechoic Chamber

END OF REPORT