



SPECIFICATION

Shenzhen Guandetong Electronic Limited



Shenzhen Guandetong

Electronics Co.

~~Shenzhen Guandetong~~

Patch Antenna (2.4G)

Product Specification

customer		frequency	2400-2500MHz
customer s		frequency band	
Wire Name		edition edition	A1
Customer number		GuanDeTong e Material Number	
Guan Datong No.			
R F Design	Xiao Bin (1938-), right-wing journalist.	RF Manager	Liu Liang

	colleague of the Chinese Communist Party 1987-1990		
structural design	Wang Dong (1941-), famous Chinese politician, prime minister 1990-2001	Structural Manager	Wang Hua (1958-1982), Jin dynasty writer, poet and politician
technical director	andy	date period	2022-05-05

Customer
Confirmation:

Does the assembly meet your requirements: OK NG

Shenzhen Guandetong Electronics Co.
Confidentiality requirements

The Company has proprietary technology to provide information, these proprietary information should be kept strictly confidential, without the prior written consent of Shenzhen GuanDeTong Electronics Co.
Disclosure to any person or company.

catalogs

best Face	1
ow	
a	
title	
ord Record	2
er	
(tax	
ono	
my)	
I. Product Images	3
II Product Parameters	3
III. S11 data	4
IV Product structure chart	5
V. Environmental Reliability Experiment Report	6

Shenzhen Guandetong Electronics Co.
Confidentiality requirements

The Company has proprietary technology to provide information, these proprietary information should be kept strictly confidential, without the prior written consent of Shenzhen GuanDeTong Electronics Co.
Disclosure to any person or company.

I. Product Pictures



II. Product Parameters

Product Test Parameters			
Product Name	Steel Patch Antennas	Model Type	gdt-x50-2.4g-38
Electrical Specifications			
Frequency Range	2400-2500MHz	Polarization	perpendicular
Input Impedance (Impedance)	50 Ω	radiation direction	in all directions
VSWR	≤ 2	Power capacity (Power)	50W
Gain	2.5dBi	Bandwidth	100MHz
Mechanical Specifications			
Dimensions	9.30*3.30*4.95 \pm 0.2mm	Antenna Color (Chassis Color)	
Connector Type (Connector)	Soldering (SMT SMD)	Cable Length	windshield
Antenna Material (Chassis Material)	steel sheet		
operating temperature (Working Temperature)	-40°C-+85°C	storage temperature (Limit Temperature)	-40°C-+85°C

Address: 3rd Floor, Building D, Maoyuan Industrial Park,
Guanhu Street, Longhua District, Shenzhen, China

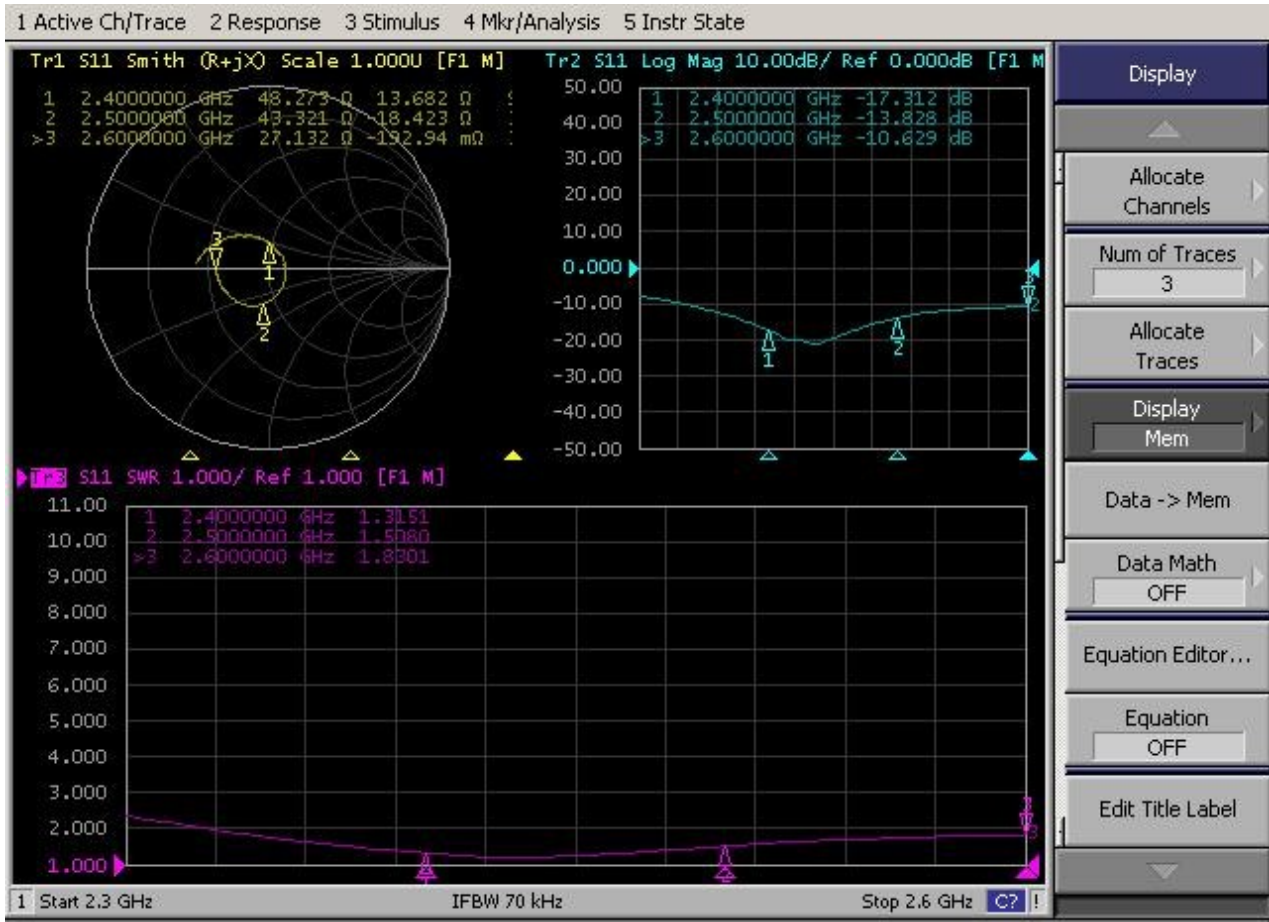
Fax: 0755-89733896

<http://www.szgdt.com>

Shenzhen Guandetong Electronics Co.
Confidentiality requirements

The Company has proprietary technology to provide information, these proprietary information should be kept strictly confidential, without the prior written consent of Shenzhen GuanDeTong Electronics Co. Disclosure to any person or company.

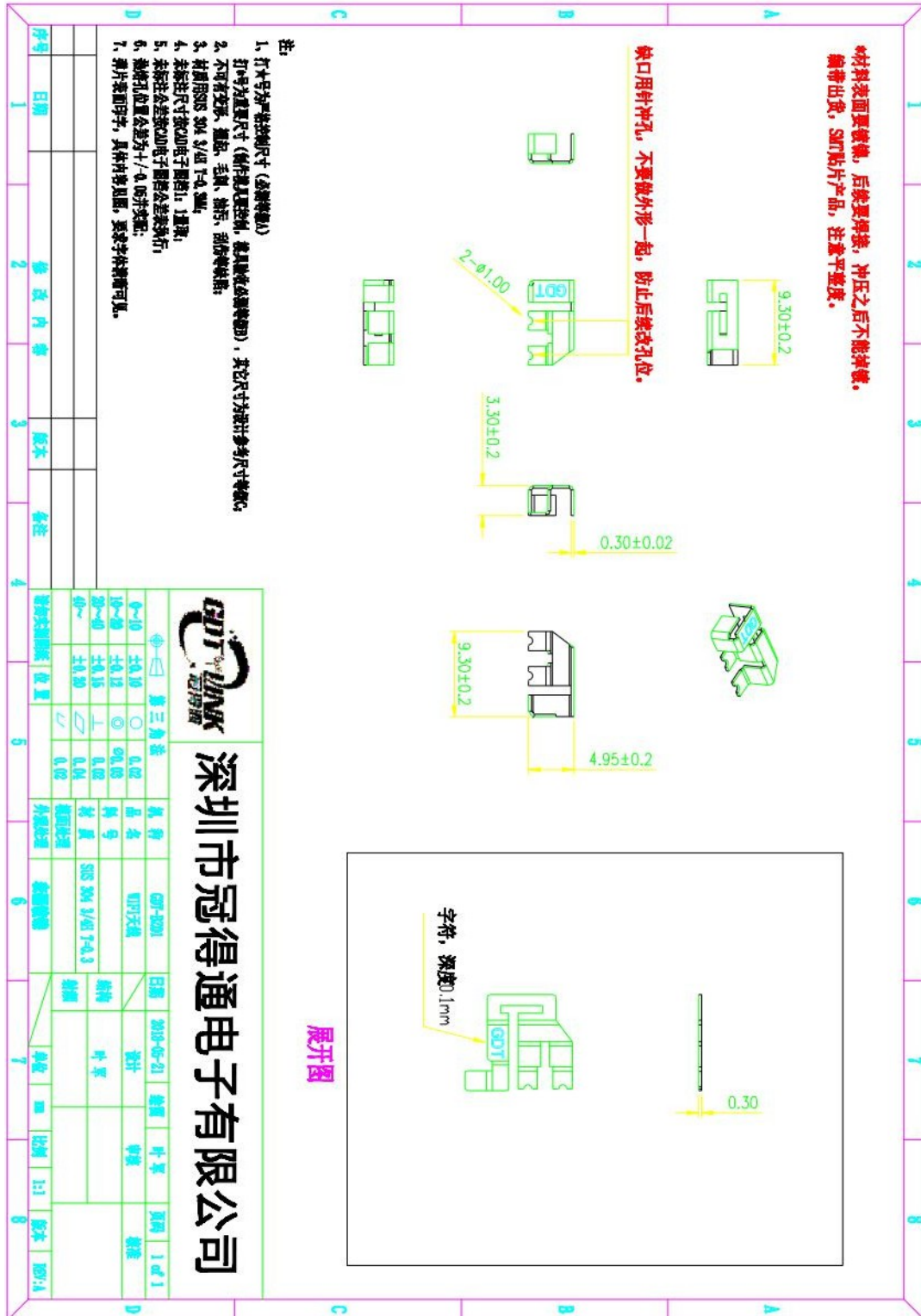
III. S11 (VSWR, Return loss, Smith) data



Shenzhen Guandetong Electronics Co.
Confidentiality requirements

The Company has proprietary technology to provide information, these proprietary information should be kept strictly confidential, without the prior written consent of Shenzhen GuanDeTong Electronics Co. Disclosure to any person or company.

IV. Structural drawings



Shenzhen Guandetong Electronics Co.
Confidentiality requirements

The Company has proprietary technology to provide information, these proprietary information should be kept strictly confidential, without the prior written consent of Shenzhen GuanDeTong Electronics Co.
 Disclosure to any person or company.

V. Environmental performance testing

sports event	test condition	norm
Storage environment	Test the temperature, humidity, and barometric pressure without specifying as follows: 1. Temperature -30°C~+80 2. Relative humidity 45%-85% 3. Air pressure 86kpa-106kpa	Normal electrical and mechanical performance
High and low temperature test	5 cycles between 70°C and 40°C, then 1-2H under normal conditions to check the quality of appearance.	The dimensions shall meet the provisions and shall meet the requirements of the Mechanical and electrical properties
Constant Damp Heat Test	Relative humidity $95\pm 3\%$, test temperature: 40°C. After continuous 2H action, the electrical performance is measured within 5min after the specimen is taken out, and the specimen is in the normal condition. Pieces under 1-2H, check the appearance quality	The dimensions shall meet the provisions and shall meet the requirements of the Mechanical and electrical properties
Vibration test	Vibration frequency range 10-55Hz, displacement amplitude: 0.35MM, acceleration amplitude: 50.0M/S, Sweep cycle times: 30 times	Normal electrical and mechanical properties
Drop test	Free fall 3 times at a height of 1M in the direction of mutually perpendicular axes.	Normal electrical and mechanical properties