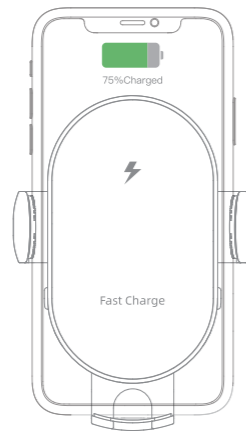


面

Wireless Car Charger



User manual
Model: NC9

User's manual:

The charger is compatible with the following devices,
Supporting Qi wireless charging:
15W Fast Charge: LG V30/ V30S/ V35/ V40 ThinQ/ LG G8 ThinQ/ G8S/ G7 ThinQ/ G7 One
10W Fast Charge: Samsung Galaxy S20/S20+/S10E/S9/S9+/S8/S8+/S7/S7 edge/S6/S6 edge/
S6 edge+; Note 20/20+/10/Note 10+/9/8 and more.
7.5W Fast Charge: iPhone 12 Pro Max/12 Pro/12/12 Mini/11 Pro Max/11 Pro/11/Xs Max/Xs/XR/X
8 Plus/8/SE 2020
5W Standard Charge: Other Qi-enabled smartphones

This wireless charger supports the quick charge function.
Must use the QC 2.0/3.0/PD adapter (Not included
in product kit)

We recommend use charger with the cable included in product kit.

- Product kit:**
1. Wireless car charger - 1 pc
 2. The mounting bracket on the front panel- 1 pc
 3. Spring clip on the air vent - 1 pc
 4. USB-C cable - 1 pc
 5. User manual/Warranty card - 1 pc



Thank you
for purchasing a Nalwort product.
Our goal is to make sure that you are completely satisfied with your
purchase.

Please contact us at any time 24/7/365
If you have any questions, concerns or need to submit warranty
request.

Nalwort_@outlook.com

1. Wireless charging area
2. Side clips
3. Button for opening/ closing side clips
4. Led indicator
5. Input Type-C
6. Spring clip on the air vent
7. The mounting bracket on the front panel
8. USB-C cable
9. Adjustable bottom feet

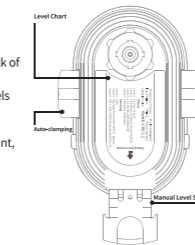


Use steps:

1. Be sure to adjust the bottom tray based on your phone size.

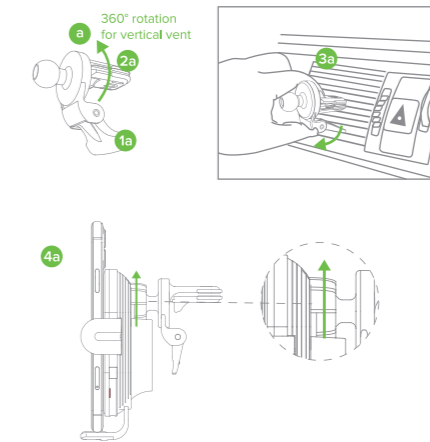
User Guide for the First Time

- Step 1: Confirm your phone model.
Step 2: Find the proper level in the level chart(Back of
charger).
Step 3: Pull down the bottom tray, there are 4 levels
for your option.
Step 4: Connect the USB-C cable to car charger
adapter and place your phone on the mount,
the clamp will be closed automatically.



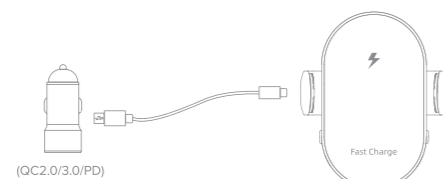
	Level 1	Level 2	Level 3	Level 4
iPhone	13 mini 12 mini	13/13 Pro/ 12/12 Pro/ 11 Pro/X/ XS/8/SE	11/11 Pro Max /XR/XS Max /8 Plus	13 Pro Max 12 Pro Max
Samsung		S10e	S21+/S21 Ultra 10+/9/9+/8 /8+/7 Note 10	S21+/S21 Ultra S20+/20FE/ 20 Ultra, Note 20/20+ /10+/9/8
Others		Pixel 5/4/3; LG G6/G6+	Pixel 3 XL; LG G8 ThinQ/G7 ThinQ/V35 ThinQ/V30+ /V30 Xiaomi Mix 2S/ MI 9/ MI 9 Pro Huawei Mate RS/ 20 Pro/ 30 Pro/ 30 RS/40	Pixel 4 XL; LG G8/G8X/ G8X ThinQ/V50 ThinQ/V50S ThinQ/V40 ThinQ Xiaomi M10/ M10 Pro Huawei Mate 40 Pro/ 40 RS/ 40 Pro+; P30 Pro/ 40 Pro /40 Pro+

2. Connect the wireless car charger to any of the mounts (a, b).
A) Spring clip on the air vent:
- Adjust the support component (1a) to proper position.
- Press the clamp button (2a).
- Insert the clip into the ventilation vent of the car (3a).
- Release the clamp button.
- Adjust the position of the wireless charger and make sure the support component
press against the air vent as a support point. That will prevent your phone from
sliding down when driving.
- Lock the fastening position, tighten the plastic nut of the articulated device (4a).
B) Mounting bracket on the windshield or front panel:
- Select place on the front panel of the car or windshield (the surface of the front
panel must be flat and clean).
- Remove the film on the suction cup then firmly press the vacuum silicone suction
cup to the selected surface(1b).
- Press the lever (2b), the mounting is securely locked.
- Adjust the angle and length of the arm to find a proper position (3b).
- Lock the fastening position, tighten the plastic nut of the articulated device(4b).

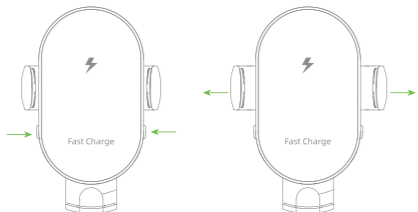


113 mm

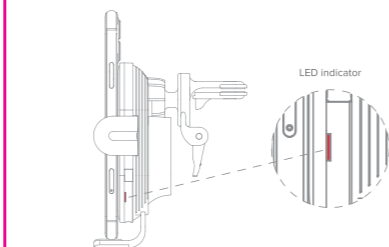
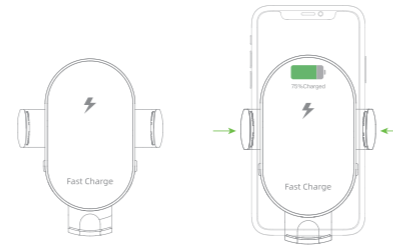
3. Connect the wireless charger to the car power adapter (Not included in the
package) using the USB A- USB C cable (included in the package).



4. Press the button «for open/ close the side clips» on one side, the phone
holder will open automatically.



5. Place your mobile device supporting the Qi standard right in the center of the
wireless charger. Coil inductive recognition will work and the phone holder will
automatically close tightly holding your phone. The LED indicator will turn green.
Wireless charging of your phone has begun.



6. LED indicator light shows the working status:
Green light on to show normal work.
Red and Green flashes alternately:
a) The wireless charger platform has foreign objects like metal, magnet,
kickstand, popsocket or credit card etc. please check it and remove;
b) Your device has a wrong charging model or does not support Qi standard.

Technical Specifications:

Name: Wireless car charger
Standard: Qi
Input: 5V/2A; 9V/2A
Wireless charger output: 5V/1.5A; 9V/1.67A
Power: 5W/7.5W/10W/15W (max)
Transmission distance: 5 mm;
Interface: Type-C
Material: PC+ABS+Silicone+Tempered Glass
Color: Black
Size: 137x165x70 mm
Weight: 324g
Certificate: ROHS FCC CE



Thank you
for purchasing a Nalwort product.
Our goal is to make sure that you are completely
satisfied with your purchase.

Please contact us at any time 24/7/365
If you have any questions,
concerns or need to submit
warranty request.

Nalwort_@outlook.com

CE FCC RoHS
Made in China

FCC Requirement

Any changes or modifications not expressly approved
by the party responsible for compliance could void the
user's authority to operate the equipment.
This device complies with Part 15 of the FCC Rules.
Operation is subject to the following two conditions:
(1) this device may not cause harmful interference, and
(2) this device must accept any interference received,
including interference that may cause undesired
operation.

Note: This equipment has been tested and found to
comply with the limits for a Class B digital device,
pursuant to Part 15 of the FCC Rules. These limits are
designed to provide reasonable protection against
harmful interference in a residential installation. This
equipment generates, uses, and can radiate radio
frequency energy, and if not installed and used in
accordance with the instructions, may cause harmful
interference to radio communications. However, there is
no guarantee that interference will not occur in a
particular installation. If this equipment does cause
harmful interference to radio or television reception,
which can be determined by turning the equipment off
and on, the user is encouraged to try to correct the
interference by one or more of the following measures:
- Reorient or relocate the receiving antenna.
- Increase the separation between the equipment and
receiver.
- Connect the equipment into an outlet on a circuit
different from that to which the receiver is connected.
- Consult the dealer or an experienced radio/TV
technician for help.

FCC ID:2A69P-NC9

70 mm