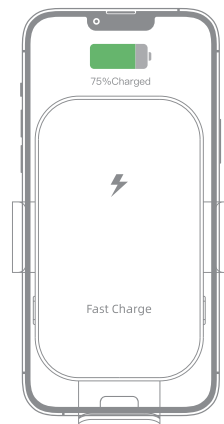


# 面

## Wireless Car Charger



User manual  
Model: NC6

### User's manual:

The charger is compatible with the following devices.  
Supporting Qi wireless charging:  
15W Fast Charge: LG V30/ V30S/ V35/ V40 ThinQ/ LG G8 ThinQ/ G8S/ G7 ThinQ/ G7 One  
10W Fast Charge: Samsung Galaxy S21/ S21+/ S21 Ultra/ S20/ S20+/ S10/ S10+/ S9.  
Note: 10/10+/9/8 and more.  
7.5W Fast Charge: iPhone 13 Pro Max/ 13 Pro/ 13 Mini/ 12 Pro Max/ 12 Pro/ 12 Mini/  
11 Pro Max/ 11 Pro/ 11X/ Max/ XS/ XR/ 8/ Plus/ 8/ SE 2020  
5W Standard Charge: Other Qi-enabled smartphones.  
This wireless charger supports the quick charge function.  
Must use the QC 2.0/3.0 adapter (Not included in product kit)

We recommend use charger with the cable included in product kit.

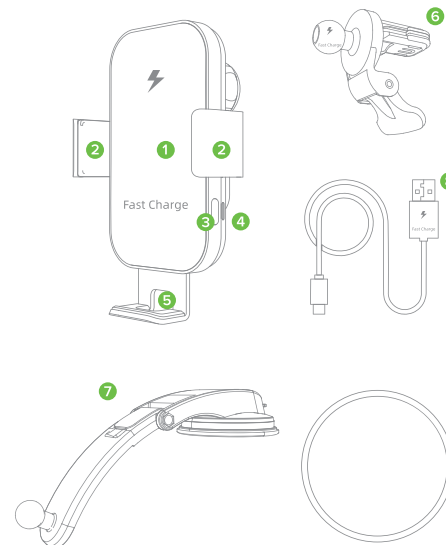
Product kit:  
1. Wireless car charger-1pc  
2. The mounting bracket on the front panel-1pc  
3. Spring clip on the air vent-1pc  
4. USB-C cable-1pc  
5. User manual/Warranty card-1pc  
6. Sticky Dashboard Pad-1pc



Thank you for purchasing our product. Our goal is to make sure that you are completely satisfied with your purchase.  
Please contact us at any time 24/7/365. If you have any questions, concerns or need to submit warranty request.

Nalwort\_@outlook.com

1. Wireless charging area
2. Side clips
3. Button for opening/ closing side clips
4. Led indicator
5. Input Type-C
6. Spring clip on the air vent
7. The mounting bracket on the front panel
8. USB-C cable
9. Sticky Dashboard Pad

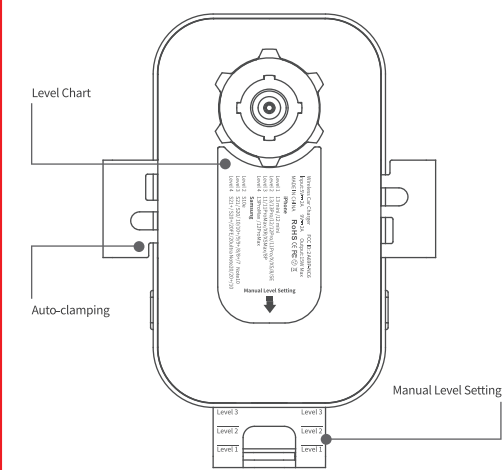


### Use steps:

1. Be sure to adjust the bottom tray based on your phone size.

#### User Guide for the First Time

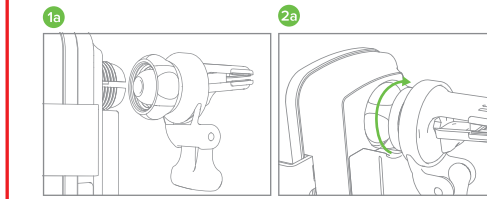
Step 1: Confirm your phone model.  
Step 2: Find the proper level in the level chart (Back of charger).  
Step 3: Pull down the bottom tray, there are 4 levels for your option.  
Step 4: Connect the USB-C cable to car charger adapter and place your phone on the mount, the clamp will be closed automatically.



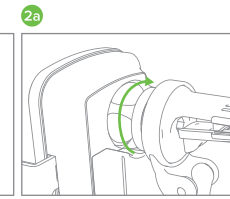
	Level 1	Level 2	Level 3	Level 4
iPhone	13 mini 12 mini	13/13 Pro/ 12/12 Pro/ 11 Pro/X/ XS/8/SE	11/11 Pro Max /XR/XS Max /8 Plus	13 Pro Max 12 Pro Max
Samsung		Side	S21/20/10/ 10+/9+/8 /8+/7 Note 10	S21+/S21 Ultra S20+/20FE/ 20 Ultra. Note: 20/20+ /10+/9/8
Others		Pixel 5/4/3/ LG G6/G6+	Pixel 3 XL/ LG G8 ThinQ/G7 ThinQ/V35 ThinQ/V30+ /V30 Xiaomi Mix 2S/ MI 9/ MI 9 Pro Huawei Mate RS/ 20 Pro/ 20 RS/ 30 Pro/ 30 RS/40	Pixel 4 XL/ LG G8/G8X/ G8X ThinQ/V50 ThinQ/V50S ThinQ/V40 ThinQ Xiaomi MI10/ MI10 Pro Huawei Mate 40 Pro/ 40 RS/ 40 Pro/ P30 Pro/ 40 Pro

2. Connect the wireless car charger to any of the mounts (a, b).

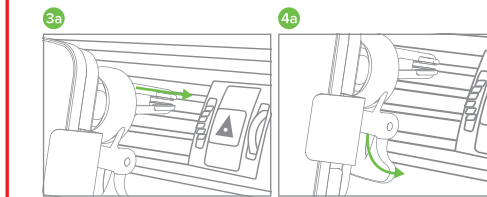
1. Mounting spring clip on the air vent:



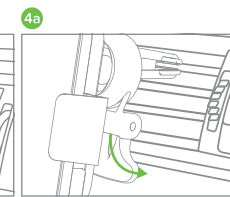
Step 1: Insert ball head and nut into socket. (1a)



Step 2: Tighten nut to lock angle in place. (2a)

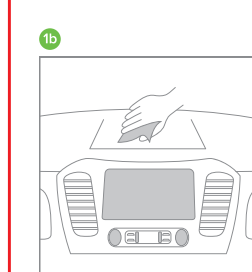


Step 3: Slide clamp fully into air vent. (3a)

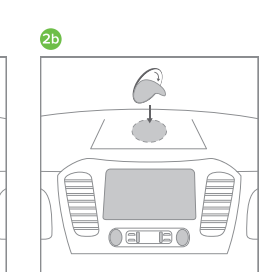


Step 4: Rest support arm against vent. (4a)

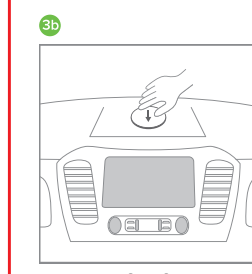
3. Mounting sticky dashboard pad and bracket:  
(Note: Before mounting the sticky dashboard pad, make sure that the position of the sticky dashboard pad allows the bracket to rest against the edge of the front panel, it will be more stable)



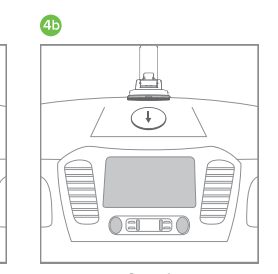
Step 1: Clean the front panel surface. Make sure there is no dust or debris. (1b)



Step 2: Remove the red film from the sticky pad. Make sure the front panel surface is flat and clean. (2b)

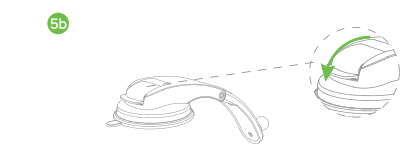


Step 3: Press and rub the sticky pad from the top. Make sure all adhesive area sticks to dash surface firmly. (Wait for 12-24 hours to ensure a strong adhesive) (3b)

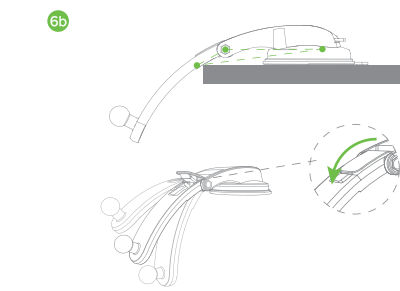


Step 4: Place and press the suction cup pedestal on the center of the sticky pad. Make sure no air remains. (4b)

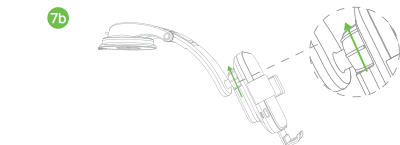
- Step 5: Press the lev(5b), the mounting is securely locked



- Step 6: Adjust the long arm lean against the edge of dashboard and press down the security lock on the arm (6b)

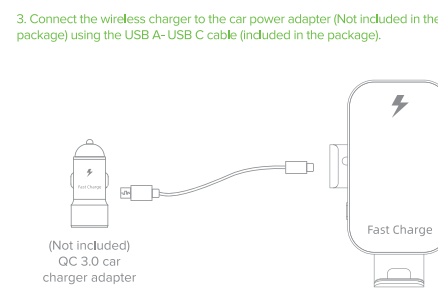


- Step 7: Lock the fastening position, tighten the plastic nut of the articulated device (7b)



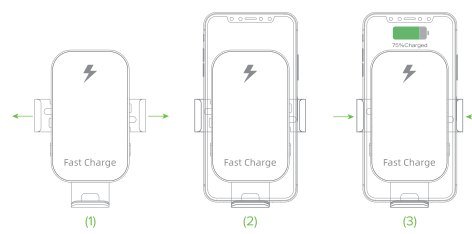
### Note:

- (1) Please note that each sticky dashboard pad is one-time use only. Once removed, it may not be reappplied.
- (2) If the suction cup gets dirty, please clean the your suction cup with running water and let it air dry before attach to the sticky dashboard pad surface

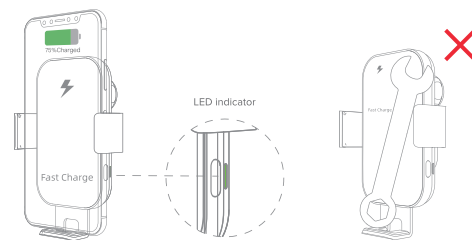


(Not included)  
QC 3.0 car charger adapter

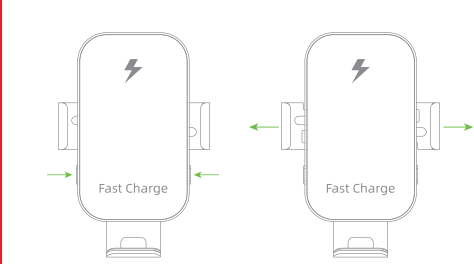
- (1) Once Connected the power, the phone holders' side clips will automatically open.
- (2) Place your phone supporting that qi standard right in the center of the wireless charger.
- (3) Coil inductive recognition will work and the phone holders' side clips will automatically close tightly holding your phone. The LED indicator will turn green. Wireless charging of your phone has begun.



5. LED indicated light shows the working status:  
Green lights on to show normal work.  
Red and Green flashes alternately.  
a) The wireless charger platform has foreign metal objects - please check it and remove;  
Or  
b) Your device has a wrong charging model or does not support Qi standard.



6. Press the button for open/close the side clips, the phone holders' side clips will open automatically, then you can take your phone out. In addition, you can still open the phone holder within 30 min even if your car is shut off.



### Technical Specifications:

Name: Wireless car charger  
Standard: Qi  
Input: 5V/2A; 9V/2A  
Wireless charger output: 5V/1.5A; 9V/1.67A  
Power: 5W/7.5W/10W/15W (max)  
Transmission distance: ≤5 mm;  
Interface: Input Type-C  
Material: PC+ABS+Silicone+Aluminium Alloy  
Color: Black  
Size: 140x160x67 mm  
Weight: 382g  
Certificate: ROHS, FCC, CE

Made in China



Thank you for purchasing our product. Our goal is to make sure that you are completely satisfied with your purchase.

Please contact us at any time 24/7/365. If you have any questions, concerns or need to submit warranty request.

Nalwort\_@outlook.com

### FCC Requirement

Any changes or modifications not expressly approved by the party responsible for compliance could void the user's authority to operate the equipment. This device complies with Part 15 of the FCC Rules. Operation is subject to the following two conditions: (1) this device may not cause harmful interference, and (2) this device must accept any interference received, including interference that may cause undesired operation.

Note: This equipment has been tested and found to comply with the limits for a Class B digital device, pursuant to Part 15 of the FCC Rules. These limits are designed to provide reasonable protection against harmful interference in a residential installation. This equipment generates, uses, and can radiate radio frequency energy, and if not installed and used in accordance with the instructions, may cause harmful interference to radio communications. However, there is no guarantee that interference will not occur in a particular installation. If this equipment does cause harmful interference to radio or television reception, which can be determined by turning the equipment off and on, the user is encouraged to try to correct the interference by one or more of the following measures:  
- Reorient or relocate the receiving antenna.  
- Increase the separation between the equipment and receiver.  
- Connect the equipment into an outlet on a circuit different from that to which the receiver is connected.  
- Consult the dealer or an experienced radio/TV technician for help.

FCC ID: 2A69P-NC6

113 mm

70 mm