

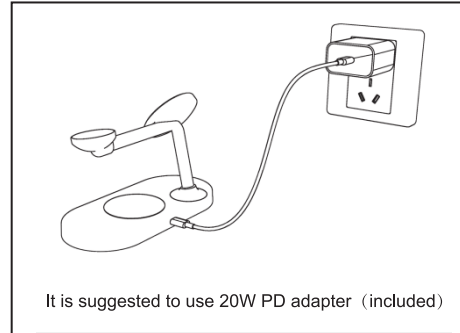
面

3 in 1 Magnetic Wireless Charger

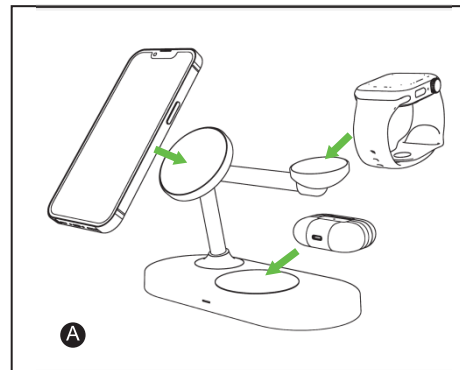
User Manual



-1-

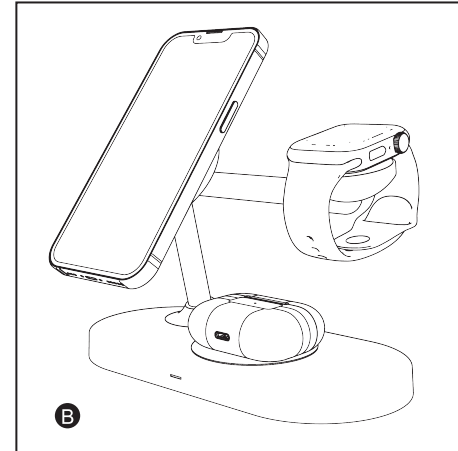


It is suggested to use 20W PD adapter (included)

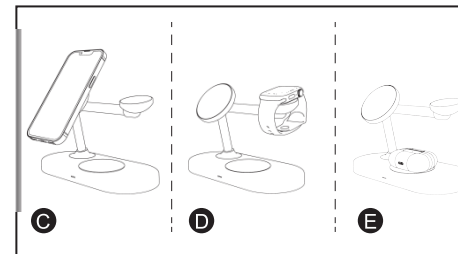


A

-2-



B



C

D

E

-3-

IMPORTANT SAFETY INSTRUCTIONS

Before Using the unit, please read the user manual carefully.

- Do not store device in high-temperature environment, including heat caused by intense sunlight or other forms of heat. Do not place device in fire or other excessively hot environments. Exposure to fire or temperature above 212F(100 C) may cause explosion.
 - Do not use the wireless charger in excess of its output rating. Overloading outputs above rating may result in a risk of fire or injury to persons.
 - Do not expose the wireless charger to rain or snow.
 - Do not modify, repair or disassemble the unity, if so, please contact the manufacturer.
- Switch off the wireless charger when not in use.
The wireless charger will automatically switch off when disconnected from its wall charger.

Applicable Devices

- iPhone 13 Pro Max/13 Pro/13/13 mini/iPhone 12 Pro Max/12 Pro/12/12 mini
- Apple AirPods Pro, AirPods 2 (Need to match wireless charging case)
- Apple Watch 6/5/4/3/2/1/SE

Please Note:

- The watch wireless charging area supports Apple watch only
- Only use certified QC 3.0 or PD Fast Charging Wall Adapter to power the device, do not plug into computer USB port or any other non certified USB port.
- Place your qi-enabled device accurately in the wireless charging area when charging.
- A QC3.0 or PD fast charging adapter is required when charging 3 devices simultaneously or want to have a fast charging effect.
- Make sure to disconnect the device from power when cleaning.

-4-

110 mm

6. It is normal and safe to hear a humming noise when very close to the charger. It means that this wireless charger is adjusting its temperature to achieve a more efficient charging speed.

Q&A: If the LED light flashes, how can I deal with this problem?

The blue indicator will light up when your AirPods starts charging, and the indicator will go out after 10 seconds. If the indicator light flashes, it means the AirPods is charging abnormally.

- Please make sure your earbuds is AirPods 2 or AirPods Pro (Need to match wireless charging case) .
- Make sure that there are no foreign objects between the AirPods case and the charging area.
- Please move the AirPods slowly so that it is in the charging center.

Q&A: If the wireless charging dock doesn't work, how can I deal with this problem?

- Make sure your device is iPhone 12/13 series, please remove the phone case except magsafe case.
- Check if you use the PD adapter included in the package to power our wireless charger.
- Test with other USB cables.
- Check whether your devices' case comes with metal objects. Magnetic and metal attachments will prevent charging.
- Restart your devices

Q&A: Why the device can not be fully charged?

- This may due to high environmental temperature, please recharge after the temperature is lowered. Our charger has temperature control to safe guard your device when charging.
- Check whether the charging cable is well connected.
- Change the charging cable of the charger.
- Check if you use the 20W PD adapter(included).

-5-

3 in 1 Magnetic Wireless Charger

Input interface:Type-C

Material: plastic + aluminum

Input: 9V-2.2A 12V-1.5A

Transmission distance:≤5mm

7.5W only for iPhone 13/12 Series

2.5W for Apple Watch SE/6/5/4/3/2/1

5W for AirPods Pro/2 with Wireless Charging Case



Thank you

For purchasing our product.
Our goal is to make sure that you are completely satisfied with your purchase.
Please contact us at any time 24/7/365
If you have any questions, concerns or need to submit warranty request.



E-mail

SAISKI_@outlook.com

CE FC RoHS
MADE IN CHINA

-6-

FCC Requirement

Any changes or modifications not expressly approved by the party responsible for compliance could void the user's authority to operate the equipment.
This device complies with Part 15 of the FCC Rules. Operation is subject to the following two conditions:
(1) this device may not cause harmful interference, and
(2) this device must accept any interference received, including interference that may cause undesired operation.

Note: This equipment has been tested and found to comply with the limits for a Class B digital device, pursuant to Part 15 of the FCC Rules. These limits are designed to provide reasonable protection against harmful interference in a residential installation. This equipment generates, uses, and can radiate radio frequency energy, and if not installed and used in accordance with the instructions, may cause harmful interference to radio communications. However, there is no guarantee that interference will not occur in a particular installation. If this equipment does cause harmful interference to radio or television reception, which can be determined by turning the equipment off and on, the user is encouraged to try to correct the interference by one or more of the following measures:
- Reorient or relocate the receiving antenna.
- Increase the separation between the equipment and receiver.
- Connect the equipment into an outlet on a circuit different from that to which the receiver is connected.
- Consult the dealer or an experienced radio/TV technician for help.

FCC ID:2A69P-MC20

70 mm