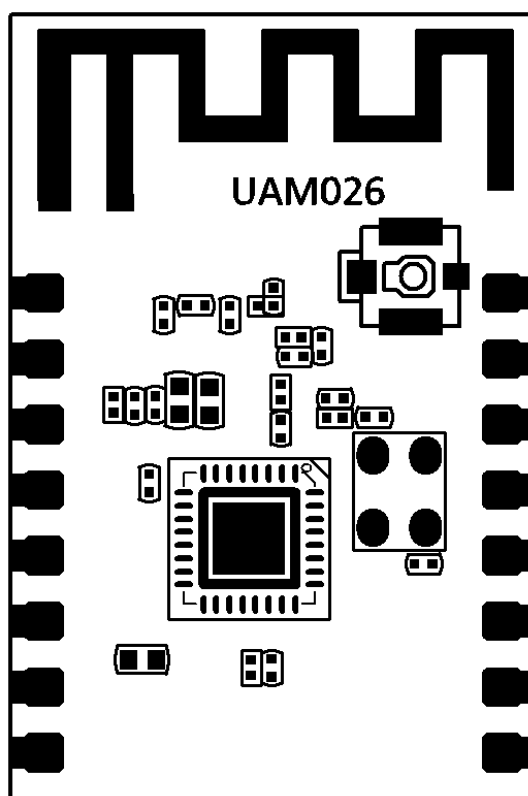
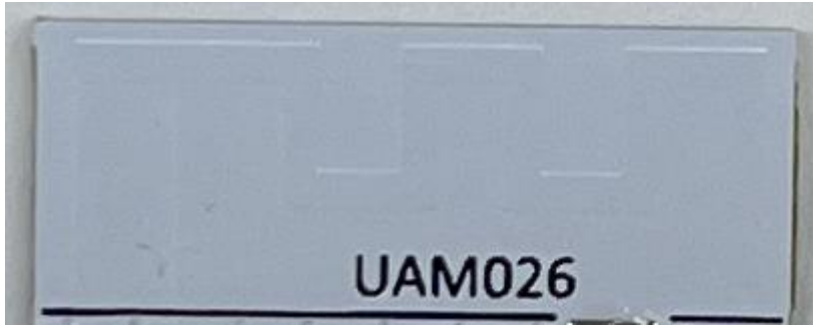


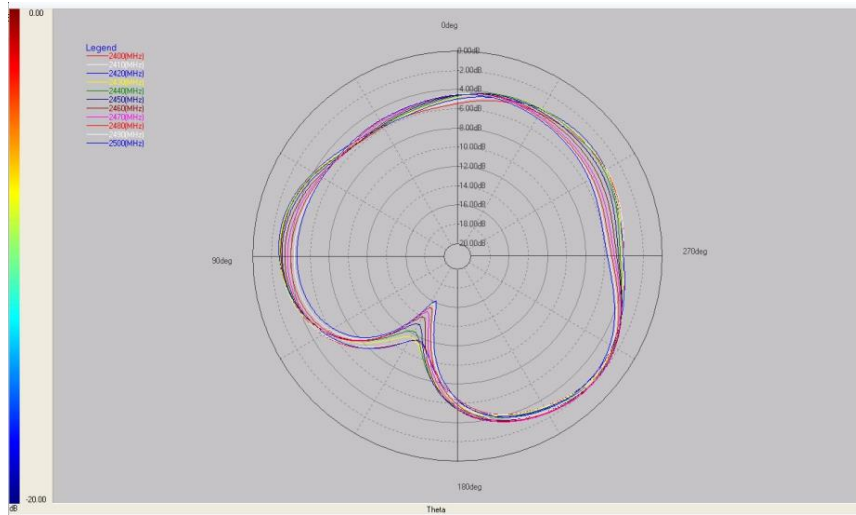
1. Antenna Specification

Item	Specification
Working Frequency Range	2.4-2.5GHz
Model Name	JX-WIFI-Antenna
Manufacturer	Shenzhen Uascent Technology Co.,Ltd
Manufacturer Address	7th Floor, Building A2, Chuangzhiyuncheng, Liuxian Avenue, Xili Community, Shenzhen, China.
Max PK Gain	2400MHz:-1.3dBi 2450MHz:-1.3dBi 2500MHz:-1.3dBi
VSWR	2.0 Max
Polarization	Linear
Type	PCB
Impedance	50 Ω

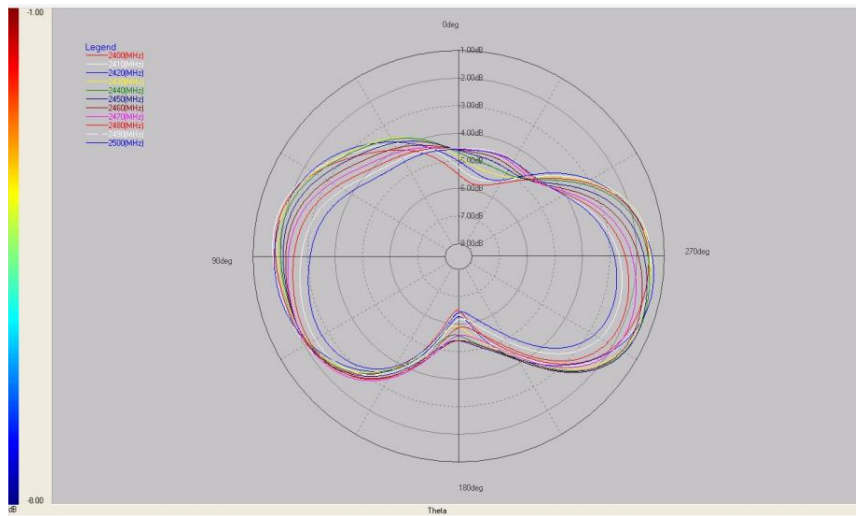




Phi=0



Phi=90



Theta=90

