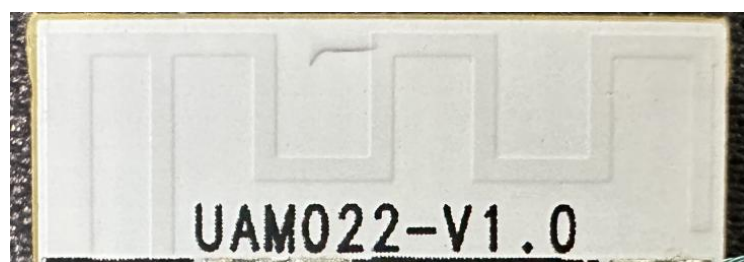
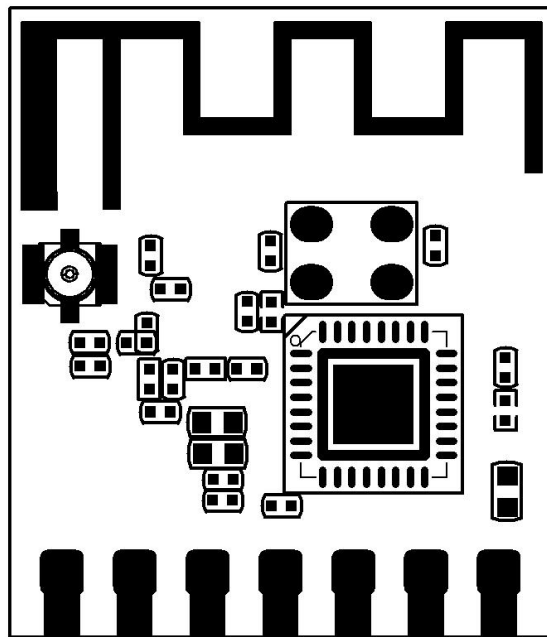
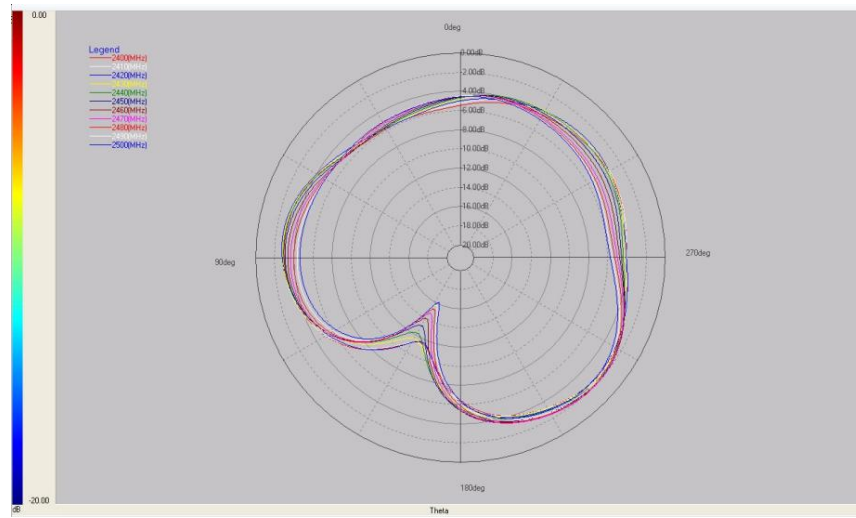


## 1. Antenna Specification

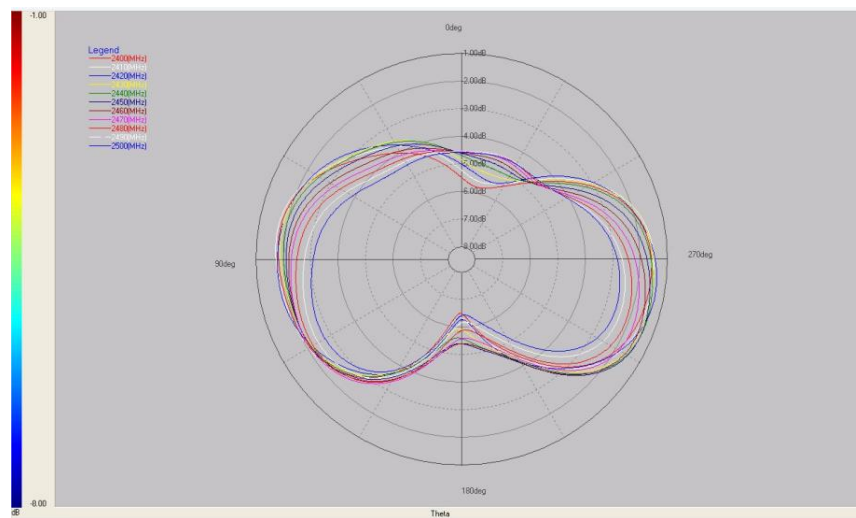
Item	Specification
Working Frequency Range	2.4-2.5GHz
Max PK Gain	2400MHz:-2.0 dBi 2450MHz:-1.3 dBi 2500MHz:-2.2 dBi
VSWR	2.0 Max
Polarization	Linear
Type	PCB
Impedance	50 $\Omega$



Phi=0



Phi=90



Theta=90

