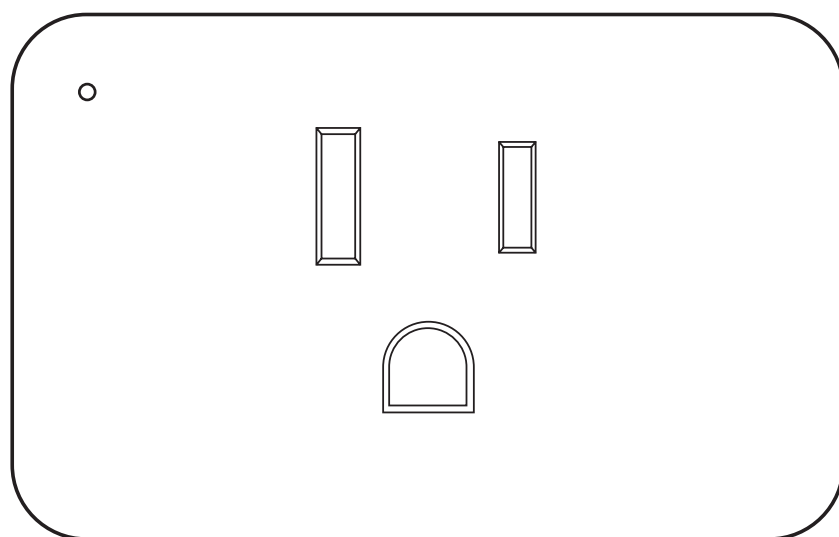


Smart Plug

User Manual



Model: ET10

Dear Valued Customers,

We would like to express our appreciation for choosing Eightree and being a part of our community. As an up-and-coming brand established in 2021, we are dedicated to developing and manufacturing high-quality smart home products.

Our mission is to make smart home technology accessible to everyone, regardless of budget or experience. We are committed to providing you with convenient and reliable smart home solutions that make your life easier.

Thank you for being a part of Eightree, and we look forward to continuing to serve you.

We are always happy to help and provide you with prompt support. If you ever need assistance, please feel free to contact us:

support.us@eightree.club

Catalog

Before Using	-----	01
Specifications	-----	03
Installation	-----	04
How to Use	-----	12
Third Party Control (Alexa, SmartThings and Google Assistant)	-----	14
Troubleshooting	-----	16
Safety Information	-----	17

Before Using

Thank you for choosing our smart plug ET10. Before you begin using it, please take a moment to read the following warm tips.

1. If reading this manual is difficult for you, please download the user manual from the Amazon listing for enlarged viewing.

2. This smart plug is only perfectly suitable for traditional electrical equipment, such as buttons, knobs and other control appliances, and is not suitable for remote control or touch screen equipment. This plug allows you to remotely control and automate your appliances from your cell phone or smart speaker.

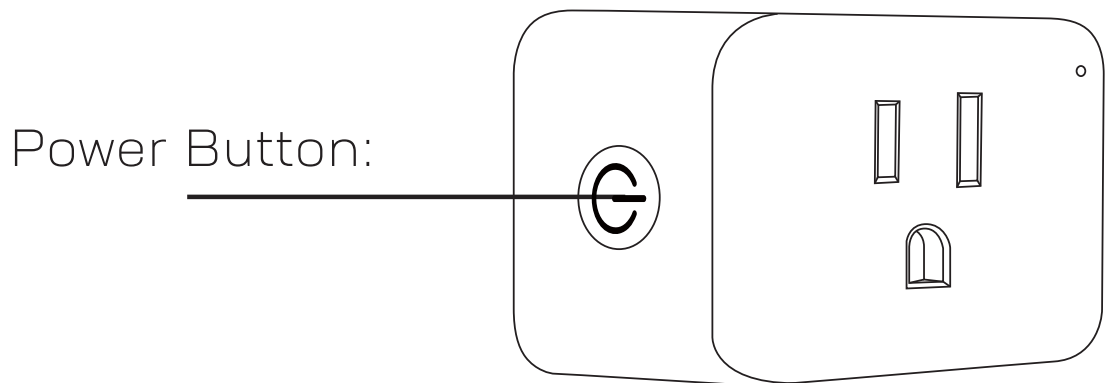
3. If you want to use a smart plug in a remote control or touch screen device, it is only applicable to turn off the device.

4. This smart plug only supports the 2.4GHz

network environment. If your home has a dual-band router, it needs to be split into two frequency bands: 2.4GHz and 5GHz; and when connecting, please ensure that your mobile phone is only connected to the 2.4GHz network.

5. If you encounter any problems when using the smart plug, you can contact our support team at: support.us@eighttree.club.

At a Glance



- Press to turn ON or OFF the smart plug.
- Press and hold (for 5 seconds) until the LED flashes to initiate the app onboarding process or factory reset the smart plug.

LED Indicator Status:

No light: Power off

Light flashing: Pairing mode

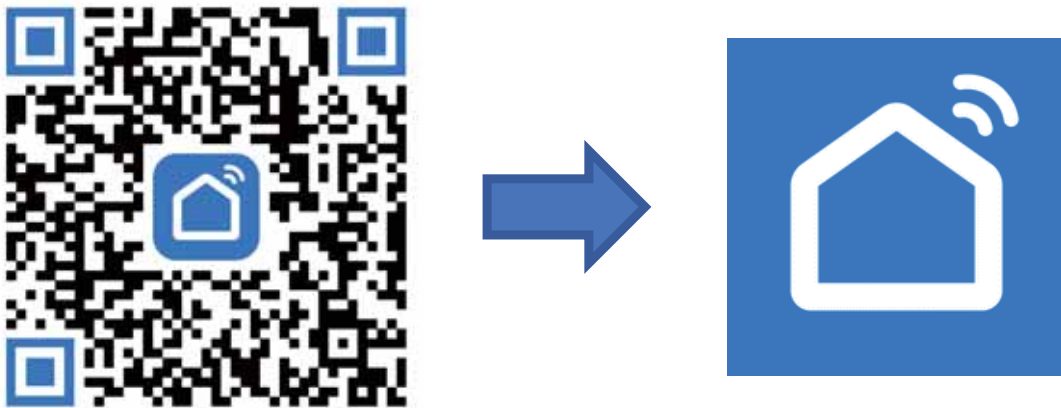
Solid blue light: Power on

Specifications:

Model/HVIN	ET10
Material	PC+ABS
Rated Voltage	AC 100-240V
Rated Current	15A
Max. Power	1500W
Working Temp	-20~50°C
FCC ID	2A670-ETPLUG
IC ID	28652-ETPLUG
Wi-Fi Standard	Only Support 2.4 GHz
Warranty	2 Years

Installation:

1. Search and download Smart Life APP in Google Play Store or APP Store. If you can not find Smart Life APP, please scan the following QR code (It is recommended to use the original camera of your mobile phone to scan);



2. Open the Smart Life APP, create a Smart Life account and log in. If you already have one, please log in directly;

3. Plug the smart plug into the socket;

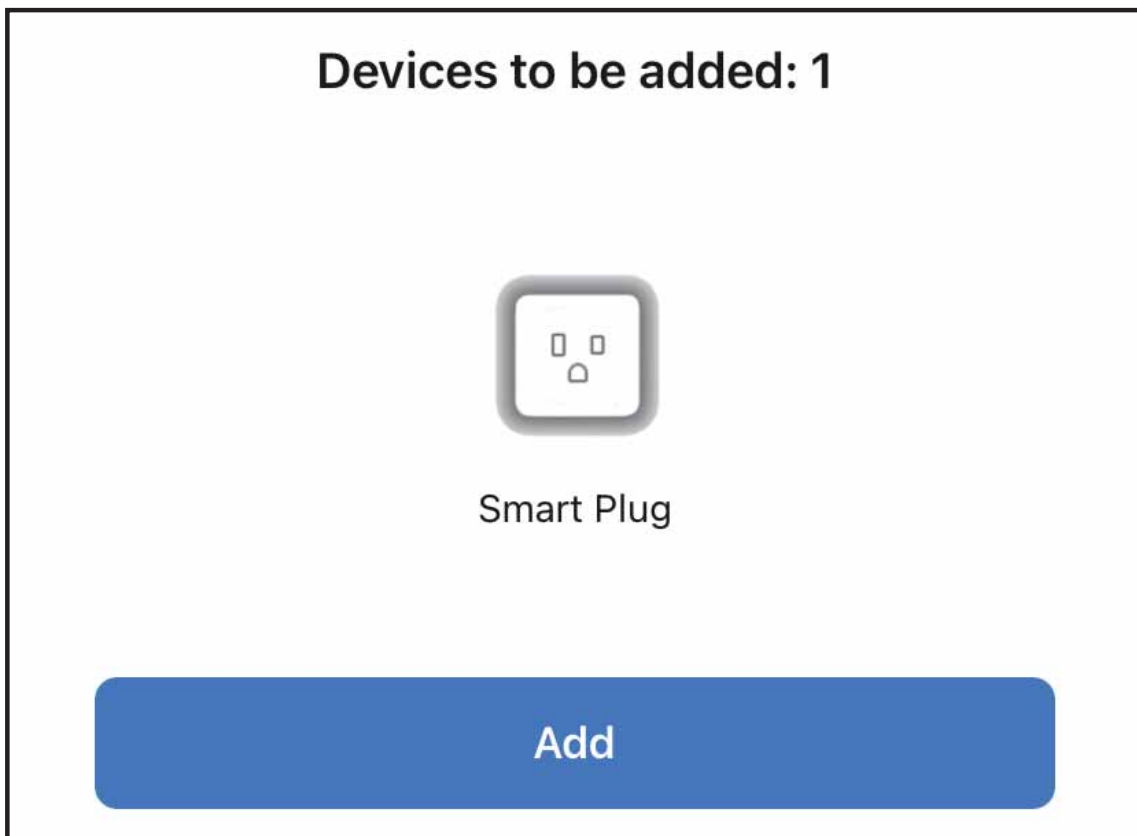
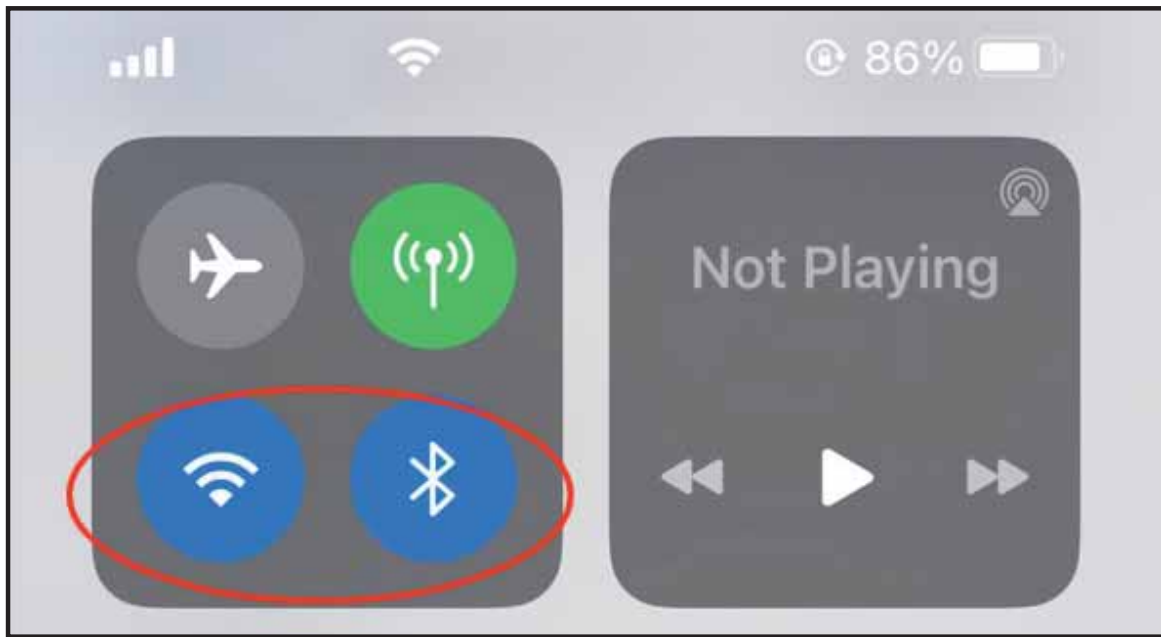
4. Choose one of the following three connection methods to connect. It is recommended to follow the first one (BLE Mode).

Notice:

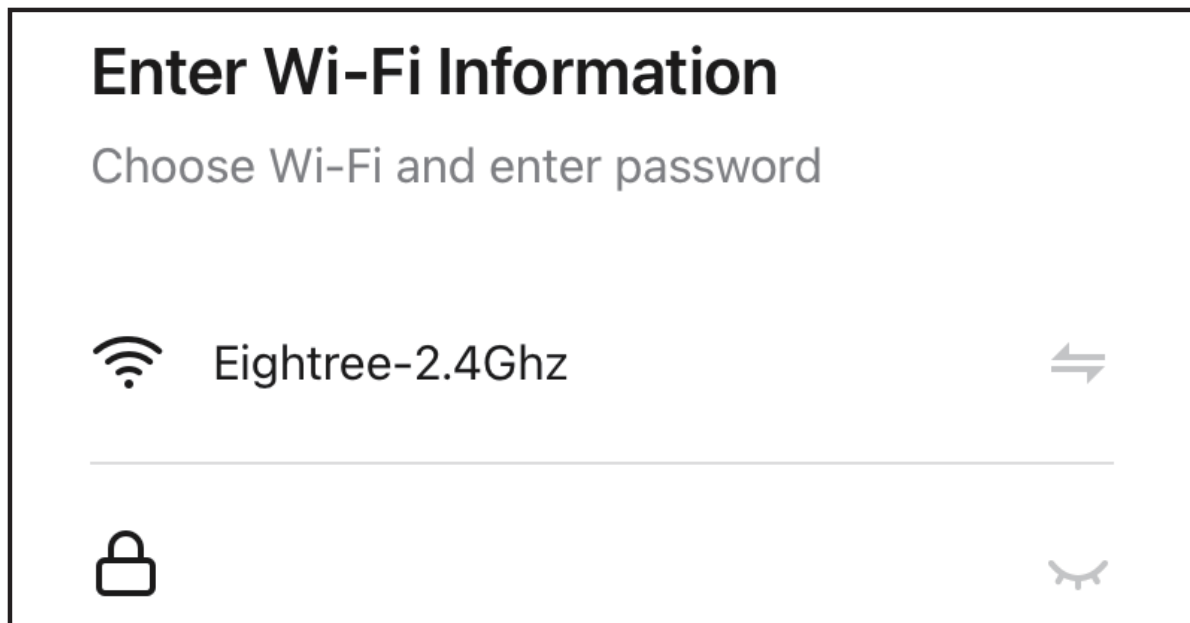
- a. Please make sure the distance between the smart plug and the router is within 100ft;
- b. Before starting the connection, make sure your mobile phone has its Bluetooth turned on and is connected to the 2.4GHz network only.

A)BLE Mode (Recommended):

- Step 1. Turn on the Bluetooth of your mobile phone and connect your phone to the 2.4GHz Wi-Fi network.
- Step 2. Connect the plug to the power source and long press the power button for more than 5s till the indicator flashes.
- Step 3. Launch the Smart Life app, the device will be found automatically.



Step 4. Tap Add and enter the name and password of the 2.4GHz Wi-Fi network.



Step 5. Wait for connection (may take up to 2 minutes).

B) AP Mode

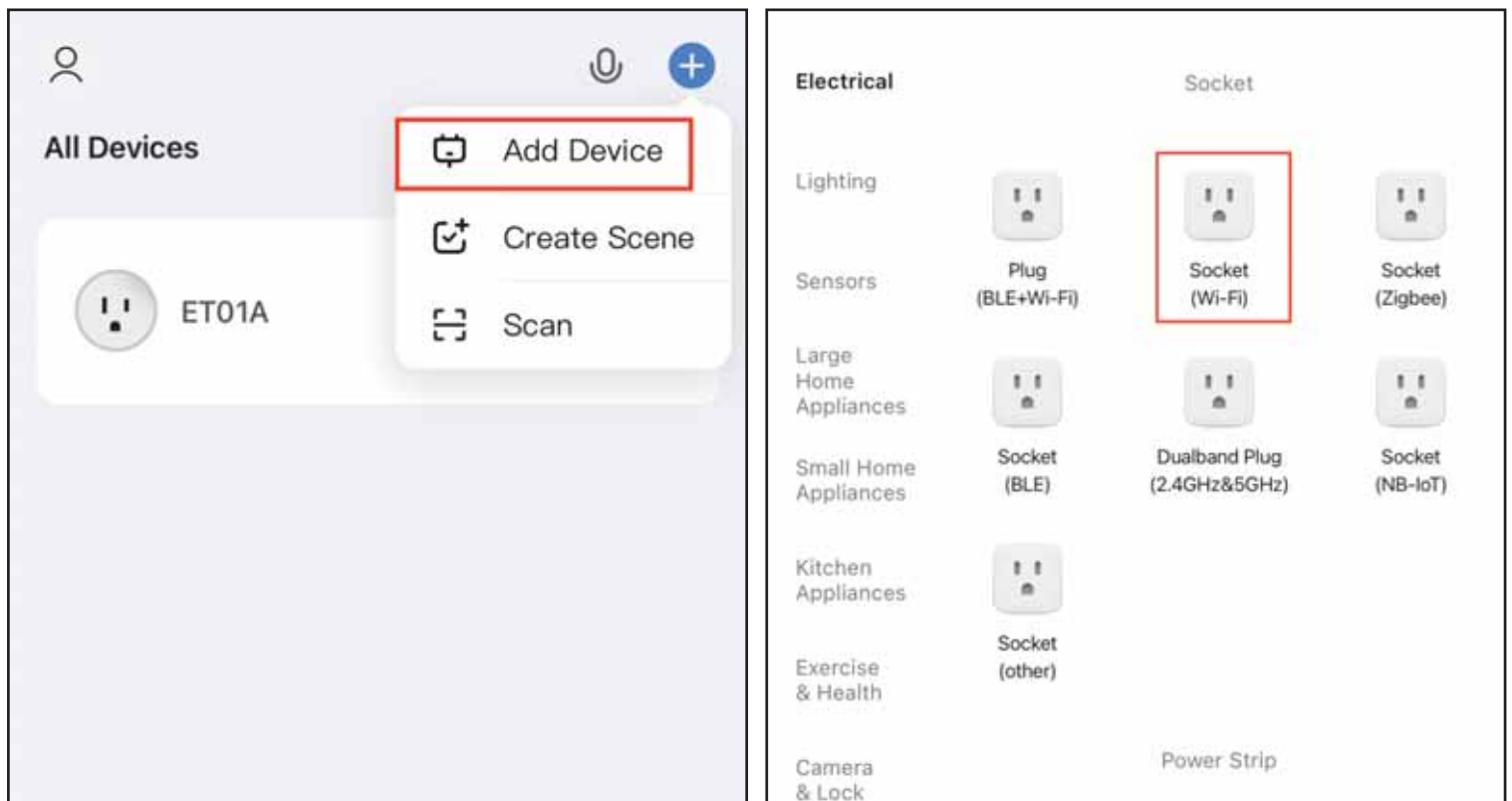
Step1. Connect your phone to the 2.4GHz Wi-Fi network.

Step2. Long press the power button for 5s till the indicator flashes slowly (1 time every 2 seconds); If it's flashing quickly, press and hold for 5s to switch to slow flashing mode.

Step3. Launch Smart Life APP>Tap Add device>Choose "Socket (Wi-Fi)">Enter the name & password of the 2.4GHz Wi-Fi network>Tap "Blink Slowly".

Step4. Connect your plug to the hotspot named SmartLife-XXXX or SL-XXXX, and back to Smart Life APP.

Step5. Wait for connection (may take up to 2 minutes).



Reset the device

Bluetooth

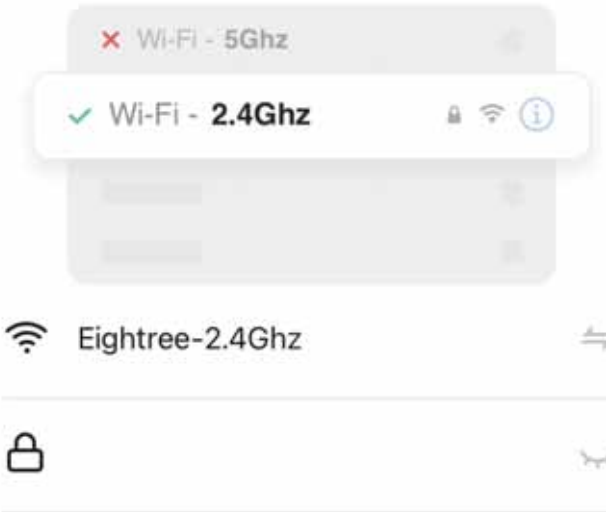
Wi-Fi Mode



Power on the device after it has been powered off for 10s.

Select 2.4 GHz Wi-Fi Network and enter password.

If your Wi-Fi is 5GHz, please set it to be 2.4GHz.
[Common router setting method](#)




Confirm the indicator is blinking

Select the status of the indicator light or hear the beep:

Blink Slowly

Blink Quickly



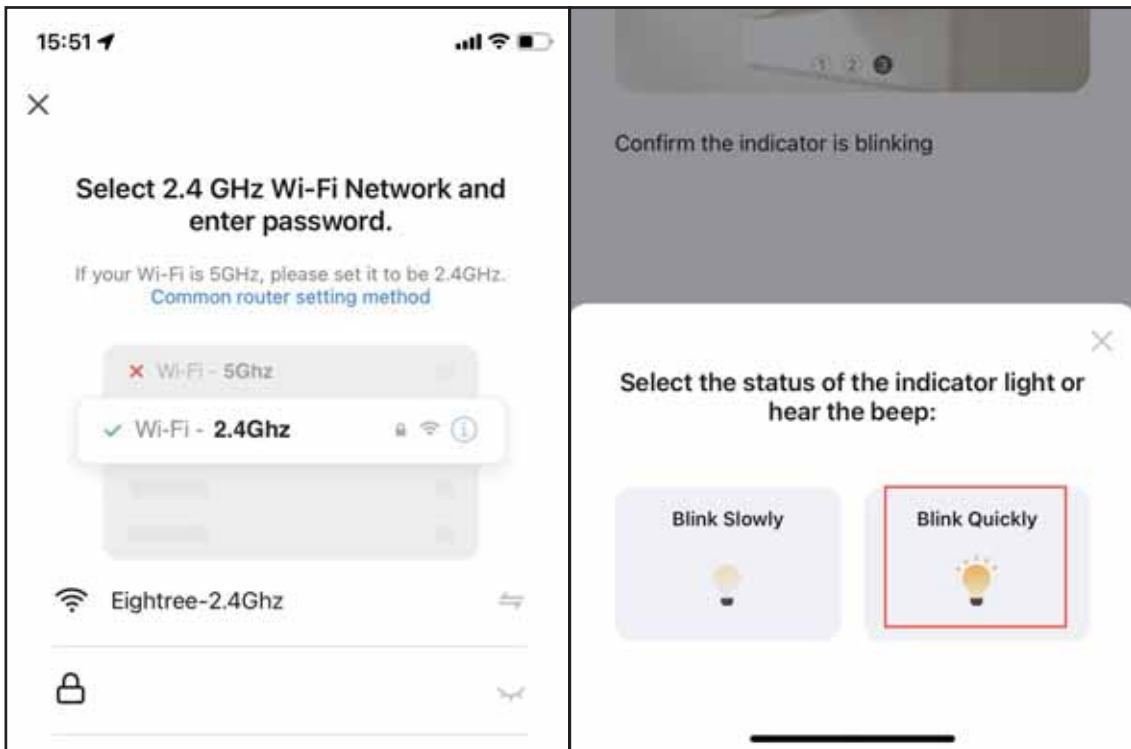
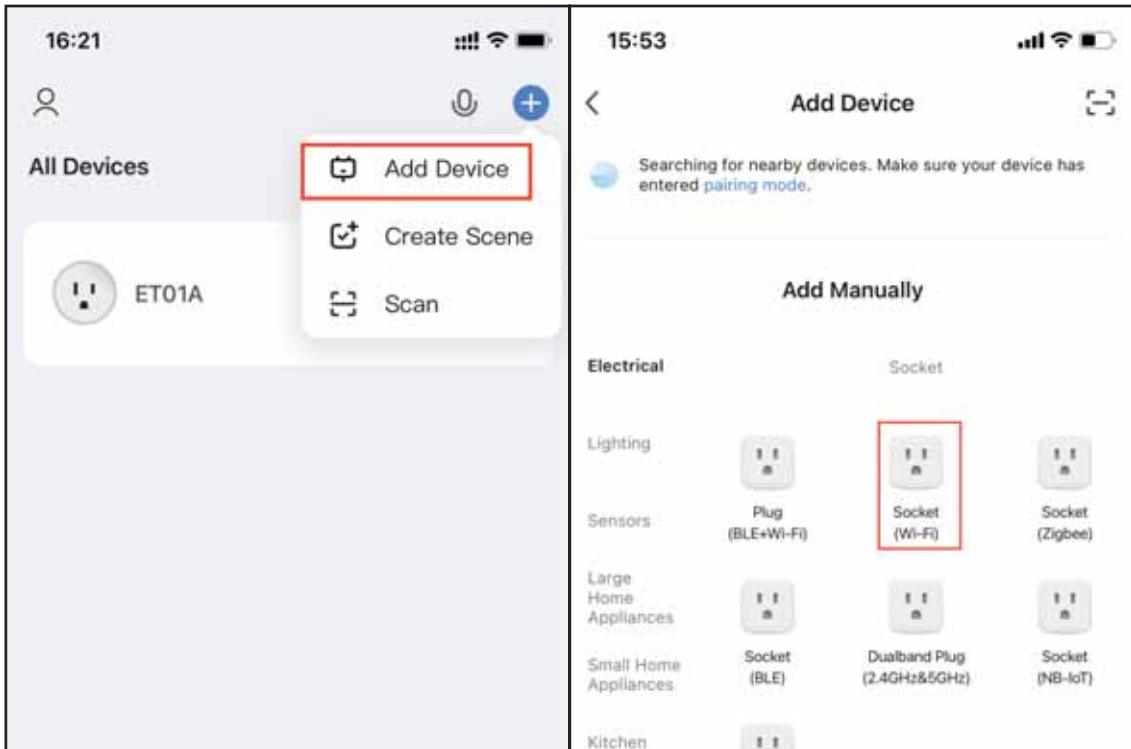
Connect your mobile phone to the device's hotspot

1 Connect your phone to the hotspot shown below:



C)EZ Mode:

- Step 1. Connect your phone to the 2.4GHz Wi-Fi Network.
- Step 2. Long press the power button till the indicator flashes quickly (Flashes twice per second).
- Step 3. Launch the Smart Life app and tap "Add device".
- Step 4. Choose "Socket (Wi-Fi)" and enter the name and password of the 2.4GHz Wi-Fi network.
- Step 5. Tap "Blink Quickly".
- Step 6. Wait for connection (may take up to 2 minutes).



How to Use:

1. Remote control: Turn on/off the device remotely through the mobile phone anytime, anywhere.









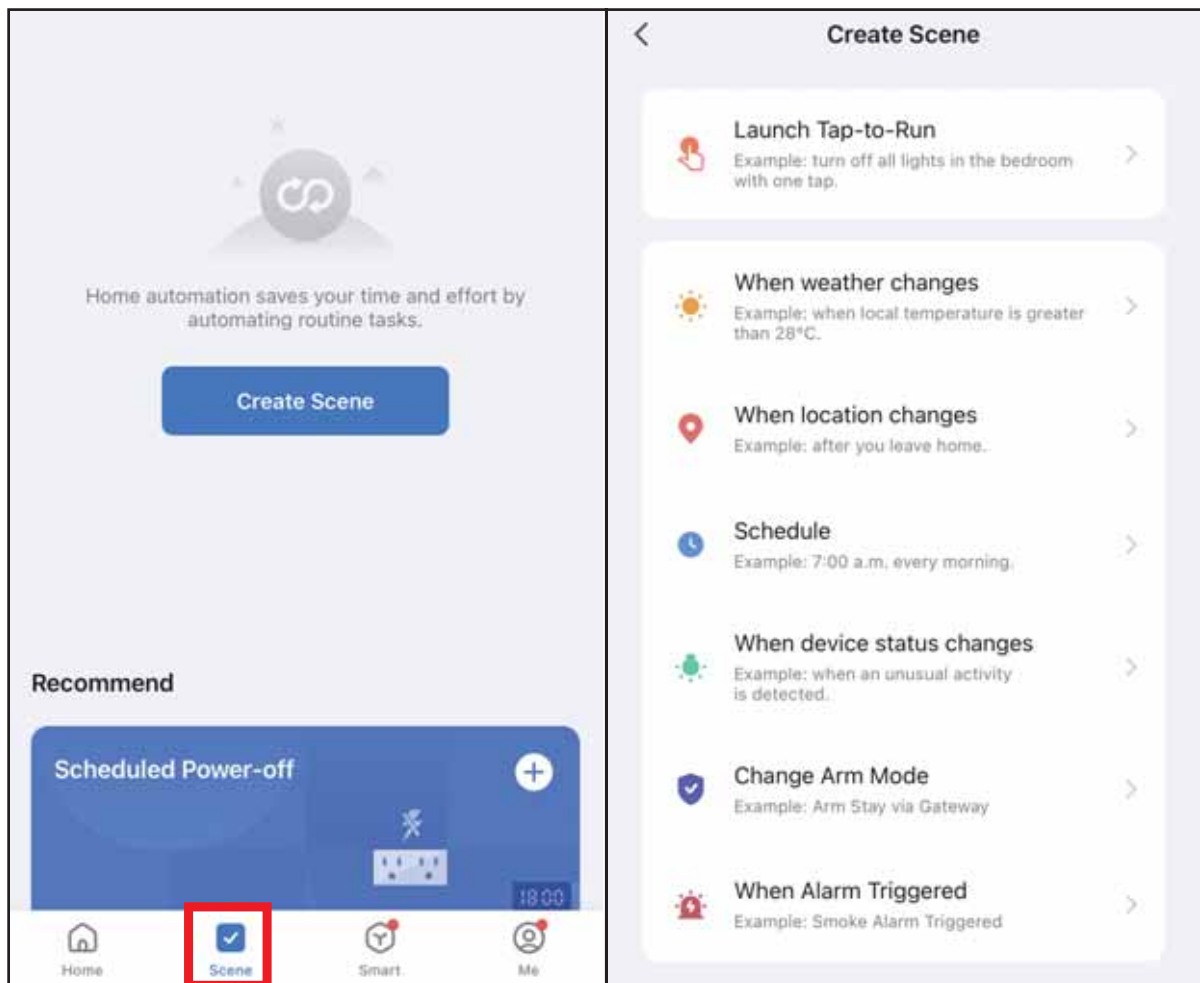
2. Timer:

a. Schedule: Schedule your smart plug to turn on/off automatically to simplify your daily routine;

b. Countdown: Set the countdown timer and your smart plug will automatically be toggled after the time ends (e.g., 1: turn on/off the plug after 10 mins);

3. Scene: Turn the plug on/off based on changes in weather, location, or device status, etc.

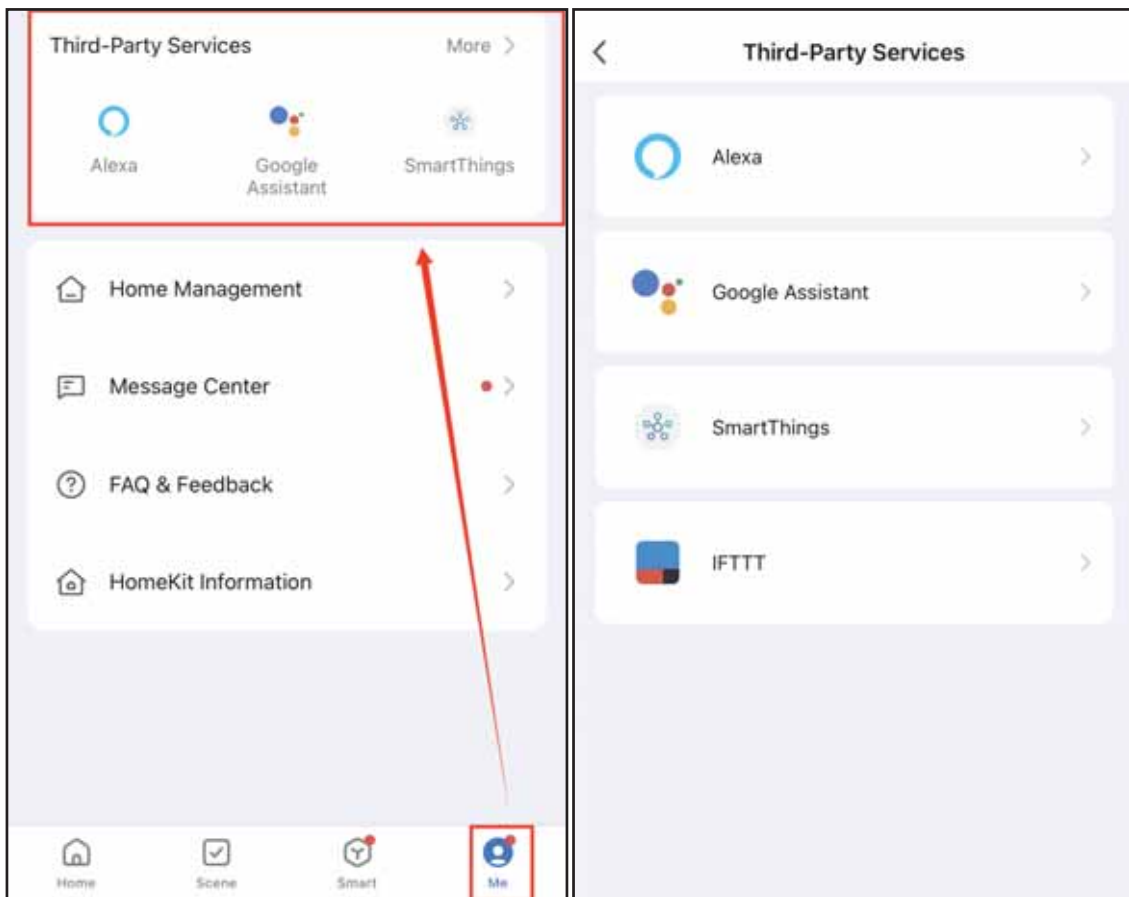
Select timing type	
 Schedule The device can be switched on and off at specified time points	
 Sunrise The equipment is on/off before sunrise, during sunrise and after sunrise	08 09
 Sunset The equipment is on/off before sunset, at sunset, and after sunset	00 Hour 10 Minute
 Circulate The device can be turned on/off repeatedly during the set period	01 11 02 12
 Random The equipment can be turned on/off at random during the set period, creating the illusion that people are at home	
 Delay off Each time the device is turned on, it will automatically turn off after the set time	



Third Party Control (Alexa, SmartThings and Google Assistant)

Step 1. Make sure you have connected the plug to the "Smart Life" App first.

Step 2. Launch the Smart Life app > Tap "Me" > Third-party service > Follow the app prompts.



Step 3. You can also scan the QR code below to watch detailed video tutorials.



Troubleshooting

1. Fail to connect to Wi-Fi:

- Make sure the distance between the smart plug and the router is within 100ft;
- Check the Wi-Fi connection of the smart plug (Only Support 2.4GHz Wi-Fi);
- Make Sure the Wi-Fi name and password you entered is correct.

2. Device Offline:

- Make Sure your Wi-Fi signal is good and stable;
- Check if the Wi-Fi name or password has been changed.
- Try to reset the smart plug.

3. The smart plug can be turned on/off via APP, but the connected device does not work:

- Manually turn the plug on/off to see if the LED lights up/off normally to eliminate the

- socket faults;
- Ensure the connected device is compatible and functioning properly.
 - If the plug is defective, please contact our support team for a new replacement or refund.

If the above tips can't help you, please contact our support team at:

Support.us@eighttree.club

Safety Information

- This device is for indoor use only.
- Do not use this device in wet or damp locations.
- Do not use this device with appliances or devices that exceed the rated voltage or current.
- Unplug the device during thunderstorms or if not in use for extended periods.
- Do not disassemble or attempt to repair the device on your own.

FCC Statement

This equipment has been tested and found to comply with the limits for a Class B digital device, pursuant to part 15 of the FCC rules. These limits are designed to provide reasonable protection against harmful interference in a residential installation. This equipment generates, uses and can radiate radio frequency energy and, if not installed and used in accordance with the instructions, may cause harmful interference to radio communications.

However, there is no guarantee that interference will not occur in a particular installation. If this equipment does cause harmful interference to radio or television reception, which can be determined by turning the equipment off and on, the user is encouraged to try to correct the interference by one or more of the following measures:

Reorient or relocate the receiving antenna.

Increase the separation between the equipment and receiver.

Connect the equipment into an outlet on a circuit different from that to which the receiver is connected.

Consult the dealer or an experienced radio/TV technician for help.

To assure continued compliance, any changes or modifications not expressly approved by the party. Responsible for compliance could void the user's authority to operate this equipment. [Example use only shielded interface

cables when connecting to computer or peripheral devices].

This equipment complies with Part 15 of the FCC Rules. Operation is subject to the following two conditions:

[1] This device may not cause harmful interference.

[2] This device must accept any interference received, including interference that may cause undesired operation.

FCC Radiation Exposure Statement:

The equipment complies with FCC Radiation exposure limits set forth for uncontrolled environment. This equipment should be installed and operated with minimum distance 20cm between the radiator and your body.

IC Warning

-English-This device complies with Industry Canada licence -exempt RSS standard. Operation is subject to the following two conditions: [1] this device may not cause interference. and [2] this device must accept any interference, including interference that may cause undesired operation of the device.

Under Industry Canada regulations, this radio transmitter may only operate using an antenna of a type and maximum [or lesser] gain approved for the transmitter by Industry Canada. To reduce potential radio interference to other users, the antenna type and its gain should be so chosen that the equivalent isotropically radiated power [e.i.r.p.] is

not more than that necessary for successful communication.
-French-Le présent appareil est conforme aux CNR d'Industrie Canada applicables aux appareils radio exemptés de licence. L'exploitation est autorisée aux deux conditions suivantes: [1] l'appareil ne doit pas produire de brouillage, et [2] l'utilisateur de l'appareil doit accepter tout brouillage radio électrique subi, même si le brouillage est susceptible d'en compromettre le fonctionnement.

Selon les règlements d'Industrie Canada, cet émetteur radio ne peut fonctionner qu'à l'aide d'une antenne d'un type et d'un gain maximal [ou moindre] approuvé pour l'émetteur par Industrie Canada. Pour réduire les interférences radio électriques potentielles avec d'autres utilisateurs, le type d'antenne et son gain doivent être choisis de telle sorte que la puissance équivalente rayonnée [p.i.r.e.] ne soit pas supérieure à celle nécessaire pour une communication réussie.

Déclaration d'exposition aux rayonnements de l'ISED :
L'équipement est conforme aux limites d'exposition aux rayonnements de l'ISED fixées pour un environnement non contrôlé. Cet équipement doit être installé et utilisé avec une distance minimale de 20 cm entre le radiateur et votre corps.

Manufacturer Information:

Shenzhen Realwe Innovation Technology Co., Ltd
Room 402, Building 6, No. 8 Huamei Road,
Tantou Community, Songgang Street,
Bao'an District, Shenzhen, China, 518105
Email: Manufacturer@eightree.club

Made in China



RoHS



CONFORMS TO UL STD. 60730-1
CERTIFIED TO CSA STD. E60730-1

Intertek
5012520