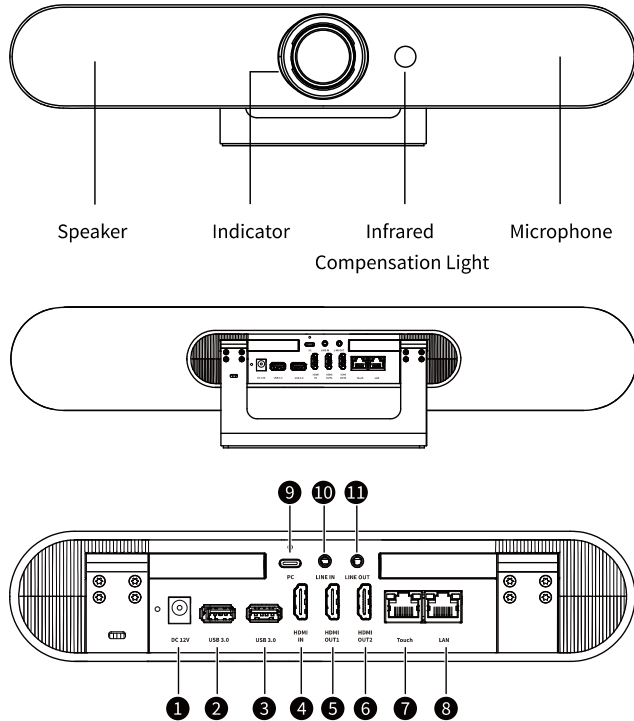


All-in-One Telehealth Video Terminal

Quick Start Guide

1 Appearance and Interface



No.	Interface	Description
1	DC 12V	Power interface
2	USB 3.0	Connect to U-disk, mouse, keyboard and other USB devices.
3	USB 3.0	Connect to U-disk, mouse, keyboard and other USB devices.
4	HDMI IN	Connect to PC or camera, support audio input.
5	HDMI OUT1	Connected to the terminal and HDTV with HDMI cable, support audio output and it will be muted automatically while use the built-in speaker.
6	HDMI OUT2	Connected to the terminal and HDTV with HDMI cable.
7	Touch	Connect to tablet and other control device.
8	LAN	Connect the terminal to the network with the network cable.
9	PC	Used as a camera and speakerphone when connect to PC.
10	LINE IN	3.5mm audio input interface
11	LINE OUT	3.5mm audio output interface

2 Installation and Connection



Warning

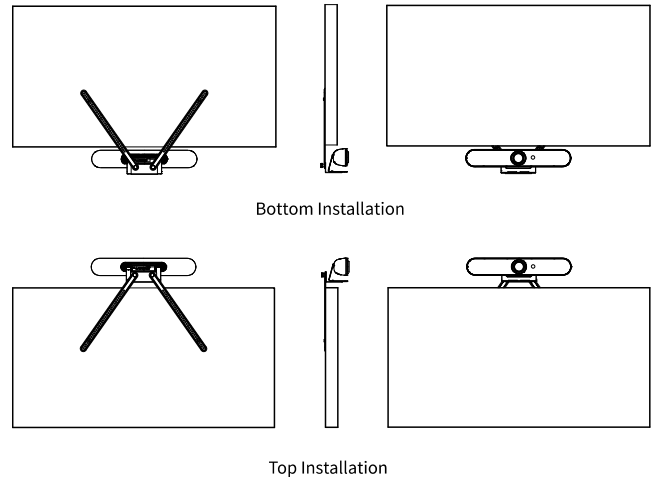
Operating this equipment in a residential environment may cause radio interference.

The terminal can be placed on horizontal desktop or installed on the TV and wall with bracket.

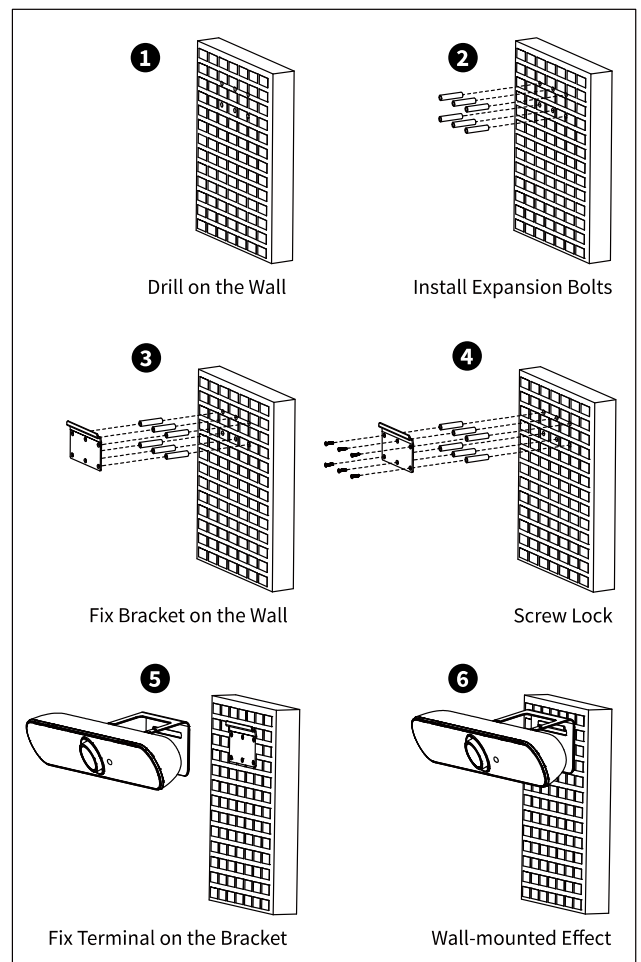
Desktop Installation

Place the terminal on the desktop, keep the desktop steady and pay attention to the anti-slip.

Install on TV with Bracket (optional)

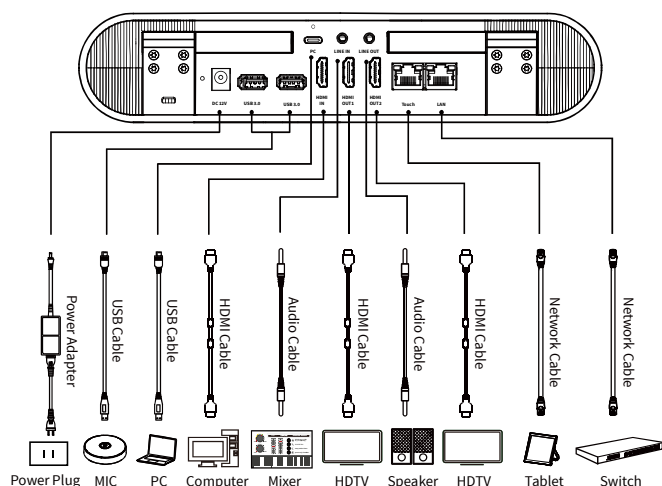


Install on Wall with Bracket



Connection

The cable connections shown in the following figure contains optional configurations and for reference only. Please connect the cables according to actual needs.



Power Connect

Connect the power cord to the supplied power adapter, and then connect the terminal to the power outlet with the power adaptor.

Network Connect

- Connect LAN with the network cable;
- Or, connect the LAN via Wi-Fi.

Audio Input

- Audio input via the built-in microphone;
- Or, connect a microphone to the USB interface with the USB cable.
- Connect a mixer to the LINE IN interface with the 3.5mm cable.

Audio Output

- Audio output via the built-in speaker;
- Or, connect TV to the HDMI OUT1 interface with the HDMI cable;
- Or, connect a speaker to the LINE OUT interface with the 3.5mm cable.

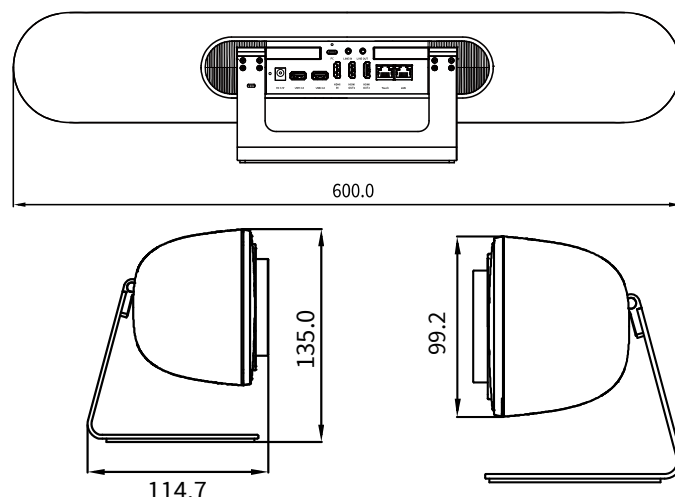
Image Input

- Image input via the built-in camera.
- Connect camera to the HDMI IN interface with the HDMI cable;
- Or, connect a PC or other devices to the HDMI IN interface with the HDMI cable.

Image Output

- Connect TV and other display devices to the HDMI OUT1 interface with the HDMI cable to output the main image.
- Connect TV and other display devices to the HDMI OUT2 interface with the HDMI cable to output the second image.

3 Product Dimension



4 Troubleshooting

No Response

Please try to reboot APS100.

Not Enough Storage Space

- 1) System storage space is low, please make sure you have 250MB of free space and reboot APS100.
- 2) The total storage of APS100 is 8G, when storage space is not enough, please try to clear some data to release the storage.

Wi-Fi Network Cannot Access the Internet

Please contact with Caregility IT department to check whether the device has the permission to access the Internet.

5 Cleaning Guide

For the Whole Camera Cleaning

The user can take a rag, dip in Ethyl Alcohol Absolute to wipe the appearance gently.

For the Speaker Cover Cleaning

Fabric model: CY-B51-1, the main component is polyester fiber, the surface of the fabric is treated with waterproof technology, and the backside viscose technology is added.

Cleaning Precautions

- Wipe with soft brush at room temperature.
- No long-term alkali resistance, please choose a neutral volatile cleaning agent.

*Although we have done and passed the corrosion resistance test of chemical reagents, for the long-term cleaning and maintenance of APS100, it is recommended to use Ethyl Alcohol Absolute for cleaning.

6 Important Safety Instructions

- Parts of the ME EQUIPMENT that are not serviced or maintained while in use with the patient.
- Instructions provided indicating not to position ME EQUIPMENT to make it difficult to operate the disconnection device.
- Warning statement that addressed the HAZARDS the ME EQUIPMENT.
- Unplug the power cable to power off.
- Do not leave the equipment in an uncontrolled environment where the storage temperature is below -20 C (-4 F) or above 60 C (140 F) and the relative humidity is below 30% or above 75% it may damage the equipment.

7 FCC Compliance Statements

This device complies with Part 15 of the FCC Rules. Operation is subject to the following two conditions: (1) this device may not cause harmful interference, and (2) this device must accept any interference received, including interference that may cause undesired operation.



Note: This equipment has been tested and found to comply with the limits for a Class B digital device, pursuant to Part 15 of the FCC Rules. These limits are designed to provide reasonable protection against harmful interference in a residential installation. This equipment generates, uses and can radiate radio frequency energy and, if not installed and used in accordance with the instructions, may cause harmful interference to radio communications. However, there is no guarantee that interference will not occur in a particular installation.

If this equipment does cause harmful interference to radio or television reception, which can be determined by turning the equipment off and on, the user is encouraged to try to correct the interference by one or more of the following measures:

- Reorient or relocate the receiving antenna.
- Increase the separation between the equipment and receiver.
- Connect the equipment into an outlet on a circuit different from that to which the receiver is connected.
- Consult the dealer or an experienced radio/TV technician for help.

Caution: Changes or modifications not expressly approved by the party responsible for compliance could void the user's authority to operate the equipment.

This equipment complies with FCC radiation exposure limits set forth for an uncontrolled environment. This equipment should be installed and operated with minimum distance 20cm between the radiator and your body.

8 ISED Compliance Statements

This device contains licence-exempt transmitter(s)/receiver(s) that comply with Innovation, Science and Economic Development Canada's licence-exempt RSS(s). Operation is subject to the following two conditions: (1) This device may not cause interference. (2) This device must accept any interference, including interference that may cause undesired operation of the device. L'émetteur/récepteur exempt de licence contenu dans le présent appareil est conforme aux CNR d'Innovation, Sciences et Développement économique Canada applicables aux appareils radio exempts de licence. L'exploitation est autorisée aux deux conditions suivantes : (1) L'appareil ne doit pas produire de brouillage; (2) L'appareil doit accepter tout brouillage radioélectrique subi, même si le brouillage est susceptible d'en compromettre le fonctionnement.

This equipment complies with IC RSS-102 radiation exposure limits set forth for an uncontrolled environment. This equipment should be installed and operated with minimum distance 20cm between the radiator and your body.

Cet équipement est conforme aux limites d'exposition aux radiations IC CNR-102 établies pour un environnement non contrôlé. Cet équipement doit être installé et utilisé avec une distance minimale de 20cm entre le radiateur et votre corps.

- a) The device for operation in the band 5150-5250 MHz is only for indoor use to reduce the potential for harmful interference to co-channel mobile satellite systems;
- b) The maximum antenna gain permitted for devices in the band 5725-5825 MHz shall comply with the e.i.r.p. limits specified for point-to-point and non point-to-point operation as appropriate.
- c) les dispositifs fonctionnant dans la bande 5150-5250 MHz sont réservés uniquement pour une utilisation à l'intérieur afin de réduire les risques de brouillage préjudiciable aux systèmes de satellites mobiles utilisant les mêmes canaux;

Le gain maximal d'antenne permis (pour les dispositifs utilisant la bande 5725-5825 MHz). doit se conformer à la limite de p.i.r.e. spécifiée pour l'exploitation point à point et non point à point, selon le cas.

9 EMC Guidance

Warning: Don't use near active HF surgical equipment and the RF shielded room of an ME system for magnetic resonance imaging, where the intensity of EM disturbances is high.

Warning: Use of this equipment adjacent to or stacked with other equipment should be avoided because it could result in improper operation. If such use is necessary, this equipment and the other equipment should be observed to verify that they are operating normally.

Warning: Use of accessories, transducers, and cables other than those specified or provided by the manufacturer of this equipment could result in increased electromagnetic emissions or decreased electromagnetic immunity of this equipment and result in improper operation.

Warning: Portable RF communications equipment (including peripherals such as antenna cables and external antennas) should be used no closer than 12 in (30 cm) to any part of the equipment, including cables specified by the manufacturer. Otherwise, degradation of the performance of this equipment could result.

Guidance and Manufacturer's Declaration – Electromagnetic Emissions	
Emissions test	Compliance
RF emissions CISPR 11	Group 1
RF emissions CISPR 11	Class B
Harmonic emissions IEC 61000-3-2	Class A
Voltage fluctuations/ flicker emissions IEC 61000-3-3	Complies


10 Product Specifications



You should now recycle your waste electrical goods and in doing so help the environment. This symbol means an electrical product should not be disposed of with normal household waste. Please ensure it is taken to a suitable facility for disposal when finished with.

CE Hereby, Caregility declare that the radio equipment type APS100 is compliance with Directive 2014/53/EU.

CB The equipment has passed IEC certification entries, and CB mark is allowed to be added legally.

 Users are recommended to read this manual before using this device.

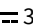
Operating Environment:

Temperature: 0°C ~ 40°C
Relative Humidity: 10% ~ 80% R.H.
Atmospheric Pressure: 80kPa ~ 106kPa

Storage Environment:

Temperature: -20°C ~ 60°C
Relative Humidity: 30% ~ 75% R.H.
Atmospheric Pressure: 70kPa ~106kPa;

Product Information:

Manufacturer Name: Caregility
Manufacturer Address: 81 Corbett Way Eatontown, NJ 07724,
United States of America
Model Name: APS100
Adapter: It is part of ME equipment
Device Input: 12V  3A
Power Input: AC100-240V~50/60Hz 1.2A
Serial No.: APS100YYYYMMDDXXXX (e.g. APS100202210140001)
Infrared Light: Wave crest 850nm, optical power 550mW (max.)
Intended Use: The APS100 is intended to provide two-way video and audio between the remote clinician and the patient bedside.