

# WIRELESS CHARGING

## PRODUCT INTRODUCTION

---

Due to the latest iPhone wireless charging system upgrade, the old wireless charging module cannot charge the iPhone before 2018. Therefore, the old one needs to be replaced with the latest wireless charging module to make it adapt to the latest iPhone. Our wireless charging module is fully developed according to the original structure and performance, which ensures the stability and safety of users when charging, and allows you to upgrade your car with the latest wireless charging function at a cheap price.

## HOW TO INSTALL

---

01

Remove the old wireless charging module (Different cars have different positions).



02

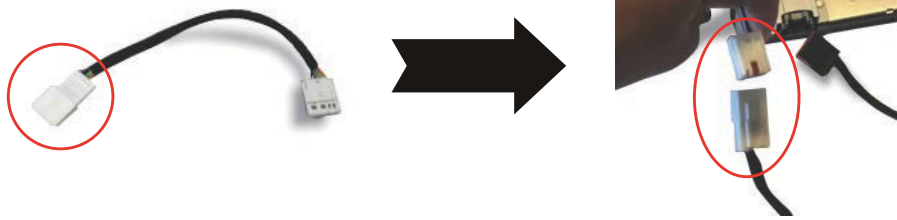
Unplug the old harness module.



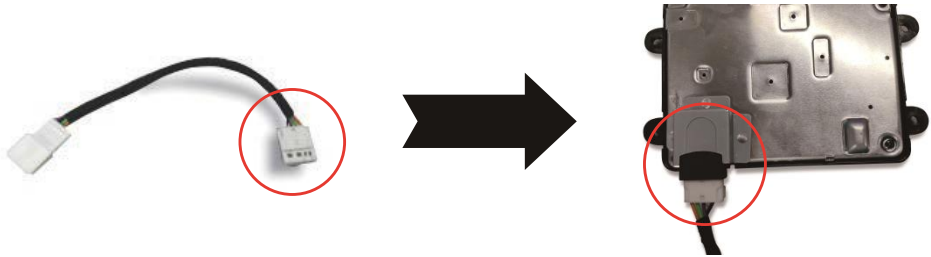
03

Connect the harness to the adapter harness of the new module.

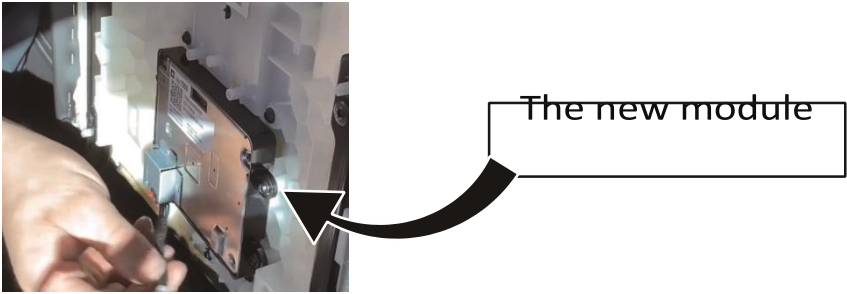
04



Connect the adapter harness plug with the new module.



Install the new module to the vehicle.



HOW TO WORK



When the new module is working, it still display a "lightning icon" on the screen (Different cars have different positions).

## FCC REQUIREMENT

---

This device complies with part 15 of the FCC Rules. Operation is subject to the following two conditions: (1) this device may not cause harmful interference, and (2) this device must accept any interference received, including interference that may cause undesired operation.

Any changes or modifications not expressly approved by the party responsible for compliance could void the user's authority to operate the equipment.

NOTE: This equipment has been tested and found to comply with the limits for a Class B digital device, pursuant to Part 15 of the FCC Rules. These limits are designed to provide reasonable protection against harmful interference in a residential installation. This equipment generates, uses and can radiate radio frequency energy and, if not installed and used in accordance with the instructions, may cause harmful interference to radio communications. However, there is no guarantee that interference will not occur in a particular installation.

If this equipment does cause harmful interference to radio or television reception, which can be determined by turning the equipment off and on, the user is encouraged to try to correct the interference by one or more of the following measures:

- Reorient or relocate the receiving antenna.
- Increase the separation between the equipment and receiver.
- Connect the equipment into an outlet on a circuit different from that to which the receiver is connected.
- Consult the dealer or an experienced radio/TV technician for help.

To maintain compliance with FCC's RF Exposure guidelines, This equipment should be installed and operated with minimum 20cm distance between the radiator and your body: Use only the supplied antenna.