

app download & setup twinkly

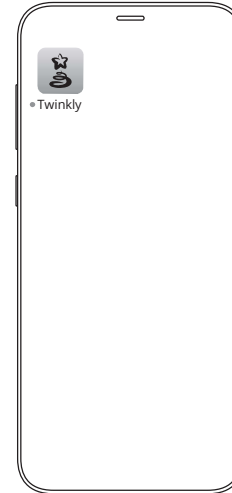
1.



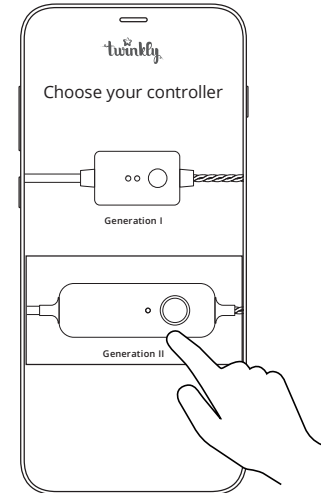
2.



3.



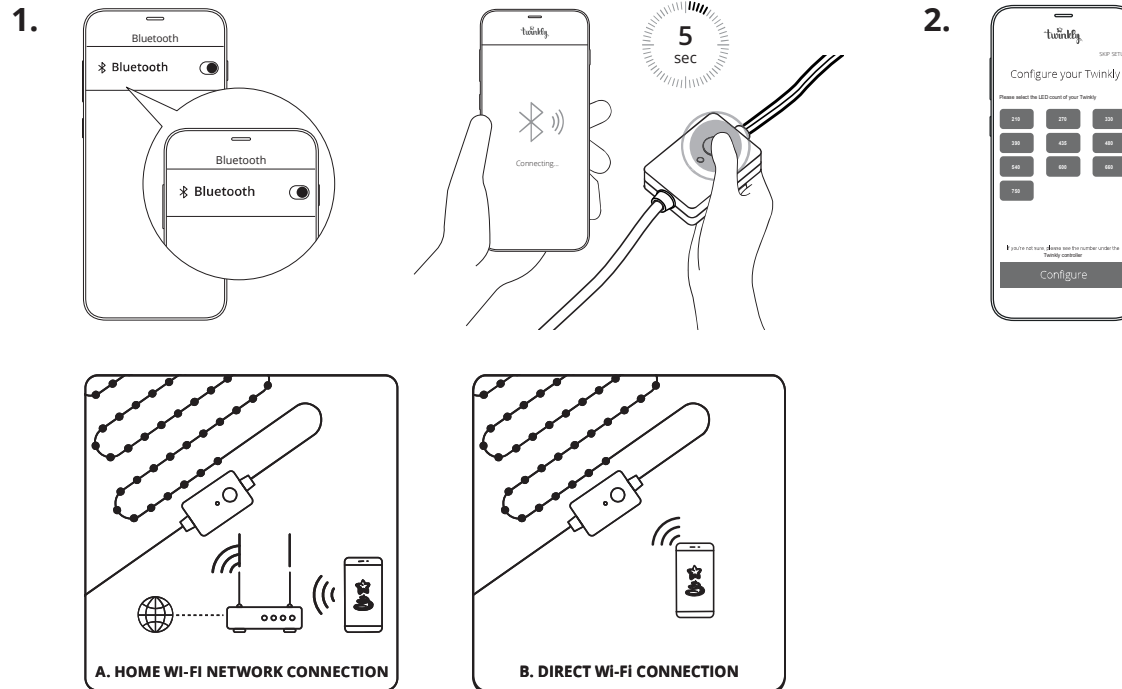
4.



1. Go to App Store/Google Play Store (or scan QR code).
2. Download and install the Twinkly app.
3. Launch Twinkly app.
4. Select **GENERATION II** controller for your tree. Follow the setup process on the app.

Note: All app illustrations in this document are a mere representation of the functionality and may vary from the actual app visuals.

connection modes



1. Twinkly uses Bluetooth for the setup process only. Wi-Fi connection is required for operation. You can use:

A. **Home Wi-Fi network connection (recommended):**

Connect with your home/office WiFi from the list of available networks.

B. **Direct Wi-Fi connection:**

Select "Twinkly_xxxxxx" WiFi from the list of available networks. Password:

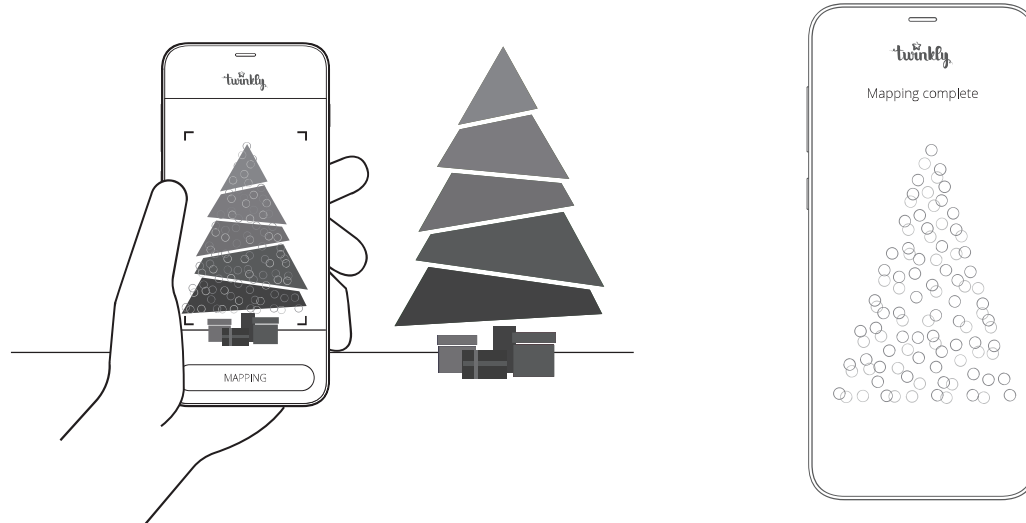
Twinkly2019

(NOTE: the internet on your phone will not be available in this case)

2. Select the correct light count of your tree and tap "Configure" to complete the connection to your Twinkly tree.

mapping

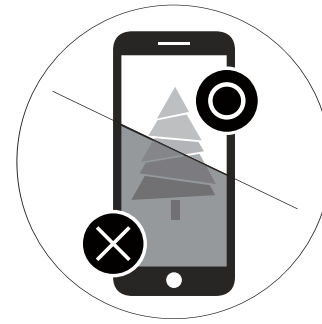
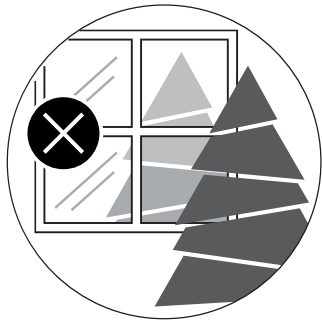
10



Map the layout of your decoration to unlock the full potential of your Twinkly tree like advanced effects, drawing and many upcoming features.

1. Frame the tree from a distance of 1.5-2.5 meters.
2. Open Layout and tap the "Map Lights" button. All LEDs will illuminate with different colors during the process.
3. Once the process is completed, return to the Effects Gallery to enjoy advanced preset and customizable effect.

mapping tips



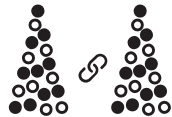
Note: For best results, avoid reflective surfaces behind the tree, keep the mobile camera steady during the process and ensure a moderate ambient light (not too dark).



Browse, play and edit effects



Create new effects



Group multiple devices together



Download new effects

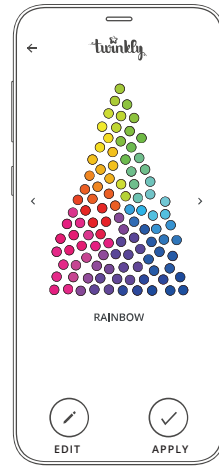


choose preset effects

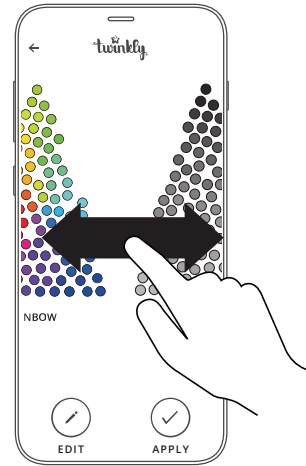
1.



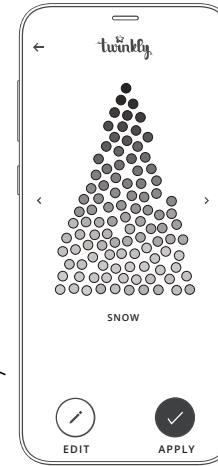
2.



3.



4.

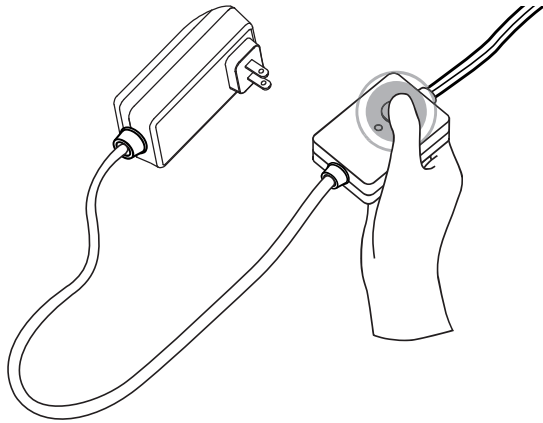


1. Open the Effects Gallery.
2. Select the desired effect to see the real-time preview on your Twinkly set-up.
3. Swipe left or right to browse effect.
4. Tap **"Apply"** to store the effect and play continuously.

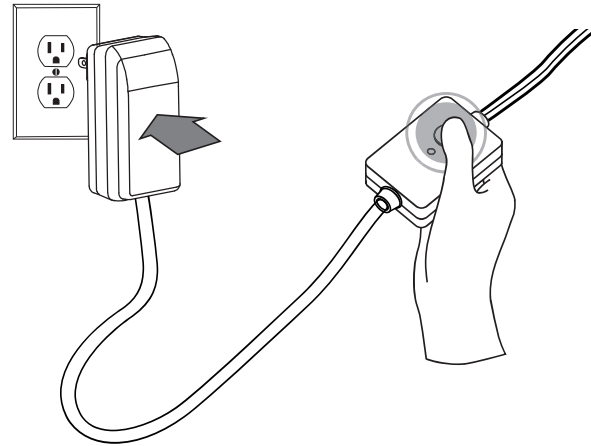
Note: App user interface may change due to technical updates and improvements.

reset twinkly

1.

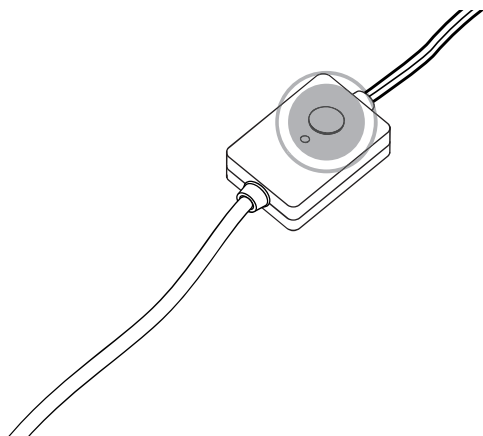


2.

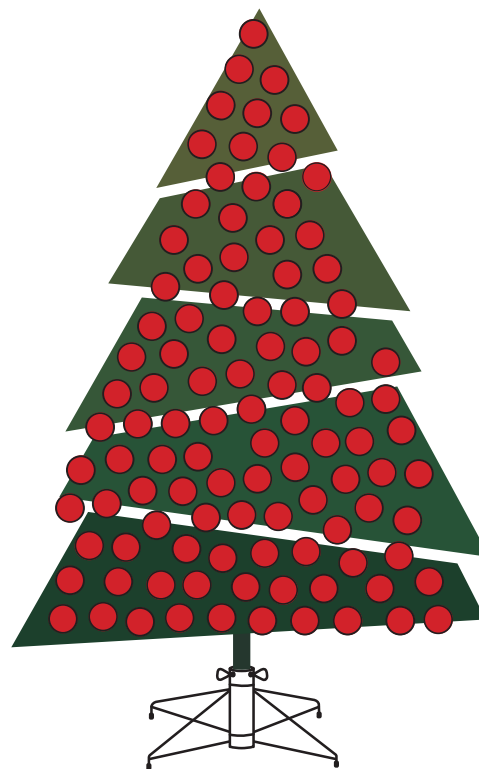


1. Unplug the Twinkly power adapter from the AC outlet. Press and hold the controller button.
2. While holding the button, plug in the Twinkly power adapter.
3. Keep holding the button until all LED lights on the tree turn red, then release the button.

3.



RED



FCC Caution:

Any Changes or modifications not expressly approved by the party responsible for compliance could void the user's authority to operate the equipment.

This device complies with part 15 of the FCC Rules. Operation is subject to the following two conditions: (1) This device may not cause harmful interference, and (2) this device must accept any interference received, including interference that may cause undesired operation.

IMPORTANT NOTE:

Note: This equipment has been tested and found to comply with the limits for a Class B digital device, pursuant to part 15 of the FCC Rules. These limits are designed to provide reasonable protection against harmful interference in a residential installation. This equipment generates, uses and can radiate radio frequency energy and, if not installed and used in accordance with the instructions, may cause harmful interference to radio communications. However, there is no guarantee that interference will not occur in a particular installation. If this equipment does cause harmful interference to radio or television reception, which can be determined by turning the equipment off and on, the user is encouraged to try to correct the interference by one or more of the following measures:

- Reorient or relocate the receiving antenna.
- Increase the separation between the equipment and receiver.
- Connect the equipment into an outlet on a circuit different from that to which the receiver is connected.
- Consult the dealer or an experienced radio/TV technician for help.

FCC Radiation Exposure Statement:

This equipment complies with FCC radiation exposure limits set forth for an uncontrolled environment.

This equipment should be installed and operated with minimum distance 20cm between the radiator& your body.

This device complies with Innovation, Science, and Economic Development Canada licence-exempt RSS standard(s). Operation is subject to the following two conditions:

- (1) this device may not cause interference, and
- (2) this device must accept any interference, including interference that may cause undesired operation of the device.

Le présent appareil est conforme aux CNR d'Innovation, Sciences et Développement économique Canada applicables aux appareils radio exempts de licence.

L'exploitation est autorisée aux deux conditions suivantes :

- (1) l'appareil ne doit pas produire de brouillage, et*
- (2) l'utilisateur de l'appareil doit accepter tout brouillage radioélectrique subi, même si le brouillage est susceptible d'en compromettre le fonctionnement.*

The device is compliance with RF exposure guidelines, users can obtain Canadian information on RF exposure and compliance. The minimum distance from body to use the device is 20cm.

Le présent appareil est conforme Après examen de ce matériel aux conformité ou aux limites d'intensité de champ RF, les utilisateurs peuvent sur l'exposition aux radiofréquences et la conformité and compliance d'acquérir les informations correspondantes. La distance minimale du corps à utiliser le dispositif est de 20cm.