

NEED HELP? DO NOT RETURN TO STORE.

CALL: 1-855-HDHoliday (1-855-434-6543)

Monday - Friday 8am to 7pm EST, Saturday 9am to 6pm EST

NOTE: DEMO MODE ACTIVATED

Please reference "Demo Mode Instructions" for more details.

Safety Information

IMPORTANT SAFETY INSTRUCTIONS

When using electrical products, basic precautions should always be followed, including the following:

- a. **READ AND FOLLOW ALL SAFETY INSTRUCTIONS.**
- b. Do not use seasonal products outdoors unless marked suitable for indoor and outdoor use. When products are used in outdoor applications, connect the product to a Ground Fault Circuit Interrupting (GFCI) outlet. If one is not provided, contact a qualified electrician for proper installation.
- c. This seasonal product is not intended for permanent installation or use.
- d. Do not mount or place the product near gas or electric heaters, fireplaces, candles, or other similar sources of heat.
- e. Do not secure the wiring of the product with staples or nails, or place on sharp hooks or nails.
- f. Do not let lamps rest on the supply cord or on any wire.
- g. Unplug the product when leaving the house, when retiring for the night, or if left unattended.
- h. This is an electric product and not a toy! To avoid risk of fire, burns, personal injury and electric shock it should not be played with or placed where small children can reach it.
- i. Do not use this product for other than its intended use.
- j. Do not hang ornaments or other objects from cord, wire, or light string.
- k. Do not close doors or windows on the product or extensions cords as this may damage the wire insulation.
- l. Do not cover the product with cloth, paper, or any material that is not a part of the product when in use.
- m. This product is equipped with push-in type lamps. Do not twist lamps.
- n. Read and follow all instructions that are on the product or provide with the product.

o. SAVE THESE INSTRUCTIONS

Pre-Assembly

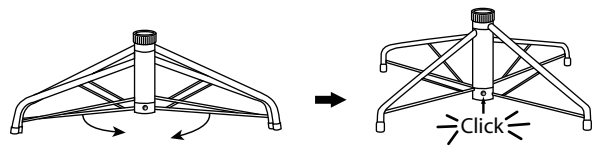
Package Contents

Part	Description	Quantity
A	Tree top	1
B	Tree center, Sticker 2	1
C	Tree bottom, Sticker 1	1
D	Tree stand	1
E	Remote Control	1

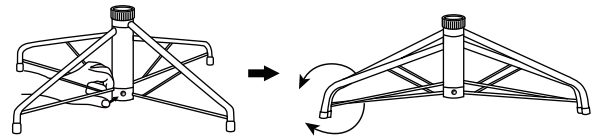
Assembly

Assembling the tree stand

Step 1. Pull apart the legs of the stand so that they are snapped into an x-shape, place the tree stand on a level surface.



To close the stand, press the metal button and fold the legs together.



Assembling the tree

This tree assembles with Quick Set® feature

---Set up and light up your tree in less than 10 minutes!

Step 1. Remove the protective caps from the tree bottom and insert the pole into the tree stand.

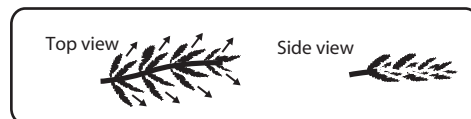
Note: Do not step on the tree stand legs during the setup. This may deform the tree stand and may result in an unbalanced tree.

Step 2. Continue by inserting the upper tree section(s) to the lower section(s) until inserting the tree top.

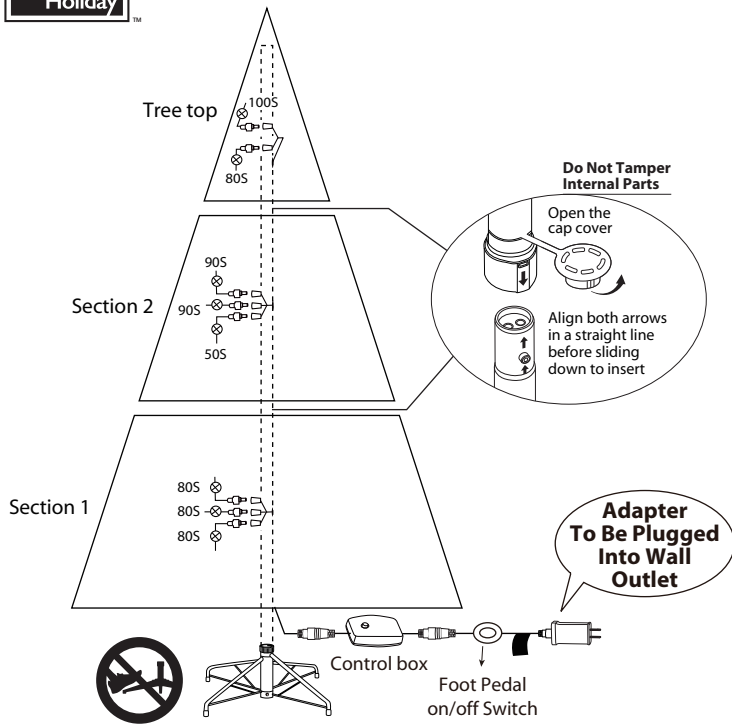
Step 3. Shape the branches to your preference by working from the bottom to the top. When adjusting branches, ensure that all wires are free of branch hinges.

Step 4. Insert the adapter into the wall outlet. All your lights should now be lit.

Step 5. Shape the tree from the bottom to the top. Start with the branches farthest from the pole – fan out in a star shape, and continue until the entire tree is shaped.

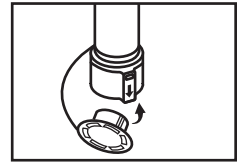


Step 6. When finished shaping the branches, slightly upsweep all branch tips for a uniform look.



Use and Care Instructions

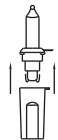
1. Before using or reusing, inspect product carefully. Discard any products that have cut, damaged or frayed wire insulation or cords, cracks in the lampholders or enclosures, loose connections, or exposed copper wire.
2. Before disassembling the tree, unplug the tree and remove all ornaments and decorations.
3. Gently lift the tree top straight up to remove from the center section and fold all branches towards the pole.
4. Repeat this step for the center and bottom tree sections.
5. When storing the product, carefully remove the product from wherever it is placed, including tree, branches, or bushes, to avoid any undue strain or stress on the product conductors, connections, and wires. Cover the protective cap on the poles to avoid damaging the internal parts.
6. When not in use, store neatly in a cool, dry location protected from sunlight.



LAMP REPLACEMENT

Step 1. Grasp the power adapter or power cord plug, and than unplug from the power outlet. Do not pull the power cord.

Step 2. Lift up lamp lock tab, then pull the lamp and plastic lamp base straight out of the lamp-holder.



Step 3. Replace with a new spare lamp provided with this product.



(Reference figure only)

Operation

Turning on the tree

NOTE: If some bulbs do not light or flicker, search for any loose plugs and/or broken, loose, or missing bulbs. Replace bulbs promptly with the replacement bulbs provided in order to maintain the performance and life expectancy of your tree.

Step 1. Connect the light strings of the tree together and plug the adapter into a wall outlet.

Step 2. If the tree comes with a foot pedal, step on the On/Off button.

Maintenance

Spare parts

This tree package includes hinge pins, washers and bulbs for any replacement or repair that you need to perform on your tree. If extra parts are needed, contact the Customer Service Team at 1-855-HDHoliday (1-855-434-6543) from 8am to 7pm EST, Monday through Friday, and 9am to 6pm EST, Saturday.

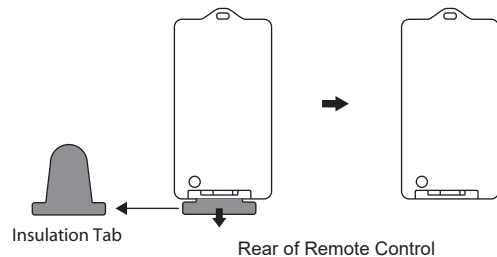
Repairing Loose Hinges

Step 1. Place the branch into the slot of the bracket

Step 2. Insert a new hinge pin through the holes of the bracket and secure with a washer.

Remote Control Instructions

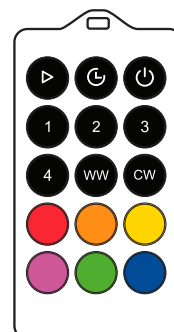
1. Remove the insulation tab of the remote control.
2. **This tree is preset to Demo mode.** Before selecting other light functions, the Demo mode has to be deactivated. Follow the steps "**To deactivate the Demo mode**" under **Demo Mode Instructions** to do so.



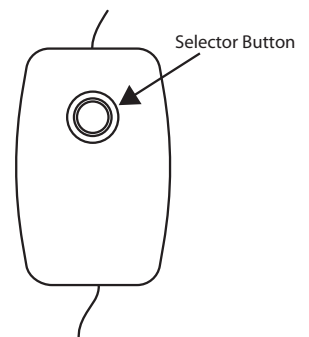
DUAL COLOR LIGHT CONTROLLER & REMOTE CONTROL

Choose the light effect by pressing the corresponding button. You can also press the Selector button of the in-line light controller to enjoy light effects in the following sequence:

- Warm White & Multicolor Fading
- Warm White Fading
- Warm White & Multicolor Alternating
- Warm White Steady
- Warm White & Multicolor Slow Fading
- Multicolor Steady
- Multicolor Fading
- Combination of Light Functions 1-2
- Combination of Light Functions 1-3
- Combination of Light Functions 1-4
- Combination of Light Functions 1-5
- Combination of Light Functions 1-6
- Combination of Light Functions 1-7



Remote Controller

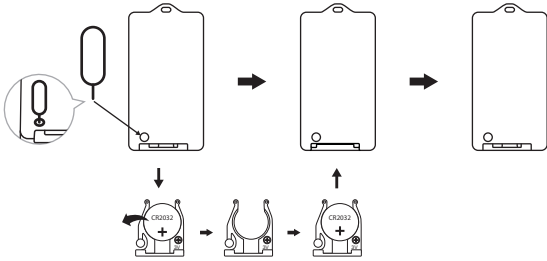


Light Controller



BATTERY REPLACEMENT

1. Locate the push button near the battery tray at the rear.
2. Using a pin or similar object with a fine tip, press and hold down on the button while pulling on the battery tray to disconnect the tray from the remote controller.
3. Remove the pin and continue to pull the battery tray out completely.
4. Replace the old battery with a new one (Battery type: CR2032). Be sure the new battery is installed with the correct polarity (+ and -).
5. Push the battery tray back into the remote controller.



⚠ WARNING

1. Dispose used battery properly. Observe local regulations regarding disposal of hazardous waste.
2. Ensure the batteries are installed correctly with regard to polarity (+ and -).
3. This product is powered by a lithium battery. Due to their small size, lithium batteries can easily be swallowed by children. Ingestion of such batteries has been known to cause death.
4. This product contains a lithium battery which if swallowed has been known to cause death.
5. Do not expose light set to moisture.
6. Remove batteries when not used for an extended period of time, or when depleted.
7. Clean the battery contacts prior to battery installation.
8. The external flexible cable or cord of this luminaire cannot be replaced; If the cord is damaged, the luminaire shall be destroyed.
9. Dispose of used batteries properly by following directions on batteries.
10. Use only CR2032 batteries for the remote controller.
11. DO NOT DISPOSE OF BATTERIES IN FIRE. BATTERIES MAY EXPLODE OR LEAK.

Demo Mode Instructions

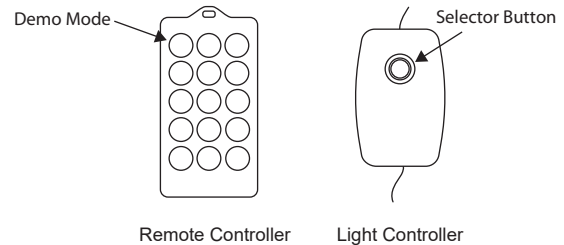
This tree is preset to Demo Mode.

To deactivate the DEMO mode:

1. With the tree plugged in and in DEMO mode, press the Demo Mode button of the remote control or press and hold the Selector button of the in-line light controller for **5 seconds**.
2. The multi-light will flash 5 times indicating that DEMO mode is off.
3. The tree is now in normal mode. Flashing pattern can be set to desired function and tree will remember the last setting until new setting is selected.

To activate the DEMO mode:

1. With the tree plugged in, press the Demo Mode button of the remote control or press and hold the Selector button of the in-line light controller for **5 seconds**.
2. The Clear Lights will blink 3 times. The tree is now in DEMO mode.
3. Within DEMO mode, the tree will display the COMBO pattern at all times unless the function button is pressed to change the flashing pattern. The tree will return to COMBO pattern whenever the controller is idle for 30 seconds.



CAUTION:

1. To reduce the risk of fire and electric shock:
 - a) Use only the power supply that was provided with this product. Using a different adapter will damage the lights and may cause fire, or electrical shock hazards.
 - b) Do not install on trees having needles, leaves or branch coverings of metal or materials which look like metal.
 - c) Do not mount or support strings in a manner that can cut or damage wire insulation.
2. The controller and remote controller (if included) can only be used with this product.

Troubleshooting

Problem	Solution
The tree does not light	Ensure that all tree sections are plugged into each other and that the tree is plugged into the wall. If your tree came with a foot pedal, step on the On/Off button.
	Check for loose, broken, or missing bulbs and replace as needed with the replacement bulbs provided

<p>Section Out? Ensure pole is fully connected</p>	<p>No Lights Working? Check For Loose Connection</p>	<p>Not Full? Spread Branches</p>
<p>Tree Topper?</p> <p>Run Extension Cord</p>	<p>Branch Hanging Low?</p> <p>Bend up</p>	<p>Lights Cycle Through Functions? This tree is preset to Demo Mode.</p> <p>To deactivate: Press the DEMO button once. Multicolor lights will blink 5 times.</p> <p>To activate: Press the DEMO button once. Warm White lights will blink 3 times.</p>

Other Issue? Call 1-855-HDHoliday (1-855-434-6543)

Any Changes or modifications not expressly approved by the party responsible for compliance could void the user's authority to operate the equipment.

This device complies with part 15 of the FCC Rules. Operation is subject to the following two conditions: (1) This device may not cause harmful interference, and (2) this device must accept any interference received, including interference that may cause undesired operation.

Note: This equipment has been tested and found to comply with the limits for a Class B digital device, pursuant to part 15 of the FCC Rules. These limits are designed to provide reasonable protection against harmful interference in a residential installation. This equipment generates, uses and can radiate radio frequency energy and, if not installed and used in accordance with the instructions, may cause harmful interference to radio communications. However, there is no guarantee that interference will not occur in a particular installation. If this equipment does cause harmful interference to radio or television reception, which can be determined by turning the equipment off and on, the user is encouraged to try to correct the interference by one or more of the following measures:

- Reorient or relocate the receiving antenna.
- Increase the separation between the equipment and receiver.
- Connect the equipment into an outlet on a circuit different from that to which the receiver is connected.
- Consult the dealer or an experienced radio/TV technician for help.

This device complies with Innovation, Science, and Economic Development Canada licence-exempt RSS standard(s). Operation is subject to the following two conditions: (1) this device may not cause interference, and (2) this device must accept any interference, including interference that may cause undesired operation of the device.

Le présent appareil est conforme aux CNR d'Innovation, Sciences et Développement économique Canada applicables aux appareils radio exempts de licence. L'exploitation est autorisée aux deux conditions suivantes :

- (1) l'appareil ne doit pas produire de brouillage, et*
- (2) l'utilisateur de l'appareil doit accepter tout brouillage radioélectrique subi, même si le brouillage est susceptible d'en compromettre le fonctionnement.*

This equipment complies with FCC/ISED radiation exposure limits set forth for an uncontrolled environment.

L'appareil est conforme aux limites d'exposition aux rayonnements spécifiées par la FCC/ISED pour les environnements non contrôlés.