

NEED HELP?

DO NOT RETURN TO STORE. PLEASE VISIT US AT:
polygroupstore.com OR (888) 919-0070



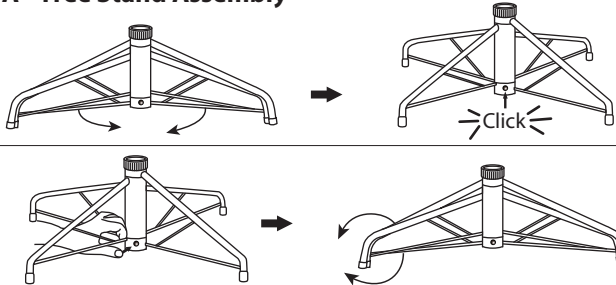
TREE ASSEMBLY INSTRUCTIONS

Congratulations on purchasing your new tree from **Polygroup®!**

This tree comes with Quick Set® feature - allowing you to set up and light your tree easily!
Carefully follow the instructions below on how to quickly and easily set up your new tree.

1. Before you start to assemble your tree, choose an appropriate location near a wall outlet.
2. Assemble the tree stand and place on a level surface. (See Fig. A)

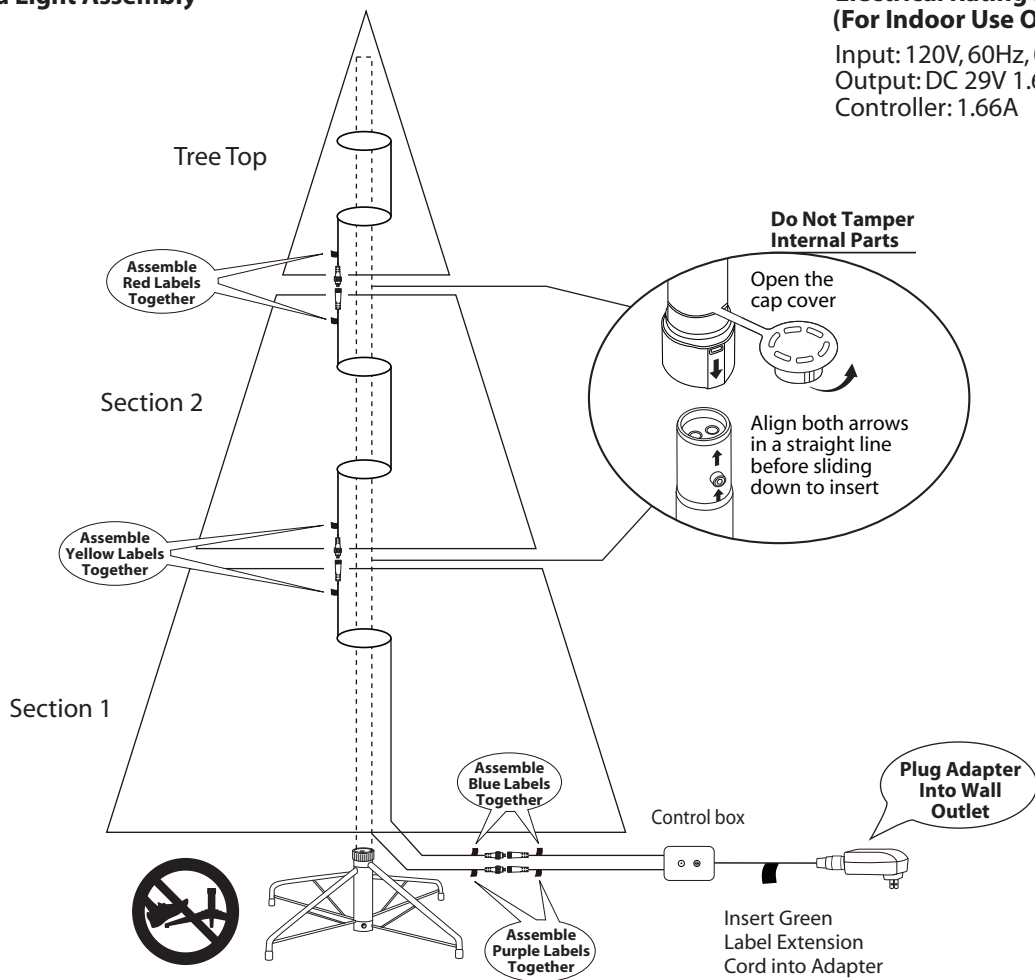
Fig. A - Tree Stand Assembly



Pull apart the legs of the stand so that they are snapped into an x-shape, place the tree stand on a level surface.

To close the stand, press the metal button and fold the legs together.

Fig. B - Tree and Light Assembly



Electrical Rating For The Tree (For Indoor Use Only)

Input: 120V, 60Hz, 0.83A
Output: DC 29V 1.66A
Controller: 1.66A

Do Not Tamper Internal Parts

Open the
cap cover

Align both arrows
in a straight line
before sliding
down to insert

3. Each tree section is numbered with a sticker. Please identify all sections before assembling.

4. Assemble the tree from the bottom to the top. Start with the bottom section and remove protective cap before inserting into the assembled stand. Make sure the pole is firmly inserted and secured into the stand.

Note: Do not step on the tree legs during the setup. This may deform the tree stand and may result in an unbalanced tree.

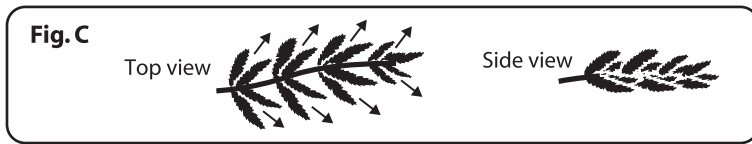
5. Continue by inserting the upper tree section(s) to the lower section(s) until inserting the tree top.

6. Allow branches to fall into place or gently pull up and out. When adjusting branches, be sure that all wires are free of branch hinges.

7. Just plug the adapter (connecting with the tree power cord) into the wall outlet (See Fig. B), your entire tree should now be lit.

If some bulbs do not light or flickers, search for any loose plugs and/or broken, loose or missing bulbs. Replace bulbs promptly in order to maintain the performance and life expectancy of your pre-lit tree.

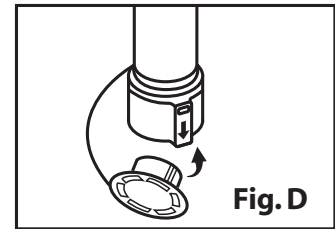
8. Begin to shape the branches and tips working from the bottom to the top. Start with tips farthest from the pole and fan out one to the right, one to the left and one at the center of the main stem. (see Fig. C)



9. After shaping the entire tree following the previous step, slightly upweep all branch tips for a uniform look. Shift branches to fill any gaps. Your Christmas tree is now complete and ready to be decorated.

STORAGE INSTRUCTIONS

1. Unplug adapter from the wall outlet first and then remove all ornaments and decorations.
2. Disassemble the tree from the top to the bottom. Start with the tree top and gently lift straight up to remove from section below and fold all branches toward the pole.
3. Continue by gently lifting straight up each section(s) from the section below and fold all branches toward the pole until the bottom section is removed from the tree stand. Cover the protective cap on the poles to avoid damaging the internal parts. (See Fig. D)
4. Carefully place all tree sections into shipping box and tape it shut.
5. When not in use, please store your tree in a cool, dry place away from sunlight. Exposing your tree to excessive heat or humidity may damage your tree.



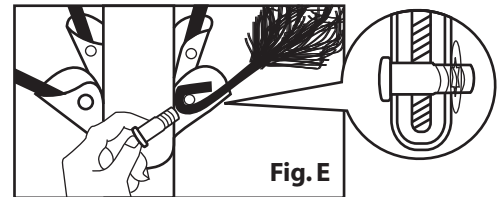
TROUBLESHOOTING TIPS

For Pre-lit Trees, If The Tree Does Not Illuminate

1. Please check to make sure that all plugs are properly connected and adapter is plugged into the wall outlet.
2. Turning the poles gently to make sure pole to pole are connected into place.
3. Check for loose connection between light string plugs and extension cords.
4. Please check for loose, broken or missing light bulbs and replace as needed.

Loose Hinge Pin

1. Extra hinge pins are included for repairing the hinges.
Place the branch into the slot of the bracket.
2. Insert a new hinge pin through the hole and secure using the retainer washer. (See Fig. E)



CAUTION:

1. To reduce the risk of fire and electric shock:
 - a) Use only the power supply that was provided with this product. Using a different adapter will damage the lights and may cause fire, or electrical shock hazards.
 - b) Do not install on trees having needles, leaves or branch covering of metal or materials which look like metal.
 - c) Do not mount or support strings in a manner that can cut or damage wire insulation.
2. The controller and remote controller (if included) can only be used with this product.

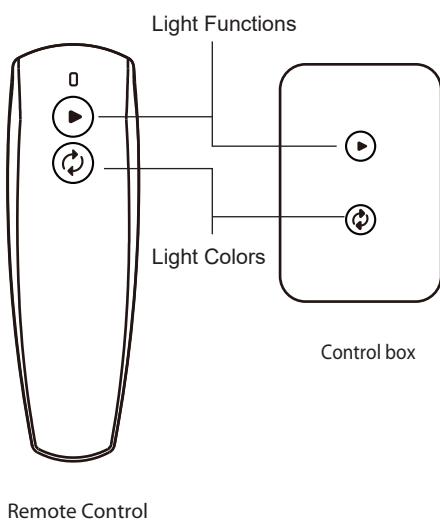
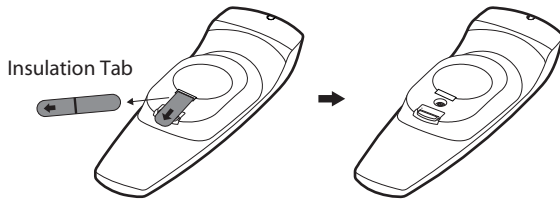
SPARE PARTS

Each tree includes hinge pins/washers, and for pre-lit trees spare bulbs are also included. If extra parts are needed, please contact our customer service center.

REMOTE CONTROL INSTRUCTIONS

You can customize the light functions by using either the Light Controller or the Remote Control.

1. Before using the Remote Control, remove the insulation tab on its rear.
2. Press the Selector Button once on either control to enjoy light effects in the pre-programmed sequence.



Light Functions

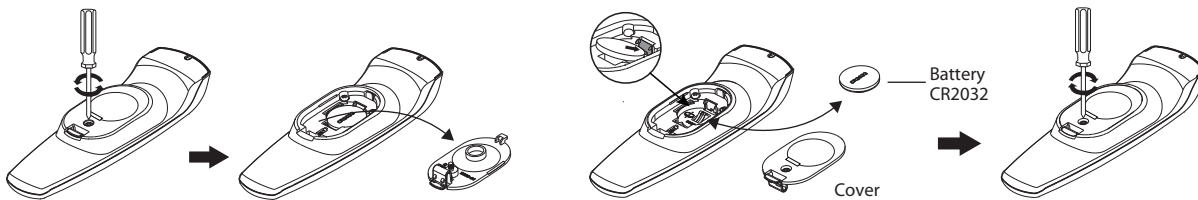
- Steady Glow
- Blinking
- Fading
- OFF

Light Colors

- Warm White
- Cool White
- Red
- Green
- Blue
- Yellow
- Cyan
- Purple

Battery Replacement of Remote Control

1. Loosen the screw of the battery cover with a screwdriver (not included).
2. Replace the used battery with a new CR2032 button cell battery (not included). Make sure that the battery is installed with the correct polarity (+ and -).
3. Retighten the screw to close and secure the battery cover.



⚠ WARNING

1. This product is powered by a lithium battery. Due to their small size, lithium batteries can easily be swallowed by children. Ingestion of such batteries has been known to cause death.
2. Small parts, keep batteries out of reach of children.
3. Do not expose the remote controller to moisture.
4. Dispose of used batteries properly (by following directions on batteries), and local laws and regulations regarding the disposal of hazardous waste.
5. Clean the battery contact surfaces prior to battery installation.
6. This product contains a lithium button/coin cell battery. If a new or used lithium button/coin cell battery is swallowed or enters the body, it can cause severe internal burns and can lead to death in as little as 2 hours. Always completely secure the battery compartment. If the battery compartment does not close securely, stop using the product, remove the batteries, and keep it away from children. If you think batteries might have been swallowed or placed inside any part of the body, seek immediate medical attention.
7. Remove batteries when not used for an extended period of time, or when depleted.
8. Use only CR2032 button cell battery for remote controller.
9. Do not dispose of batteries in fire – Batteries may explode or leak.
10. Non-rechargeable batteries are not to be recharged.
11. Batteries are to be inserted with the correct polarity.
12. Chemical Burn Hazard. Keep batteries away from children.
13. Ensure the ladder is securely fixed and is not slippery. Be cautious when climbing up and down the ladder.



Be cautious when using ladder to set up tall trees

CUSTOMER SERVICE FOR CHRISTMAS TREES

For any questions, assistance, or missing parts, DO NOT RETURN TO PLACE OF PURCHASE. Contact us at **(888) 919-0070** or visit our website at **www.polygroupstore.com**. One of our customer service representatives will be happy to assist you.

Tree ID#: _____

Customer Name: _____

Tree UPC#: _____

Address: (No P.O. Boxes) _____

Store Purchased: _____

City & State: _____

Specify Problem: _____

Zip Code: _____

Day Phone: _____

Date Purchased: _____

TREE ID# IS LOCATED ON END PANEL OF BOX. TREE ID# IS REQUIRED WHEN REQUESTING REPLACEMENT PARTS.

Any Changes or modifications not expressly approved by the party responsible for compliance could void the user's authority to operate the equipment.

This device complies with part 15 of the FCC Rules. Operation is subject to the following two conditions:

(1) This device may not cause harmful interference, and (2) this device must accept any interference received, including interference that may cause undesired operation.

Note: This equipment has been tested and found to comply with the limits for a Class B digital device, pursuant to part 15 of the FCC Rules. These limits are designed to provide reasonable protection against harmful interference in a residential installation. This equipment generates, uses and can radiate radio frequency energy and, if not installed and used in accordance with the instructions, may cause harmful interference to radio communications. However, there is no guarantee that interference will not occur in a particular installation. If this equipment does cause harmful interference to radio or television reception, which can be determined by turning the equipment off and on, the user is encouraged to try to correct the interference by one or more of the following measures:

- Reorient or relocate the receiving antenna.
- Increase the separation between the equipment and receiver.
- Connect the equipment into an outlet on a circuit different from that to which the receiver is connected.
- Consult the dealer or an experienced radio/TV technician for help.

This device complies with Innovation, Science, and Economic Development Canada licence-exempt RSS standard(s). Operation is subject to the following two conditions:

(1) this device may not cause interference, and

(2) this device must accept any interference, including interference that may cause undesired operation of the device.

Le présent appareil est conforme aux CNR d' Innovation, Sciences et Développement économique Canada applicables aux appareils radio exempts de licence. L'exploitation est autorisée aux deux conditions suivantes :

(1) l'appareil n' doit pas produire de brouillage, et

(2) l'utilisateur de l'appareil doit accepter tout brouillage radioélectrique subi, même si le brouillage est susceptible d'en compromettre le fonctionnement.

This equipment complies with FCC/ISED radiation exposure limits set forth for an uncontrolled environment.

L'appareil est conforme aux limites d'exposition aux rayonnements spécifiées par la FCC/ISED pour les environnements non contrôlés.