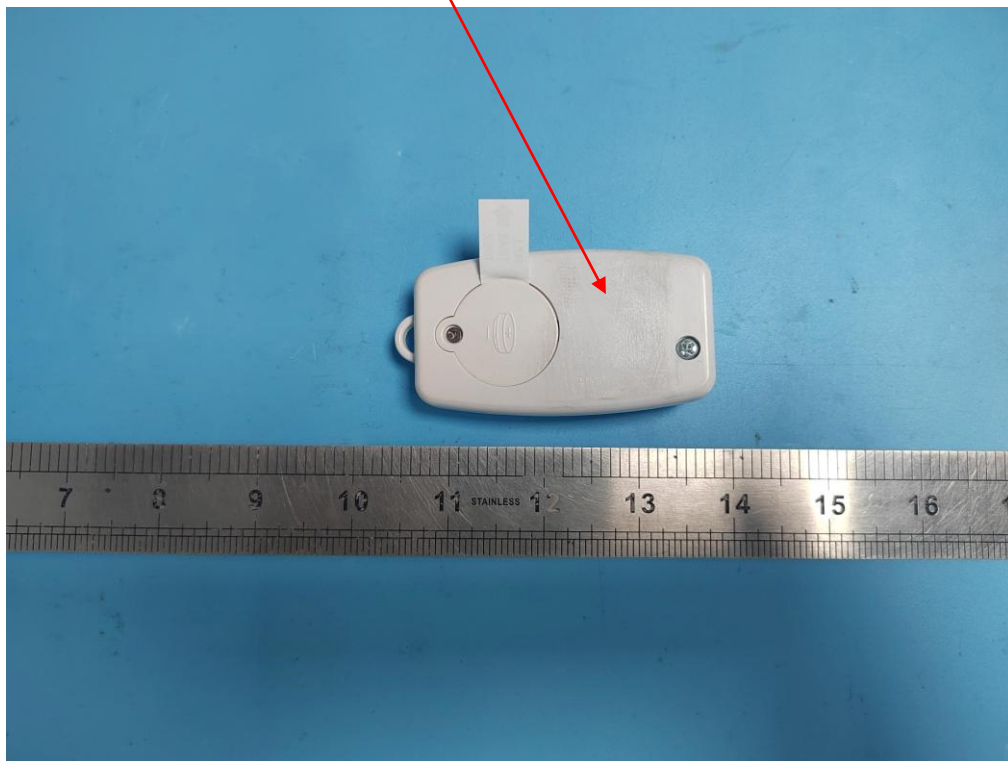


**FCC ID Label**

**PDT-002-29V**  
**BATTERY/BATTERIE/BATERÍA**  
**CR2032 3V**

MADE IN CHINA      FCC ID: 2A62C-CW002  
FABRIQUÉ EN CHINE IC: 28592-ICPDT00229V  
HECHO EN CHINA

**FCC ID Label Location Information**



The label shown shall be permanently affixed at a conspicuous location on the device and be readily visible to the user at the time purchase (Labeling requirements per 2.925)