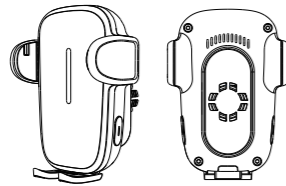


VASIVO

User Manual

Cell Phone Holder with Wireless Car Charger Pad

Model No. iFORCE W2



Use camera or QR scanner to scan
Or Visit: <https://vasivo.afterservice.vip>

Before Use

Thank you for purchasing our product! It is a smart wireless charging product with intelligent identification and induction shrink function, whose holder will support auto-matching of transmitting and receiving coils between the cell phone and the charger. With it, you can easily experience the wireless fun of smart digital products. Please read this manual carefully before using the product and keep it properly for reference.

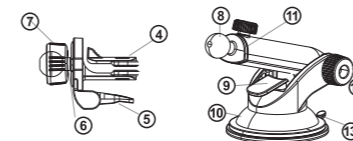
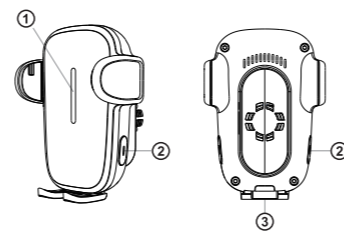
Safety Precautions

1. Please place the product out of the reach of children.
2. **Do not** use it in a humid environment.
3. **Do not** disassemble the product.
4. Please avoid beating or striking the product.
5. **Do not** attend to repair the product by yourself.
6. This product is built with a gear control inside. Please **do not** force the holder to open or retract.
7. Please note that this product needs to be

used with the car chargers certified by QC2.0/QC3.0.

8. It adopts the working principals of the wireless charging and capacitive sensing, namely, charging once touch.
9. For the phones that will use this product, there should not be a ring clasp at the back of the phones, which is made of metal and will increase the thickness of the cell phones. With a ring clasp, it will affect the normal use of the product and charging efficiency.

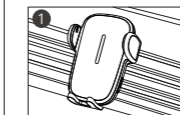
Product Overview



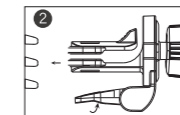
- ① Movable Sensor Area/Indicator Light
- ② Side Button
- ③ Type-C Charging Port
- ④ Air Vent Clip
- ⑤ Air Vent Clip Fixing Buckle
- ⑥ Multi-angle Rotating Ball
- ⑦ Multi-angle Rotating Ball Fixing Nut
- ⑧ Plastic Connector
- ⑨ Suction Cup Fixing Buckle
- ⑩ Height-adjustable Structure
- ⑪ Length-adjustable Bar
- ⑫ Viewing Angle Adjustable Knob
- ⑬ PVC Suction Cup

Installation Instructions

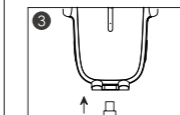
▶▶▶ 1. Cell Phone Holder With the Air Vent Clip



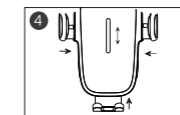
Rotate to release the air vent clip fixing nut. Use the clip to grip the bottom leaf of the air vent.



Rotate to fix the air vent clip fixing nut.



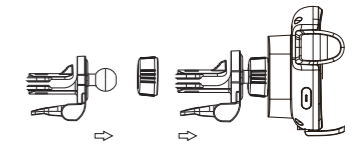
Adjust the phone holder and insert the Type-C cable into the charging port. The indicator will light up, and the holder will automatically open wide.



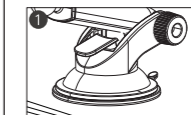
Place the cell phone on the holder and it will be gripped firmly. The holder will automatically detect the phone's wireless charging position and move to the correct position.

▶▶▶ 2. Assembling the Air Vent Clip

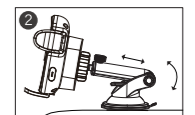
- ① First assemble the fixing nut on the rotating ball to finish the air vent clip part.
- ② Assemble the air vent clip part on the back of the phone holder.
- ③ Then twist the fixing nut to tighten it as needed.



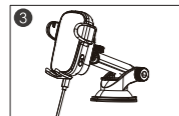
▶▶▶ 3. Cell Phone Holder With the Suction Cup



Place the suction cup on the gasket, and press the suction cup to make it fix firmly.



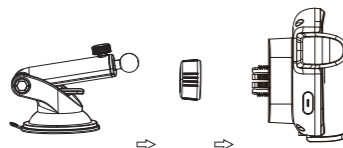
Adjust the viewing angle adjustable knob and length-adjustable bar to make it the best viewing angle and length.



Insert the Type-C cable into the charging port and it is ready to work.

▶▶▶ 4. Assembling the Suction Cup

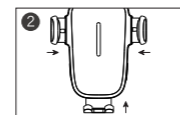
- ① First assemble the fixing nut on the rotating ball of the suction cup to finish the suction cup part.
- ② Assemble the suction cup part on the back of the phone holder.
- ③ Then twist the fixing nut to tighten it as needed.



▶▶▶ 5. Taking out the Phone



When the user needs to take out the phone, press any side button to make the holder open wide.



The holder will record the wireless charging position. There is no need to detect the position next time when the phone is placed. It will start charging once touch and the holder will grip it at the same time.

Product Specifications

Product Name	Cell Phone Holder with Wireless Car Charger Pad
Model	iFORCE W2
Product Size	4*2.9*2.9 inches (104*74*74 mm)
Product Weight	About 165g of a bare phone clamp; About 175g with a air vent clip; About 245g with a suction cup.
Power Input	5.0V; 9.0V; 12.0V/2.0A (MAX)
Power Output	5.0V; 9.0V; 12.0V/1-1.5A (MAX)
Rated Power	5W; 7.5W; 10W; 15W(MAX)
Sensing Distance	2-8mm

FCC Requirement

Any changes or modifications not expressly approved by the party responsible for compliance could void the user's authority to operate the equipment. This device complies with Part 15 of the FCC Rules. Operation is subject to the following two conditions: (1) this device may not cause harmful interference, and (2) this device must accept any interference received, including interference that may cause undesired operation.

Note: This equipment has been tested and found to comply with the limits for a Class B digital device, pursuant to Part 15 of the FCC Rules. These limits are designed to provide reasonable protection against harmful interference in a residential installation. This equipment generates, uses, and can radiate radio frequency energy, and if not installed and used in accordance with the instructions, may cause harmful interference to radio communications. However, there is no guarantee that interference will not occur in a particular installation. If this equipment does cause harmful interference to radio or television reception, which can be determined by turning the equipment off and on, the user is encouraged to try to correct the interference by one or more of the following measures:

- Reorient or relocate the receiving antenna.
- Increase the separation between the equipment and receiver.
- Connect the equipment into an outlet on a circuit different from that to which the receiver is connected.
- Consult the dealer or an experienced radio/TV technician for

VASIVO

Get 24/7 Assistance at



Use camera or QR scanner to scan
Or Visit: <https://vasivo.afterservice.vip>