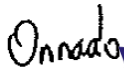




TEST REPORT

FCC ID..... :	2A5Z8-J811LM	
Test Report No..... :	TCT240311E009	
Date of issue..... :	Apr. 07, 2024	
Testing laboratory	SHENZHEN TONGCE TESTING LAB	
Testing location/ address:	2101 & 2201, Zhenchang Factory, Renshan Industrial Zone, Fuhai Subdistrict, Bao'an District, Shenzhen, Guangdong, 518103, People's Republic of China	
Applicant's name..... :	Shenzhen Jos Technology Co., Ltd.	
Address..... :	201, Building B, No. 213 Fuyuan Street, Fenghuang Community, Fuyong Street, Bao'an District, Shenzhen, China	
Manufacturer's name ... :	Shenzhen Jos Technology Co., Ltd.	
Address..... :	201, Building B, No. 213 Fuyuan Street, Fenghuang Community, Fuyong Street, Bao'an District, Shenzhen, China	
Standard(s)	FCC CFR Title 47 Part 15 Subpart C Section 15.231	
Product Name..... :	GARAGE DOOR REMOTE CONTROL	
Trade Mark	N/A	
Model/Type reference..... :	J-811LM, J-811LM-701, J-811LM-702, J-811LM-703, J-811LM-704, J-811LM-705, J-811LMX, J-811LMX-701, J-811LMX-702, J-811LMX-703, J-811LMX-704, J-811LMX-705	
Rating(s)..... :	DC 3V	
Date of receipt of test item	Mar. 11, 2024	
Date (s) of performance of test..... :	Mar. 11, 2024 ~ Apr. 07, 2024	
Tested by (+signature) ... :	Onnado YE	
Check by (+signature)..... :	Beryl ZHAO	
Approved by (+signature):	Tomsin	

**General disclaimer:**

This report shall not be reproduced except in full, without the written approval of SHENZHEN TONGCE TESTING LAB. This document may be altered or revised by SHENZHEN TONGCE TESTING LAB personnel only, and shall be noted in the revision section of the document. The test results in the report only apply to the tested sample.

Table of Contents

1. General Product Information	3
1.1. EUT description	3
1.2. Model(s) list.....	3
2. Test Result Summary	4
3. General Information.....	5
3.1. Test Environment and Mode.....	5
3.2. Description of Support Units.....	6
4. Facilities and Accreditations	7
4.1. Facilities	7
4.2. Location	7
4.3. Measurement Uncertainty.....	7
5. Test Results and Measurement Data	8
5.1. Antenna Requirement	8
5.2. Conducted Emission.....	9
5.3. Radiated Emission Measurement	10
5.4. Manually Activated Transmitter	22
5.5. Occupied Bandwidth.....	25
Appendix A: Photographs of Test Setup	
Appendix B: Photographs of EUT	

1. General Product Information

1.1. EUT description

Product Name.....:	GARAGE DOOR REMOTE CONTROL
Model/Type reference.....:	J-811LM
Sample Number.....:	TCT240311E009-0101
Operation Frequency	310MHz, 315MHz, 390MHz
Modulation Technology	FSK
Antenna Type.....:	PCB Antenna
Antenna Gain.....:	0dBi
Rating(s).....:	DC 3V

Note: The antenna gain listed in this report is provided by applicant, and the test laboratory is not responsible for this parameter.

1.2. Model(s) list

No.	Model No.	Tested with
1	J-811LM	<input checked="" type="checkbox"/>
Other models	J-811LM-701, J-811LM-702, J-811LM-703, J-811LM-704, J-811LM-705, J-811LMX, J-811LMX-701, J-811LMX-702, J-811LMX-703, J-811LMX-704, J-811LMX-705	<input type="checkbox"/>

Note: J-811LM is tested model, other models are derivative models. The models are identical in circuit and PCB layout, only different on the model names. So the test data of J-811LM can represent the remaining models.

2. Test Result Summary

Requirement	CFR 47 Section	Result
Antenna Requirement	§15.203/§15.247 (c)	PASS
Conduction Emission, 0.15MHz to 30MHz	§15.207	N/A
Manually Activated Transmitter	§15.231(a)	PASS
Radiation Emission	§15.231(b), §15.205, §15.209, §15.35	PASS
Occupied Bandwidth	§15.231(c)	PASS

Note:

1. PASS: Test item meets the requirement.
2. Fail: Test item does not meet the requirement.
3. N/A: Test case does not apply to the test object.
4. The test result judgment is decided by the limit of test standard.

3. General Information

3.1. Test Environment and Mode

Operating Environment:	
Condition	Radiated Emission
Temperature:	23.7 °C
Humidity:	54 % RH
Test Mode:	
Operation mode:	Keep the EUT in (310MHz, 315MHz, 390MHz) transmitting with modulation.
Remark:	All frequencies (310MHz, 315MHz, 390MHz) work only simultaneously.
<p>The sample was placed (0.8m below 1GHz, 1.5m above 1GHz) above the ground plane of 3m chamber. Measurements in both horizontal and vertical polarities were performed. During the test, each emission was maximized by: having the EUT continuously working, investigated all operating modes, rotated about all 3 axis (X, Y & Z) and considered typical configuration to obtain worst position, manipulating interconnecting cables, rotating the turntable, varying antenna height from 1m to 4m in both horizontal and vertical polarizations. The emissions worst-case (Y axis) are shown in Test Results of the following pages.</p>	

Per-test mode.

We have verified the construction and function in typical operation, The EUT was placed on three different polar directions; i.e. X axis, Y axis, Z axis. which was shown in this test report and defined as follows:

Axis	X	Y	Z
Field Strength(dBuV/m)	52.47	55.31	52.59

Final Test Mode:

According to ANSI C63.10 standards, the test results are both the "worst case" and "worst setup":
Y axis (see the test setup photo)

3.2. Description of Support Units

The EUT has been tested as an independent unit together with other necessary accessories or support units. The following support units or accessories were used to form a representative test configuration during the tests.

Equipment	Model No.	Serial No.	FCC ID	Trade Name
/	/	/	/	/

Note:

1. All the equipment/cables were placed in the worst-case configuration to maximize the emission during the test.
2. Grounding was established in accordance with the manufacturer's requirements and conditions for the intended use.

4. Facilities and Accreditations

4.1. Facilities

The test facility is recognized, certified, or accredited by the following organizations:

- FCC - Registration No.: 645098

SHENZHEN TONGCE TESTING LAB.

Designation Number: CN1205

The testing lab has been registered and fully described in a report with the (FCC) Federal Communications Commission. The acceptance letter from the FCC is maintained in our files.

- IC - Registration No.: 10668A-1

SHENZHEN TONGCE TESTING LAB

CAB identifier: CN0031

The testing lab has been registered by Certification and Engineering Bureau of Industry Canada for radio equipment testing.

4.2. Location

SHENZHEN TONGCE TESTING LAB

Address: 2101 & 2201, Zhenchang Factory Renshan Industrial Zone, Fuhai Subdistrict, Bao'an District, Shenzhen, Guangdong, 518103, People's Republic of China

TEL: +86-755-27673339

4.3. Measurement Uncertainty

The reported uncertainty of measurement $y \pm U$, where expended uncertainty U is based on a standard uncertainty multiplied by a coverage factor of $k=2$, providing a level of confidence of approximately 95 %.

No.	Item	MU
1	Conducted Emission	± 3.10 dB
2	RF power, conducted	± 0.12 dB
3	Spurious emissions, conducted	± 0.11 dB
4	All emissions, radiated(<1 GHz)	± 4.56 dB
5	All emissions, radiated(1 GHz - 18 GHz)	± 4.22 dB
6	All emissions, radiated(18 GHz- 40 GHz)	± 4.36 dB
7	Temperature	$\pm 0.1^{\circ}\text{C}$
8	Humidity	$\pm 1.0\%$

5. Test Results and Measurement Data

5.1. Antenna Requirement

Standard requirement:

FCC Part15 C Section 15.203 /247(c)

15.203 requirement:

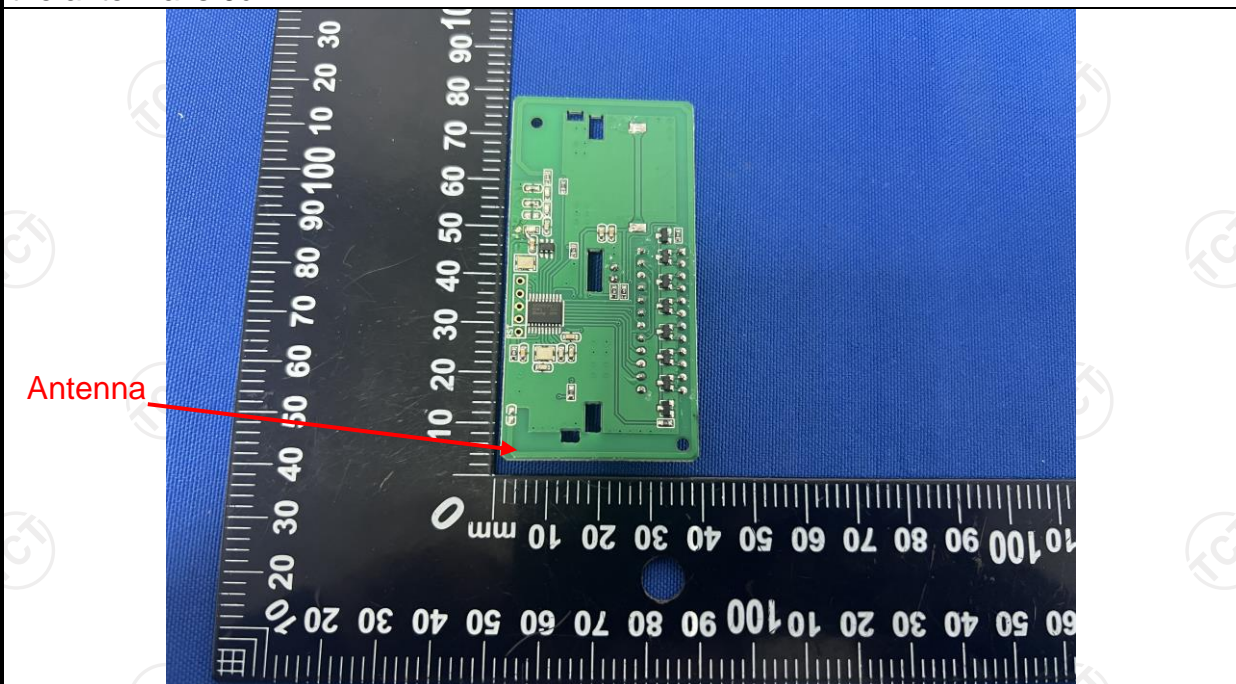
An intentional radiator shall be designed to ensure that no antenna other than that furnished by the responsible party shall be used with the device. The use of a permanently attached antenna or of an antenna that uses a unique coupling to the intentional radiator, the manufacturer may design the unit so that a broken antenna can be replaced by the user, but the use of a standard antenna jack or electrical connector is prohibited.

15.247(c) (1)(i) requirement:

(i) Systems operating in the 2400-2483.5 MHz band that is used exclusively for fixed. Point-to-point operations may employ transmitting antennas with directional gain greater than 6dBi provided the maximum conducted output power of the intentional radiator is reduced by 1 dB for every 3 dB that the directional gain of the antenna exceeds 6dBi.

E.U.T Antenna:

The antenna is PCB antenna which permanently attached, and the best case gain of the antenna is 0dBi.



5.2. Conducted Emission

5.2.1. Test Specification

Test Requirement:	FCC Part15 C Section 15.207														
Test Method:	ANSI C63.4:2014														
Frequency Range:	150 kHz to 30 MHz														
Receiver setup:	RBW=9 kHz, VBW=30 kHz, Sweep time=auto														
Limits:	<table><tr><th rowspan="2">Frequency range (MHz)</th><th colspan="2">Limit (dBuV)</th></tr><tr><th>Quasi-peak</th><th>Average</th></tr><tr><td>0.15-0.5</td><td>66 to 56*</td><td>56 to 46*</td></tr><tr><td>0.5-5</td><td>56</td><td>46</td></tr><tr><td>5-30</td><td>60</td><td>50</td></tr></table>	Frequency range (MHz)	Limit (dBuV)		Quasi-peak	Average	0.15-0.5	66 to 56*	56 to 46*	0.5-5	56	46	5-30	60	50
Frequency range (MHz)	Limit (dBuV)														
	Quasi-peak	Average													
0.15-0.5	66 to 56*	56 to 46*													
0.5-5	56	46													
5-30	60	50													
Test Setup:	<div><div>Reference Plane</div><div><div>40cm</div><div><div>E.U.T</div><div>AC power</div></div><div>Test table/Insulation plane</div><div>80cm</div><div>LISN</div><div>Filter</div><div>AC power</div><div>EMI Receiver</div></div><div><div>Remark</div><div>E.U.T: Equipment Under Test</div><div>LISN: Line Impedance Stabilization Network</div><div>Test table height=0.8m</div></div></div>														
Test Mode:	Transmitting Mode														
Test Procedure:	<div><div>1. The E.U.T and simulators are connected to the main power through a line impedance stabilization network (L.I.S.N.). This provides a 50ohm/50uH coupling impedance for the measuring equipment.</div><div>2. The peripheral devices are also connected to the main power through a LISN that provides a 50ohm/50uH coupling impedance with 50ohm termination. (Please refer to the block diagram of the test setup and photographs).</div><div>3. Both sides of A.C. line are checked for maximum conducted interference. In order to find the maximum emission, the relative positions of equipment and all of the interface cables must be changed according to ANSI C63.4: 2014 on conducted measurement.</div></div>														
Test Result:	N/A; Because the EUT is powered by the battery, so the item is not applicable.														

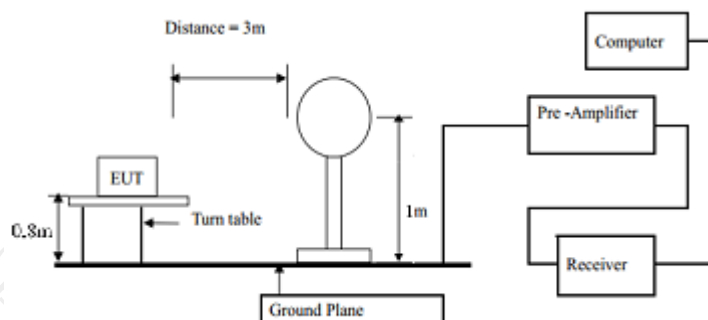
5.3. Radiated Emission Measurement

5.3.1. Test Specification

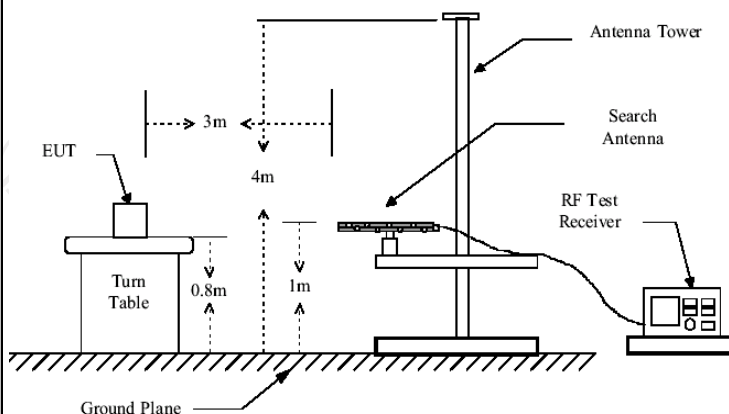
Test Requirement:	FCC Part15 C Section 15.231(a) and 15.209				
Test Method:	ANSI C63.4: 2014 and ANSI C63.10:2013				
Frequency Range:	9 kHz to 5 GHz				
Measurement Distance:	3 m				
Antenna Polarization:	Horizontal & Vertical				
Receiver Setup:	Frequency	Detector	RBW	VBW	Remark
	9kHz- 150kHz	Quasi-peak	200Hz	1kHz	Quasi-peak Value
	150kHz- 30MHz	Quasi-peak	9kHz	30kHz	Quasi-peak Value
	30MHz-1GHz	Quasi-peak	120KHz	300KHz	Quasi-peak Value
	Above 1GHz	Peak	1MHz	3MHz	Peak Value
		Peak	1MHz	10Hz	Average Value
Test Procedure:	<ol style="list-style-type: none"> 1. The EUT was placed on the top of a rotating table 0.8 meters above the ground at a 3 meter camber in below 1GHz, 1.5m above the ground in above 1GHz. The table was rotated 360 degrees to determine the position of the highest radiation. 2. The EUT was set 3 meters away from the interference-receiving antenna, which was mounted on the top of a variable-height antenna tower. 3. The antenna height is varied from one meter to four meters above the ground to determine the maximum value of the field strength. Both horizontal and vertical polarizations of the antenna are set to make the measurement. 4. For each suspected emission, the EUT was arranged to its worst case and then the antenna was tuned to heights from 1 meter to 4 meters and the rotatable table was turned from 0 degrees to 360 degrees to find the maximum reading. 5. The test-receiver system was set to Peak Detect Function and Specified Bandwidth with Maximum Hold Mode. 6. If the emission level of the EUT in peak mode was 10dB lower than the limit specified, then testing could be stopped and the peak values of the EUT would be reported. Otherwise the emissions that did not have 10dB margin would be re-tested one by one using peak, quasi-peak or average method as specified and then reported in a data sheet. 				

Test setup:

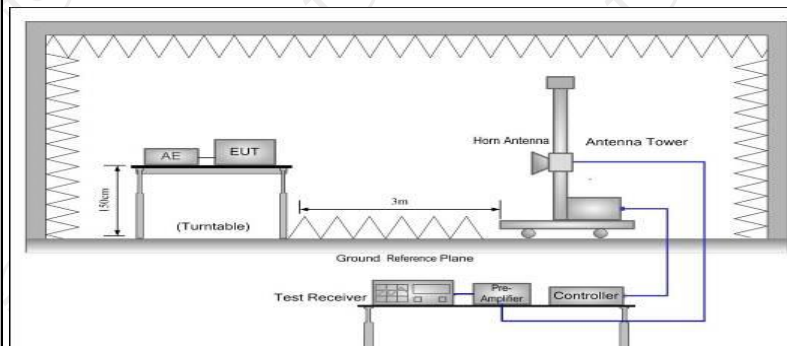
For radiated emissions below 30MHz



30MHz to 1GHz



Above 1GHz



Test Mode:

Refer to Item 3.1

Test results:

PASS

5.3.2. Limit

Fundamental Frequency (MHz)	Filed Strength of Fundamental (microvolts/meter)	Filed Strength of Spurious Emission (microvolts/meter)
40.66-40.70	2250	225
70-130	1250	125
130-174	1250 to 3750*	125 to 375*
174-260	3750	375
260-470	3750 to 12500*	375 to 1250*
Above 470	12500	1250
Horn Antenna	Schwarzbeck	BBHA 9120D
*Linear interpolations		
[Where F is the frequency in MHz, the formulas for calculating the maximum permitted fundamental field strengths are as follows: For the band 130-174 MHz, $\mu\text{V/m}$ at 3 meters = $56.81818(F) - 6136.3636$; for the band 260-470 MHz, $\mu\text{V/m}$ at 3 meters = $41.6667(F) - 7083.3333$. The maximum permitted unwanted emission level is 20 dB below the maximum permitted fundamental level.		

For EUT

Fundamental Frequency (MHz)	Filed Strength of Fundamental (dB $\mu\text{V/m}$)	Filed Strength of Spurious Emission (dB $\mu\text{V/m}$)
310	75.32	55.32
315	75.62	55.62
390	79.24	59.24
Note: <ol style="list-style-type: none"> 1. Intentional radiators operating under the provisions of this Section shall demonstrate compliance with the limits on the field strength of emissions, as shown in the above table, based on the average value of the measured emissions. 2. According to 15.35, on any frequency or frequencies below or equal to 1000 MHz, the limits shown are based on measuring equipment employing a CISPR quasi-peak detector function and related measurement bandwidths, unless otherwise specified the limit on peak radio frequency emissions is 20dB above the maximum permitted average emission limit applicable to the equipment under test. 3. According to 15.231(b), The limits on the field strength of the spurious emissions in the above table is based on the fundamental frequency of the intentional radiator. Spurious emissions shall be attenuated to the average (or, alternatively, CISPR quasi-peak) limits shown in this table or to the general limits shown in Section 15.209, whichever limit permits one higher field strength. 		

Frequencies in restricted band are complied to limit on Paragraph 15.209

Frequency Range (MHz)	Distance (m)	Field strength (dB μ V/m)
0.009-0.490	3	$20\log 2400/F$ (kHz) + 80
0.490-1.705	3	$20\log 24000/F$ (kHz) + 40
1.705-30	3	$20\log 30$ + 40
30-88	3	40.0
88-216	3	43.5
216-960	3	46.0
Above 960	3	54.0

Note:

1. RF Voltage (dBuV) = $20 \log$ RF Voltage (μ V)
2. In the Above Table, the tighter limit applies at the band edges.
3. Distance refers to the distance in meters between the measuring instrument antenna and the EUT
4. The radiated emissions should be tested under 3-axes position (Lying, Side, and Stand), After pre-test. It was found that the worse radiated emission was get at the lying position.
5. If measurement is made at 3m distance, then F.S Limitation at 3m distance is adjusted by using the formula $Ld1 = Ld2 * (d2/d1)$

5.3.3. Test Instruments

Radiated Emission Test Site (966)				
Name of Equipment	Manufacturer	Model	Serial Number	Calibration Due
EMI Test Receiver	R&S	ESIB7	100197	Jun. 29, 2024
Spectrum Analyzer	R&S	FSQ40	200061	Jun. 29, 2024
Pre-amplifier	SKET	LNPA_0118G-45	SK2021012102	Jan. 31, 2025
Pre-amplifier	SKET	LNPA_1840G-50	SK202109203500	Jan. 31, 2025
Pre-amplifier	HP	8447D	2727A05017	Jun. 27, 2024
Loop antenna	Schwarzbeck	FMZB1519B	00191	Jul. 02, 2024
Broadband Antenna	Schwarzbeck	VULB9163	340	Jul. 01, 2024
Horn Antenna	Schwarzbeck	BBHA 9120D	631	Jul. 01, 2024
Horn Antenna	Schwarzbeck	BBHA 9170	00956	Feb. 02, 2025
Coaxial cable	SKET	RC-18G-N-M	/	Jan. 31, 2025
Coaxial cable	SKET	RC_40G-K-M	/	Jan. 31, 2025
EMI Test Software	Shurple Technology	EZ-EMC	/	/

5.3.4. Test Data

Duty Cycle Test Data:

310MHz:

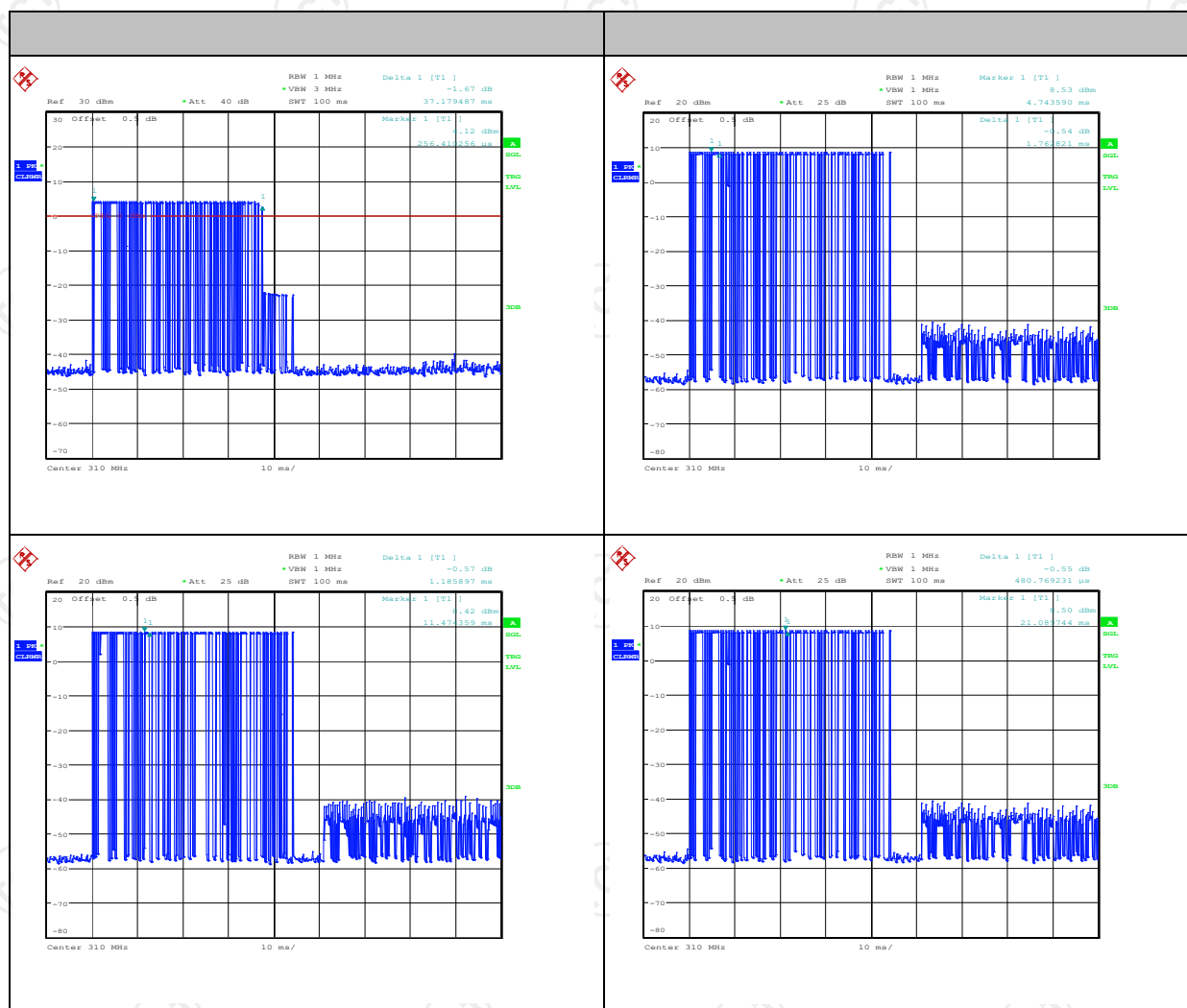
Total time(ms)	Effective time(ms)	Duty Cycle	AV Factor(dB)
100	29.80	0.30	-10.46

Note:

Effective time= $1.76 \times 2 + 1.19 \times 12 + 0.48 \times 25 = 29.80\text{ms}$

Duty Cycle= Effective time/ Total time= 0.30

AV Factor = $20 \log(\text{Duty Cycle}) = -10.46$



315MHz:

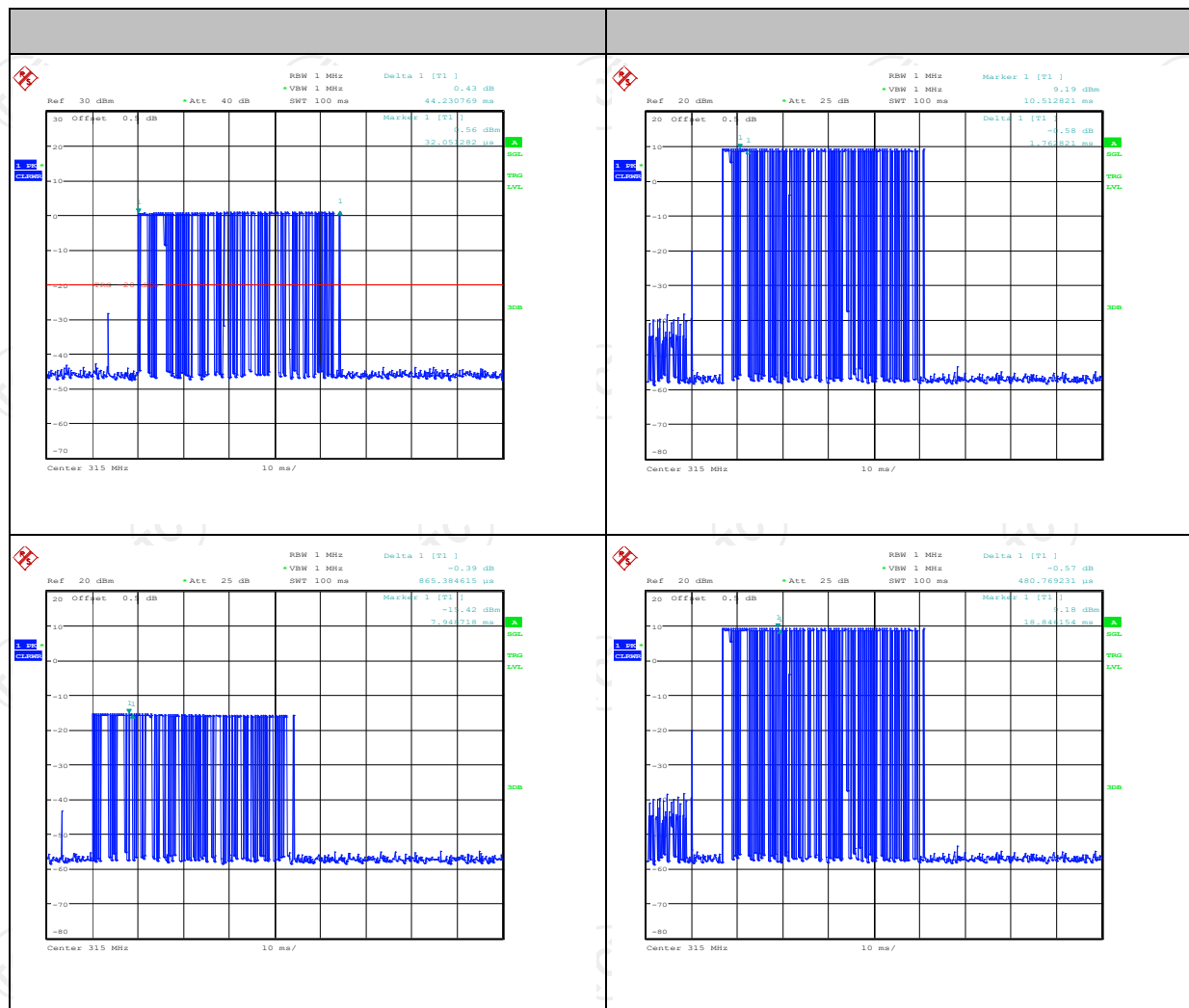
Total time(ms)	Effective time(ms)	Duty Cycle	AV Factor(dB)
100	36.91	0.37	-8.64

Note:

Effective time=1.76*2+0.87*13+0.48*46= 36.91ms

Duty Cycle= Effective time/ Total time= 0.37

AV Factor = 20 log(Duty Cycle)= -8.64



390MHz:

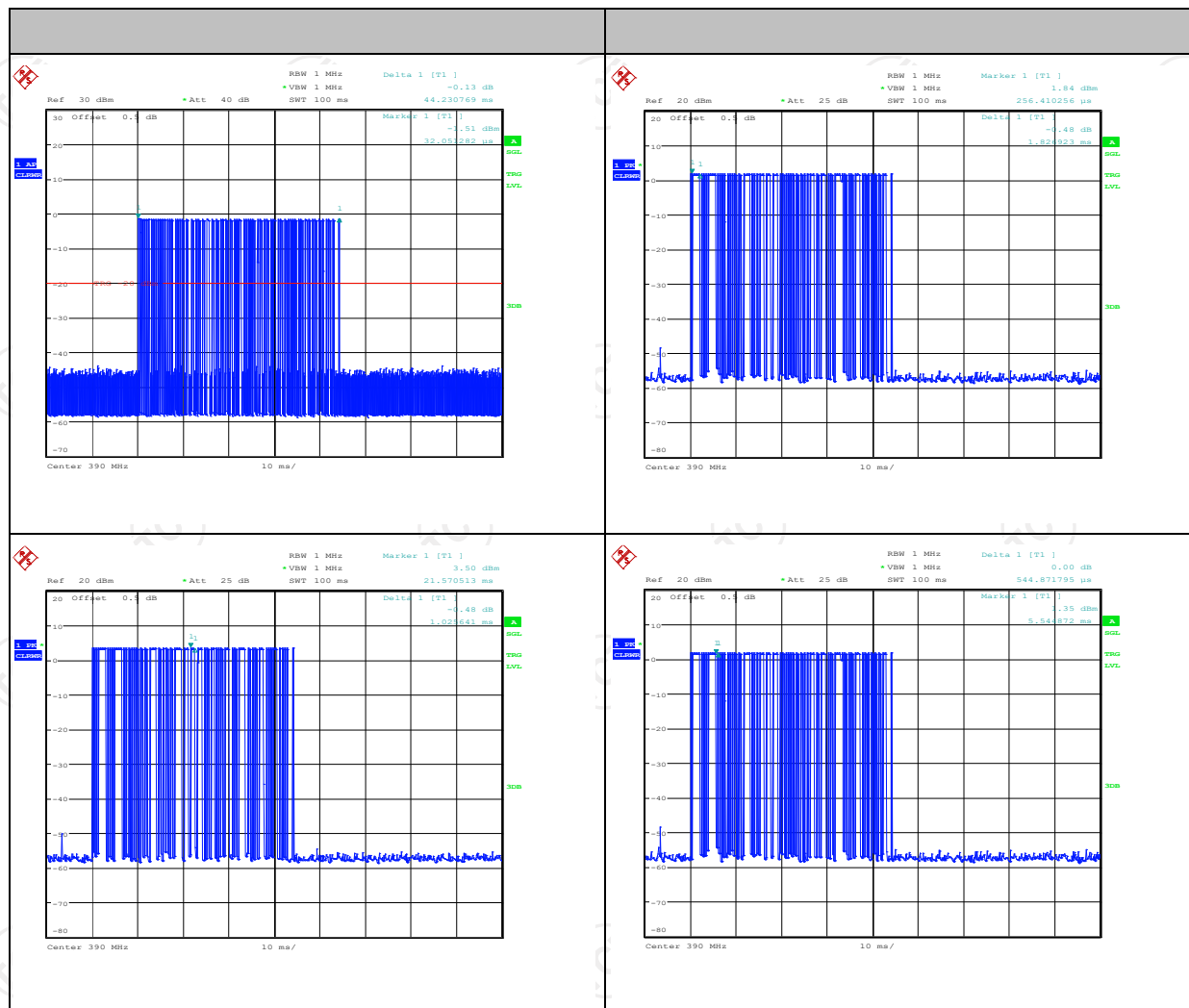
Total time(ms)	Effective time(ms)	Duty Cycle	AV Factor(dB)
100	37.11	0.37	-8.64

Note:

Effective time= $1.83*4+1.03*9+0.54*38=37.11\text{ms}$

Duty Cycle= Effective time/ Total time= 0.37

AV Factor = $20 \log(\text{Duty Cycle}) = -8.64$



Field Strength of Fundamental

Frequency (MHz)	Emission PK (dBuV/m)	Horizontal /Vertical	Limits PK (dBuV/m)	Margin (dB)
310	67.54	H	95.32	-27.78
310	61.57	V	95.32	-33.75
315	68.73	H	95.62	-26.89
315	68.58	V	95.62	-27.04
390	68.71	H	99.24	-30.53
390	57.94	V	99.24	-41.30

Frequency (MHz)	Emission PK (dBuV/m)	AV Factor(dB)	Horizontal /Vertical	Emission AVG (dBuV/m)	Limits AV (dBuV/m)	Margin (dB)
310	67.54	-10.46	H	57.08	75.32	-18.24
310	61.57	-10.46	V	51.11	75.32	-24.21
315	68.73	-8.64	H	60.09	75.62	-15.53
315	68.58	-8.64	V	59.94	75.62	-15.68
390	68.71	-8.64	H	60.07	79.24	-19.17
390	57.94	-8.64	V	49.30	79.24	-29.94

Harmonics and Spurious Emissions

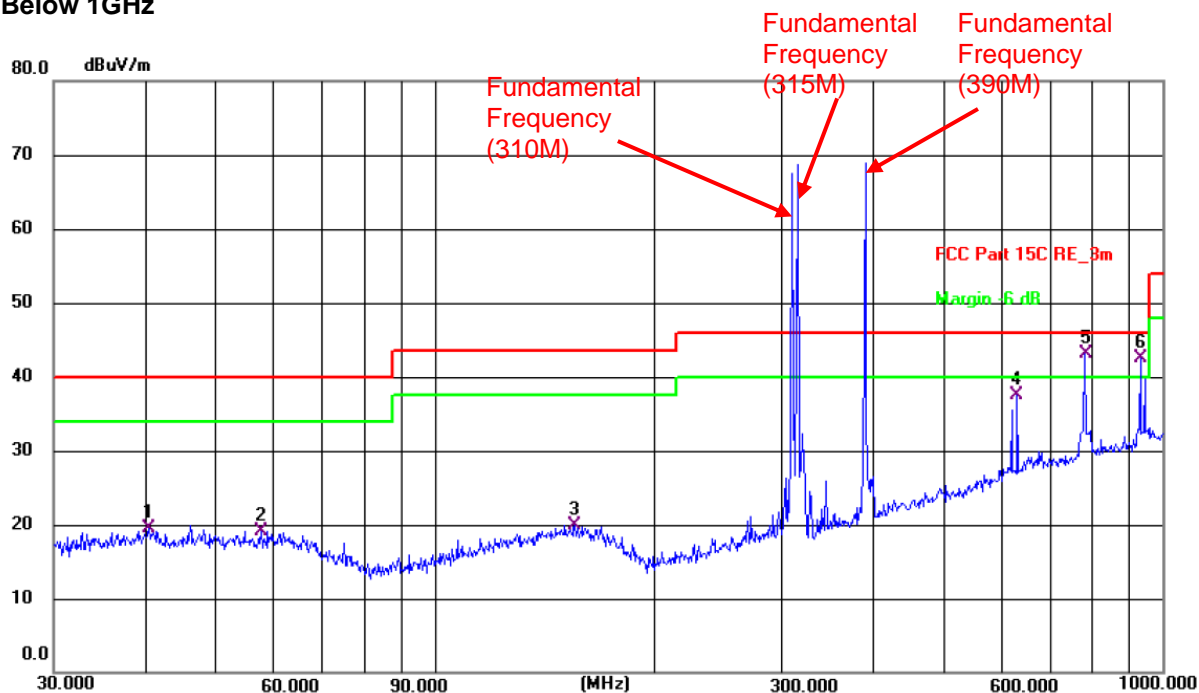
Frequency Range (9 kHz-30MHz)

Frequency (MHz)	Level@3m (dBμV/m)	Limit@3m (dBμV/m)
--	--	--
--	--	--
--	--	--
--	--	--

Note: 1. Emission Level=Reading+ Cable loss-Antenna factor-Amp factor

2. The emission levels are 20 dB below the limit value, which are not reported. It is deemed to comply with the requirement

Below 1GHz



Site #2 3m Anechoic Chamber

Polarization: **Horizontal**

Temperature: 23.7(C) Humidity: 54 %

Limit: FCC Part 15C RE_3m

Power: DC 3 V

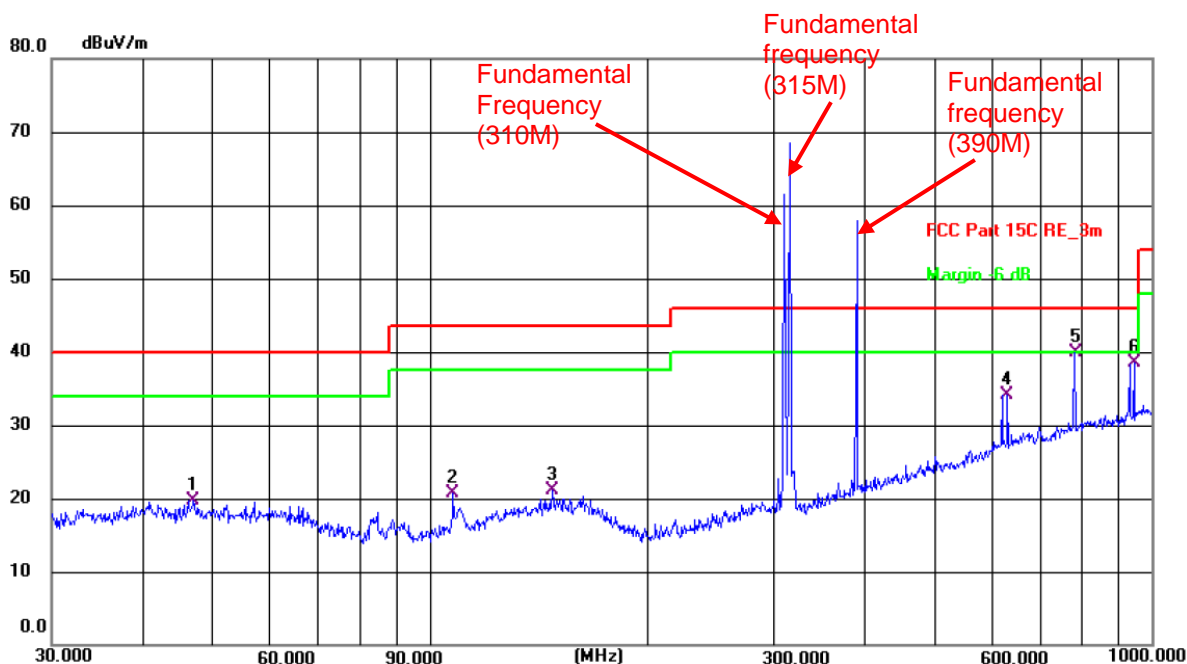
No.	Frequency (MHz)	Reading (dBuV)	Factor (dB/m)	Level (dBuV/m)	Limit (dBuV/m)	Margin (dB)	Detector	P/F	Remark
1	40.5591	5.37	14.12	19.49	40.00	-20.51	QP	P	
2	57.7961	5.41	13.61	19.02	40.00	-20.98	QP	P	
3	155.9100	4.63	15.27	19.90	43.50	-23.60	QP	P	
4	631.6883	15.19	22.38	37.57	46.00	-8.43	QP	P	
5 *	782.3452	18.88	24.25	43.13	46.00	-2.87	QP	P	
6 !	932.2714	16.67	25.90	42.57	46.00	-3.43	QP	P	

Note:

310MHz: The limit value of the fundamental frequency is 95.32dBuV/m.

315MHz: The limit value of the fundamental frequency is 95.62dBuV/m.

390MHz: The limit value of the fundamental frequency is 99.24dBuV/m.



Site #2 3m Anechoic Chamber

Polarization: **Vertical**

Temperature: 23.7(C) Humidity: 54 %

Limit: FCC Part 15C RE_3m

Power: DC 3 V

No.	Frequency (MHz)	Reading (dBuV)	Factor (dB/m)	Level (dBuV/m)	Limit (dBuV/m)	Margin (dB)	Detector	P/F	Remark
1	47.1597	6.04	13.75	19.79	40.00	-20.21	QP	P	
2	107.8876	9.12	11.53	20.65	43.50	-22.85	QP	P	
3	147.9214	6.55	14.65	21.20	43.50	-22.30	QP	P	
4	631.6883	11.75	22.38	34.13	46.00	-11.87	QP	P	
5 *	782.3453	15.68	24.25	39.93	46.00	-6.07	QP	P	
6	945.4400	12.27	26.18	38.45	46.00	-7.55	QP	P	

Note:

310MHz: The limit value of the fundamental frequency is 95.32dBuV/m.

315MHz: The limit value of the fundamental frequency is 95.62dBuV/m.

390MHz: The limit value of the fundamental frequency is 99.24dBuV/m.

Above 1GHz (PK value)

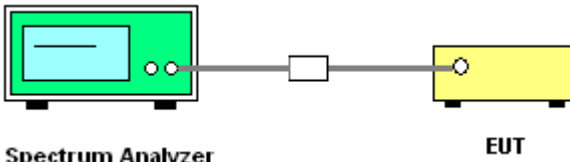
Frequency PK Value (MHz)	Read Level PK (dBuV)	Correction Factor (dB/m)	Level PK (dBuV/m)	Limit Line PK (dBuV/m)	Over Limit (dB)	Polarization
1240	65.51	-18.04	47.47	75.32	-27.85	Vertical
1550	63.90	-17.52	46.38	75.32	-28.94	Vertical
1260	65.98	-18.16	47.82	75.62	-27.80	Vertical
1575	62.24	-17.63	44.61	75.62	-31.01	Vertical
1170	65.33	-18.42	46.91	79.24	-32.33	Vertical
1560	62.62	-17.85	44.77	79.24	-34.47	Vertical
1240	63.69	-18.04	45.65	75.32	-29.67	Horizontal
1550	60.01	-17.52	42.49	75.32	-32.83	Horizontal
1260	63.87	-18.16	45.71	75.62	-29.91	Horizontal
1575	60.72	-17.63	43.09	75.62	-32.53	Horizontal
1170	63.09	-18.42	44.67	79.24	-34.57	Horizontal
1560	60.07	-17.85	42.22	79.24	-37.02	Horizontal

Note:

1. Emission Level=Peak Reading + Correction Factor; Correction Factor= Antenna Factor + Cable loss – Pre-amplifier
2. Margin (dB) = Emission Level (dBuV/m)- limit (dBuV/m)
3. The emission levels of other frequencies are very lower than the limit and not show in test report.
4. Measurements were conducted from 1 GHz to the 10th harmonic of highest fundamental frequency.
5. Data of measurement shown “*” in the above table mean that the reading of emissions is attenuated more than 20 dB below the limits or the field strength is too small to be measured.

5.4. Manually Activated Transmitter

5.4.1. Test Specification

Test Requirement:	FCC Part15 C Section 15.231(a)(1)
Test Method:	ANSI C63.10: 2013
Limit:	According to 15.231(a), A manually operated transmitter shall employ a switch that will automatically deactivate the transmitter within not more than 5 seconds of being released.
Test Procedure:	<ol style="list-style-type: none"> 1. According to the follow Test-setup, keep the relative position between the artificial antenna and the EUT. 2. Set to the maximum power setting and enable the EUT transmit continuously. 3. Use the following spectrum analyzer settings. VBW = 1MHz, VBW\geqRBW; Span = 0; Sweep Time > T(on)+5S; Detector function = peak; 4. Measure and record the results in the test report.
Test setup:	 <p>The diagram illustrates the test setup. On the left is a Spectrum Analyzer, represented by a green rectangle with a blue screen and two red dots. A black cable connects it to a small white rectangular component, which is then connected to the EUT (Equipment Under Test), represented by a yellow rectangle with a black dot. Below the Spectrum Analyzer is the label 'Spectrum Analyzer' and below the EUT is the label 'EUT'.</p>
Test Mode:	Refer to Item 3.1
Test results:	PASS

5.4.2. Test Instruments

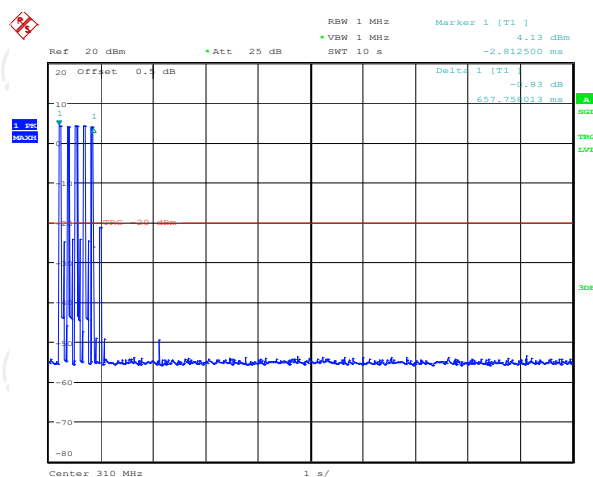
RF Test Room				
Equipment	Manufacturer	Model	Serial Number	Calibration Due
Spectrum Analyzer	R&S	FSU	200054	Jun. 27, 2024

5.4.3. Test data

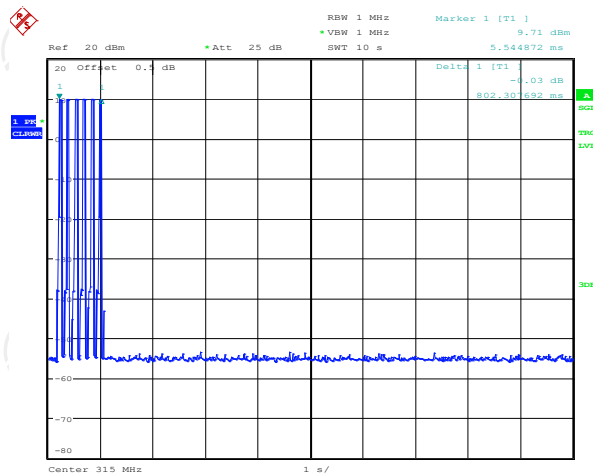
Test Channel (MHz)	Manually Activated Transmitter (s)	Limit (s)	Conclusion
310	0.66	5	PASS
315	0.80		
390	0.80		

Test plots as follows:

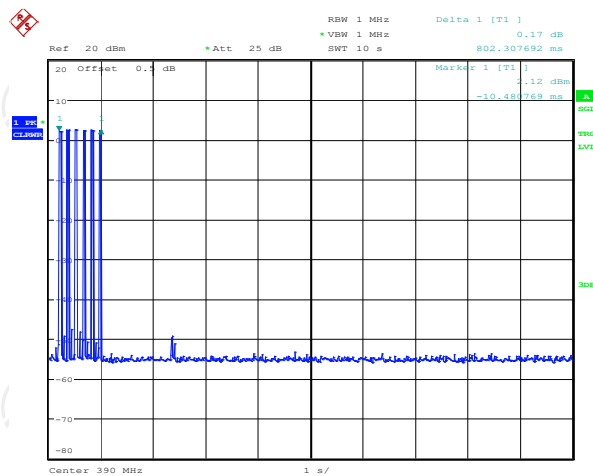
310MHz



315MHz




390MHz



5.5. Occupied Bandwidth

5.5.1. Test Specification

Test Requirement:	FCC Part15 C Section 15.231C
Test Method:	ANSI C63.10: 2013
Limit:	According to 15.231(c), The bandwidth of the emission shall be no wider than 0.25% of the centre frequency for devices operating above 70 MHz and below 900 MHz. For devices operating above 900 MHz, the emission shall be no wider than 0.5% of the centre frequency. Bandwidth is determined at the points 20 dB down from the modulated carrier.
Test Procedure:	<ol style="list-style-type: none"> 1. According to the follow Test-setup, keep the relative position between the artificial antenna and the EUT. 2. Set to the maximum power setting and enable the EUT transmit continuously. 3. Use the following spectrum analyzer settings for 20dB Bandwidth measurement. Span = 50 KHz, centered on a hopping channel; RBW =3 KHz; VBW=10 KHz; Sweep = auto; Detector function = peak; Trace = max hold. 4. Measure and record the results in the test report.
Test setup:	 <p>The diagram illustrates the test setup. On the left is a green Spectrum Analyzer. A cable connects it to a small white rectangular component, which is then connected to a yellow rectangular component labeled 'EUT' (Equipment Under Test).</p>
Test Mode:	Refer to Item 3.1
Test results:	PASS

5.5.2. Test Instruments

RF Test Room				
Equipment	Manufacturer	Model	Serial Number	Calibration Due
Spectrum Analyzer	R&S	FSU	200054	Jun. 27, 2024

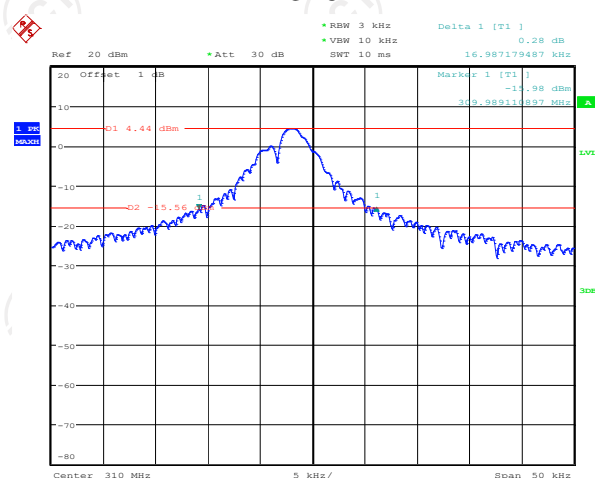
5.5.3. Test data

Test Channel (MHz)	20dB Occupy Bandwidth (kHz)	Limit (kHz)	Conclusion
310	16.99	775	PASS
315	18.91	787.50	PASS
390	17.87	975	PASS

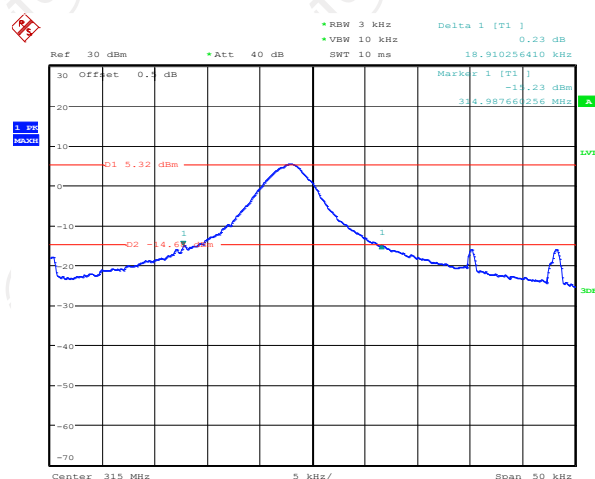
Note: Limit = 310MHz * 0.25% = 775 kHz, Limit = 315MHz * 0.25% = 787.50 kHz,
Limit = 390MHz * 0.25% = 975 kHz

Test plots as follows:

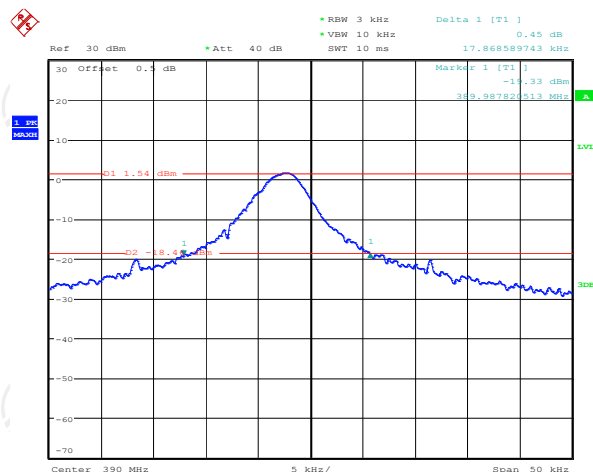
310MHz



315MHz



390MHz

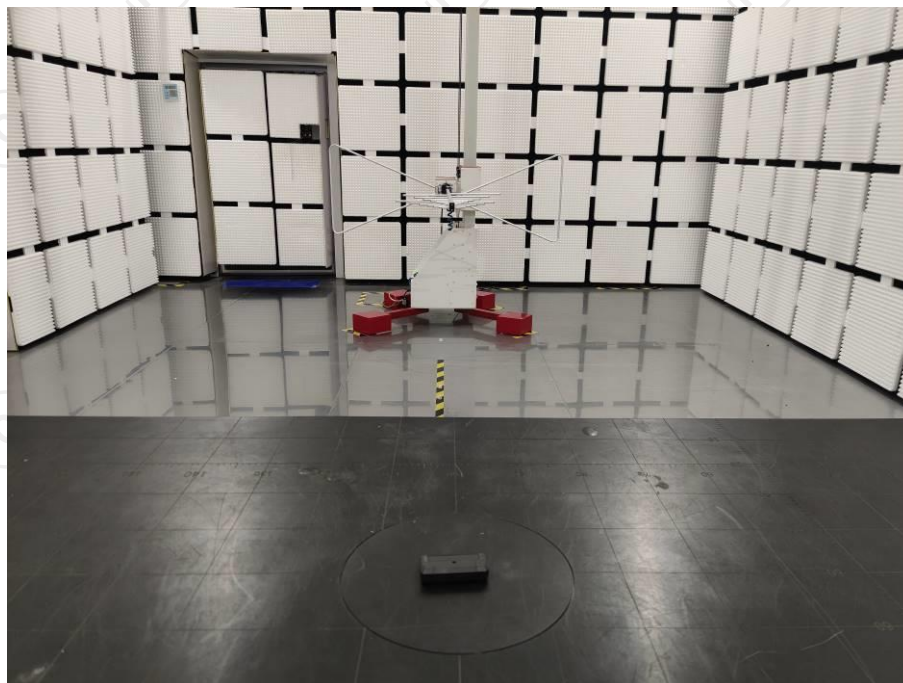


Appendix A: Photographs of Test Setup

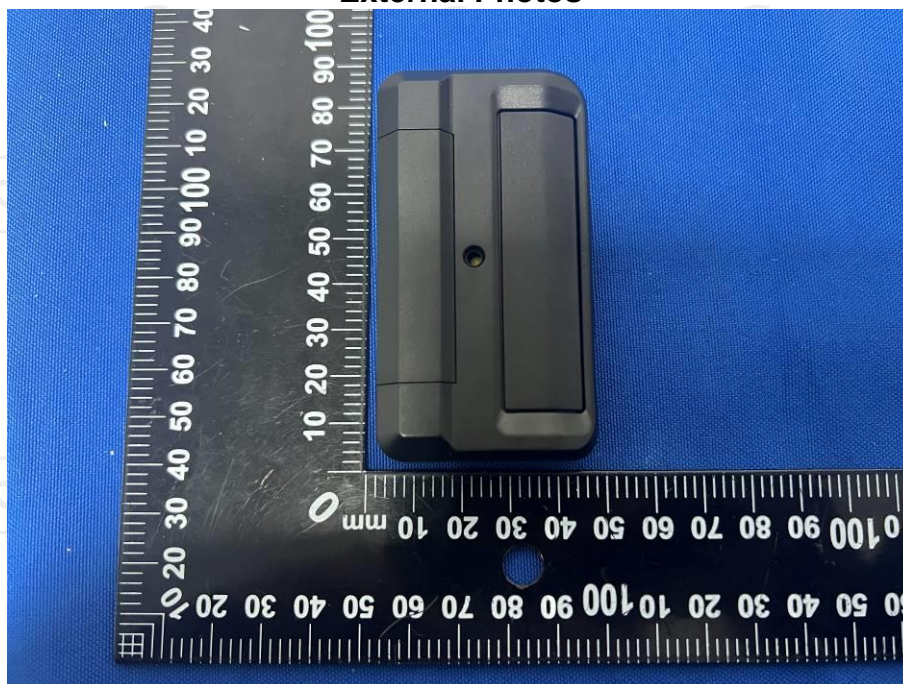
Product: GARAGE DOOR REMOTE CONTROL

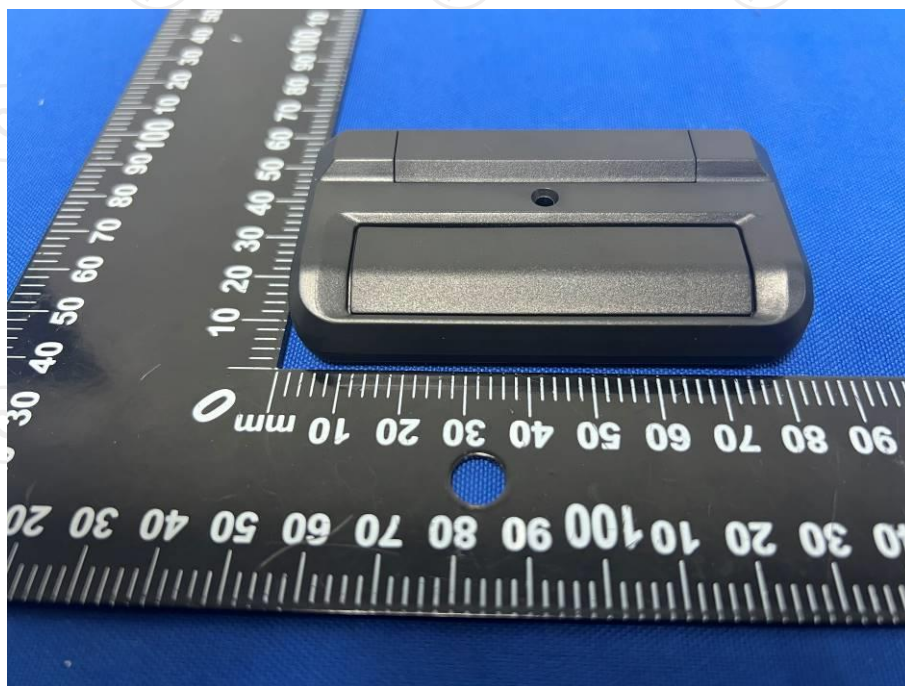
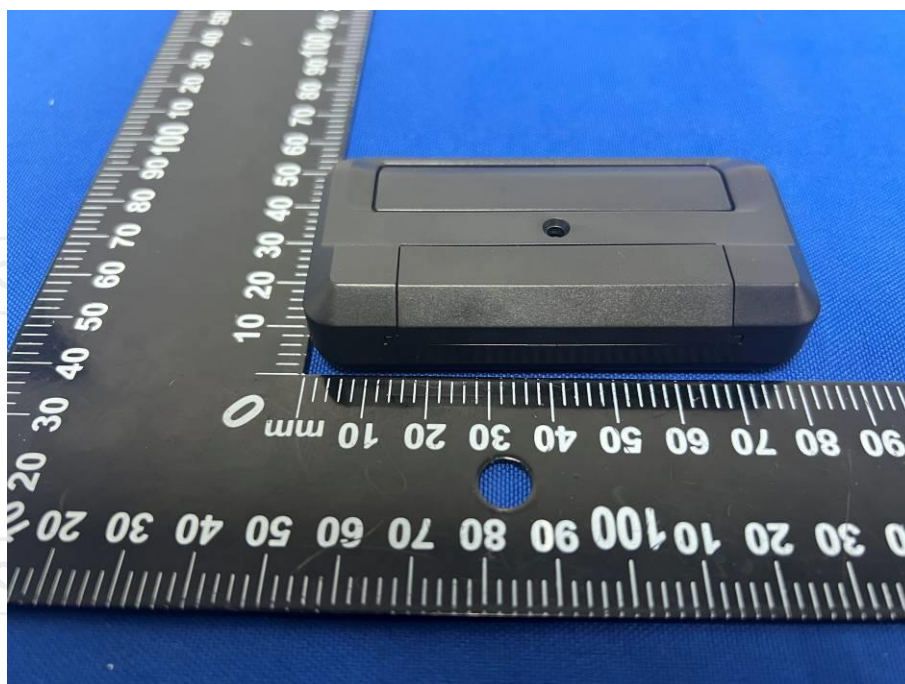
Model: J-811LM

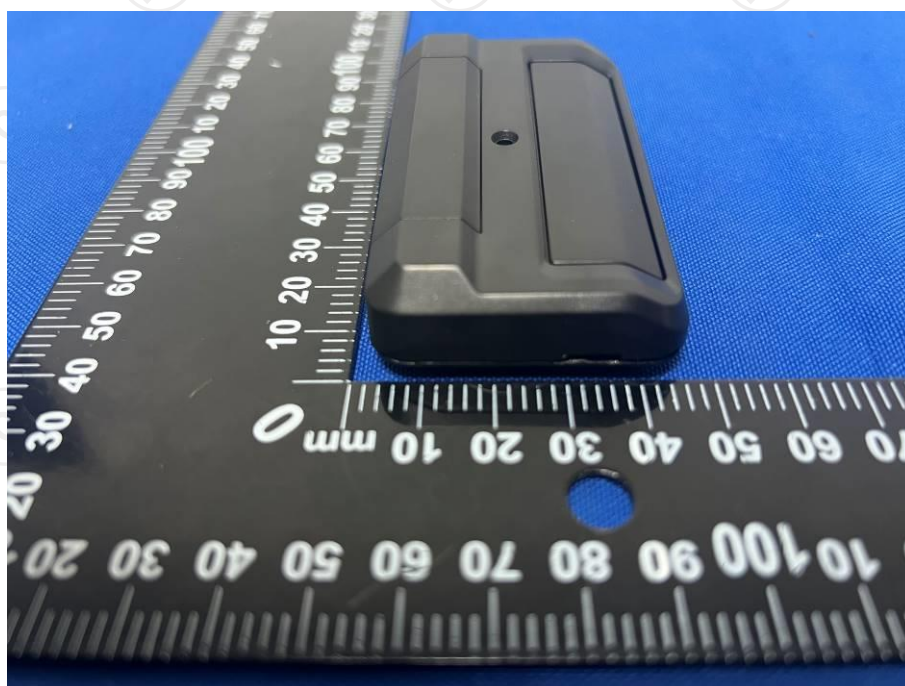
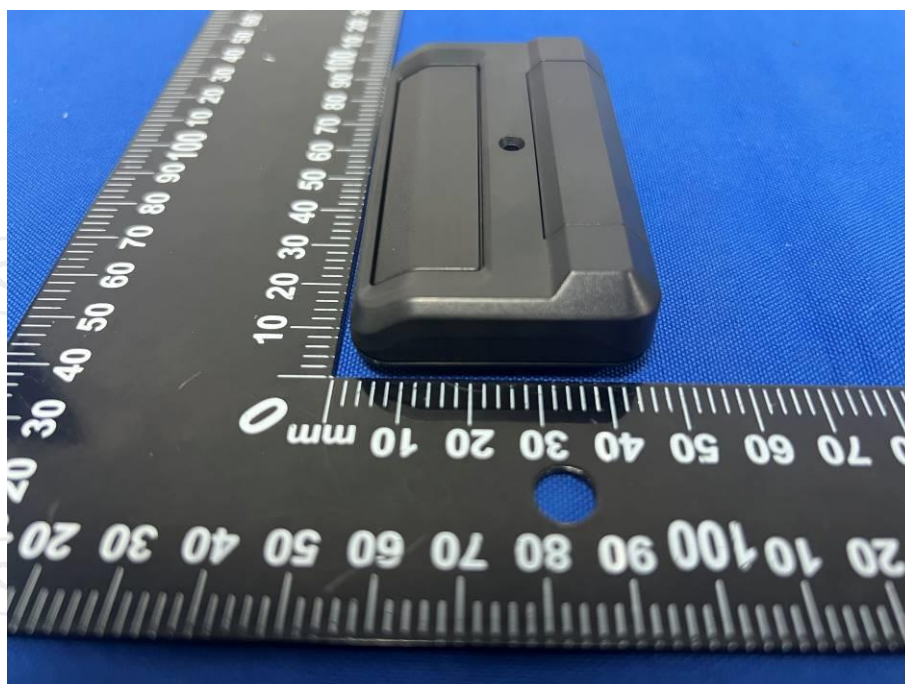
Radiated Emission



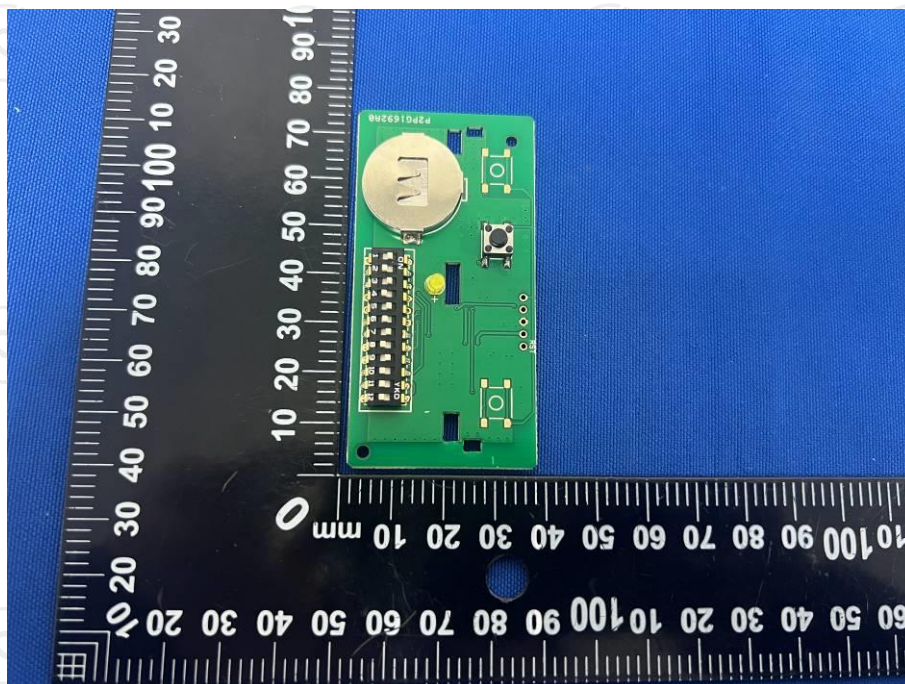
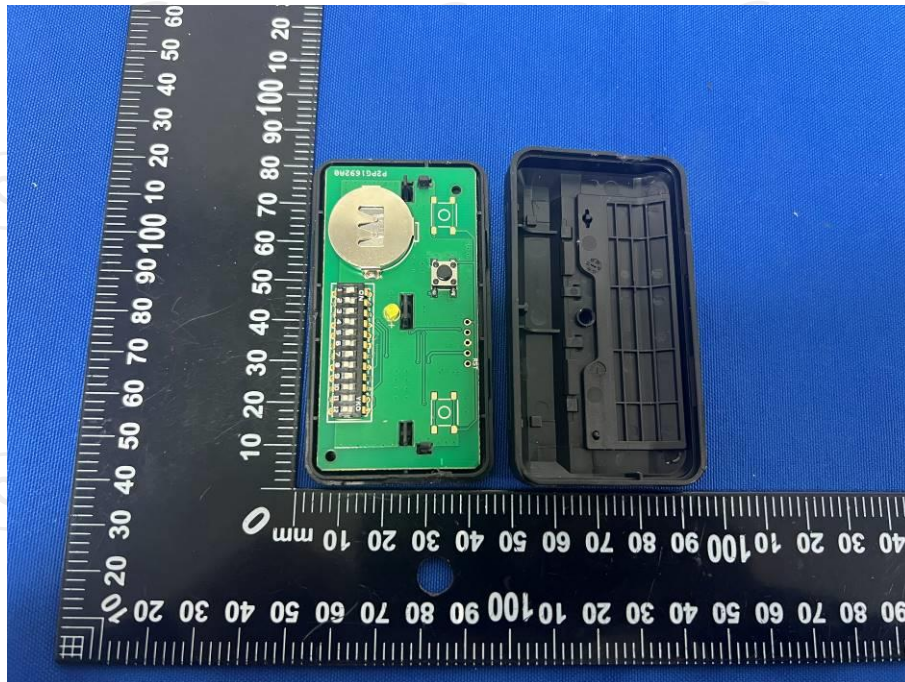
Appendix B: Photographs of EUT
Product: GARAGE DOOR REMOTE CONTROL
Model: J-811LM
External Photos

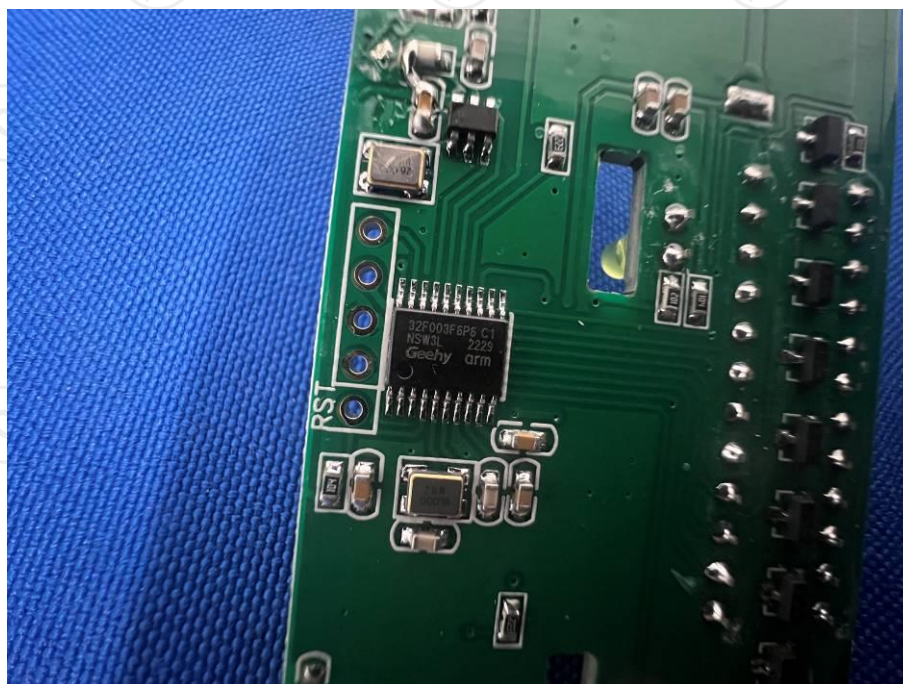
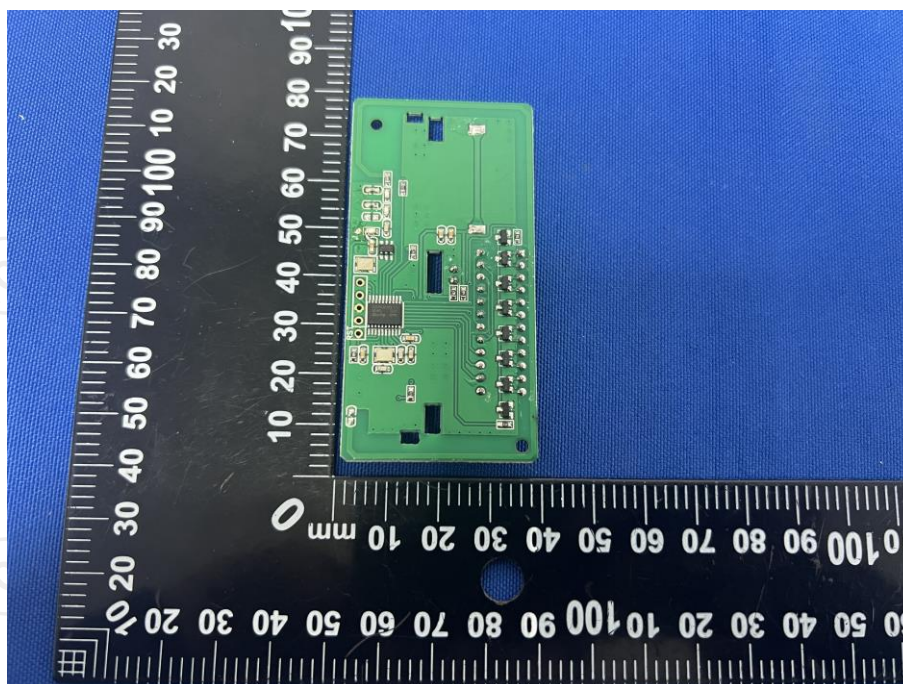






Product: GARAGE DOOR REMOTE CONTROL
Model: J-811LM
Internal Photos





*******END OF REPORT*******