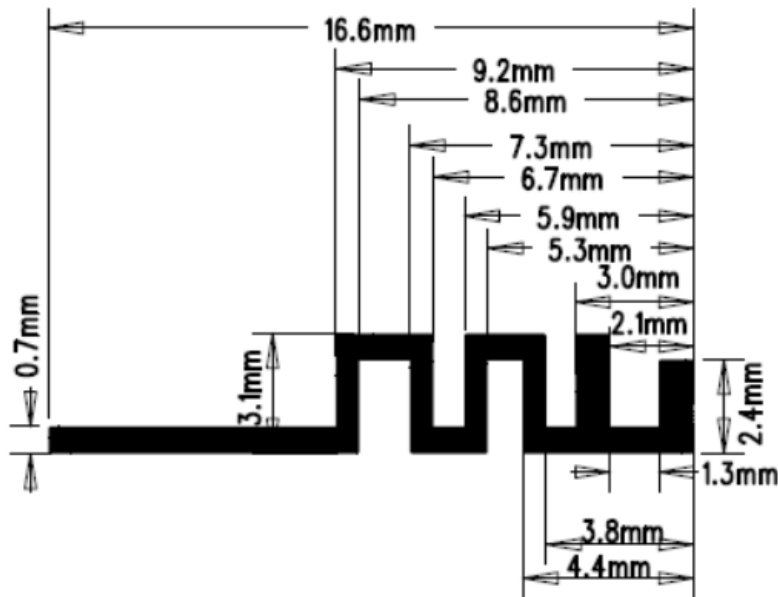


## 1. Antenna Description:

Antenna type	PCB antenna
Model	BY963
Frequency range	5180-5240MHz, 5745-5825MHz
Manufacturer	Shenzhen Boyi Electronics Co., Ltd.
ANT Peak Gain	0.75 dBi

## 2. Antenna Photo:

# WIFI\_5G\_ANT



## 3. Test Equipment & Conditions

### 3.1 Test instrument

VSWR is tested using Agilent E5071B connected to a hand mechanism, and the status is free space.

### 3.2 Test environment and methods

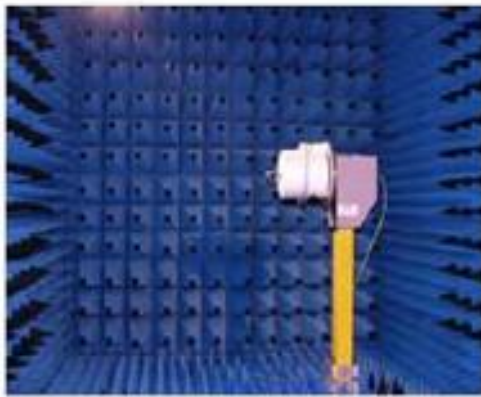
Dark room specifications: ETS-743

TD-SCDMA test equipment: StarPoint SP6010/Agilent 8960

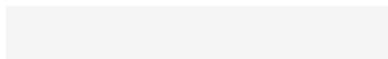
LTE-TDD/FDD-SCDMA test equipment: StarPoint SP8011/CMW500

WCDMA/GSM/CDMA test equipment: Agilent 8960

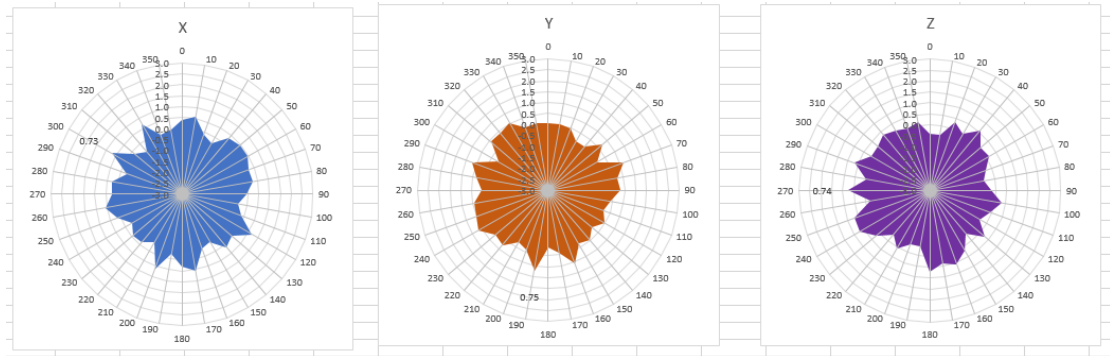
Passive efficiency testing equipment: Agilent Technologies E5071B



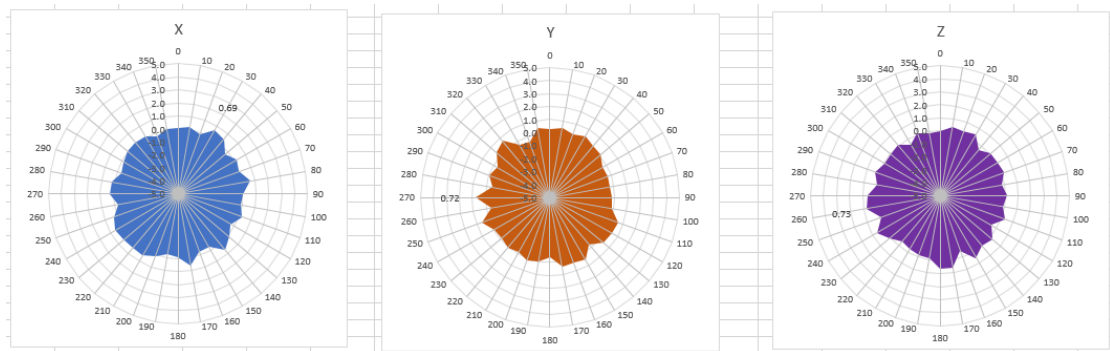
## 4 . Antenna Radiation Pattern



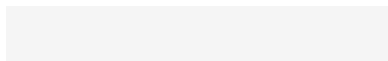
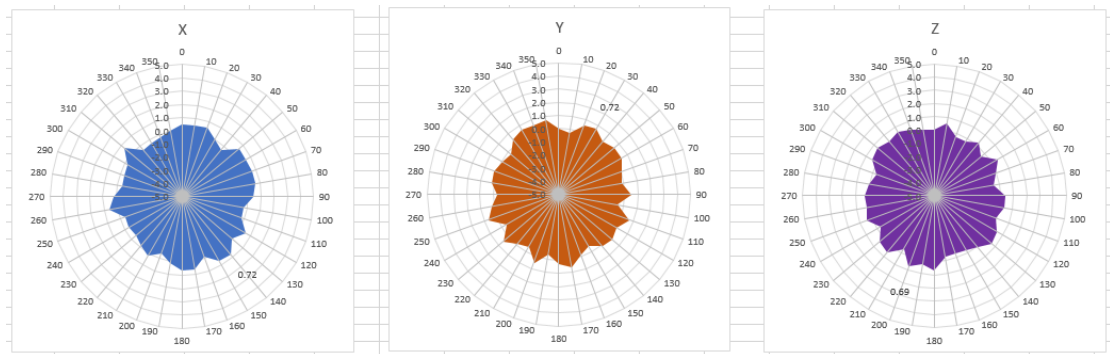
# 5180MHz



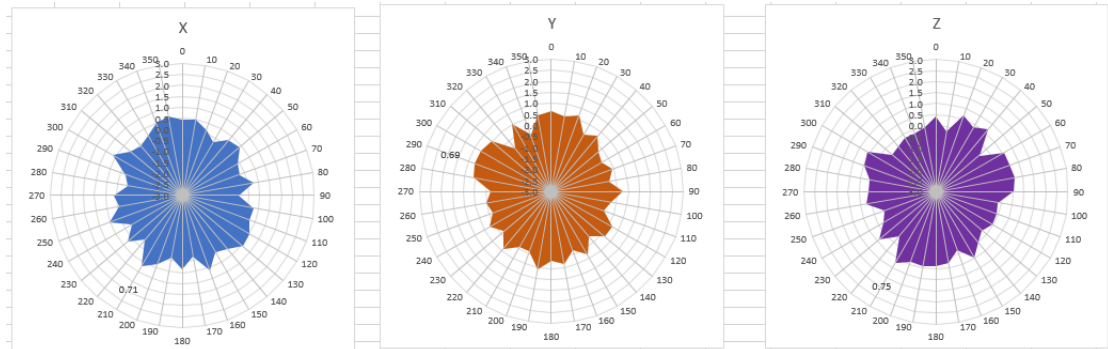
# 5220MHz



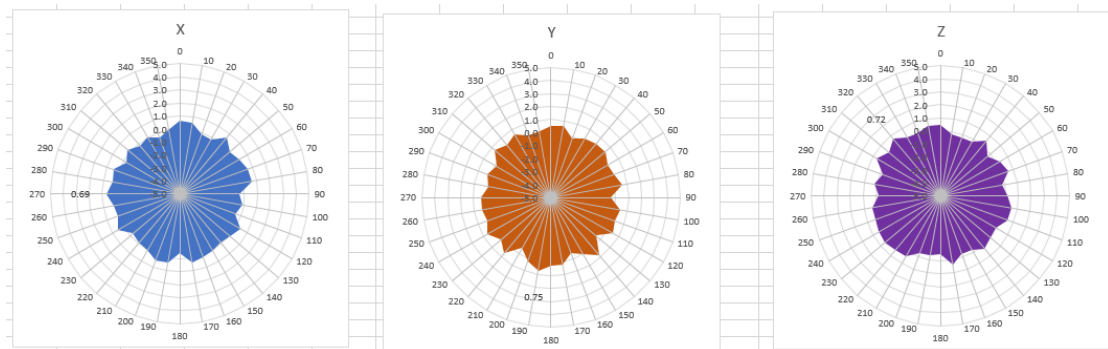
# 5240MHz



# 5745MHz



# 5785MHz



# 5825MHz

