



# 承认书

## SPECIFICATION FOR APPROVAL

客户 Customer: 博屹

品牌 Brand: 路恒达

品名 Description: WIFI 天线

规格/型号

Specification

/part no: 3.0dBi@2.4G,4.0dBi@5.8G 内置天线,  
RG0.81 黑色单银线 L=40mm, 带 I-PEX  
二代端子, 黑色 FPC 天线

日期 Date: 2023.04.19

备注 Remark: 承认签章后请回复一份（或复印件）给我司，其余由贵公司留作存档。如果在签章的承认书（或复印件）回复给我司之前，下了有关此规格产品的订单且又无特别说明，那么我司就确定贵司已完全承认了。Pleasereturnone specification or one copy of it with your chop and signature of approval and retain the others for your record. In the event of an order being placed for this part number before the chop and signed with specification (or copy) is returned and without special explanation, it will be assumed that full approval have been given.

客户签字盖章:

拟制/日期 CHECKED/DATE	审核/日期 AUDITOR/DATE	批准/日期 APPROVED/DATE



# 规格书

客户料号

Customer P/N:

规格描述

Specification: Antenna, 3.0dBi@2.4G, 4.0dBi@5.8G, 50ohm, RG0.81 黑色单银线 L=40mm, 带 IPEX 二代端子, 黑色 FPC 天线

品名 Description: WIFI 天线

供应商 Supplier: 路恒达

生产商 Producer: 路恒达

备注 Remark:

承认签章后请回复一份（或复印件）给我司，其余由贵公司留作存档。如果在签章的承认书（或复印件）回复给我司之前，下了有关此规格产品的订单且又无特别说明，那么我司就确定贵司已完全承认了。Pleasereturnonespecificationoronecopyofitwithyourchopandsignatureofapprovalandretain the others for your record. In the event of an order being placed for this part number before the chop and signed with specification (or copy) is returned and without special explanation, it will be assumed that full approval have been given.

拟制/日期 CHECKED/DATE	审核/日期 AUDITOR/DATE	批准/日期 APPROVED/DATE
Zhang Bingxiang 2023.04.19	Wu Qianjin 2023.04.19	Luo Daxun 2023.04.19

地址：深圳市龙岗区园山街道大王莘塘工业区 7 栋 2 楼  
电话：

网址：<http://www.luhengda.com>

传真：



## 规格书目录(Directory)

电气参数 (Electrical parameters)	5
机械参数(Mechanical parameters)	5
工作/储存温度 (Operating/ Storage Temperature)	5
结构图纸 (Structural drawings)	6
环境与可靠性试验(Environmental and reliability testing)	7.8
测试设备(Test equipment)	9
测试参数(Testing Parameters)	10



## 履历表 (Resume)

版次号 Revision number	修改章节 Revise chapters	修改页码 modify pages	生效日期 effective date	变更内容 Changes	更改记录人 Change Recorder
V1.0					



--	--	--	--	--	--

## 电气参数 (Electrical parameters) :

<b>Frequency</b> 频率范围	2.4~2.5GHz&5.15~5.85GHz
<b>Impedance</b> 特性阻抗	50Ω
<b>S.W.R.</b> 电压驻波比	≤2.0
<b>Antenna Gain</b> 增益	BT :MAX 3.09dBi 5G WIFI:MAX 4.79dBi
<b>Polarization</b> 极化形式	垂直极化Vertical polarization
<b>Return Loss</b> 回波损耗	-9.2dB MAX

## 机械参数(Mechanical parameters):

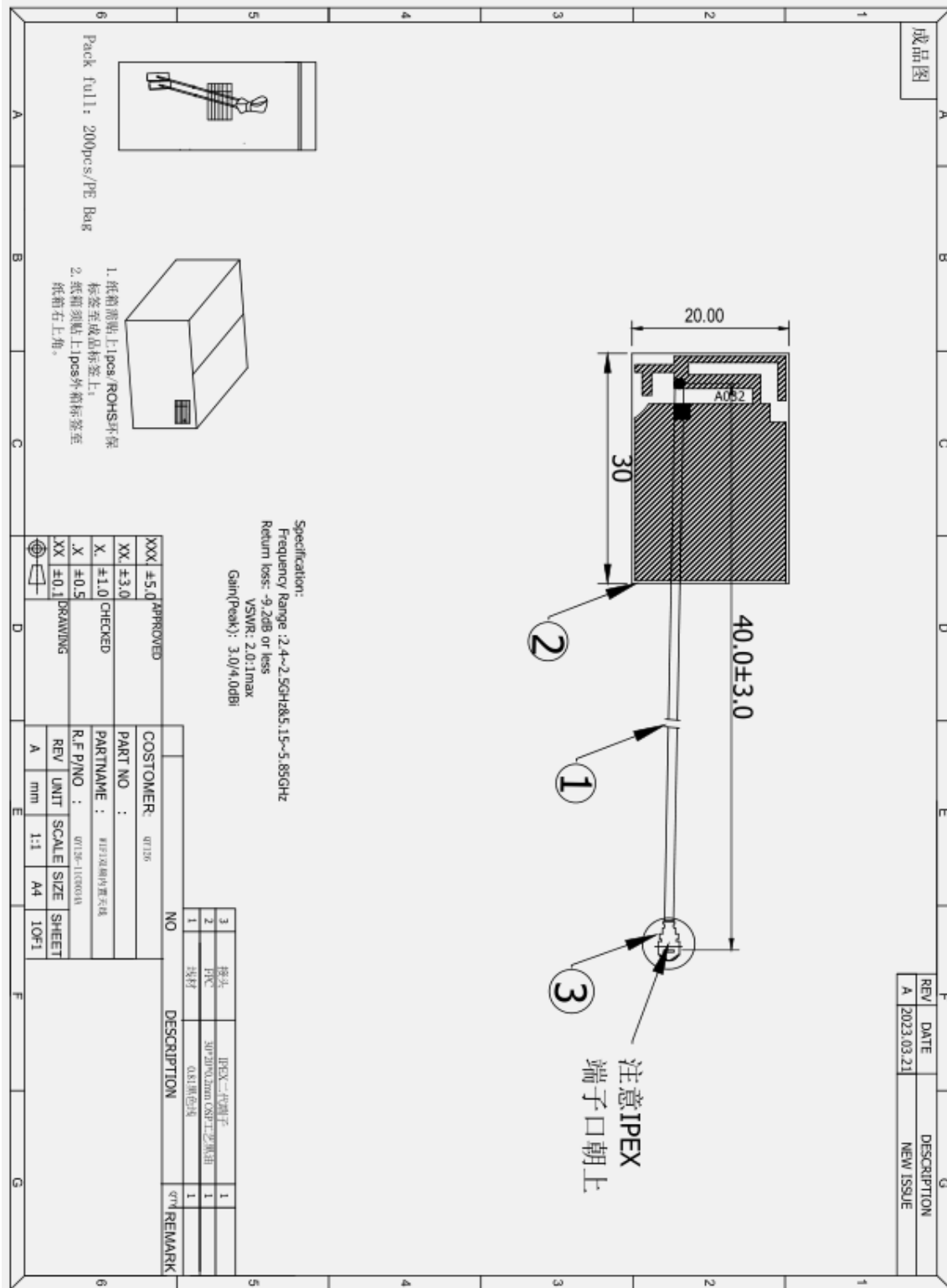
<b>Antenna Colour</b> 天线颜色	黑色black
<b>RF Cable Model</b> 射频线型号	RG0.81, 黑色black
<b>Connect Type</b> 接口方式	I-PEX 二代端子terminal

## 工作/储存温度 (Operating/ Storage Temperature) :

<b>Operating Temperature</b> 工作温度	-40~85℃
<b>Storage Temperature</b> 储存温度	-40~85℃



结构图纸 (Structural drawings):



地址: 深圳市龙岗区园山街道大王莘塘工业区 7 栋 2 楼  
2nd Floor, Building 7, Dawang Xintang Industrial Zone, Yuanshan Street, Longgang District, Shenzhen



**测试设备(Test equipment):**



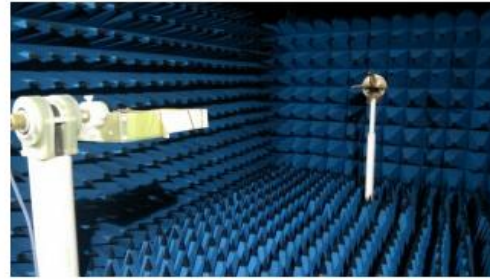
安捷伦 E5071C 网络分析仪



HP 8594E 频谱分析仪



CMW-500

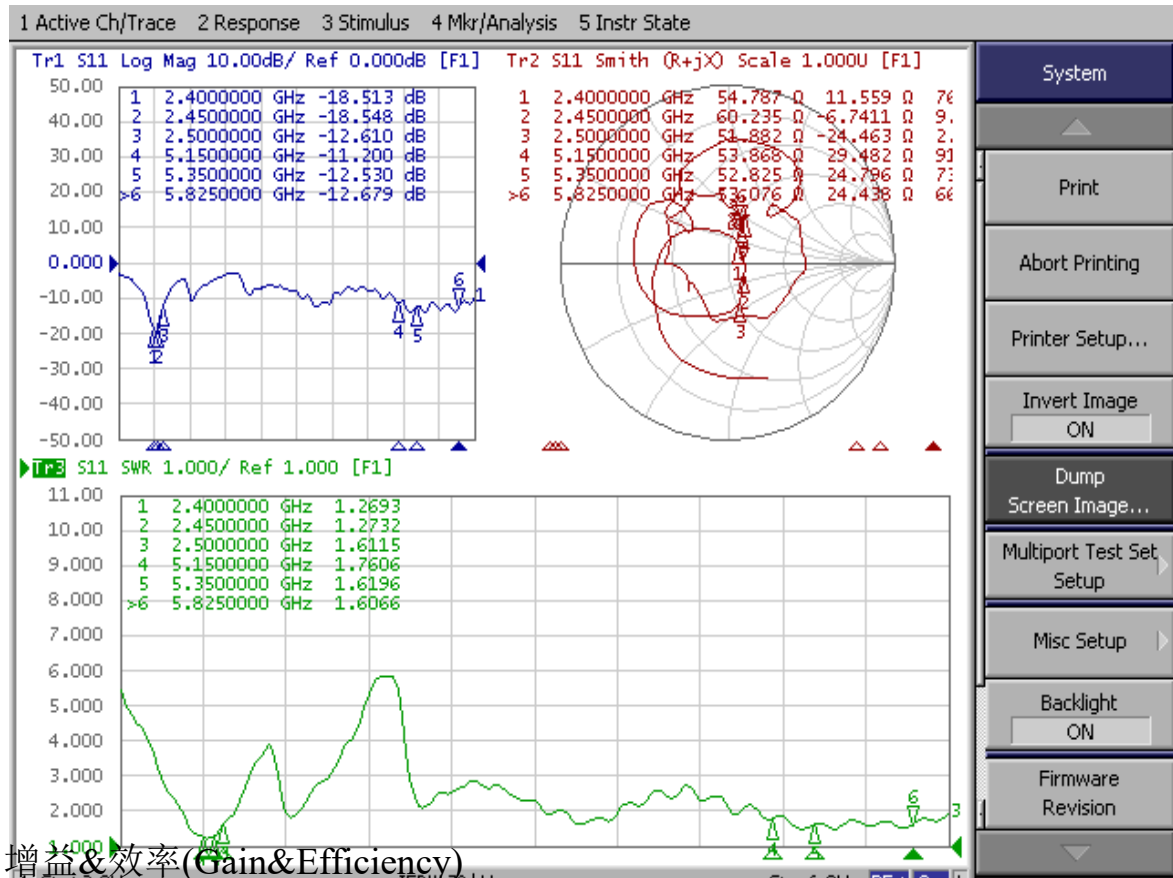


微波暗室



## 测试参数(Testing Parameters)

### V.S.W.R&Return Loss



FEITUKEJI											
Frequency ID	1	2	3	4	5	6	7	8	9	10	11
Frequency (MHz)	2400.0	2410.0	2420.0	2430.0	2440.0	2450.0	2460.0	2470.0	2480.0	2490.0	2500.0
Gain (dBi)	2.52	2.54	2.15	2.93	2.82	3.02	2.98	2.90	3.09	2.68	2.92
Efficiency (%)	46.28	45.23	46.18	47.36	51.27	52.07	51.68	52.99	50.48	49.63	48.61

FEITUKEJI															
Frequency ID	1	2	3	4	5	6	7	8	9	10	11	12	13	14	15
Frequency (MHz)	5150.0	5200.0	5250.0	5300.0	5350.0	5400.0	5450.0	5500.0	5550.0	5600.0	5650.0	5700.0	5750.0	5800.0	5850.0
Gain (dBi)	4.18	4.22	4.79	4.63	3.81	3.64	3.99	4.20	3.91	4.05	4.00	4.15	3.59	3.68	3.78
Efficiency (%)	54.18	51.18	48.58	50.86	50.87	47.95	48.76	47.41	46.38	46.31	49.49	47.79	48.61	49.94	48.49

地址: 深圳市龙岗区园山街道大王莘塘工业区 7 栋 2 楼

2nd Floor, Building 7, Dawang Xintang Industrial Zone, Yuanshan Street, Longgang District, Shenzhen

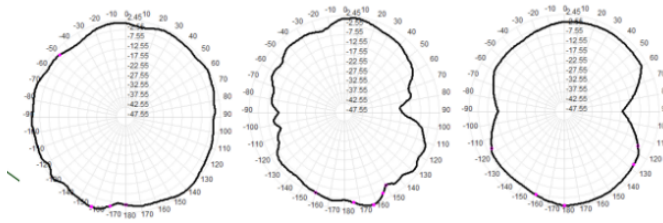




## 2D、3D Radiation Patter

units: dBi

### 2480MHz



### 5825MHz

