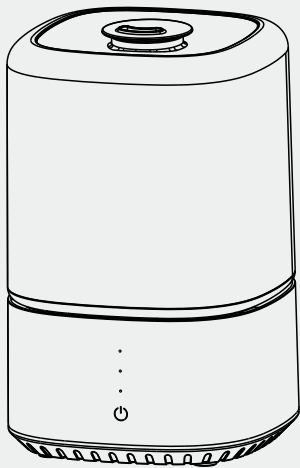


Smart Humidifier

ZH706

User Manual



Thank you for purchasing our air humidifier, please read this instruction carefully before use, please keep this booklet for future reference.

※The pictures are for reference only

Product introduction

Ultrasonic technology is a relatively mature technology in the world,it is widely used in various fields,ultrasonic humidifier adopts ultrasonic high frequency oscillation principle,the water is atomized into 1-5 micron ultrafine particles,the water mist is diffused into the air through the pneumatic device, so as to achieve the purpose of uniformly humidifying the air ,freshing air, moistening skin, improving health.

Product accessories list

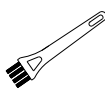
Open the packing carton, please check the carton contains the following accessories.



Product: 1pc



Manual: 1pc



Brush: 1pc

Specification

Model	ZH706
Voltage	AC 100-240V, 50/60Hz
Wattage	25W
Noise Level	≤35dB (A)
Capacity	4.0L
Atomization time	Max mist: 13H
Mist output	150-300mL/H
Net weight	1.05Kgs
Product size	182X182X285(mm)
Executive standard	GB4706. 1-2005 GB4706. 48-2009

Main Features

- Top filling, more convenient;
 - Water shortage protection;
 - Three gear mist adjustment;
 - Sleep mode;
- Spray fine, lasting up to 13 hours;
 - Color changing RGB LED light;
 - Smart App function (optional) .

Safety precautions

In order to ensure safe use,avoid causing you and others to receive injury and property loss,please observe the following safety precautions.

- ⚠ Warning:

Indicates the possibility of serious accident or injury;
- ⚠ Attention:

Indicates possible product damage.

The following conditions are not considered in this product:

- The use of appliances by unattended children and persons with disabilities;
- The product can not be play by children as a toy;
- This product is not suitable for people with physical or mental disabilities and lack of necessary experience and knowledge, unless used under the supervision of someone responsible for its security.

⚠ Warning



Forbidden to disassemble

Non-professional personnel, do not dismantle the machine, so as to avoid electric shock accident!

Do not place the product around a stove or other heat radiation source or inflammable or explosive materials to avoid accidents.

Please do not use wet hands to plug in or out the power to avoid electric shock.

When the machine is turned on, please do not touch the atomizer sheet with hand to avoid hurting.



Prohibition

The power line must not be scratched, damaged, excessively bent, pulled, twisted, knotted, and do not press heavy objects on it or clamped or processed to avoid the risk of electric shock.

Please do not put metal products, chemicals, detergent into the water tank, otherwise there will be poor with atomization problem.

This product is for indoor use only,keep out of reach of children.

⚠ Attention



Prohibition

Please confirm whether the voltage in this city conforms to the specification of the product before use.

The product will produce moisture when working, please keep away from other household electrical appliances.

Do not place the product where it is exposed to strong light or hot air.

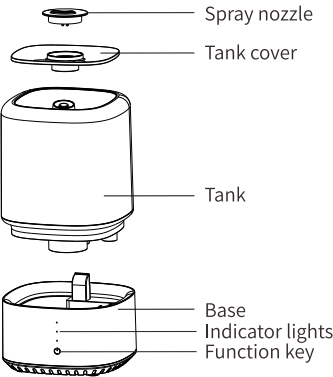
When not in use for a long time, please cut off the power and unplug the power.

When pouring water into the tank, do not exceed the highest water level to prevent water overflowing into the body.

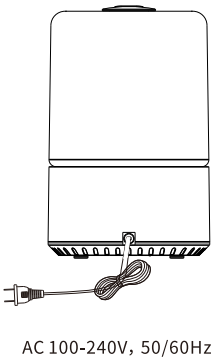
Do not use hard object to knock the surface of the humidifier to prevent the shell from cracking.

Parts

Main engine explosion diagram

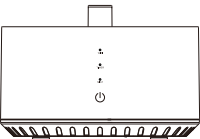


Back of product



Parts

Panel function

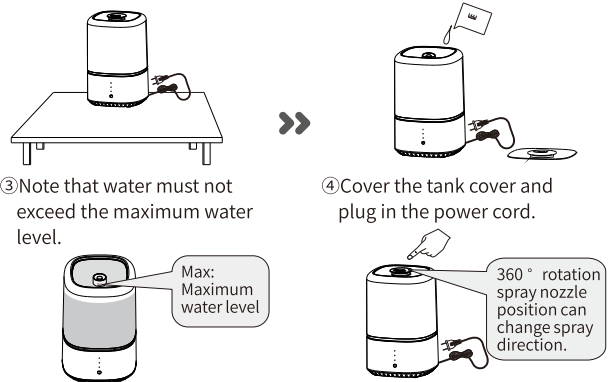


WIFI	WIFI indicator light
TIMER	Timer indicator light
MIST	Mist indicator light
⏻	Function key

Steps for usage

Steps for filling water

- ①The humidifier should be placed on a flat surface.
- ②Open the cover and fill in water, or take up the water tank and take it to the tap to add water.



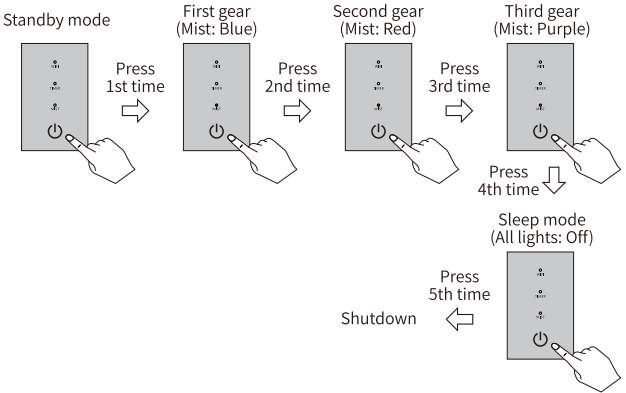
- ③Note that water must not exceed the maximum water level.
- ④Cover the tank cover and plug in the power cord.

Attention

- Mist outlet,water filling is forbidden;
- Can be injected with clean tap water or pure water;
- The water filling position should not exceed the maximum water level.

Operation Steps

- Press repeatedly to switch to the First gear, the Second gear, the Third gear, sleep and shutdown in turn.
- When the machine goes into sleep mode, it will work at the high mode mist output, it will work for 5 minutes, pause for 5 minutes; then work for 5 minutes, pause for 10 minutes; then work for 5 minutes, pause for 15 minutes, work in cycle.

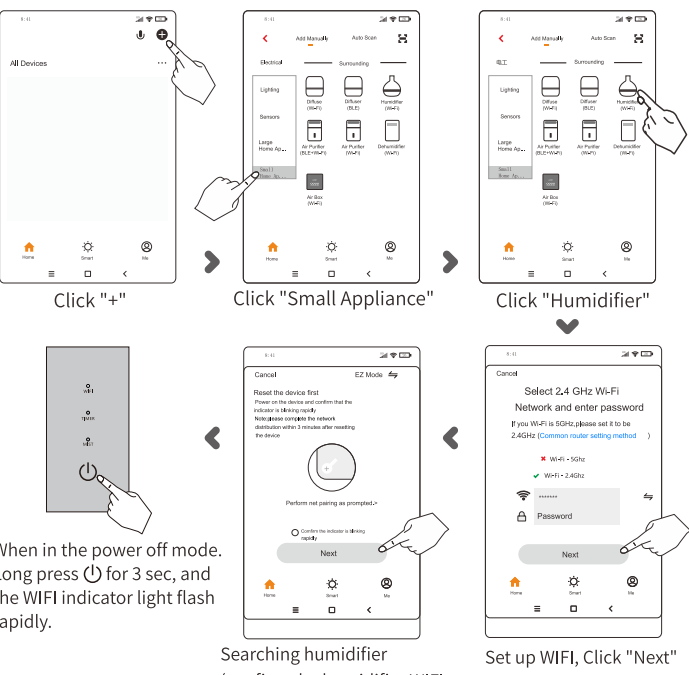


- At the working state, long touch for 3 seconds, the mist indicator light will flash, then enter the RGB light setting mode. Press the key circularly to set 10 RGB light modes(0-9): Gradation(1)-Red(2)-Yellow(3)-Light green(4)-Green(5)-Blue(6)-Dark blue(7)-Purple(8)-White(9)-Off RGB(0)

Steps for usage

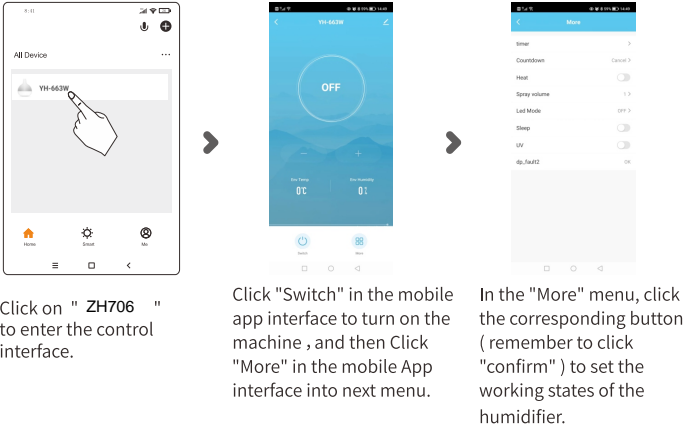
Smart App Function

- The machine has a built-in Wifi module, and the humidifier can be remotely controlled through the Tuya Smart APP control system.
- Download the "Tuya Smart" mobile phone APP and install it on the phone, open the "Tuya Smart" application, and complete the pairing of the smart humidifier according to the mobile phone prompts.
- **Note:** In order to connect more smoothly, you need to turn on the Bluetooth function of your mobile phone at the same time.



When in the power off mode. Long press for 3 sec, and the WIFI indicator light flash rapidly.

Searching humidifier (confirm the humidifier WIFI indicator light flash rapidly), Click "Next"

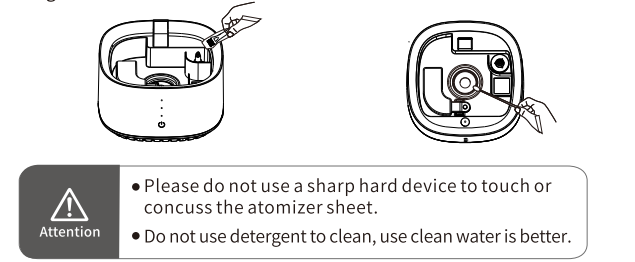


Steps for usage

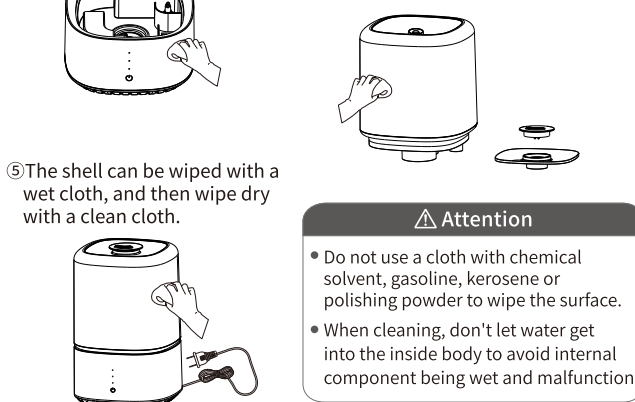
Cleaning/Maintenance

- After appliance is used for a period of time, scale will appear, form "white powder" phenomenon; it is attached to the surface of the transducer, affecting the humidification effect. It is necessary to clean the main components of humidifier regularly.

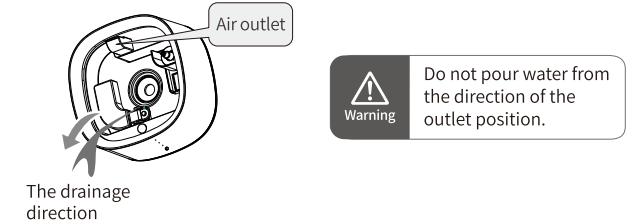
- ①Add proper amount of water, clean the machine with cleaning brush.
- ②Wipe the atomizer with a cotton swab stuck with citric acid solution.



- ③Rinse with water and wipe clean with a soft cloth.
- ④Remove the upper cover and spray nozzle in turn, wash them with water, and then wipe them with a soft wet cloth. (It can be washed in water)



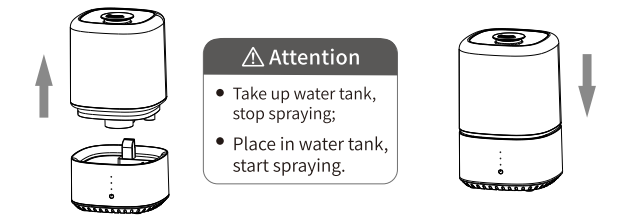
Instruction of pouring water



Steps for usage

Notices

- This machine is with water tank detection function. When the machine is working, it will stop spraying when taking up the water tank. After the water tank is placed in, the machine will spray again automatically.
- When there is water shortage in the sink, the Mist indicator light will flash, the mist indicator light goes out after 5 seconds.



Troubleshooting

If your humidifier does not work properly, please check the following before requesting after-sales service.

Fault phenomenon	Cause Analysis	Method of exclusion
No display	The power plug is not plugged in	Plug in the power cord and turn on the power
There is water in the sink. When it is on, it does not spray mist or mist is in low level.	There is too much scale on the atomizer sheet	Clean the scale on the atomizer sheet
Abnormal mist	1.To much scale on he atomizer sheet; 2.Water is dirty or water is stored for a long time	1.Clean the atomizer sheet 2.Replace clean water;
Abnormal noise	1.To less water in the atomizing sink 2.Resonate with the desktop	1.Add water 2.Placed on a firm and stable desk
Fog overflows from the tank cover	The tank is not in place or there is debris in the water	Place the tank smoothly, refill some clean water
The sprayed mist has an odor	Water is not clean and it has been left for too long	Clean the sink, dry it, and replace it with clean water

This device complies with part 15 of the FCC Rules. Operation is subject to the following two conditions: (1) This device may not cause harmful interference, and (2) this device must accept any interference received, including interference that may cause undesired operation.

Any Changes or modifications not expressly approved by the party responsible for compliance could void the user's authority to operate the equipment.

Note: This equipment has been tested and found to comply with the limits for a Class B digital device, pursuant to part 15 of the FCC Rules. These limits are designed to provide reasonable protection against harmful interference in a residential installation. This equipment generates uses and can radiate radio frequency energy and, if not installed and used in accordance with the instructions, may cause harmful interference to radio communications. However, there is no guarantee that interference will not occur in a particular installation. If this equipment does cause harmful interference to radio or television reception, which can be determined by turning the equipment off and on, the user is encouraged to try to correct the interference by one or more of the following measures:

- Reorient or relocate the receiving antenna.
- Increase the separation between the equipment and receiver.
- Connect the equipment into an outlet on a circuit different from that to which the receiver is connected.
- Consult the dealer or an experienced radio/TV technician for help.

This equipment complies with FCC radiation exposure limits set forth for an uncontrolled environment. This equipment should be installed and operated with minimum distance 20cm between the radiator & your body.