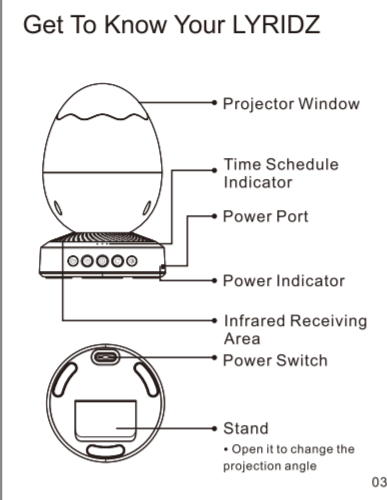


Contents

English 02-12
 Deutsch 13-18
 日本語 19-24



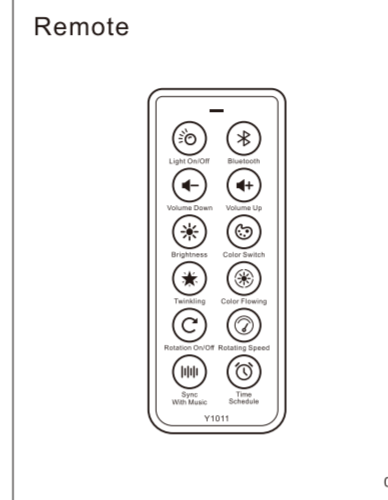
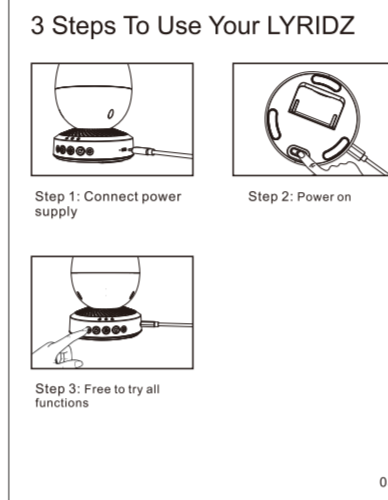
Color Switch
 Tap once to switch the color
 Touch and hold to turn on or off the Color Moving function

Start/Stop Button
 Press once to turn on or off the light
 Press and hold to turn on or off the bluetooth

Time Schedule
 Press to turn on or off the 30min, 60min, 120min auto-off timer

Rotation On/Off
 Press once to turn on or off rotation

Brightness Adjustment
 Tap once to adjust the brightness



Specifications

Material	ABS+PC
Light Source	LED
Input	5V/1A
Power	5W
Dimensions	109*109*168 mm 4.29*4.29*6.62 in
Weight	A5418 308g/10.86 oz A5419 315g/11.11 oz

Important Safety Information

To ensure correct and safe installation, function of the product, please follow below instructions and keep this booklet for future reference.

- Do not use light around water. Avoid liquids on all electrical parts.
- Clean only with a dry, soft cloth. Household cleaners or solvents can damage your light.
- Do not install your light near any heat sources, such as radiators, heat registers, stoves, or any other apparatus that produces heat.
- Do not block any ventilation openings.
- To reduce the risk of fire or electric shock, do not expose this light to rain or moisture.
- Keep packaging materials (e.g. plastic bags) out of children's reach.
- Not suitable for children under 36 months. Small parts has choking hazard.
- Do not stare at the operating light source.

FCC Information

This device complies with Part 15 of the FCC Rules. Operation is subject to the following two conditions: (1) this device may not cause harmful interference, and (2) this device must accept any interference received, including interference that may cause undesired operation.

Note: This equipment has been tested and found to comply with the limits for a Class B digital device, pursuant to part 15 of the FCC Rules. These limits are designed to provide reasonable protection against harmful interference in a residential installation. This equipment generates, uses, and can radiate radio frequency energy and, if not installed and used in accordance with the instructions, may cause harmful interference to radio communications. However, there is no guarantee that interference will not occur in a particular installation. If this equipment does cause harmful interference to radio or television reception, which can be determined by turning the equipment off and on, the user is encouraged to try to correct the interference by one of the following measures:

- Reorient or relocate the receiving antenna.
- Increase the separation between the equipment and receiver.
- Connect the equipment into an outlet on a circuit different from that to which the receiver is connected.
- Consult the dealer or an experienced radio/TV technician for help.

This device should be installed and operated with minimum distance 0.3m between the radiator and your body.

Warning:
 Changes or modifications to this unit not expressly approved by the party responsible for compliance could void the user authority to operate the equipment.

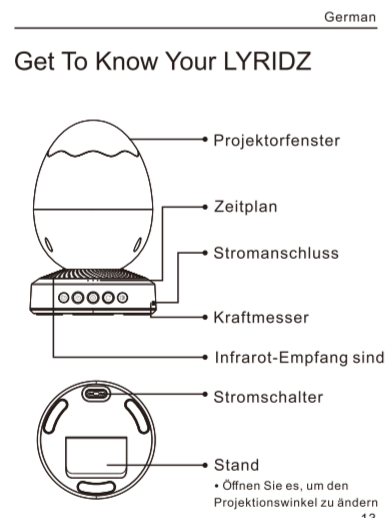
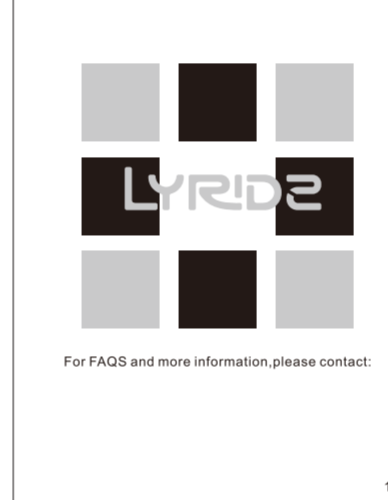
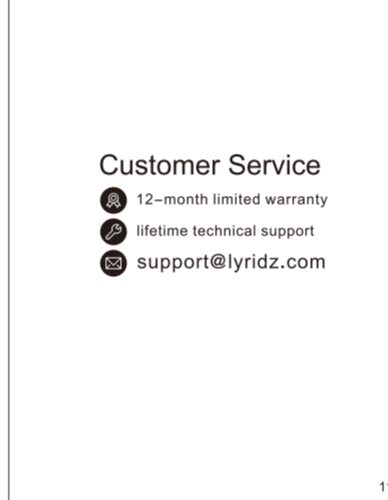
This LYRIDZ projector light is fully compliant with the EU, CA, JP, UK and USA legislation.

When disposing this equipment, please protect our environment by means of proper disposal. Your local authorities will have special return and disposal facilities available for you.

Linkfar Healthcare GmbH Niederrheinstraße 71, 40474 Düsseldorf Germany
 Sea&Mew Accounting Ltd 10 Duke Street, Coventry CV5 8BZ
 CAN ICES-3(B)/NMB-3(B)
 Made in China Model: A5418/A5419

Customer Service

- 12-month limited warranty
- lifetime technical support
- support@lyridz.com



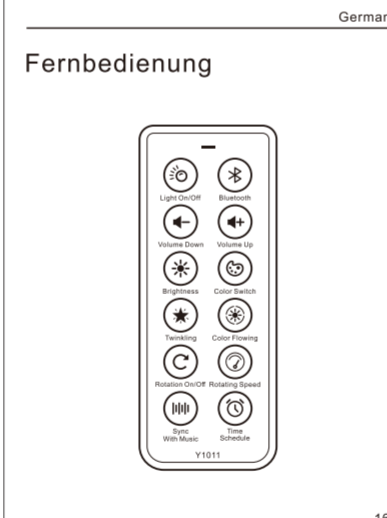
Farbschalter
 Tippen Sie einmal, um die Farbe zu wechseln
 Berühren und halten, um die Farbewechsel-funktion ein- oder auszuschalten

Start/Stopp-Taste
 Einmal drücken, um das Licht ein- oder auszuschalten
 Gedrückt halten, um Bluetooth ein- oder auszuschalten

Zeitplan
 Drücken Sie diese Taste, um den 30-Minuten-, 60-Minuten-, 120-Minuten-Auto-Off-Timer ein- oder auszuschalten

Rotation ein/aus
 Einmal drücken, um die Drehung ein- oder auszuschalten

Helligkeit einstellbar
 Tippen Sie einmal, um das Licht zu dimmen



Spezifikationen

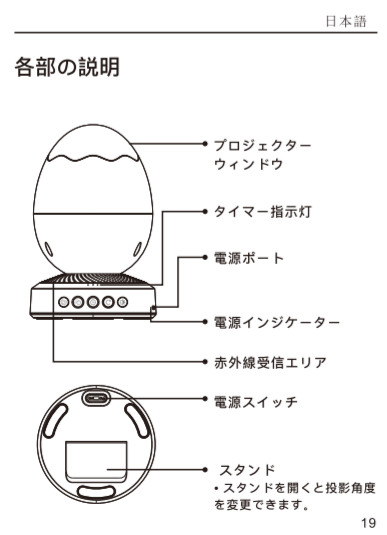
Material	ABS+PC
Lichtquelle	LED
Eingang	5V/1A
Leistung	5W
Maße	109*109*168 mm 4.29*4.29*6.62 in
Gewicht	A5418 308g/10.86 oz A5419 315g/11.11 oz

Warnung
 Änderungen oder Modifikationen an dieser Einheit, die nicht ausdrücklich von der für die Einhaltung verantwortlichen Partei genehmigt wurden, würden die Benutzerberechtigung zur Verwendung der Geräte widerrufen.

Linkfar Healthcare GmbH Niederrheinstraße 71, 40474 Düsseldorf Germany
 Sea&Mew Accounting Ltd 10 Duke Street, Coventry CV5 8BZ
 CAN ICES-3(B)/NMB-3(B)
 Made in China Model: A5418/A5419

Kundendienst

- 12 Monate eingeschränkte Garantie
- lebenslange pädagogische Unterstützung
- support@lyridz.com



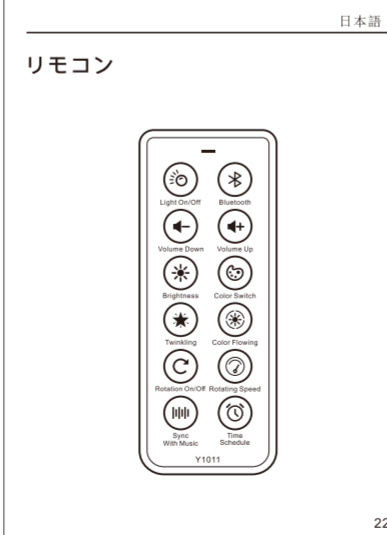
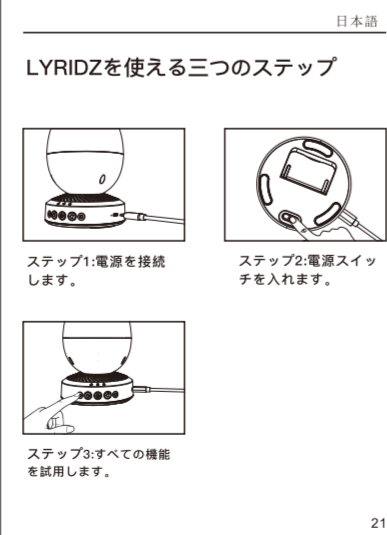
カラーボタン
 1回タッチすると、カラーを選択できます
 ロングタッチすると、自動変色機能をオンまたはオフにします。

スタート/ストップボタン
 1回押すと、ライトをオンまたはオフにします。
 長押しすると、フルタイムをオンまたはオフにします。

タイマー機能
 タイマーボタンを押して30分・60分・120分のタイミングを設定できます。

回転ボタン
 1回押すと、回転をオンまたはオフにします。

調光ボタン
 1回タッチすると、調光できます。



製品の仕様

材質	ABS+PC
光源	LED
入力	5V/1A
消費電力	5W
サイズ	109*109*168 mm 4.29*4.29*6.62 in
重量	A5418 308g/10.86 oz A5419 315g/11.11 oz

ご注意
 修理技術者以外は、絶対に分解、修理、改造を行わないでください。

Linkfar Healthcare GmbH Niederrheinstraße 71, 40474 Düsseldorf Germany
 Sea&Mew Accounting Ltd 10 Duke Street, Coventry CV5 8BZ
 CAN ICES-3(B)/NMB-3(B)
 中国製 型番: A5418/A5419

カスタマーサービス

- 12ヶ月保証期間
- 生涯技術サポート
- support@lyridz.com

V1	DATE	ONLINE	
	2021/12/15	Product Name	Motion Sensor Table Lamp 1
1506000039	SCALE	1:1	
	REMARK	说明书	

IC warning

This device complies with Industry Canada licence-exempt RSS standard(s).

Operation is subject to the following two conditions:

(1) This device may not cause interference and (2) this device must accept any interference, including interference that may cause undesired operation of the device.

Le présent appareil est conforme aux CNR d'Industrie Canada applicables aux appareils radio exempts de licence. L'exploitation est autorisée aux deux conditions suivantes :

(1) l'appareil ne doit pas produire de brouillage, et

(2) l'utilisateur de l'appareil doit accepter tout brouillage radioélectrique subi, même si le brouillage est susceptible d'en compromettre le fonctionnement.

Under Industry Canada regulations, this radio transmitter may only operate using an antenna of a type and maximum (or lesser) gain approved for the transmitter by Industry Canada. To reduce potential radio interference to other users, the antenna type and its gain should be so chosen that the equivalent isotropically radiated power (e.i.r.p.) is not more than that necessary for successful communication.

Conformément à la réglementation d'Industrie Canada, le présent émetteur radio peut fonctionner avec une antenne d'un type et d'un gain maximal (ou inférieur) approuvé pour l'émetteur par Industrie Canada. Dans le but de réduire les risques de brouillage radioélectrique à l'intention des autres utilisateurs, il faut choisir le type d'antenne et son gain de sorte que la puissance isotrope rayonnée équivalente (p.i.r.e.) ne dépasse pas l'intensité nécessaire à l'établissement d'une communication satisfaisante.

This radio transmitter (identify the device by certification number, or model number if Category II) has been approved by Industry Canada to operate with the antenna types listed below with the maximum permissible gain and required antenna impedance for each antenna type indicated. Antenna types not included in this list, having a gain greater than the maximum gain indicated for that type, are strictly prohibited for use with this device.

Le présent émetteur radio (identifier le dispositif par son numéro de certification ou son numéro de modèle s'il fait partie du matériel de catégorie I) a été approuvé par Industrie Canada pour fonctionner avec les types d'antenne énumérés ci-dessous et ayant un gain admissible maximal et l'impédance requise pour chaque type d'antenne. Les types d'antenne non inclus dans cette liste, ou dont le gain est supérieur au gain maximal indiqué, sont strictement interdits pour l'exploitation de l'émetteur.

The minimum separation generally be used is at least 0 cm.

La distance minimale généralement utilisée est d'au moins 0 cm.