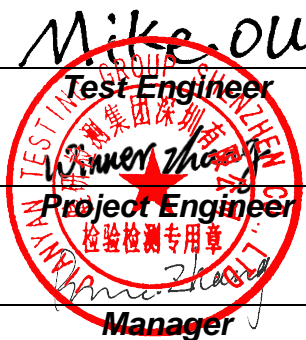


FCC EMC Test Report

Applicant: NU-ERA TELECOMMUNICATIONS INC
Address of Applicant: 848 Brickell Av. Suite 1015, Miami, Florida, United States 33131
Equipment Under Test (EUT)
Product Name: Tablet
Model No.: X8Max
Trade Mark: XMOBILE
FCC ID: 2A5WBXMOX8MX
Applicable Standards: FCC CFR Title 47 Part 15B
Date of Sample Receipt: 01 Dec., 2022
Date of Test: 02 Dec., to 29 Dec., 2022
Date of report Issued: 30 Dec., 2022
Test Result: PASS

Tested by: Mike Ou **Date:** 30 Dec., 2022
Reviewed by: Winner Zhao **Date:** 30 Dec., 2022
Approved by: Manager **Date:** 30 Dec., 2022



This equipment has been shown to be capable of compliance with the applicable technical standards as indicated in the measurement report and was tested in accordance with the measurement procedures specified in above the application standard version. Test results reported herein relate only to the item(s) tested.

This document cannot be reproduced except in full, without prior written approval of the Company. Any unauthorized alteration, forgery or falsification of the content or appearance of this document is unlawful and offenders may be prosecuted to the fullest extent of the law. Unless otherwise stated the results shown in this test report refer only to the sample(s) tested and such sample(s) are retained for 90 days only.

1 Version

Version No.	Date	Description
00	30 Dec., 2022	Original

2 Contents

Page

Cover Page	1
1 Version	2
2 Contents.....	3
3 General Information.....	4
3.1 Client Information	4
3.2 General Description of E.U.T.	4
3.3 Test Mode	4
3.4 Description of Test Auxiliary Equipment	5
3.5 Description of Cable Used.....	5
3.6 Measurement Uncertainty	5
3.7 Additions to, Deviations, or Exclusions from the Method.....	5
3.8 Laboratory Facility	5
3.9 Laboratory Location.....	5
3.10 Test Instruments List	6
4 Measurement Setup and Procedure	7
4.1 Test Setup	7
4.2 Test Procedure	8
5 Test Results.....	9
5.1 Summary	9
5.1.1 Clause and data summary	9
5.1.2 Test Limit.....	9
5.2 Conducted Emission	10
5.3 Radiated Emission	12

3 General Information

3.1 Client Information

Applicant:	NU-ERA TELECOMMUNICATIONS INC
Address:	848 Brickell Av. Suite 1015, Miami, Florida, United States 33131
Manufacturer:	NU-ERA TELECOMMUNICATIONS INC
Address:	848 Brickell Av. Suite 1015, Miami, Florida, United States 33131

3.2 General Description of E.U.T.

Product Name:	Tablet
Model No.:	X8Max
Power Supply:	Rechargeable Li-ion Battery DC3.85V, 4000mAh
AC Adapter:	Input: AC100-240V, 50/60Hz, 0.3A Output: DC 5.0V, 1500mA
Test Sample Condition:	The test samples were provided in good working order with no visible defects.

3.3 Test Mode

Operating Mode	Detail Description
PC mode	Keep the EUT in Downloading mode (Worst case)
Charging+Recording mode	Keep the EUT in Charging+Recording mode
Charging+Playing mode	Keep the EUT in Charging+Playing mode
FM mode	Keep the EUT in FM receiver mode
GPS mode	Keep the EUT in GPS receiver mode

The sample was placed 0.8m above the ground plane of 3m chamber. Measurements in both horizontal and vertical polarities were performed. During the test, each emission was maximized by: having the EUT continuously working, investigated all operating modes, rotated about all 3 axis (X, Y & Z) and considered typical configuration to obtain worst position, manipulating interconnecting cables, rotating the turntable, varying antenna height from 1m to 4m in both horizontal and vertical polarizations. The emissions worst-case are shown in Test Results of the following pages.

3.4 Description of Test Auxiliary Equipment

Manufacturer	Description	Model	S/N	FCC ID/DoC
Lenovo	Laptop	ThinkPad T14 Gen 1	SL10Z47277	DoC

3.5 Description of Cable Used

Cable Type	Description	Length	From	To
Detached USB Cable	Shielding	1.04m	EUT	PC/Adapter

3.6 Measurement Uncertainty

Parameter	Expanded Uncertainty (Confidence of 95%(U = 2Uc(y)))
Conducted Emission for LISN (9kHz ~ 10MHz)	1.9 dB
Conducted Emission for LISN (10MHz ~ 30MHz)	2.6 dB
Radiated Emission (30MHz ~ 1GHz) (3m SAC)	3.8 dB
Radiated Emission (1GHz ~ 18GHz) (3m SAC)	3.6 dB
Radiated Emission (30MHz ~ 1GHz) (10m SAC)	3.7 dB

Note: All the measurement uncertainty value were shown with a coverage $k=2$ to indicate 95% level of confidence. The measurement data show herein meets or exceeds the CISPR measurement uncertainty values specified in CISPR 16-4-2 and can be compared directly to specified limit to determine compliance.

3.7 Additions to, Deviations, or Exclusions from the Method

No

3.8 Laboratory Facility

The test facility is recognized, certified, or accredited by the following organizations:

- **FCC - Designation No.: CN1211**

JianYan Testing Group Shenzhen Co., Ltd. has been accredited as a testing laboratory by FCC(Federal Communications Commission). The test firm Registration No. is 727551.

- **ISED – CAB identifier.: CN0021**

The 3m Semi-anechoic chamber and 10m Semi-anechoic chamber of JianYan Testing Group Shenzhen Co., Ltd. has been Registered by Certification and Engineering Bureau of Industry Canada for radio equipment testing with Registration No.: 10106A-1.

- **CNAS - Registration No.: CNAS L15527**

JianYan Testing Group Shenzhen Co., Ltd. is accredited to ISO/IEC 17025:2017 General Requirements for the Competence of Testing and Calibration laboratories for the competence of testing. The Registration No. is CNAS L15527.

- **A2LA - Registration No.: 4346.01**

This laboratory is accredited in accordance with the recognized International Standard ISO/IEC 17025:2017 General requirements for the competence of testing and calibration laboratories. The test scope can be found as below link: <https://portal.a2la.org/scopepdf/4346-01.pdf>

3.9 Laboratory Location

JianYan Testing Group Shenzhen Co., Ltd.

Address: No.101, Building 8, Innovation Wisdom Port, No.155 Hongtian Road, Huangpu Community, Xinqiao Street, Bao'an District, Shenzhen, Guangdong, People's Republic of China.

Tel: +86-755-23118282, Fax: +86-755-23116366

Email: info-JYTee@lets.com, Website: <http://jyt.lets.com>

3.10 Test Instruments List

Radiated Emission(3m SAC):					
Test Equipment	Manufacturer	Model No.	Manage No.	Cal. Date (mm-dd-yy)	Cal. Due date (mm-dd-yy)
3m SAC	ETS	9m*6m*6m	WXJ001-1	04-14-2021	04-13-2024
BiConiLog Antenna	Schwarzbeck	VULB9163	WXJ002	03-08-2022	03-07-2023
Horn Antenna	Schwarzbeck	BBHA9120D	WXJ002-2	03-08-2022	03-07-2023
Pre-amplifier (30MHz ~ 1GHz)	Schwarzbeck	BBV9743B	WXJ001-2	01-20-2022	01-19-2023
Pre-amplifier (1GHz ~ 18GHz)	SKET	LNPA_0118G-50	WXJ001-3	01-20-2022	01-19-2023
EMI Test Receiver	Rohde & Schwarz	ESRP7	WXJ003-1	03-05-2022	03-04-2023
Spectrum Analyzer	Rohde & Schwarz	FSP 30	WXJ004	01-20-2022	01-19-2023
Coaxial Cable (30MHz ~ 1GHz)	JYTSZ	JYT3M-1G-NN-8M	WXG001-4	01-20-2022	01-19-2023
Coaxial Cable (1GHz ~ 18GHz)	JYTSZ	JYT3M-18G-NN-8M	WXG001-5	01-20-2022	01-19-2023
Band Reject Filter Group	Tonscend	JS0806-F	WXJ089	N/A	
Test Software	Tonscend	TS+	Version: 3.0.0.1		

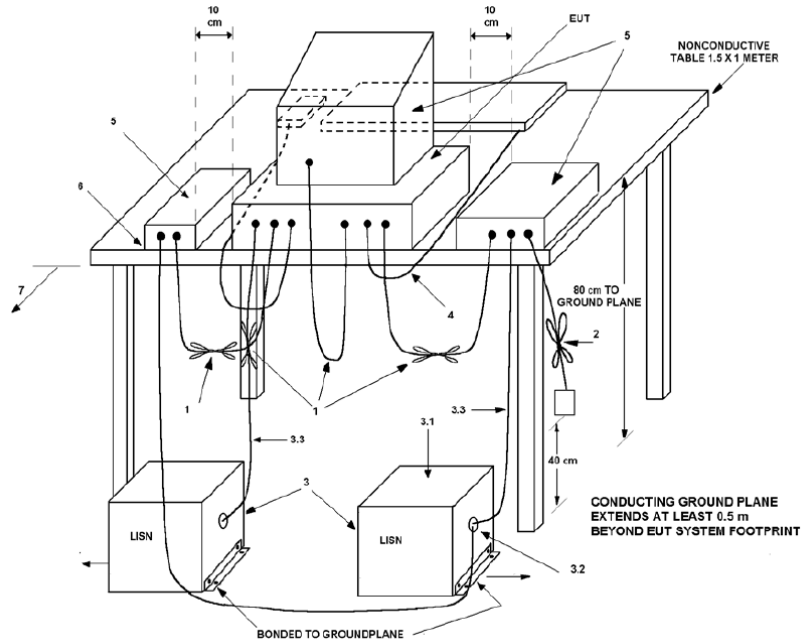
Radiated Emission(10m SAC):					
Test Equipment	Manufacturer	Model No.	Manage No.	Cal. Date (mm-dd-yy)	Cal. Due date (mm-dd-yy)
10m SAC	ETS	RFSD-100-F/A	WXJ090	04-28-2021	04-27-2024
BiConiLog Antenna	SCHWARZBECK	VULB 9168	WXJ090-1	04-01-2022	03-31-2023
BiConiLog Antenna	SCHWARZBECK	VULB 9168	WXJ090-2	03-31-2022	03-30-2023
EMI Test Receiver	R&S	ESR 3	WXJ090-3	03-30-2022	03-29-2023
EMI Test Receiver	R&S	ESR 3	WXJ090-4	03-30-2022	03-29-2023
Low Pre-amplifier	Bost	LNA 0920N	WXJ090-6	01-20-2022	01-19-2023
Low Pre-amplifier	Bost	LNA 0920N	WXJ090-7	01-20-2022	01-19-2023
Cable	Bost	JYT10M-1G-NN-10M	WXG002-7	01-20-2022	01-19-2023
Cable	Bost	JYT10M-1G-NN-10M	WXG002-8	01-20-2022	01-19-2023
Test Software	R&S	EMC32	Version: 10.50.40		

Conducted Emission:					
Test Equipment	Manufacturer	Model No.	Manage No.	Cal. Date (mm-dd-yy)	Cal. Due date (mm-dd-yy)
EMI Test Receiver	Rohde & Schwarz	ESR3	WXJ003-2	07-12-2022	07-11-2023
LISN	Schwarzbeck	NSLK 8127	QCJ001-13	02-24-2022	02-23-2023
LISN	Rohde & Schwarz	ESH3-Z5	WXJ005-1	03-30-2022	03-29-2023
LISN Coaxial Cable (9kHz ~ 30MHz)	JYTSZ	JYTCE-1G-NN-2M	WXG003-1	02-24-2022	02-23-2023
RF Switch	TOP PRECISION	RSU0301	WXG003	N/A	
Test Software	AUDIX	E3	Version: 6.110919b		

4 Measurement Setup and Procedure

4.1 Test Setup

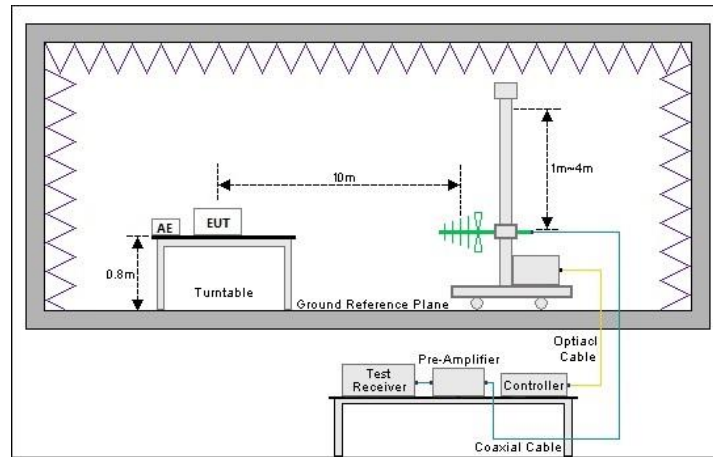
1) Conducted emission measurement:



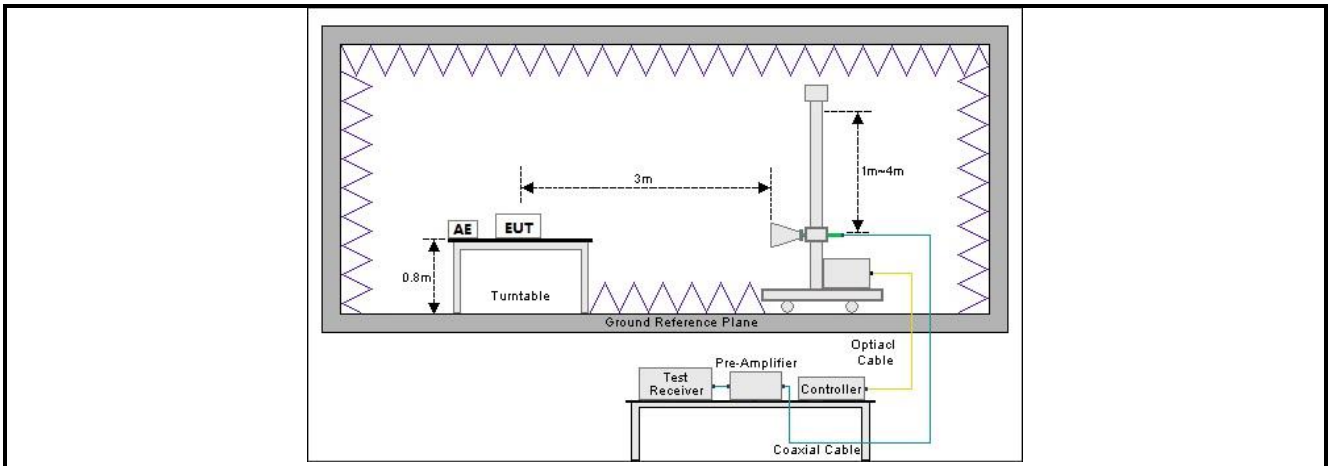
Note: The detailed descriptions please refer to Figure 8 of ANSI C63.4:2014.

2) Radiated emission measurement:

Below 1GHz (10m SAC)



Above 1GHz (3m SAC)



4.2 Test Procedure

Test method	Test step
Conducted emission	<ol style="list-style-type: none"> The E.U.T and simulators are connected to the main power through a line impedance stabilization network (L.I.S.N.). This provides a 50ohm/50uH coupling impedance for the measuring equipment. The peripheral devices are also connected to the main power through a LISN that provides a 50ohm/50uH coupling impedance with 50ohm termination. (Please refer to the block diagram of the test setup and photographs). Both sides of A.C. line are checked for maximum conducted interference. In order to find the maximum emission, the relative positions of equipment and all of the interface cables must be changed according to ANSI C63.4 on conducted measurement.
Radiated emission	<p>For below 1GHz:</p> <ol style="list-style-type: none"> The EUT was placed on the tabletop of a rotating table 0.8 m the ground at a 10 m semi anechoic chamber. The measurement distance from the EUT to the receiving antenna is 10 m. EUT works in each mode of operation that needs to be tested, and having the EUT continuously working, respectively on 3 axis (X, Y & Z) and considered typical configuration to obtain worst position. The highest signal levels relative to the limit shall be determined by rotating the EUT from 0° to 360° and with varying the measurement antenna height between 1 m and 4 m in vertical and horizontal polarizations. Open the test software to control the test antenna and test turntable. Perform the test, save the test results, and export the test data. <p>For above 1GHz:</p> <ol style="list-style-type: none"> The EUT was placed on the tabletop of a rotating table 0.8 m the ground at a 3 m fully anechoic room. The measurement distance from the EUT to the receiving antenna is 3 m. EUT works in each mode of operation that needs to be tested, and having the EUT continuously working, respectively on 3 axis (X, Y & Z) and considered typical configuration to obtain worst position. The highest signal levels relative to the limit shall be determined by rotating the EUT from 0° to 360° and with varying the measurement antenna height between 1 m and 4 m in vertical and horizontal polarizations. Open the test software to control the test antenna and test turntable. Perform the test, save the test results, and export the test data.

5 Test Results

5.1 Summary

5.1.1 Clause and data summary

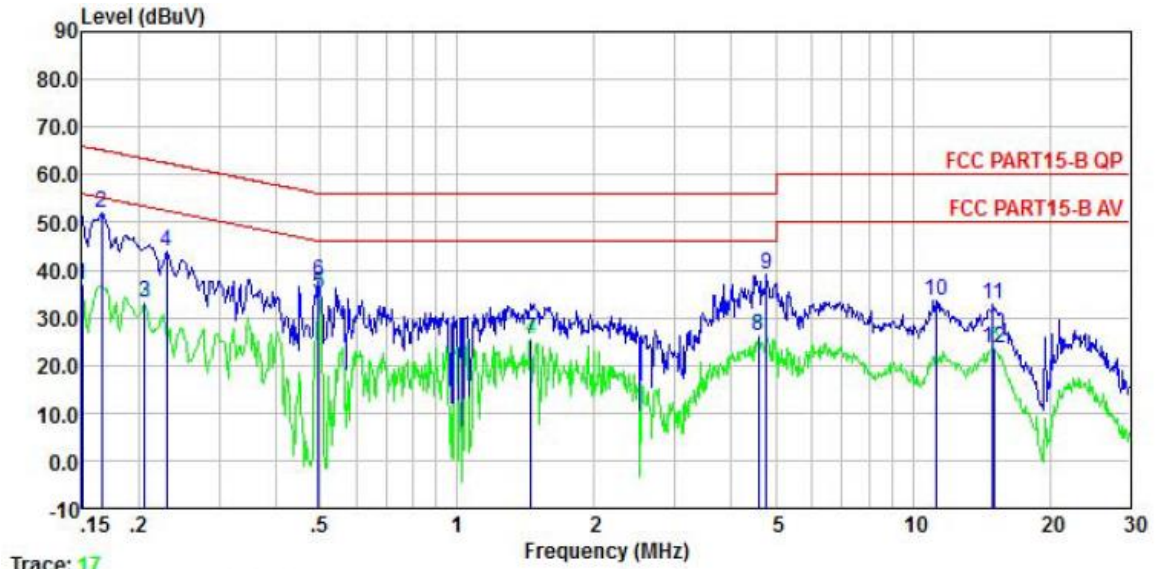
Test items	Standard clause	Test data	Result
Conducted Emission	Part 15.107	See Section 5.2	Pass
Radiated Emission	Part 15.109	See Section 5.3	Pass
Remark: 1. The EUT is a Class B digital device. 2. Pass: The EUT complies with the essential requirements in the standard. 3. N/A: Not Applicable.			
Test Method:	ANSI C63.4:2014		

5.1.2 Test Limit

Test items	Limit					
Conducted Emission	Frequency (MHz)	Class A Limit (dB μ V)		Class B Limit (dB μ V)		
		Quasi-Peak	Average	Quasi-Peak	Average	
	0.15 – 0.5	79	66	66 to 56 <small>Note 1</small>	56 to 46 <small>Note 1</small>	
	0.5 – 5	73	60	56	46	
	5 – 30	73	60	60	50	
Note 1: The limit level in dB μ V decreases linearly with the logarithm of frequency. Note 2: The more stringent limit applies at transition frequencies.						
Radiated Emission	Frequency (MHz)	Class A Limit (dB μ V/m)		Class B Limit (dB μ V/m)		
		Quasi-Peak @ 3m	Quasi-Peak @ 10m	Quasi-Peak @ 3m	Quasi-Peak @ 10m	
	30 – 88	49.0	39.0	40.0	30.0	
	88 – 216	53.5	43.5	43.5	33.5	
	216 – 960	56.0	46.0	46.0	36.0	
	960 – 1000	60.0	50.0	54.0	44.0	
	Note: The more stringent limit applies at transition frequencies.					
	Frequency	Class A Limit (dB μ V/m) @ 3m		Class B Limit (dB μ V/m) @ 3m		
		Average	Peake	Average	Peake	
	Above 1 GHz	60.0	80.0	54.0	74.0	
Note: The measurement bandwidth shall be 1 MHz or greater.						

5.2 Conducted Emission

Product name:	Tablet	Product model:	X8Max
Test by:	Mike	Test mode:	PC mode
Test frequency:	150 kHz ~ 30 MHz	Phase:	Line
Test voltage:	AC 120 V/60 Hz		



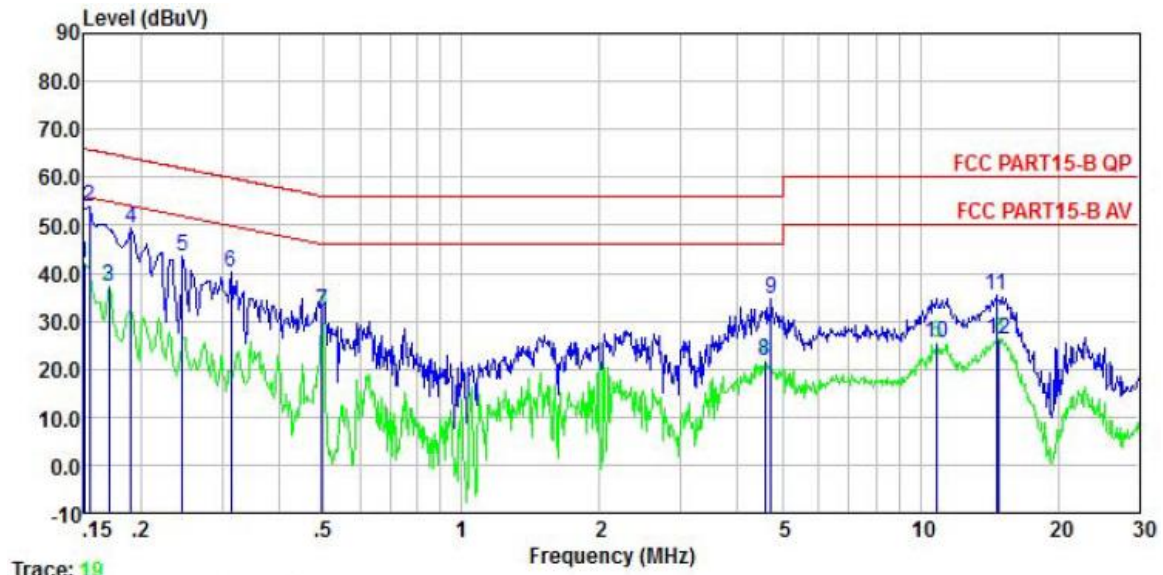
Trace: 17

	Read Freq	Read Level	LISN Factor	Aux2 Factor	Cable Loss	Level	Limit Line	Over Limit	Remark
	MHz	dBuV	dB	dB	dB	dBuV	dBuV	dB	
1	0.150	26.30	0.04	10.50	0.01	36.85	56.00	-19.15	Average
2	0.166	41.62	0.04	10.50	0.01	52.17	65.16	-12.99	QP
3	0.206	22.64	0.05	10.50	0.04	33.23	53.36	-20.13	Average
4	0.230	33.13	0.05	10.50	0.02	43.70	62.44	-18.74	QP
5	0.497	24.42	0.05	10.50	0.03	35.00	46.05	-11.05	Average
6	0.497	27.12	0.05	10.50	0.03	37.70	56.05	-18.35	QP
7	1.449	14.79	0.08	10.50	0.13	25.50	46.00	-20.50	Average
8	4.574	15.49	0.11	10.50	0.09	26.19	46.00	-19.81	Average
9	4.772	28.32	0.12	10.50	0.09	39.03	56.00	-16.97	QP
10	11.257	22.87	0.24	10.50	0.11	33.72	60.00	-26.28	QP
11	14.986	21.90	0.29	10.50	0.14	32.83	60.00	-27.17	QP
12	15.146	12.80	0.29	10.50	0.14	23.73	50.00	-26.27	Average

Remark:

1. Level = Read level + LISN Factor + Aux2 Factor + Cable Loss.

Product name:	Tablet	Product model:	X8Max
Test by:	Mike	Test mode:	PC mode
Test frequency:	150 kHz ~ 30 MHz	Phase:	Neutral
Test voltage:	AC 120 V/60 Hz		



Trace: 19

	Read Freq	Read Level	LISN Factor	Aux2 Factor	Cable Loss	Level	Limit Line	Over Limit	Remark
	MHz	dBuV	dB	dB	dB	dBuV	dBuV	dB	
1	0.150	31.55	0.06	10.50	0.01	42.12	56.00	-13.88	Average
2	0.154	43.25	0.06	10.50	0.01	53.82	65.78	-11.96	QP
3	0.170	26.82	0.06	10.50	0.01	37.39	54.94	-17.55	Average
4	0.190	38.90	0.05	10.50	0.03	49.48	64.02	-14.54	QP
5	0.246	33.11	0.05	10.50	0.01	43.67	61.91	-18.24	QP
6	0.313	29.54	0.05	10.50	0.03	40.12	59.88	-19.76	QP
7	0.497	21.45	0.04	10.50	0.03	32.02	46.05	-14.03	Average
8	4.574	11.09	0.11	10.50	0.09	21.79	46.00	-24.21	Average
9	4.721	24.05	0.11	10.50	0.09	34.75	56.00	-21.25	QP
10	10.905	14.62	0.22	10.50	0.12	25.46	50.00	-24.54	Average
11	14.672	24.48	0.27	10.50	0.13	35.38	60.00	-24.62	QP
12	14.828	15.37	0.27	10.50	0.14	26.28	50.00	-23.72	Average

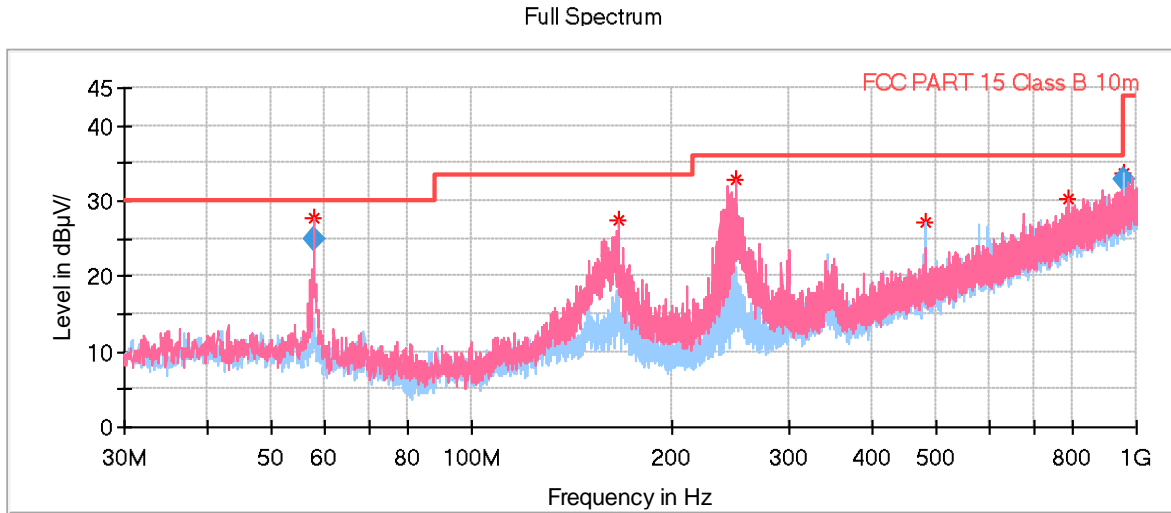
Remark:

1. Level = Read level + LISN Factor + Aux2 Factor + Cable Loss.

5.3 Radiated Emission

Below 1GHz:

Product Name:	Tablet	Product Model:	X8Max
Test By:	Mike	Test mode:	PC mode
Test Frequency:	30 MHz ~ 1 GHz	Polarization:	Vertical & Horizontal
Test Voltage:	DC 3.85V		



- * Critical_Freqs PK+
- ◆ Final_Result QPK
- FCC PART 15 Class B 10m
- Preview Result 1H-PK+
- Preview Result 1V-PK+

Frequency (MHz)	MaxPeak (dB µ V/m)	Limit (dB µ V/m)	Margin (dB)	Height (cm)	Pol	Azimuth (deg)	Corr. (dB/m)
57.887500	27.70	30.00	2.30	100.0	V	78.0	-16.6
166.042500	27.47	33.50	6.03	100.0	V	94.0	-15.0
250.093000	32.82	36.00	3.18	100.0	V	34.0	-16.8
479.983000	27.03	36.00	8.97	100.0	H	94.0	-10.2
788.685500	30.30	36.00	5.70	100.0	V	0.0	-2.8
959.163000	33.60	36.00	2.40	100.0	H	78.0	-1.0

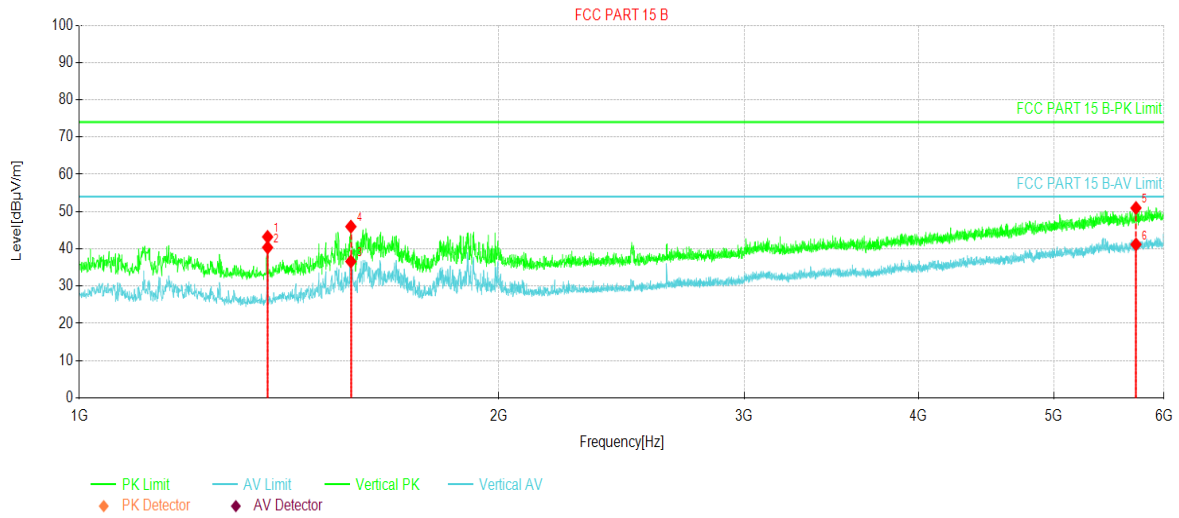
Frequency (MHz)	QuasiPeak (dB µ V/m)	Limit (dB µ V/m)	Margin (dB)	Height (cm)	Pol	Azimuth (deg)	Corr. (dB/m)
57.887500	24.83	30.00	5.17	125.0	V	67.0	-16.6
959.563000	32.72	36.00	3.28	100.0	H	85.0	-1.0

Remark:

1. Level = Reading + Factor(Antenna Factor + Cable Loss – Preamplifier Factor).

Above 1GHz:

Product Name:	Tablet	Product Model:	X8Max
Test By:	Mike	Test mode:	PC mode
Test Frequency:	1000 MHz ~ 6000 MHz	Polarization:	Vertical
Test Voltage:	DC 3.85V		

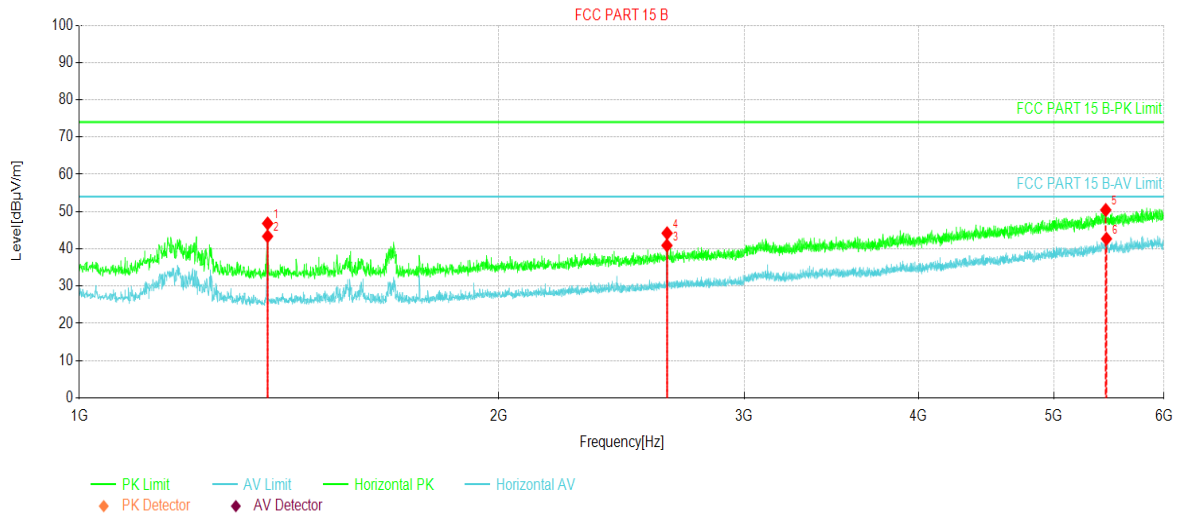


Suspected Data List								
NO.	Freq. [MHz]	Reading [dBµV/m]	Level [dBµV/m]	Factor [dB]	Limit [dBµV/m]	Margin [dB]	Trace	Polarity
1	1365.00	65.65	43.21	-22.44	74.00	30.79	PK	Vertical
2	1365.00	62.80	40.36	-22.44	54.00	13.64	PK	Vertical
3	1566.25	59.04	36.60	-22.44	54.00	17.40	PK	Vertical
4	1566.25	68.40	45.96	-22.44	74.00	28.04	PK	Vertical
5	5728.75	55.92	50.96	-4.96	74.00	23.04	PK	Vertical
6	5728.75	46.14	41.18	-4.96	54.00	12.82	PK	Vertical

Remark:

1. Level = Reading + Factor(Antenna Factor + Cable Loss – Pre-amplifier Factor).

Product Name:	Tablet	Product Model:	X8Max
Test By:	Mike	Test mode:	BLE Tx (LE 1M PHY)
Test Frequency:	1000 MHz ~ 6000 MHz	Polarization:	Horizontal
Test Voltage:	DC 3.85V		



Suspected Data List								
NO.	Freq. [MHz]	Reading [dBµV/m]	Level [dBµV/m]	Factor [dB]	Limit [dBµV/m]	Margin [dB]	Trace	Polarity
1	1365.00	69.25	46.81	-22.44	74.00	27.19	PK	Horizontal
2	1365.00	65.80	43.36	-22.44	54.00	10.64	PK	Horizontal
3	2640.00	58.86	40.90	-17.96	54.00	13.10	PK	Horizontal
4	2640.62	62.15	44.19	-17.96	74.00	29.81	PK	Horizontal
5	5450.00	56.48	50.42	-6.06	74.00	23.58	PK	Horizontal
6	5456.25	48.77	42.70	-6.07	54.00	11.30	PK	Horizontal

Remark:

1. Level = Reading + Factor(Antenna Factor + Cable Loss – Preampifier Factor).

-----End of report-----