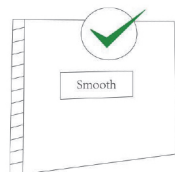


### ●For Non-Steel Wall Pools & Concrete Pools

\*The round metal plate can be used for walls or surfaces with smooth/ rough / uneven gaps.

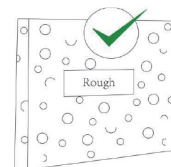
\*It's recommended to install ONLY underwater, and the glue can dry in about 1 Hour. In the absence of water, it takes 1 Day.



Smooth

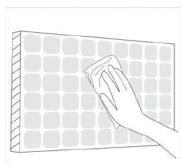


Rough

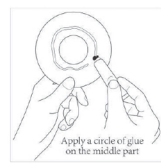


Uneven gaps

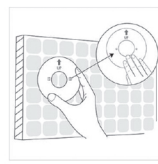
- 1.Wipe off dirt from the surface of the pool wall, glue can be used directly on the pool wall that full of water (no need any drainage).
2. Coat the glue in circle on the middle of the metal plate (use appropriate amount to prevent glue spilling).
- 3.Stick the metal plate onto the wall (Please follow the Upper arrow direction-Figure 3), then press it for 10 seconds, finally wait 1 hour until the glue fully dried out.
4. Align the two protruding dots between the lamp back and metal plate,then fixed on the plate.



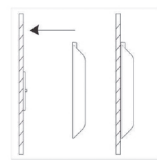
①



②



③



④

### Customer Service

Contact our after-sales service by email or Facebook,you will

get faster and more professional answers!

Please visit our YouTube when you have problems about installations!



[contact@lylmle.com](mailto:contact@lylmle.com)



[@Lylmle.led](https://www.facebook.com/Lylmle.led)



[@LyLmLe](https://www.youtube.com/LyLmLe)



[@Lylmle](https://www.instagram.com/Lylmle)

# LyLmLe



**Shenzhen Raypole Technology Co.,Ltd**

6F, Building A6, Bao Ying Ind.,Long Gang area, Shenzhen, China

WhatsApp: +86 15818706958, E-mail: [contact@lylmle.com](mailto:contact@lylmle.com)

## Application

**Our upgraded rechargeable led pool lights with a full waterproof structure work well in both wet and dry places.**

The back of light can be adhered to all magnetic or metal surfaces directly, with the magnetic base, this pool light can be installed not only in steel wall pools but also in wooden or concrete pools, fiberglass pools, vinyl pools, and all inground and aboveground pools, etc. Also, it can be used in bathtubs, hot tubs, courtyards, bathroom, boats, camping, and outdoor decoration.





**This User Manual applies to the following 2 models of lamps:**

PL09-RF4W(Round type)

PL19-RF4W(Square type)

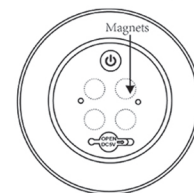
## Specification

Picture		
Model	PL09-RF4W (round type)	PL19-RF4W (square type)
Dimension	Φ5.9" / 0.44lb	L5.5" x W5.5" / 0.44lb
Power(Max)	4W	
Casing Option	White/Blue	
Light Color	RGBW full Color	
Light source(LED)	18 pcs 5050 RGBW LED	
Capacity of battery	3000mAh	
Charging Time	2-3 Hours(5V 2A adapter) 4-6 Hours(5V 1A adapter)	
Running Time(Max)	35-40 Hours	
Timer	2Hours, 4Hours, 6Hours	
Battery of Remote	1x CR2025(include)	
IP Rating	IP68	
Operating Temp.	10°C-50°C	
Power ON	Press the switch button for more than 3 second first, then the lamp starts to work and be controlled by controller.	
Power OFF	The lamp can be turned off directly by using the remote control,(no need by pressing the switch button)	
Indicator light of Charging	It is charging when the indicator light ( inside lens ) is red. And charging is complete when the indicator light ( inside lens ) is green.	
Maintain of Battery	The lamps should be charged once every 2-3 months to avoid battery damage,when it is not used for a long time.	
Package Include	Lamp, Round Metal Base, USB Charging Cable, RF Remote Control, Glue (adapter is not included)	

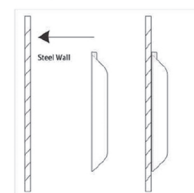
## Setting Instructions for Different Pool Types ( More than 3 types)

### ●For Steel Wall Pools

- 1.Take away the metal plate from the light ( Metal plate not use here).
- 2.The lamp will be tightly when you adsorbs the lamp on steel pool wall.



①



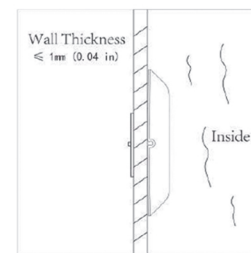
②

### ●For Soft-Sided Pools

- 1.Place the round metal plate outside but the pool lamp inside of the pool wall which could be submerged in water.
- 2.The lamp will be tightly against the soft pool wall,because the soft cloth is tightly held between metal plate and lamp.



①



②

## LEGAL NOTICES

This device complies with part 15 of the FCC Rules. Operation is subject to the following two conditions: (1) This device may not cause harmful interference, and (2) this device must accept any interference received, including interference that may cause undesired operation.

This equipment has been tested and found to comply with the limits for a Class B digital device, pursuant to Part 15 of the FCC Rules. These limits are designed to provide reasonable protection against harmful interference in a residential installation. This equipment generates, uses, and can radiate radio frequency energy and, if not installed and used in accordance with the instructions, may cause harmful interference to radio communications. However, there is no guarantee that interference will not occur in a particular installation. If this equipment does cause harmful interference to radio or television reception, which can be determined by turning the equipment off and on, the user is encouraged to try to correct the interference by one or more of the following measures:

- Reorient or relocate the receiving antenna.
- Increase the separation between the equipment and receiver.
- Connect the equipment into an outlet on a circuit different from that to which the receiver is connected.
- Consult the dealer or an experienced radio/TV technician for help.

**WARNING:** Changes or modifications to this unit not expressly approved by the party responsible for compliance could void the user's authority to operate the equipment.