



SATIMO 225, rue Pierre Rivoalon 29200 Brest - France
Tel:+33 (0)2 98 05 13 34; Fax: +33 (0)2 98 05 53 87; www.satimo.com



Annex B: Measurement Results

Tested Model : BM7IIDS

**Report Number:
WSCT-A2LA-R&E240600028A-SAR**

MEASUREMENT 1

Rear-side-middle

Type: Phone measurement (Complete)

Date of measurement: 20/7/2024

Measurement duration: 10 minutes 12 seconds

A. Experimental conditions.

<u>Area Scan</u>	<u>dx=15mm dy=15mm</u>
<u>ZoomScan</u>	<u>5x5x7,dx=8mm dy=8mm</u> <u>dz=5mm,Complete</u>
<u>Phantom</u>	<u>Validation plane</u>
<u>Device Position</u>	<u>Body</u>
<u>Band</u>	<u>IEEE 802.11b ISM</u>
<u>Channels</u>	<u>Middle</u>
<u>Signal</u>	<u>IEEE802.b (Crest factor: 1.0)</u>

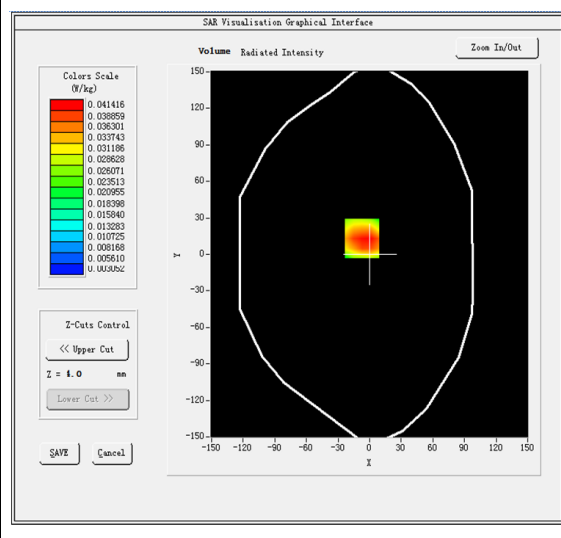
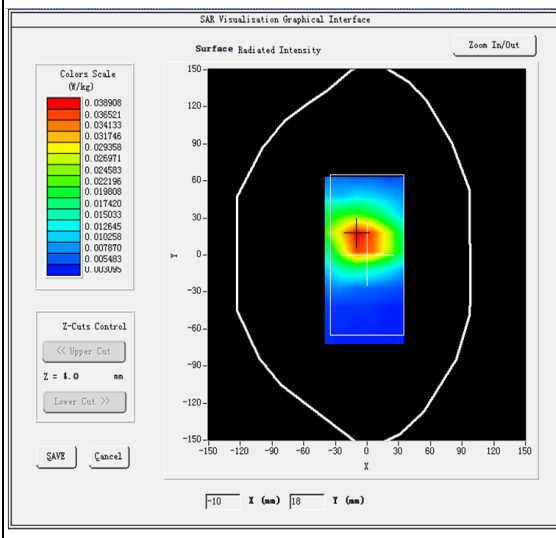
B. SAR Measurement Results

Middle Band SAR (Channel 11):

Frequency (MHz)	2462.000000
Relative permittivity (real part)	40.745499
Relative permittivity (imaginary part)	13.560400
Conductivity (S/m)	1.839694
Variation (%)	-1.020000

SURFACE SAR

VOLUME SAR

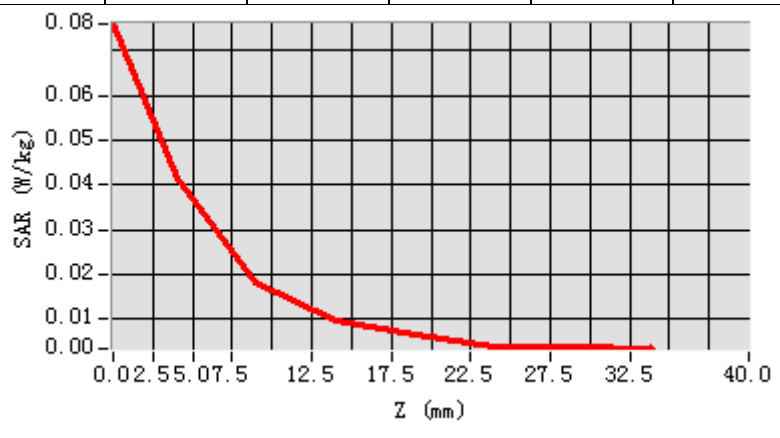


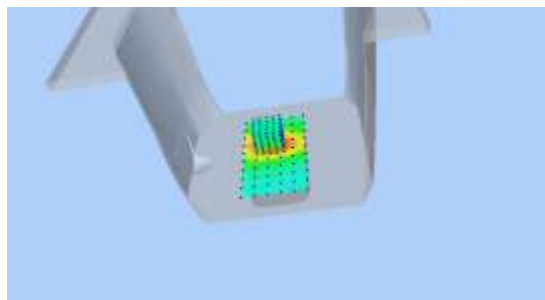
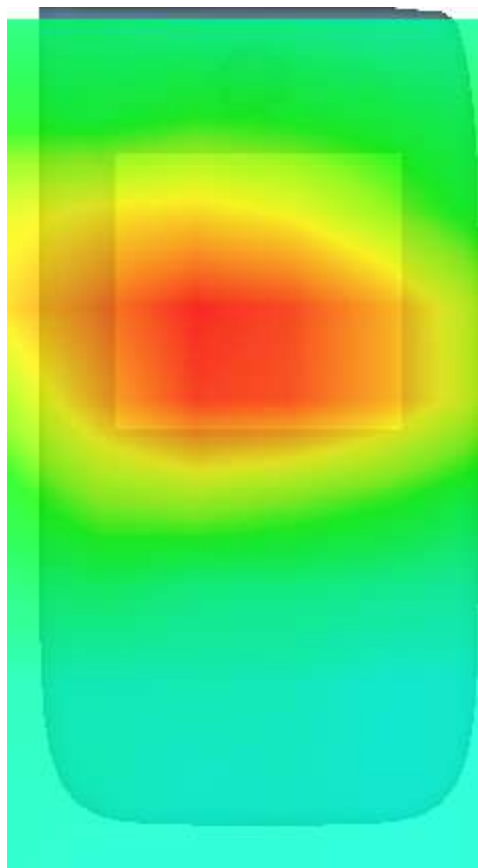
Maximum location: X=-7.00, Y=13.00

SAR Peak: 0.07 W/kg

SAR 10g (W/Kg)	0.122305
SAR 1g (W/Kg)	0.263570

Z (mm)	0.00	4.00	9.00	14.00	19.00	24.00	29.00
SAR (W/Kg)	0.0760	0.0414	0.0183	0.0094	0.0064	0.0036	0.0036



3D screen shot	Hot spot position
	

MEASUREMENT 2

Type: Phone measurement

Date of measurement: 20/71/2024

Measurement duration: 8 minutes 26 seconds

A. Experimental conditions.

<u>Area Scan</u>	<u>dx=15mm dy=15mm</u>
<u>ZoomScan</u>	<u>5x5x7,dx=8mm dy=8mm dz=5mm</u>
<u>Phantom</u>	<u>Validation plane</u>
<u>Device Position</u>	<u>Body</u>
<u>Band</u>	<u>Bluetooth</u>
<u>Channels</u>	<u>High</u>
<u>Signal</u>	<u>Bluetooth (Crest factor: 1.0)</u>

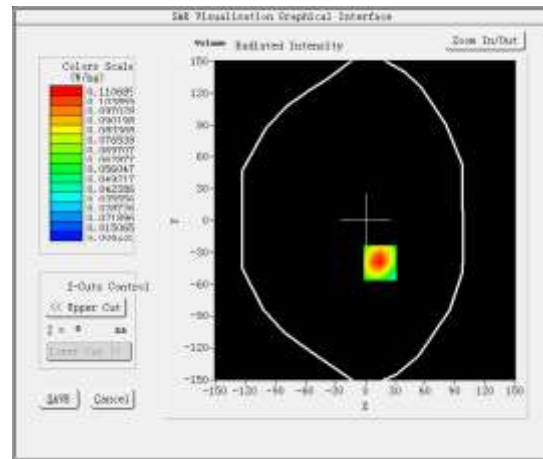
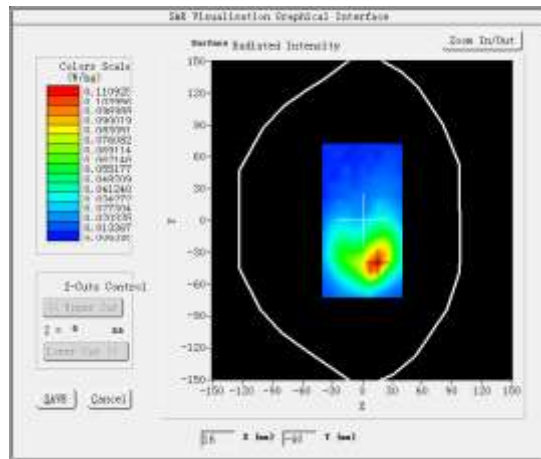
B. SAR Measurement Results

Higher Band SAR (Channel 78):

Frequency (MHz)	2480.000000
Relative permittivity (real part)	39.160000
Relative permittivity (imaginary part)	13.290000
Conductivity (S/m)	1.831067
Variation (%)	0.360000

SURFACE SAR

VOLUME SAR

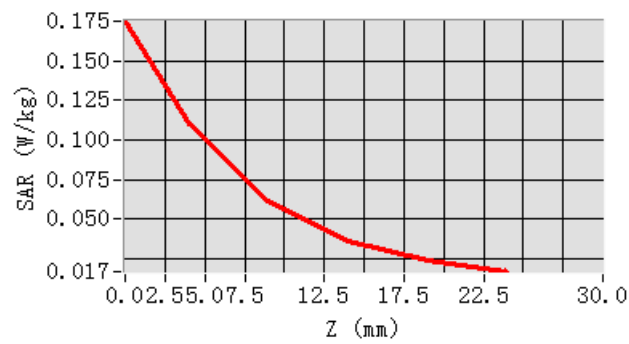


Maximum location: X=15.00, Y=-40.00

SAR Peak: 0.18 W/kg

SAR 10g (W/Kg)	0.086865
SAR 1g (W/Kg)	0.136246

Z (mm)	0.00	4.00	9.00	14.00	19.00
SAR (W/Kg)	0.1752	0.1107	0.0617	0.0362	0.0238



3D screen shot	Hot spot position
