

H.265/H.264 Network Camera Live Broadcasting Guide Web GUI Version

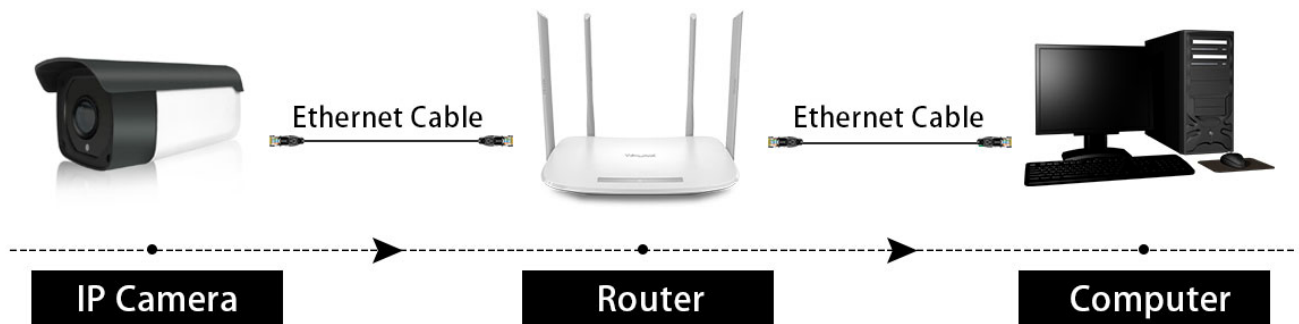
Default IP: 192.168.1.120, user: admin, password: 12345

Index

1. Connection Diagram.....	1
2. Download & Install IPCManager.....	1
3. Configure IP Address of IP Camera via IPCManager.....	1
4. Access IP Camera from a Browser.....	2
5. Adjust Focus(Only Available for Camera with Auto Focus Lens).....	3
6. Configure Parameters of Audio.....	3
7. Configure Parameters of Video.....	4
8. Configure RTMP Address(Take YouTube As Examl.....	5
9. Configure Wireless Connection (Only available to Wireless IP Cameras).....	6
10. Technical Support.....	7
FAQ.....	8
1. Why are settings set in IE(Internet Explorer) not saved?.....	8
2. Why cannot we stream live video to YouTube via WiFi IP Camera?..	8
3. Why cannot we still stream video to YouTube when all settings are correct especially under wireless connection.....	9

1. Connection Diagram

- Power on IP Camera and connect it to router via ethernet cable.



2. Download & Install

2.1 Download IPCManager from below links:

- <https://docs.exvist.com/livecam/tools/ipcmanager/download>

2.2 Install IPCManager

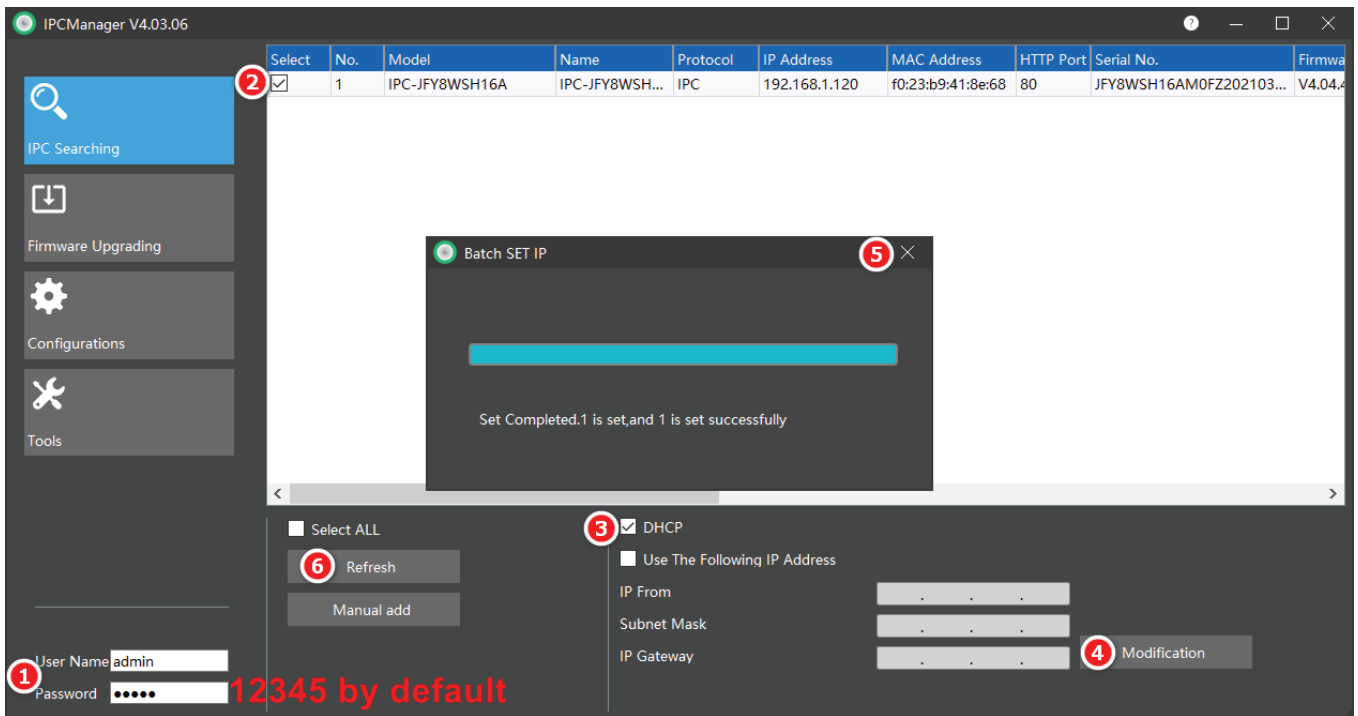
- Right click the application and run as administrator
- Select the corresponding language from the drop-down list (English, Polish, Russian, Japanese, German, Simplified Chinese, Traditional Chinese are available for Windows. Only English for MAC version.)
- Click Next-->Next-->Install

2.3 Download & Upgrade Firmware(If required)

- <https://docs.exvist.com/livecam/upgrade/download-firmware>
- <https://docs.exvist.com/livecam/upgrade/upgrade-firmware>
- ActiveX: <https://docs.exvist.com/livecam/tools/activex>

3. Configure IP Address of IP Camera via IPCManager

- Run IPCManager (If you already installed it)
- Enter username & password (admin & 12345 by default)
- Select the IP camera you would like to set
- Click checkbox of DHCP-->Modification-->Close-->Refresh

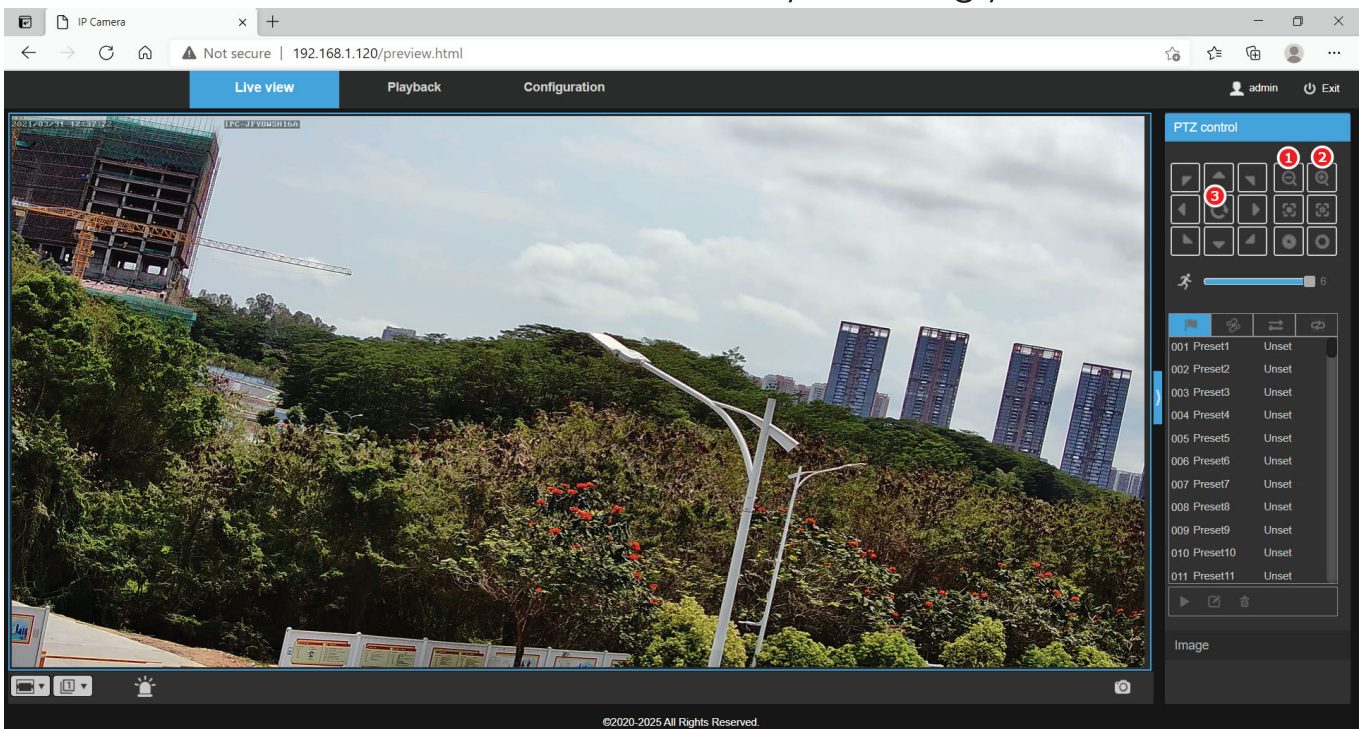


NOTE: please ensure the IP camera and your PC are on the same network segment if it's connected to the same router. That's why it's recommended to use DHCP to obtain IP address to make it for sure.

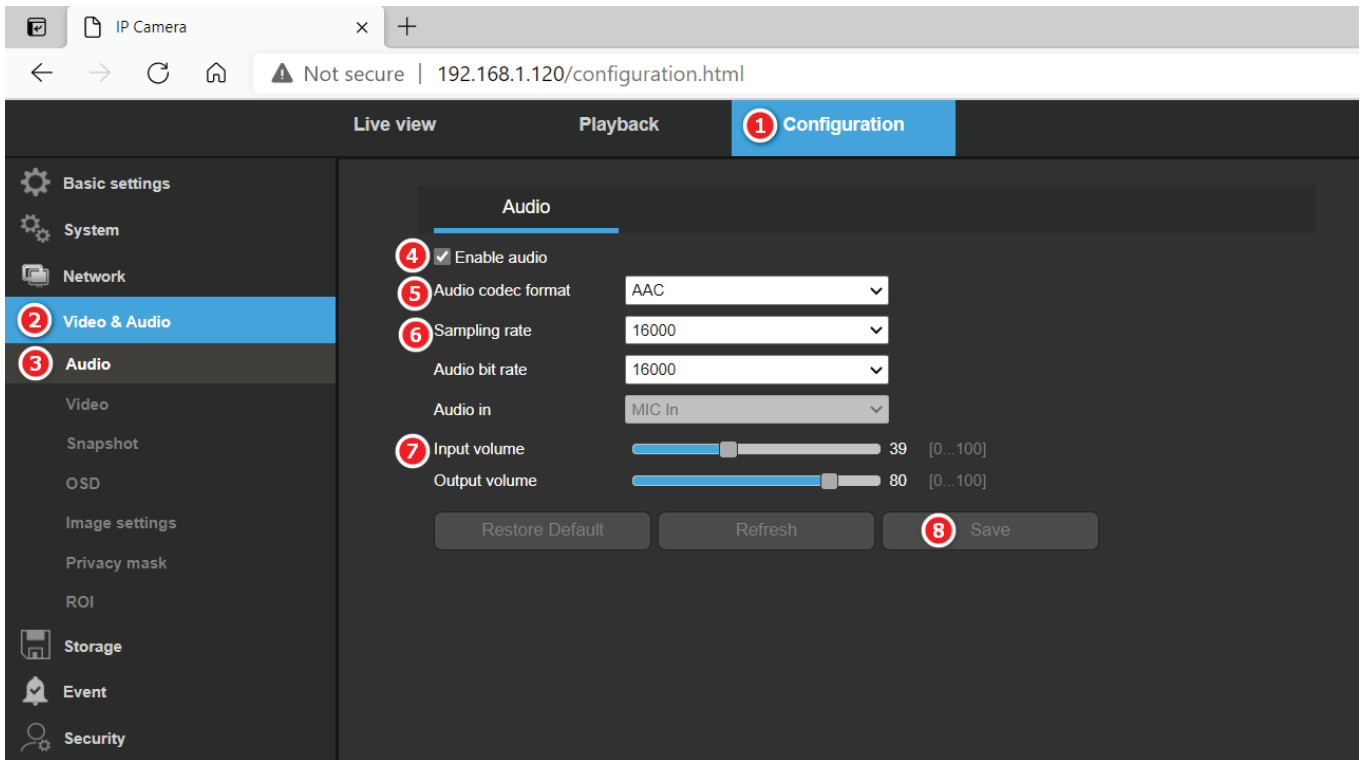
4. Access IP Camera from a Browser

- Start a browser like Edge, Chrome, Firefox (Chrome Recommended). Then enter IP you configured above
- Enter new password if you'd like to change default one
- Enter username(admin) and new password you set
- Click "Login" and the Preview page opens in your browser

5. Adjust Focus(Only Available for Camera with Auto Focus Lens)
- 1 means Zoom Out: long press until you think it ok.
 - 2 means Zoom In: long press until you think it ok.
 - 3 means Reset: reset to default focus if you wrongly zoom in/out.

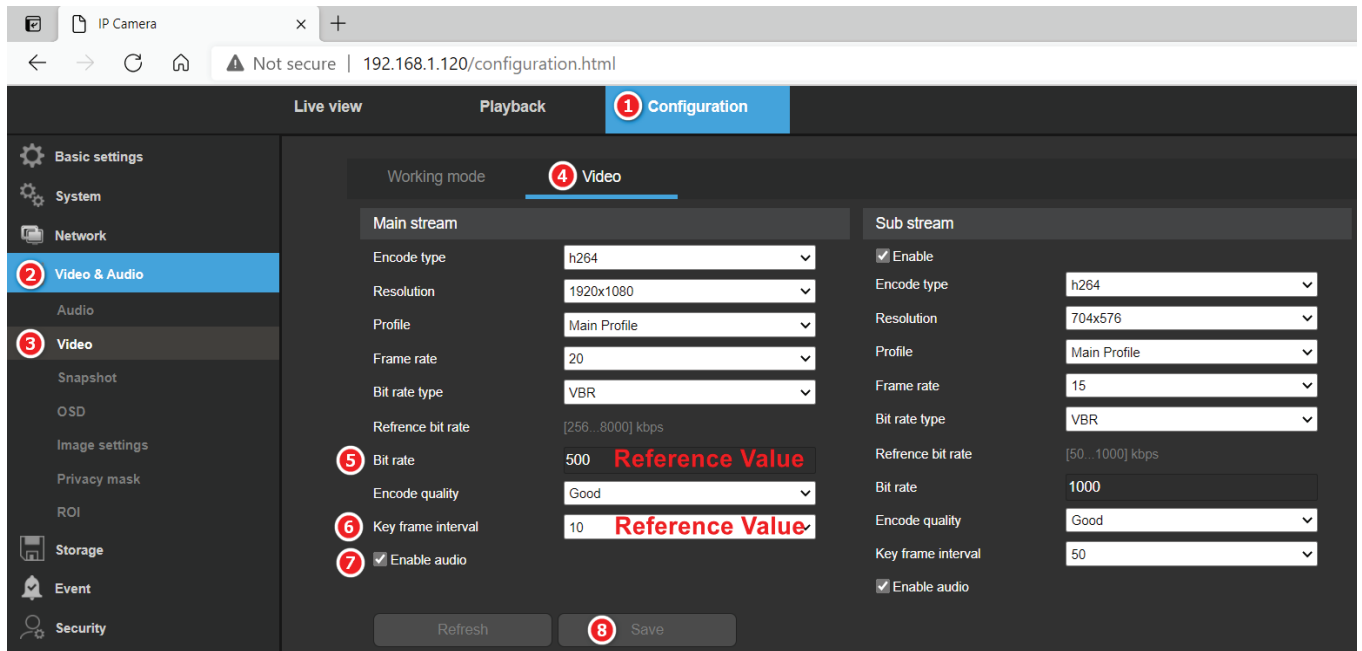


6. Configure Parameters of Audio
- Go to Configuration-->Video & Audio-->Audio-->Enable Audio
 - Set Audio codec format as "AAC"
 - Set Sampling rate as "16000" or higher
 - Set Input volume as "39" or so(Reference Value: users can log into GUI and set sampling rate as 16000 or higher if better voice quality is required because the default sampling rate here is 8000.)



7. Configure Parameters for Video

- Go to Configuration-->Video & Audio-->Video-->Video
- Set Bit rate as 500(Reference Value: users can set higher bit rate to remove mosaic but it should be matched to your network bandwidth because of uplink bandwidth used.)
- Set Key interval as 10(Reference Value: users can set lower key interval to get better image quality.)



8. Configure RTMP Address (Take YouTube As Example)

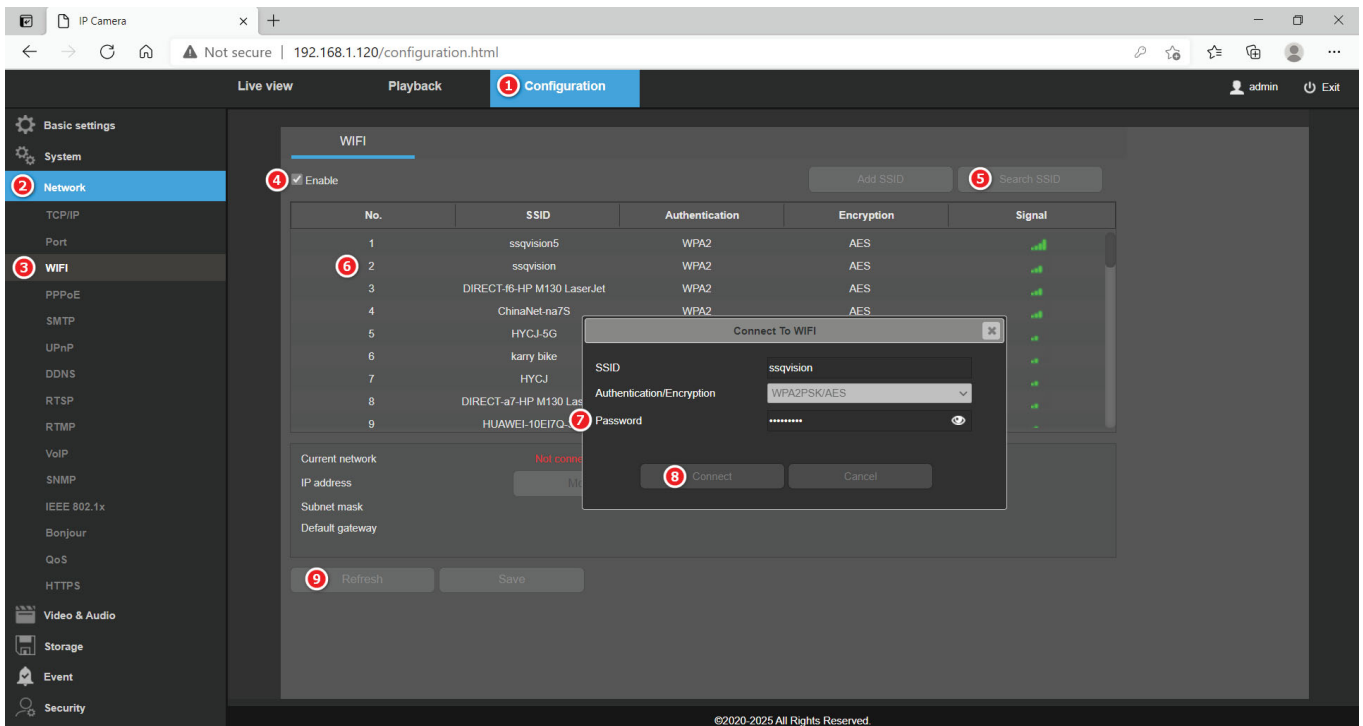
- Go to Configuration->Network->RTMP->Enable->YouTube Compatible
- Enter Push URL: copy Stream URL and Stream Key from YouTube Studio into column of Push URL below :

NOTE: if two lines for PUSH URL, the correct format is Line 1/Line2 with "/" separated between Line 1 and Line 2, please see below example based on YouTube:

rtmp://a.rtmp.youtube.com/live2/z2bv-qz7g-89w9-6uer

Line 1(Stream URL) Line 2(Stream Key)

9. Configure Wireless Connection (Only available to Wireless IP Cameras)
 - Go to Configuration-->Network-->WiFi-->Enable-->Search SSID
 - Double Click Trusted SSID
 - Enter correct password to SSID and Click "Connect"



- Refresh and Current Network will be shown "Connected" below which means it's already connected to WiFi. If disconnected, please try it again or check if MAC address of this IP camera is in the whitelist of router.
- NOTE:** It's necessary to plug out the ethernet cable and power off the IP camera to reboot it to make WiFi valid.

10. Technical Support

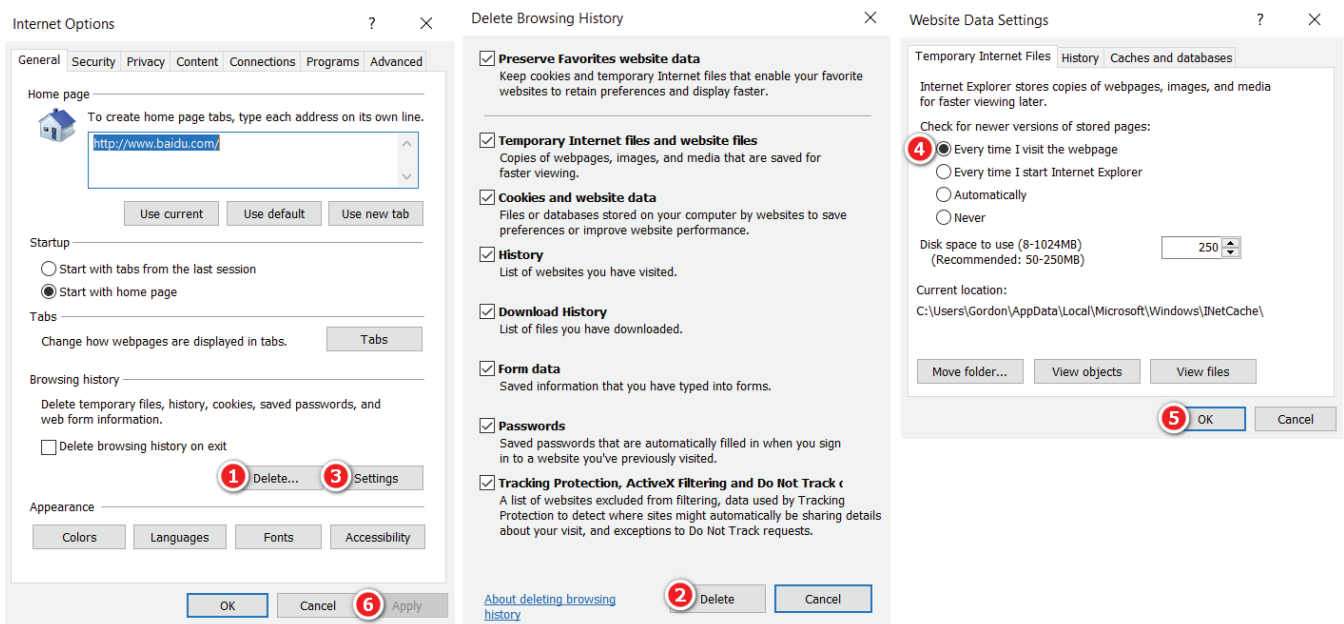
Any question, please contact us directly through below ways:

- Contact: Gordon
- Tell: +86-18923798767(WhatsApp)
- Skype: wyliau007
- Email: wyliau@exvist.com, info@exvist.com

FAQ

1. Why are settings set in IE (Internet Explorer) not saved?

A: It's necessary to clear cache after setting the parameters in IE, or else all settings will not be valid; If you wouldn't like to clear cache, it's recommended to use Google Chrome instead, it will be valid immediately after clicking Save button. How should we clear cache in IE? Please see below screenshot:



2. Why cannot we stream live video to YouTube via WiFi IP Camera?

A: First of all, please take it easy and follow below steps to use the WiFi encoder: a. connect it to your local network via ethernet cable; b. connect it to WiFi by clicking the corresponding SSID of WiFi, enter password and save it to connect to WiFi; c. plug out the ethernet cable and make sure that it's connected to WiFi only; d. power it off and reboot it;

NOTE: When streaming live video to YouTube or other media servers, it's only supported to do that either wired connection or wireless connection, or else it doesn't work if both connected. Besides, if you would like to switch the method of pushing video from wired to wireless, it's necessary to plug out the Ethernet cable and power off to reboot the encoder first, then it will be changed to wirelessly push stream.

3. Why cannot we still stream video to YouTube when all settings are correct especially under wireless connection?

A: Please check if DNS is set correctly.

- In America, it's recommended to use default DNS 8.8.8.8.
- In EU, it's recommended to use the DNS obtained from ISP(Internet Service Provider). Besides, the DNS of your local largest ISPs or other DNS like Google in EU.
- For other regions, it's recommended to use the DNS obtained from ISP (Internet Service Provider). Besides, the DNS of your local largest ISPs or other DNS like Google at your local place.

NOTE: If possible, you can also try the settings with primary DNS as 192.168.x.1 and leave secondary DNS as blank.

FCC Warning:

This equipment has been tested and found to comply with the limits for a Class B digital device, pursuant

to part 15 of the FCC Rules. These limits are designed to provide reasonable protection against harmful interference in a residential installation. This equipment generates, uses and can radiate radio frequency energy and, if not installed and used in accordance with the instructions, may cause harmful interference to radio communications. However, there is no guarantee that interference will not occur in a particular installation. If this equipment does cause harmful interference to radio or television reception, which can be determined by turning the equipment off and on, the user is encouraged to try to correct the interference by one or more of the following measures:

- Reorient or relocate the receiving antenna.
- Increase the separation between the equipment and receiver.
- Connect the equipment into an outlet on a circuit different from that to which the receiver is connected.
- Consult the dealer or an experienced radio/TV technician for help.

Caution: Any changes or modifications to this device not explicitly approved by manufacturer could void your authority to operate this equipment.

This device complies with part 15 of the FCC Rules. Operation is subject to the following two conditions:

(1) This device may not cause harmful interference, and (2) this device must accept any interference received, including interference that may cause undesired operation.

This equipment complies with FCC radiation exposure limits set forth for an uncontrolled environment. This equipment should be installed and operated with minimum distance 20cm between the radiator and your body.