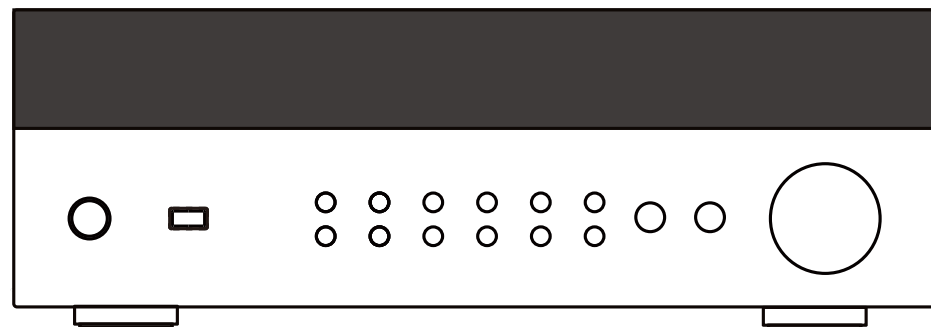


# USER MANUAL

MODEL: PT885BT

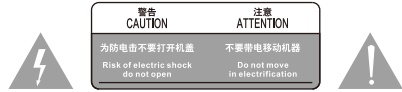


Please keep this manual in a convenient place for future reference  
Please read the following instructions carefully before using our product  
Please use this product under your full understanding of the manual

## SAFETY INSTRUCTION

### Warning

AC 220V high voltage inside the machine. Do not open the cover, re-fix or touch the inner parts, No-user serviceable parts inside, refer servicing to qualified service personnel.



### Protect power cord

Avoid high pressure and stamp on, do not pull or push power cord excessively.



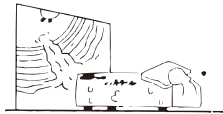
### Ventilate

To keep ventilation, put on this unit in a room with good ventilation, Do not put the disk on it or cover, keep it away from wall over 10cm. Do not put it aside the bed, sofa, carpet or similar object, in case block vent.



### Ventilate

Avoid direct sunshine or nearing heater or excessive humidity and dusty place.



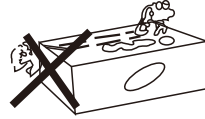
### Warning

Avoiding the liquid splash to device, and do not put the vase or something full with liquid near the device.



### Electric shock

Avoid metals dropping in, like needle, hairpin, coin, otherwise the unit will get short and out of work.



### Abnormal odor

Cut down the power and pull out power when smell odd smell odor or smoke, Contact the agent or nearly maintenance center.



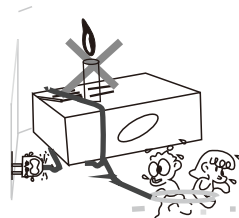
### Warning

Be sure to use AC 220V power supply, Do not use non standard power supply and AC power supply, regulated power supply.



### Warning

Do not put it near the flame, like lighting candle, power plug should be keep pull out or in.



## TROUBLE SHOOTING

Problems	Cause	Modified methods
No display	The power socket is In poor contact or without electricity.	Check the power supply and plug of the socket.
There's display but no sound output	<ol style="list-style-type: none"> <li>1. The speaker wiring is wrong.</li> <li>2. The playback source doesn't corresponds to the selected signal state</li> <li>3.The volume level Is in lowest output state.</li> <li>4. MUTE is activated</li> </ol>	<ol style="list-style-type: none"> <li>1. Connect the speaker line according to the wiring diagram</li> <li>2. Select the input state which is playing</li> <li>3.Turn the main volume &amp; adjust the knob clockwise.</li> <li>4. Deactivate MUTE</li> </ol>
Remote control doesn't work	<ol style="list-style-type: none"> <li>1. The remote transmitter window is not aimed at the local receiving window.</li> <li>2. There are obstacles between the unit and the remote control</li> <li>3. Drained remote control batteries</li> </ol>	<ol style="list-style-type: none"> <li>1. Aim at the host receiving window.</li> <li>2. Remove obstacles</li> <li>3. Replace new battery</li> </ol>
Out of control	Being disturbed or improperly operated	Turn it OFF and then turn it ON
Sound distortion	Main volume adjustment is too much.	Turn down the main volume.
The channel sound is wrong	Channels sound mode is not correct	Press"CH.MODE" on the panel or remote control
Music files in USB can't be played for long period of time	The USB files is not supported	Delete unsupported files
The phone cannot transmit audio to the amplifier via bluetooth	<ol style="list-style-type: none"> <li>1.The bluetooth function of mobile phone is not opened.</li> <li>2. No music is played on the phone.</li> <li>3. Amplifier Bluetooth is not paired with mobile phone bluetooth.</li> <li>4. Incorrect amplifier input channel</li> <li>5. Bluetooth can't connect.</li> </ol>	<ol style="list-style-type: none"> <li>1. Turn ON bluetooth</li> <li>2. Open the phone and play music</li> <li>3. Rematch Bluetooth connection</li> <li>4. Switch the amplifier input into "BT" channel.</li> <li>5. Turn off other bluetooth devices</li> </ol>

TECHNICAL PARAMETERS

Input power: AC 120V/60HZ

Power consumption: <300W

Rated power: 400W(FL/FR/SW:100Wx3+  
C/SL/SR/SBL/SBR:20Wx5, 4Ω)

Frequency response: 20Hz-20KHz

Driver impedance range: 4-8Ω

SNR: >80dB

THD (1KHz): <0.5%

Input sensitivity: 350mV

Treble: ±14dB(10khz)

Bass: ±14dB(100khz)

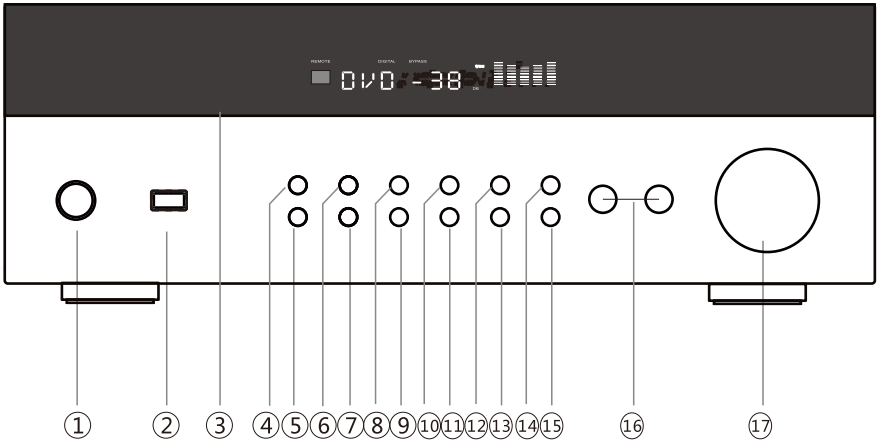
FEATURES

- \*7.1 channel receiver system
- \*Digital VFD display
- \*Built in Bluetooth wireless audio streaming
- \*USB support lossless audio format APE/WAV/FLAC/MP3
- \*DSP sound processing Technology
- \*4K Ultra HDTV pass-through support
- \*3D video & Blu-Ray video pass-through support
- \*FM stereo radio
- \*Connection interface: HD x3/ HD output (with ARC), AUX/CD&DVD/PC/Optical/Coaxial input, SW out, Speaker binging posts
- \* 6.5mm microphone input x2, digital echo control
- \* Intelligent CPU control, perfect protection design for short circuit and overload
- \*Automatic shutdown memory function
- \*Multi-function infrared remote control

WHAT'S IN THE BOX

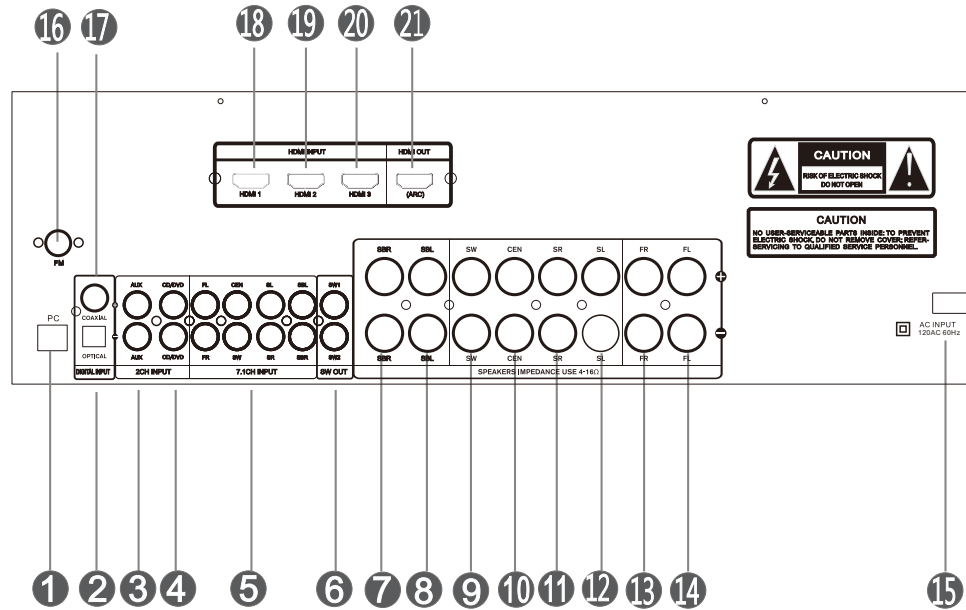
- 1.Amplifier
- 2.Manual
- 3.Remote
- 4.Power cord
- 5.Fm antenna

FRONT PANEL DIAGRAM



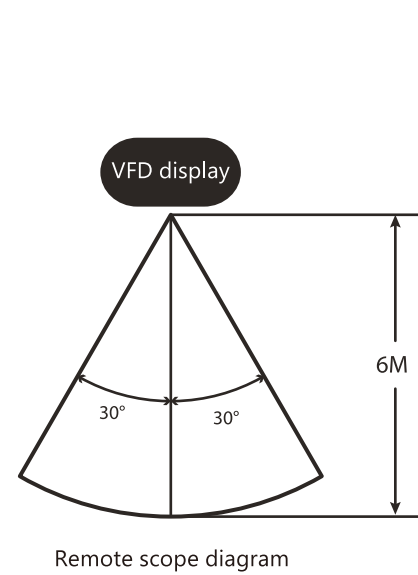
- 1.Power switch
- 2.USB input jack
- 3.VFD display
- 4.Signal input select key (to select PC/USB/COAXIAL/OPTICAL/HDMI1/HDMI2/HDMI3)
- 5.Reset
- 6.Signal input select key (to select AUX/CD&DVD/AC-7.1/TUNER/BT)
- 7.ARC function control
- 8.Mute
- 9.Loud control
- 10.Channel mode (2.1/5.1/7.1)
- 11.Prev track under USB/BT input; Prev station under FM mode
- 12.MIC menu select button(mic vol/echo/delay, use with master volume/multi-function adjust knob to adjust
- 13.Auto selection button. Pause/play under USB/BT; auto search under FM mode
- 14.Master menu select button. Include master channel L/R balance, treble/bass, C/SL/SR/S-BL/SBR/SUB volume, use with master volume/multi-function adjust knob to adjust
- 15.Next track under USB/BT input; Next station under FM mode
- 16.6.5mm MIC input
- 17.Master volume/multi-function adjust knob, it can adjust with MIC menu and Master menu

## REAR PANEL DIAGRAM

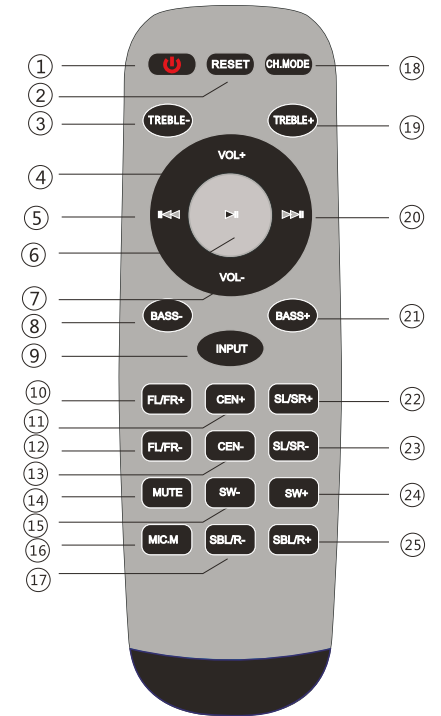


- |  |                                  |
|--|----------------------------------|
| 1.PC(DAC) audio input                        | 12.SBL channel output            |
| 2.Optical input                              | 13.FR channel output             |
| 3.AUX audio input                            | 14.FL channel output             |
| 4.CD/DVD audio input                         | 15.Power socket                  |
| 5.7.1ch audio input                          | 16.FM antenna                    |
| 6.Two way RCA active subwoofer signal output | 17.Coaxial input                 |
| 7.SR channel output                          | 18.HDMI 1 input                  |
| 8.SL channel output                          | 19.HDMI 2 input                  |
| 9.Passive subwoofer channel output           | 20.HDMI 3 input                  |
| 10.Center channel output                     | 21.HDMI output(with ARC unction) |
| 11.SBR channel output                        |                                  |

## REMOTE CONTROL INSTRUCTION

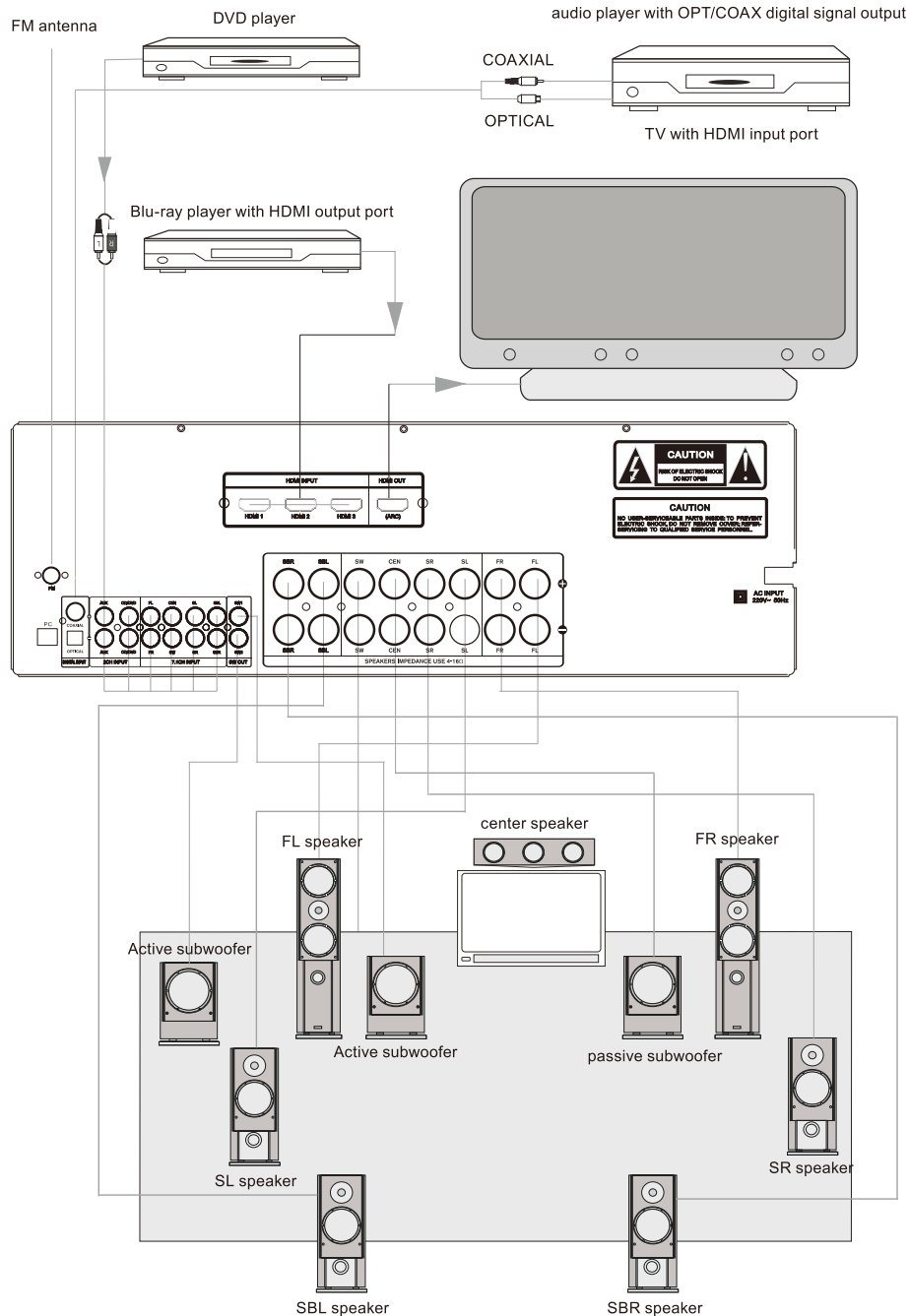


- 1.Power on/off
- 2.Reset
- 3.Treble volume down
- 4.Master volume up
- 5.Prev track
- 6.Play/pause
- 7.Master volume down
- 8.Bass volume down
- 9.Input selection
- 10.FL/FR channel volume up
- 11.Center channel volume up
- 12.FL/FR channel volume down
- 13.Center channel volume down
- 14.Mute



Remarks: 5,6,20 only work under USB/BT mode

## SYSTEM CONNECTION



## OPERATING INSTRUCTION

### PREPARATION BEFORE OPERATION

- \*This product must be placed on a flat, solid object to ensure that it has sufficient capacity to support the product without falling.
- \*Please use this product according to the safety requirements in this manual and connect with other products (TV, Speaker, DVD player or player) as required.
- \*Open the audio source device connected to this product.
- \*Press the power Switch button on the panel to turn on the power.

### PREPARATION BEFORE OPERATION

#### Channel Selection

This product has 12 group channel input

Press INPUT key on panel or remote to switch between HD1, HD2, HD3, OPTICAL, COAXIAL, BT, USB, AUX, CD/DVD, PC, FM, 7.1ch (remarks: if to select USB, have to insert memory stick first, otherwise could not select)

#### Channel mode

Press CH.MODE key on remote to switch between HiFi/2.1/5.1/7.1ch

#### PC input

The product has DAC decoding function, connect a computer with USB output to the DAC (PC) input port through a dedicated cable.

Press INPUT key one panel or remote to switch DAC input

#### Volume adjustment

##### Total volume adjustment

Rotate the "MASTER VOLUME" knob on the panel, or press the "MAIN VOL+/-" button on the remote control to adjust the total volume of the power amplifier.

##### Front, center, surround, surround back and subwoofer volume adjustment:

Press the "MENU" button on the panel, adjust until the display shows "FLR xx", "SWV xx", "CEN xx", "SLR xx", "SBLR xx" and adjust "VOLUME/MULTI" main volume/multi-function knob, adjust the volume of front channel, surround, subwoofer channel, center channel, surround channel and surround back channel respectively.

Press the button on the remote control to adjust FL/FR  $\pm$ , SL/SR  $\pm$ , CEN  $\pm$ , SW  $\pm$  and SBL/R  $\pm$ .

## Main Channel Tone and Balance

Press the " Menu" on the control panel of the receiver system, Adjust until the display shows "Lxx Rxx", Rotate the " MASTER VOLUME" knob to adjust the front channel volume balance, when it is turned clockwise, The right front channel volume increases. When rotating counter clockwise, the volume of the left front channel increases. use same way to adjust bass and treble, the display will show "BASS xx" and "TREB xx", also can adjust in remote by "Treble ±" and "Bass ±"(bass/treble adjustment is not workable under HIFI mode)

## MUTE

Press "MUTE" button on the remote control to turn ON or OFF MUTE function. When Mute on there is flicker on display.

## LOUD

Press "LOUDNESS" on the front panel, The low frequency of this unit can be increased appropriately at low volume.

## RESET

Press "reset" button on the remote control to restore factory settings.

## USB OPERATION

Insert the USB flash disk, the display shows 'USB' model, automatically play the content in the USB flash disk.

Press the "◀◀", "▶▶" and "▶||" buttons on the panel or remote control to operate the corresponding previous and next songs And play/pause function.

It can support the audio format files: MP3\WMA\APE\WAV\FLAC.

Note: 1 Due to the continuous updating of audio files, this machine cannot play files in all formats;

2 When the USB flash disk is not inserted, the 'USB' channel cannot be displayed when pressing the input selection, and the above functions cannot be operated.

## MIC

1 Insert the microphone.

2 Press the "MIC MENU" on the control panel of the receiver system, the display shows "MIC xx", "ECHO xx", "DEL xx", "MTRE xx" and "MBAS xx", Rotate the "MASTER" knob to adjust the microphone Master/echo/delay /bass/treble volume level.

Press the "MIC VOL+/-", "ECHO+/-" and "DELAY+/-" buttons on the remote control to adjust the microphone volume/echo/delay respectively.

**Note: The above operations are invalid when the microphone is not inserted.**

## HDMI

1. Connect audio equipment (Blu-ray DVD player, Set Top Box) with HDMI output by using HDMI cable.
2. Press the 'input' on the remote control or press the "input" on the control panel of the receiver system. Select the appropriate channel.
3. HDMI with ARC function. Set the TV audio in "External speaker" or "Audio System", press "ARC" on remote control. When the display shows "ARC on", This amplifier can play the TV audio.

**Note: HDMI Version 1.4B. Support 3D 4K, Audio output need to be set as "PCM"**

**Make sure the TV has ARC function and set the TV in ARC ON state.**

## WIRELESS BT FUNCTION

1. Press the "ANALOG INPUT" button on the panel to adjust until the display shows "BT", or press the 'INPUT' button on the remote control to select the Bluetooth channel.
2. Ensure Bluetooth is activated on your device and search for bluetooth Network Named 'AV-6136HD', No password is required for connecting.
3. Press the "◀◀", "▶▶" and "▶||" buttons on the panel or remote control to operate the corresponding previous and next songs and play/pause function.

## FM RADIO

Press "ANALOG INPUT" on the panel or "INPUT" on the remote till display shows "FM"

Channel: Press "CH+/-", "◀◀", "▶▶" on the panel or remote control to call up the stored radio station.

FM AUTO memory: Press "AUTO+/-", "▶||" on the panel or remote control to automatically store stations.

## FCC Warning

### 15.19 Labeling requirements.

This device complies with part 15 of the FCC Rules. Operation is subject to the following two conditions: (1) This device may not cause harmful interference, and (2) this device must accept any interference received, including interference that may cause undesired operation.

### 15.21 Information to user.

Any Changes or modifications not expressly approved by the party responsible for compliance could void the user's authority to operate the equipment.

### 15.105 Information to the user.

Note: This equipment has been tested and found to comply with the limits for a Class B digital device, pursuant to part 15 of the FCC Rules. These limits are designed to provide reasonable protection against harmful interference in a residential installation. This equipment generates uses and can radiate radio frequency energy and, if not installed and used in accordance with the instructions, may cause harmful interference to radio communications. However, there is no guarantee that interference will not occur in a particular installation. If this equipment does cause harmful interference to radio or television reception, which can be determined by turning the equipment off and on, the user is encouraged to try to correct the interference by one or more of the following measures:

- Reorient or relocate the receiving antenna.
- Increase the separation between the equipment and receiver.
- Connect the equipment into an outlet on a circuit different from that to which the receiver is connected.
- Consult the dealer or an experienced radio/TV technician for help.

### FCC RF Radiation Exposure Statement:

- 1.This Transmitter must not be co-located or operating in conjunction with any other antenna or transmitter.
- 2.This equipment complies with RF radiation exposure limits set forth for an uncontrolled environment.

This equipment should be installed and operated with minimum distance 20cm between the radiator and your body.

## IC Warning

This device complies with Industry Canada's licence-exempt RSSs. Operation is subject to the following two conditions:

- (1)This device may not cause interference;
- (2)This device must accept any interference, including interference that may cause undesired operation of the device.

Le présent appareil est conforme aux CNR d'Industrie Canada applicables aux appareils radio exempts de licence. L'exploitation est autorisée aux deux conditions suivantes:

- (1)l'appareil ne doit pas produire de brouillage, et
- (2)l'utilisateur de l'appareil doit accepter tout brouillage radioélectrique subi, même si le brouillage est susceptible d'en compromettre le fonctionnement.

The information listed above provides the user with information needed to make him or her aware of a RF exposure, and what to do to assure that this radio operates within the FCC exposure limits of this radio.

The device complies with RF specifications when the device used at 20cm from the body.Third-party belt-clips, holsters, and similar accessories used by this device should not contain any metallic components. Body-worn accessories that do not meet these requirements may not comply with RF exposure requirements and should be avoided. Use only the supplied or an approved antenna.