

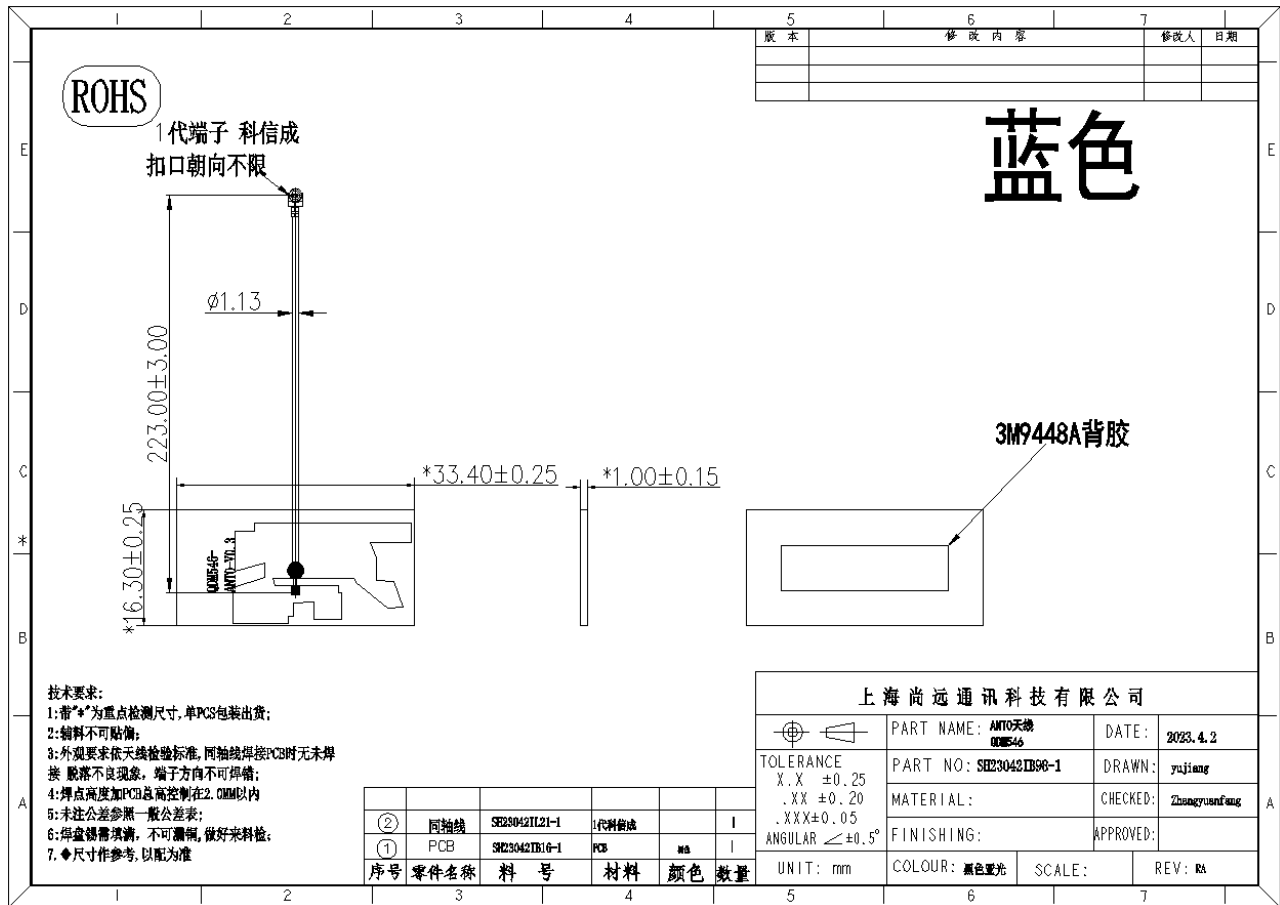
Feature

- ※ High gain
- ※ Omani-directional
- ※ Wide bandwidth

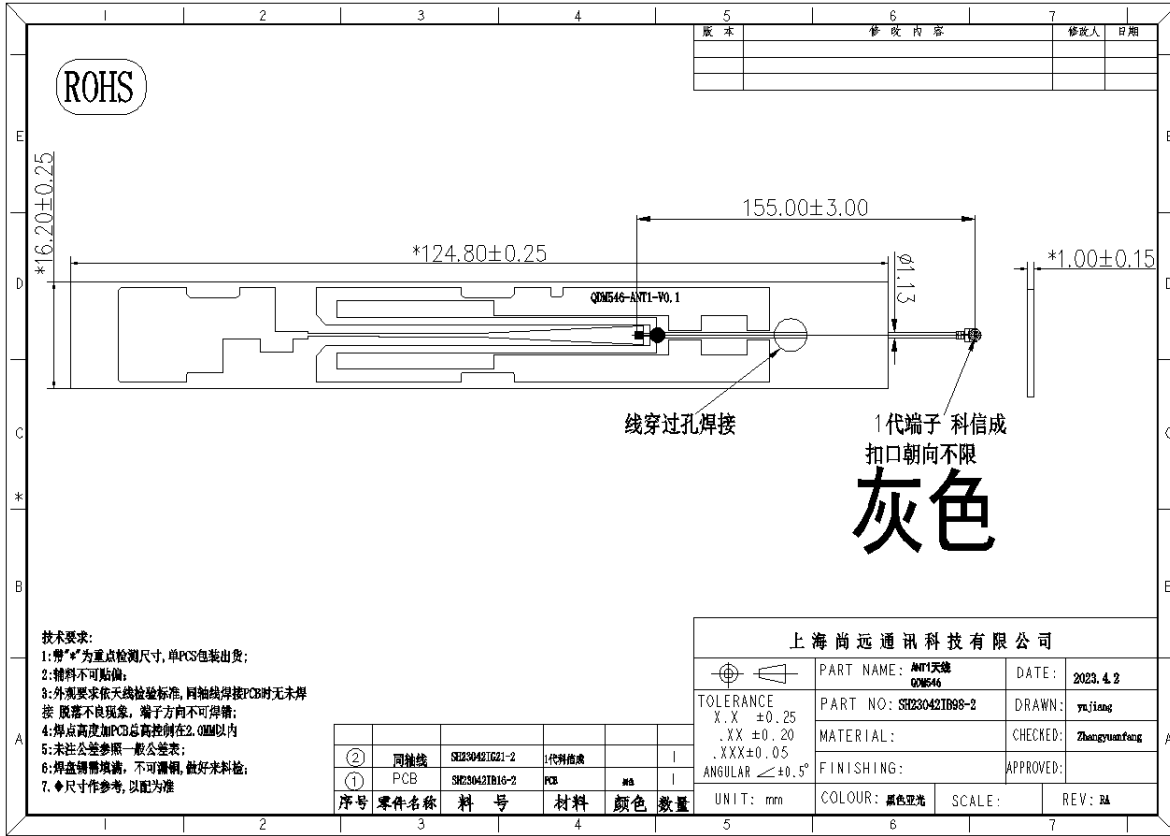
Application

- ※ WCDMA/LTE communication applications

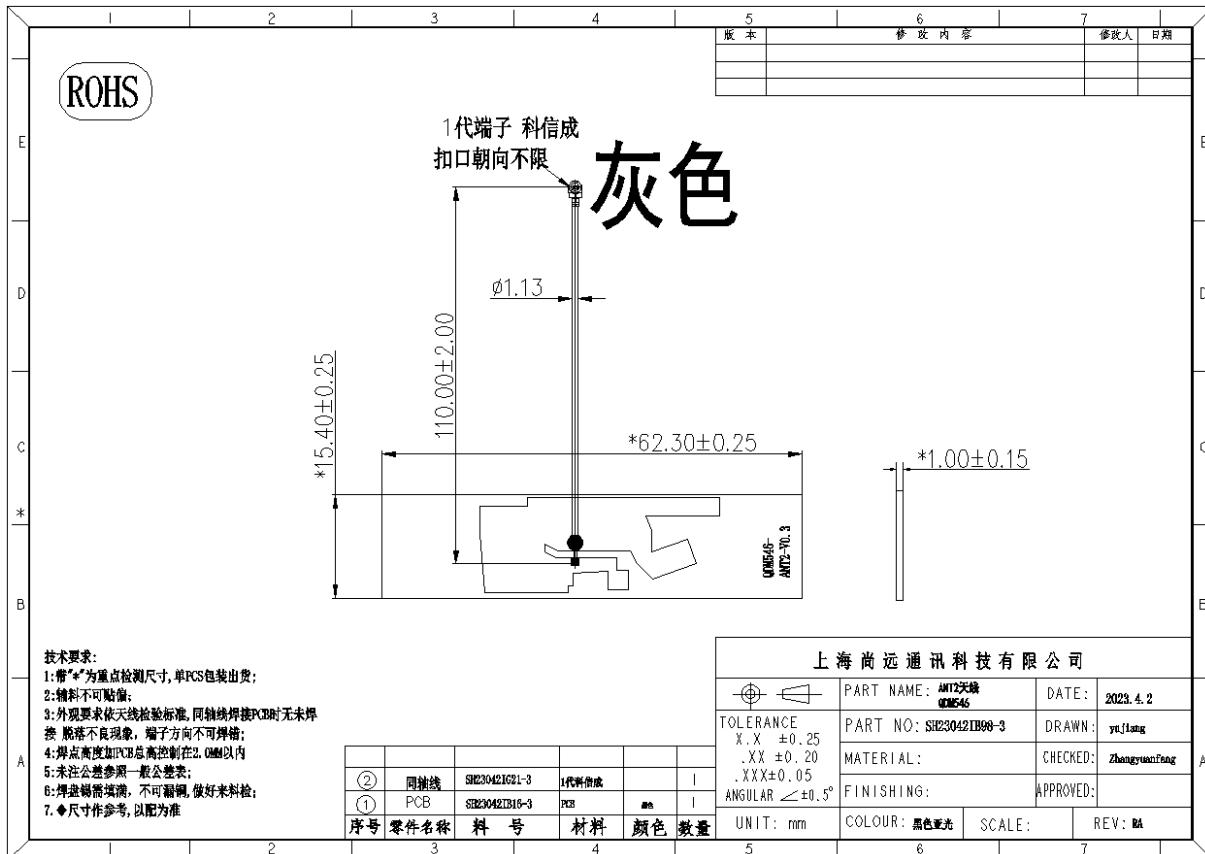
ANT0



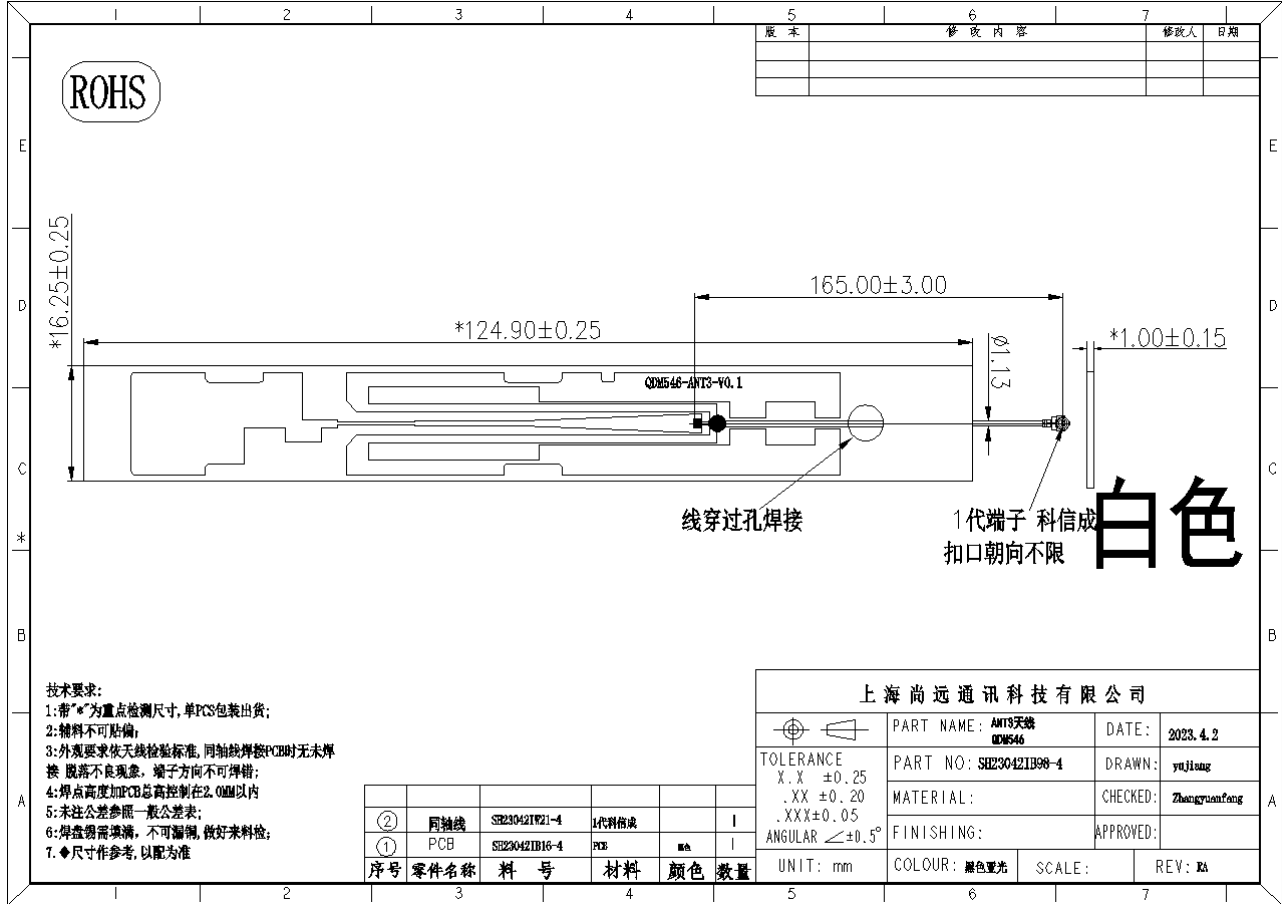
ANT1



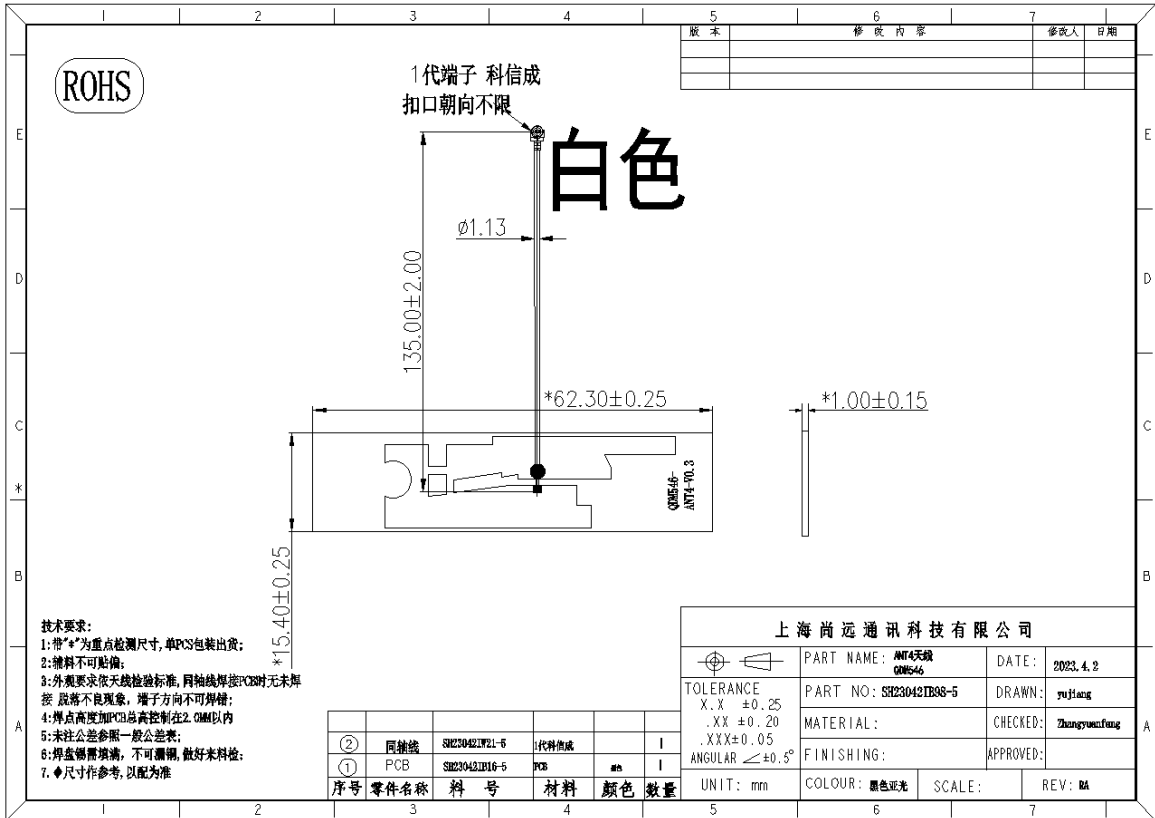
ANT2



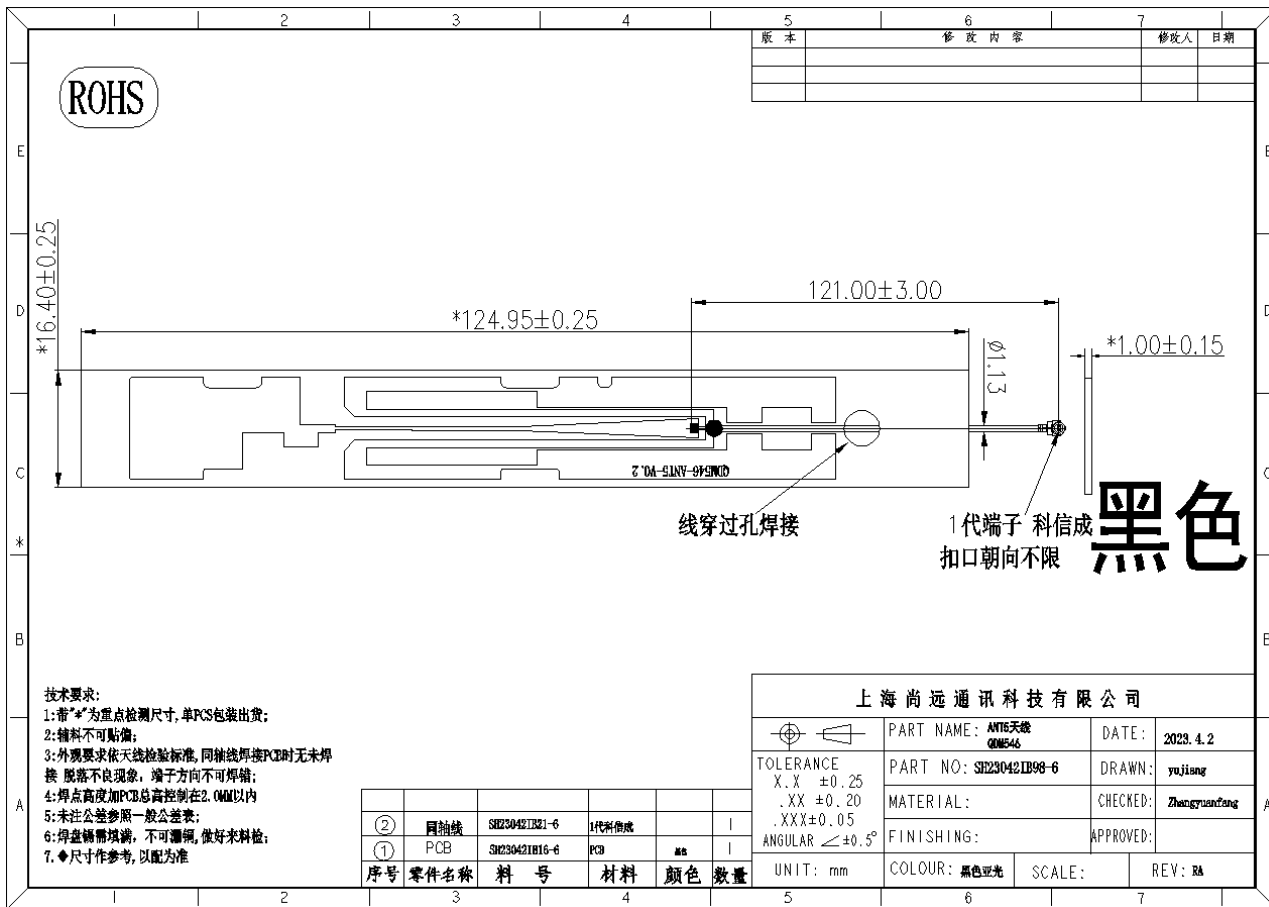
ANT3



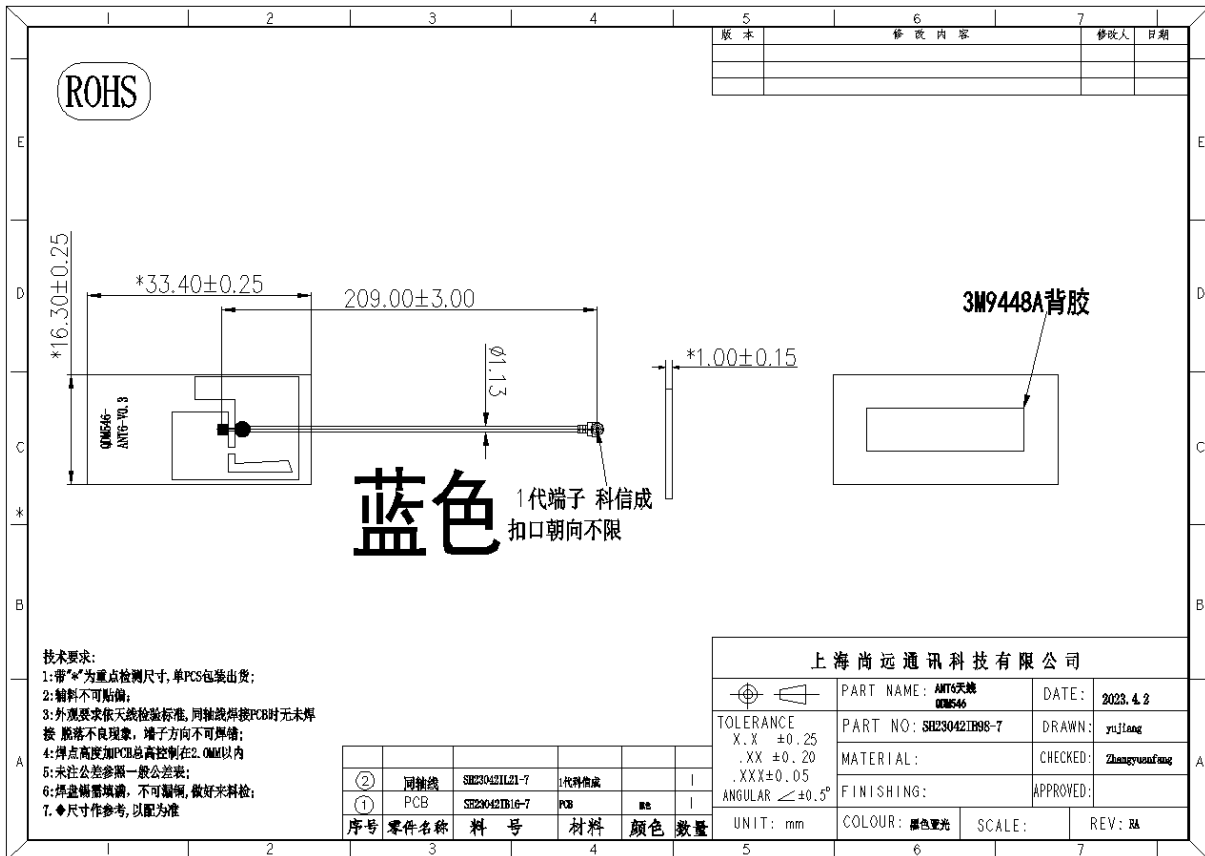
ANT4



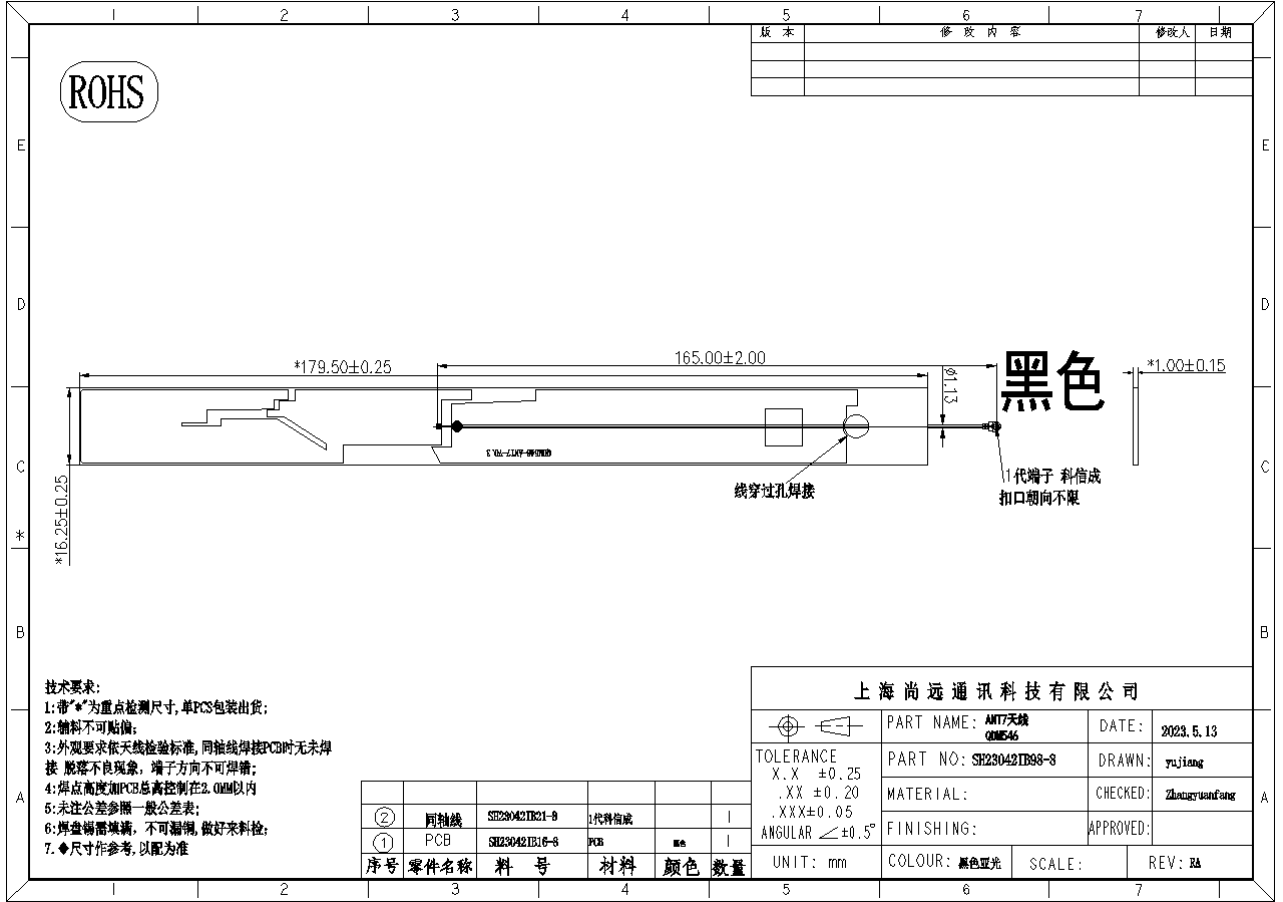
ANT5



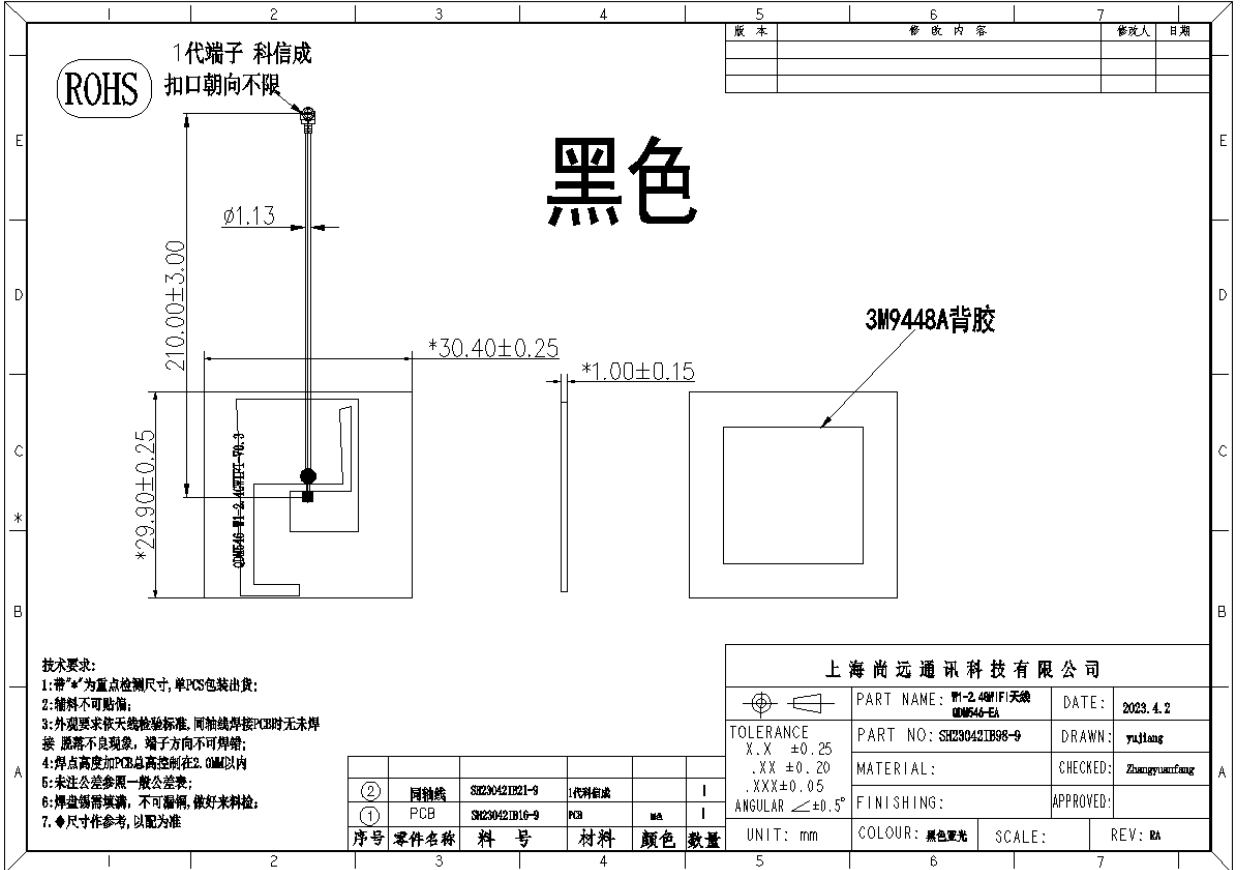
ANT6



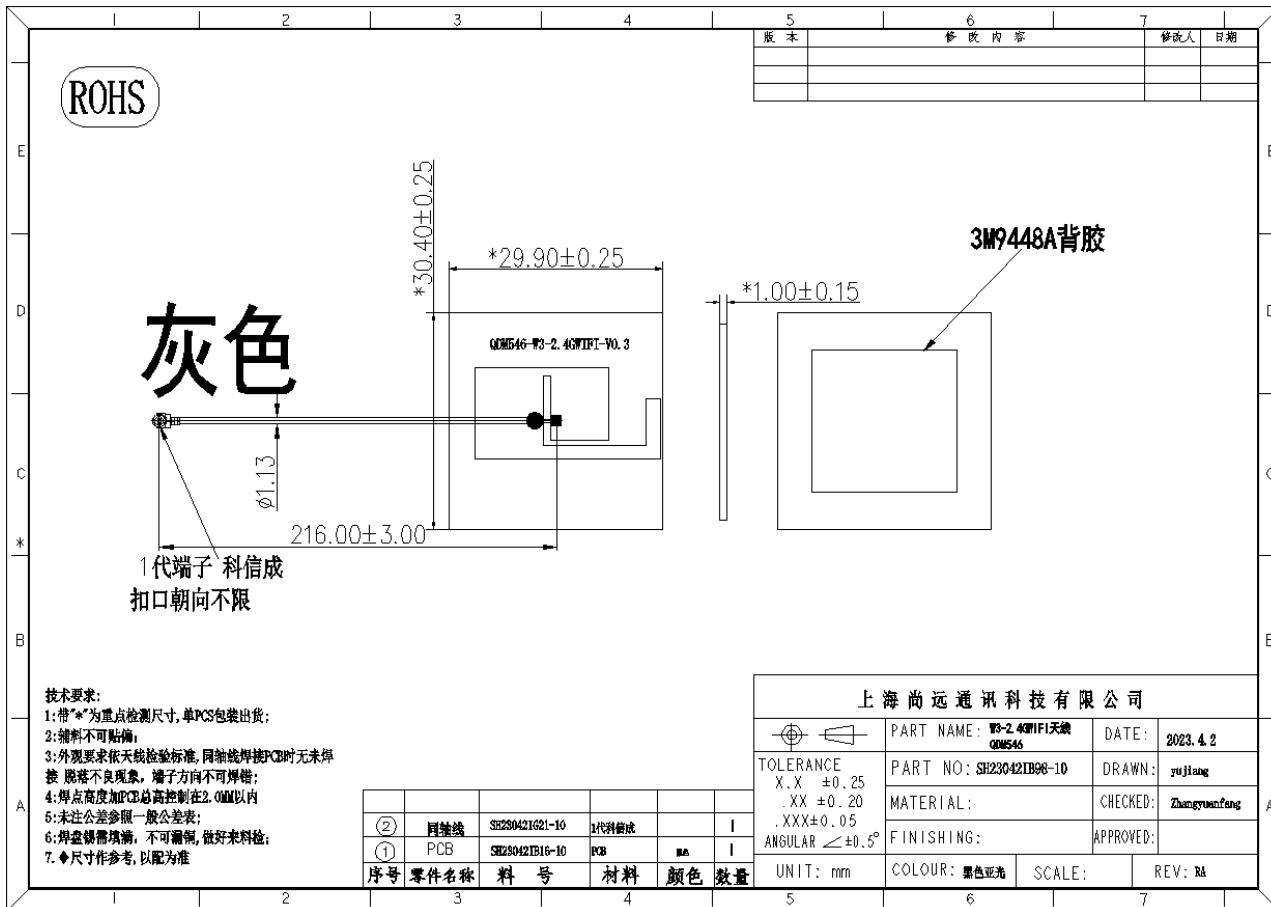
ANT7



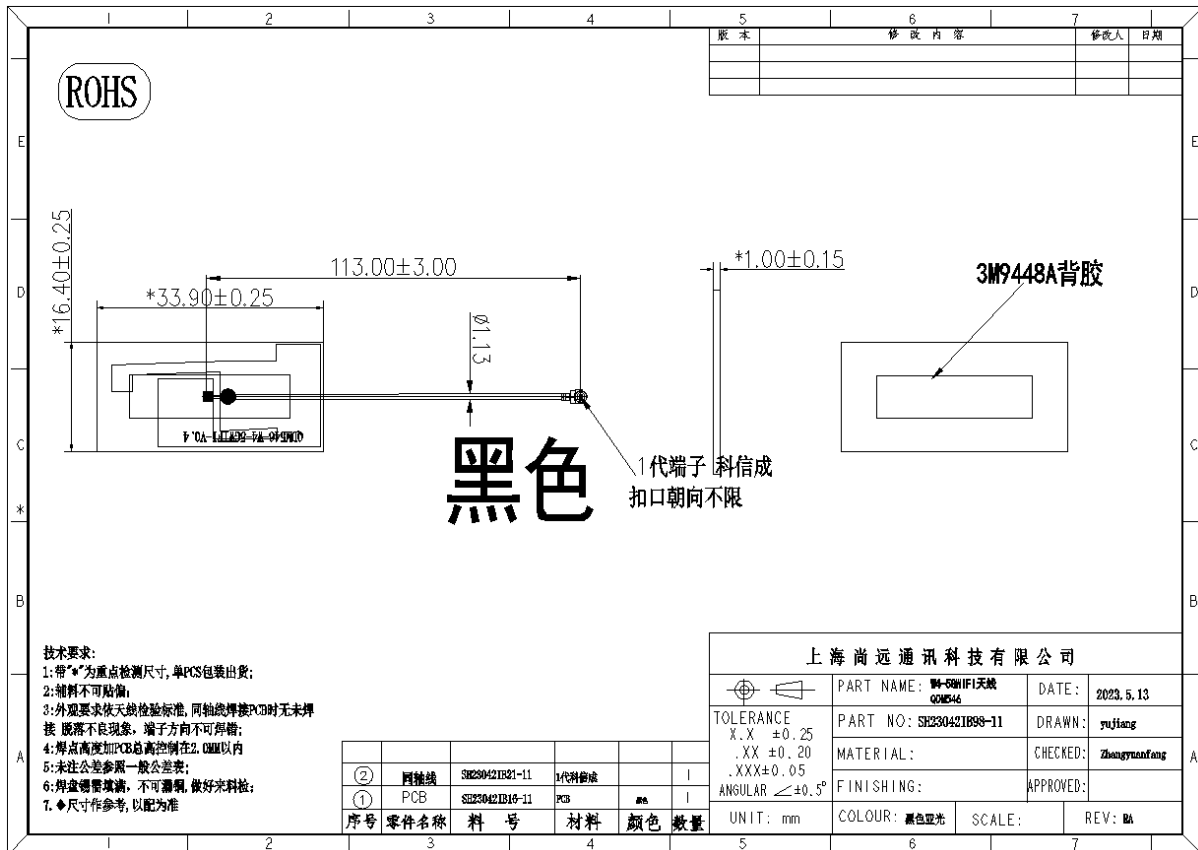
W1



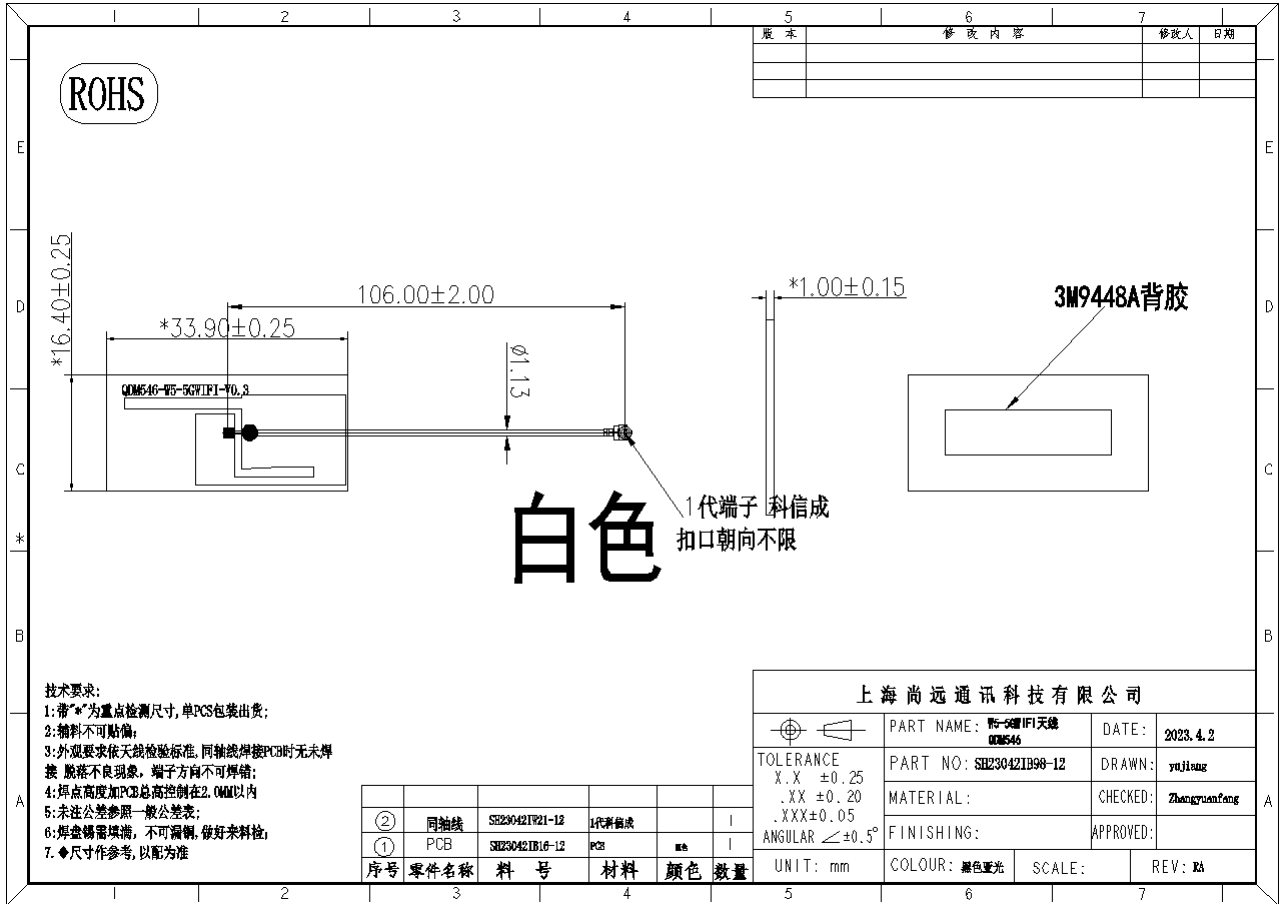
W3



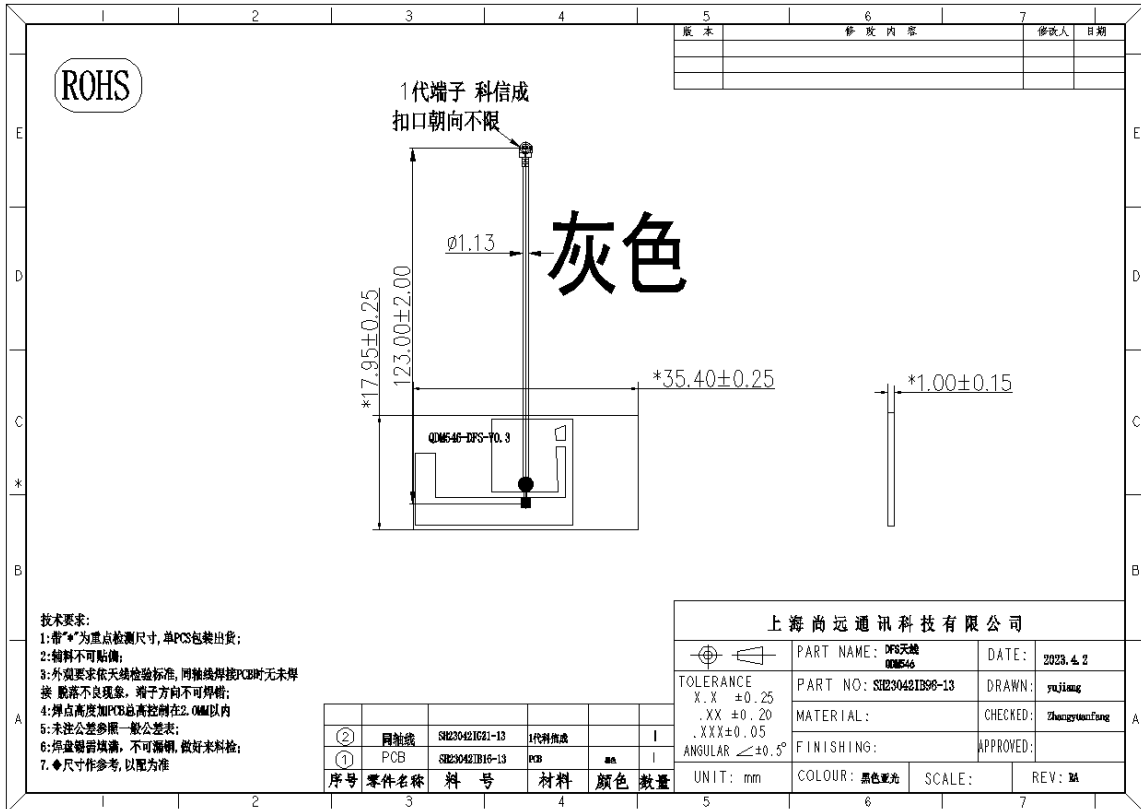
W4



W5



DFS



Dimensions

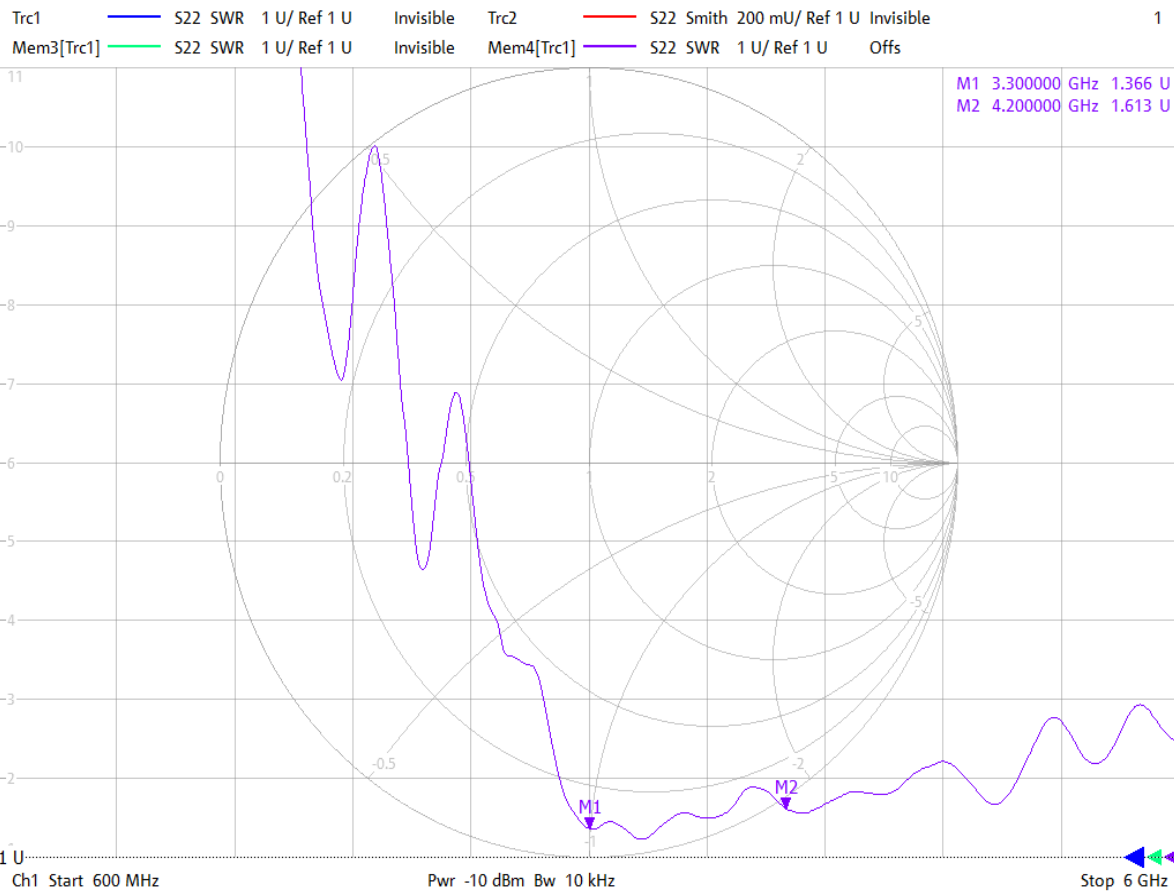
CUSTOMER' S P/N	传音		DRAWING NO	
PREPARED BY	CHECKEDBY	APPROVAL BY	S.R.NO	
			DATE:	

Electric Specifications

TYPE	TR521
Transmitter Frequency	NR :3300-4200MHz
	LTE: 690 - 2690 MHz
	WIFI: 2400-2500Mhz, 5150-5850Mhz
Receiver Frequency	NR : 3300-4200 MHz
	LTE: 1450 - 2690 MHz
	WIFI: 2400-2500Mhz, 5150-5850Mhz
RF-Output Power (E.I.R.P)	NR: 23+/-3dBm
	LTE:23+/-3dBm
Antenna Gain	WCDMA : 1.5dBi
	LTE_B4: 4.21dBi LTE_B5: 3.57dBi LTE_B7:4.85 dBi LTE_B28: 1.55dBi LTE_B66: 4.53dBi NR_B77:4.67dBi NR_B78: 4.67dBi
	2.4GWIFI: 5.87dB 5G WIFI: 5.96dB
Type of Modulation	QPSK-16QAM-64QAM

※ **Antenna**
 ※ **VSWR**
 ANT0

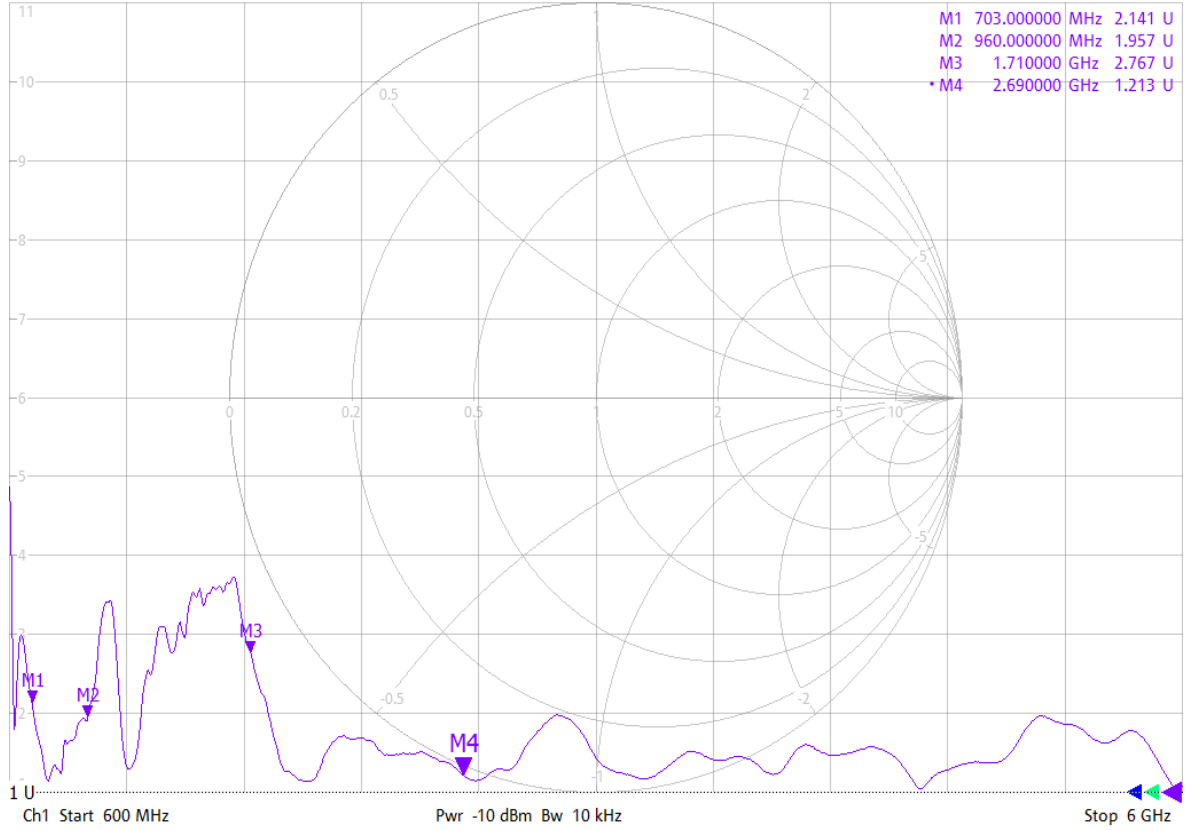
2/16/2023 10:53:22 AM
1328.5170K92-100227-Mv



ANT1

2/16/2023 10:58:01 AM
1328.5170K92-100227-Mv

Trc1 S22 SWR 1 U/ Ref 1 U Invisible Trc2 S22 Smith 200 mU/ Ref 1 U Invisible 1
Mem3[Trc1] S22 SWR 1 U/ Ref 1 U Invisible Mem4[Trc1] S22 SWR 1 U/ Ref 1 U Offs

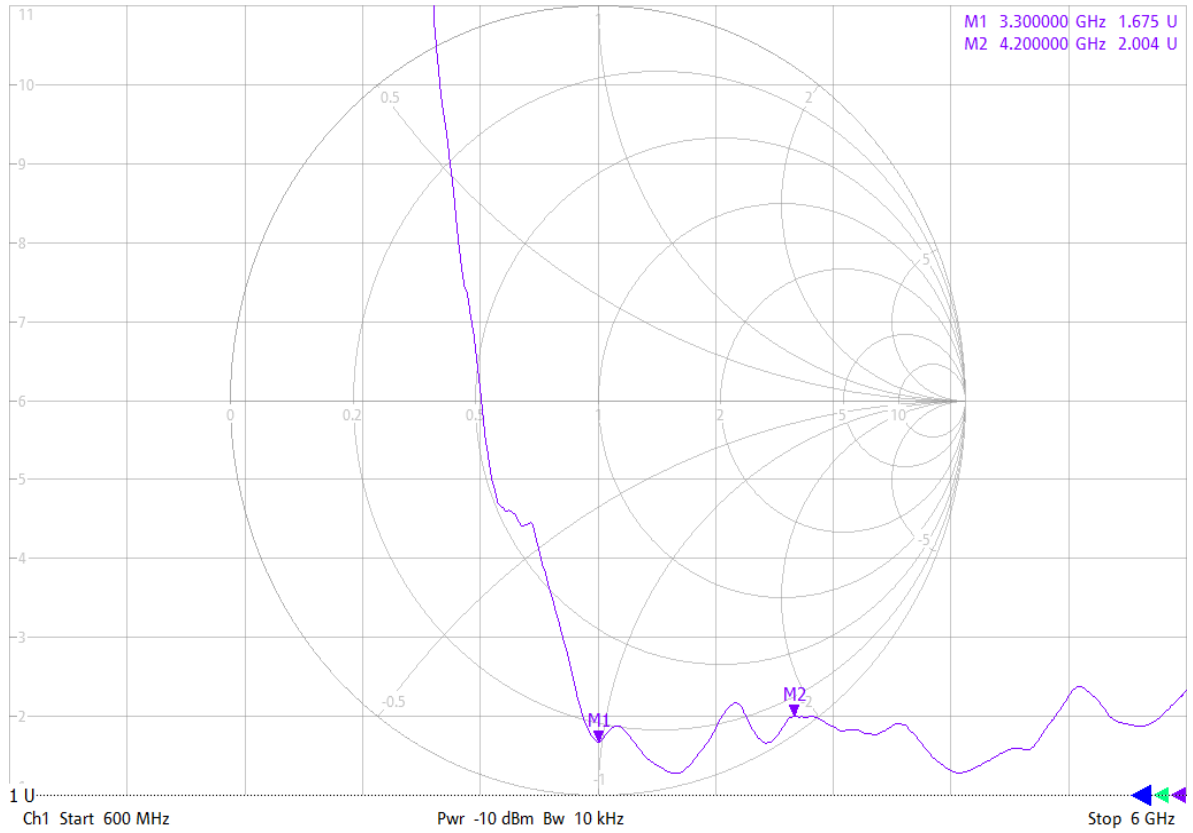


ANT2

2/16/2023 10:47:43 AM
1328.5170K92-100227-Mv

Trc1 S22 SWR 1 U/ Ref 1 U Invisible Trc2 S22 Smith 200 mU/ Ref 1 U Invisible
Mem3[Trc1] S22 SWR 1 U/ Ref 1 U Invisible Mem4[Trc1] S22 SWR 1 U/ Ref 1 U Offs

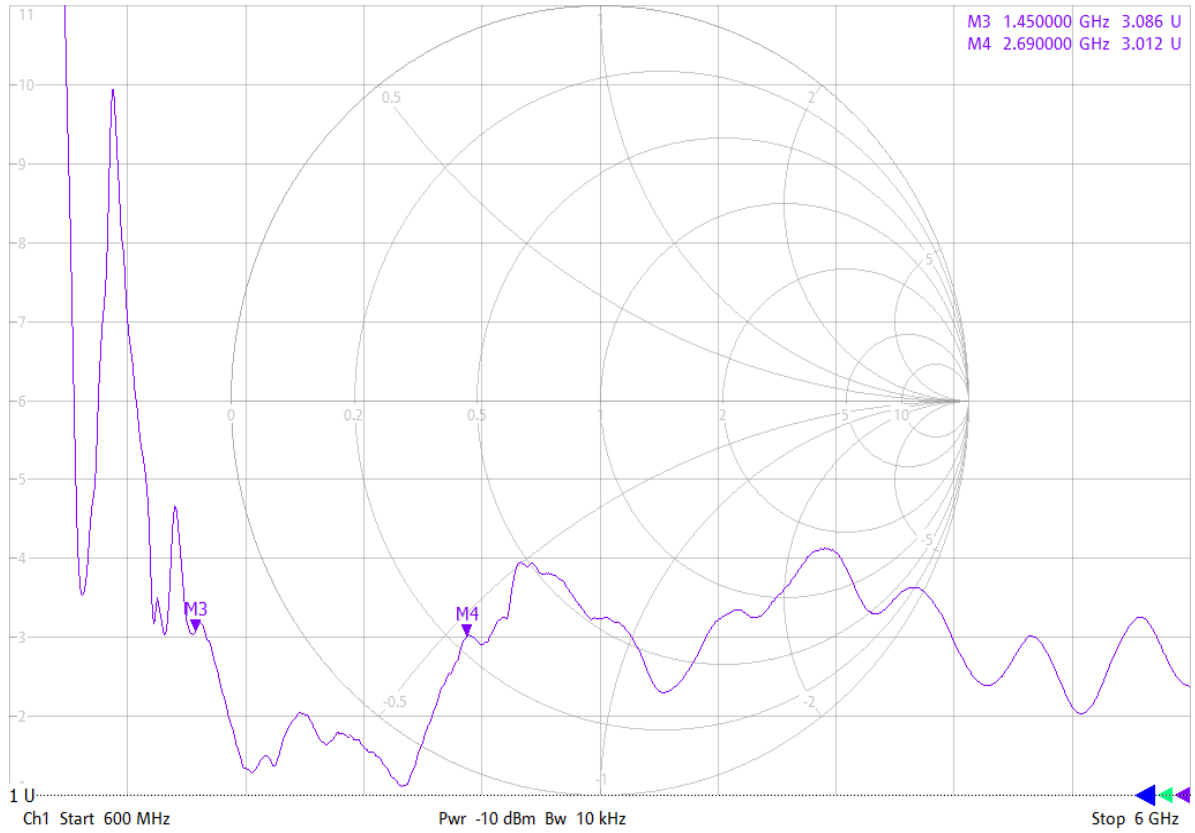
1



ANT3

2/16/2023 10:55:57 AM
1328.5170K92-100227-Mv

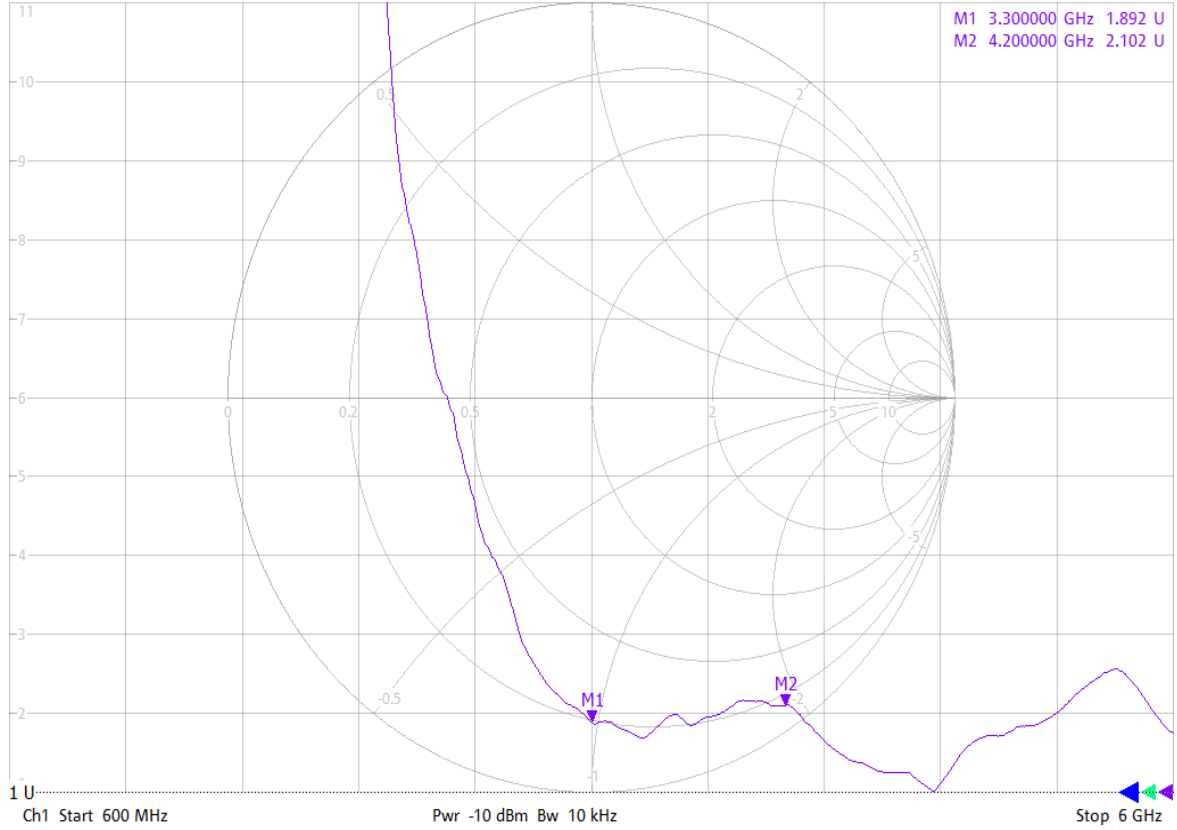
Trc1 S22 SWR 1 U/ Ref 1 U Invisible Trc2 S22 Smith 200 mU/ Ref 1 U Invisible 1
Mem3[Trc1] S22 SWR 1 U/ Ref 1 U Invisible Mem4[Trc1] S22 SWR 1 U/ Ref 1 U Offs



ANT4

2/16/2023 10:48:09 AM
 1328.5170K92-100227-Mv

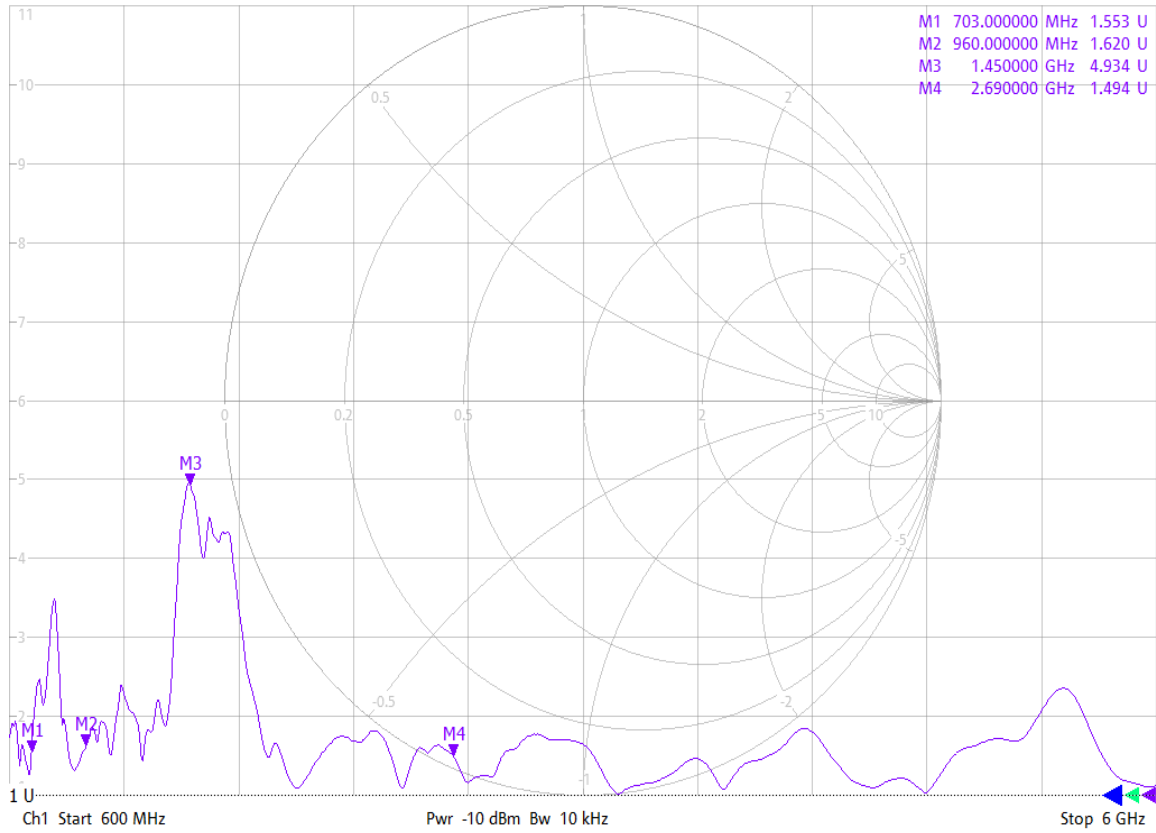
Trc1 S22 SWR 1 U/ Ref 1 U Invisible Trc2 S22 Smith 200 mU/ Ref 1 U Invisible 1
 Mem3[Trc1] S22 SWR 1 U/ Ref 1 U Invisible Mem4[Trc1] S22 SWR 1 U/ Ref 1 U Offs



ANT5

2/16/2023 10:55:07 AM
1328.5170K92-100227-Mv

Trc1 S22 SWR 1 U/ Ref 1 U Invisible Trc2 S22 Smith 200 mU/ Ref 1 U Invisible 1
Mem3[Trc1] S22 SWR 1 U/ Ref 1 U Invisible Mem4[Trc1] S22 SWR 1 U/ Ref 1 U Offs

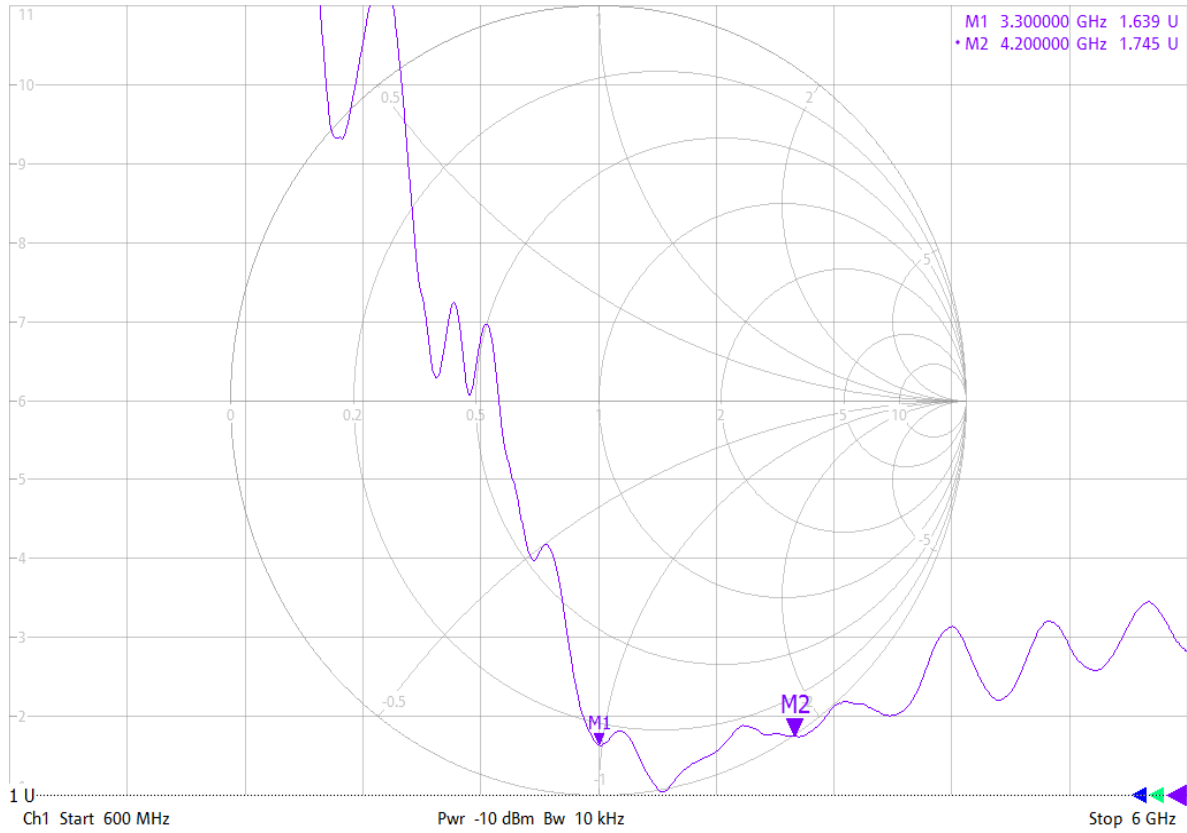


ANT6

2/16/2023 10:57:00 AM
1328.5170K92-100227-Mv

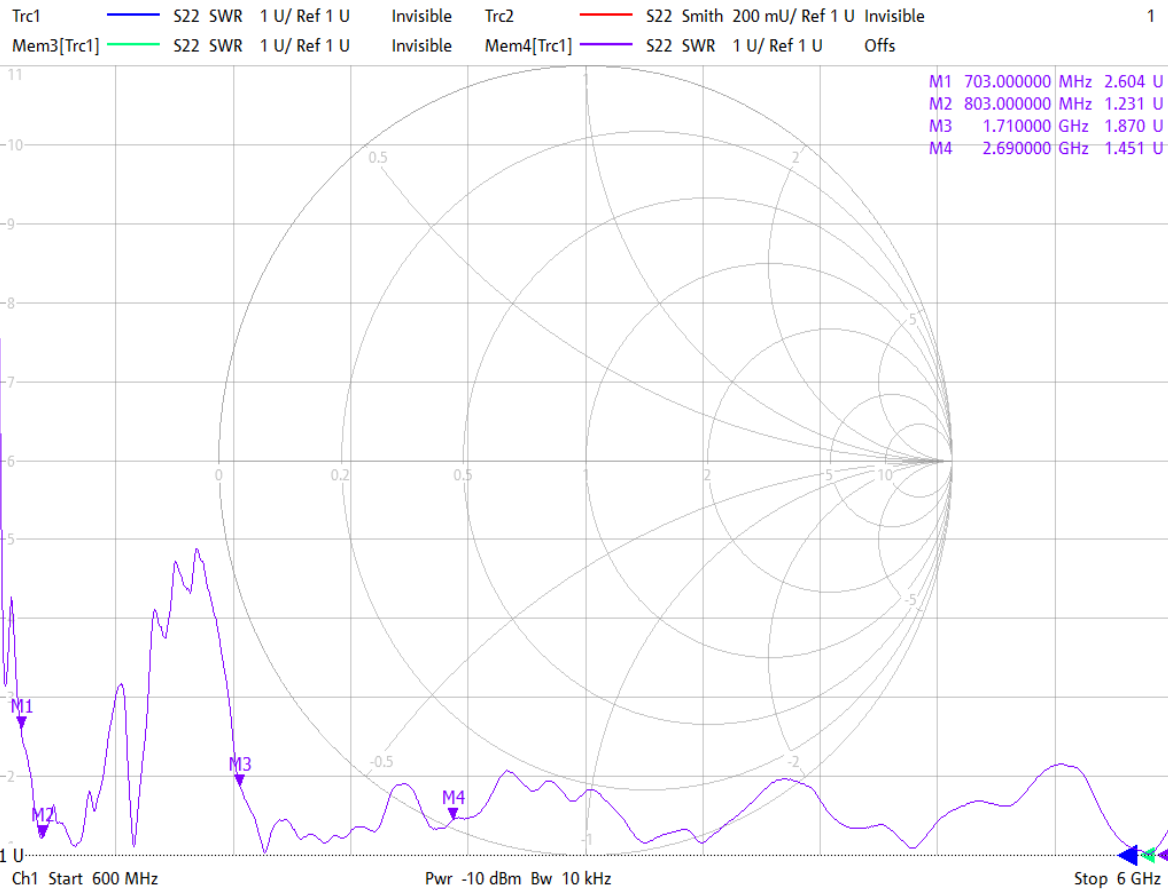
Trc1 S22 SWR 1 U/ Ref 1 U Invisible Trc2 S22 Smith 200 mU/ Ref 1 U Invisible
Mem3[Trc1] S22 SWR 1 U/ Ref 1 U Invisible Mem4[Trc1] S22 SWR 1 U/ Ref 1 U Offs

1



ANT7

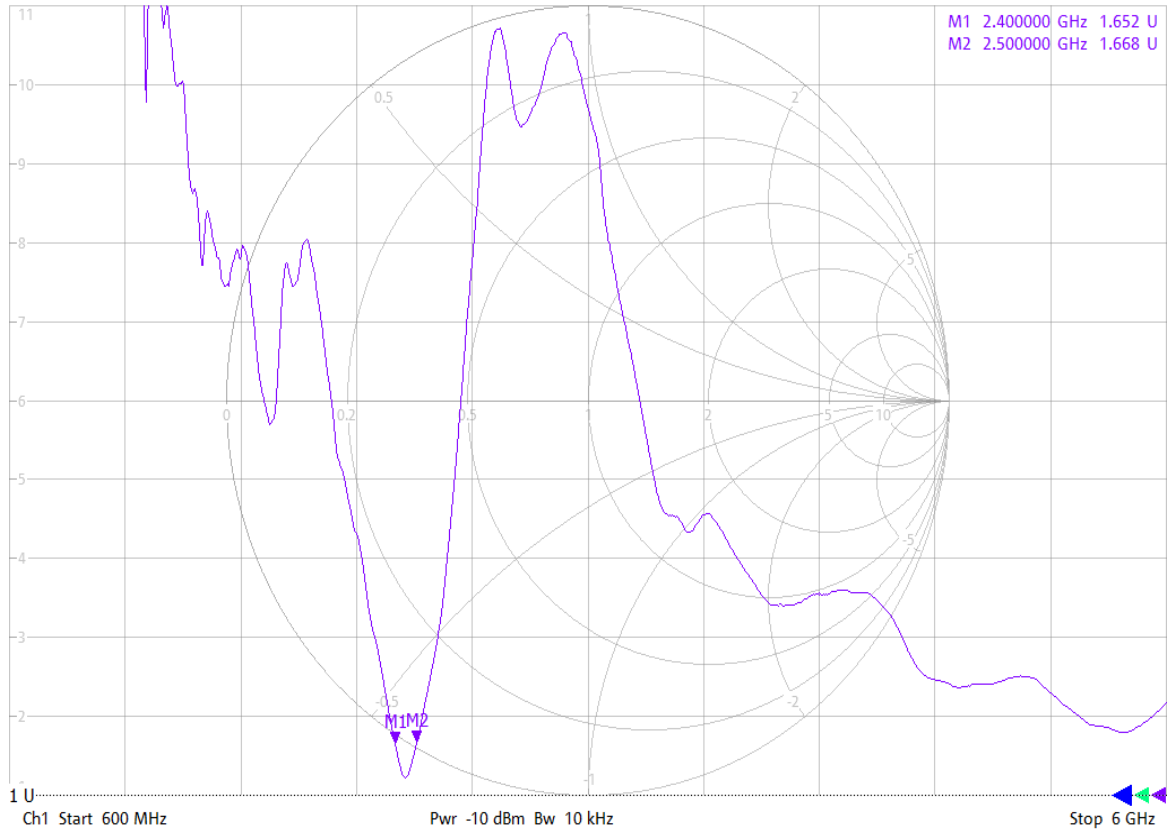
2/16/2023 10:46:47 AM
1328.5170K92-100227-Mv



W1

2/16/2023 10:50:24 AM
1328.5170K92-100227-Mv

Trc1 S22 SWR 1 U/ Ref 1 U Invisible Trc2 S22 Smith 200 mU/ Ref 1 U Invisible 1
 Mem3[Trc1] S22 SWR 1 U/ Ref 1 U Invisible Mem4[Trc1] S22 SWR 1 U/ Ref 1 U Offs

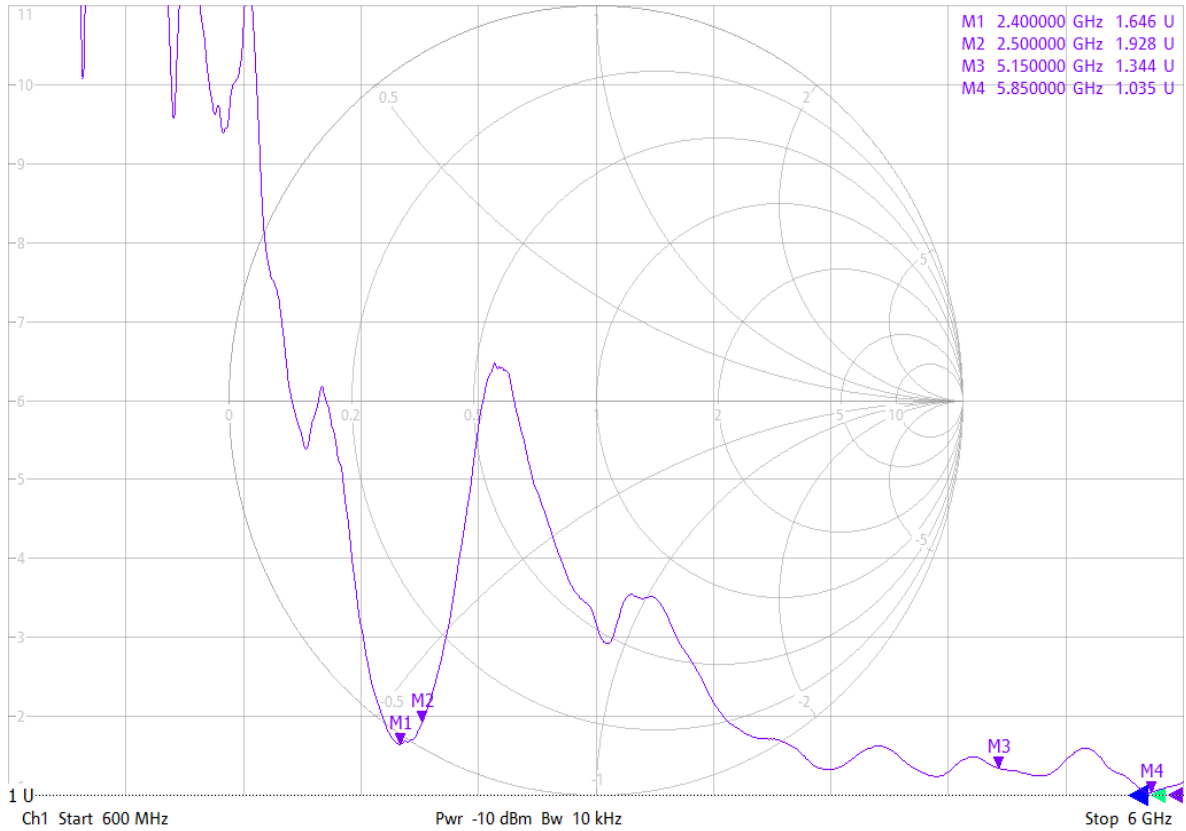


W3

2/16/2023 10:48:56 AM
1328.5170K92-100227-Mv

Trc1 S22 SWR 1 U/ Ref 1 U Invisible Trc2 S22 Smith 200 mU/ Ref 1 U Invisible
Mem3[Trc1] S22 SWR 1 U/ Ref 1 U Invisible Mem4[Trc1] S22 SWR 1 U/ Ref 1 U Offs

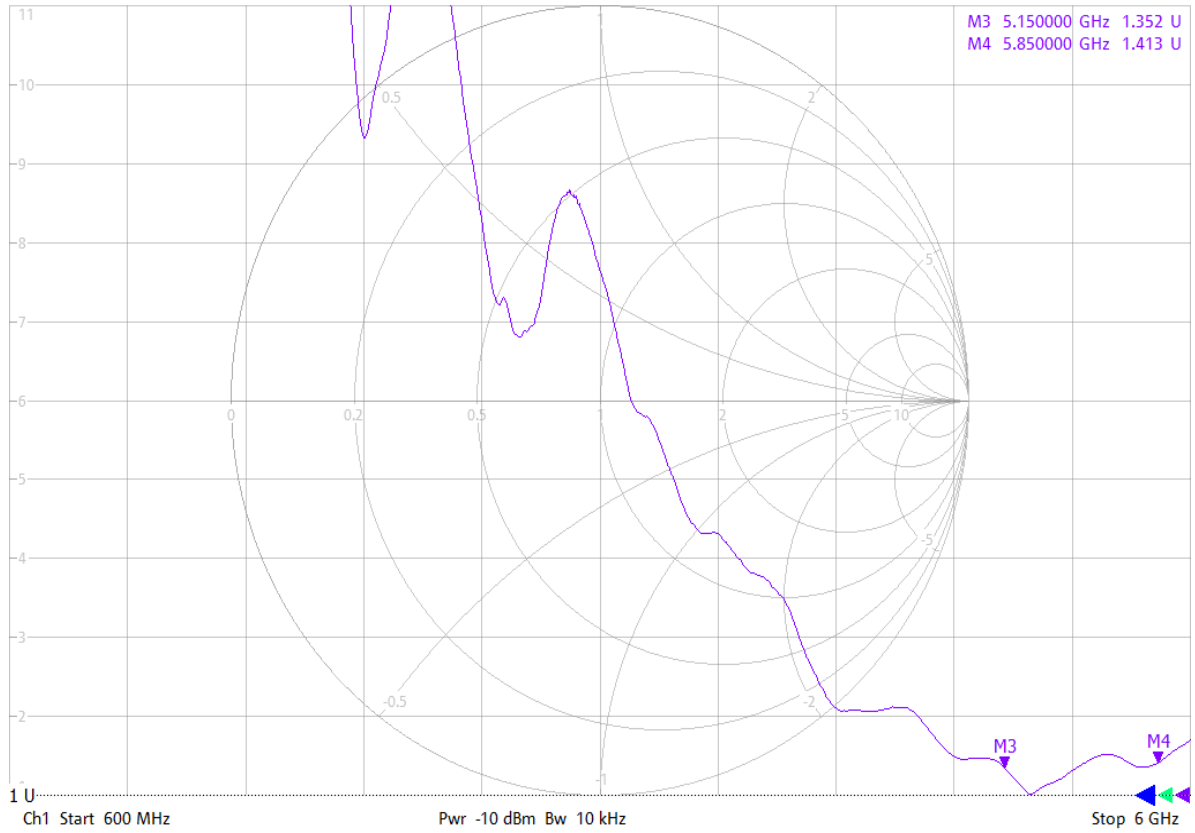
1



W4

2/16/2023 10:50:59 AM
1328.5170K92-100227-Mv

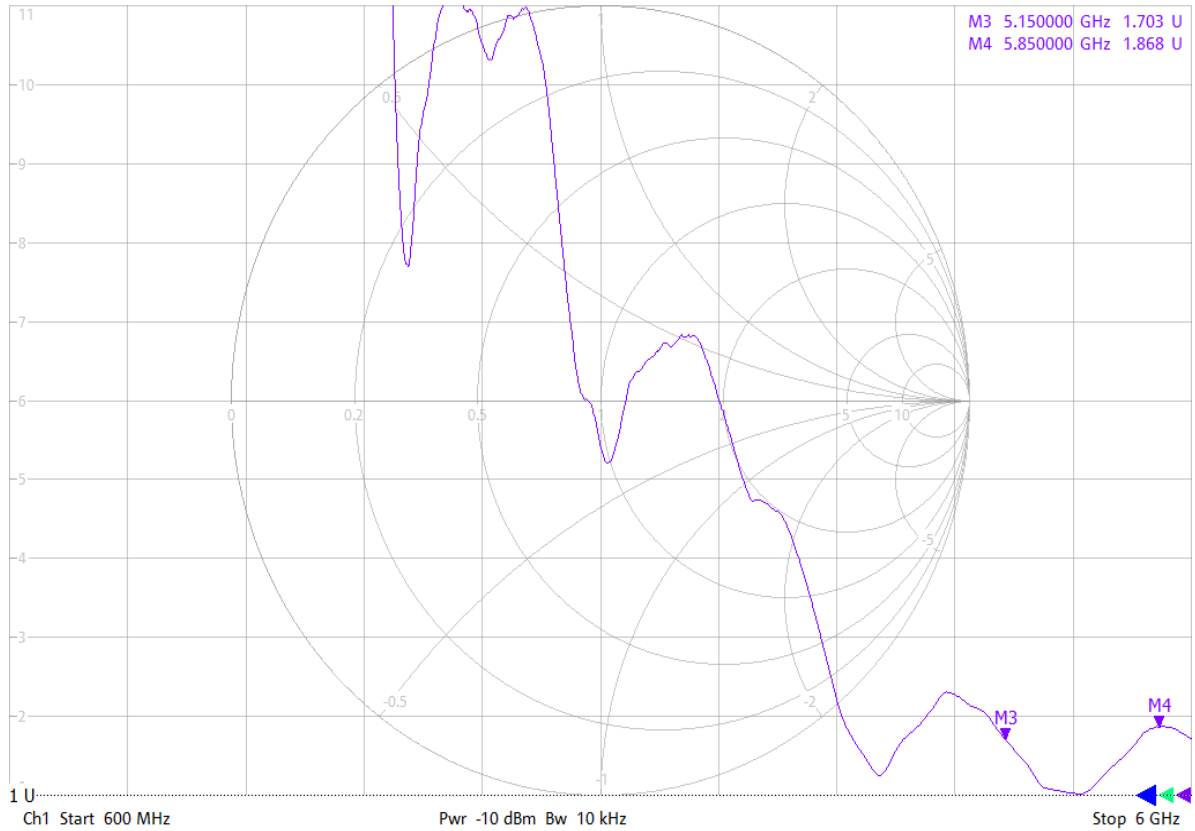
Trc1 S22 SWR 1 U/ Ref 1 U Invisible Trc2 S22 Smith 200 mU/ Ref 1 U Invisible 1
Mem3[Trc1] S22 SWR 1 U/ Ref 1 U Invisible Mem4[Trc1] S22 SWR 1 U/ Ref 1 U Offs



W5

2/16/2023 10:51:46 AM
 1328.5170K92-100227-Mv

Trc1 S22 SWR 1 U/ Ref 1 U Invisible Trc2 S22 Smith 200 mU/ Ref 1 U Invisible 1
 Mem3[Trc1] S22 SWR 1 U/ Ref 1 U Invisible Mem4[Trc1] S22 SWR 1 U/ Ref 1 U Offs



CUSTOMER' S P/N			DRAWING NO	
PREPARED BY	CHECKEDBY	APPROVAL BY	S.R.NO	
贺浪浪			DATE:	2023.07.03