

SPRAY DINOSAUR REMOTE CONTROL CAR



User Manual

MADE IN CHINA

Model:3730A

PRODUCT CONTENTS

English



Remote Control Car



Remote Controller (battery is not included)



Rechargeable Battery for Remote Control Car (Included)



USB charger



Screwdriver

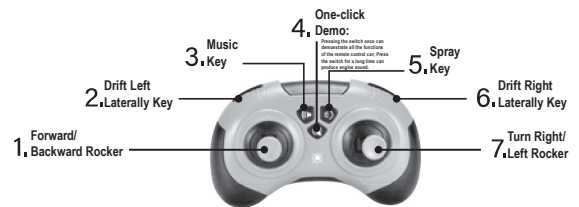


Water Injector



User Manual

REMOTE CONTROL FUNCTIONS



Note:

1. The remote control requires 2 X 1.5V AAA non-rechargeable batteries (not provided).
2. Take out and install the battery: Loosen the main battery compartment screws with screwdriver, open the battery cover, installing or replacing the battery in the correct direction, then close the battery cover, tighten the screws with screwdriver.
3. Turn "ON" the remote control switch to start using.
4. The controllable distance of the remote control is about 65.5 - 98.5 FT.
5. The exhausted batteries should be removed from the remote control. If the remote control is not used for a long time, please take out the batteries.

SPRAY INJECTION INSTRUCTIONS



1.Fill water with water injector.



2.Open the plug and inject water.



3.Close the plug.

Note: If there is no spray, you need to inject water; after injecting water, turn on the dinosaur remote control car switch to start running.

Email:maysida@163.com

FCC Statement

This device complies with part 15 of the FCC rules. Operation is subject to the following two conditions: (1) this device may not cause harmful interference, and (2) this device must accept any interference received, including interference that may cause undesired operation.

Changes or modifications not expressly approved by the party responsible for compliance could void the user's authority to operate the equipment.

NOTE: This equipment has been tested and found to comply with the limits for a Class B digital device, pursuant to part 15 of the FCC Rules. These limits are designed to provide reasonable protection against harmful interference in a residential installation. This equipment generates uses and can radiate radio frequency energy and, if not installed and used in accordance with the instructions, may cause harmful interference to radio communications. However, there is no guarantee that interference will not occur in a particular installation. If this equipment does cause harmful interference to radio or television reception, which can be determined by turning the equipment off and on, the user is encouraged to try to correct the interference by one or more of the following measures:

- Reorient or relocate the receiving antenna.
- Increase the separation between the equipment and receiver.
- Connect the equipment into an outlet on a circuit different from that to which the receiver is connected.
- Consult the dealer or an experienced radio/TV technician for help.

The device has been evaluated to meet general RF exposure requirement. The device can be used in portable exposure condition without restriction.