

# LED display bracelet manual

## Overview

(This product is a Bluetooth APP rechargeable LED display bracelet, suitable for advertising, corporate group building activities, birthday parties, dance DJs, concerts, tour groups, concerts, etc)

### 1. Product information:

Product Name: LED Bluetooth Bracelet

Battery performance: polymer lithium battery

LED screen size: 105 \* 20MM

Input voltage / current: 5V / 1A

Charging type: USB interface charging

Resolution: 5 \* 28 pixels

Connection method: Bluetooth mobile APP

(support Apple IOS system and Android

Android system)

Supported languages: English or numbers

Charging time: 2-3 hours

Use time: 8-10 hours

### 2. Technical characteristics:

The rated capacity of this product is 160mAh;

App control LED display bracelet can display

time, DIY change content, pattern, music

rhythm, call reminder, anti-lost alarm and

other functions;

Ultra long life battery, can reach 500 cycles or more;

Use energy-saving, high-power, long-life LED lamp beads;

Charging protection: The LED display shows the battery charging status when charging, and automatically goes out when fully charged;

**3. Working principle: LED lamp beads are powered by the battery and can be reused after charging.**

**4. Operation:** long press the switch button for three seconds to turn on, long press the switch

again for three seconds to turn off the power;

This product needs to be used with APP

The first step, long press to turn on the LED display and turn on the phone's Bluetooth;

The second step is to open the APP page and click Connect Device;

In the third step, after the device shows that the connection is successful, it can be used together.

Category	Function	Content
Setting mode	language version	Support English or numbers
Display mode	Pattern animation	Multiple animations and support for DIY patterns
	Graffiti editor	Creative graffiti display
Music mode	Display mode	Fixed, move left, move right, move up, move down, blink, reverse font, snowflake
	Music rhythm	Music Mode - Music Rhythm
Time mode	display time	Bluetooth connection synchronization time (double-tap the switch to display the time)
Anti-lost mode	Alarm function	Automatic alarm when the bracelet leaves the mobile phone 15-20 meters (the bracelet vibrates for 3 seconds)

### 5. matters needing attention:

After being fully charged, please cut off the power in time to protect the battery life;

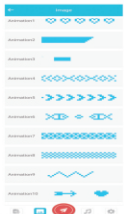
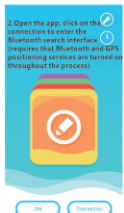
Prohibit the use of over-chargers (such as 9V / 2A, 12V / 2A, 5V / 3A, etc.) to maintain safe charging operation;

Do not use this product while charging, as it may burn LED lights or internal charging components of the power supply;

Do not expose this product to rain or moisture.



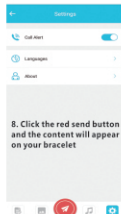
5. Now you can enter what you want



6. Various dynamic patterns displayed by the system



7. Music rhythm mode



8. Click the red send button and the content will appear on your bracelet

This device complies with Part 15 of the FCC Rules. Operation is subject to the following two conditions: (1) this device may not cause harmful interference, and (2) this device must accept any interference received, including interference that may cause undesired operation

NOTE: This equipment has been tested and found to comply with the limits for a Class B digital device, pursuant to Part 15 of the FCC Rules. These limits are designed to provide reasonable protection against harmful interference in a residential installation. This equipment generates, uses and can radiate radio frequency energy and, if not installed and used in accordance with the instructions, may cause harmful interference to radio communications. However, there is no guarantee that interference will not occur in a particular installation.

If this equipment does cause harmful interference to radio or television reception, which can be determined by turning the equipment off and on, the user is encouraged to try to correct the interference by one or more of the following measures:

- Reorient or relocate the receiving antenna.
- Increase the separation between the equipment and receiver.
- Connect the equipment into an outlet on a circuit different from that to which the receiver is connected.
- Consult the dealer or an experienced radio/TV technician for help.

Warning: changes or modifications not expressly approved by the party responsible for compliance could void the user's authority to operate the equipment