

Troubleshooting –

In case of trouble with the unit, please look through this chart and see if you can solve the problem by yourself before calling the Service Center –

	PROBLEM	CAUSE	SOLUTION
WHOLE UNIT	Power does not come on when the power switch is pressed	Unit is Unplugged	Connect the unit to the power adaptor supplied with the product
	No sound comes out of the speakers	The volume is turned down to low level. The input selector does not match the playback/source	Adjust the volume. Re-select the desired input source.
	The Sound is noisy	The unit is too close to a TV Set or another such device	Turn off the TV or other appliance or re-locate the Jukebox device
USB	Unable to read USB song content	The USB disk may be corrupted or the song format may not be compatible	Format USB on your computer or check the song file format

Unit Specifications –

Speaker –

Output Power: 2 Watts x 2

Impedance – 4 Ohms

Input Power: Max 3 Watts

USB Channel voltage: DC 5V

General --- Power: AC ADAPTOR INPUT: AC100V-240V / 50/60Hz
OUTPUT: DC 9V 1.0A

Power Consumption: 9Watts

Net weight: 3.05 kg

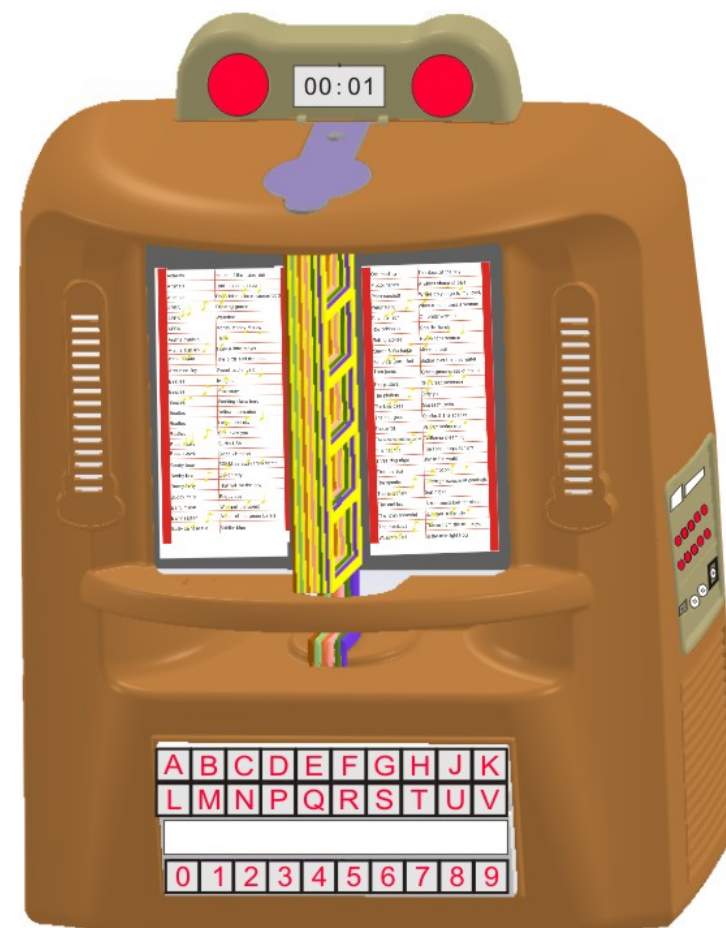
Unit Dimension (W*H*D): 315mm X 390mm X180 mm (approx)

Package Contents

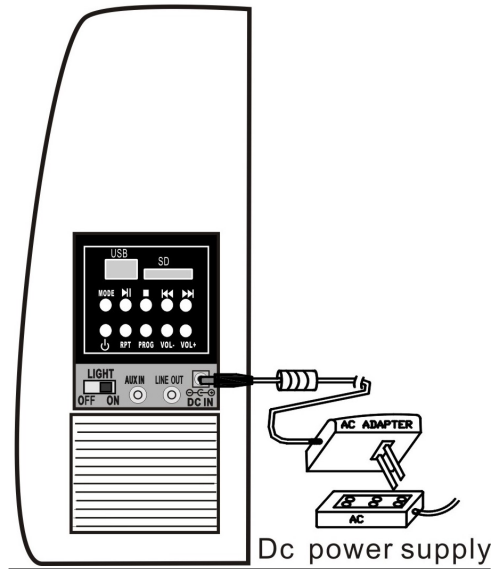
- Vintage Jukebox
- Power Adaptor
- AUX Cable
- Instruction Manual

Note: other warning labels are on the back cover of the machine.

OPERATING INSTRUCTIONS



The ac adapter power supply



Baby unplug the power adapter plug is prohibited



Wet hand operation is prohibited

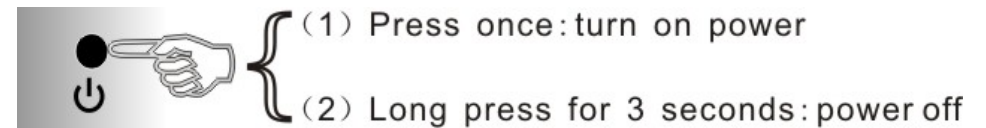
The operation of storing the computer's songs on a USB flash drive



1. The first step is to rename the song you want to copy to your USB drive.
2. Rename method: add the number 001-200 before the song track name.
3. Copy or move method: According to the renaming order in the computer (001-200), start a single copy (move one song after another to the USB flash disk), copy or move order: directory number from small to large

Note: when copying a song from a computer to a USB or SD card, You have to go from the smallest to the largest, Copy one song and then copy the next, You can't copy it all at once (Including simultaneous copying of more than 2 songs)

Power switch button operation method



Click press to turn on the power;Long press for 3 seconds after power off.

Key function operation

A	B	C	D	E	F	G	H	J	K
L	M	N	P	Q	R	S	T	U	V
0	1	2	3	4	5	6	7	8	9

Buttons	Song sequence	Buttons	Song sequence
A+1	1	G+1	61
.
A+9	9	G+9	69
A+0	10	G+0	70
B+1	11	H+1	71
.
B+9	19	H+9	79
B+0	20	H+0	80
C+1	21	J+1	81
.
C+9	29	J+9	89
C+0	30	J+0	90
D+1	31	K+1	91
.
D+9	39	K+9	99
D+0	40	K+0	100
E+1	41	L+1	101
.
E+9	49	L+9	109
E+0	50	L+0	110
.
F+1	51	V+1	191
F+9	59	V+9	199
F+0	60	V+0	200

Precautions – Safety Information –

CAUTION:

1. Use of controls and adjustments or performance of procedures other than those specified here, may result in hazardous radiation exposure.
2. If this product develops trouble, contact a qualified service center, and do not use the product in a defective state.

Safety Precautions

WARNING:

To reduce the risk of fire or electric shock, do not expose this appliance to rain or moisture.

CAUTION:

Use of controls or adjustments or performance of procedures other than those specified may result in hazardous radiation exposures.

CAUTION

RISKS OF ELECTRIC SHOCK- DO NOT OPEN!

To reduce the risk of electric shock, do not remove cover or back.

No user serviceable parts inside. Refer servicing to qualified service personnel.



The light flash with arrowhead symbol, within an equilateral triangle, is intended to alert user to the presence of no insulated "dangerous voltage" within the product's enclosure that may be of sufficient magnitude to constitute risk of electric shock to persons.



The exclamation point within an equilateral triangle is intended to alert user to the presence of important operating and maintenance (servicing) instructions in the literature accompanying the appliance.

See Markings on the back of the unit –

CAUTION:

To prevent electric shock, match wide blade of plug to wide slot, fully insert.

IMPORTANT SAFETY INSTRUCTIONS

1. Read Instructions – All the safety and operating instructions should be read before the product is operated.
2. Retain Instructions – The safety and operating instructions should be retained for future reference.
3. Heed Warnings – All warnings on the product and in the operating instructions should be followed.
4. Follow all instructions – All operating and user instructions must be followed.
5. Cleaning – Unplug this product from the wall electric socket before cleaning. Do not use liquid cleaners or aerosol cleaners. Use a damp cloth for cleaning.
6. Attachments – Do not use attachments not recommended by the product manufacturer as they may cause hazards.
7. Water & Moisture – Do not use this product near water – For example, near Bath tub, wash bowl, kitchen sink or laundry tub, or near swimming pool etc.
8. Do not place this product on an unstable stand, tripod, bracket or table.
9. Ventilation – Slots and openings in the cabinet are provided for ventilation, to ensure reliable operation of the product and to protect it from overheating. These openings must not be blocked or covered. The openings should never be blocked by placing the product on a bed, sofa, rug, or similar surface. This product should not be placed in a built-in installation such as a bookcase or rack unless proper ventilation is provided or the manufacturer's instructions have been adhered to.
10. Power Source – This product should be operated only from the type of power source indicated on the marking label. If you are not sure of the type of power supply to your home, consult your product dealer or local power company.
11. Power Cord Protection – Power supply cords should be routed so that they are not likely to be walked on or by items placed upon or against them, paying particular attention to cords at plugs, convenience receptacles, and the point where they exit from the product.
12. Lightning – For added protection for this product, during a lightning storm or when it is left unattended and unused for long period of time, unplug it from the wall outlet. This will prevent damage to the product due to lightning and power-line surges.
13. Overloading – Do not overload the wall electric socket, extension cords as this can result in a risk of fire or electric shock.
14. Do not attempt to service this product yourself as opening or removing covers may expose you to dangerous voltage or other hazards. Refer all servicing to qualified service personnel.
15. The product should be placed away from heat sources such as radiators, stoves or other products (including amplifiers) that produce Heat.

Digital audio player control panel (front button):

1. After the boot, won't automatically play songs.
 2. After each power back up, the track will be re-selected before playing again
 3. If you do not repeat the selection of other songs to play, the machine will stop after playing this song.
 4. At the same time, press a letter button and a number button to select the desired song(Please refer to the chart on page 9 of this book).
 - (1) For example, if you want to select the third song, first press the "A" button and then press the "3" button.
 - (2) For example, if you want to select the 12 song, first press the "B" button and then press the "2" button.
 - (3) For example, if you want to select the 21 song, first press the "C" button and then press the "1" button.
 - (4) For example, if you want to select the 32 song, first press the "D" button and then press the "2" button.
 - (5) For example, if you want to select the 45 song, first press the "E" button and then press the "5" button.
 - (6) For example, if you want to select the 50 song, first press the "E" button and then press the "0" button.
 - (7) For example, if you want to select the 67 song, first press the "G" button and then press the "7" button.
 - (8) For example, if you want to select the 78 song, first press the "H" button and then press the "8" button.
 - (9) For example, if you want to select the 80 song, first press the "H" button and then press the "0" button.
 - (10) For example, if you want to select the 91 song, first press the "K" button and then press the "1" button.
 - (11) For example, if you want to select the 100 song, first press the "K" button and then press the "0" button.
 - (12) 101 songs to 200 songs operate the same way as the previous 100 songs.
- Note:** please refer to the chart on page 9 of this book for the song serial number corresponding to the letter button and number button.

Right side control button operation instructions

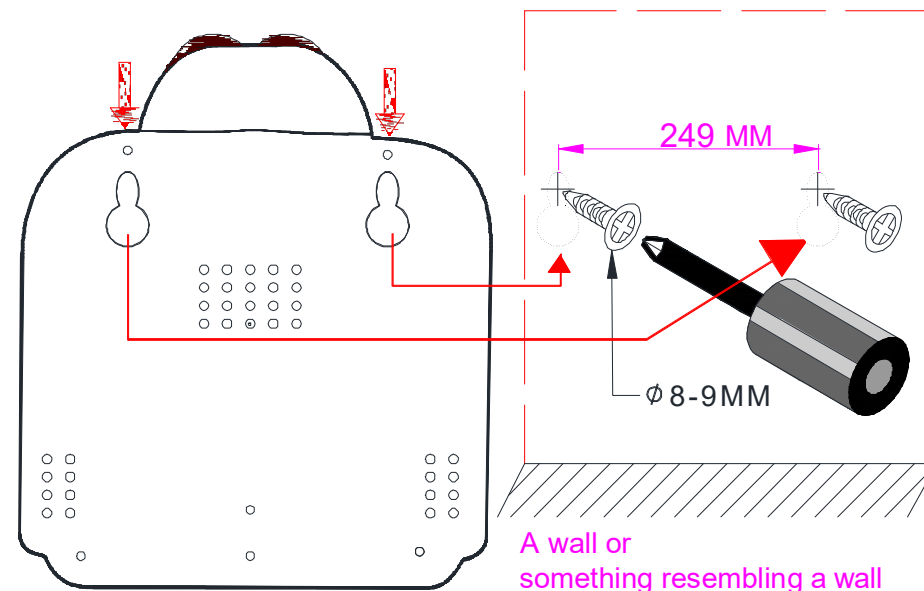
Power button: After the Power is plugged in, click the button to start up and the "LCD display light "will light up.

1. Press **"Mode"** button until led display indicate " USB or SD", then display will show number of folder, then number of songs and start playback.
2. Press **▶|| "Play/Pause"** button: during the music playback, press once to Pause the playback of music, and then press again to restore the playback state.
3. Press **■ "STOP"** button: in the process of playing music, press once to STOP playing music.
4. Press **▶▶| Next** or **◀◀ Prev** to select your desire song.
5. Press **"RPT"** once to repeat one song, the REP indication at the top left corner on the led display will flash; Press **"RPT"** one more time to repeat all songs in the track and the REP indication at the top left corner on the led display will appear. Press **"RPT"** again to cancel repeat function.
6. Press **"RROG"** For programming. press **"STOP"** button to stop playback. Press **"PROG"** to enter programming mode. The led display will flash and indicate "P 01", select the song that you want to program and then press **"PROG"** again. Press **"Play/Pause"** to stop programming and start to playback the programmed songs. This unit can program up to 20 songs.
7. Press **"VOL-"** button: press once to attenuate the first level of volume until the ear can not hear the sound.
8. Press **"VOL+"** button: press once to upgrade the volume, Until the ear feels the sound is loud enough.

Note:

- a. the control buttons are illustrated on page 7 of this book.
- b. You can program 100 songs or 200 songs into the USB or SD card. Select one of the songs to play quickly through the button function in front of the product. And the song list can be updated and replaced (taken out and put in from the top). (Up to 200 songs can be arranged) .
- c. The song sequence programming method is explained on page 11 of this book.

Hang a wall to operating instructions



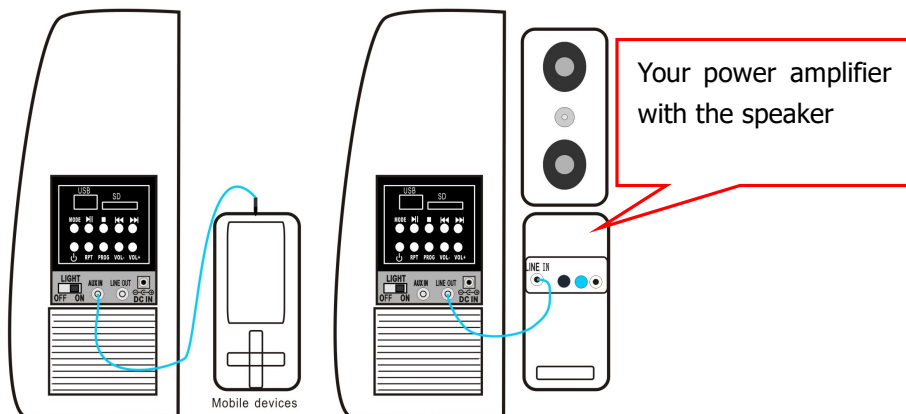
1) If you need to hang on the wall, For example, USES the appropriate screw (about KA4x22MM), Choose to suit the metope of height, Choose a suitable distance measuring tool, to determine the location of the screws.

2) Preparation work finished, the machine can be hung on the wall.

LISTENING TO AUX-IN and LINE OUT (If equipped with, please refer to the;If not, ignore) :

Inserted the audio cable a jukebox "LINE OUT" jack, audio signal through the connection to an external amplifier device through the left/right channel.

After the connection is successful, through the external power amplifier plays music

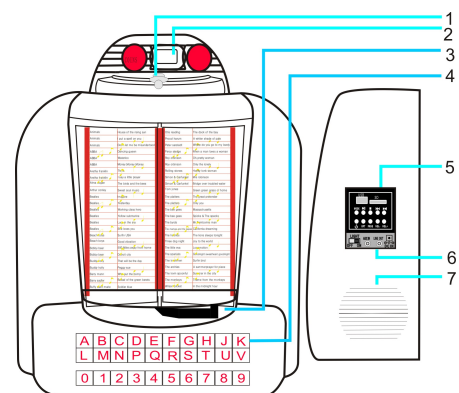


1.You have the option to use the line out ports to connect an external amplifier device, and the option to connect your own external power amplifier speakers.

2.If you don't need external power amplifier, please remove cable, can through the jukebox play music.

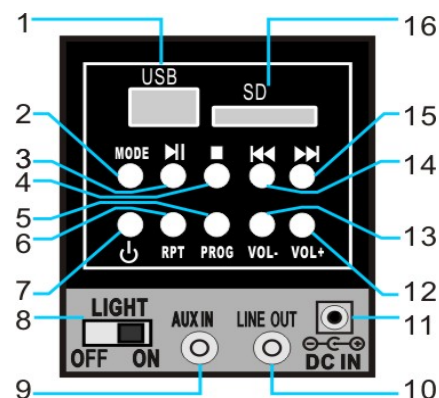
Note:Does not need external devices music, please pull out the auxiliary cable.Do not pull out, other functions cannot be used.

Description of Parts



- (1) The lid on top
- (2) LCD display
- (3) Song list stents and browse the panel
- (4) Digital audio player name plate panel(ABBA 200 programmed songs)
- (5) Function Key Panel
- (6) DC input socket,Line out, Aux in.
- (7) Speaker L+R

Digital audio player control panel



- 1) USB input socket
- 2) MODE
- 3) ►|| Play/Pause
- 4) ■ Stop
- 5) PROG:Program
- 6) RPT:Repeat

- 7) Power(off/on);Long press for 3 seconds after power off.
- 8) Light switch (ON/OFF)
- 9) AUX IN
- 10) LINE OUT
- 11) DC IN-9V 1A
- 12) VOL+(Increase the volume)
- 13) VOL-(Reduce the volume)
- 14) ◀◀ (BACK/Fast rewind)
- 15) ▶▶ (NEXT/Fast forward)
- 16) SD input socket

Note: the control buttons are detailed on page 10 of this book.

Caution:

This device complies with Part 15 of the FCC rules and Industry Canada license-exempt RSS standard(s). Operation is subject to the following two conditions: (1) this device may not cause harmful interference, and (2) this device must accept any interference received, including interference that may cause undesired operation.

The manufacturer is not responsible for any radio or TV interference caused by unauthorized modifications or change to this equipment. Such modifications or change could void the user's authority to operate the equipment.

This radio transmitter (identify the device by certification number or model number if Category II) has been approved by Industry Canada to operate with the antenna types listed below with the maximum permissible gain indicated. Antenna types not included in this list, having a gain greater than the maximum gain indicated for that type, are strictly prohibited for use with this device.

This equipment has been tested and found to comply with the limits for a Class B digital device, pursuant to part 15 of the FCC Rules. These limits are designed to provide reasonable protection against harmful interference in a residential installation. This equipment generates, uses and can radiate radio frequency energy and, if not installed and used in accordance with the instructions, may cause harmful interference to radio communications. However, there is no guarantee that interference will not occur in a particular installation. If this equipment does cause harmful interference to radio or television reception, which can be determined by turning the equipment off and on, the user is encouraged to try to correct the interference by one or more of the following measures:

- Reorient or relocate the receiving antenna.
- Increase the separation between the equipment and receiver.
- Connect the equipment into an outlet on a circuit different from that to which the receiver is connected.
- Consult the dealer or an experienced radio/TV technician for help.

The device has been evaluated to meet general RF exposure requirement.

To maintain compliance with FCC's RF exposure guidelines, this equipment should be installed and operated with a minimum distance of 20cm between the radiator and your body.