

# Portable Thermal Printer

## User Manual

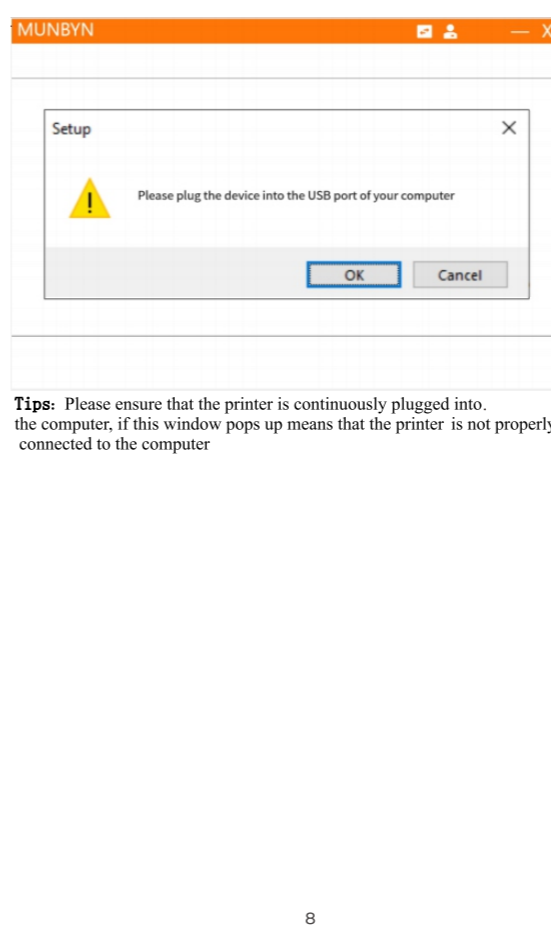
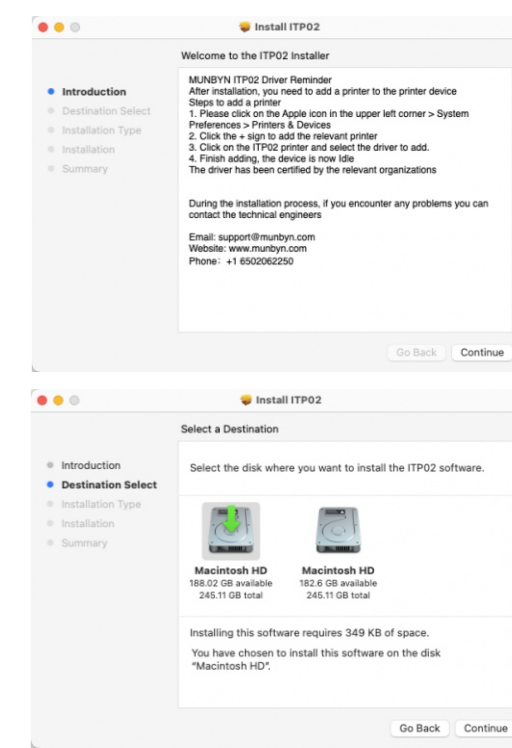


Unleash Business Creativity ITP02

**MUNBYN**  
Unleash Business Creativity

### 2.4.2. Mac Driver Installation

Downloaded software from the web address or insert the USB flash drive into the computer, open the driver installation package, click the .dmg file of the Mac computer, and follow the steps below to install



**Tips:** Please ensure that the printer is continuously plugged into the computer, if this window pops up means that the printer is not properly connected to the computer

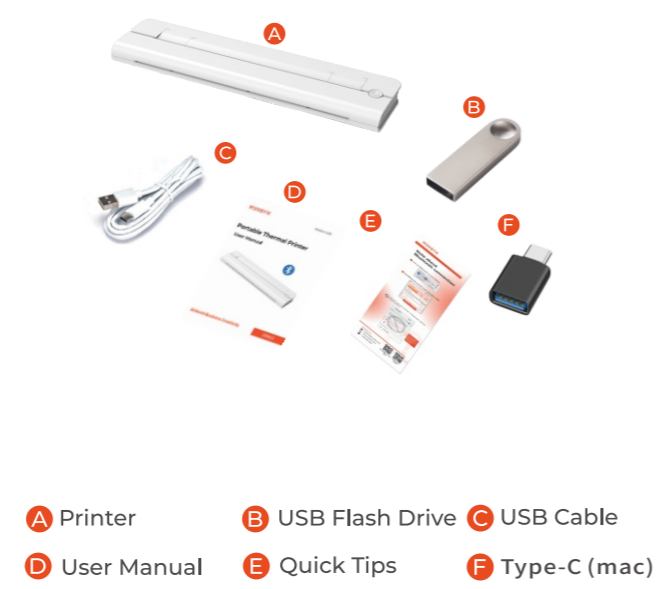
## Contents

- 01 Product Introduction ..... 01
  - 1.1 What's in the package? ..... 01
  - 1.2 Printer Overview ..... 02
- 02 Set Up The Printer ..... 03
  - 2.1 Quick printer connection ..... 03
  - 2.2 Bluetooth connection for ..... 04
  - 2.3 Smartphone/Tablet ..... 05
    - 2.3.1 Connect the printer through the Munbyn Print APP ..... 05
  - 2.4. USB connection for Laptop/PC ..... 06
    - 2.4.1. Windows Driver Installation ..... 07
    - 2.4.2. Mac Driver Installation ..... 08
- 03 Pro Tips ..... 14
- 04 Feeder Button instruction ..... 15
- 05 LED Status ..... 15
- 06 Feeder Button Instruction ..... 15
- 07 Specification ..... 16
- 08 Safety Notices ..... 17
- 09 FCC Statement ..... 18
- 10 Tech Support ..... 19

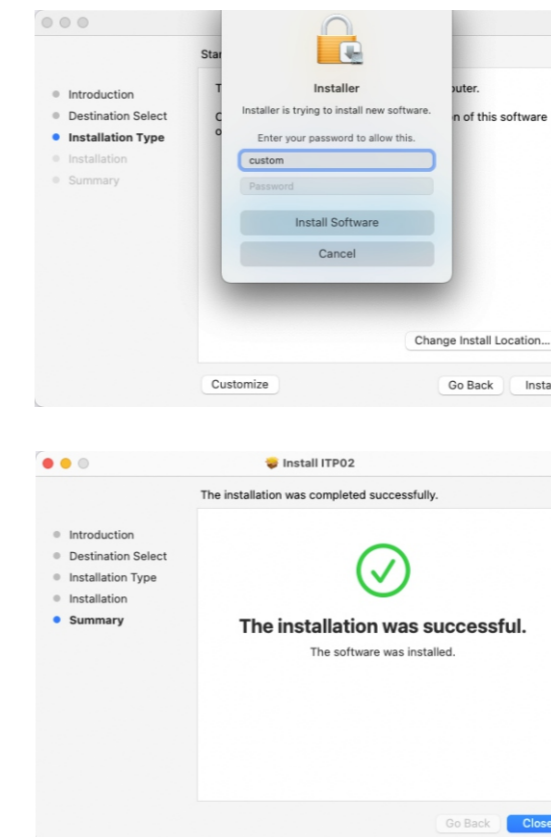
Deutsches Benutzerhandbuch / Manual de usuario en español / Manuel d'utilisation en français / 日本語のユーザーマニュアル

## 01 Product Introduction

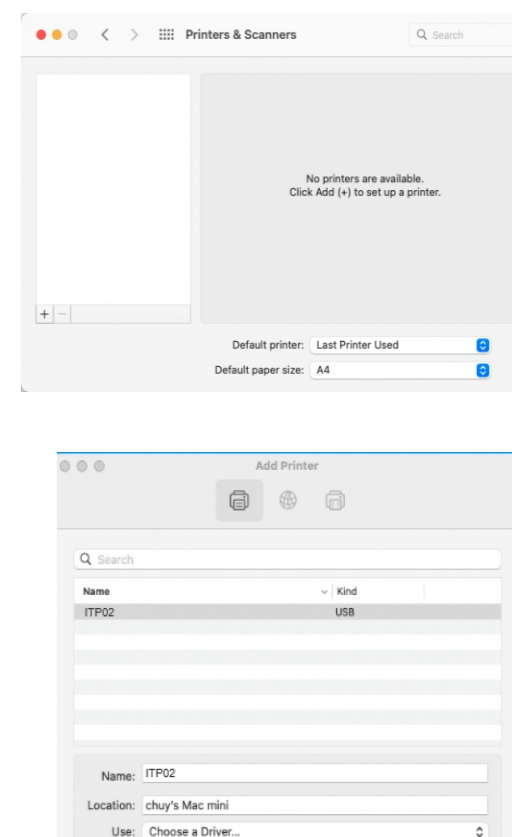
### 1.1 What's in the package?



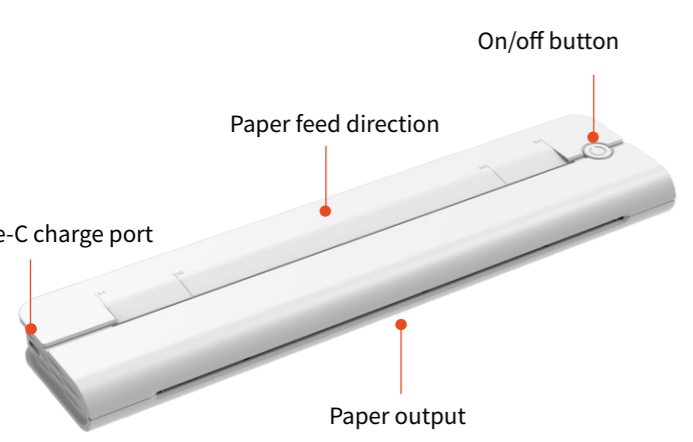
If contents are missing or damaged, please contact us.



**Note :** After installing the driver, you need to add the printer to the mac system printer and scanner service



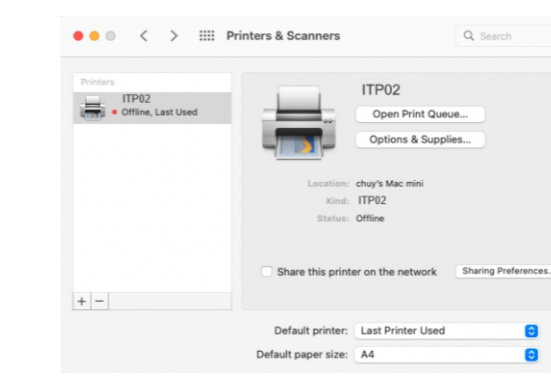
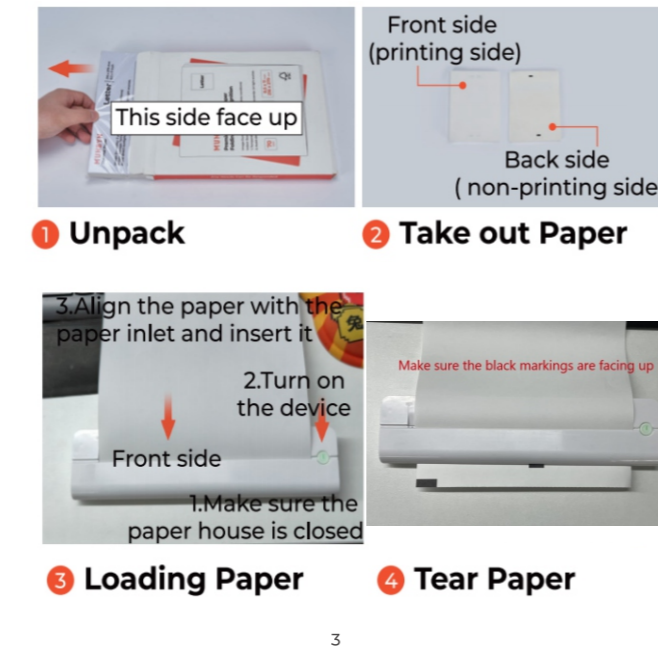
## 1.2 Product features



## 02 Set Up The Printer

**Recommend:**  
Watch the short setup video at: <https://munbyn.biz/1102-video>

### 2.1.Quick printer connection



## 03 Pro Tips

- Anytime you change you printer, run the automatic label identification.
- Press the feeder button on the printer to skip a blank label.
- To run a self-test, press and hold the feeder button until you hear two short beeps.
- To ensure your printing quality, please use MUNBYN labels. If you use other brands' label paper, please run "automatic label identification" before printing.
- Regularly clean the printer head.
- If the paper is jammed and the red light flashes, run Automatic label identification.
- Insert Munbyn into the same USB port on your computer every time. This will avoid creating duplicate copies of the printer in your operating system.

## 04 FAQ

FAQ file, please visit: <https://munbyn.biz/130B-FAQ>

## 05 LED Status

| Light                          | Description         | Troubleshoot                              |
|--------------------------------|---------------------|---|
| Green                          | Bluetooth connected |   |
| Red                            | No paper placed     |   |
| Red                            | Cover is not closed | Check that the cover is completely closed |
| Flashing Green                 | Charging            |   |
| Flashing Red (every 2 seconds) | Low battery         |   |

## 06 Feeder Button Instruction

| Printer status | Feeder button                               | Function                       |
|----------------|---|--------------------------------|
| Standby        | Press and hold on until you hear one beep   | Automatic label identification |
| Standby        | Press and hold on until you hear five beeps | Reset Printer                  |

## 2.3. Bluetooth connection for Smartphone/Tablet

The printer is suitable for bluetooth of mobile phones and tablets, not compatible with bluetooth of computers. And the printer cannot be connected directly via the Bluetooth of the device, it needs to be connected using the Munbyn Print APP.

### 2.3.1. Connect the printer through the Munbyn Print APP

1) Search "Munbyn Print" on App Store or Google Play to get the App or scan the QR code below to download



2) Scan the QR code tutorial below to set it up



3) If your mobile needs a PIN password, please enter "0000".  
**Note:** Due to the mobile phone system requirements, the app needs to access your location services information, you'll get a notification requesting permission. You need to enable GPS and confirm authorization (Android only).

## 2.4. USB connection for Laptop/PC

- Follow step (2.1 Quick printer connection) to connect the computer and printer using the USB cable.
- Download the printer driver from the following URL or insert the USB flash drive into your computer, and follow the steps (2.4.1-2.4.2) to complete the installation.

**Note:** For the latest driver, please visit: <https://munbyn.biz/130BD>

## 07 Specification

| Method                | Direct Thermal   |
|-----------------------|--|
| Resolution            | 203 dpi  |
| Max Printing Speed    | 15 mm/s  |
| Paper Width           | 208.0 mm   |
| Paper Thickness       | 0.06-0.25 mm   |
| Power Adapter         | 5V / 2 A   |
| Printing Life         | TPH 50Km   |
| Operating Environment | Temperature: 0 to 45 °C<br>Humidity: 10-90% (non condensing)   |
| Storage Environment   | Temperature: -10 to 50 °C<br>Humidity: 10-80% (non condensing) |
| Connection            | Bluetooth / USB  |
| Weight                | 1.76 lbs/0.8kg   |
| Dimensions            | 272x65x25mm(L*W*H)   |

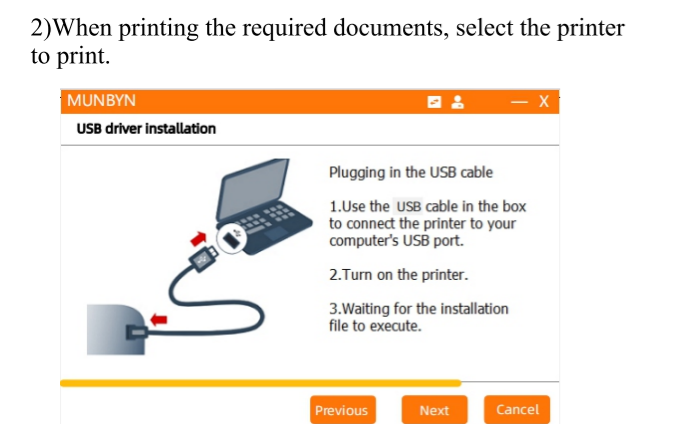
## 08 Safety Notices

- The printer head can become very hot after printing labels. Do not touch the printer head.
  - Do not bend the power cord excessively or place objects on the cord.
  - Do not use the printer if you find any irregularities as these could result in fire or electrocution.
  - Keep the printer out of reach of children.
  - Use only approved accessories and do not try to disassemble, repair the unit by yourself.
  - Keep the printer away from water and other objects that could penetrate the components.
  - Please unplug the printer when it is not in use for long periods.
- ISED RSS Warning/ISED RF Exposure Statement**  
**ISED RSS Warning:**  
This device complies with Innovation, Science and Economic Development Canada licence-exempt RSS standard(s). Operation is subject to the following two conditions: (1) this device may not cause interference, and (2) this device must accept any interference, including interference that may cause undesired operation of the device.
- Le présent appareil est conforme aux CNR d'ISED applicables aux appareils radio exempts de licence. L'exploitation est autorisée aux deux conditions suivantes:  
(1) l'appareil ne doit pas produire de brouillage, et  
(2) l'utilisateur de l'appareil doit accepter tout brouillage radioélectrique subi, même si le brouillage est susceptible d'en compromettre le fonctionnement.
- ISED RF exposure statement:**  
This equipment complies with ISED radiation exposure limits set forth for an uncontrolled environment.  
Le matériel est conforme aux limites de dose d'exposition aux rayonnements énoncés pour un environnement non contrôlé.

## 2.4.1 Windows Driver Installation

Downloaded software from the web address or insert the USB flash drive into your computer, open the driver installation package, click on the .exe file for Windows computers, and follow the steps below to install

1) Run the "ITP02-Windows-Driver-Installer.exe" installer. Then follow the installation prompts until you see the message "Driver installation is complete".



## 09 FCC Statement

This device complies with part 15 of the FCC Rules. Operation is subject to the following two conditions:  
(1) This device may not cause harmful interference, and  
(2) This device must accept any interference received, including interference that may cause undesired operation.

Changes or modifications not expressly approved by the party responsible for compliance could void the user's authority to operate the equipment.

This equipment has been tested and found to comply with the limits for a Class B digital device, pursuant to Part 15 of the FCC Rules. These limits are designed to provide reasonable protection against harmful interference to radio and television reception, which can be determined by turning the equipment off and on. The user is encouraged to try to correct the interference by one or more of the following measures:

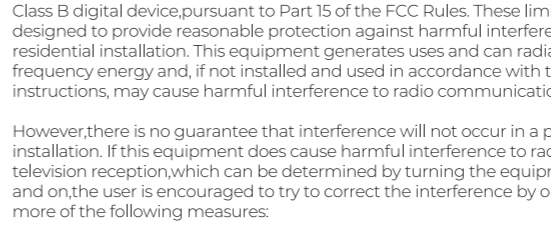
- Reorient or relocate the receiving antenna.
- Increase the separation between the equipment and receiver.
- Connect the equipment into an outlet on a circuit different from that to which the receiver is connected.
- Consult the dealer or an experienced radio/TV technician for help.

**FCC Radiation Exposure Statement:**  
This equipment complies with FCC radiation exposure limits set forth for an uncontrolled environment.

## 10 Tech Support

**E-mail:** support@munbyn.com  
**Whatsapp:** +86 1335 295 0490  
**Phone:** +1 650 206 2250  
**Skype:** munbyn  
**Support Time:** Monday to Friday 24 hours.

**Support Time:** Monday to Friday 24 hours.  
MUNBYN provides 24-months' warranty and lifetime free service. If you encounter any issues with the product, please contact the MUNBYN team to promptly receive troubleshooting tips or a replacement.



You can access the link below or scan the QR code to download user manuals in other languages.

**Other Languages:** [munbyn.biz/130Bminorlang](https://munbyn.biz/130Bminorlang)  
Deutsches Benutzerhandbuch  
Manual de usuario en español  
Manuel d'utilisation en français  
日本語のユーザーマニュアル

## 10 Tech Support

**E-mail:** support@munbyn.com  
**Whatsapp:** +86 1335 295 0490  
**Phone:** +1 650 206 2250  
**Skype:** munbyn  
**Support Time:** Monday to Friday 24 hours.

**Support Time:** Monday to Friday 24 hours.  
MUNBYN provides 24-months' warranty and lifetime free service. If you encounter any issues with the product, please contact the MUNBYN team to promptly receive troubleshooting tips or a replacement.



You can access the link below or scan the QR code to download user manuals in other languages.

**Other Languages:** [munbyn.biz/130Bminorlang](https://munbyn.biz/130Bminorlang)  
Deutsches Benutzerhandbuch  
Manual de usuario en español  
Manuel d'utilisation en français  
日本語のユーザーマニュアル