

# WLC-03说明书

## 双面157g铜版纸

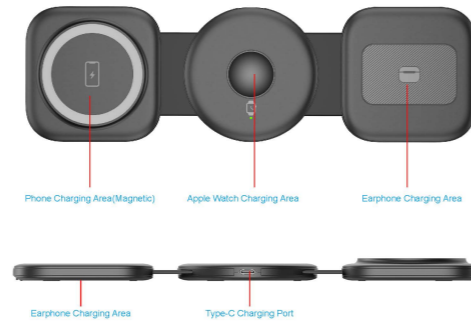
### 尺寸：80\*80mm

## 3-in-1 Foldable wireless charger User Manual



### Product Introduction

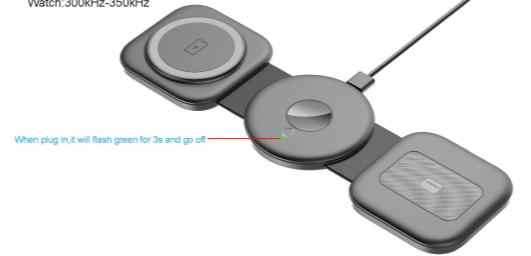
The product is a 3-in-1 wireless charging pad, preferred smart chip, and supports mobile phones, smart watches, earphones. Achieve high efficiency, stable performance, put it on and charge, easily enjoy wireless charging technology life. It can also wirelessly charge mobile phones or other electronic devices that support Qi standard.



### Specification

Input: 27W Type-C  
 Output: 5W/7.5W/10W/15W (Smart Phone)  
 Output: 5W (Earphone)  
 Output: 2.5W (Smart Watch)  
 Charging Interface: Type-C Input  
 Phone: 115kHz-205kHz  
 Earphone: 115kHz-205kHz  
 Watch: 300kHz-350kHz

Transmission Distance: 3-8mm  
 Conversion Efficiency: 80-85%  
 Material: ABS+PC  
 Size: 249\*75\*11.8 mm  
 Weight: 123.2 g



### Safety Notice

1. Make sure your device supports wireless charging before using. It is recommended to use the original charging cable and adapter. Please remove the cellphone/earbuds case before charging.
2. Please use a qualified QC 3.0 adapter with 3.0 USB-C female to USB-A male adapter or Apple 27W USB-C power adapter, otherwise it may cause unstable charging.
3. Do not put metal objects or magnetic cards on the charging board, which may cause damage or abnormality of the charger.
4. For a fast charging result, please try "Open Settings > Battery Health > Turn off battery optimization."
5. If the receiving coil or the transmitting board is overheated during use and stops charging, please remove the charging product and try charging again after cooling down.
6. Do not use or place the product at high temperature or expose it directly to the sun. Do not immerse the product in water or near ignition sources.
7. AirPods 2nd has two different versions of charging cases. A1938 supports wireless and wired charging. A1602 wired charging only.
8. Due to the big lens size, please make sure the iPhone 14 Pro is in a horizontal charging mode when you use the wireless charger.

### FAQ and Solution

1. Is the phone not charging?  
The phone is not aligned with the sensing area or the receiving coil is not installed correctly.
2. Heats up while charging?  
It is normal for the receiving coil or the transmitting board to heat up during the wireless charging process.
3. Phone charging intermittently?  
A. If the charging current of the adapter is not enough or the voltage is unstable, please use the Apple 27W USB-C power adapter to charge.  
B. The charging position is too biased, and the electromagnetic induction is not good. The charging position can be adjusted.
4. The main unit indicator light is normal, but the mobile phone does not work?  
The receiving coil of the mobile phone is faulty, it is recommended to update the receiving coil or repair the mobile phone (built-in receiving coil).

### Precautions

1. Do not pull the power cord forcibly to prevent the power cord from breaking or falling off.
2. Do not disassemble the product or in fire, water, and avoid causing a short circuit.
3. Do not place the product in extremely hot, humid or corrosive environments, to avoid damage to the product.
4. Do not give children to play, in order to avoid unnecessary accidents.

### Warranty

1. If used for fast charging, Please use a qualified QC 3.0 adapter with 3.0 USB-C female to USB-A male adapter or Apple 27W USB-C power adapter.
2. Do not place metal debris or magnetic stripe card to the charging panel, the charger may be damaged.
3. If the over heating after stop charging, remove the charging device to be cooled, and then try to re-charge.



### FCC WARNING

This device complies with part 15 of the FCC Rules. Operation is subject to the following two conditions: (1) this device may not cause harmful interference, and (2) this device must accept any interference received, including interference that may cause undesired operation. Any changes or modifications not expressly approved by the party responsible for compliance could void the user's authority to operate the equipment.

NOTE: This equipment has been tested and found to comply with the limits for a Class B digital device, pursuant to Part 15 of the FCC Rules. These limits are designed to provide reasonable protection against harmful interference in a residential installation. This equipment generates, uses and can radiate radio frequency energy and, if not installed and used in accordance with the instructions, may cause harmful interference to radio communications. However, there is no guarantee that interference will not occur in a particular installation. If this equipment does cause harmful interference to radio or television reception, which can be determined by turning the equipment off and on, the user is encouraged to try to correct the interference by one or more of the following measures: -- Reorient or relocate the receiving antenna. -- Increase the separation between the equipment and receiver. -- Connect the equipment into an outlet on a circuit different from that to which the receiver is connected. -- Consult the dealer or an experienced radio/TV technician for help. To maintain compliance with FCC's RF Exposure guidelines, This equipment should be installed and operated with minimum distance between 20cm the radiator your body. Use only the supplied antenna.

CE FC RoHS  
 Made in China