

Operating instruction

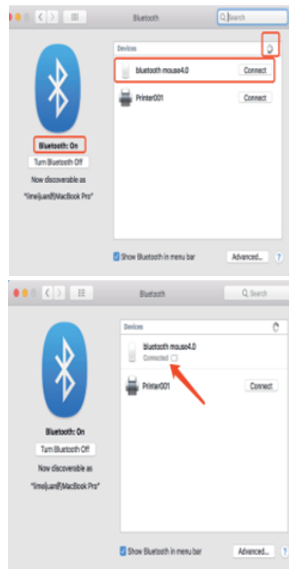
Packaging list: instruction x1, rechargeable Bluetooth mouse x1, USB cable x1, packaging carton x1.

How to use Bluetooth wireless mouse:

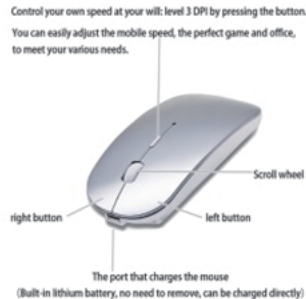
Apple/Mac/MacBook/pro/Air2012/2013/2014/2015/2016/2017/2018/2019: first, open the mouse switch, open the computer system preferences, open the bluetooth, when the computer Bluetooth display is searching for nearby Bluetooth devices, hold down the mouse button (at the bottom of the mouse small black button) and keep 3 to 8 seconds, and then your computer display the search bluetooth mouse, bluetooth device click on the link, and then the connection is successful



1



2



Win7/8/10/XP series notebook computer use instructions: First, open the mouse switch, open the computer settings, open the device Bluetooth function, open add Bluetooth, open Bluetooth, when the computer Bluetooth display is searching for nearby Bluetooth devices, hold down the mouse button (at the bottom of the mouse small black button) and keep 3 to 8 seconds, and then your computer display the search bluetooth mouse, bluetooth device click on the link, and then the connection is successful

⚠ : ((if your computer can't find the bluetooth mouse device, please shut down and restart the computer, the mouse, and according to the steps to connect again).)

1.

3

How to Charge Bluetooth Mouse?

This is a rechargeable mouse. It doesn't require you to buy any other batteries. It already has a built-in lithium battery. It can be charged like a mobile phone. There is a USB charging line in the box.

BUILT-IN BATTERY: Built-in battery, easy to charge by micro usb cable, no more need for extra AAA battery. please please keep the mouse power switch in "ON" position when charging.

When the pointer of your mouse does not move or cannot be used, or suddenly disconnects continuously in use, you need to charge it for about 3 hours. Please use the USB port of your computer to charge it, or use an adapter with an output of no more than 5v to charge it

AUTO ENERGY-SAVING SLEEPING MODE: Li-polymer batteries, high cycle life. the Auto Switch Off function will help you save energy as your Bluetooth mouse will switch off when your PC is turned off or the receiver is disconnected. If you do not use the mouse for eight minutes, it will go to sleeping mode, you can press the any button to wake it up.

4



Use the button DPI on the mouse: You are free to adjust the mouse sensitivity to match your activity. 3 DPI levels available (800-1200-1600). The higher CPI, the faster the cursor on your screen will move.

We have successfully tested each mouse, so please feel free to use it. If you have any problems that you do not understand, please contact us in a timely manner, and we will help you solve the problem, klgdtrade@outlook.com

5

FCC Warning

This device complies with part 15 of the FCC Rules. Operation is subject to the following two conditions:(1) This device may not cause harmful interference, and (2) this device must accept any interference received, including interference that may cause undesired operation.

Any Changes or modifications not expressly approved by the party responsible for compliance could void the user's authority to operate the equipment.

This equipment has been tested and found to comply with the limits for a Class B digital device, pursuant to part 15 of the FCC Rules. These limits are designed to provide reasonable protection against harmful interference in a residential installation. This equipment generates uses and can radiate radio frequency energy and, if not installed and used in accordance with the instructions, may cause harmful interference to radio communications. However, there is no guarantee that interference will not occur in a particular installation. If this equipment does cause harmful interference to radio or television reception, which can be determined by turning the equipment off and on, the user is encouraged to try to correct the interference by one or more of the following measures:

- Reorient or relocate the receiving antenna.
- Increase the separation between the equipment and receiver.
- Connect the equipment into an outlet on a circuit different from that to which the receiver is connected.
- Consult the dealer or an experienced radio/TV technician for help.

The device has been evaluated to meet general RF exposure requirement. The device can be used in portable exposure condition without restriction.