

**User Manual**  
**Car DVR**  
**M/N:C1**

# CONTENT

<b>1. DISCLAIMER AND SAFETY GUIDELINES</b>	<b>1</b>
1.1 Disclaimer	1
1.2 Safety Guidelines	2
<b>2. ACCESSORIES AND INTERFACES</b>	<b>3</b>
2.1 In the box	3
2.2 Product Diagram	4
2.3 Installation Guideline	5
2.4 Interfaces Introduction	7
<b>3. FUNCTIONS AND SETTINGS</b>	<b>8</b>
3.1 General Settings	8
3.2 CarPlay / Android Auto and their settings	10
3.3 Recorder and its settings	11
3.4 FM and its settings	12
3.5 Playback and its settings	13
<b>4. APPENDIX</b>	<b>14</b>
4.1 Specifications	14
4.2 Warranty	14



To protect our earth, please use the e-version of this manual. If you encounter any problems while reading this manual or using the product, please feel free to contact us: [support@spedaltech.com](mailto:support@spedaltech.com)

# 1. DISCLAIMER AND SAFETY GUIDELINES

## 1.1 Disclaimer

This product is a multifunctional dashcam. By using the built-in CarPlay and Android Auto functions, you will be able to connect your mobile phones with this device and manipulate your mobile phone Apps on this device . Please pay special attention to the cautions and warnings in this User Manual. You can visit our homepage <http://www.spedal.cc> to get relevant files of this product, including User Manual and other files. Shenzhen Xinzhuang Gude Technology Co. Ltd. (Spedal) reserves the right to update this User Manual.

The information in this document affects your safety, legal rights and responsibilities. Read this entire document carefully to ensure proper configuration before use. Failure to follow the instructions and warnings in this document may result in product damage or other possible injury or loss. You must strictly follow Spedal's guidelines to install and use the product, and never use non-standard parts. Before assembling, setting up and using, be sure to carefully read all the instructions and warnings in this document. This product is not a toy. Please do not allow children to touch this product or its parts and wires. Please be careful when operating in scenes where children are present.

By using this product, you hereby signify that you have read this disclaimer carefully and that you understand and agree to abide by the terms and conditions herein. The user promises to be responsible for his actions and all consequences arising therefrom. The user promises to use this product only for legitimate purposes, and agrees to all the terms and contents of this document and any related policies or guidelines that Spedal may formulate. You understand and agree that in the absence of videos or photos, Spedal may not be able to analyze the cause of your product damage or accident, and cannot provide you with after-sales service such as warranty.

**Spedal is not responsible for all losses caused by the user's failure to use the product in accordance with this User Manual.**

---

In compliance with laws and regulations, Spedal reserves the right of final interpretation of this document and all related documents of this product. If the manual is updated, revised or terminated, we will not notify you personally. Please visit the official website of Spedal for the latest product information. Spedal is a trademark of Shenzhen Xinzhuang Goodo Technology Co. Ltd. and its affiliates. The product names, brands, etc. appearing in this article are all trademarks or registered trademarks of their respective companies.

## 1.2 Safety Guidelines

### Warnings

- Please use the original cable and power cords only;
- Do not exceed the rated voltage when using the device;
- Do not install or operate the device with wet hands;
- Do not install the device in places of high temperature, humidity;
- Do not install the device in places of flammable or explosive gases or liquids;
- Do not install the device in an area interfering with the driver's sight or driving safety;
- Do not install the device on the airbag cover or within the airbag's working range;
- Do not leave the device in a closed vehicle under high temperature for a long time;
- Do not poke the device and its accessories using sharp objects such as awl or scissor;
- Do not disassemble, repair or modify the device and its accessories by yourself;
- Do not install, use or place the device within the reach of any children under 16;
- Do not cut the charging cable.



**Notice: Damage caused to the dashcam as result of not obeying the warnings above is not covered by the warranty!**

### Cautions

- Do not press the lens forcefully to avoid lens breakage or lens misalignment;
- Do not directly touch the lens surface to avoid stains that affect the recording effect;
- Do not remove the memory card to avoid file damage during the shutdown process;
- When using the memory card for the first time, please format it on the device to ensure stable reading and writing;
- When not using the device for a long time, please pull out the memory card to ensure the memory card's performance.

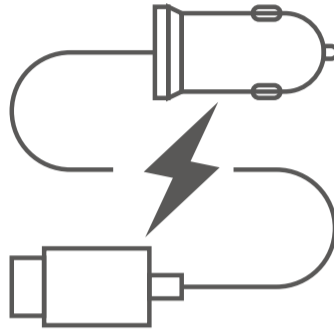
## 2. ACCESSORIES AND INTERFACES

### 2.1 In the box

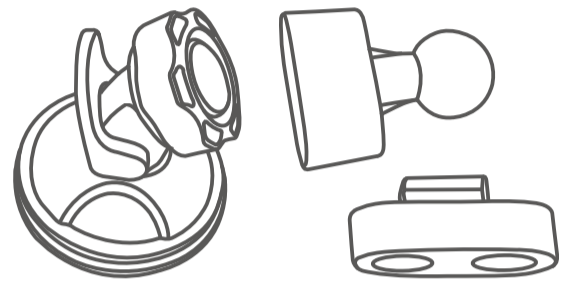
Before using this product, please check whether the product package contains all of the following items. If anything is missing, please contact Spedal or your local agent.



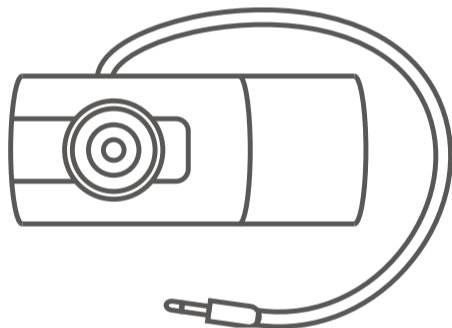
Multifunctional Dashcam



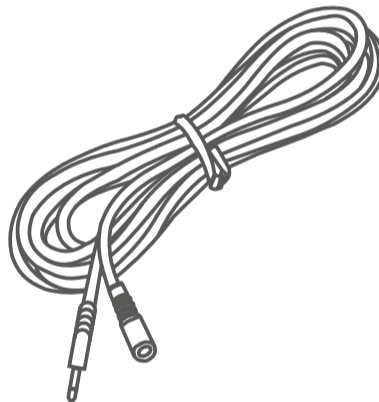
In-Car Charger



Magnetic Suction Bracket



Back Camera



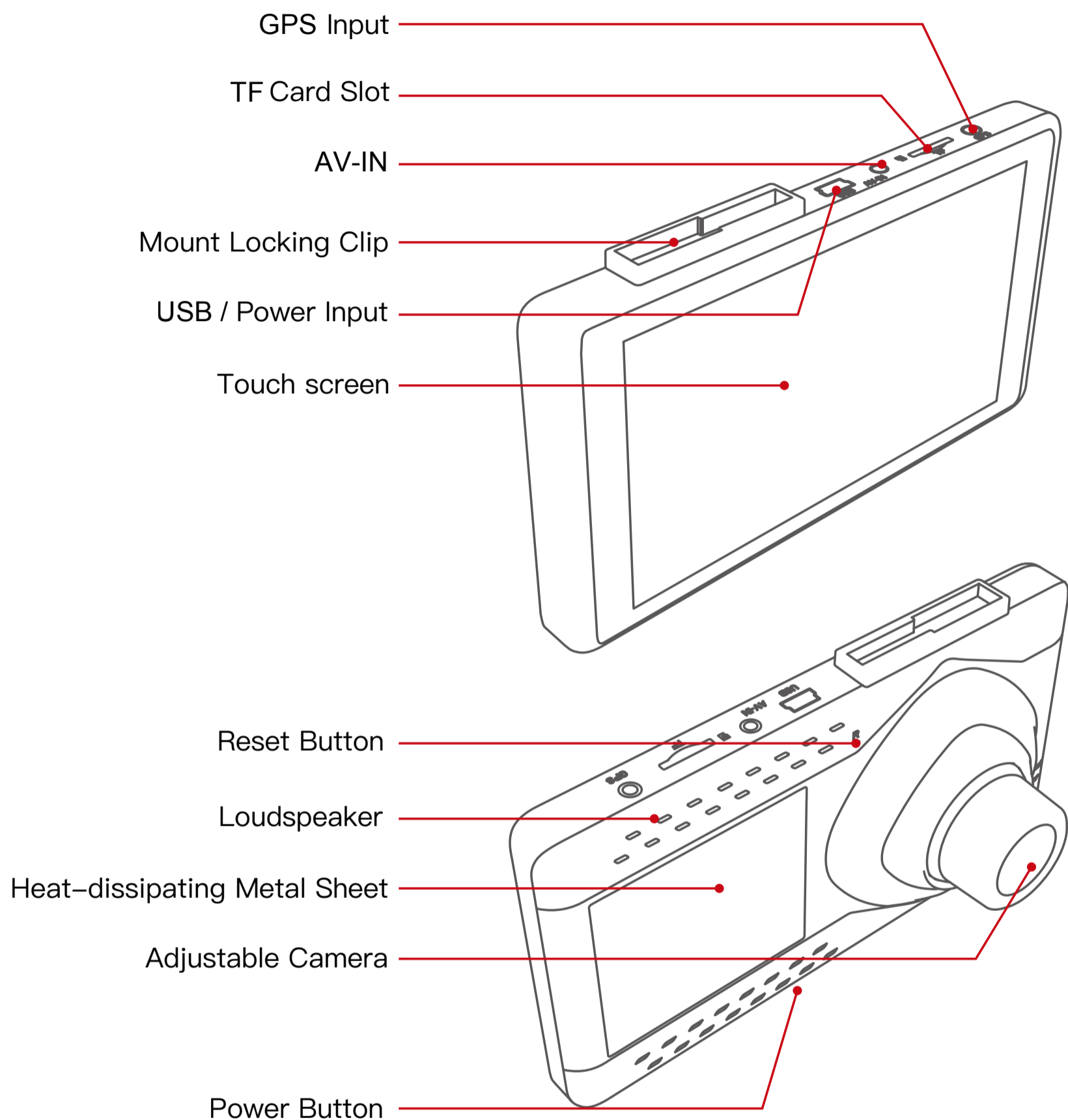
Extension Cable



32GB TF Card (Gift)

**Notice: Please use the SPEDAL original cable and accessories only. Gifts and accessories are not covered by the warranty. The content of this product package is subject to change without notice, the actual package content shall prevail.**

## 2.2 Product Diagram



**Note: When the function CarPlay or Android Auto is activated, two chips of this device will work at the same time. The surface temperature of the heat-dissipating metal sheet can reach as high as 60°C, which is within normal range of its working temperature. Please do not touch the sheet surface for a long while to prevent being scalded.**

## 2.3 Installation Guideline

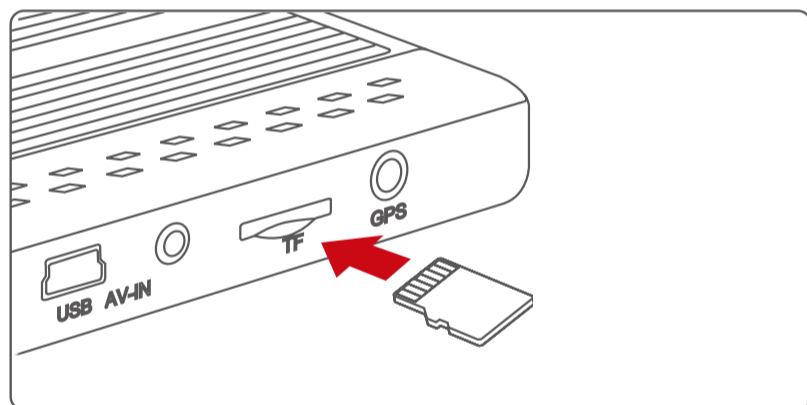
The device is in the storage state when it leaves the factory. Please follow the steps below to prepare for installation:

1. Take the device and its accessories out of the box or plastic bag;
2. Tear off the protective film on the screen and lens of the device;
3. Remove the wire tie that binds the wire.

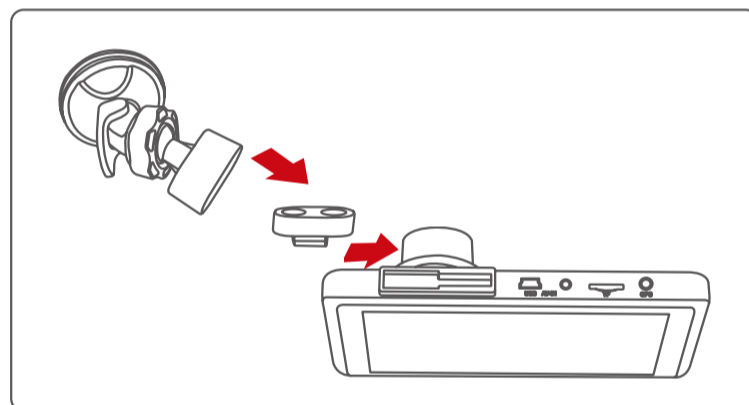
### TF Card Installation

Insert the TF card into the slot with the pins facing upwards. Push the TF card forward, and the card can be removed after it pops out. Please use the 32GB TF card that comes with the product. A third-party TF card should meet these requirements: **Class 8 or above, maximal 128GB.**

**Note: Installing and removing the TF card in the recording mode may result in failure of recording videos and causing damage to the TF card. Please turn off the device before inserting or removing the TF card.**



**TF Card Installation**



**Magnetic Suction Bracket Installation**

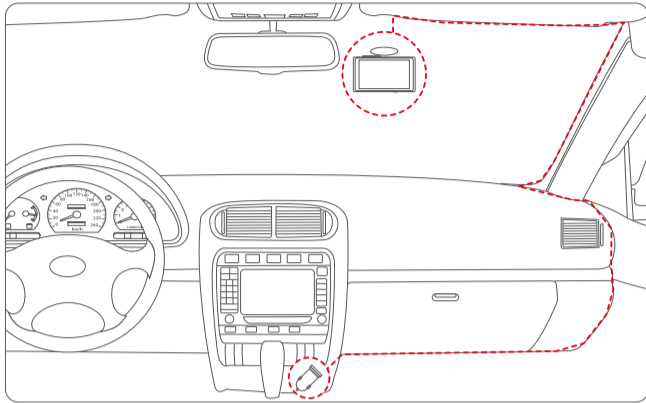
### Magnetic Suction Bracket Installation

1. Aim the magnetic transfer slide buckle at the mount buckle on the device.
2. Hold the device and chuck bracket with your hands, and aim the mount at the chuck bracket on the device.
3. Select a proper position (such as the center of the rearview mirror), attach the suction mound to the windshield and rotate the mount clockwise to lock.
4. Adjust the recording angle (it is the best angle that the car front shows in the middle of the display).

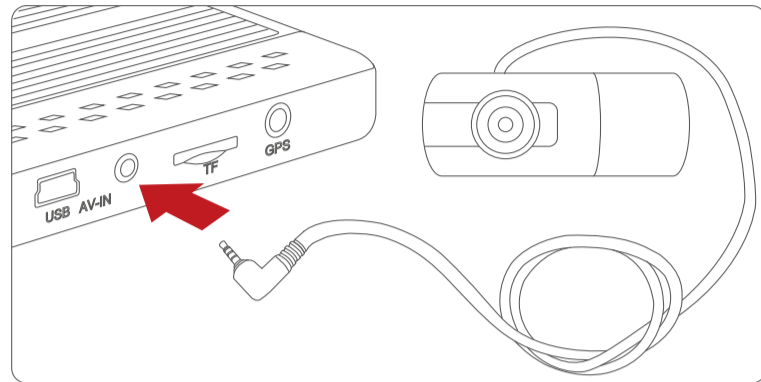
**Note: The first and second steps have been completed when the product leaves the factory. You only need to perform the third and fourth steps. You can pull down the device directly from the suction bracket now and reinstall the device back to its position by bringing the device near to the magnetic slider.**

## Dashcam Installation

1. Insert the cigarette lighter plug of the Charger into the car cigarette lighter socket;
2. Insert the Mini-USB plug of the Charger into the DC-5V slot of the device;
3. Fix the device on the front windshield by using the suction bracket.



**Dashcam Installation**



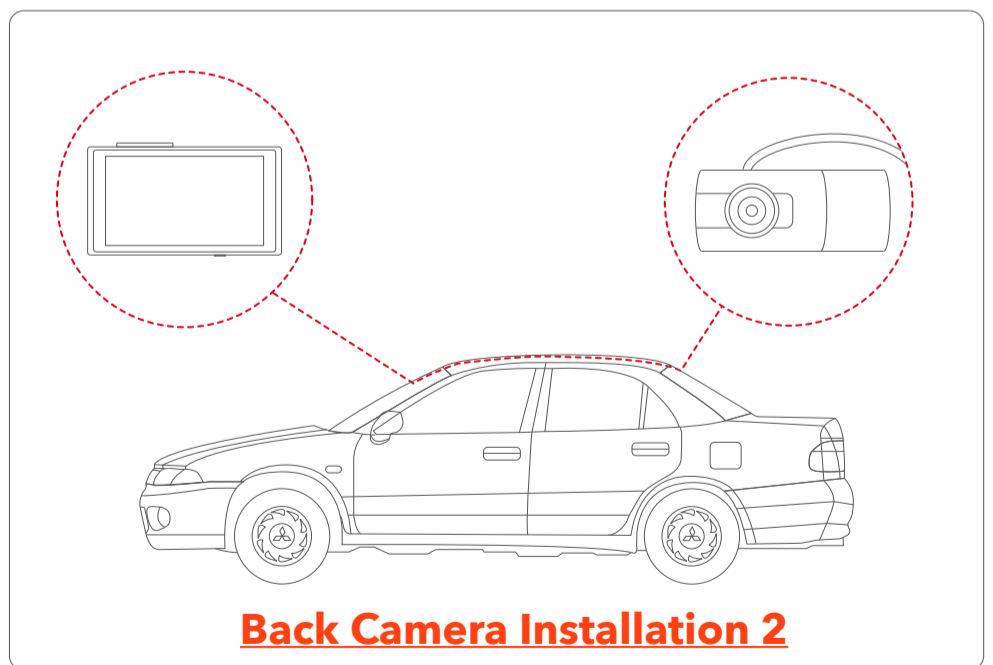
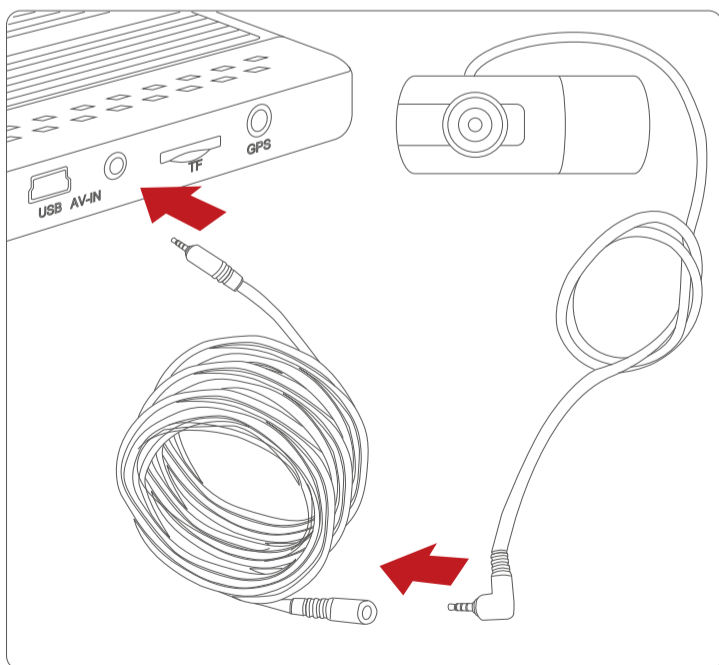
**Back Camera Installation 1**

## Back Camera Installation 1

1. Insert the 2.5mm plug of the back camera into the AV-IN hole of the dashcam;
2. Tear off the protection film from the sticker on the back camera;
3. Stick the back camera on dashboard and adjust the angle to record the cockpit scene.

## Back Camera Installation 2

1. Insert the 2.5mm plug of the back camera into the connection port of the extension cable;
2. Insert the 2.5mm plug of the extension cable into the AV-IN hole of the dashcam;
3. Tear off the protection film from the sticker on the back camera;
4. Stick the back camera on parcel shelf and adjust the angle to record the cockpit or the scene behind.



**Back Camera Installation 2**

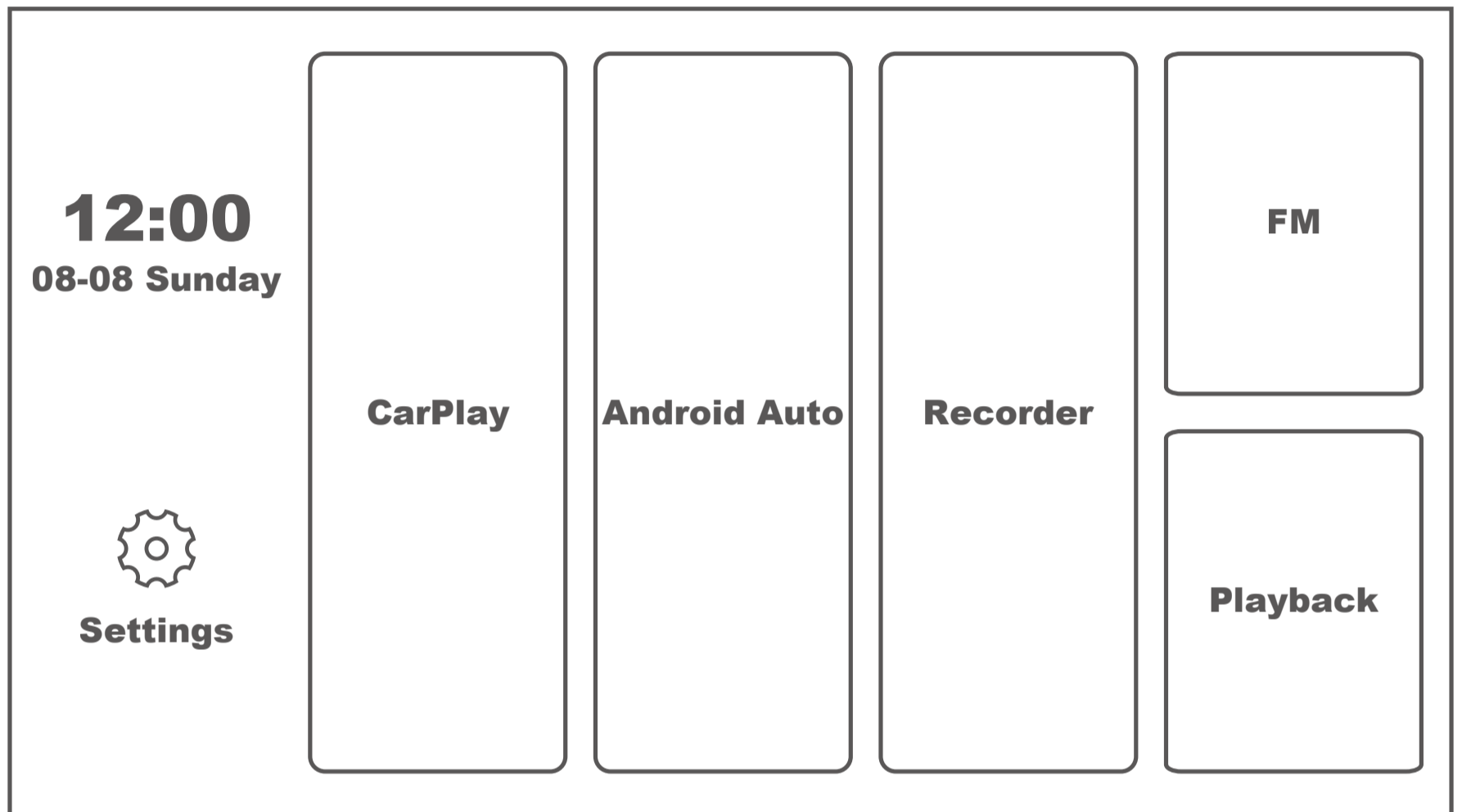
**Note:** The extension cable is only needed when you install the back camera on on the parcel shelf, or when you install it elsewhere where the original cable of the back camera is not long enough.



## 2.4 Interfaces Introduction

### Main Interface

When you connect the device to the vehicle via the in-vehicle charging cable, the device powers on after the vehicle starts. If you want to connect the device to the power in any other way, press and hold the power button to turn it on. The screen after turning on the device is as follows.



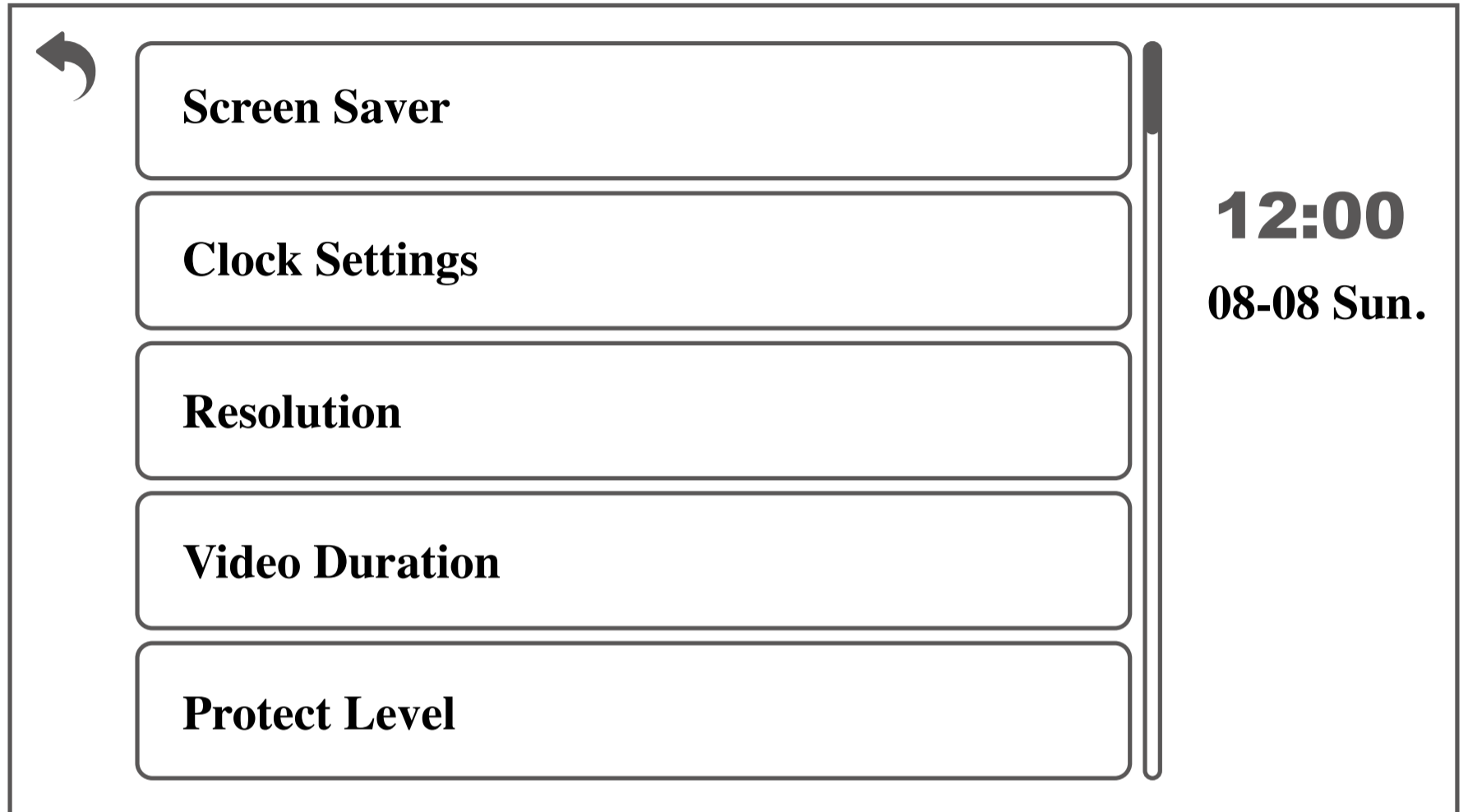
No.	Area	Function
①	Settings	General settings of the device.
②	CarPlay	Connecting your iPhone with this device
③	Android Auto	Connecting your Android mobile phone with this device
④	Recorder	Photo and video shooting during drive process.
⑤	FM	Mobile phone FM connection to the car loudspeaker.
⑥	Playback	View the photos and the videos.

**Note:** For more detailed introduction of the device functions and settings, please refer to 3. FUNCTIONS AND SETTINGS.

## 3. FUNCTIONS AND SETTINGS

### 3.1 General Settings

Click "Settings" on the main interface to enter "General Settings".



Click  to return to the main interface. Scroll to see all subcategories.

No.	Subcategory	Option	Introduction
1	Screen Saver	Off / 1 min. / 3 min.	Default is Off. Choose time length to start the screen saver program during drive recording.
2	Clock Settings	/	Date and time settings.
3	Resolution	1080P / 720P	Default is 1080P.
4	Video Duration	1min. / 2 min. / 3 min.	Default is 1 minute. Video duration when drive recording.
5	Protect Level	Off / High / Low	Default is Off. Sensitivity of the Gravity sensor (G-Sensor). Emergency videos activated by collision will be locked and can not be overwritten.
6	Park Monitoring	Off / High / Low	Default is Off. Auto video recording for 1 minute when car is parked and sensed collision. Emergency videos activated by collision will be locked and can not be overwritten.

No.	Subcategory	Option	Introduction
7	Keyboard clicks	Off / On	Default is On. Feedback sound of clicking.
8	Volume	0-10	Default is 5. Volume of the device.
9	Language	English, Deutsch, Français, Italiano, Español, 简体中文, 繁體中文, 日本語	System language.
10	Firmware Version	/	View the firmware version.
11	Flicker	50Hz / 60Hz	Default is 50Hz.
12	Reset settings	Yes / No	Reset all settings back to factory settings, without deleting data from TF card.
13	Format TF-Card	Yes / No	Format the TF card and delete all data.

## 3.2 CarPlay / Android Auto and their settings

CarPlay or Android Auto will allow you to connect your mobile phone to the dashcam wirelessly and to manipulate your mobile phone Apps from the dashcam.

Please make sure in advance that your iPhone is above iOS 9 or your Android cellphone is above Android 11.

Click "CarPlay" or "Android Auto" on the main interface to enter the CarPlay or Android Auto interface and follow the following instructions to connect your mobile phone to the dashcam.



1. Turn on WiFi and Bluetooth option on your mobile phone;
2. Find this device "**CAR-KIT-XXXX**" in Bluetooth and connect to it;
3. Confirm to pair this device with your mobile phone through Bluetooth;
4. Wait 1-3 minutes before entering CarPlay or Android Auto interface.

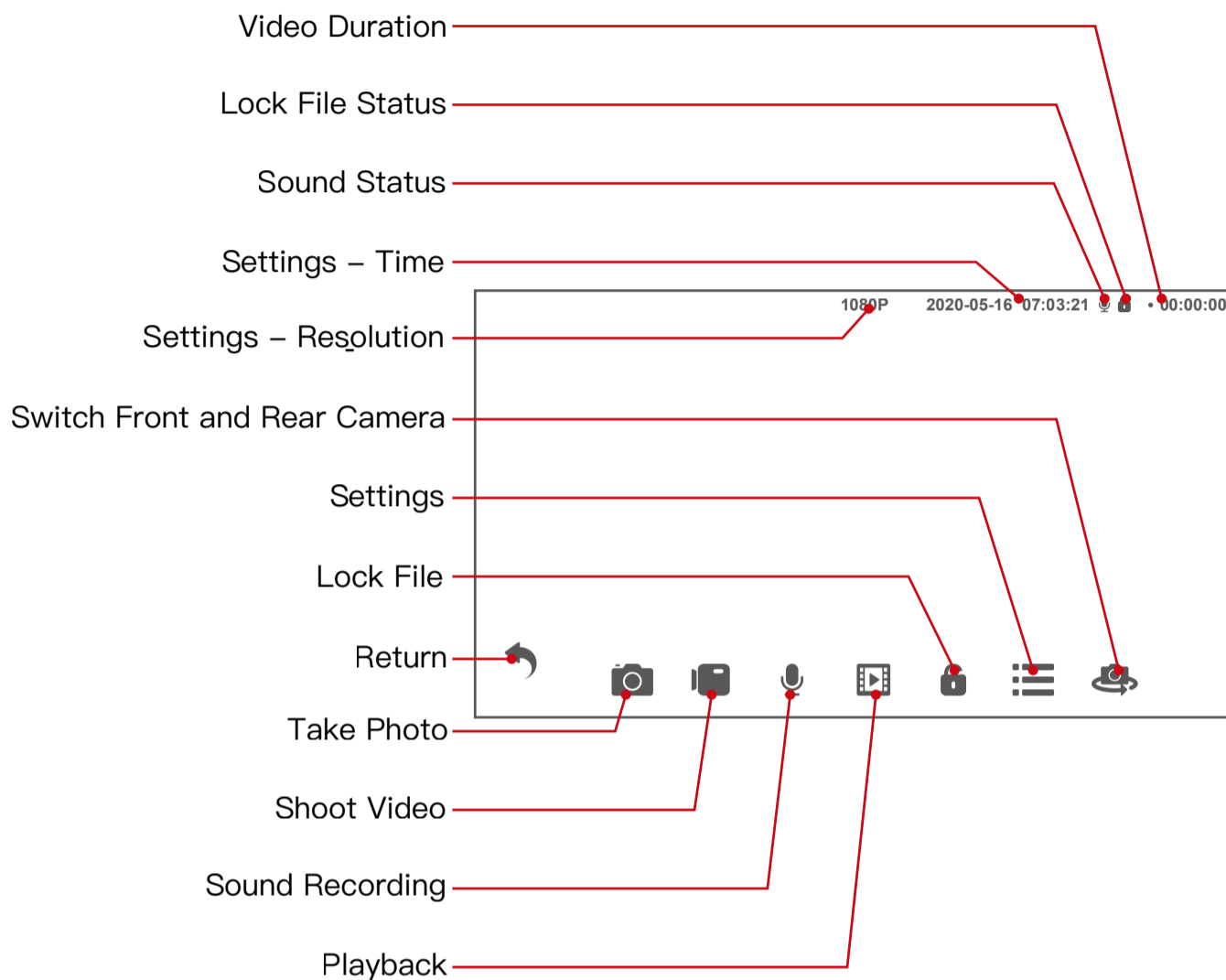


If you want to disconnect your mobile phone and the device, please turn off WiFi and Bluetooth on your mobile phone.

📞 Contact [support@spedaltech.com](mailto:support@spedaltech.com) for consultation

## 3.3 Recorder and its settings

Click "Recorder" on the main interface to enter the dashcam interface.



### Note:

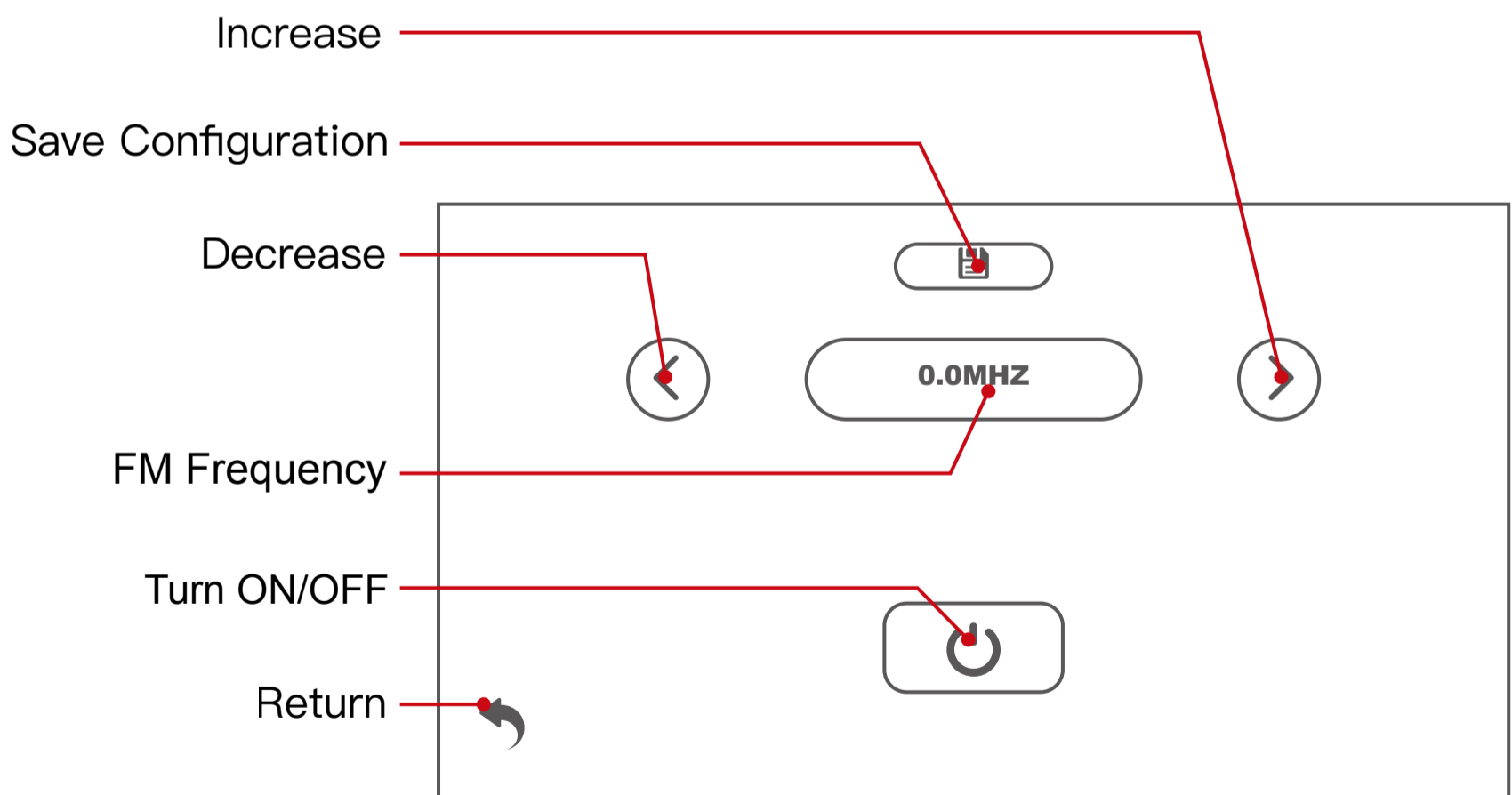
1. You can change resolution and time in Settings.
2. The audio recording status has two status: ON/OFF. You can switch the status by clicking on the "Audio recording" icon at the bottom of the screen.
3. The lock file status has two status: Locked/Unlocked. You can switch the status by clicking on the "Lock File" icon at the bottom of the screen.
4. The video length sign will appear only when a video is being recorded. You can change the video duration in settings.
5. The function "Switch Front and Rear Camera" can only be used when a back camera is connected to the device.

### 3.4 FM and its settings

Before using this function, please ensure at first that your mobile phone has been connected to the dashcam through CarPlay or Android Auto(refer to 3.2 CarPlay / Android Auto and its settings) and screen and sound synchronization have begun properly.

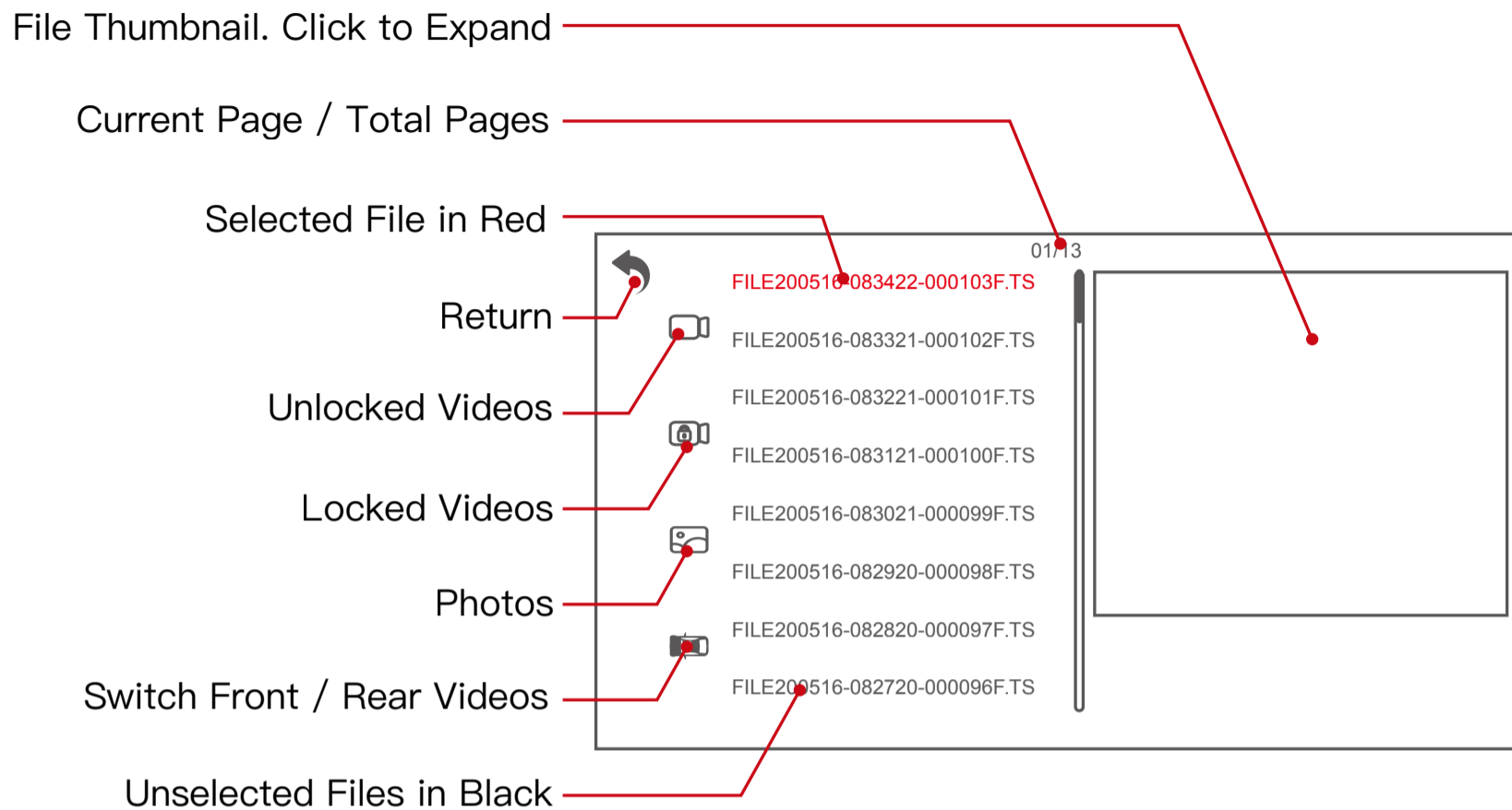
FM transmitter technology allows you to launch specific FM frequency (please make sure that this frequency is not occupied by any radio or broadcast) from the dashcam. Once you adjust the FM frequency on your car to the same level. The car's loudspeaker will synchronize the sound from the dashcam which originate from your mobile phone. In other word, the users can play music or use navigation sound or any audio files on their mobile phones and the sound will come out from their car's loudspeakers through the FM transmitter technology.

Click "FM" on the main interface to enter the FM interface. Adjust the FM frequency of your car to an available frequency that is not occupied by any radio or broadcast, for example to 91.0MHz if it is available. Then adjust the FM frequency of your dashcam to the same level of 91.0MHz to connect.

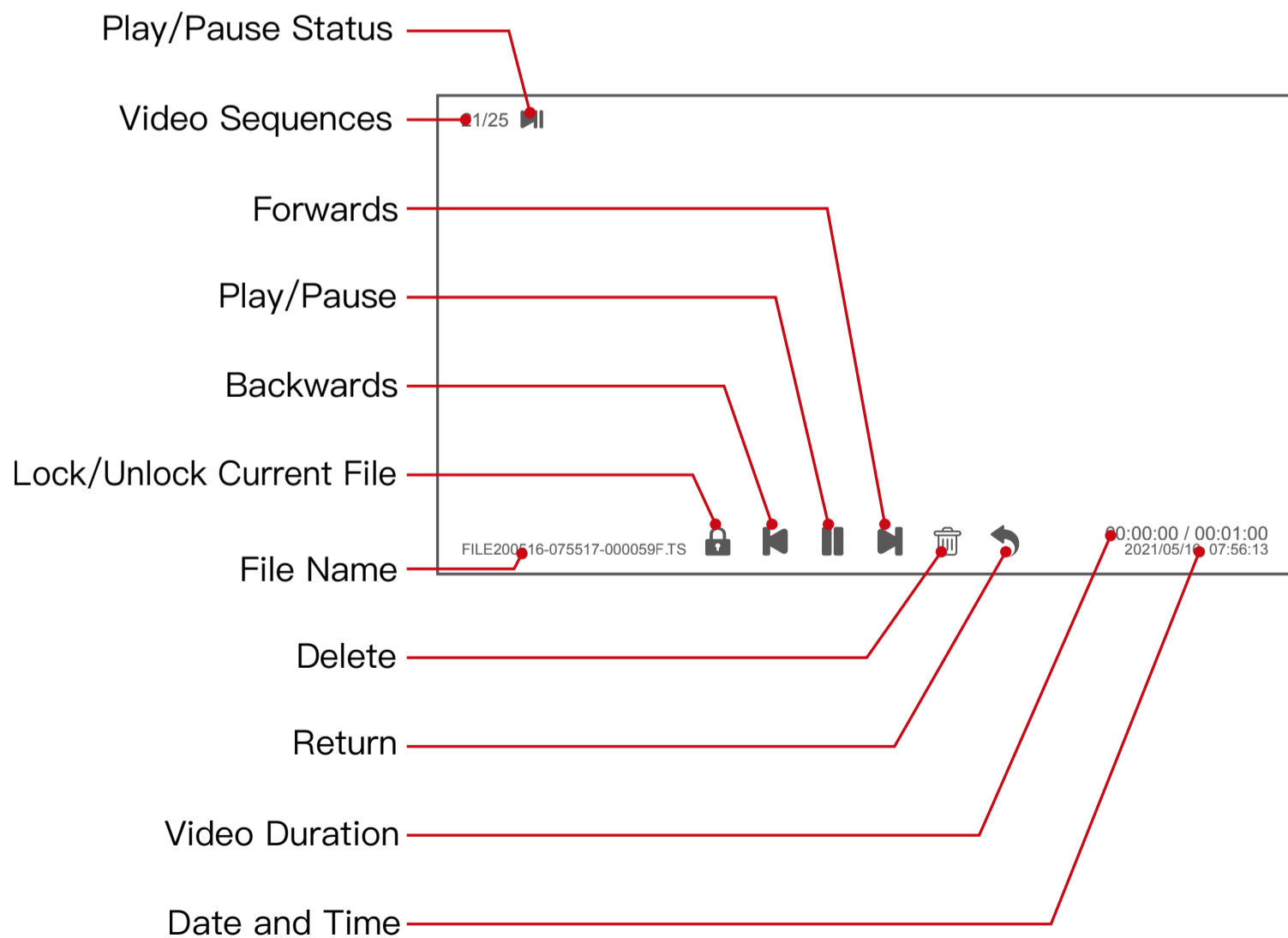


## 3.5 Playback and its settings

### Playback Interface



### Expanded File



## 4. APPENDIX

### 4.1 Specifications

Screen	5.0" Full View IPS LCD Screen
Aperture	F#1.8
Resolution	1080P
Field of View	120°
USB	Mini USB 2.0
Video Format	TS
Photo Format	JPEG
Storage Device	TF Card (Max. support 128GB)
Operating temperature	-20°C ~65°C
Storage temperature	-30°C ~75°C

### 4.2 Warranty

Thank you for purchasing the Spedal multifunctional dashcam. This unique product owns the CarPlay and Android Auto functions to bring extraordinary experience to your journey.

Customers enjoy a one-year warranty and after-sales service from the date of purchase. During this period, our company will actively respond to customers' questions or problems and provide maintenance services for product failures under normal use. Delivery fee of the product sent to and back from the factory for repair or replacement shall be paid by the product owner or the person asking for repair.

The company reserves the right to reject maintenance requirements caused by the following conditions, including but not limited to:

1. Failure to follow instructions and improper use causing device failure or damage;
2. Failure due to unauthorized disassembly, modification or maintenance of equipment;
3. Accidental damages caused by any natural disasters or other force majeure factors;
4. Warranty period of the device has expired;
5. Purchases from unreliable sources such as second-hand products.

Please strictly follow the instructions in this manual to use this product to avoid unnecessary losses. If you have any questions or problems while reading the product manual or using the product, please contact us by email: [support@spedaltech.com](mailto:support@spedaltech.com) or visit our official website.



[www.spedal.cc](http://www.spedal.cc)



## **FCC Statement**

This device complies with part 15 of the FCC rules. Operation is subject to the following two conditions: (1) this device may not cause harmful interference, and (2) this device must accept any interference received, including interference that may cause undesired operation.

Caution: Changes or modifications not expressly approved by the party responsible for Compliance could void the user's authority to operate the equipment.

NOTE: This equipment has been tested and found to comply with the limits for a Class B digital device, pursuant to part 15 of the FCC Rules. These limits are designed to provide reasonable protection against harmful interference in a residential installation. This equipment generates uses and can radiate radio frequency energy and, if not installed and used in accordance with the instructions, may cause harmful interference to radio communications. However, there is no guarantee that interference will not occur in a particular installation. If this equipment does cause harmful interference to radio or television reception, which can be determined by turning the equipment off and on, the user is encouraged to try to correct the interference by one or more of the following measures:

- Reorient or relocate the receiving antenna.
- Increase the separation between the equipment and receiver.
- Connect the equipment into an outlet on a circuit different from that to which the receiver is connected.
- Consult the dealer or an experienced radio/TV technician for help important announcement .

## **Radiation Exposure Statement**

To comply with FCC RF exposure compliance requirements, this grant is applicable to only mobile configurations. The antennas used for this transmitter must be installed to provide a separation distance of at least 20 cm from all persons and must not be co-located or operating in conjunction with any other antenna or transmitter.