



Shenzhen Huaxia Testing Technology Co., Ltd.

1F., Block A of Tongsheng Technology Building, Huahui Road, Dalang Street, Longhua District, Shenzhen, China

Telephone: +86-755-26648640
Fax: +86-755-26648637
Website: www.cqa-cert.com

Report Template Version: V05
Report Template Revision Date: 2021-11-03

Test Report

Report No.: CQASZ20220300315E
Applicant: Shenzhen Jinlan Audio Visual Technology Co., Ltd
Address of Applicant: Floor 3, Building B, Building 5, Huating Road, Dalang Street, Longhua District, Shenzhen
Equipment Under Test (EUT):
EUT Name: Wireless Video Microphone
Model No.: AP001-C, AP001-T
Test Model No.: AP001-C
Brand Name: N/A
FCC ID: 2A5JD-AP001C
Standards: 47 CFR Part 15, Subpart C
Date of Receipt: 2022-03-04
Date of Test: 2022-03-04 to 2022-03-14
Date of Issue: 2022-03-24
Test Result: PASS*

*In the configuration tested, the EUT complied with the standards specified above

Tested By: Lewis Zhou

(Lewis Zhou)

Reviewed By: Rock Huang

(Rock Huang)

Approved By: Jack Ai

(Jack Ai)



1 Version

Revision History Of Report

Report No.	Version	Description	Issue Date
CQASZ20220300315E	Rev.01	Initial report	2022-03-24

2 Test Summary

Test Item	Test Requirement	Test method	Result
Antenna Requirement	47 CFR Part 15, Subpart C Section 15.203	ANSI C63.10 (2013)	PASS
AC Power Line Conducted Emission	47 CFR Part 15, Subpart C Section 15.207	ANSI C63.10 (2013)	PASS
Field Strength of the Fundamental Signal	47 CFR Part 15, Subpart C Section 15.249 (a)	ANSI C63.10 (2013)	PASS
Spurious Emissions	47 CFR Part 15, Subpart C Section 15.249 (a)/15.209	ANSI C63.10 (2013)	PASS
Restricted bands around fundamental frequency (Radiated Emission)	47 CFR Part 15, Subpart C Section 15.249(a)/15.205	ANSI C63.10 (2013)	PASS
20dB Occupied Bandwidth	47 CFR Part 15, Subpart C Section 15.215 (c)	ANSI C63.10 (2013)	PASS

3 Contents

	Page
1 VERSION.....	2
2 TEST SUMMARY.....	3
3 CONTENTS.....	4
4 GENERAL INFORMATION.....	5
4.1 CLIENT INFORMATION.....	5
4.2 GENERAL DESCRIPTION OF EUT.....	5
4.3 TEST ENVIRONMENT AND MODE.....	8
4.4 DESCRIPTION OF SUPPORT UNITS.....	8
4.5 STATEMENT OF THE MEASUREMENT UNCERTAINTY.....	9
4.6 TEST LOCATION.....	10
4.7 TEST FACILITY.....	10
4.8 DEVIATION FROM STANDARDS.....	10
4.9 ABNORMALITIES FROM STANDARD CONDITIONS.....	10
4.10 OTHER INFORMATION REQUESTED BY THE CUSTOMER.....	10
4.11 EQUIPMENT LIST.....	11
5 TEST RESULTS AND MEASUREMENT DATA.....	12
5.1 ANTENNA REQUIREMENT.....	12
5.2 CONDUCTED EMISSIONS.....	13
5.3 RADIATED EMISSION.....	16
5.4 20dB BANDWIDTH.....	24
6 PHOTOGRAPHS.....	27
6.1 RADIATED EMISSION TEST SETUP.....	27
6.2 CONDUCTED EMISSION TEST SETUP.....	28
6.3 EUT CONSTRUCTIONAL DETAILS.....	29

4 General Information

4.1 Client Information

Applicant:	Shenzhen Jinlan Audio Visual Technology Co., Ltd
Address of Applicant:	Floor 3, Building B, Building 5, Huating Road, Dalang Street, Longhua District, Shenzhen
Manufacturer:	Shenzhen Jinlan Audio Visual Technology Co., Ltd
Address of Manufacturer:	Floor 3, Building B, Building 5, Huating Road, Dalang Street, Longhua District, Shenzhen
Factory:	Shenzhen Jinlan Audio Visual Technology Co., Ltd
Address of Factory:	Floor 3, Building B, Building 5, Huating Road, Dalang Street, Longhua District, Shenzhen

4.2 General Description of EUT

EUT Name:	Wireless Video Microphone
Model No.:	AP001-C, AP001-T
Test Model No.:	AP001-C
Trade Mark:	N/A
Software Version:	AP001C-mic-2.prd
Hardware Version:	AP021C_LXMFI_RX-V1.2
Frequency Range:	2402MHz-2480MHz
Modulation Type:	GFSK
Number of Channels:	79
Sample Type:	<input type="checkbox"/> Mobile <input checked="" type="checkbox"/> Portable <input type="checkbox"/> Fix Location
Test Software of EUT:	BT_Tool V1.1.0
Antenna Type:	Chip antenna
Antenna Gain:	1.8 dBi
Power Supply:	Charging box: Li-ion battery: DC 3.7V 2000mAh, Charge by DC 5V for adapter Transmitter: Li-ion battery: DC 3.7V 230mAh, Charge by DC 3.7V for Charging box

Note:

Model No.: AP001-C, AP001-T

The model AP001-C was tested, since the electrical circuit design, layout, components used and internal wiring were identical for the above models, only difference of the appearance color and model name.

Operation Frequency each of channel					
Channel	Frequency	Channel	Frequency	Channel	Frequency
1	2402MHz	28	2429MHz	55	2456MHz
2	2403MHz	29	2430MHz	56	2457MHz
3	2404MHz	30	2431MHz	57	2458MHz
4	2405MHz	31	2432MHz	58	2459MHz
5	2402MHz	32	2433MHz	59	2460MHz
6	2407MHz	33	2434MHz	60	2461MHz
7	2408MHz	34	2435MHz	61	2462MHz
8	2409MHz	35	2436MHz	62	2463MHz
9	2410MHz	36	2437MHz	63	2464MHz
10	2411MHz	37	2441MHz	64	2465MHz
11	2412MHz	38	2439MHz	65	2466MHz
12	2413MHz	39	2440MHz	66	2467MHz
13	2414MHz	40	2441MHz	67	2468MHz
14	2415MHz	41	2442MHz	68	2469MHz
15	2416MHz	42	2443MHz	69	2480MHz
16	2417MHz	43	2444MHz	70	2471MHz
17	2418MHz	44	2445MHz	71	2472MHz
18	2419MHz	45	2446MHz	72	2473MHz
19	2420MHz	46	2447MHz	73	2474MHz
20	2421MHz	47	2448MHz	74	2475MHz
21	2422MHz	48	2449MHz	75	2476MHz
22	2423MHz	49	2450MHz	76	2477MHz
23	2424MHz	50	2451MHz	77	2478MHz
24	2425MHz	51	2452MHz	78	2479MHz
25	2426MHz	52	2453MHz	79	2480MHz
26	2427MHz	53	2454MHz		
27	2428MHz	54	2455MHz		

Note:

In section 15.31(m), regards to the operating frequency range over 10 MHz, the Lowest frequency, the middle frequency, and the highest frequency of channel were selected to perform the test, and the selected channel see below:

Channel	Frequency
The Lowest channel(CH1)	2402MHz
The Middle channel(CH40)	2441MHz
The Highest channel(CH79)	2480MHz

4.3 Test Environment and Mode

Operating Environment:	
Radiated Emissions:	
Temperature:	27 °C
Humidity:	59 % RH
Atmospheric Pressure:	1009mbar
Temperature:	26 °C
Humidity:	59 % RH
Atmospheric Pressure:	1009mbar
Radio conducted item test (RF Conducted test room):	
Temperature:	25.3 °C
Humidity:	55 % RH
Atmospheric Pressure:	1009mbar
Test mode:	
Transmitting mode:	Use test software (RF test) to set the lowest frequency, the middle frequency and the highest frequency keep transmitting of the EUT.

4.4 Description of Support Units

The EUT has been tested with associated equipment below.

1) Support equipment

Description	Manufacturer	Model No.	Certification	Supplied by
Adapter	/	/	/	CQA

2) Cable

Cable No.	Description	Manufacturer	Cable Type/Length	Supplied by
/	/	/	/	/

4.5 Statement of the measurement uncertainty

The data and results referenced in this document are true and accurate.

The reader is cautioned that there may be errors within the calibration limits of the equipment and facilities.

The measurement uncertainty was calculated for all measurements listed in this test report acc. to CISPR 16 - 4 „Specification for radio disturbance and immunity measuring apparatus and methods – Part 4: Uncertainty in EMC Measurements“ and is documented in the **Shenzhen Huaxia Testing Technology Co., Ltd.** quality system acc. to DIN EN ISO/IEC 17025.

Furthermore, component and process variability of devices similar to that tested may result in additional deviation. The manufacturer has the sole responsibility of continued compliance of the device.

Hereafter the best measurement capability for **CQA** laboratory is reported:

Test	Range	Uncertainty	Notes
Radiated Emission	Below 1GHz	5.12dB	(1)
Radiated Emission	Above 1GHz	4.60dB	(1)
Conducted Disturbance	0.15~30MHz	3.34dB	(1)

(1) This uncertainty represents an expanded uncertainty expressed at approximately the 95% confidence level using a coverage factor of $k=2$.

4.6 Test Location

All tests were performed at:

Shenzhen Huaxia Testing Technology Co., Ltd.

1F., Block A of Tongsheng Technology Building, Huahui Road, Dalang Street, Longhua District, Shenzhen, China

4.7 Test Facility

- **A2LA (Certificate No. 4742.01)**

Shenzhen Huaxia Testing Technology Co., Ltd., Shenzhen EMC Laboratory is accredited by the American Association for Laboratory Accreditation(A2LA). Certificate No. 4742.01.

- **FCC Registration No.: 522263**

Shenzhen Huaxia Testing Technology Co., Ltd., Shenzhen EMC Laboratory has been registered and fully described in a report filed with the (FCC) Federal Communications Commission. The acceptance letter from the FCC is maintained in our files. Registration No.:522263

4.8 Deviation from Standards

None.

4.9 Abnormalities from Standard Conditions

None.

4.10 Other Information Requested by the Customer

None.

4.11 Equipment List

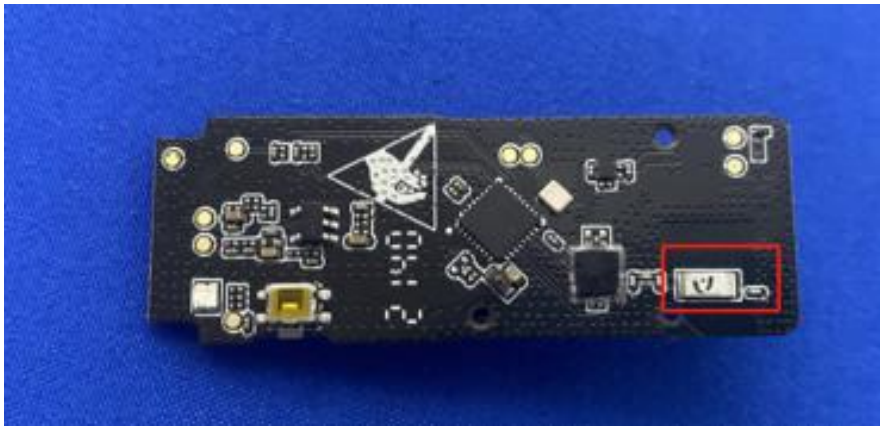
Test Equipment	Manufacturer	Model No.	Instrument No.	Calibration Date	Calibration Due Date
EMI Test Receiver	R&S	ESR7	CQA-005	2021/9/10	2022/9/9
Spectrum analyzer	R&S	FSU26	CQA-038	2021/9/10	2022/9/9
Preamplifier	MITEQ	AMF-6D-02001800-29-20P	CQA-036	2021/9/10	2022/9/9
Loop antenna	Schwarzbeck	FMZB1516	CQA-060	2021/9/16	2024/9/15
Bilog Antenna	R&S	HL562	CQA-011	2021/9/16	2024/9/15
Horn Antenna	R&S	HF906	CQA-012	2021/9/16	2024/9/15
Horn Antenna	Schwarzbeck	BBHA 9170	CQA-088	2021/9/16	2024/9/15
Coaxial Cable (Above 1GHz)	CQA	N/A	C007	2021/9/10	2022/9/9
Coaxial Cable (Below 1GHz)	CQA	N/A	C013	2021/9/10	2022/9/9
Antenna Connector	CQA	RFC-01	CQA-080	2021/9/10	2022/9/9
RF cable(9KHz~40GHz)	CQA	RF-01	CQA-079	2021/9/10	2022/9/9
Power divider	MIDWEST	PWD-2533-02-SMA-79	CQA-067	2021/9/10	2022/9/9

Note:

The temporary antenna connector is soldered on the pcb board in order to perform conducted tests and this temporary antenna connector is listed in the equipment list.

5 Test results and Measurement Data

5.1 Antenna Requirement

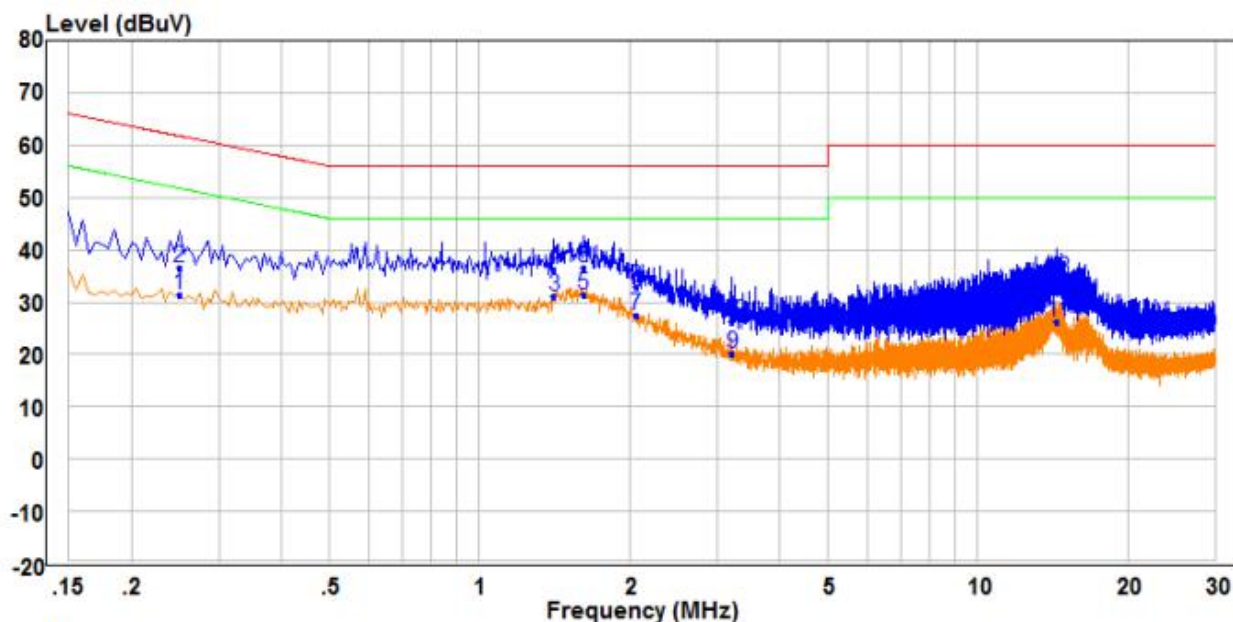
Standard requirement:	47 CFR Part 15C Section 15.203
<p>15.203 requirement:</p> <p>An intentional radiator shall be designed to ensure that no antenna other than that furnished by the responsible party shall be used with the device. The use of a permanently attached antenna or of an antenna that uses a unique coupling to the intentional radiator, the manufacturer may design the unit so that a broken antenna can be replaced by the user, but the use of a standard antenna jack or electrical connector is prohibited.</p>	
EUT Antenna:	
The antenna is Chip antenna. The best case gain of the antenna is 1.8dBi.	

Page:13 of 34

Test Mode:	Charge mode.
Final Test Mode:	Charge mode
Test Results:	Pass

Measurement Data:

Live line:

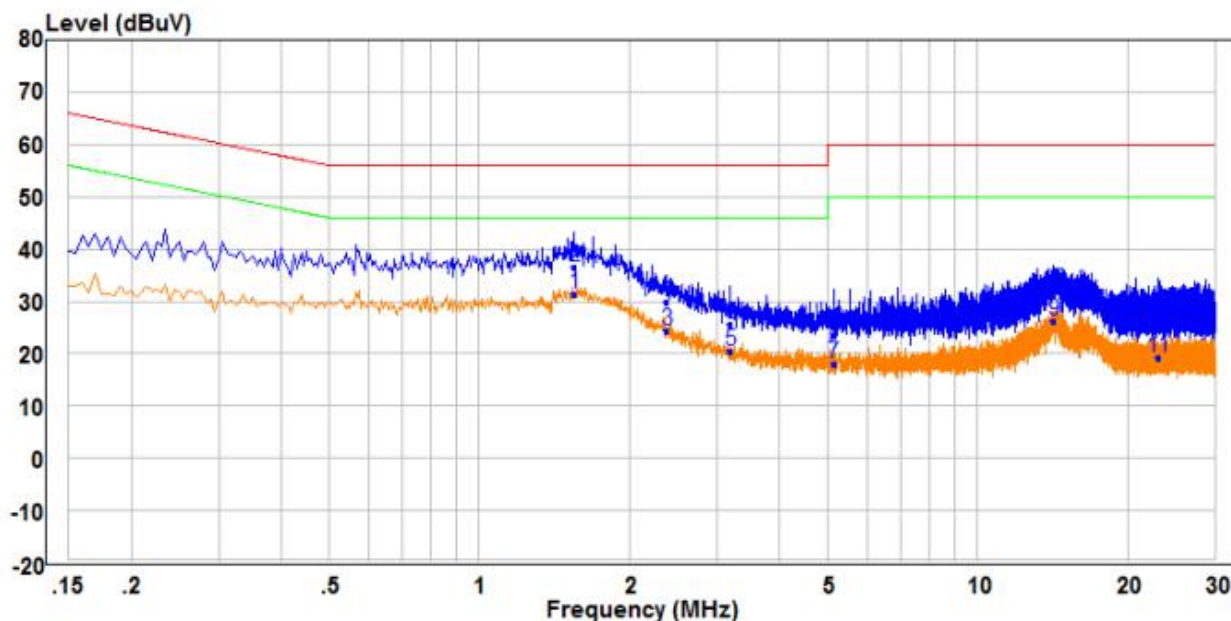


	Freq	Read Level	Factor	Level	Limit Line	Over Limit	Remark	Pol/Phase
	MHz	dBuV	dB	dBuV	dBuV	dB		
1	0.250	21.96	9.49	31.45	51.76	-20.31	Average	Line
2	0.250	27.19	9.49	36.68	61.76	-25.08	QP	Line
3	1.410	21.52	9.53	31.05	46.00	-14.95	Average	Line
4	1.410	26.82	9.53	36.35	56.00	-19.65	QP	Line
5 PP	1.620	21.78	9.53	31.31	46.00	-14.69	Average	Line
6 QP	1.620	27.04	9.53	36.57	56.00	-19.43	QP	Line
7	2.060	17.89	9.53	27.42	46.00	-18.58	Average	Line
8	2.060	23.32	9.53	32.85	56.00	-23.15	QP	Line
9	3.225	10.63	9.62	20.25	46.00	-25.75	Average	Line
10	3.225	16.45	9.62	26.07	56.00	-29.93	QP	Line
11	14.440	16.44	9.89	26.33	50.00	-23.67	Average	Line
12	14.440	24.46	9.89	34.35	60.00	-25.65	QP	Line

Remark:

1. The following Quasi-Peak and Average measurements were performed on the EUT:
2. Final Test Level =Receiver Reading + LISN Factor + Cable Loss.
3. If the Peak value under Average limit, the Average value is not recorded in the report.

Neutral line:



		Read			Limit	Over			
	Freq	Level	Factor	Level	Line	Limit	Remark	Pol/Phase	
	MHz	dBuV	dB	dBuV	dBuV	dB			
1	PP	1.555	21.69	9.73	31.42	46.00	-14.58	Average	Neutral
2	QP	1.555	26.71	9.73	36.44	56.00	-19.56	QP	Neutral
3		2.385	14.73	9.75	24.48	46.00	-21.52	Average	Neutral
4		2.385	20.25	9.75	30.00	56.00	-26.00	QP	Neutral
5		3.195	10.65	9.77	20.42	46.00	-25.58	Average	Neutral
6		3.195	15.89	9.77	25.66	56.00	-30.34	QP	Neutral
7		5.145	8.13	9.83	17.96	50.00	-32.04	Average	Neutral
8		5.145	13.60	9.83	23.43	60.00	-36.57	QP	Neutral
9		14.230	16.33	9.75	26.08	50.00	-23.92	Average	Neutral
10		14.230	22.19	9.75	31.94	60.00	-28.06	QP	Neutral
11		23.055	9.35	9.97	19.32	50.00	-30.68	Average	Neutral
12		23.055	16.81	9.97	26.78	60.00	-33.22	QP	Neutral

Remark:

1. The following Quasi-Peak and Average measurements were performed on the EUT:
2. Final Test Level =Receiver Reading + LISN Factor + Cable Loss.
3. If the Peak value under Average limit, the Average value is not recorded in the report.

5.3 Radiated Emission

Test Requirement:	47 CFR Part 15C Section 15.249 and 15.209 and 15.205				
Test Method:	ANSI C63.10: 2013				
Test Site:	Measurement Distance: 3m (Semi-Anechoic Chamber)				
Receiver Setup:	Frequency	Detector	RBW	VBW	Remark
	0.009MHz-0.090MHz	Peak	10kHz	30KHz	Peak
	0.009MHz-0.090MHz	Average	10kHz	30KHz	Average
	0.090MHz-0.110MHz	Quasi-peak	10kHz	30KHz	Quasi-peak
	0.110MHz-0.490MHz	Peak	10kHz	30KHz	Peak
	0.110MHz-0.490MHz	Average	10kHz	30KHz	Average
	0.490MHz -30MHz	Quasi-peak	10kHz	30kHz	Quasi-peak
	30MHz-1GHz	Quasi-peak	100 kHz	300KHz	Quasi-peak
	Above 1GHz	Peak	1MHz	3MHz	Peak
		Peak	1MHz	10Hz	Average
Note: For fundamental frequency, RBW=5MHz, VBW=5MHz, Peak detector is for PK value, RMS detector is for Average value.					
Limit: (Spurious Emissions and band edge)	Frequency	Field strength (microvolt/meter)	Limit (dBuV/m)	Remark	Measurement distance (m)
	0.009MHz-0.490MHz	2400/F(kHz)	-	-	300
	0.490MHz-1.705MHz	24000/F(kHz)	-	-	30
	1.705MHz-30MHz	30	-	-	30
	30MHz-88MHz	100	40.0	Quasi-peak	3
	88MHz-216MHz	150	43.5	Quasi-peak	3
	216MHz-960MHz	200	46.0	Quasi-peak	3
	960MHz-1GHz	500	54.0	Quasi-peak	3
	Above 1GHz	500	54.0	Average	3
	Note: 1) 15.35(b), Unless otherwise specified, the limit on peak radio frequency emissions is 20dB above the maximum permitted average emission limit applicable to the equipment under test. This peak limit applies to the total peak emission level radiated by the device. 2) Emissions radiated outside of the specified frequency bands, except for harmonics, shall be attenuated by at least 50 dB below the level of the fundamental or to the general radiated emission limits in Section 15.209, whichever is the lesser attenuation.				
Limit: (Field strength of the fundamental signal)	Frequency	Limit (dBuV/m @3m)		Remark	
	2400MHz-2483.5MHz	94.0		Average Value	
		114.0		Peak Value	

Test Setup:

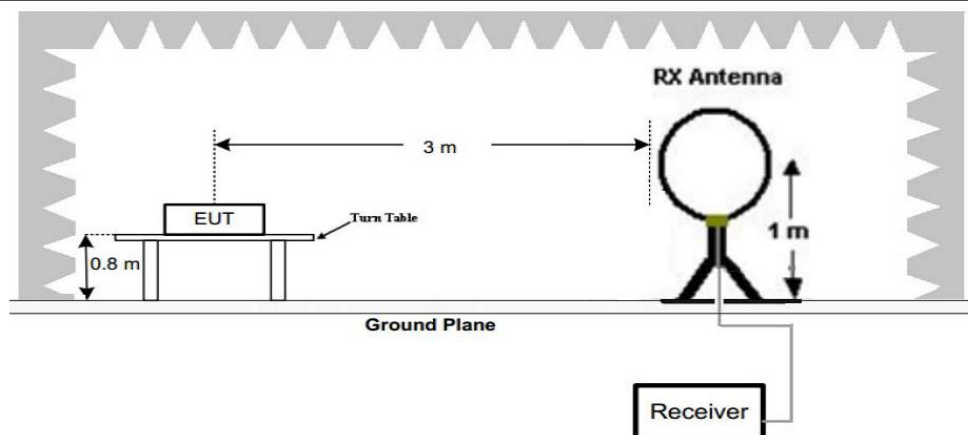


Figure 1. Below 30MHz

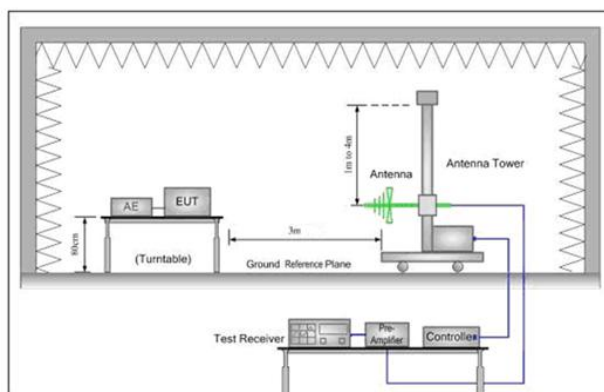


Figure 2. 30MHz to 1GHz

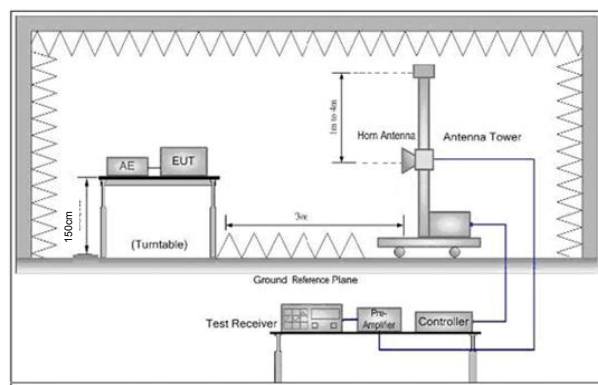


Figure 3. Above 1 GHz

Test Procedure:

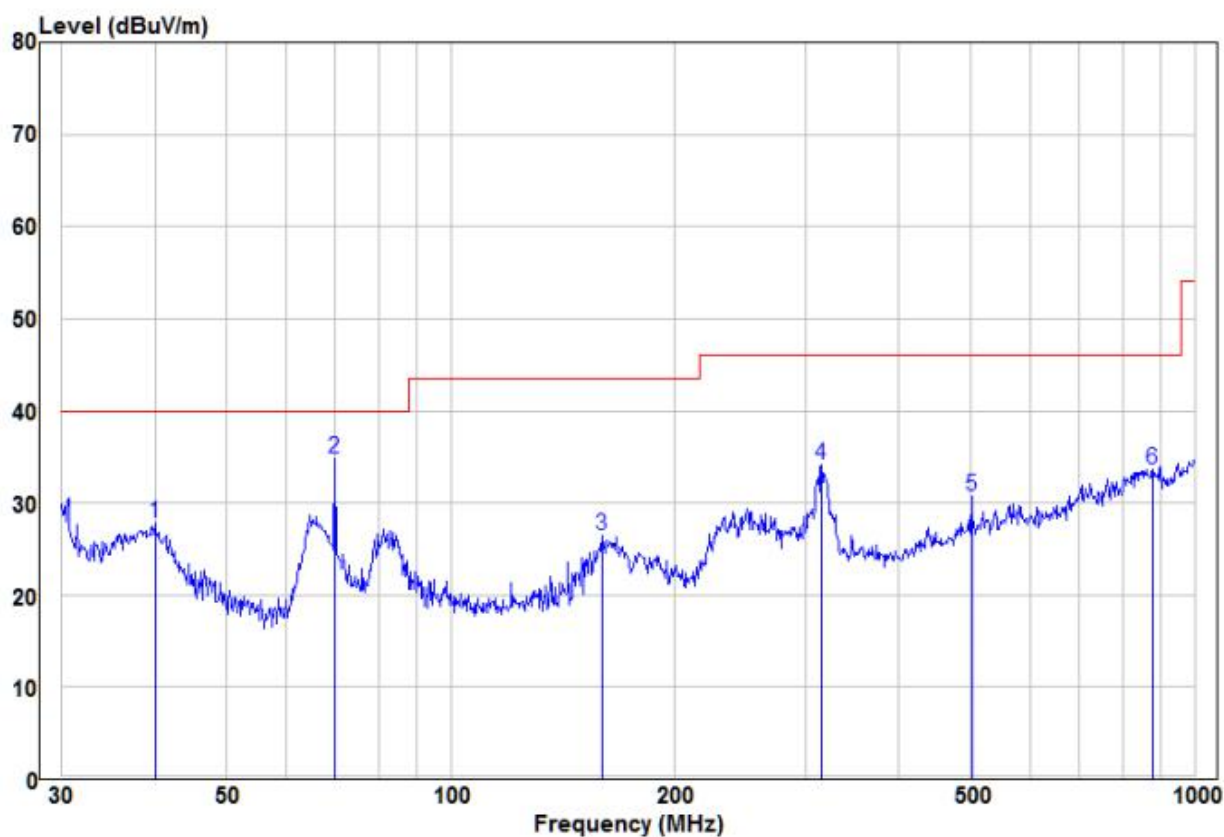
- 1) Below 1G: The EUT was placed on the top of a rotating table 0.8 meters above the ground at a 3 meter semi-anechoic chamber. The table was rotated 360 degrees to determine the position of the highest radiation.
 - 2) Above 1G: The EUT was placed on the top of a rotating table 1.5 meters above the ground at a 3 meter semi-anechoic chamber. The table was rotated 360 degrees to determine the position of the highest radiation.
- Note: For the radiated emission test above 1GHz:
Place the measurement antenna away from each area of the EUT determined to be a source of emissions at the specified measurement distance, while keeping the measurement antenna aimed at the source of emissions at each frequency of significant emissions, with polarization oriented for maximum response. The measurement antenna may have to be higher or lower than the EUT, depending on the radiation pattern of the emission and staying aimed at the emission source for receiving the maximum signal. The final measurement antenna elevation shall be that which maximizes the emissions. The measurement antenna elevation for maximum emissions shall be restricted to a range of heights of from 1 m to 4 m above the ground or reference ground plane.
- The EUT was set 3 meters away from the interference-receiving antenna, which was mounted on the top of a variable-height antenna tower.
 - The antenna height is varied from one meter to four meters above the ground to determine the maximum value of the field strength. Both horizontal and vertical polarizations of the antenna are set to make the measurement.
 - For each suspected emission, the EUT was arranged to its worst case and then the antenna was tuned to heights from 1 meter to 4 meters (for the test frequency of below 30MHz, the antenna was tuned to heights 1 meter) and the rotatable table

	<p>was turned from 0 degrees to 360 degrees to find the maximum reading.</p> <p>e. The test-receiver system was set to Peak Detect Function and Specified Bandwidth with Maximum Hold Mode.</p> <p>f. If the emission level of the EUT in peak mode was 10dB lower than the limit specified, then testing could be stopped and the peak values of the EUT would be reported. Otherwise the emissions that did not have 10dB margin would be re-tested one by one using peak, quasi-peak or average method as specified and then reported in a data sheet.</p> <p>g. Test the EUT in the lowest channel,the middle channel,the Highest channel</p> <p>h. The radiation measurements are performed in X, Y, Z axis positioning for Transmitting mode,And found the X axis positioning which it is worse case.</p> <p>i. Repeat above procedures until all frequencies measured was complete.</p>
Exploratory Test Mode:	WirelessTransmitting mode
Final Test Mode:	For below 1GHz part, through pre-scan, the worst case is the lowest channel. Only the worst case is recorded in the report.
Test Results:	Pass

Measurement Data

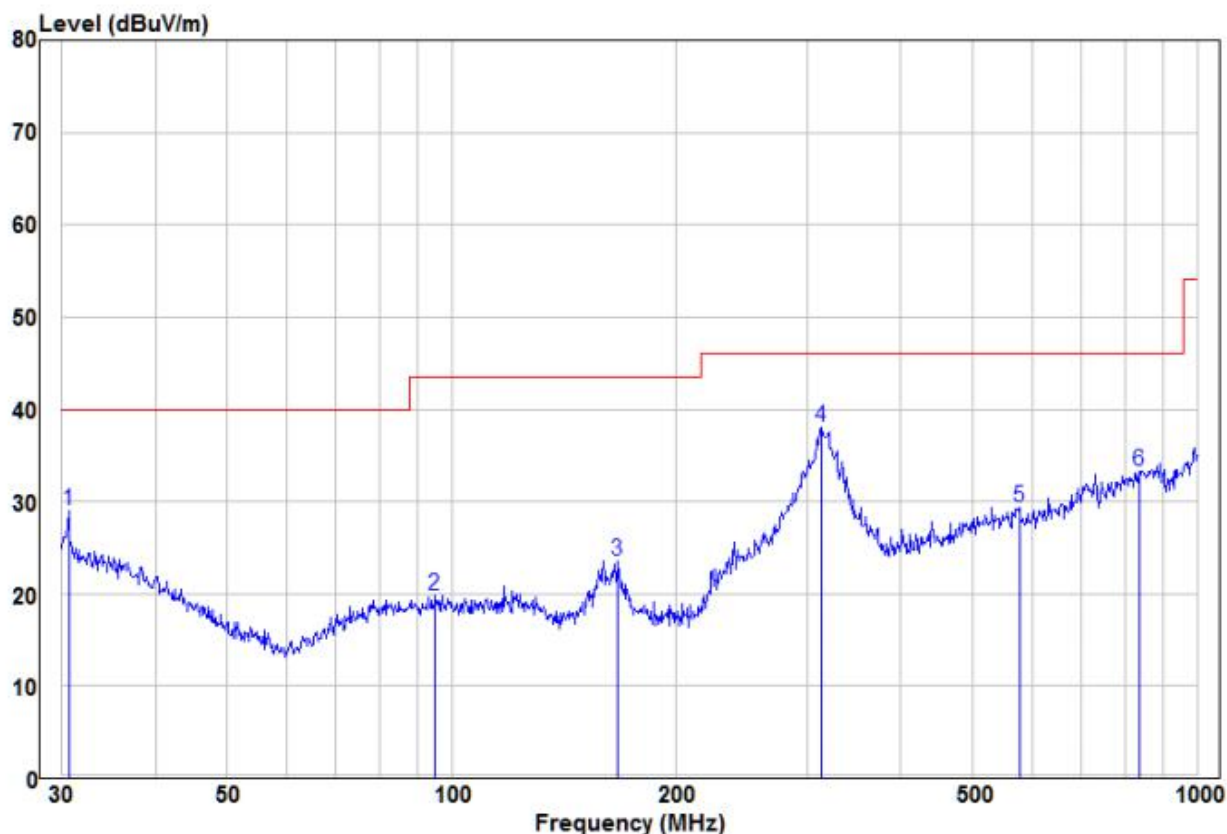
30MHz~1GHz

Vertical



	Freq	Read Level	Factor	Level	Limit Line	Over Limit	Remark	Pol/Phase
	MHz	dBuV	dB/m	dBuV/m	dBuV/m	dB		
1	39.99	15.06	12.80	27.86	40.00	-12.14	Peak	VERTICAL
2 pp	69.84	26.62	8.10	34.72	40.00	-5.28	Peak	VERTICAL
3	159.78	18.70	7.81	26.51	43.50	-16.99	Peak	VERTICAL
4	314.38	20.08	14.08	34.16	46.00	-11.84	Peak	VERTICAL
5	501.18	12.38	18.29	30.67	46.00	-15.33	Peak	VERTICAL
6	878.32	9.61	23.93	33.54	46.00	-12.46	Peak	VERTICAL

Horizontal



	Freq	Read Level	Factor	Level	Limit Line	Over Limit	Remark	Pol/Phase
	MHz	dBuV	dB/m	dBuV/m	dBuV/m	dB		
1	30.64	13.30	15.74	29.04	40.00	-10.96	Peak	HORIZONTAL
2	95.09	9.47	10.34	19.81	43.50	-23.69	Peak	HORIZONTAL
3	166.65	15.93	7.68	23.61	43.50	-19.89	Peak	HORIZONTAL
4 pp	313.28	23.98	14.06	38.04	46.00	-7.96	Peak	HORIZONTAL
5	576.64	10.46	18.91	29.37	46.00	-16.63	Peak	HORIZONTAL
6	836.24	9.14	24.12	33.26	46.00	-12.74	Peak	HORIZONTAL

Above 1GHz							
Test mode:		Transmitting		Test channel:		Lowest	
Frequency	Meter Reading	Factor	Emission Level	Limits	Over	Detector Type	Ant. Pol.
(MHz)	(dB μ V)	(dB)	(dB μ V/m)	(dB μ V/m)	(dB)		H/V
2390	62.22	-9.2	53.02	74	-20.98	Peak	H
2390	44.89	-9.2	35.69	54	-18.31	AVG	H
2400	46.34	-9.39	36.95	74	-37.05	Peak	H
2400	45.46	-9.39	36.07	54	-17.93	AVG	H
2402	99.79	-9.33	90.46	114	-23.54	peak	H
2402	97.57	-9.33	88.24	94	-5.76	AVG	H
4804	56.11	-4.28	51.83	74	-22.17	peak	H
4804	42.81	-4.28	38.53	54	-15.47	AVG	H
7206	53.17	1.13	54.30	74	-19.70	peak	H
7206	37.94	1.13	39.07	54	-14.93	AVG	H
2390	60.23	-9.2	51.03	74	-22.97	peak	V
2390	44.65	-9.2	35.45	54	-18.55	AVG	V
2400	60.74	-9.39	51.35	74	-22.65	peak	V
2400	45.77	-9.39	36.38	54	-17.62	AVG	V
2402	95.67	-9.33	86.34	114	-27.66	peak	V
2402	90.80	-9.33	81.47	94	-12.53	AVG	V
4804	56.77	-4.28	52.49	74	-21.51	peak	V
4804	41.68	-4.28	37.40	54	-16.60	AVG	V
7206	52.15	1.13	53.28	74	-20.72	peak	V
7206	36.53	1.13	37.66	54	-16.34	AVG	V

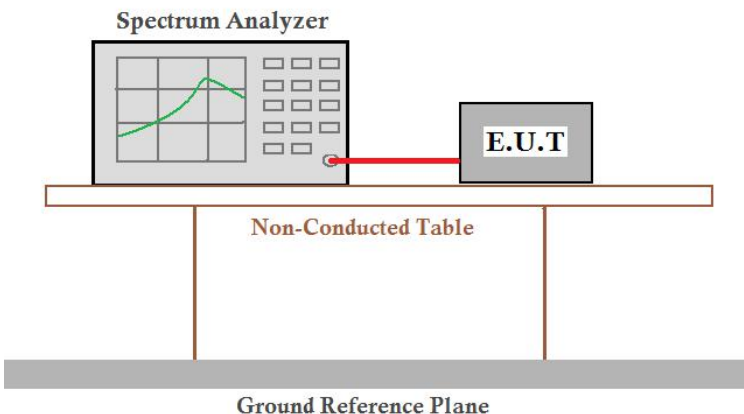
Test mode:		Transmitting		Test channel:		Middle	
Frequency	Meter Reading	Factor	Emission Level	Limits	Over	Detector Type	Ant. Pol.
(MHz)	(dBμV)	(dB)	(dBμV/m)	(dBμV/m)	(dB)		H/V
2441	97.85	-9.37	88.48	114	-25.52	peak	H
2441	95.97	-9.37	86.60	94	-7.40	AVG	H
4882	56.01	-4.14	51.87	74	-22.13	peak	H
4882	43.15	-4.14	39.01	54	-14.99	AVG	H
7323	52.99	0.56	53.55	74	-20.45	peak	H
7323	38.50	0.56	39.06	54	-14.94	AVG	H
2441	96.27	-9.36	86.91	114	-27.09	peak	V
2441	95.11	-9.36	85.75	94	-8.25	AVG	V
4882	57.08	-4.14	52.94	74	-21.06	peak	V
4882	41.56	-4.14	37.42	54	-16.58	AVG	V
7323	51.01	0.56	51.57	74	-22.43	peak	V
7323	38.32	0.56	38.88	54	-15.12	AVG	V

Test mode:		Transmitting		Test channel:		Highest	
Frequency	Meter Reading	Factor	Emission Level	Limits	Over	Detector Type	Ant. Pol.
(MHz)	(dBμV)	(dB)	(dBμV/m)	(dBμV/m)	(dB)		H/V
2480	100.04	-9.23	90.81	114	-23.19	peak	H
2480	95.68	-9.23	86.45	94	-7.55	AVG	H
2483.5	59.77	-9.29	50.48	74	-23.52	Peak	H
2483.5	45.57	-9.29	36.28	54	-17.72	AVG	H
4960	56.34	-4.03	52.31	74	-21.69	peak	H
4960	43.55	-4.03	39.52	54	-14.48	AVG	H
7440	51.03	1.68	52.71	74	-21.29	peak	H
7440	38.18	1.68	39.86	54	-14.14	AVG	H
2480	98.27	-9.23	89.04	114	-24.96	peak	V
2480	94.14	-9.23	84.91	94	-9.09	AVG	V
2483.5	59.79	-9.29	50.50	74	-23.50	peak	V
2483.5	44.94	-9.29	35.65	54	-18.35	AVG	V
4960	55.76	-4.03	51.73	74	-22.27	peak	V
4960	43.38	-4.03	39.35	54	-14.65	AVG	V
7440	52.01	1.68	53.69	74	-20.31	peak	V
7440	37.43	1.68	39.11	54	-14.89	AVG	V

Remark:

- 1) The field strength is calculated by adding the Antenna Factor, Cable Factor & Preamplifier. The basic equation with a sample calculation is as follows:
Final Test Level = Receiver Reading + Antenna Factor + Cable Factor – Preamplifier Factor
- 2) Scan from 9kHz to 25GHz, The disturbance above 10GHz and below 30MHz was very low, and the above harmonics were the highest point could be found when testing, so only the above harmonics had been displayed. The amplitude of spurious emissions from the radiator which are attenuated more than 20dB below the limit need not be reported .

5.4 20dB Bandwidth

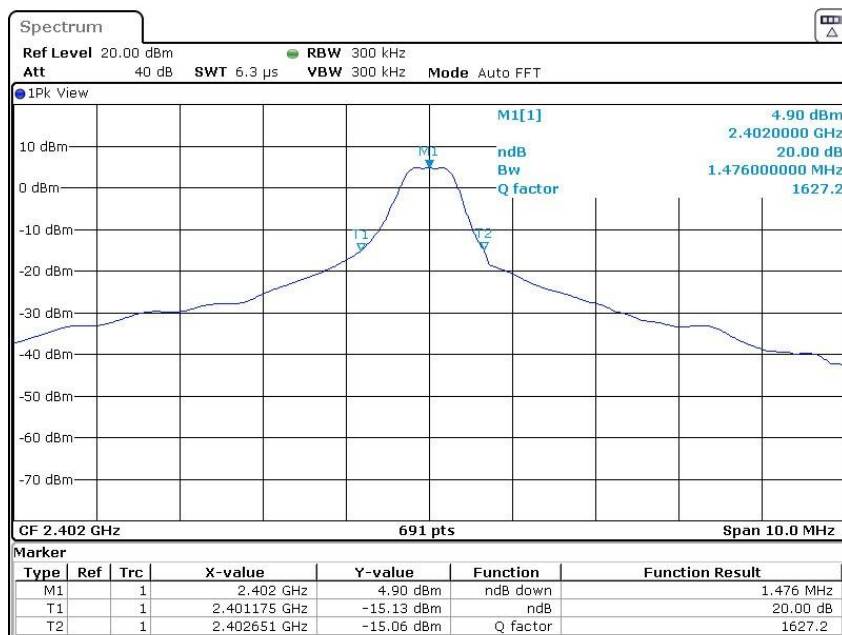
Test Requirement:	47 CFR Part 15C Section 15.215
Test Method:	ANSI C63.10:2013
Test Setup:	 <p>The diagram illustrates the test setup. A Spectrum Analyzer is connected to an E.U.T. (Equipment Under Test) via a red cable. Both the Spectrum Analyzer and the E.U.T. are placed on a Non-Conducted Table. The table is supported by two vertical legs and sits on a Ground Reference Plane.</p>
Test Mode:	Transmitting with OFDM modulation.
Limit:	N/A
Test Results:	Pass

Measurement Data

Test channel	20dB bandwidth (MHz)	Results
Lowest	1.476	Pass
Middle	1.433	Pass
Highest	1.462	Pass

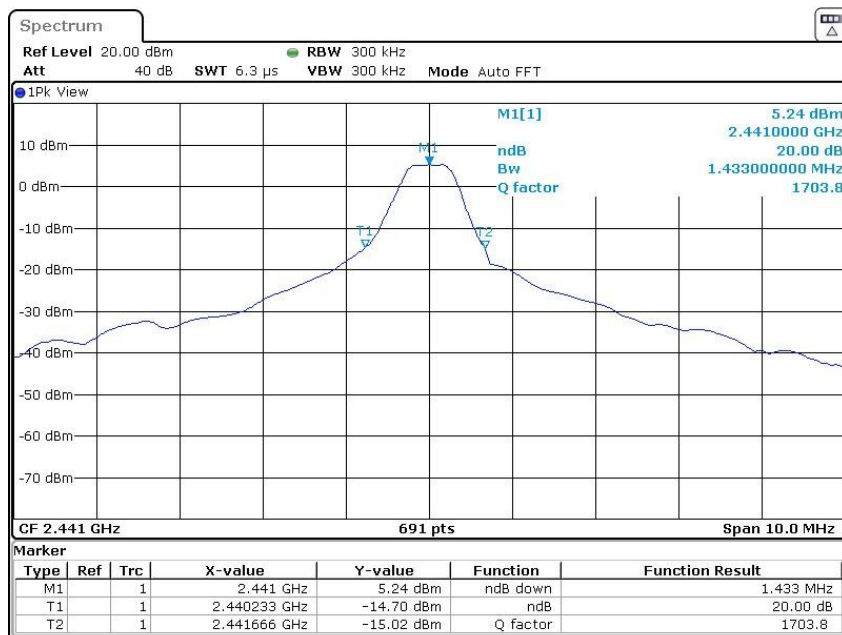
Test plot as follows:

Test channel: Lowest



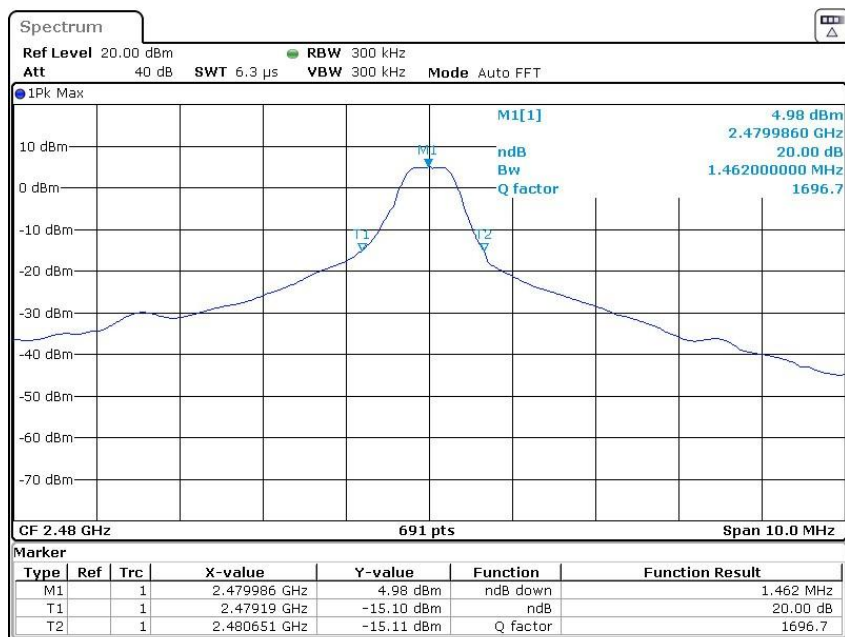
Date: 8 MAR.2022 11:33:50

Test channel: Middle



Date: 8 MAR.2022 11:37:38

Test channel: Highest

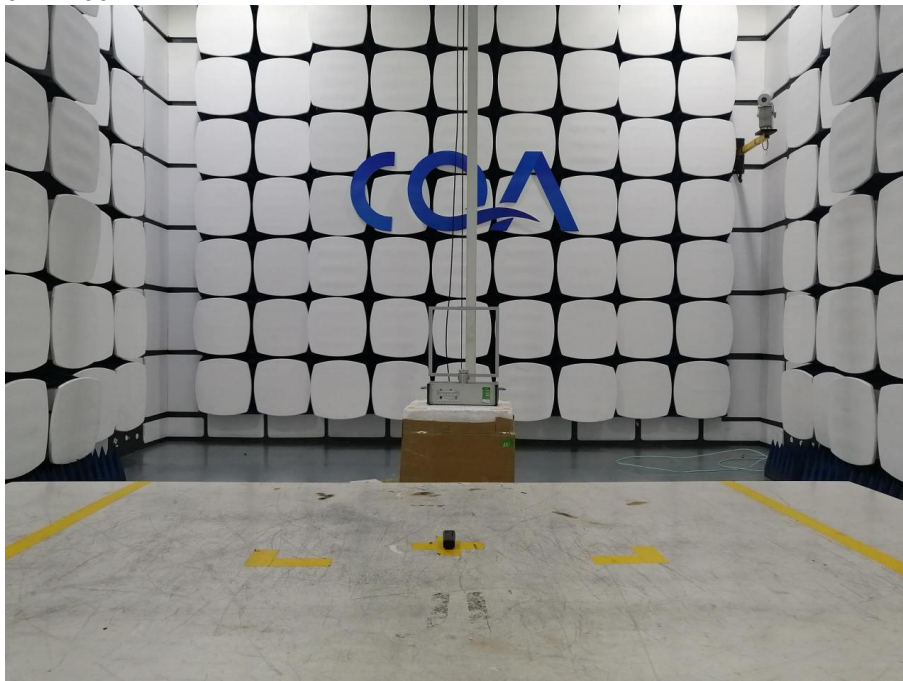


Date: 8.MAR.2022 11:40:04

6 Photographs

6.1 Radiated Emission Test Setup

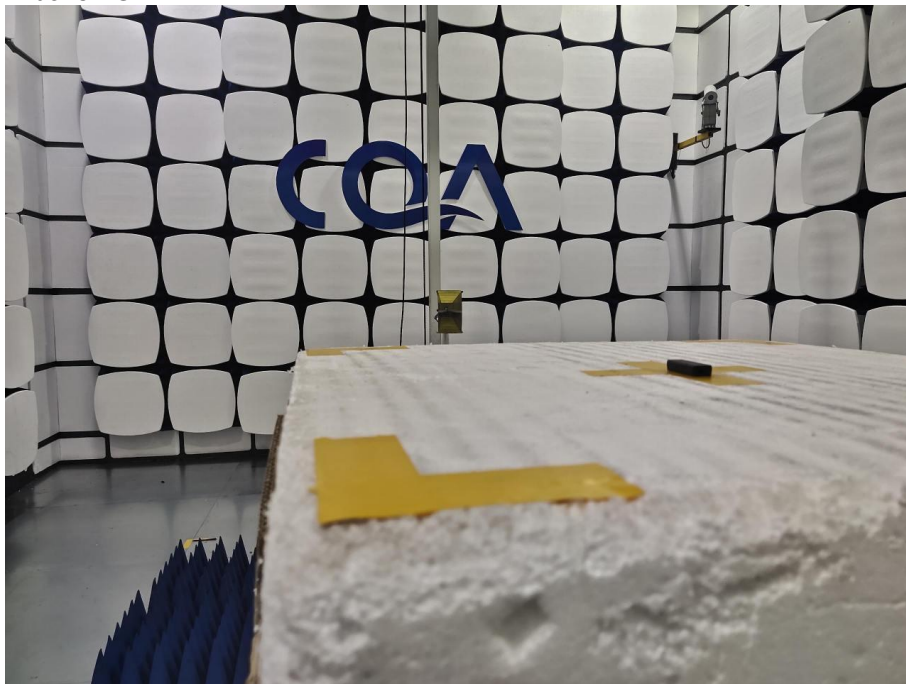
9kHz~30MHz



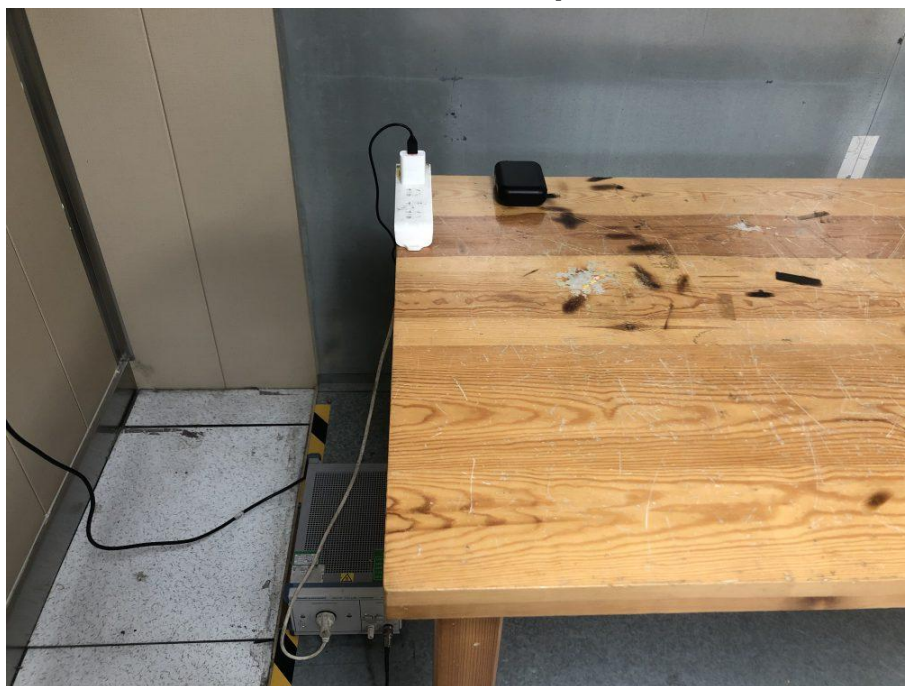
30MHz~1GHz:



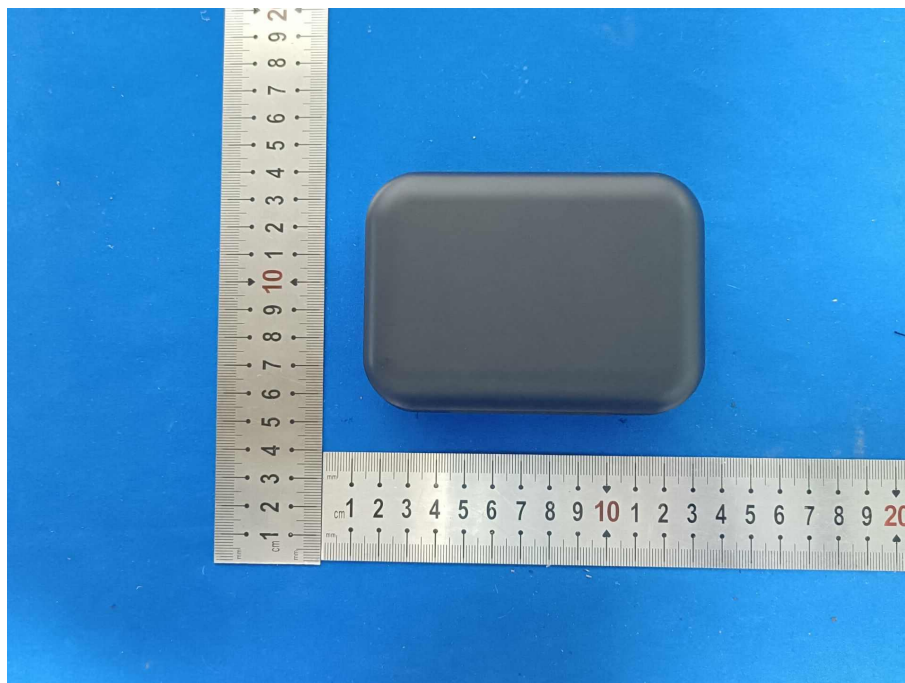
Above 1GHz:



6.2 Conducted Emission Test Setup

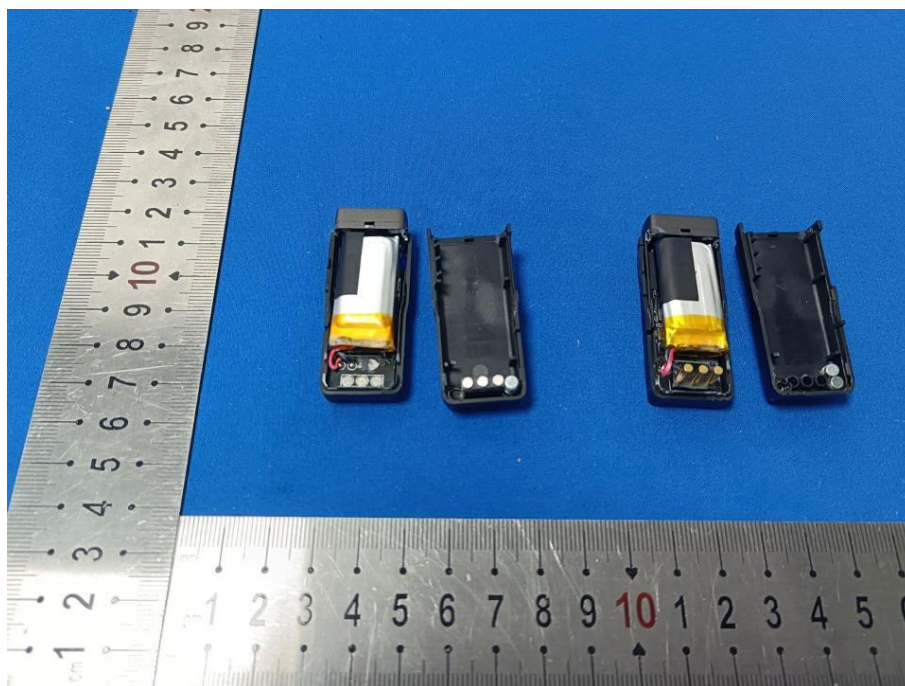


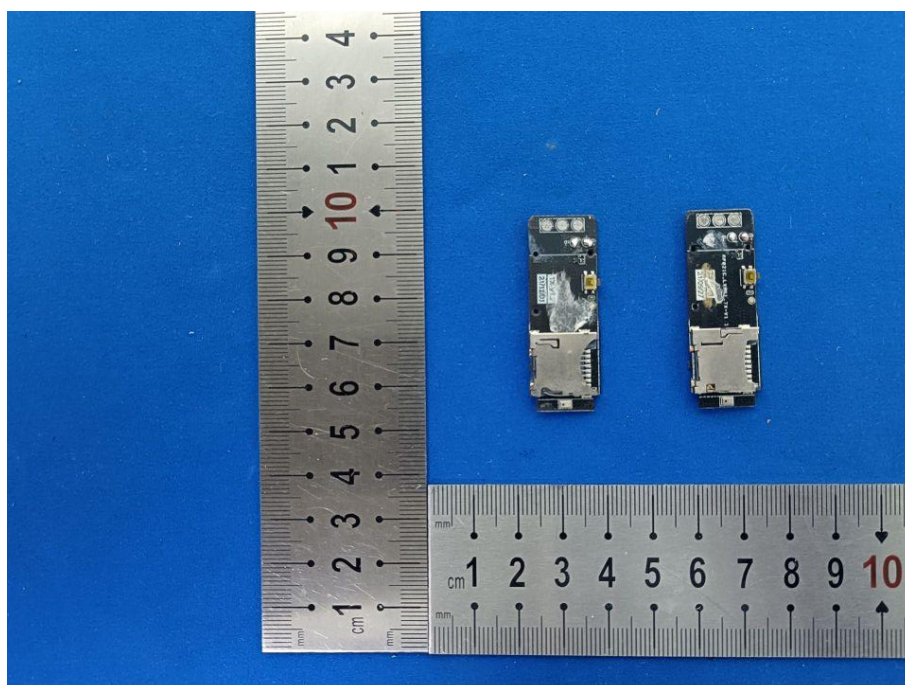
6.3 EUT Constructional Details

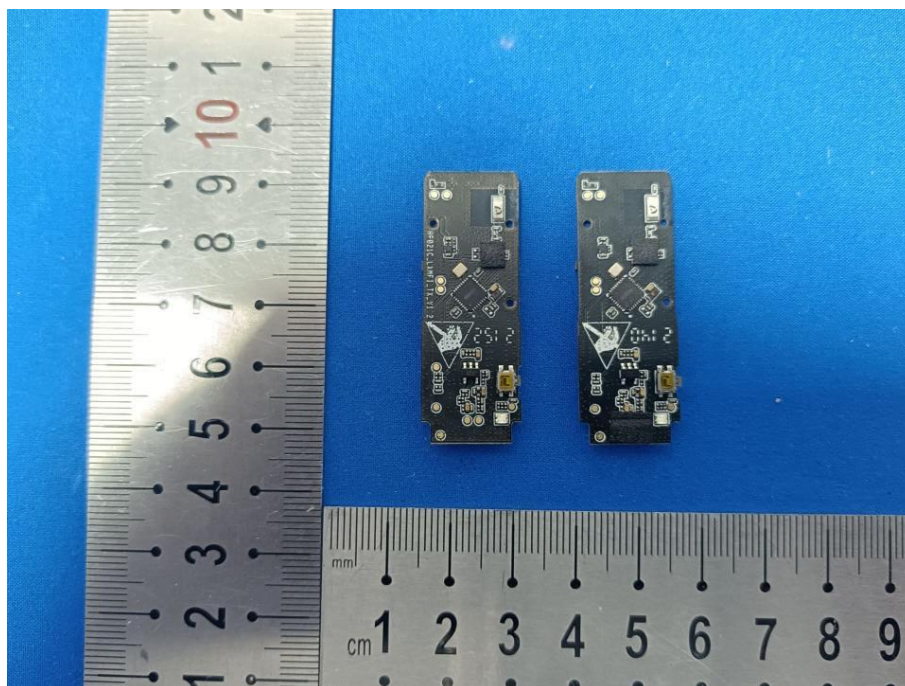
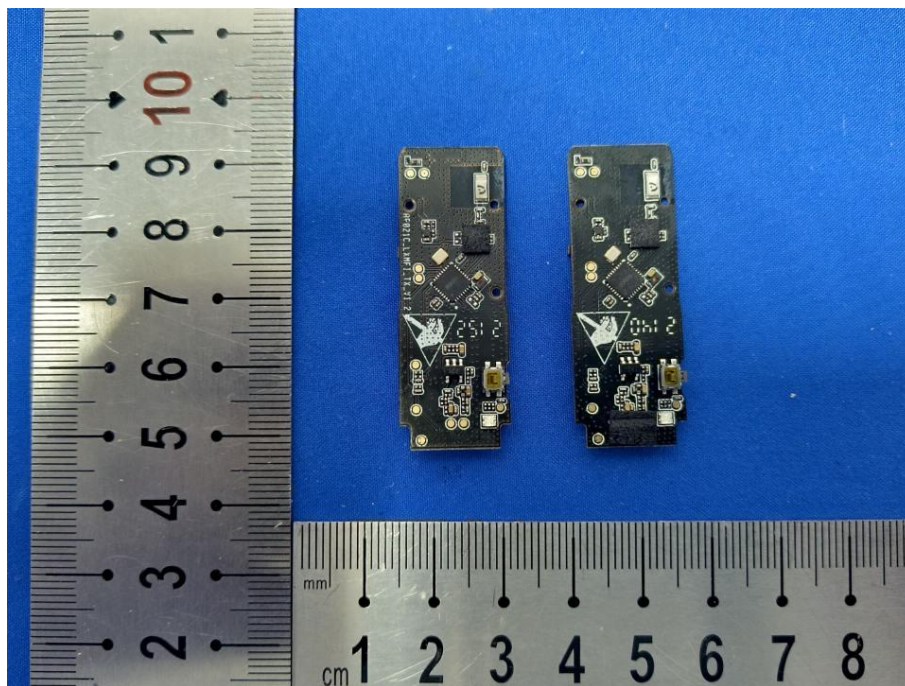












*** END OF REPORT ***