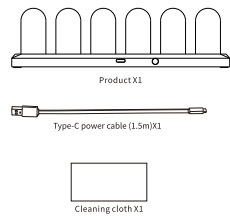


IPSTUBE

Product accessories



Switching operation

Press and hold for 5 seconds: Factory reset
Short press: switch watch faces.

Press twice in succession: Turn on the weather display or turn off the weather display.

Product features

The lighting can be set freely, the picture can be customized, and multiple dials such as custom clock background can set parameters.

Technical support

www.ipstube.com

ips@ipstube.com

YouTube:<https://www.youtube.com/@IPStube>

Product parameter

product name	IPSTUBE Nixie tube
product model	HN-H401
Input voltage	DC5V
rated power	2.5W

Download APP

1. Search "IPSTUBE" in the Apple Store to download and install.
2. Search "IPSTUBE" in the Google Play Store to download and install.
3. Use your mobile phone to scan the QR code on the right to download and install.



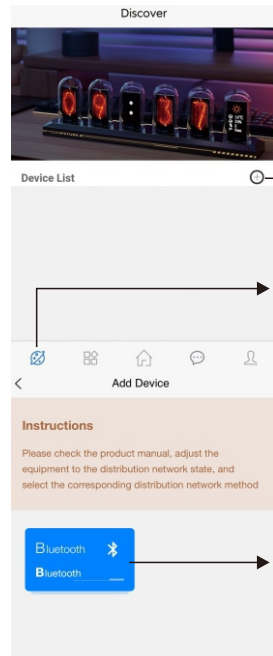
Register an account

Register an account with a mobile phone number or use an email to retrieve a password to register an account.

Device Pairing Requirements

Bluetooth, WiFi, and mobile phone positioning must be turned on, and WiFi must be 2.4GHz.

Device pairing steps

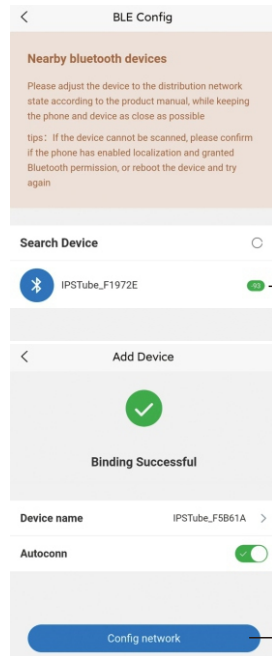


Step 2: Click the "+" sign to add Bluetooth.

Step 1: Select the first icon on the lower left.

Step 3: Click on the Bluetooth distribution network.

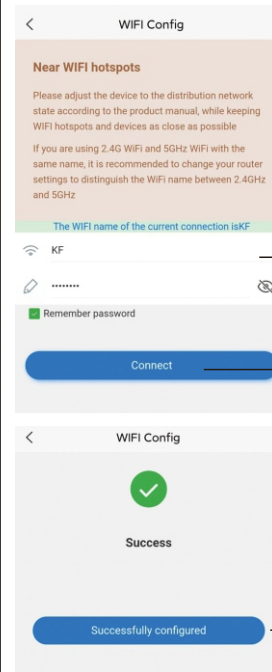
Device pairing steps



Step 4: Click on the Bluetooth device.

Step 5: Click to configure network.

Device pairing steps



Step 6: Enter WiFi name and WiFi password.
Note: WiFi must be 2.4GHz.

Step Seven: Click on Connect.

Step 8: Click Configure to finish.

FCC Warning statement:

This device complies with part 15 of the FCC Rules. Operation is subject to the following two conditions:(1) This device may not cause harmful interference, and (2) this device must accept any interference received,including interference that may cause undesired operation.

Any Changes or modifications not expressly approved by the party responsible for compliance could void the user's authority to operate the equipment.

This equipment has been tested and found to comply with the limits for a Class B digital device,pursuant to part 15 of the FCC Rules. These limits are designed to provide reasonable protectionagainst harmful interference in a residential installation. This equipment generates uses and can radiate radio frequency energy and, if not installed and used in accordance with the instructions,may cause harmful interference to radio communications. However, there is no guarantee that interference will not occur in a particular installation. If this equipment does cause harmful interference to radio or television reception, which can be determined by turning the equipment off and on, the user is encouraged to try to correct the interference by one or more of the following measures:
-Reorient or relocate the receiving antenna.
-Increase the separation between the equipment and receiver.
-Connect the equipment into an outlet on a circuit different from that to which the receiver isconnected.
-Consult the dealer or an experienced radio/TV technician for help.

FCC RF exposure statement:

The equipment complies with FCC radiation exposure limits set forth for an uncontrolled environment. This equipment should be installed and operated with minimum distance between20cm the radiator your body.