

# 封面

## Mini Camera



## Quick User Guide >>>

## Quick User Guide

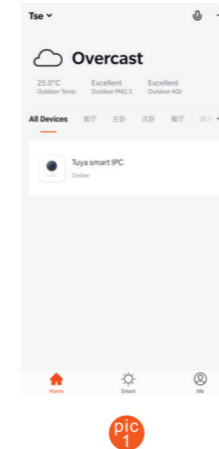
1. Download APP and install
  - A. Make sure your mobile device can connect to network
  - B. Tuya smart ip camera support "Tuya smart" and "Smart life" APP, you can find in APP store or scan QR code to download; for first time to use, please register first, please login if you already have account
  - C. Please note: "Tuya smart" and "Smart life" can not connect same device



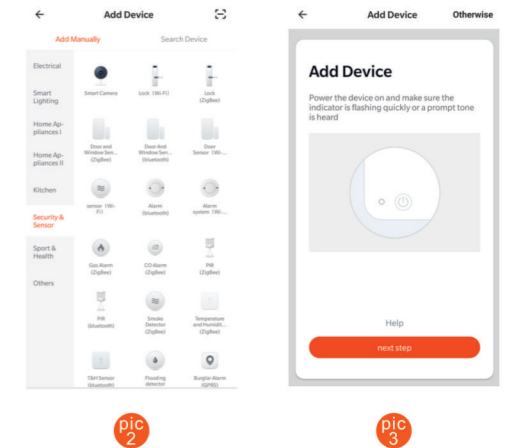
2. Check wireless network
 

Check DHCP function of router are ok, and under 2.4 GHz. (5GHz do not support)  
Make sure your smartphone are connected to network.
3. Connection setting
 

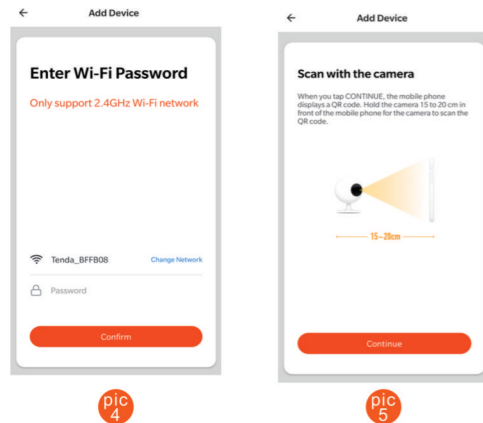
Step1: open Tuya smart APP home page, click "+" on upper right corner. (pic1)



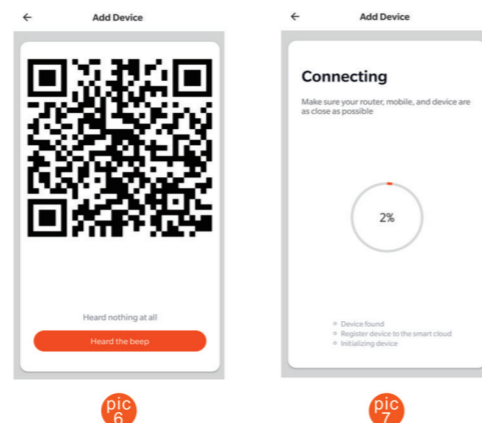
Step 2: on "security&sensor" page choose "smart camera". (pic2)



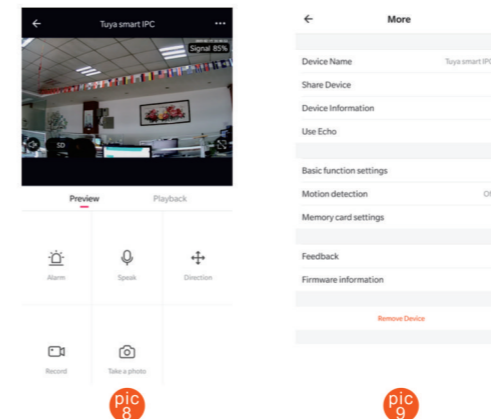
Step 3: on add device page, make sure the camera are power on and have prompt tone "Ding ding ding" are heard (pic3), Note: For some device do not have speaker, watch the blue light stay on means network configuration success if not heard, please press "Reset" about 8s to reboot device, then start again  
Step 4: Input password of your WIFI, click "confirm" (pic4), show scan with the camera, click "continue" (pic5) (Note: WIFI name and password do not support special character)



Step 5, show QR code target in front of camera about 20~30cm, heard "Ding" sound, click "heard the beep"; (pic6) showing connecting, connection success when process to 100% (pic7) (Note: for some device do not have speaker, watch the blue light stay on means network configuration success)



Step 6 you can remote view and set alarm, 2 way speak or playback (pic8); Click Upper right corner "... "can check device info and basic setting (pic9)



Thank you for choose our smart camera, hope you will have great experience with it; if you have any question or advise about it, welcome to give us feedback.

NOTE: This equipment has been tested and found to comply with the limits for a Class B digital device, pursuant to part 15 of the FCC Rules. These limits are

designed to provide reasonable protection against harmful interference in a residential installation. This equipment generates, uses and can radiate radio frequency energy and, if not installed and used in accordance with the instructions, may cause harmful interference to radio communications. However, there is no guarantee that interference will not occur in a particular installation. If this equipment does cause harmful interference to radio or television reception, which can be determined by turning the equipment off and on, the user is encouraged to try to correct the interference by one or more of the following measures:

- Reorient or relocate the receiving antenna.
  - Increase the separation between the equipment and receiver.
  - Connect the equipment into an outlet on a circuit different from that to which the receiver is connected.
  - Consult the dealer or an experienced radio/TV technician for help
- Changes or modifications not expressly approved by the party responsible for compliance could void the user's authority to operate the equipment. This device complies with Part 15 of the FCC Rules. Operation is subject to the following two conditions:
- (1) this device may not cause harmful interference, and (2) this device must accept any interference received, including interference that may cause undesired operation.

FCC RF Exposure Warning Statements:  
This equipment complies with FCC radiation exposure limits set forth for an uncontrolled environment. This equipment shall be installed and operated with minimum distance 20cm between the radiator & body.