

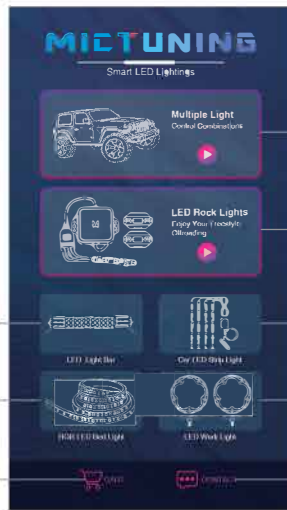
# APP Introduction

The MICTUNING APP supports BLE and SPP Bluetooth protocols. By connecting Bluetooth, you can easily control and customize mictuning's Smart LED Lighting products. Feature with RGBW multi-colors, create amazing atmosphere. Perfect for automotive and other uses.

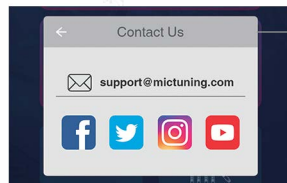
MICTUNING APP with multiple lighting modes including single color, jump, fade, music mode and more. DIY the color to fit for special occasions like off-road racing, car party and so on.



## Guide Page

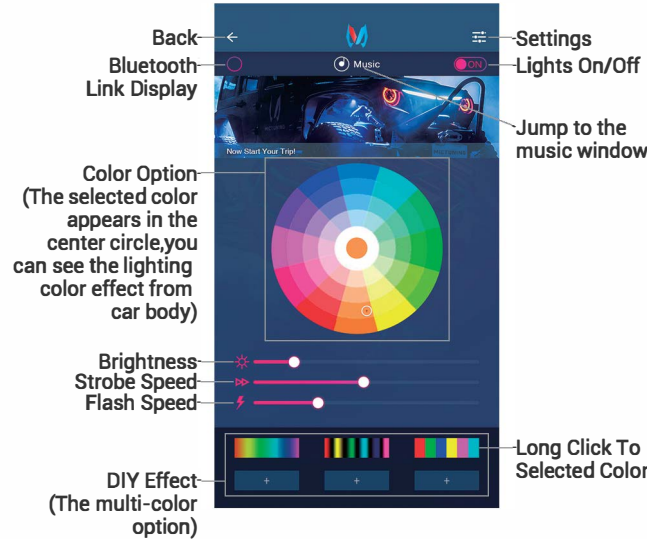


- Multiple Light Control Group
- LED Rock Light
- LED Light Bar
- LED Tailgate Light
- Car Interior Light
- LED Light Pods
- Contact

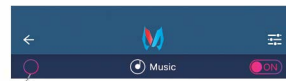


Contact Pop-up (Click on the social icon to go to the corresponding social software to contact)

## Home Page

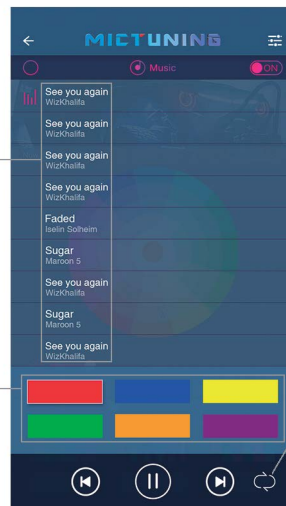


- Back
- Bluetooth Link Display
- Settings
- Lights On/Off
- Jump to the music window
- Color Option (The selected color appears in the center circle, you can see the lighting color effect from car body)
- Brightness
- Strobe Speed
- Flash Speed
- DIY Effect (The multi-color option)
- Long Click To Selected Color



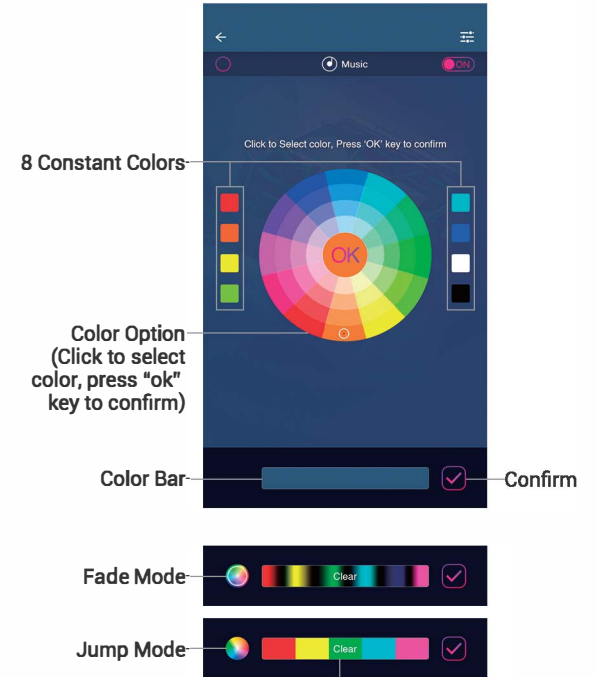
Mictuning will automatically connect when it's turned on, after successful connection at the initial use.

## Music Page



- Music downloaded to the phone will be searched
- Constant Single Color Option
- Sequence
- Random

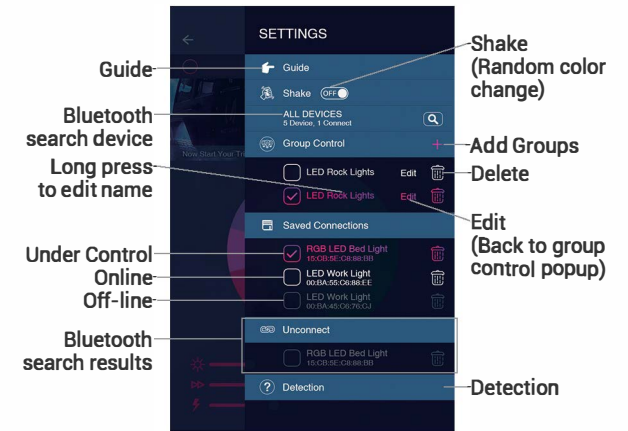
## DIY Page



- 8 Constant Colors
- Color Option (Click to select color, press "ok" key to confirm)
- Color Bar
- Confirm
- Fade Mode
- Jump Mode

Add up to 14 colors, click to clear selected color

## Settings Page



- Shake (Random color change)
- Guide
- Bluetooth search device
- Long press to edit name
- Add Groups
- Delete
- Edit (Back to group control popup)
- Under Control
- Online
- Off-line
- Bluetooth search results
- Detection

### ■ Modify Name Page



Page of group control modification

### ■ Group Page



Multiple single selections form a new group

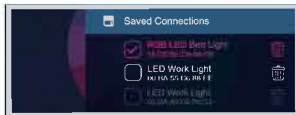
### ■ Detection Page



Check whether the RGBW color works normally.  
The interval between the light on & off is 1s, and it will continue to cycle without exiting the self-detection interface.

Pls note that whether the light color is consistent with the color indicated by the APP when detect.

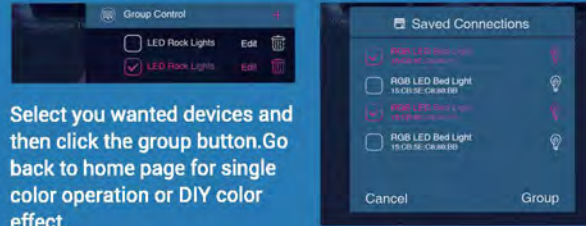
### ■ Single Set Control



After selecting the light set, go back to home page for single color operation or DIY color effect.



### ■ Multi Sets Control



Select you wanted devices and then click the group button.Go back to home page for single color operation or DIY color effect.

### Reasons for Bluetooth connection failure

Situation 1 :

The Bluetooth device signal cannot be searched in the APP

1. Check the line fuse to ensure correct installation. Under normal power-on conditions, the light will be on.
2. Be sure to search within 15 meters of the phone's wireless range(in an open environment).
3. Make sure that the Bluetooth device is not connected by other mobile phones. When the device is connected, other phones cannot search for the device signal.

Situation 2 :

The APP searched for Bluetooth signal but could not connect

1. The APP must be authorized, otherwise it cannot connect.
2. For some Android phones, the first time you connect to the device, it is necessary to turn on Bluetooth for pairing in the general Settings, and then you can connect normally.



Scan to download  
IOS APP



Scan to download  
Google APP



# Mictuning App Instruction



This device complies with part 15 of the FCC Rules. Operation is subject to the following two conditions: (1) this device may not cause harmful interference, and (2) this device must accept any interference received, including interference that may cause undesired operation.

Any changes or modifications not expressly approved by the party responsible for compliance could void the user's authority to operate the equipment.

NOTE: This equipment has been tested and found to comply with the limits for a Class B digital device, pursuant to Part 15 of the FCC Rules. These limits are designed to provide reasonable protection against harmful interference in a residential installation. This equipment generates, uses and can radiate radio frequency energy and, if not installed and used in accordance with the instructions, may cause harmful interference to radio communications.

However, there is no guarantee that interference will not occur in a particular installation.

If this equipment does cause harmful interference to radio or television reception, which can be determined by turning the equipment off and on, the user is encouraged to try to correct the interference by one or more of the following measures:

- Reorient or relocate the receiving antenna.
- Increase the separation between the equipment and receiver.
- Connect the equipment into an outlet on a circuit different from that to which the receiver is connected.
- Consult the dealer or an experienced radio/TV technician for help.

The device has been evaluated to meet general RF exposure requirement. The device can be used in portable exposure condition without restriction