

TOMLOV DIGITAL MICROSCOPE

EDM5



Instruction Manual

Please read this user manual carefully and keep it for future reference.
Should you encounter any problem, please contact us by the following e-mail.
Most technical questions can be answered through our knowledge base.

Customer service: support@tomlov.com

Contents

Read Me First	1
Packing List	2
Installation	3
Parts Description	4
Quick Start	5
Detailed Operation.....	6
1.Charge The Microscope Correctly	6
2.Snap Images	6
3.Record videos	7
4.Review Pictures And Videos	7
5.Connect The Microscope To Your Mobile Phone	8
6.Connect The Microscope To PC	10
7.Adjust The Fill Lights	11
8.Wired Remote	11
Specifications	12
FAQ	13

Read Me First

1. TOMLOV TM-DM5 Digital Microscope utilizes 18650 rechargeable lithium battery. It takes 2-3 hours to charge and works for 3-4 hours. Battery on the back of the monitor is replaceable.
2. The product contains tiny parts and is inedible, please avoid accidental ingestion by children. Also, this product is not intended for cell and medical use.
3. The images and videos will be saved on the micro SD card by default. With the microscope connected to a PC, the files will be saved on the computer hard drive.
4. The wired remote buttons are unavailable under PC-Microscope mode, you can save pictures and videos by your PC.
5. TOMLOV offers one year manufacture warranty and life-long technical support for TM-DM5 digital microscope. Please feel free to get in touch with us if you need any help about the unit. It is recommended to attach microscope photos or videos showing the problems in the e-mail/message for quick solutions. TOMLOV customer service usually responds in 12 hours on working days.

E-mail: support@tomlov.com /

Facebook: [@Tomlov](#)

WhatsApp: +86 18123716479

Packing List



Microscope



Base



Holder



Wired remote



USB cable



SD card

Please note: Accessories may be updated without prior notice, please refer to the actual receipt of the items.

Installation



1. Screw the holder on the base.



2. Put the microscope unit on the holder.



3. Fix the microscope.

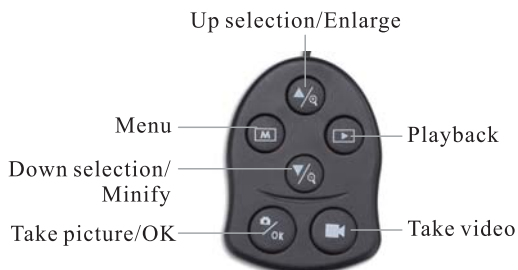


4. Attach the wired remote into the 3.5 mm jack.

Parts Description



Buttons Description



Quick Start



1. Insert the SD card.



2. Press the power button for 2 seconds to turn on the microscope.



3. Rotate the knob to adjust the height of the holder.



4. Rotate the knob to focus.



5. Rotate the controller to adjust the fill lights.



6. Press OK button to take pictures. Press the menu button for 2 seconds to switch the modes between **picture**, **video** and **playback**.

Detailed Operation

1.Charge The Microscope Correctly



(Insert the cable into the usb interface)

The microscope can be powered either by the built-in 18650 lithium battery or corded power. Charge the microscope by hooking it up to adapter with the included USB cable.

Blue indicator light: Working

Purple indicator light: Charging

Red indicator light: Out of power

2.Snap Images



The Microscope is by default under “Taking Picture” mode after powering on. Rotate the focus knob to get clear image. Press the **OK** button to capture pictures. The pictures will be saved in the inserted micro-SD card.

3.Record videos



Press the **MENU** button for 2 seconds to switch the video mode. Press **OK** button to start recording, press **OK** button again to quit. Videos will be saved in the inserted micro-SD card.

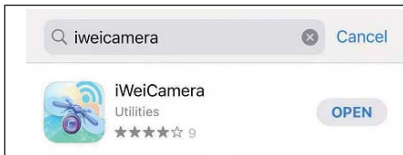
4.Review Pictures And Videos



Under the default photo mode, press the **MENU** button for 2 seconds to switch the modes from photo mode to playback mode. You can review the saved pictures and videos. Press the left or right arrow button to review more files.

5. Connect The Microscope To Your Mobile Phone

①Download the app **iWei Camera** from App Store or Google play.

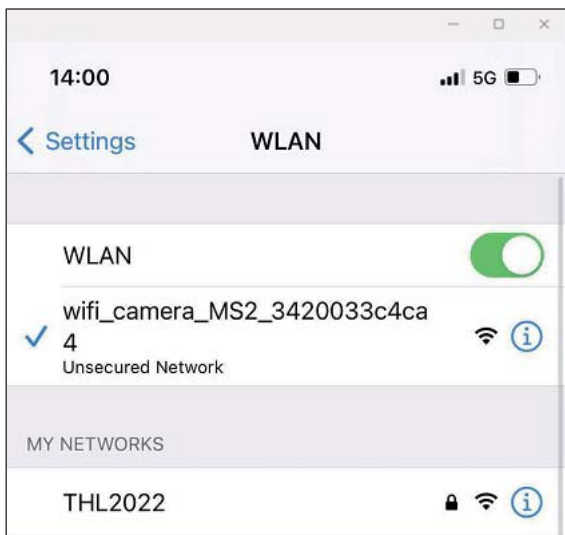


②Turn on the microscope by pressing the power button for 2 seconds.

③Press the power button and the WiFi activated.



③Use you phone connect to the WiFi. The WiFi name is “*wifi_camera_MS2_****”Please note that the network is unavailable when your phone is connecting to microscope.



④Run the App *iWeiCamera* where you can obtain real time view from the microscope. The App allows you to snap pictures and record videos. Files will be saved in your phone.

6.Connect The Microscope To PC

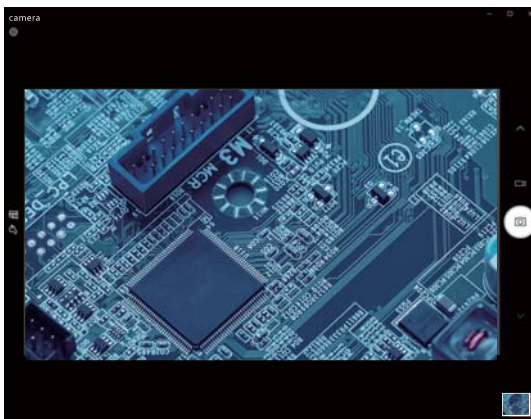
Windows System

Please make sure your PC installed “**Windows Camera**”. If not, get the App from Microsoft Store.

- ①Turn on the microscope and connect the microscope to your PC with the USB cable.
- ②The microscope shows three menu “Memory, PC camera and Video mode”, select PC camera and press OK button.



- ③Run the App Windows Camera on your PC. Now you can take photo and record video from the microscope and save files on your PC.



Mac OS System

Please make sure your Mac installed “**Photo Booth**”. If not, get the App from App Store.

- ① Turn on the microscope and connect the microscope to your PC with the USB cable. You may need a usb hub as the usb cable is micro 2.0.
- ② Turn on the microscope and connect the microscope to your PC with the USB cable.
- ③ Run “**Photo Booth**”(Finder - Application - Photo Booth) and choose device “USB PHY 2.0” on the menu bar.
- ④ Now you can take photo and record video from the microscope and save files on your PC.

7.Adjust The Fill Lights

Rotate the dial on the right of the microscope panel to adjust the fill lights.



8.Wired Remote

Connect the wired remote to the 3.5mm jack interface. Now you can control the microscope menu by the remote.

Specification

	Parameter
Model	EDM5
The biggest pixel	1080FHD/12MP
Lens Optical Size	1/4"
Photo Resolution	3M(2048*1536) 2M(1920*1080) 1M(1280*720)
Video Resolution	1920*1080
Video Format	MOV
Focusing Mode	Manual Operation
Picture Format	JPG
Magnification	50/1000X
Light Source	LED
Focusing Range	10~75mm
PC Resolution Image Transfer Rate	640*480/26fps 1280*720/26fps
White Balance	Automatic
Exposure	Automatic
PC Operating System	Windows XP, Windows 7, Windows 8.1, Windows 10, Mac OS 10.5 or higher
Support Language	12 languages
Lens Structure	2G+IR
Aperture	F4.5
Operating Temp	-4°F-140°F
Compatible App	Android 5.0 or higher. iOS 8.0 or higher
WiFi Standard	IEEE 802.11b/g/n
Battery Lasting Time	3-4 hours

FAQ

1. Why can't I get clear pictures?

Make sure that the LED lights work properly. Adjust the light to illuminate the object, adjust the object distance by using the knob on the holder, and then rotate the focus controller. If you still cannot obtain a clear image, gently wipe the lens with a clean, dry cotton cloth or paper towel to ensure that the lens is clean.

2. How to reset the microscope?

Press the reset hole on the right side of the microscope panel.

3. Does other micro USB charger work with the microscope?

Yes, other micro USB cable works with the scope, too.

4. What should I do if the microscope shows “low battery”?

Charge the microscope with the USB cable. If still “low battery”, take out the battery and connect the microscope to power with USB cable and turn it on. The battery might be damaged if the microscope works normally without battery. Contact Tomlov support about the issue.

This user's manual has been subjected to thorough reviews and verification to ensure accuracy of its content and contains information that's pertinent to the model and series it describes at the time of publication. However, content of this manual and/or product specifications are subject to change without prior notice and with no direct or indirect liability on TOMLOV Electronics' part concerning such change.

Copyright and registered trademark

TOMLOV, Tomlov are registered trademarks.

Mail Box: support@tomlov.com



@Tomlov

WhatsApp: +86 18123716479

Monday – Friday

9:00AM CST – 6:00PM CST

www.tomlov.com

This device complies with part 15 of the FCC Rules. Operation is subject to the following two conditions: (1) this device may not cause harmful interference, and (2) this device must accept any interference received, including interference that may cause undesired operation.

Any changes or modifications not expressly approved by the party responsible for compliance could void the user's authority to operate the equipment.

NOTE: This equipment has been tested and found to comply with the limits for a Class B digital device, pursuant to Part 15 of the FCC Rules. These limits are designed to provide reasonable protection against harmful interference in a residential installation. This equipment generates, uses and can radiate radio frequency energy and, if not installed and used in accordance with the instructions, may cause harmful interference to radio communications.

However, there is no guarantee that interference will not occur in a particular installation.

If this equipment does cause harmful interference to radio or television reception, which can be determined by turning the equipment off and on, the user is encouraged to try to correct the interference by one or more of the following measures:

- Reorient or relocate the receiving antenna.
- Increase the separation between the equipment and receiver.
- Connect the equipment into an outlet on a circuit different from that to which the receiver is connected.
- Consult the dealer or an experienced radio/TV technician for help.

The device has been evaluated to meet general RF exposure requirement. The device can be used in portable exposure condition without restriction