

- **Normal Module Wiggle antenna specification**

Model: Wiggle antenna

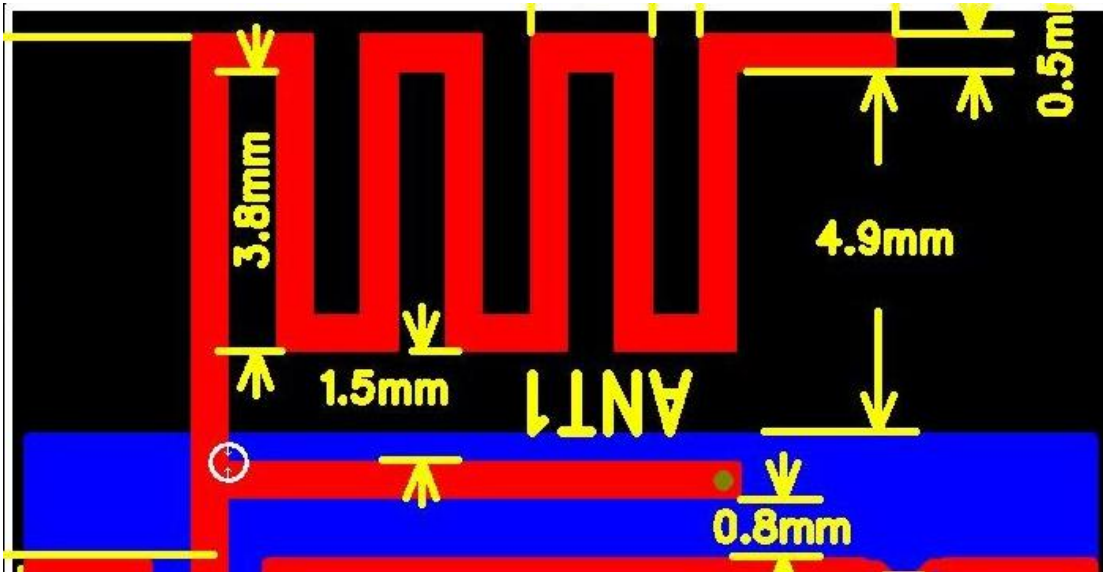
Type: PCB printed antenna

Frequency range: 2402~2480MHz

Manufacturer: Shenzheng Zhongxin Sheng Technology Co.,LTD

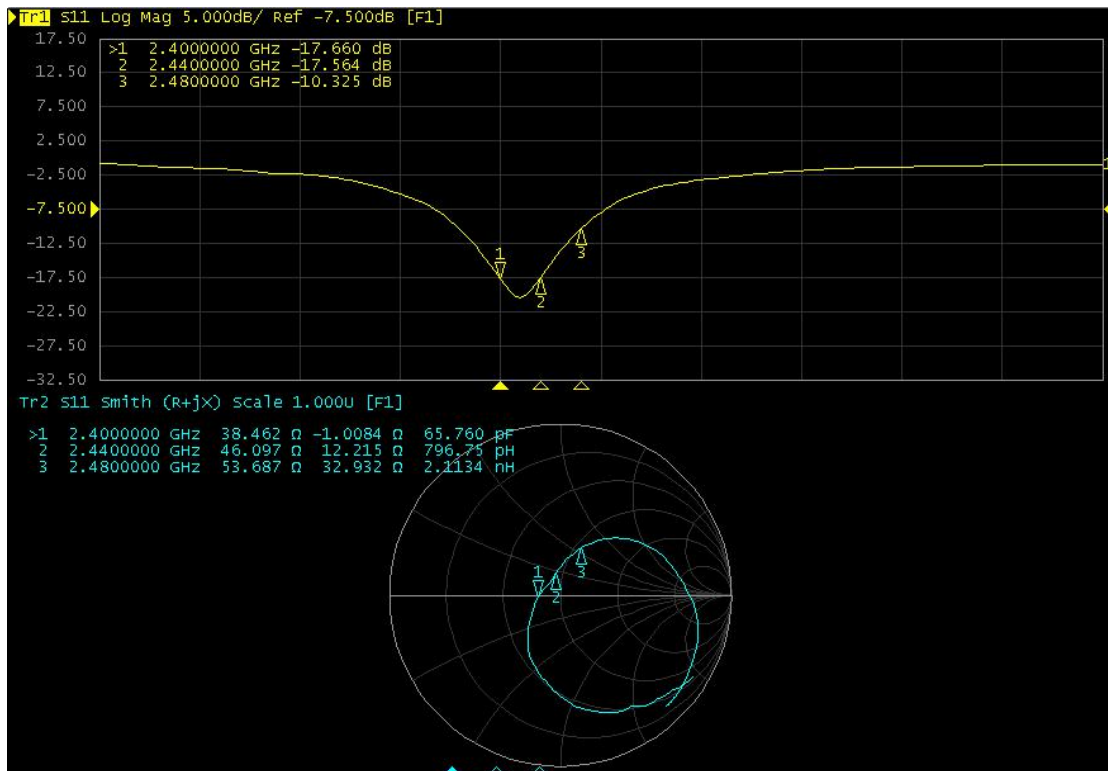
Address: 3F, Block B, Building C1, Huafeng Second Industrial Park, Xixiang Air Road, Baoan District, Shenzhen

This Wiggle antenna is used in normal module with whole layout board which size is 13mm*18mm and thickness is 1.0mm (FR4)



1 Normal Module Wiggle Antenna

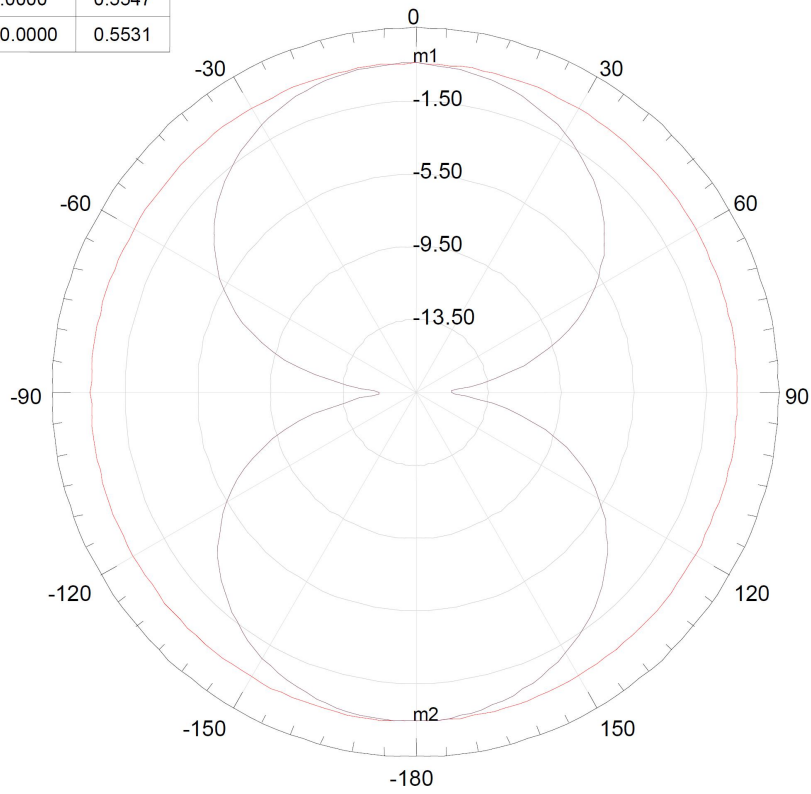
The performance of S11 as blow show and the working frequency band cover 2.4G ISM .



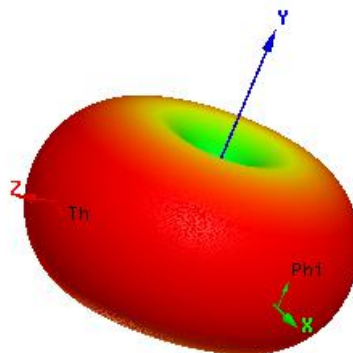
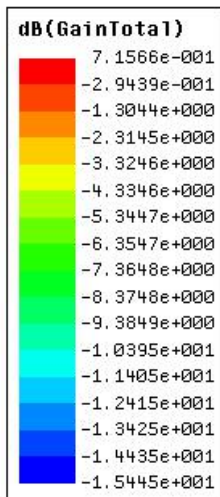
2 Normal Module Wiggle S11 performance

The gain of this antenna 2D and 3D as blow show and the maximum gain is about 1.5dB.

Name	Theta	Ang	Mag
m1	0.0000	0.0000	0.5547
m2	180.0000	180.0000	0.5531



Curve Info	
—	dB(GainTotal)
Setup1 : Sweep1	Phi='0deg'
—	dB(GainTotal)
Setup1 : Sweep1	Phi='90deg'



3 Normal Module Wiggle gain