

RGBIC LED TV BACKLIGHT KIT

Install & User Manual



WARM TIPS:

- 1. Please check whether the device is connected with power and your phone is connected with Wi-Fi.
- 2. Check routers: If the router is dual-band router, Please select a 2.4GHz network to add device. You also need to open the router broadcasting function.
- 3. Be careful of static electricity during installation and use, and keep the product away from sharp objects and harmful chemicals.
- 4. Avoid folding the LED components when installing, as it may effect the life of product.
- 5. Ensure that the surface of the installation is free of nails, metal or other conductive materials to prevent short circuit.
- 6. Please keep the product away from open flames and keep away from water to avoid damage.
- 7. Please keep out of reach of children. Children may use it under adult supervision.
- 8. Please use the product in line with instructions and cut off power supply if a hazard occur.
- 9. Do not install with heat sources nearby.

INTRODUCTION

The RGBIC LED TV Backlight Kit brings an extremely dynamic and immersive TV watching/gaming experience. The camera positioned in the center of your TV can intelligently capture the colors displayed. This significantly enriched your gaming worlds or movie nights.

SPECIFICATIONS

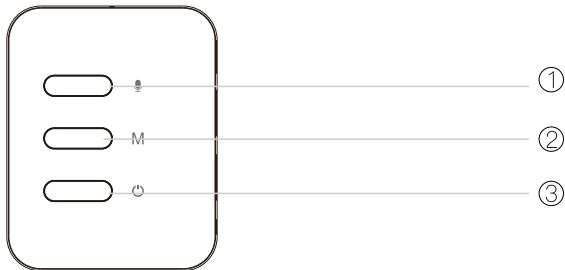
Power Input	12V 2A
Lighting Color	RGB
Control Method	App +Manual Control+ Voice control
Wireless Type	WiFi 2.4GHz
Camera data cable	Type-C
Data Cable Length	60cm
Timing	Flexible timing
Music Response	Support
Height for Light Bars	46.3cm
Length for TV LED Backlights	12.5ft / 3.8m
Product Warranty	1 Year

PACKAGE INCLUDE

Light Strip * 1 Camera * 1 Fiber Cloth*1
Light Bars*2 Ruler * 1 Angle Card*1
Adapter * 1 Use Manual * 1 Fastening Buckle*6
Control Box * 1

BEFORE USE

Please understand the functions of each button of the control box.

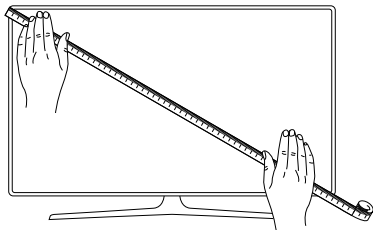


- ① Sound switch button: Press to turn on/off sound control function. When turned on, the lighting effects will change with the sounds of TV
- ② Scene Button: Press to switch scene mode.
- ③ Switch Button: Press to turn on/off. Press and hold to enter the distribution network mode.

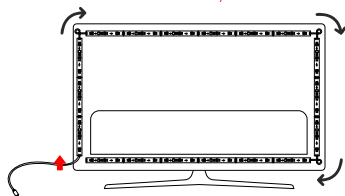
INSTALLING STEPS

Please note :the position of the light strip and camera will affect the lighting effects.

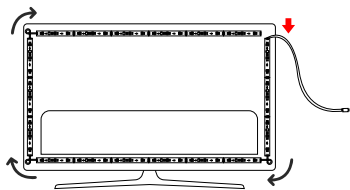
1. Wipe the back of the TV with the included dry towel to keep it clean and dry.
2. Measure the size of the TV to ensure it is the suitable size.



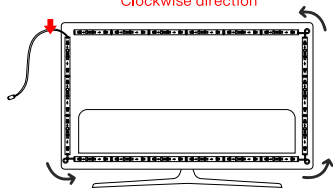
3.Face the back of the TV and choose one of the following installation directions. (clockwise installation is recommended)



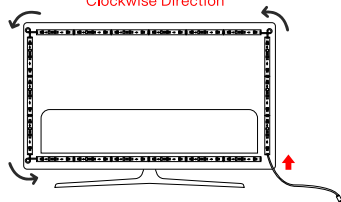
Lower Left
Clockwise direction



Top Right
Clockwise Direction



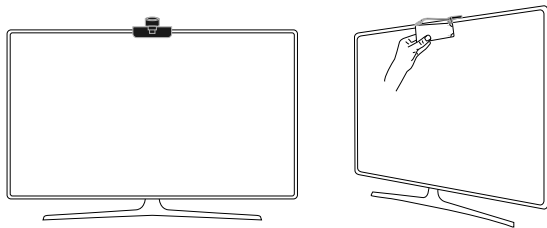
Top Left
Counterclockwise



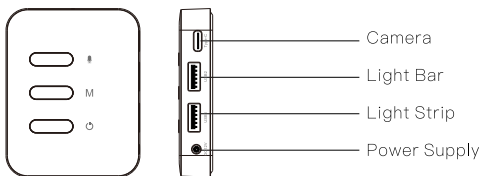
Bottom Right
Counterclockwise

4.Use the ruler to measure the position of the top center of the TV and install the camera. Then, according to the

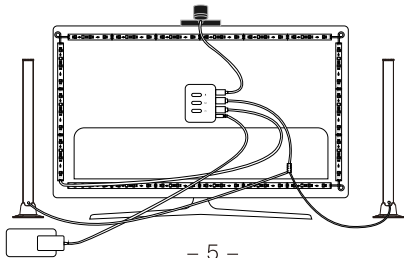
reference value of the angle card to slightly adjust the camera angle (The narrow side faces inward against the middle of the camera) to ensure that the best capture effect.



5. Insert the cable of the light strip, light bar, the camera and power into the control box.





6. Install the control box in a proper position, then power the strip light and light bars.



CONTROLLING BY APP

How to connect to Wi-Fi network?

1. Download Smart Life from  or  .

Download or scan the QR code and install the Smart Life App for either iOS or Android. Once downloaded, the app will ask you to register your device. Enter your phone number or email which one you convenient and select the country you live in. If use phone you will receive a text with a registration code. If you choose email you will need to create a password.

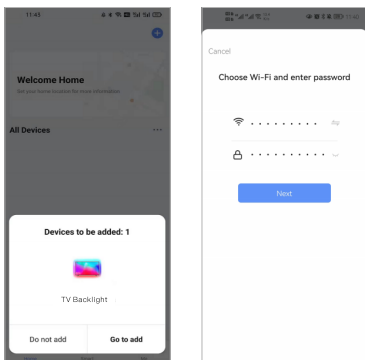


Please note: There are two mode configurations (Bluetooth Mode/Quick Mode) available for you to choose from to add the device to the app. Bluetooth Mode is recommended (Need to turn on your phone's Wi-Fi, Bluetooth, GPS first).

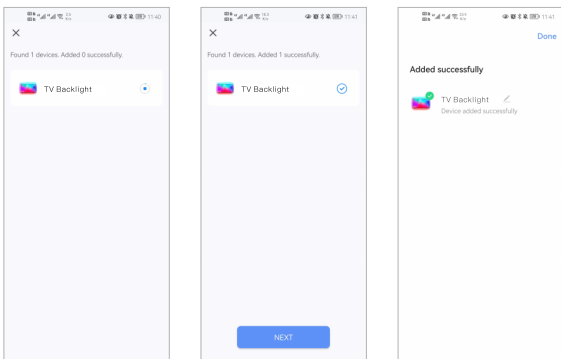
Bluetooth Mode Configuration (Common)

1. Turn on your phone's Bluetooth after the RGBIC LED TV Backlight Kit is powered on, wait for 3–5s, the red light blinks rapidly (If it's not flash mode, press the Control Box Switch Button for 6–10s). Enter the add device interface. It automatically says "Devices to be added".

then press “Go to add”. (If the devices can’t appear automatically, then you need to add manually).



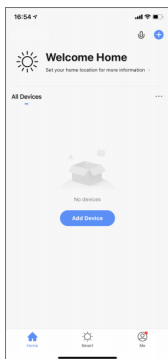
2. Enter your Wi-Fi Password and press “Next” to add advice. Once connected, the App will prompt the to connect press “Done”.



Quick Mode Configuration

1. Make sure quick mode configuration is initiated: The indicator light blinks red rapidly (twice per second). If it blinks red slowly (once every 3 seconds), Press and hold the Switch Button on the control box for 6–10 seconds.

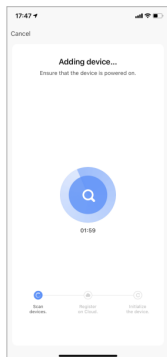
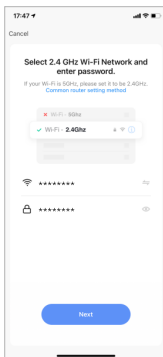
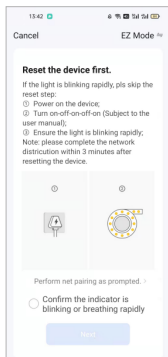
2. Tap the icon “+” on the top right, choose any device type and enter into “Add Manually”.



Please remember to choose the fast blinking.

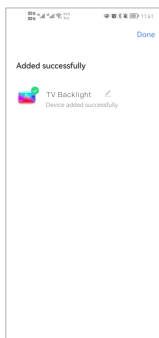
3. Follow up the In-app instruction to connect the RGBIC LED TV Backlight Kit to your Wi-Fi network.

4. Enter your Wi-Fi Password and press “Next” to add device. Once connected, the red light will turn from blinking to solid.

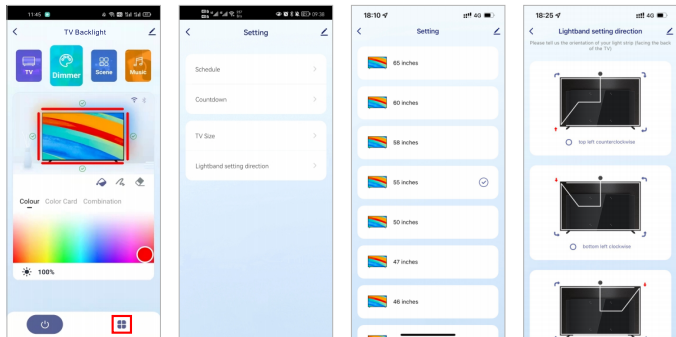


5. Once connection finished, the APP will prompt you to press “Done”.

6. Now you can skip control RGBIC LED TV Backlight Kit through Smart Life APP, and the device will be added to the “Device List”.



The installation direction that matches the light strip. After connecting the Smart Life app, please press the setting key in the lower right corner to select the corresponding TV size and choose the installation direction corresponding to the light strip. Once completed, you can start the immersive TV trip.



How to connect RGBIC LED TV Backlight Kit to Amazon Alexa?

1. Complete product networking configuration in the Smart Life App:

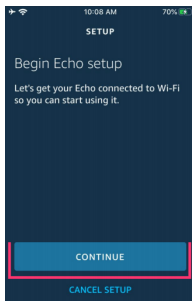
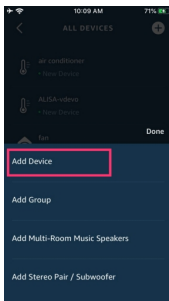
Complete the device's networking configuration according to the prompts in the App.

Note: In the App, change the name of the device to an easily identifiable name such as Alexa; names are usually in English, such as "TV Backlight".

2. Configure the Amazon Echo device (If you have already configured Amazon Echo, you can skip this step. The following instructions are based on the iOS client).

- Make sure your Amazon Echo device is powered on and connected to a Wi-Fi network.
- Open the Alexa app on your phone. After successful login, tap on the menu in the upper left corner of the Home page, select “Settings” and tap “Set Up A New Device” to set up the Amazon Echo.

Choose your Amazon Echo device type and language for connecting. Press and hold the small dot on the device until the light turns yellow. Then tap “Continue” to connect to the hotspot.



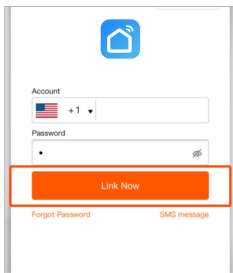
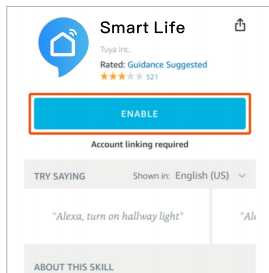
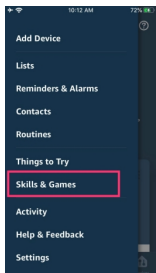
After connecting to the Amazon Echo hotspot, return to the page. At this point, the connection is successful. Tap “Continue” to proceed to the next step. Choose a Wi-Fi network to connect to. Amazon Echo will take a few minutes to try to connect to the network.



- After the network connection is successful, Tap “Continue.” An introduction video will appear. After the video ends, Tap “Continue” to jump to the Alexa Home page. You have now completed the Amazon Echo’s configuration process.


3. Key step – link Skill.

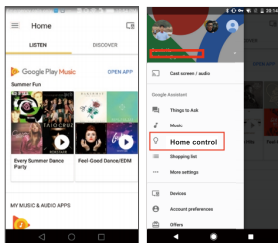
- Tap on “Skills” in the Alexa app menu.
- Then search for “Smart Life”. Tap “Enable” to enable the Skill.
- Enter the Smart Life APP account and password, then tap “Link Now” to link your Smart Life account to enable the Skill. Now you can start your smart home journey.



How to connect RGBIC LED TV Backlight Kit to Google Home?

1. Launch the Google Home App and make sure Google Home speaker is installed. If not, please follow Google Home speaker installation instruction to complete the installation.

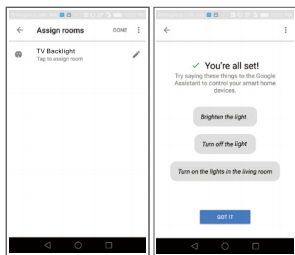
2. Once Google Home is installed, in the upper left corner of App Home page, Pressing  button to show App menu. Then press “Home Control” in the menu.



3. After successfully linking your account, in the Google Home App you can see all your smart devices from your Smart Life App account . You can assign rooms for each device.

4. Now you can use Google Home to control your smart device, you can say like.

Ok Google, turn on/off TV Backlight
Ok Google, set TV Backlight to red



FAQ

1. Why does my light turn on by itself?

Please check in the following ways:

---Please first check if you have scheduled / automated / countdown tasks set for the device, if any, suggest you delete the tasks instead.

---Check whether the device is shared with others, which may be caused by the operation of others.

---If there is a power outage in the home, some devices will be turned on automatically after the power is completely turned off and turned on again.

---If there is no such situation, please restore the device to factory settings in the App. In this way, the device will remove and delete all device-related information from the App's device list, then you can re-configure the device.

---There is a problem with the firmware of this device, please contact our staff to push the latest firmware for you.

---The power supply voltage of the device is unstable, which causes the networking module of the device reset frequently. Please check whether the power supply of the device is stable.

---If the device still turns on/off by itself after excluding all the above conditions, it should be a problem with the hardware of the device. Please contact the after-sales person of the device for after-sales.

2. Why the color of the light does not match the color of the TV screen?

---Please check whether the installation direction is the same as the direction set on the app.

3.How to connect a smart light strip to multiple mobile app?

---You can enter the App, click "Profile"—"Device Sharing" to share device to others. (The other person must also have an App account)

4.How to make light change color via Alexa?

---Please check whether your device can change color via our App. As normal, the light can change color with sound. After you have linked the light to alexa, if there is music, the color can change with the music.

Thanks for your support.

5.Why is it that when I control the brightness of the light, I adjust the brightness below 25% and the light turns off?

---Dear user, we are sorry for your inconvenience. This is because the lowest value of brightness defined by most of Lamps is 25%. So when you adjust the brightness of the lamp below 25%, the lamp will turn off (some lamps can support lowering the brightness below 25%, but the lamp will flickering, and it will cause irreversible damage to the lamp itself).

FCC Warning

This device complies with part 15 of the FCC rules. Operation is subject to the following two conditions: (1) this device may not cause harmful interference, and (2) this device must accept any interference received, including interference that may cause undesired operation.

Changes or modifications not expressly approved by the party responsible for compliance could void the user's authority to operate the equipment.

NOTE: This equipment has been tested and found to comply with the limits for a Class B digital device, pursuant to part 15 of the FCC Rules. These limits are designed to provide reasonable protection against harmful interference in a residential installation. This equipment generates uses and can radiate radio frequency energy and, if not installed and used in accordance with the instructions, may cause harmful interference to radio communications. However, there is no guarantee that interference will not occur in a particular installation. If this equipment does cause harmful interference to radio or television reception, which can be determined by turning the equipment off and on, the user is encouraged to try to correct the interference by one or more of the following measures:

- Reorient or relocate the receiving antenna.
- Increase the separation between the equipment and receiver.
- Connect the equipment into an outlet on a circuit different from that to which the receiver is connected.
- Consult the dealer or an experienced radio/TV technician for help.

Radiation Exposure Statement

This equipment complies with FCC radiation exposure limits set forth for an uncontrolled environment. This equipment should be installed and operated with minimum distance 20cm between the radiator and your body.