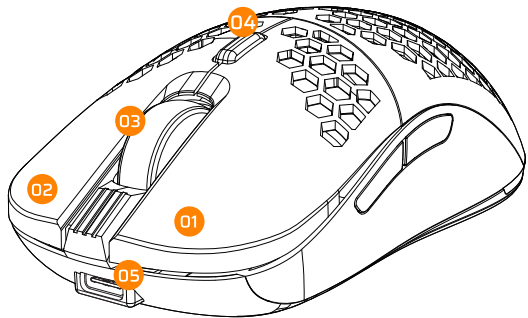


01

KEY MAP

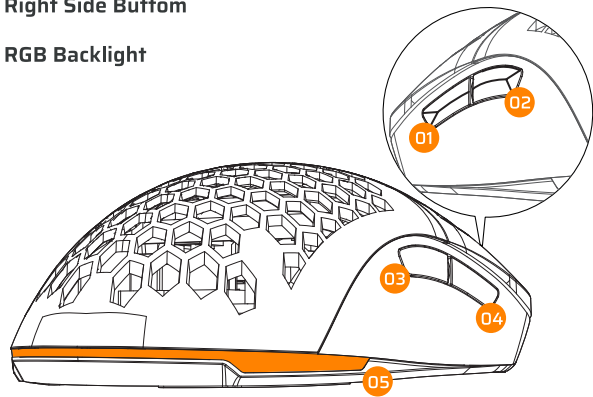
- 01 Left Button
- 02 Right Button
- 03 Scroll Wheel
- 04 DPI Switch
- 05 USB Connector



02

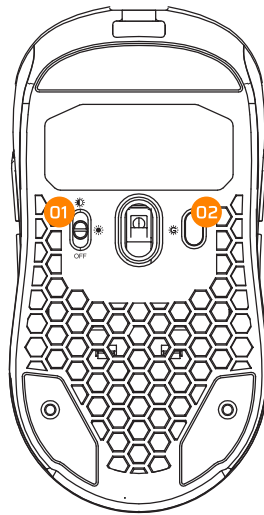
KEY MAP

- 01 Left Side Button
- 02 Left Side Button
- 03 Right Side Button
- 04 Right Side Button
- 05 RGB Backlight



03

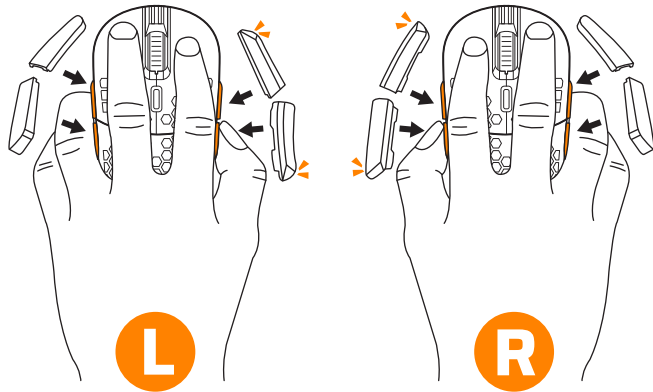
KEY MAP



- 01 Power Switch
- 02 Backlight Mode Switch

04

LEFT HAND USING
& RIGHT HAND USING



FCC Warning

This device complies with part 15 of the FCC Rules. Operation is subject to the following two conditions:

(1) This device may not cause harmful interference, and (2) this device must accept any interference received, including interference that may cause undesired operation.

Any Changes or modifications not expressly approved by the party responsible for compliance could void the user's authority to operate the equipment.

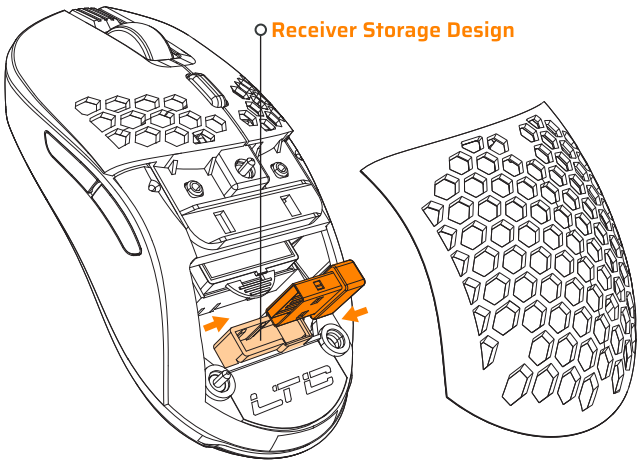
Note:

This equipment has been tested and found to comply with the limits for a Class B digital device, pursuant to part 15 of the FCC Rules. These limits are designed to provide reasonable protection against harmful interference in a residential installation. This equipment generates uses and can radiate radio frequency energy and, if not installed and used in accordance with the instructions, may cause harmful interference to radio communications. However, there is no guarantee that interference will not occur in a particular installation. If this equipment does cause harmful interference to radio or television reception, which can be determined by turning the equipment off and on, the user is encouraged to try to correct the interference by one or more of the following measures:

- Reorient or relocate the receiving antenna.
 - Increase the separation between the equipment and receiver.
 - Connect the equipment into an outlet on a circuit different from that to which the receiver is connected.
 - Consult the dealer or an experienced radio/TV technician for help.
- The device has been evaluated to meet general RF exposure requirement. The device can be used in portable exposure condition without restriction.

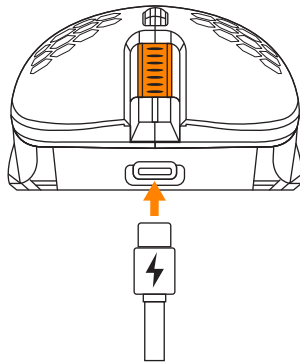
05

USING THE USB WIRELESS
RECEIVER COMPARTMENT



06

CHARGING



Need to Charge



Charging

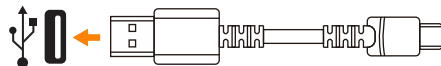
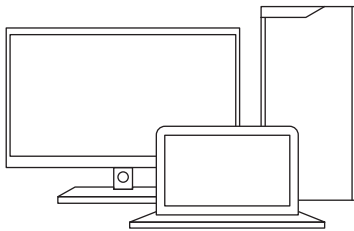


Charging Complete

For a better experience, please fully charge the headset before first use.

07

CONNECTIONS



Wired Connection or Charging with a Type-C Cable



Wireless Connection with an USB Receiver

08

SUPPORT & SERVICES



60-DAY
money-back guarantee for any reason



12-MONTH
warranty for quality-related issues

If you have any questions, please feel free to contact us via business@ltcofficial.com

We are looking forward to your feedback and hope you enjoy your LTC Product!

LTC

USER MANUAL

Mosh Pit WHM-01