

HHOLOVE iPet Smart Feeder Wi-Fi Plus

Quick Operating Manual

Please read this quick operating manual carefully before using the product



Scan QR code to download the App

WiFi Edition Smart Pet Feeder

App Detailed Operating Procedure

-
- 01 Download Smart Life app. Register an account and log on.
 - 02 Turn on Bluetooth and authorize your device, then enter the interface, wait for device to be detected, and click "Go to add"
 - 03 Input your WiFi password
 - 04 Wait for the finish of network connection.

Key Functions

Status indicator lights / buttons

- Green Light
 - Light flashing: Enter the Wi-Fi connection state.
 - Light stable: Successful Wi-Fi connection.

- FEED
 - (1) Press the feeding button 2 times: Manual delivery of food for 1 meal.
 - (2) Press the feeding button 5 times: Turn off the indicator light manually.
 - (3) Press the feeding button for 5 seconds: Restore to the factory mode of the device or reset the Wi-Fi.

DC 5V interface

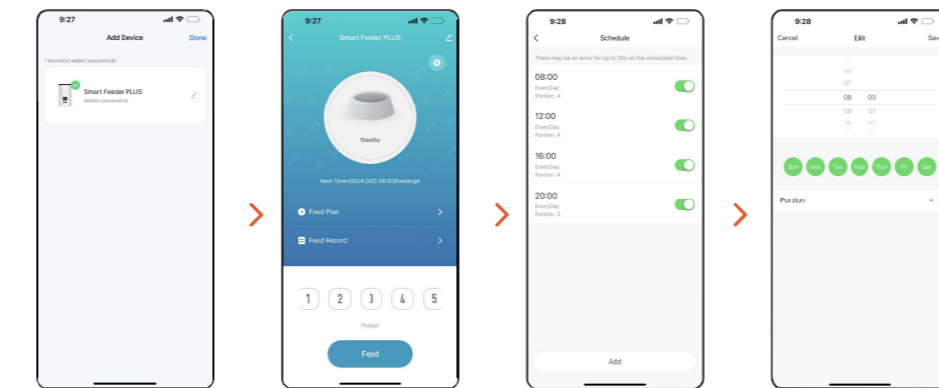
Please use the DC 5V power supply adapter provided.

How to open/close the food bucket cover

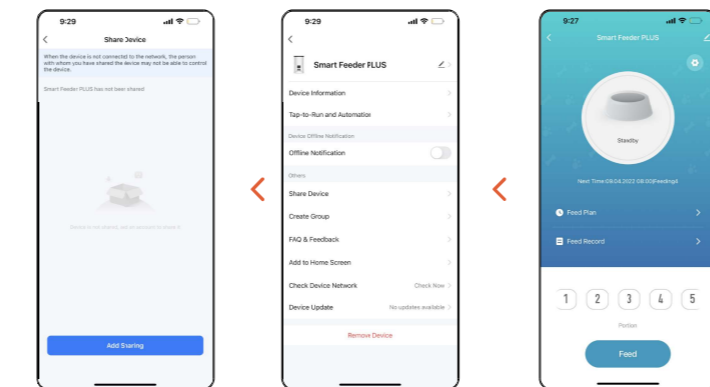
The square cover is fastened with snap hooks, you can push the "PRESS" mark on both sides of the cover at the same time and push them inward to open the cover. The circular cover features a rotating design, you can rotate to the right, up to the anchor point, then push upwards to open it.

Food bucket cleaning

Attention! The feeder contains electrical components! Do not use water to rinse it directly, please use a damp towel instead.



- 05 The device has been added successfully, now go to the next step
- 06 Select the number of portions based on your specific requirements and click "Feed" to start feeding your pet.
- 07 Click the "Meal Plan" to add a timed feeding plan.
- 08 The feeding time and number of portions can be set based on your pet's diet; you can also select from Monday to Sunday in the daily settings, and then click "Save".



- 09 Device-sharing steps: enter the main interface, click the setting icon in the upper right corner to enter the settings.
- 10 Enter the settings page and click "Share Device"
- 11 Click "Add Sharing" to share the device with all your family members who also have the app account.

Bottom battery box

3 D-size batteries can be put into the battery box to provide a back-up power supply. (When powered by the battery, the device can only provide the automatic timed feeding function set in the App; other functions are unavailable.)

Battery usage instructions

1. Please use 3 D-size alkaline batteries for the power supply.
2. Please refer to the marks for positive and negative poles for correct battery installation.
3. When battery power is low, please change the batteries after turning off the feeder's power supply.
4. Please remember to remove any batteries out if you intend to dispose of the feeder.
5. The feeder's power supply must be switched off when taking out the batteries.
6. Please dispose of any waste or old batteries at a designated storage location in accordance with relevant national regulations.
7. Please take the batteries out if you do not use the feeder for a long period of time. If there is any battery leakage, please clean out the battery box immediately and dispose of the leaking battery at a designated storage location.

How to install the food tray

There are two connection holes inside the food tray - you only need to insert the joint pins at the bottom of the device into the connection holes to complete installation.

Pet Feeder - Basic Troubleshooting

- 01 If encountering any network connection failure, please make the following checks:
 - a. WiFi name and password must not exceed 12 digits or letters. A combination of numbers and letters is recommended. This device does not support 5G WiFi, please use 2.4G WiFi signals only.
 - b. Some software conflicts within your cell phone may also cause a connection failure. Please reboot your phone if encountering this situation, then turn off any non-system software that starts automatically when rebooting, turn on Bluetooth and location service, then try to reconnect with the feeder.

- 02 Inaccurate feeding volume or no feeding: first check whether there is too much food on the food tray and whether the food channel has been obstructed. If so, clean the food outlet and channel. When using batteries for the power supply, check whether there is sufficient power and whether any battery leakage has occurred.

- 03 Feeder is offline: please check whether the distance between the feeder and your router is too great. Please make sure it does not exceed 10 meters, and there should be no partition wall between them. The nature of WiFi means that a partition wall can decrease signal strength dramatically, and further result in an unstable connection or equipment appearing offline.

- 04 No response after start-up: first check whether the power supply is connected and whether the power switch has been turned on. If there is no problem there, please check whether the power supply has been damaged, feel free to contact our customer service. We will get back to you within 24 hours.

- ### Packing List
- After opening the packaging, please confirm whether the feeder is intact, and check whether the following items are all present and complete according to the packing list:
 1x Pet feeder, 1x Power cable, 1x Quick operating manual

Product Installation Instructions

Product installation

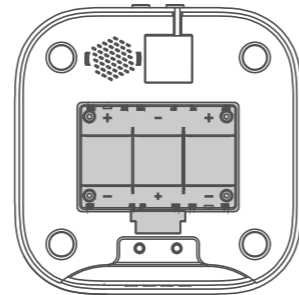
1、 Install the backup battery

- (1) Open the backup battery compartment at the bottom of the feeder.
- (2) Place 3 units of No. 1 batteries into it as backup power supply.
- (3) When the main power supply is cut off, it will automatically switch to the backup power supply.

⚠ Note: This is the emergency power supply in case of power failure. You can skip it if you don't need it.

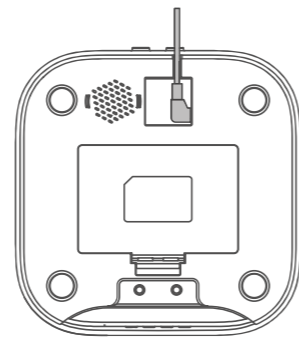
* Please ensure that there is no grain in the tank before installing the battery.

* You can install it after you turn the tank upside down.



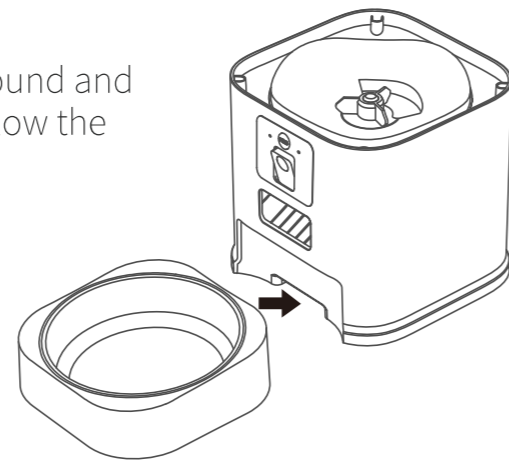
2、 Install the power cord

Plug the USB power cord into the bottom power cord slot.



3、 Install the food tray

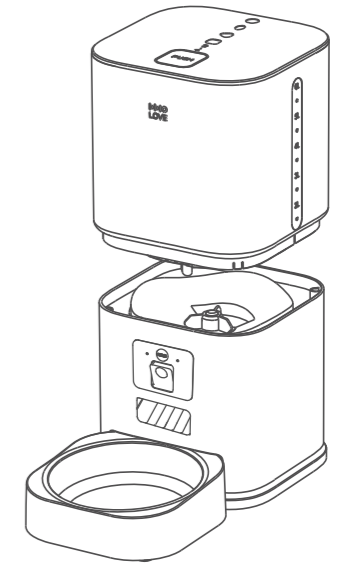
Place the feeder horizontally on the ground and install the bowl at the contact point below the food outlet.



4、 Install the food tank

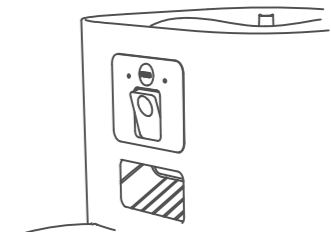
Remove the inverted food tank, and insert it into the host connection of the main engine completely, from top to bottom.

* Observe the direction of the installation when installing the food storage bucket, the front side displays the LOGO side.



5、 Flip the camera

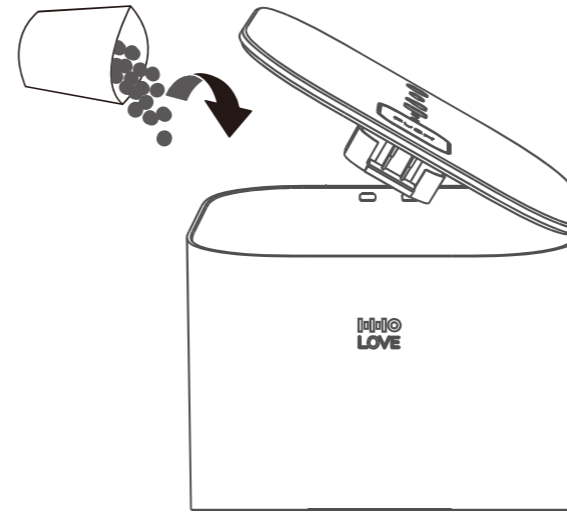
Manually press the bottom area of the camera, and flip it to the end.



Product use

1、 Open the lid and fill in the food

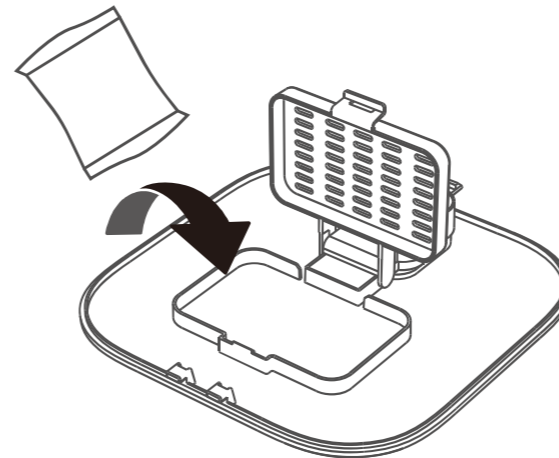
Open the top cover and add the pet food.



2、 Add desiccant bag

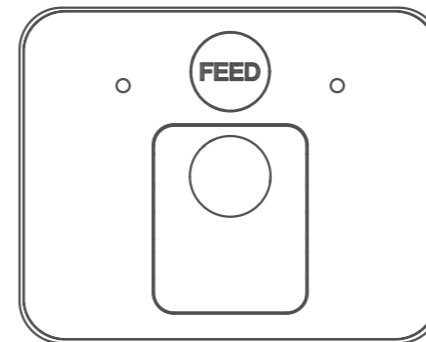
Open the top cover of the desiccant box, and put the desiccant bag into it, then fasten the box cover.

* The regular replacement of desiccant is recommended.



3、 Button

- (1) Press the feeding button 2 times: Manual delivery of food for 1 meal.
- (2) Press the feeding button 5 times: Turn off the indicator light manually.
- (3) Press the feeding button for 5 seconds: Restore to the factory mode of the device or reset the Wi-Fi.



FCC WARNING

This device complies with part 15 of the FCC Rules. Operation is subject to the following two conditions: (1) this device may not cause harmful interference, and (2) this device must accept any interference received, including interference that may cause undesired operation.

Any changes or modifications not expressly approved by the party responsible for compliance could void the user's authority to operate the equipment.

NOTE: This equipment has been tested and found to comply with the limits for a Class B digital device, pursuant to Part 15 of the FCC Rules. These limits are designed to provide reasonable protection against harmful interference in a residential installation. This equipment generates, uses and can radiate radio frequency energy and, if not installed and used in accordance with the instructions, may cause harmful interference to radio communications. However, there is no guarantee that interference will not occur in a particular installation.

If this equipment does cause harmful interference to radio or television reception, which can be determined by turning the equipment off and on, the user is encouraged to try to correct the interference by one or more of the following measures:

- Reorient or relocate the receiving antenna.
- Increase the separation between the equipment and receiver.
- Connect the equipment into an outlet on a circuit different from that to which the receiver is connected.
- Consult the dealer or an experienced radio/TV technician for help.

To maintain compliance with FCC's RF Exposure guidelines, This equipment should be installed and operated with minimum distance between 20cm the radiator your body: Use only the supplied antenna.