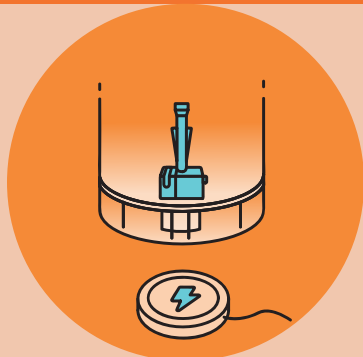


PET WATER FOUNTAIN

|||O
LOVE

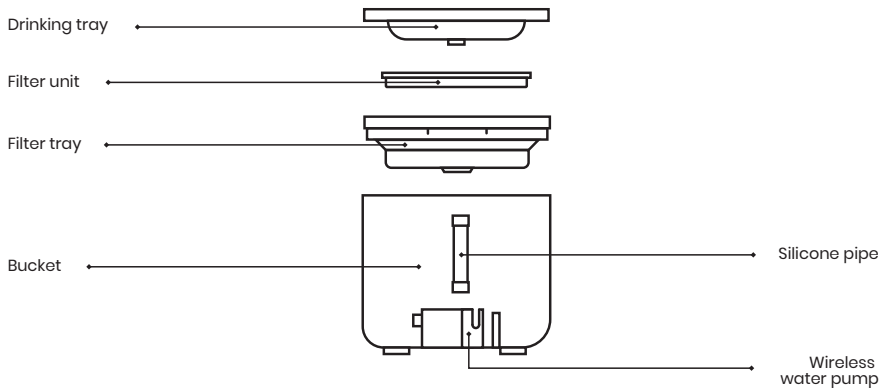
User Manual



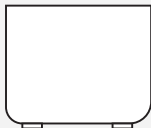
|||
<30dB



Product introduction



Package



Main body x1



Wireless water pump x1

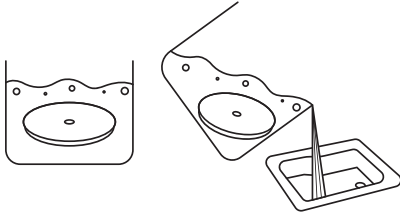


Filter unit x1



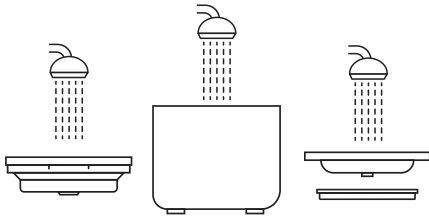
User Manual x1

Installation and use



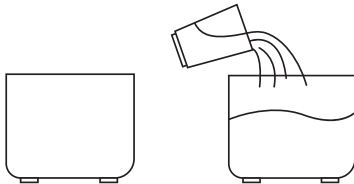
1 Soak the filter unit

Before installing, place the filter unit into water, soak and clean it thoroughly. (It is recommended to soak in water twice, 5 minutes each time and rinse slightly)



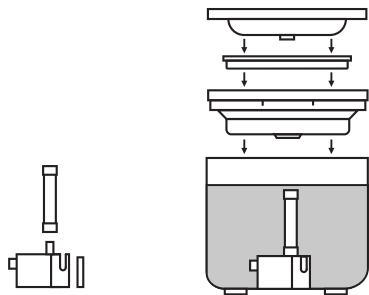
2 Rinse the tray set and bucket

Clean the tray set (drinking tray and filter tray) water storage barrel and internal accessories with clean water before use. (It's recommended to clean twice)



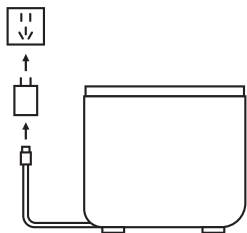
3 Add water

Dry the outer surface of the bucket, place it on the charging base, and add clean water to the maximum water mark.



4 Installation

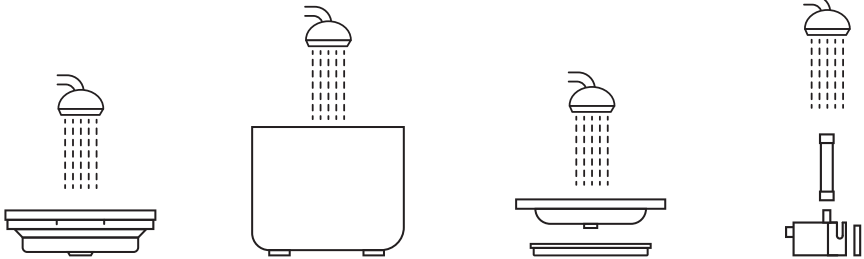
1. Take out the silicone pipe and align it with the water pump outlet, press it tightly. Be careful not to put it upside down.
2. Put the pump, filter tray, and drinking tray in proper order.



5 Connect the power supply

1. Connect the USB power port to the power plug, and then plug it into a power socket to start.

Maintenance and cleaning



Detach the parts, and wash the surfaces of the drinking tray, filter tray, water pump, and bucket. The sponge on the water pump also needs to be taken out and cleaned. It is recommended to clean these components once a week.

Specifications

When used for the first time, "black suspended particles" will appear on the water surface?

This is the first time activated carbon has been used. The presence of activated carbon components after being dissolved in water is a normal phenomenon and is not a product quality issue. Please clean up the suspended matter on the surface. This phenomenon will disappear naturally after a few days of continuous use.

What should I do if the water fountain stops spilling water?

This is the first time activated carbon has been used. The presence of activated carbon components after being dissolved in water is a normal phenomenon and is not a product quality issue. Please clean up the suspended matter on the surface. This phenomenon will disappear naturally after a few days of continuous use.

How often should the filter be replaced?

The filter unit of this product is a consumable, and it is recommended to replace it once every 1-2 months. The filter unit mainly plays the role of filtering water quality impurities, softening water, and removing peculiar smell, so that pets can drink clean all the time. For the sake of your pets' health, please replace the filter frequently according to the use of the filter element.

When used for the first time, "black suspended particles" will appear on the water surface?

We recommend cleaning the pet water dispenser and pump every week.

Safety Precautions

***Failure to comply with the following clauses may lead to that the product cannot be normally used or occurrence of other accidental losses. Please install and use device in strict accordance with the Manual.**

It is NOT suggested to use this device for young pets under three months alone. Please use it indoors.

Even if when this device is in low-voltage mode, it will still cause electricity leakage if the pet chews the wire. Please guide your pets to use it correctly. Please use original USB power cord, or the device will be damaged to produce potential safety hazards.

Place this device horizontally, and DO NOT overturn it, otherwise it will work abnormally or spill water.

It is prohibited to immerse or soak the bottom of the main machine of this product in water.

If the product is not used or is not moved for a long period of time, please unplug the power cord.

If child uses this device, please ensure that it is used under the guidance of adults. Please repair under the guidance of professionals to avoid various injuries.

Be sure to check the remaining water in the Fountain before taking a minor vacation. In case of product use problems, please contact customer service timely.

Fcc statement

This equipment has been tested and found to comply with the limits for a Class B digital device, pursuant to part 15 of the FCC Rules. These limits are designed to provide reasonable protection against harmful interference in a residential installation. This equipment generates, uses and can radiate radio frequency energy and, if not installed and used in accordance with the instructions, may cause harmful interference to radio communications. However, there is no guarantee that interference will not occur in a particular installation. If this equipment does cause harmful interference to radio or television reception, which can be determined by turning the equipment off and on, the user is encouraged to try to correct the interference by one or more of the following measures:

- Reorient or relocate the receiving antenna.
- Increase the separation between the equipment and receiver.
- Connect the equipment into an outlet on a circuit different from that to which the receiver is connected.
- Consult the dealer or an experienced radio/TV technician for help.

Caution: Any changes or modifications to this device not explicitly approved by manufacturer could void your authority to operate this equipment.

This device complies with part 15 of the FCC Rules. Operation is subject to the following two conditions: (1) This device may not cause harmful interference, and (2) this device must accept any interference received, including interference that may cause undesired operation.

RF Exposure Information

This equipment complies with FCC radiation exposure limits set forth for an uncontrolled environment. This equipment should be installed and operated with minimum distance 20cm between the radiator and your body.

Join HHOLOVE community to get the latest product information and giveaway treats.



Instagram



YouTube



Twitter



Facebook

Name: HHOLOVE Pet Water Fountain

Product Pattern: CT-FTKSD

Capacity: 1.6L

Size: 168*168*158mm

Net Weight: 0.675kg

Product Material: ABS/PC

Power Mode: 5V=1A

FC CE RoHS



For FAQ and more help,
please visit: <https://www.hholove.com/support>



Email Contact:
service@hholove.com

Made by HHO

Designed with LKK/Produced with PISEN

Made in China

Address: UNIT 3A-8,12/F KAISER CTR NO18 CENTRE ST,SAI YING PUN,HK



©HHO Limited, all rights reserved. HHOLOVE and its logo are trademarks of HHO Limited, registered in the US, EU and other countries.