



# FCC TEST REPORT

## FCC ID:2A5CSYD-2201

Product	:	smart lock
Model Name	:	YD-2201 (test model) YD-2202,YD-2203,YD-2204,YD-2205,YD-2206, YD-2207,YD-2208,YD-2209,YD-2211,YD-2212,YD-2213, YD-2214,YD-2215,E501,E502,E503
Brand	:	N/A
Report No.	:	PTC22021701301E-FC01
<b>Prepared for</b>		
Guangdong Yongding Technology Co., Ltd		
NO. 10 Chenglong Road ,Qianlong Industrial Zone,Sanxiang Towns,Zhongshan City,Guangdong Province		
<b>Prepared by</b>		
Precise Testing & Certification Co., Ltd		
Building 1, No. 6, Tongxin Road, Dongcheng Street, Dongguan, Guangdong, China		



## 1 TEST RESULT CERTIFICATION

Applicant's name : Guangdong Yongding Technology Co., Ltd

Address : NO. 10 Chenglong Road ,Qianlong Industrial Zone,Sanxiang Towns,Zhongshan City,Guangdong Province

Manufacture's name : Guangdong Yongding Technology Co., Ltd

Address : NO. 10 Chenglong Road ,Qianlong Industrial Zone,Sanxiang Towns,Zhongshan City,Guangdong Province

Product name : smart lock

Model name : YD-2201 (test model)  
YD-2202,YD-2203,YD-2204,YD-2205,YD-2206,YD-2207,  
YD-2208,YD-2209,YD-2211,YD-2212,YD-2213,YD-2214,  
YD-2215,E501,E502,E503

Standards : FCC CFR47 Part 15 Section 15.247

Test procedure : ANSI C63.10:2013

Test Date : Jan. 28, 2022 to Mar.24, 2022

Date of Issue : Mar.24, 2022

Test Result : Pass

This device described above has been tested by PTC, and the test results show that the equipment under test (EUT) is in compliance with the FCC requirements. And it is applicable only to the tested sample identified in the report.

This report shall not be reproduced except in full, without the written approval of PTC, this document may be altered or revised by PTC, personal only, and shall be noted in the revision of the document.

Test Engineer:

A handwritten signature in black ink that reads "Abel Yu".

Abel Yu / Engineer

Technical Manager:

A handwritten signature in black ink that reads "Wu Weimin".

Wu Weimin / Manager



## Contents

	<b>Page</b>
<b>1 TEST RESULT CERTIFICATION.....</b>	<b>2</b>
<b>2 TEST SUMMARY.....</b>	<b>5</b>
2.1 TEST SITE.....	6
<b>3 GENERAL INFORMATION.....</b>	<b>7</b>
3.1 GENERAL DESCRIPTION OF E.U.T.....	7
3.2 CHANNEL LIST.....	8
<b>4 EQUIPMENT DURING TEST.....</b>	<b>9</b>
4.1 EQUIPMENTS LIST.....	9
4.2 MEASUREMENT UNCERTAINTY.....	11
4.3 DESCRIPTION OF SUPPORT UNITS.....	12
<b>5 CONDUCTED EMISSION.....</b>	<b>13</b>
5.1 E.U.T. OPERATION.....	13
5.2 EUT SETUP.....	13
5.3 TEST SET-UP (BLOCK DIAGRAM OF CONFIGURATION).....	14
5.4 MEASUREMENT PROCEDURE.....	14
5.5 CONDUCTED EMISSION LIMIT.....	14
5.6 MEASUREMENT DESCRIPTION.....	14
5.7 CONDUCTED EMISSION TEST RESULT.....	14
<b>6 RADIATED SPURIOUS EMISSIONS.....</b>	<b>15</b>
6.1 EUT OPERATION.....	15
6.2 TEST SETUP.....	16
6.3 SPECTRUM ANALYZER SETUP.....	17
6.4 TEST PROCEDURE.....	18
6.5 SUMMARY OF TEST RESULTS.....	20
<b>7 BAND EDGE MEASUREMENT.....</b>	<b>26</b>
7.1 TEST PROCEDURE.....	26
7.2 TEST RESULT.....	27
<b>8 6DB BANDWIDTH MEASUREMENT.....</b>	<b>30</b>



8.1	TEST PROCEDURE.....	30
8.2	TEST RESULT.....	30
<b>9</b>	<b>MAXIMUM PEAK OUTPUT POWER.....</b>	<b>36</b>
9.1	TEST PROCEDURE.....	36
9.2	TEST RESULT.....	36
<b>10</b>	<b>POWER SPECTRAL DENSITY.....</b>	<b>40</b>
10.1	TEST PROCEDURE.....	40
10.2	TEST RESULT.....	40
<b>11</b>	<b>ANTENNA APPLICATION.....</b>	<b>44</b>
11.1	ANTENNA REQUIREMENT.....	44
11.2	RESULT.....	44
<b>12</b>	<b>TEST SETUP.....</b>	<b>45</b>
<b>13</b>	<b>EUT PHOTOS.....</b>	<b>46</b>



## 2 Test Summary

Test Items	Test Requirement	Result
Conduct Emission	15.207	N/A
Radiated Spurious Emissions	15.205(a) 15.209 15.247(d)	PASS
Conducted Spurious Emission	15.247(d)	PASS
Band edge	15.247(d) 15.205(a)	PASS
6dB Bandwidth	15.247(a)(2)	PASS
Maximum Peak Output Power	15.247(b)(1)	PASS
Power Spectral Density	15.247(e)	PASS
Antenna Requirement	15.203	PASS



Report No.: PTC22021701301E-FC01

## 2.1 Test Site

Precise Testing & Certification Co., Ltd

Address: Building 1, No. 6, Tongxin Road, Dongcheng Street, Dongguan, Guangdong, China

FCC Registration Number: 790290

A2LA Certificate No.: 4408.01

IC Registration Number: 12191A-1



### 3 General Information

#### 3.1 General Description of E.U.T.

Product Name	:	smart lock
Model Name	:	YD-2201 (test model) YD-2202, YD-2203, YD-2204, YD-2205, YD-2206, YD-2207, YD-2208, YD-2209, YD-2211, YD-2212, YD-2213, YD-2214, YD-2215, E501, E502, E503 Note: Appearance color is different from model name
Bluetooth Version	:	BLE5.0
Operating frequency	:	2402-2480MHz
Number of Channels	:	40
Type of Modulation	:	GFSK
Antenna installation	:	PCB Antenna
Antenna Gain	:	0dBi
Power	:	DC 6V(4*1.5v dry battery) DC 5V/1A(emergency power supply)
Hardware Version	:	1.0
Software Version	:	1.0



### 3.2 Channel List

The EUT has been tested under its typical operating condition. Pre-defined engineering program for regulatory testing used to control the EUT for staying in continuous transmitting. Only the worst case data were reported.

The EUT has been associated with peripherals pursuant to ANSI C63.10-2013 and configuration operated in a manner tended to maximize its emission characteristics in a typical application. Frequency range investigated: radiation (9 KHz to the 10th harmonic of the highest fundamental frequency or to 40 GHz, whichever is lower).

The details of test channels and bandwidth were for RF conductive measurement.

Channel List:

Channel	Frequency (MHz)	Channel	Frequency (MHz)	Channel	Frequency (MHz)
00	<b>2402</b>	14	2430	28	2458
01	2404	15	2432	29	2460
02	2406	16	2434	30	2462
03	2408	17	2436	31	2464
04	2410	18	2438	32	2466
05	2412	<b>19</b>	<b>2440</b>	33	2468
06	2414	20	2442	34	2470
07	2416	21	2444	35	2472
08	2418	22	2446	36	2474
09	2420	23	2448	37	2476
10	2422	24	2450	38	2478
11	2424	25	2452	39	<b>2480</b>
12	2426	26	2454		
13	2428	27	2456		

Note:

1. Test of channel was included the lowest 2402MHz, middle 2440MHz and highest frequency 2480MHz in highest data rate and to perform the test, then record on this report.





## 4 Equipment During Test

### 4.1 Equipments List

Name of Equipment	Manufacturer	Model	Serial No.	Characteristics	Calibration Due	Interval time
MXG Signal Analyzer	Agilent	N9020A	MY56070279	10Hz-30GHz	Sep.18, 2022	1 Year
Coaxial Cable	CDS	79254	46107086	10Hz-30GHz	Sep.18, 2022	1 Year
Power Meter	Anritsu	ML2495A	0949003	300MHz-40GHz	Sep.18, 2022	1 Year
Power Sensor	Anritsu	MA2411B	0917017	300MHz-40GHz	Sep.18, 2022	1 Year

Remark: The temporary antenna connector is soldered on the PCB board in order to perform conducted tests and this temporary antenna connector is listed in the equipment list.

#### Radiated Emissions

Name of Equipment	Manufacturer	Model	Serial No.	Characteristics	Calibration Due	Interval time
EMI Test Receiver	Rohde&Schwarz	ESCI	101417	9KHz-3GHz	Sep.18, 2022	1 Year
Active Loop antenna	Schwarzbeck	FMZB-1519	1519-038	9K-30MHz	Sep.18, 2022	1 Year
Bilog Antenna	SCHWARZBECK	VULB9160	9160-3355	25MHz-2GHz	Sep.18, 2022	1 Year
Preamplifier (low frequency)	SCHWARZBECK	BBV 9475	9745-0013	1MHz-1GHz	Sep.18, 2022	1 Year
Cable	Schwarzbeck	PLF-100	549489	9KHz-3GHz	Sep.18, 2022	1 Year
Spectrum Analyzer	Agilent	E4407B	MY45109572	9KHz-40GHz	Sep.18, 2022	1 Year
Horn Antenna	SCHWARZBECK	9120D	9120D-1246	1GHz-18GHz	Sep.18, 2022	1 Year
Power Amplifier	LUNAR EM	LNA1G18-40	J10100000081	1GHz-26.5GHz	Sep.18, 2022	1 Year
Horn Antenna	SCHWARZBECK	BBHA 9170	9170-181	14GHz-40GHz	Sep.18, 2022	1 Year
Amplifier	SCHWARZBECK	BBV 9721	9721-205	18GHz-40GHz	Sep.18, 2022	1 Year
Cable	H+S	CBL-26	N/A	1GHz-26.5GHz	Sep.18, 2022	1 Year
RF Cable	R&S	R204	R21X	1GHz-40GHz	Sep.18, 2022	1 Year



Conducted Emissions

<b>Name of Equipment</b>	<b>Manufacturer</b>	<b>Model</b>	<b>Serial No.</b>	<b>Characteristics</b>	<b>Calibration Due</b>	<b>Interval time</b>
EMI Test Receiver	Rohde&Schwarz	ESCI	101417	9KHz-3GHz	Sep.18, 2022	1 Year
Artificial Mains Network	Rohde&Schwarz	L2-16B	000WX31025	9KHz-300MHz	Sep.18, 2022	1 Year
Artificial Mains Network	Rohde&Schwarz	ENV216	101342	9KHz-300MHz	Sep.18, 2022	1 Year



## 4.2 Measurement Uncertainty

Parameter	Uncertainty
RF output power, conducted	±1.0dB
Power Spectral Density, conducted	±2.2dB
Radio Frequency	± 1 x 10 <sup>-6</sup>
Bandwidth	± 1.5 x 10 <sup>-6</sup>
Time	±2%
Duty Cycle	±2%
Temperature	±1°C
Humidity	±5%
DC and low frequency voltages	±3%
Conducted Emissions (150kHz~30MHz)	±3.64dB
Radiated Emission(9KHz~30MHz)	±3.15dB
Radiated Emission(30MHz~1GHz)	±5.03dB
Radiated Emission(1GHz~25GHz)	±4.74dB
Remark: The coverage Factor (k=2), and measurement Uncertainty for a level of Confidence of 95%	



Report No.: PTC22021701301E-FC01

### 4.3 Description of Support Units

Equipment	Model No.	Series No.
--	--	N/A

## 5 Conducted Emission

Test Requirement	:	FCC CFR 47 Part 15 Section 15.207
Test Method	:	ANSI C63.10: 2013
Test Result	:	PASS
Frequency Range	:	150kHz to 30MHz
Class/Severity	:	Class B

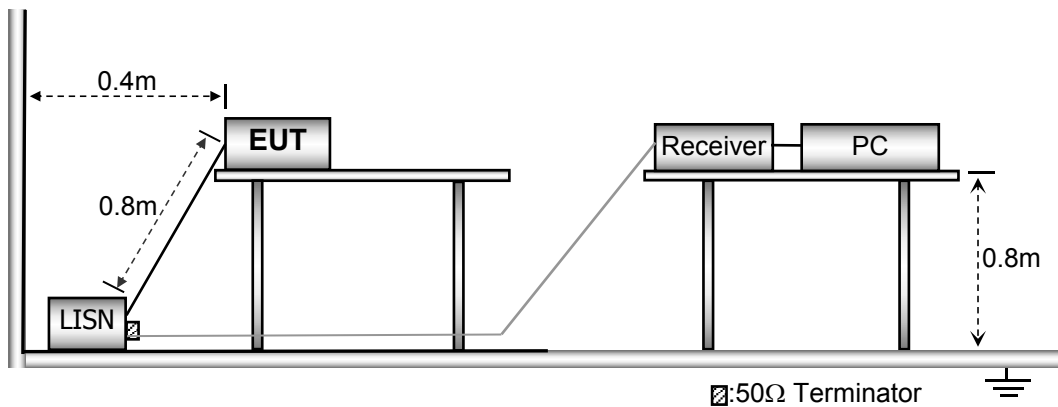
### 5.1 E.U.T. Operation

Operating Environment :

Temperature	:	25.5 °C
Humidity	:	51 % RH
Atmospheric Pressure	:	101.2kPa

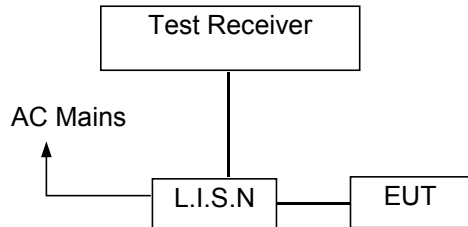
### 5.2 EUT Setup

The conducted emission tests were performed using the setup accordance with the ANSI C63.10:2013.





### 5.3 Test SET-UP (Block Diagram of Configuration)



### 5.4 Measurement Procedure

1. The EUT was placed on a table, which is 0.8m above ground plane.
2. Maximum procedure was performed on the six highest emissions to ensure EUT compliance.
3. Repeat above procedures until all frequency measured was complete.

### 5.5 Conducted Emission Limit

#### Conducted Emission

Frequency(MHz)	Quasi-peak	Average
0.15-0.5	66-56	56-46
0.5-5.0	56	46
5.0-30.0	60	50

#### Note:

1. The lower limit shall apply at the transition frequencies
2. The limit decreases in line with the logarithm of the frequency in the range of 0.15 to 0.50MHz.

### 5.6 Measurement Description

The maximised peak emissions from the EUT was scanned and measured for both the Live and Neutral Lines. Quasi-peak & average measurements were performed if peak emissions were within 6dB of the average limit line.

### 5.7 Conducted Emission Test Result

The EUT was power by DC 6V (dry battery 1.5V \* 4pcs), no need required.



## 6 Radiated Spurious Emissions

Test Requirement : FCC CFR47 Part 15 Section 15.209 & 15.247  
 Test Method : ANSI C63.10:2013  
 Test Result : PASS  
 Measurement Distance : 3m  
 Limit : See the follow table

Frequency (MHz)	Field Strength		Field Strength Limit at 3m Measurement Dist	
	uV/m	Distance (m)	uV/m	dBuV/m
0.009 ~ 0.490	$2400/F(\text{kHz})$	300	$10000 * 2400/F(\text{kHz})$	$20\log^{(2400/F(\text{kHz}))} + 80$
0.490 ~ 1.705	$24000/F(\text{kHz})$	30	$100 * 24000/F(\text{kHz})$	$20\log^{(24000/F(\text{kHz}))} + 40$
1.705 ~ 30	30	30	$100 * 30$	$20\log^{(30)} + 40$
30 ~ 88	100	3	100	$20\log^{(100)}$
88 ~ 216	150	3	150	$20\log^{(150)}$
216 ~ 960	200	3	200	$20\log^{(200)}$
Above 960	500	3	500	$20\log^{(500)}$

### 6.1 EUT Operation

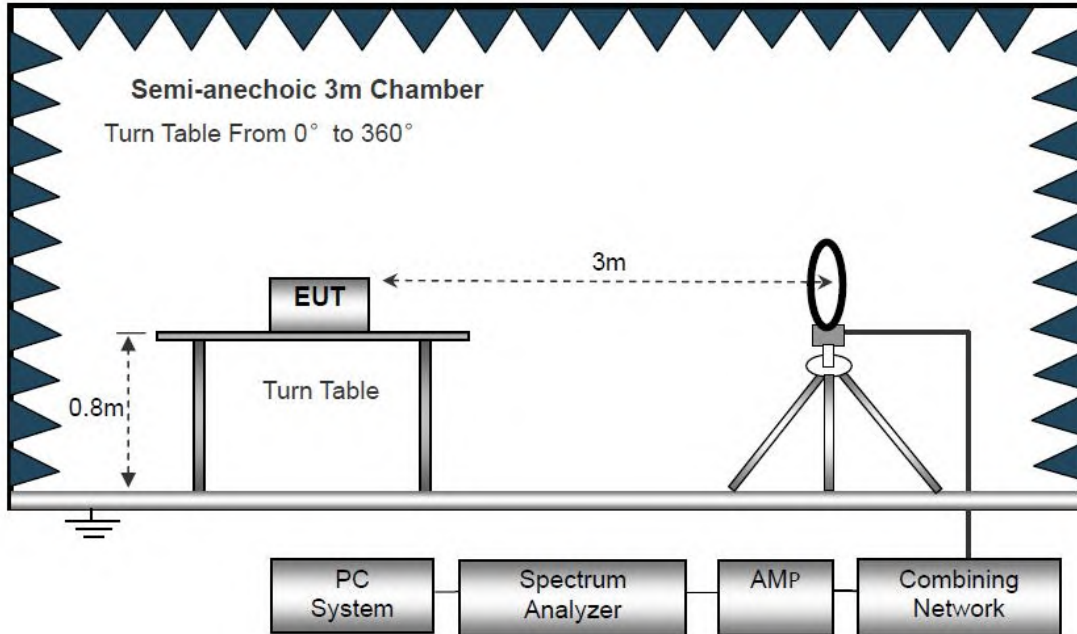
Operating Environment :

Temperature : 23.5 °C  
 Humidity : 51.1 % RH  
 Atmospheric Pressure : 101.2kPa

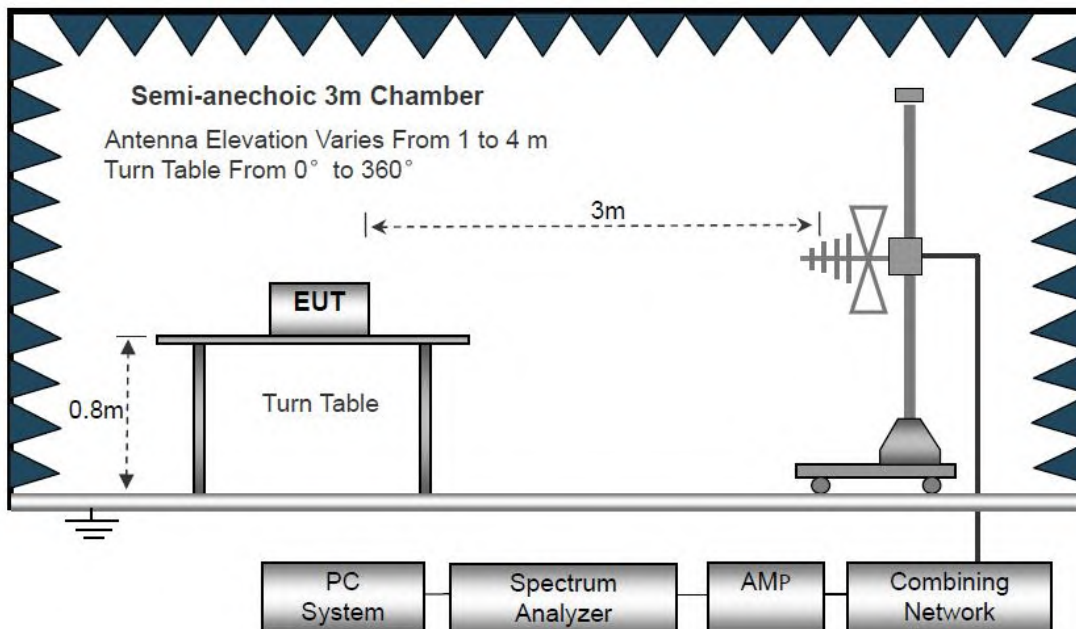
## 6.2 Test Setup

The radiated emission tests were performed in the 3m Semi- Anechoic Chamber test site

The test setup for emission measurement below 30MHz

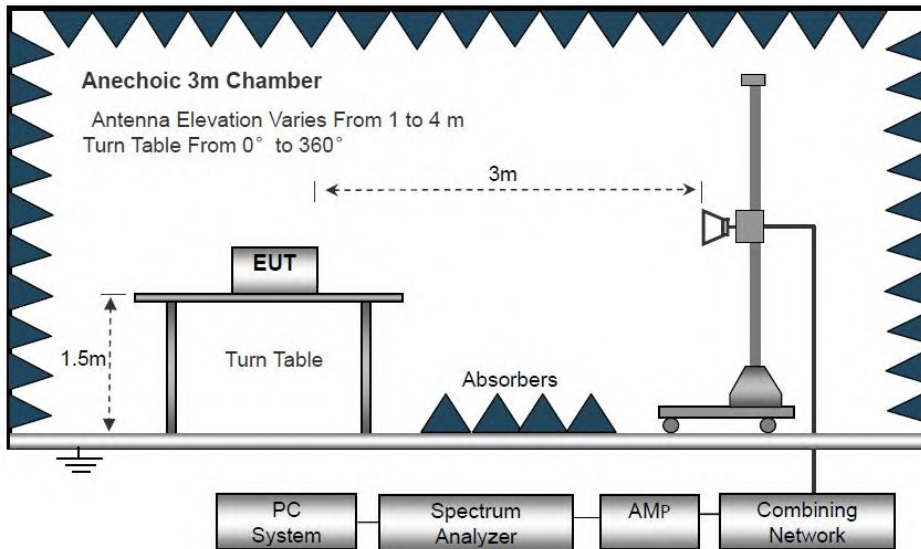


The test setup for emission measurement from 30 MHz to 1 GHz.





The test setup for emission measurement above 1 GHz



### 6.3 Spectrum Analyzer Setup

Below 30MHz			
IF Bandwidth	:	10kHz	
Resolution Bandwidth	:	10kHz	
Video Bandwidth	:	10kHz	
30MHz ~ 1GHz			
Detector	:	PK	QP
Resolution Bandwidth	:	100kHz	120kHz
Video Bandwidth	:	300kHz	300kHz
Above 1GHz			
Detector	:	PK	AV
Resolution Bandwidth	:	1MHz	1MHz
Video Bandwidth	:	3MHz	10Hz



## 6.4 Test Procedure

1. The testing follows the guidelines in Spurious Radiated Emissions of ANSI C63.10-2013.
2. Below 1000MHz, The EUT was placed on a turn table which is 0.8m above ground plane. And above 1000MHz, The EUT was placed on a styrofoam table which is 1.5m above ground plane.
3. The EUT was set 3 meters from the interference receiving antenna, which was mounted on the top of a variable height antenna tower.
4. For each suspected emission, the EUT was arranged to its worst case and then tune the Antenna tower (From 1m to 4m) and turntable (from 0 degree to 360 degree) to find the maximum reading. A pre-amp and a high pass filter are used for the test in order to get better signal level to comply with the guidelines.
5. Set to the maximum power setting and enable the EUT transmit continuously.
6. Final measurement (Above 1GHz): The frequency range will be divided into different sub ranges depending of the frequency range of the used horn antenna. The EMI Receiver set to peak and average mode and a resolution bandwidth of 1MHz. The measurement will be performed in horizontal and vertical polarization of the measuring antenna and while rotating the EUT in its vertical axis in the range of 0 degree to 360 degree in order to have the antenna inside the cone of radiation.
7. Test Procedure of measurement (For Above 1GHz):
  - 1) Monitor the frequency range at horizontal polarization and move the antenna over all sides of the EUT(if necessary move the EUT to another orthogonal axis).
  - 2) Change the antenna polarization and repeat 1) with vertical polarization.
  - 3) Make a hardcopy of the spectrum.
  - 4) Measure the frequency of the detected emissions with a lower span and resolution bandwidth to increase the accuracy and note the frequency value.
  - 5) Change the analyser mode to Clear/ Write and found the cone of emission.
  - 6) Rotate and move the EUT, so that the measuring distance can be enlarged to 3m and the antenna will be still inside the cone of emission.
  - 7) Measure the level of the detected frequency with the correct resolution bandwidth, with the antenna polarization and azimuth and the peak and average detector, which causes the maximum emission.
  - 8) Repeat steps 1) to 7) for the next antenna spot if the EUT is larger than the antenna beamwidth.
8. The radiation measurements are tested under 3-axes(X,Y,Z) position(X denotes lying on the table, Y denotes side stand and Z denotes vertical stand), After pre-test, It was found that the worse radiation emission was get at the X position. So the data shown was the X position only.



For Average Measurement:

VBW=10Hz, when duty cycle is no less than 98 percent.

VBW $\geq$ 1/T, when duty cycle is less than 98 percent where T is the minimum transmission duration over which the transmitter is on and is transmitting at its maximum power control level for the tested mode of operation.

Band	Duty Cycle(%)	T( $\mu$ s)	1/T(KHz)	Average Correction Factor	VBW Setting
2402-2480	100	-	-	0	10Hz



## 6.5 Summary of Test Results

### Test Frequency: 9KHz-30MHz

Freq. (MHz)	Ant.Pol. H/V	Emission Level (dBuV/m)	Limit 3m (dBuV/m)	Over (dB)
--	--	--	--	>20

Note:

The amplitude of spurious emission that is attenuated by more than 20dB below the permissible limit has no need to be reported.

Distance extrapolation factor =  $40\log(\text{Specific distance} / \text{test distance})$  (dB);

Limit line = Specific limits (dBuV) + distance extrapolation factor.

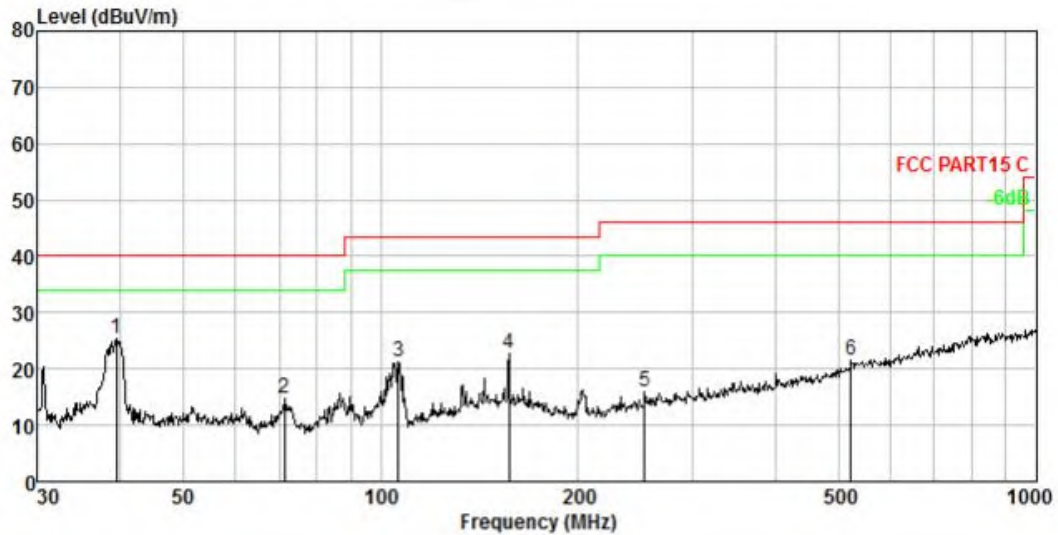
### Test Frequency: 30MHz ~ 1GHz

Pass.

Please refer to the following test plots for the worst test mode (GFSK (CH00: 2402MHz)).



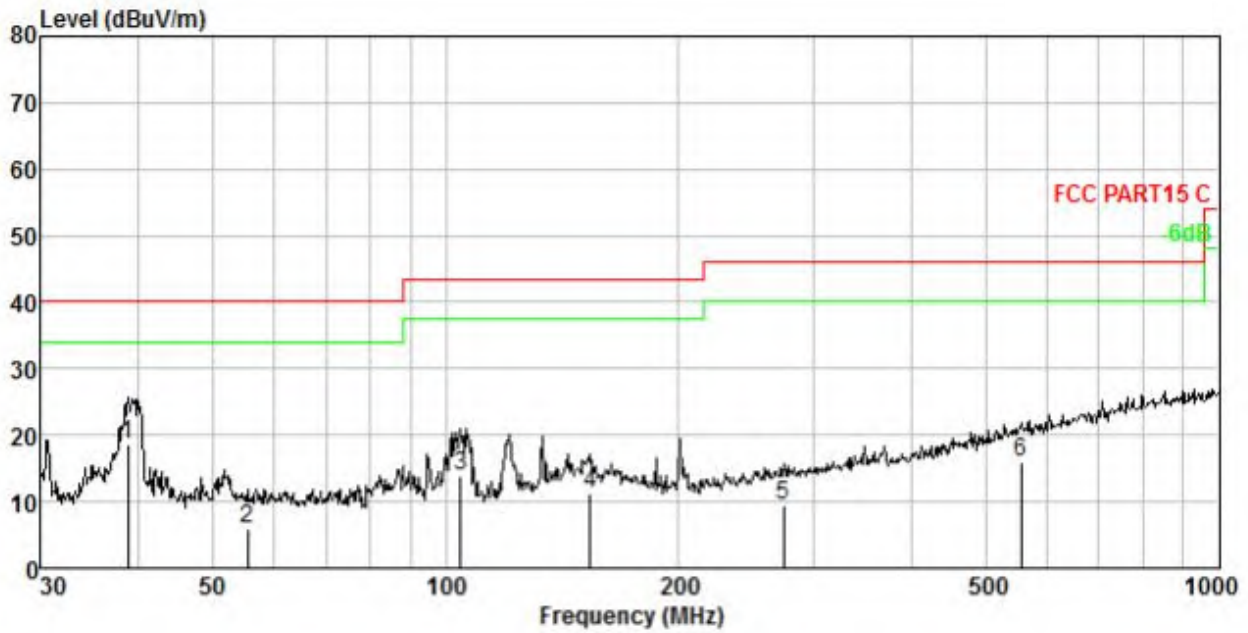
Antenna Polarization: Horizontal GFSK(CH00: 2402MHz)



No.	Freq MHz	Cable Loss dB	ANT Factor dB/m	Receiver Reading dBuV	Preamp Factor dB	Emission Level dBuV/m	Limit dBuV/m	Over Limit dB	Remark
1.	39.567	1.68	12.11	41.62	29.91	25.50	40.00	-14.50	QP
2.	71.288	2.69	9.92	32.05	29.96	14.70	40.00	-25.30	QP
3.	106.550	3.38	10.40	37.43	29.99	21.22	43.50	-22.28	QP
4.	157.023	4.05	13.99	34.73	30.02	22.75	43.50	-20.75	QP
5.	252.727	4.86	12.54	28.75	30.20	15.95	46.00	-30.05	QP
6.	522.447	6.11	17.75	28.58	30.93	21.51	46.00	-24.49	QP

Remark: Emission Level = Reading + Cable Loss + ANT Factor - AMP Factor

Antenna Polarization: Vertical GFSK(CH00: 2402MHz)



No.	Freq MHz	Cable Loss dB	ANT Factor dB/m	Receiver Reading dBUV	Preamp Factor dB	Emission Level dBUV/m	Limit dBUV/m	Over Limit dB	Remark
1.	38.876	1.65	12.12	34.74	29.91	18.60	40.00	-21.40	QP
2.	55.502	2.26	12.06	21.43	29.93	5.82	40.00	-34.18	QP
3.	104.688	3.35	10.18	30.27	29.99	13.81	43.50	-29.69	QP
4.	153.737	4.01	13.86	23.34	30.02	11.19	43.50	-32.31	QP
5.	274.072	5.00	12.85	21.91	30.26	9.50	46.00	-36.50	QP
6.	554.715	6.22	18.52	22.17	30.96	15.95	46.00	-30.05	QP

Remark: Emission Level = Reading + Cable Loss + ANT Factor - AMP Factor



**Test Frequency 1GHz-25GHz:**

**GFSK Low Channel (2402MHz)**

Frequency (MHz)	S.A Reading (dBuV)	Detector (PK/AV)	Polarity (H/V)	Ant. Factor (dB/m)	Cable Loss (dB)	Pre-Amp. Gain (dB)	Emission Level (dBuV/m)	Limit (dBuV/m)	Margin (dB)
4824	25.44	AV	V	7.48	8.55	8.23	31.24	54	-22.76
4824	26.38	AV	H	7.48	8.55	8.23	33.18	54	-20.82
4824	30.15	PK	V	7.48	8.55	8.23	38.95	74	-35.05
4824	32.47	PK	H	7.48	8.55	8.23	41.27	74	-32.73
14786	28.38	AV	V	8.62	9.17	9.46	36.71	54	-17.29
14786	29.42	AV	H	8.62	9.17	9.46	37.75	54	-16.25
14786	31.55	PK	V	8.62	9.17	9.46	38.88	74	-35.12
14786	33.48	PK	H	8.62	9.17	9.46	40.81	74	-33.19

**GFSK Middle Channel (2440MHz)**

Frequency (MHz)	S.A Reading (dBuV)	Detector (PK/AV)	Polarity (H/V)	Ant. Factor (dB/m)	Cable Loss (dB)	Pre-Amp. Gain (dB)	Emission Level (dBuV/m)	Limit (dBuV/m)	Margin (dB)
4880	26.53	AV	V	8.11	9.45	12.59	32.55	54	-21.45
4880	27.45	AV	H	8.11	9.45	12.59	33.41	54	-20.59
4880	31.09	PK	V	8.11	9.45	12.59	35.16	74	-38.84
4880	32.95	PK	H	8.11	9.45	12.59	35.99	74	-38.01
16352	27.48	AV	V	9.23	11.04	11.75	36.33	54	-17.67
16352	28.62	AV	H	9.23	11.04	11.75	36.16	54	-17.84
16352	31.46	PK	V	9.23	11.04	11.75	37.94	74	-36.06
16352	33.58	PK	H	9.23	11.04	11.75	43.14	74	-30.86



**GFSK High Channel (2480MHz)**

Frequency (MHz)	S.A Reading (dBuV)	Detector (PK/AV)	Polarity (H/V)	Ant. Factor (dB/m)	Cable Loss (dB)	Pre-Amp. Gain (dB)	Emission Level (dBuV/m)	Limit (dBuV/m)	Margin (dB)
4960	26.35	AV	V	8.19	8.28	10.47	31.35	54	-22.65
4960	27.42	AV	H	8.19	8.28	10.47	34.42	54	-19.58
4960	30.48	PK	V	8.19	8.28	10.47	35.48	74	-38.52
4960	32.00	PK	H	8.19	8.28	10.47	39	74	-35
16584	28.46	AV	V	9.27	9.51	11.05	35.19	54	-18.81
16584	29.15	AV	H	9.27	9.51	11.05	37.88	54	-16.12
16584	30.25	PK	V	9.27	9.51	11.05	36.98	74	-37.02
16584	31.69	PK	H	9.27	9.51	11.05	38.42	74	-35.58

Note: 1. The testing has been conformed to 10\*2480MHz=24800MHz.

- 2. All other emissions more than 30dB below the limit.
- 3. Factor = Antenna Factor + Cable Loss – Pre-amplifier.  
 Emission Level = Reading + Factor  
 Margin=Emission Level-Limit

**Spurious Emission in Restricted Band 2310-2390MHz and 2483.5-2500MHz**

Test Mode: BLE Low Channel 2402MHz									
Frequency (MHz)	Read Level (dBuV)	Antenna Factor (dB/m)	Cable Loss (dB)	Preamp Factor (dB)	Level (dBuV/m)	Limit (dBuV/m)	Over (dB)	Polarity H/V	Test Value
2310.00	49.48	29.15	3.41	34.01	49.03	74	-24.97	V	Peak
2390.00	67.22	29.16	3.43	34.01	64.8	74	-9.2	V	
2310.00	50.66	29.15	3.41	34.01	48.21	74	-25.79	H	
2390.00	69.96	29.16	3.43	34.01	69.54	74	-4.46	H	
2310.00	38.54	29.15	3.41	34.01	38.09	54	-15.91	V	Average
2390.00	50.17	29.16	3.43	34.01	49.75	54	-4.25	V	
2310.00	38.96	29.15	3.41	34.01	38.51	54	-15.49	H	
2390.00	47.45	29.16	3.43	34.01	47.03	54	-6.97	H	





Test Mode: BLE High Channel 2480MHz									
Frequency (MHz)	Read Level (dBuV)	Antenna Factor (dB/m)	Cable Loss (dB)	Preamp Factor (dB)	Level (dBuV/m)	Limit (dBuV/m)	Over (dB)	Polarity H/V	Test Value
2483.50	52.37	29.28	3.53	34.03	50.15	74	-23.85	V	Peak
2500.00	50.29	29.30	3.56	34.03	48.12	74	-25.88	V	
2483.50	54.32	29.28	3.53	34.03	53.1	74	-20.9	H	
2500.00	51.92	29.30	3.56	34.03	51.74	74	-22.26	H	
2483.50	41.45	29.28	3.53	34.03	401.23	54	347.23	V	Average
2500.00	38.50	29.30	3.56	34.03	39.33	54	-14.67	V	
2483.50	43.21	29.28	3.53	34.03	40.99	54	-13.01	H	
2500.00	38.98	29.30	3.56	34.03	38.81	54	-15.19	H	



## 7 Band Edge Measurement

- Test Requirement : Section 15.247(d) In addition, radiated emissions which fall in the restricted bands. as defined in Section 15.205(a), must also comply with the radiated emission limits specified in Section 15.209(a) (see Section 15.205(c)).
- Test Method : ANSI C63.10:2013
- Test Limit : Regulation 15.247 (d), In any 100 kHz bandwidth outside the frequency band in which the spread spectrum or digitally modulated intentional radiator is operating, the radio frequency power that is produced by the intentional radiator shall be at least 20 dB below that in the 100 kHz bandwidth within the band that contains the highest level of the desired power, based on either an RF conducted or a radiated measurement, provided the transmitter demonstrates compliance with the peak conducted power limits. If the transmitter complies with the conducted power limits based on the use of RMS averaging over a time interval, as permitted under paragraph (b)(3) of this section, the attenuation required under this paragraph shall be 30 dB instead of 20 dB. Attenuation below the general limits specified in §15.209(a) is not required. In addition, radiated emissions which fall in the restricted bands, as defined in §15.205(a), must also comply with the radiated emission limits specified in §15.209(a) (see §15.205(c)).

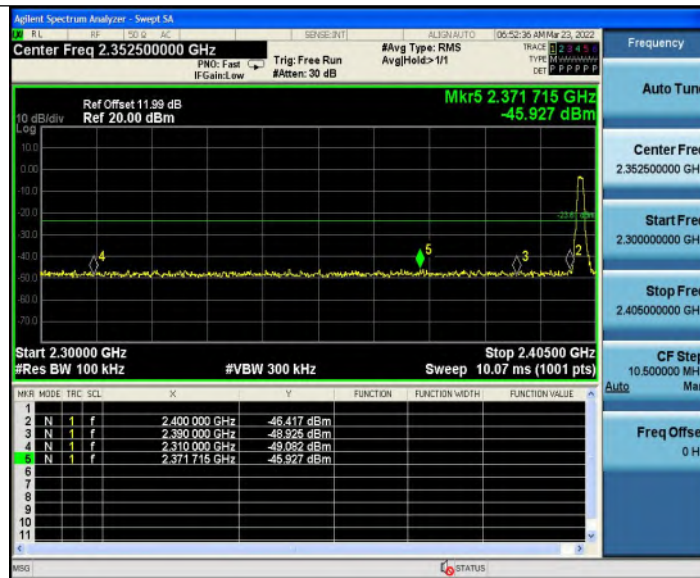
### 7.1 Test Procedure

1. Remove the antenna from the EUT and then connect a low RF cable from the antenna port to the spectrum;
2. Set the spectrum analyzer: RBW = 100kHz, VBW = 300kHz, Sweep = auto  
Detector function = peak, Trace = max hold

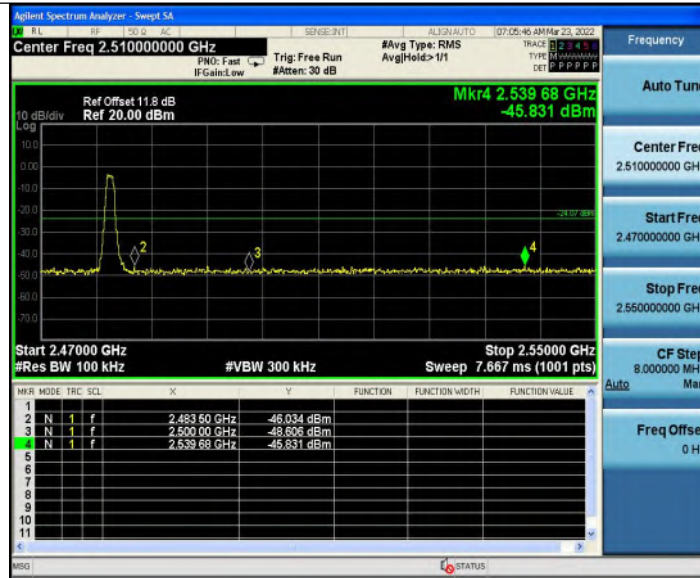


## 7.2 Test Result

TestMode	Antenna	ChName	Channel	RefLevel[dBm]	Result[dBm]	Limit[dBm]	Verdict
BLE_1M	Ant1	Low	2402	-3.61	-45.93	≤-23.61	PASS
		High	2480	-4.07	-45.83	≤-24.07	PASS
BLE_2M	Ant1	Low	2402	-4.02	-33.96	≤-24.02	PASS
		High	2480	-4.47	-45.53	≤-24.47	PASS



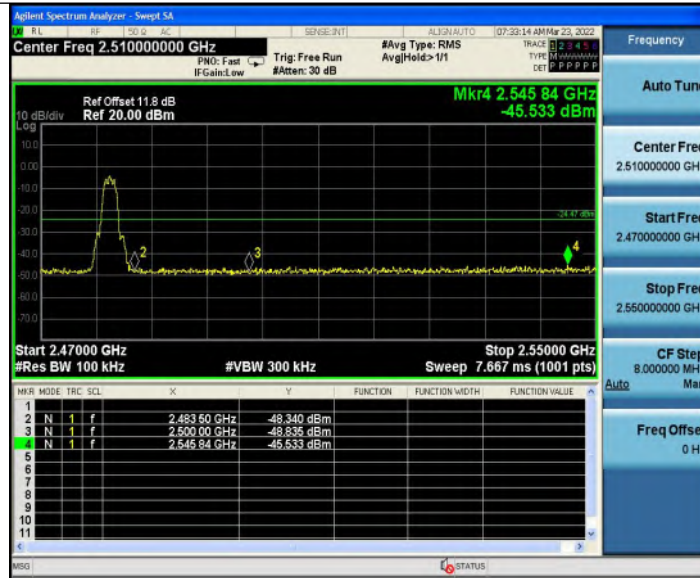
BLE\_1M\_Ant1\_Low\_2402



BLE\_1M\_Ant1\_High\_2480



BLE\_2M\_Ant1\_Low\_2402



BLE\_2M\_Ant1\_High\_2480



## 8 6dB Bandwidth Measurement

Test Requirement : FCC CFR47 Part 15 Section 15.247

Test Method : ANSI C63.10:2013

Test Limit : Systems using digital modulation techniques may operate in the 902-928 MHz, 2400-2483.5 MHz, and 5725-5850 MHz bands. The minimum 6 dB bandwidth shall be at least 500 kHz.

### 8.1 Test Procedure

1. Remove the antenna from the EUT and then connect a low RF cable from the antenna port to the spectrum;
2. Set the spectrum analyzer: RBW = 100kHz, VBW = 300kHz

### 8.2 Test Result

TestMode	Antenna	Channel	OCB [MHz]	FL[MHz]	FH[MHz]	Limit[MHz]
BLE_1M	Ant1	2402	1.3696	2401.325	2402.695	>0.5
		2440	1.3146	2439.358	2440.673	>0.5
		2480	1.3204	2479.358	2480.678	>0.5
BLE_2M	Ant1	2402	2.2538	2400.870	2403.124	>0.5
		2440	2.2154	2438.900	2441.116	>0.5
		2480	2.2208	2478.901	2481.122	>0.5



BLE\_1M\_Ant1\_2402



BLE\_1M\_Ant1\_2440





BLE\_1M\_Ant1\_2480



BLE\_2M\_Ant1\_2402

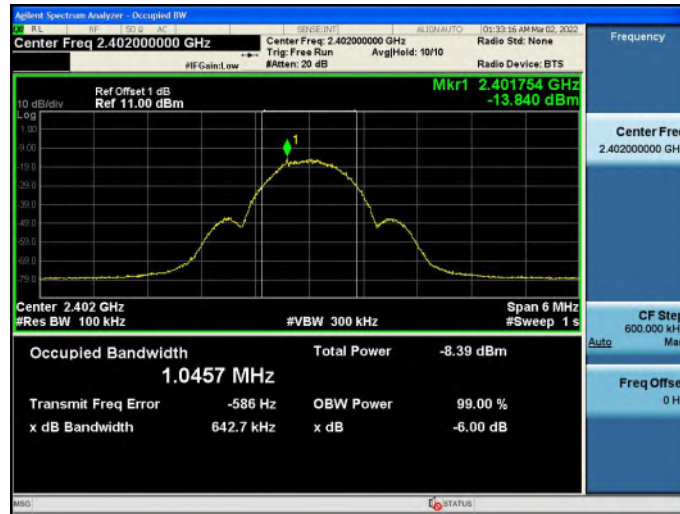


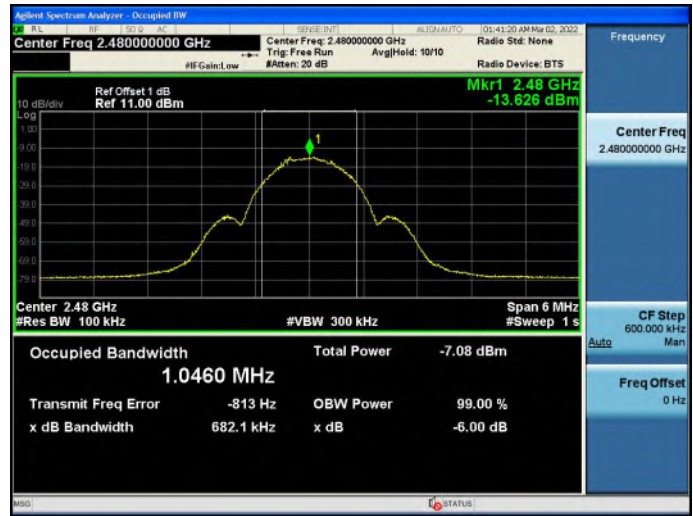


BLE\_2M\_Ant1\_2440



BLE\_2M\_Ant1\_2480







## 9 Maximum Peak Output Power

Test Requirement : FCC CFR47 Part 15 Section 15.247  
Test Method : ANSI C63.10:2013  
Test Limit : Regulation 15.247 (b)(3), For systems using digital modulation in the 902-928 MHz, 2400-2483.5 MHz, and 5725-5850 MHz bands: 1 Watt. As an alternative to a peak power measurement, compliance with the one Watt limit can be based on a measurement of the maximum conducted output power.

### 9.1 Test Procedure

1. The RF output of EUT was connected to the spectrum analyzer by RF cable and attenuator. The path loss was compensated to the results for each measurement.
2. Set to the maximum power setting and enable the EUT transmit continuously.
3. Measure the conducted output power and record the results in the test report.

### 9.2 Test Result

TestMode	Antenna	Channel	Result[dBm]	Limit[dBm]	Verdict
BLE_1M	Ant1	2402	-1.44	≤30	PASS
		2440	-1.93	≤30	PASS
		2480	-1.94	≤30	PASS
BLE_2M	Ant1	2402	-1.43	≤30	PASS
		2440	-1.94	≤30	PASS
		2480	-1.87	≤30	PASS



BLE\_1M\_Ant1\_2402



BLE\_1M\_Ant1\_2440



BLE\_1M\_Ant1\_2480



BLE\_2M\_Ant1\_2402





BLE\_2M\_Ant1\_2440



BLE\_2M\_Ant1\_2480



## 10 Power Spectral density

- Test Requirement : FCC CFR47 Part 15 Section 15.247
- Test Method : ANSI C63.10:2013
- Test Limit : Regulation 15.247(f) The power spectral density conducted from the intentional radiator to the antenna due to the digital modulation operation of the hybrid system, with the frequency hopping operation turned off, shall not be greater than 8 dBm in any 3 kHz band during any time interval of continuous transmission.

### 10.1 Test Procedure

1. Remove the antenna from the EUT and then connect a low RF cable from the antenna port to the spectrum.
2. Set the spectrum analyzer: RBW = 3kHz. VBW = 10kHz , Span = 1.5 times the DTS channel bandwidth(6 dB bandwidth). Sweep = auto; Detector Function = Peak. Trace = Max hold.
3. Allow the trace to stabilize. Use the marker-delta function to determine the separation between the peaks of the adjacent channels. The limit is specified in one of the subparagraphs of this Section Submit this plot.

### 10.2 Test Result

TestMode	Antenna	Channel	Result[dBm/3-100kHz]	Limit[dBm/3kHz]	Verdict
BLE_1M	Ant1	2402	-16.57	≤8.00	PASS
		2440	-17.07	≤8.00	PASS
		2480	-16.96	≤8.00	PASS
BLE_2M	Ant1	2402	-18.67	≤8.00	PASS
		2440	-19.26	≤8.00	PASS
		2480	-19.26	≤8.00	PASS

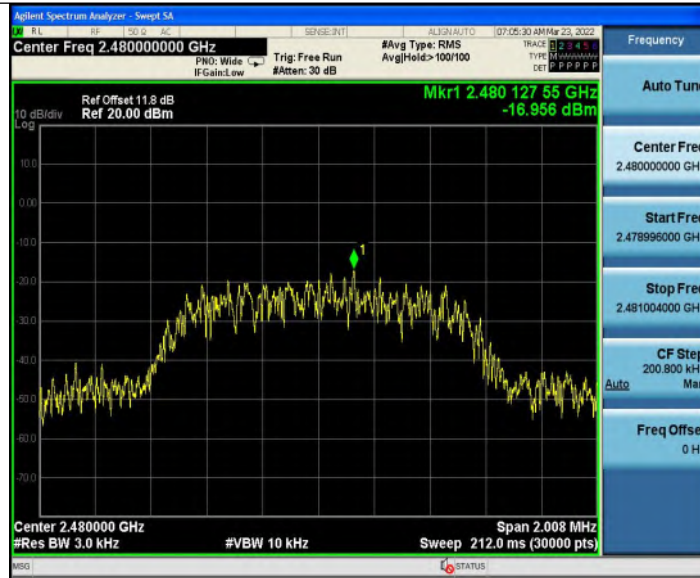




BLE\_1M\_Ant1\_2402



BLE\_1M\_Ant1\_2440



BLE\_1M\_Ant1\_2480



BLE\_2M\_Ant1\_2402



BLE\_2M\_Ant1\_2440



BLE\_2M\_Ant1\_2480

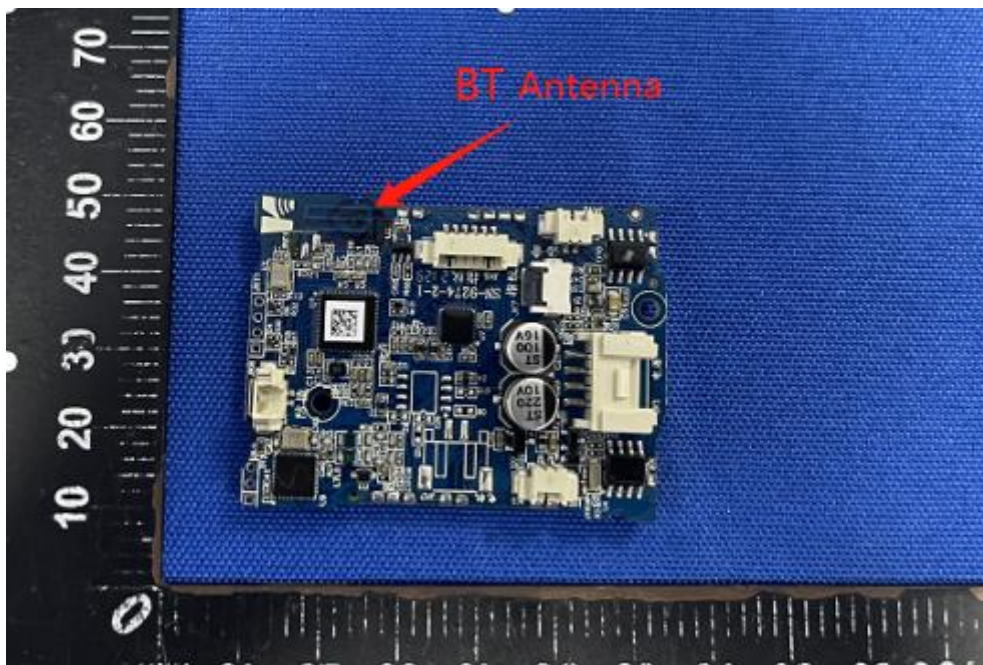
## 11 Antenna Application

### 11.1 Antenna Requirement

For intentional device, according to FCC 47 CFR Section 15.203, an intentional radiator shall be designed to ensure that no antenna other than that furnished by the responsible party shall be used with the device. And according to FCC 47 CFR Section 15.247 (b), if transmitting antennas of directional gain greater than 6dBi are used, the power shall be reduced by the amount in dB that the directional gain of the antenna exceeds 6dBi.

### 11.2 Result

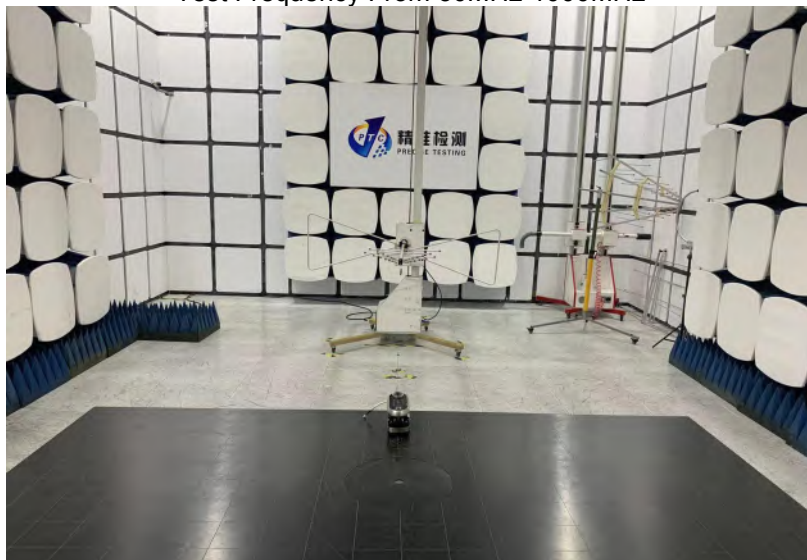
The EUT'S antenna, permanent attached antenna, is PCB Antenna. The antenna's gain is 0dBi and meets the requirement.



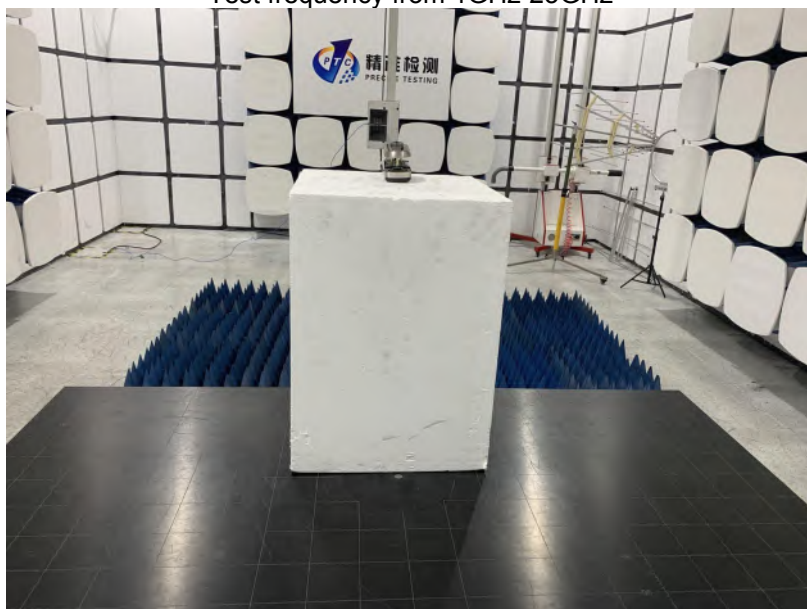


## 12 Test Setup

Radiated Spurious Emissions  
Test Frequency From 30MHz-1000MHz



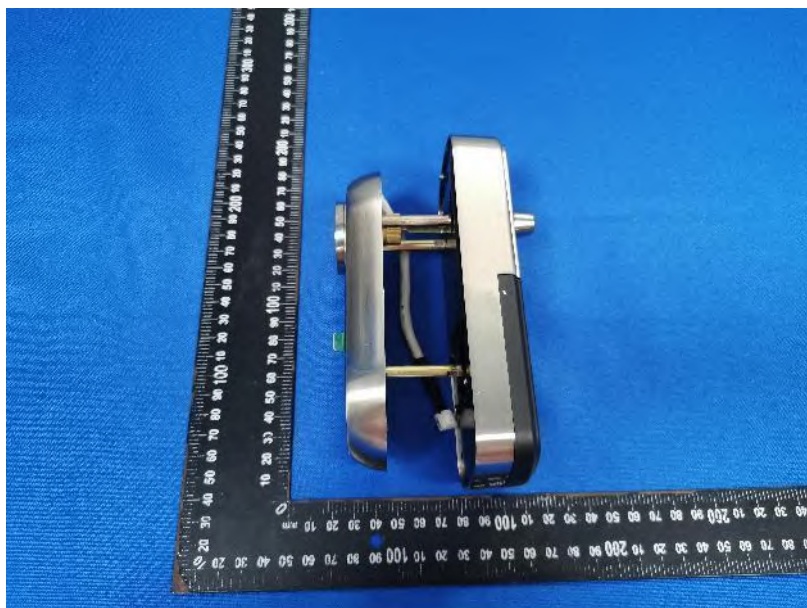
Test frequency from 1GHz-25GHz

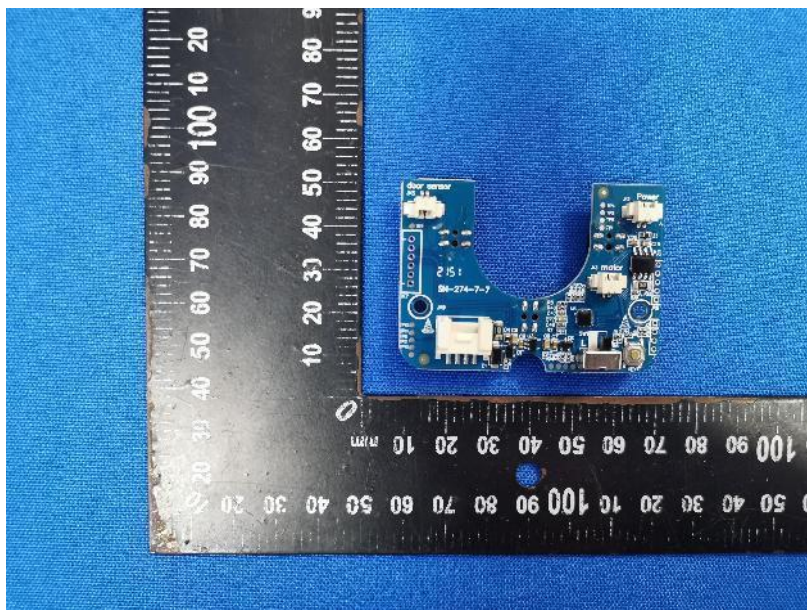
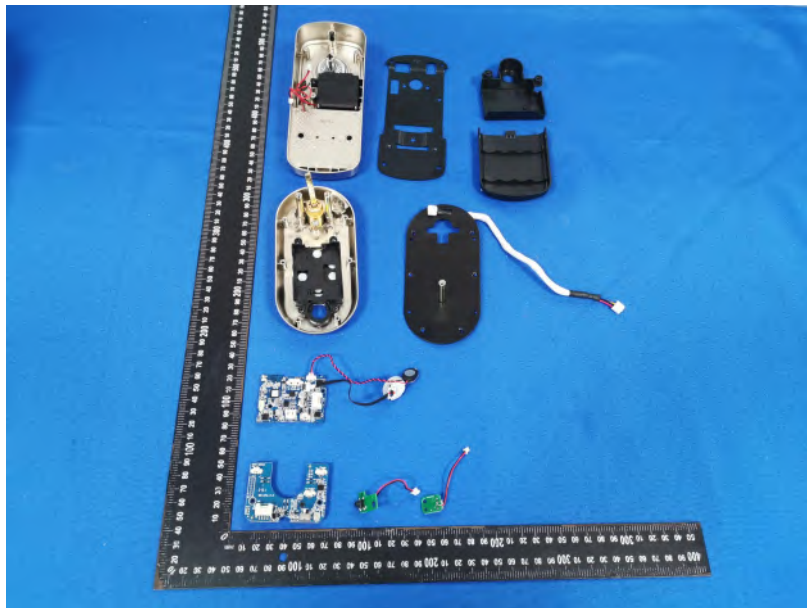


### 13 EUT Photos

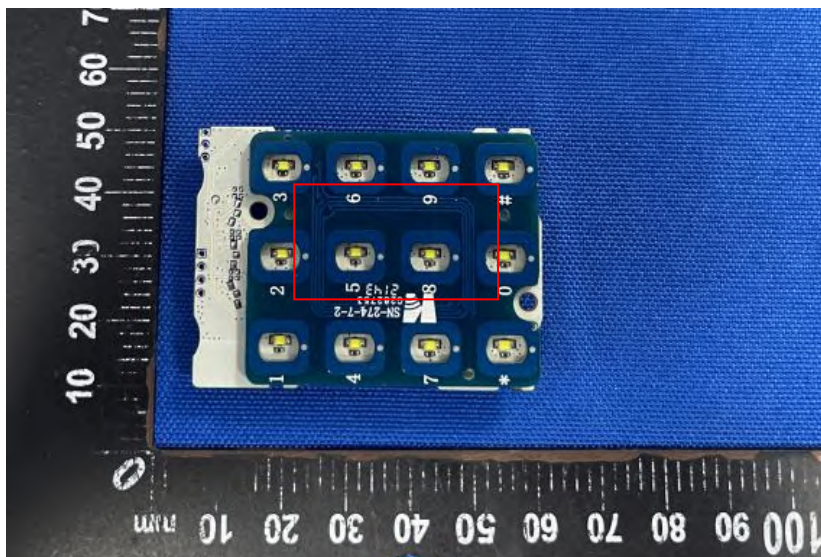
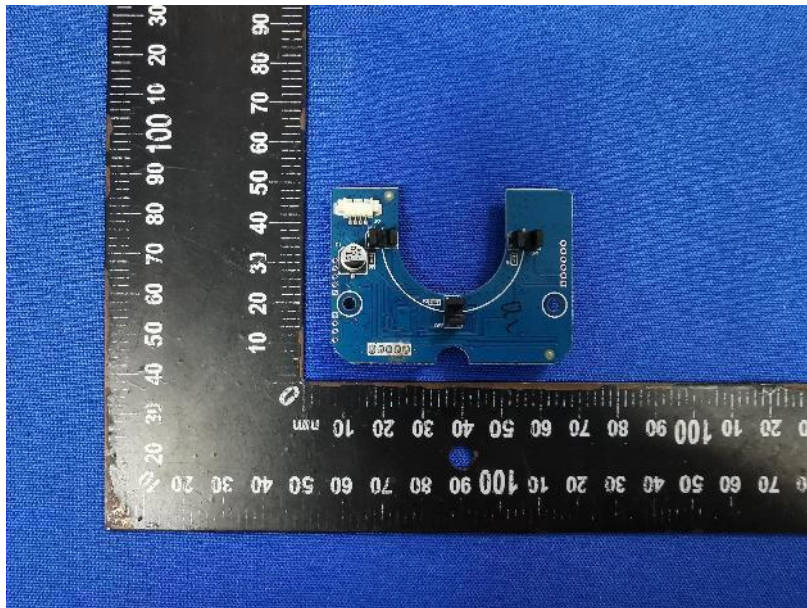






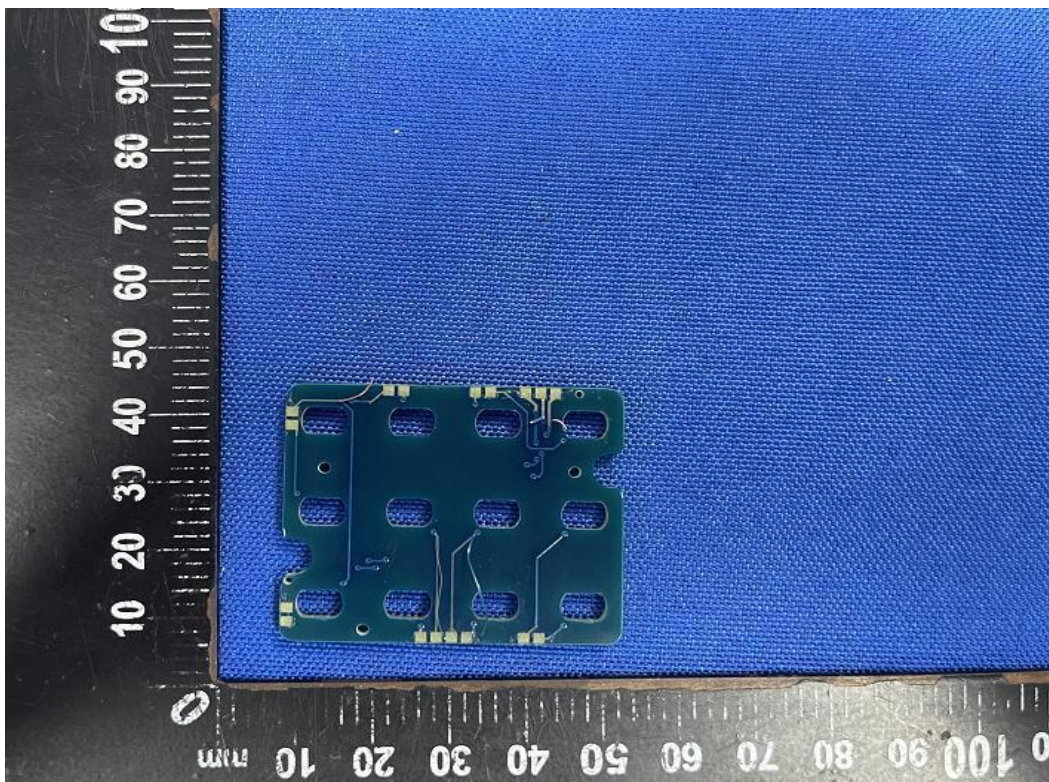
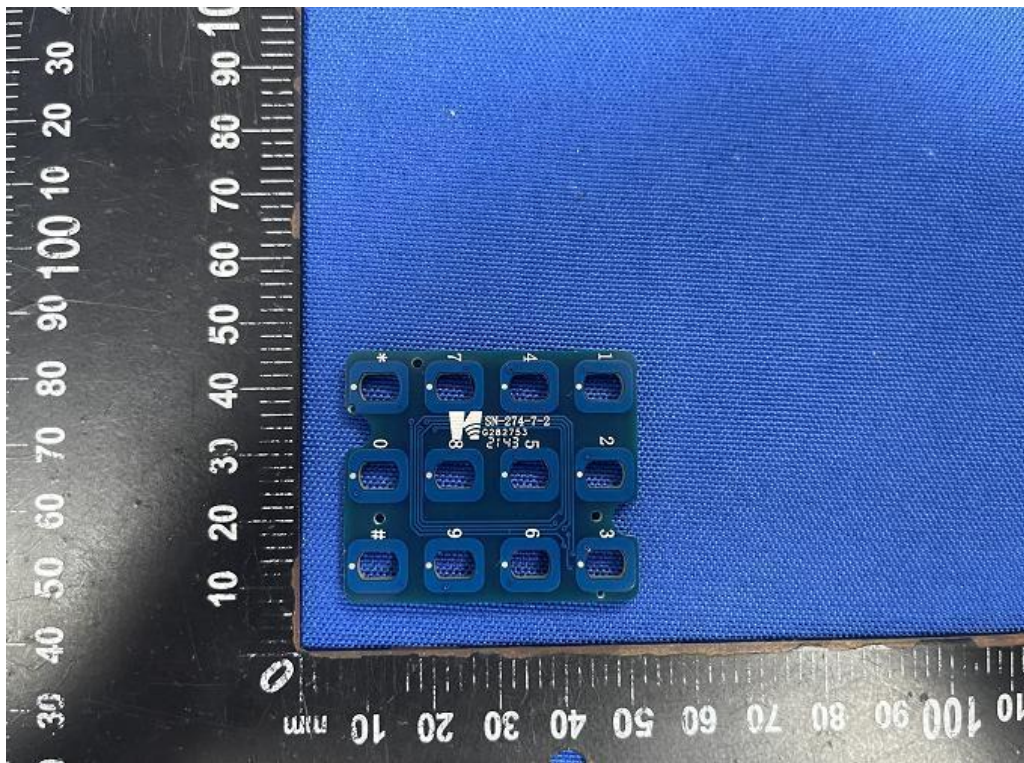




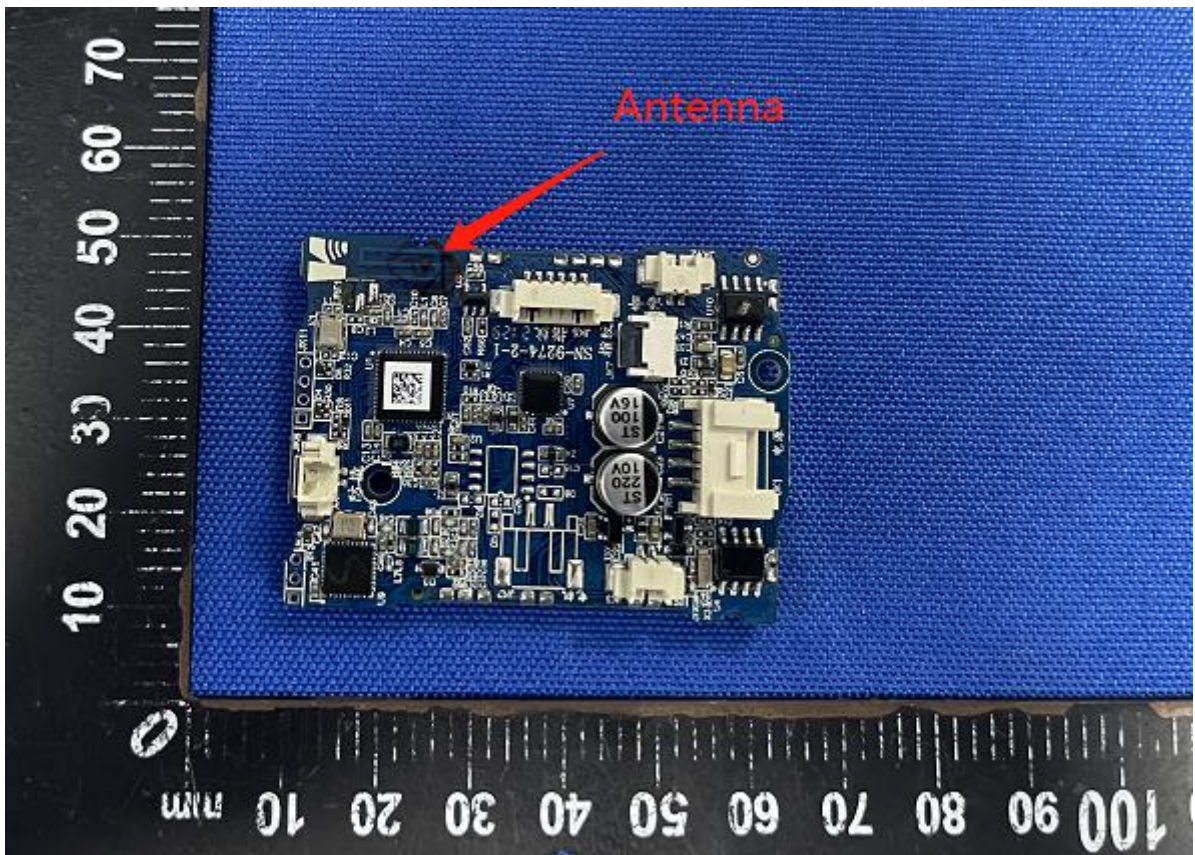


NFC antenna

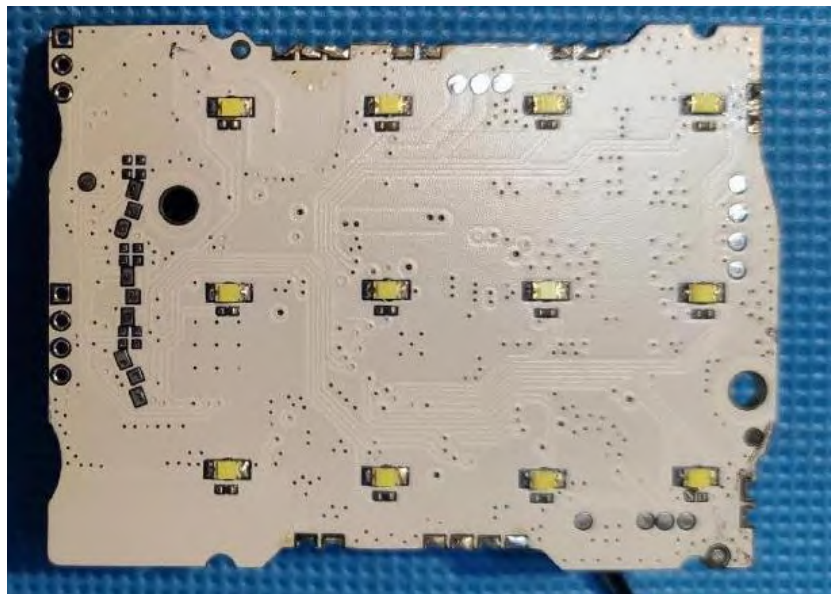
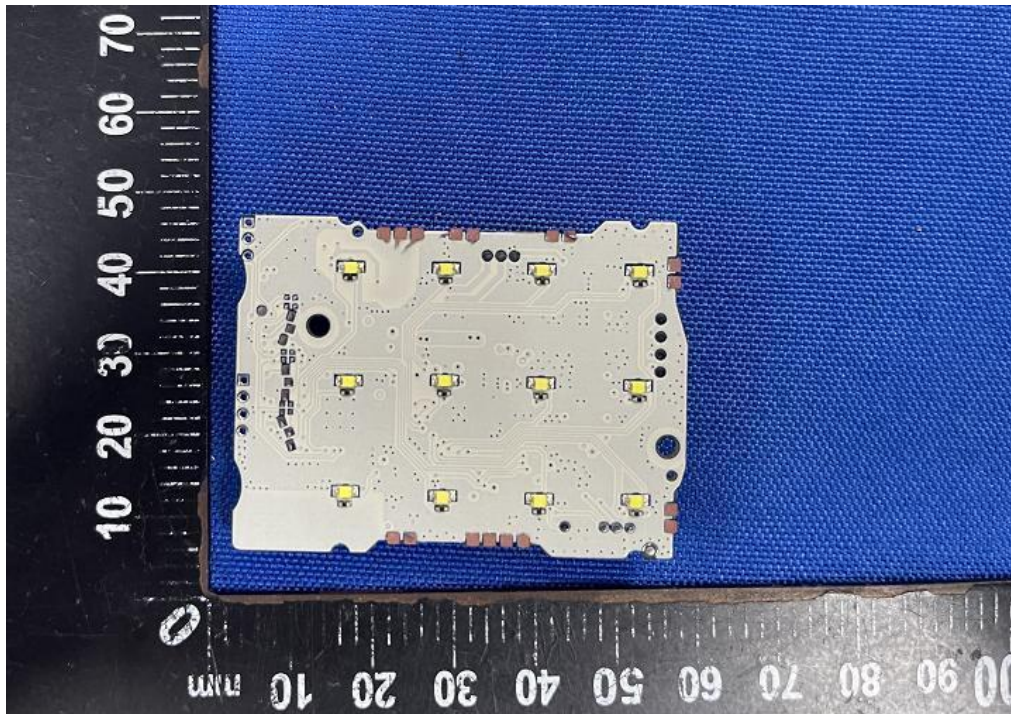








BT ANTENNA



\*\*\*\*\*THE END REPORT\*\*\*\*\*