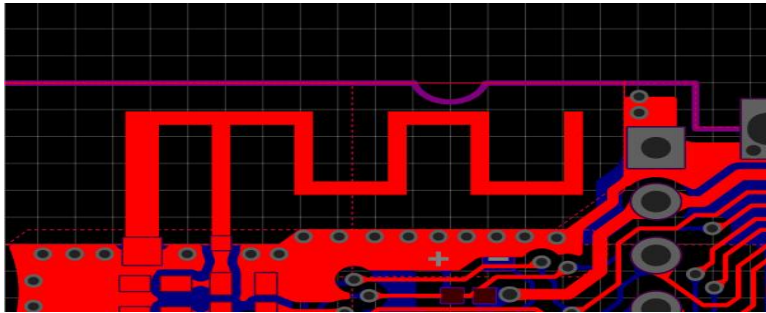


# Product specification

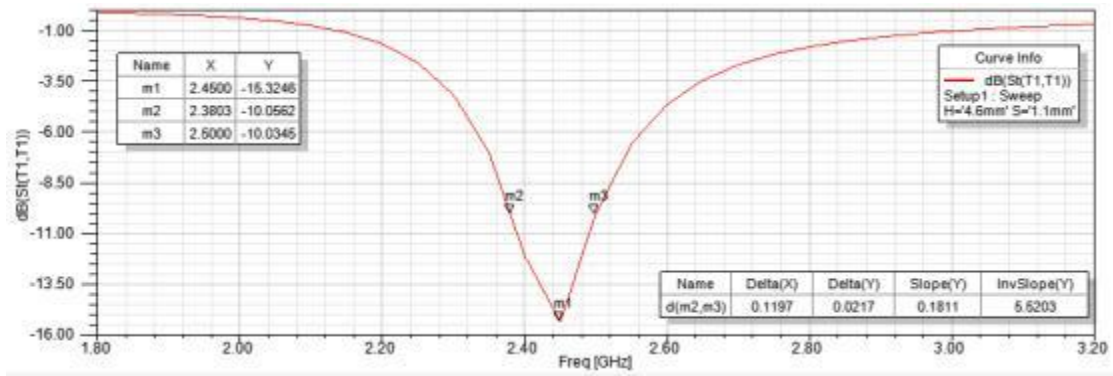
## 1. Technical indicators of products

Frequency Range (MHz)	2400~2500
Band Width (MHz)	100
Impedance ( $\Omega$ )	50
VSWR	1.91 MAX
Return Loss (dB)	-15.3
Peak Gain (dBi)	2
Polarization	Linear Vertical
Antenna Material	PCB
Operating Temp ( $^{\circ}\text{C}$ )	-20~65
Storage Temp ( $^{\circ}\text{C}$ )	-30~75

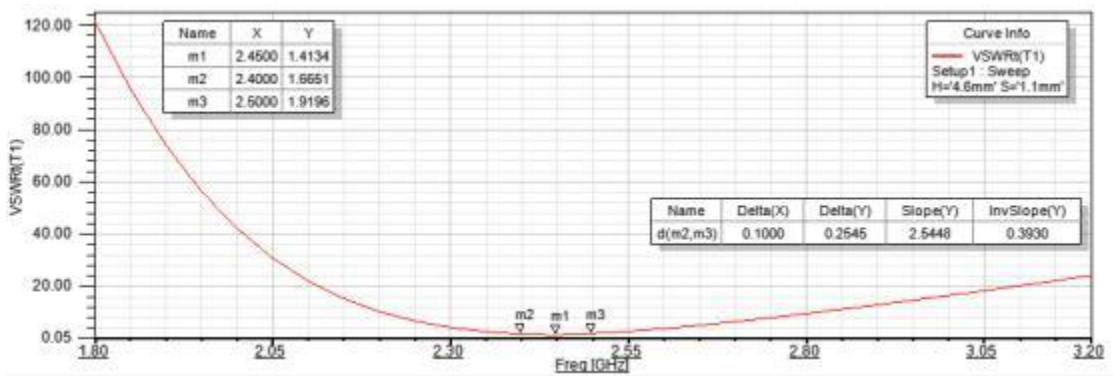
## 2. Product picture



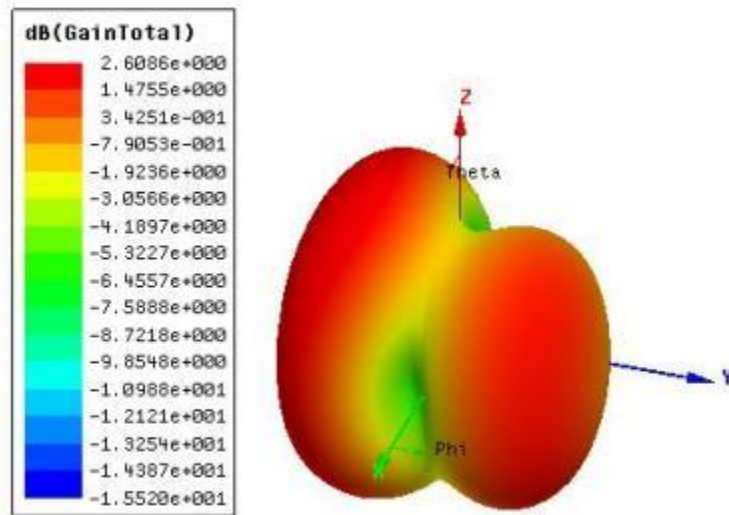
### 3. Return Loss



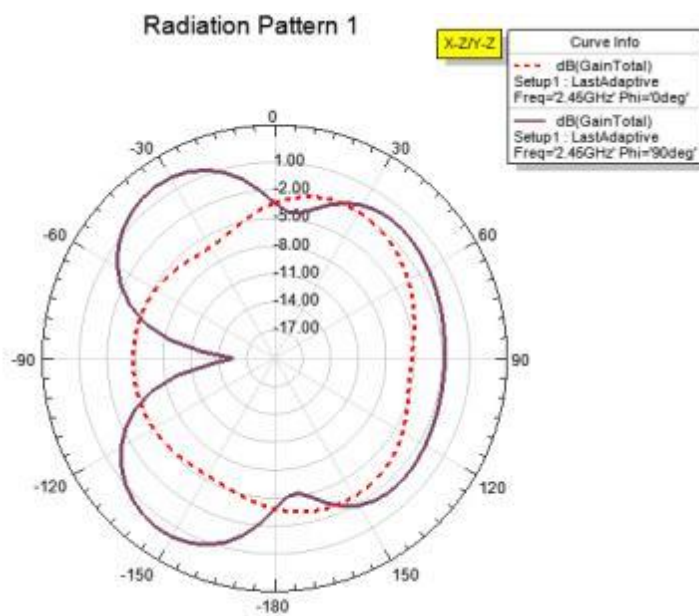
### 4. VSWR



## 6. 3D gain pattern



## 7. E,h plan



### Radiation Pattern 2

