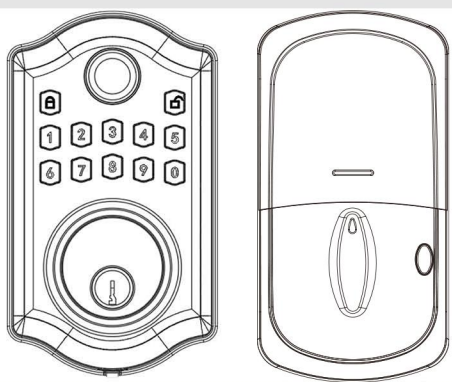
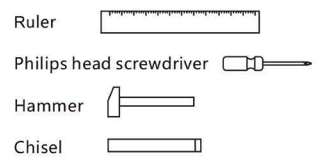


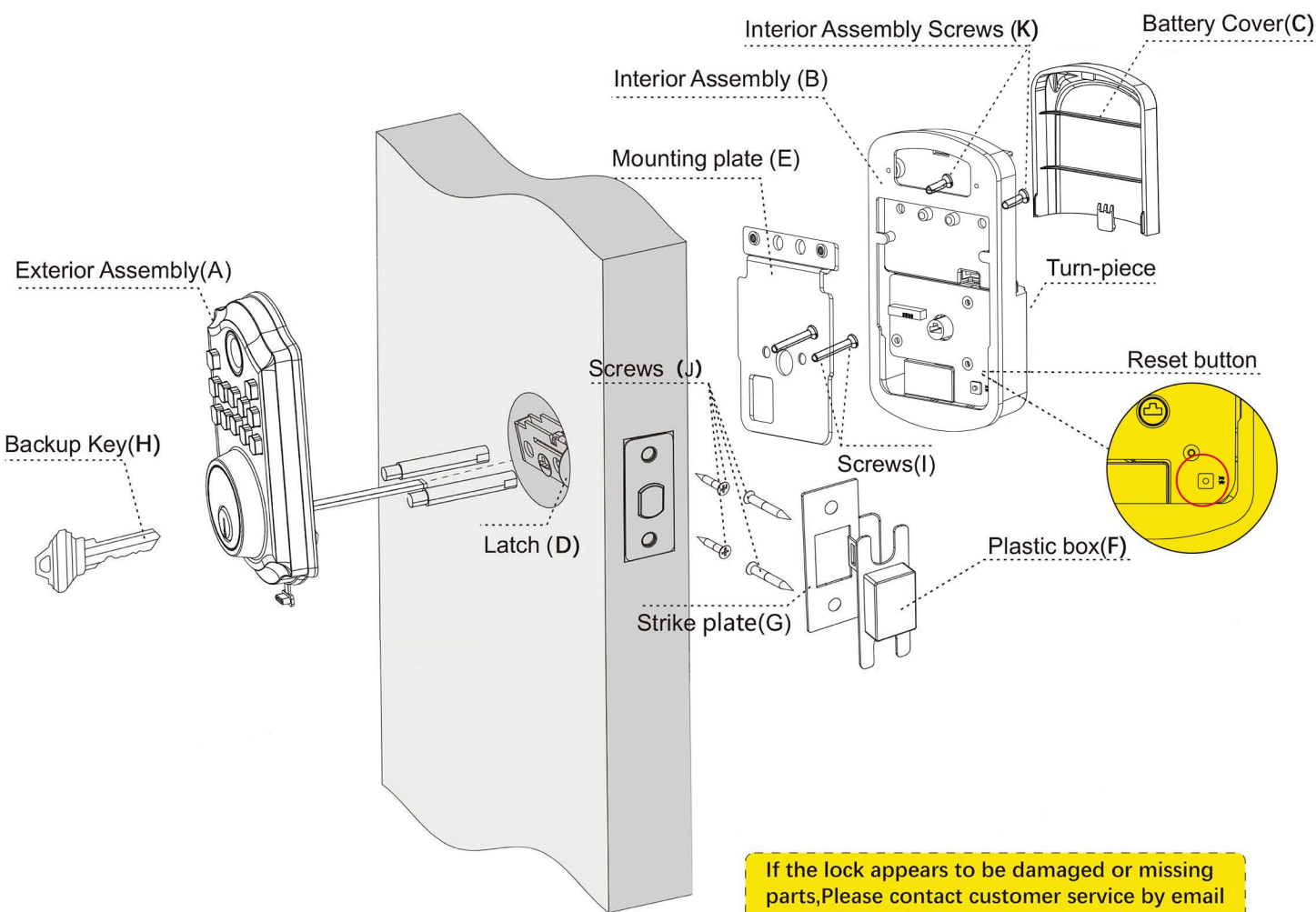
SMART DEADBOLT

Installation and User Guide

Required tools (not included)



What's in the box



If the lock appears to be damaged or missing parts, Please contact customer service by email for further assistance

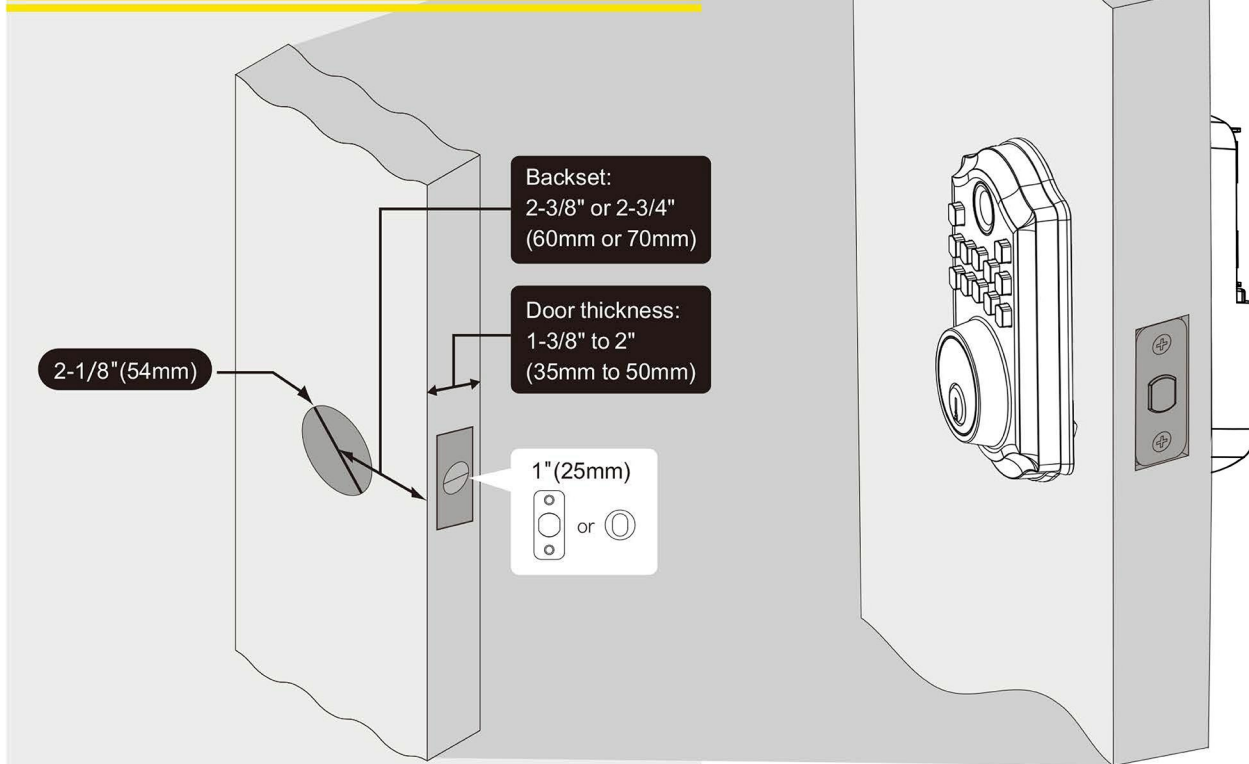
Parts List

A Exterior Assembly	B Interior Assembly	C Battery Cover	D Latch Bolt	E Mounting plate
F Plastic box	G Strike Plate	H Backup Key	I Mounting Plate Screws (Longer)	J Latch and Strike Screws
				K Interior Assembly Screws (Shorter)

Installation instructions

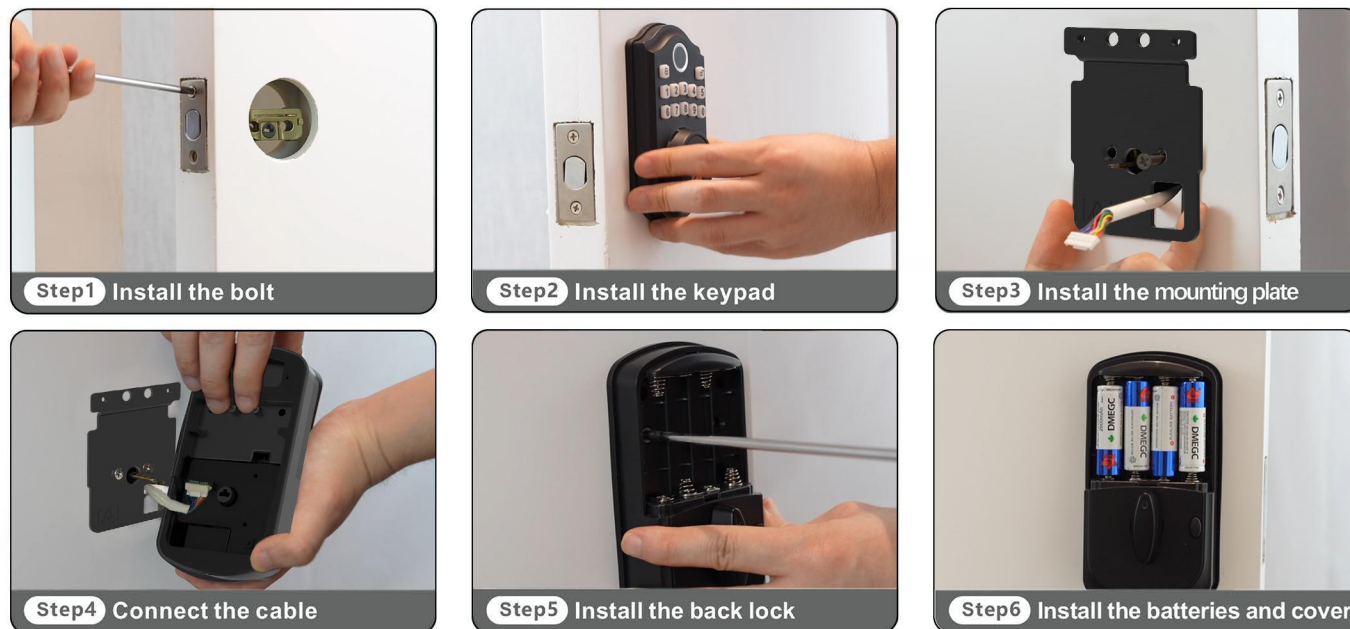
- Don't insert the key to the cylinder when installing the deadbolt!!!
 - Battery:
 - Use new and **NON**-rechargeable 4 AA batteries for the best use.
 - Don't load batteries until the lock is completely installed.
 - Adjust latch to insert horizontally.
- If you have any problems, don't hesitate to contact with us through customer service at the first time.

Before Installing the Lock, Please Check Door Jamb and Door Preparation.



Simple flowchart of installation

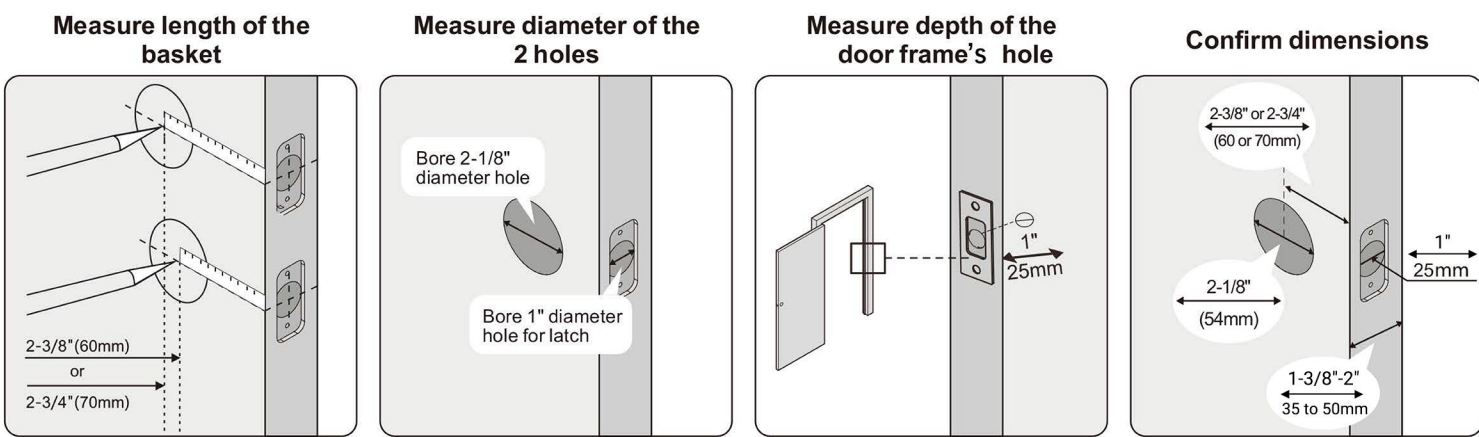
Please refer to the next section if you need a more detailed installation process.



1. Remove existing deadbolt

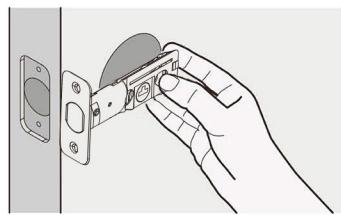
- Do not discard old lock + hardware until new Lock has been successfully installed.
- Remove the lock from the door, including the old latch.

2. Prepare the door and check dimensions

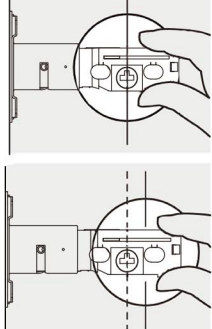


3. Install the latch and strike plate

A. Check backset and adjust the latch



Hold the latch in front of the door hole, with the latch facing flush against the door edge. Check if the slotted hole is centered?

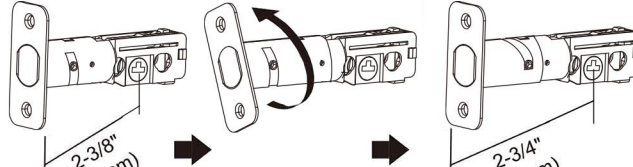


YES

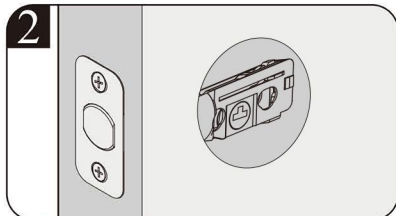
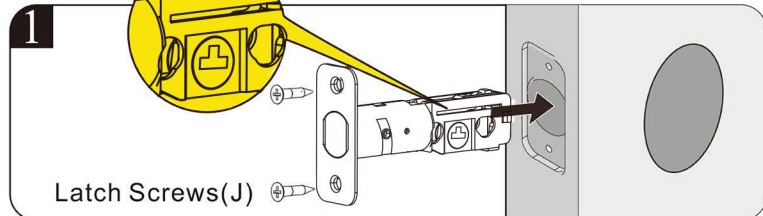
No adjustment is required. Proceed to next step.

NO

Slotted hole is NOT centered. Rotate and pull the latch as shown to extend latch.

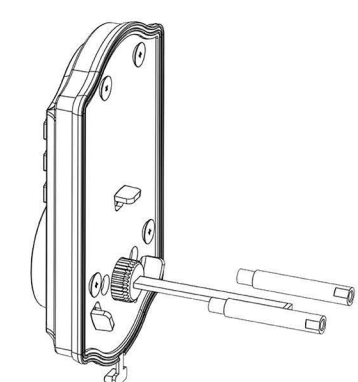


B. Install the latch

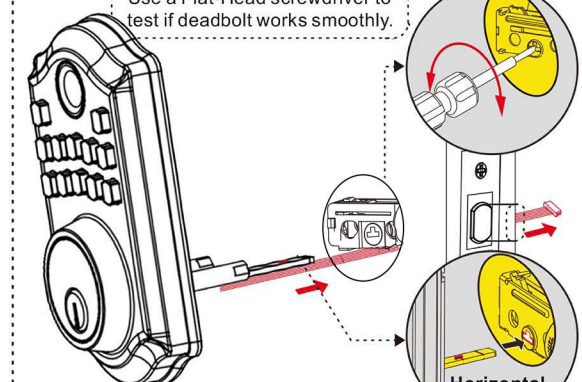


4. Install the exterior keypad and the interior assembly

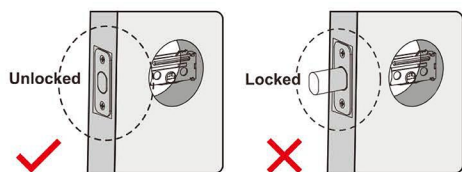
Install the exterior keypad step



Install exterior parts



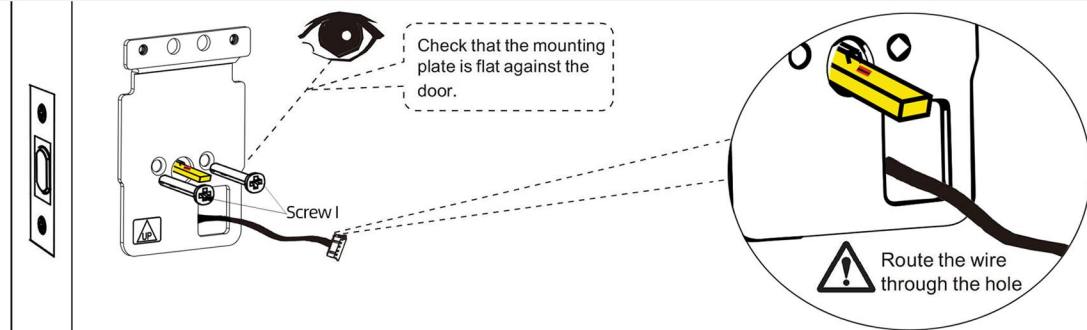
Keep the deadbolt unlocked



IMPORTANT: Before installation, make sure the latch is in the unlocked position.

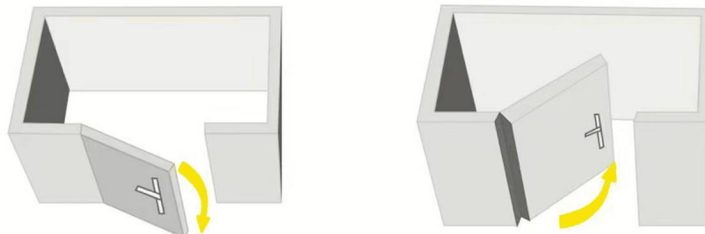
5. Install interior assembly

A. Mounting plate installation tips

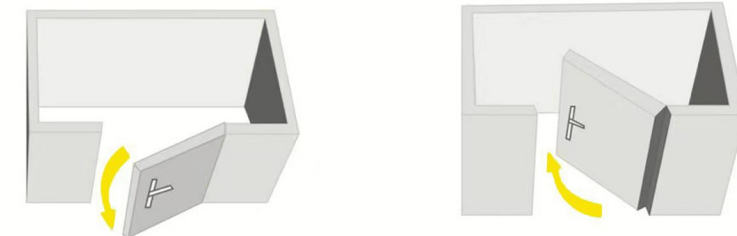


B. Door lock left/right direction

Left hand door: Hinge is on the LEFT



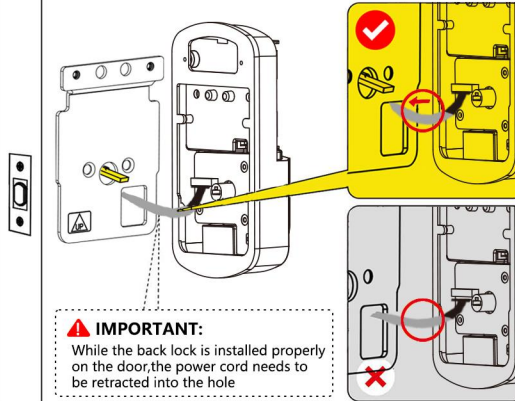
Right hand door: Hinge is on the RIGHT



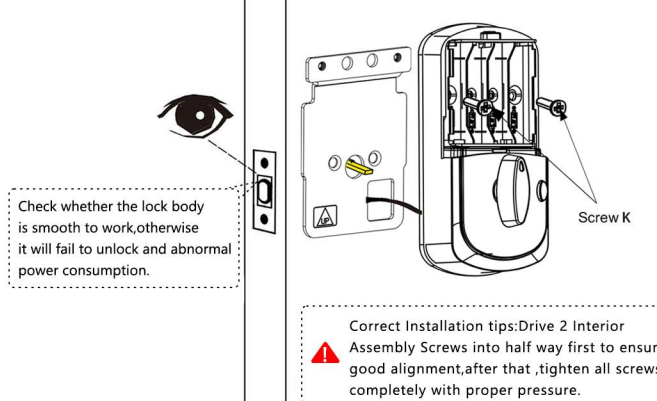
Adjust the rear lock knob to be vertical



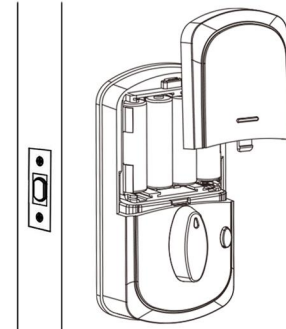
C. Insert IC port



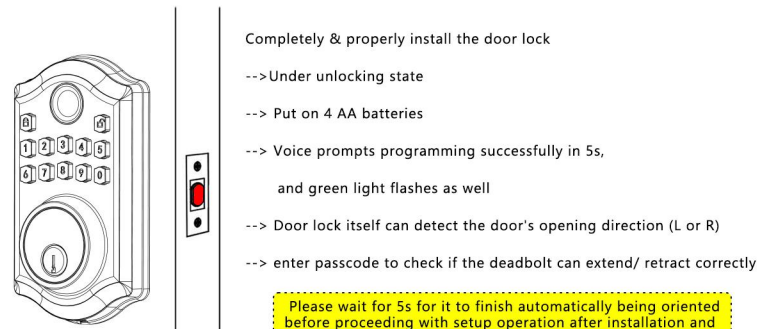
D. Check installation status



E. Install the batteries and cover



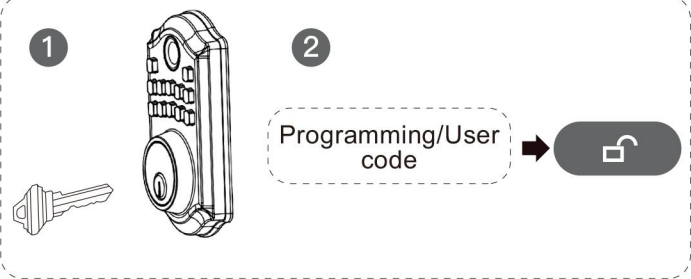
F. Detect door's opening direction



PROGRAMMING INSTRUCTION

1. How to use?

• Unlock the door from outside



• Indicator light signals

- Green:** A correct code was entered.
- Blue:** Programming in progress.
- Red:**
- An incorrect code was entered.
 - Programming error.
 - Low battery warning.

• Lock the door from outside

- Auto lock mode**
- **Auto lock mode is disabled by default, please turn Auto-lock on.**
 - In auto lock mode, the bolt will extend out automatically in 5/10/20/30/60 seconds after unlocking.
- Manual mode**
- Press "A" button on keypad to lock.

• Lock the door from inside

- Deadlock/Privacy Button**
- Privacy mode is disabled by default
 - All Entry Codes are disabled except the programming code
- Manual mode**
- Rotate the turn piece to lock position.



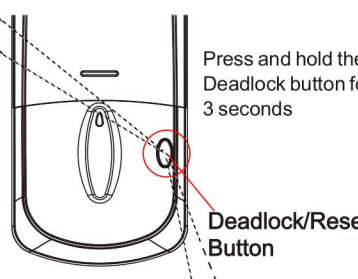
Fingerprint register steps

Tips:
Register (add) complete fingerprint area including up, down, left and right edges. Move finger slightly each time when programming to improve accuracy.



2. Privacy mode

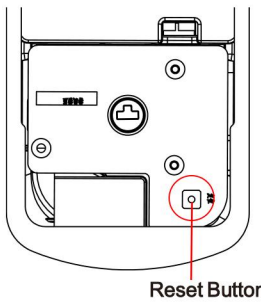
- Reset mode**
- Step1.** Remove the battery.
- Step2.** Long press the "Deadbolt" button, put in 4 AA batteries, the blue light flashes.
- Step3.** Enter "000 + A" and the green light flashes means the reset is successful.



Deadlock Button
After the Deadlock function is turned on, only the Programming Code can unlock, and all user code cannot unlock (use the Programming Code to unlock the lock will remove the Deadlock restriction).

3. Restore factory settings

- Delete all user codes, including master code:
- Use a screwdriver to remove the interior assembly.
 - Press and hold the reset button for 5 seconds until voice prompt & green light flashing, the master code will return to the manufacturer default code "123456".



After restore factory, Change the master passcode as soon as possible! because of the master passcode can unlock the door.

4. Features

- Four ways to access: code, key, fingerprint and app.
- Low power consumption, 4 AA batteries can work for 1 year or 5000 times.
- Backlit keypad for use in low light environments.
- 1 Programming Code and 300 user codes (Including 50 Fingerprints).
- Built-in disguise feature to protect your codes from prying eyes.
- Low battery warning indication.

5. Setting definitions

Settings	Default Setting	Definitions
Programming Code	123456	<ul style="list-style-type: none">• It's required to change it to a code of your own before programming.• In manually mode, Long press the "A" to lock.• 4 - 9 digits in length, Must be different from all other existed User Codes.• If you forget the master passcode, you can reset the lock to factory settings, which restores the default programming code.
Auto Lock	Disable	<ul style="list-style-type: none">• This feature is optional and can be turned off.• when enabled, the lock will automatically re-lock after 5/10/20/30/60 seconds.• After a successful code entry or manual unlock with the key, the lock will automatically re-lock after each unlock to keep your home secure.
Manually Lock	Hold "A"	<ul style="list-style-type: none">• If auto-lock is not set on, you need to do the locking manually.
Silent Mode	Disable	<ul style="list-style-type: none">• The beep sounds when pressing keypad can be muted.
Privacy Button	Disable	<ul style="list-style-type: none">• Privacy mode is disabled by default.• When enabled, activate Privacy mode by pressing the privacy button for 3 seconds to put the lock in do-not-disturb mode (All Entry Codes are disabled except the programming code).
Wrong Code Entry Limit	Enabled	<ul style="list-style-type: none">• Once the wrong code entry limits reach to 5 attempts, the lock will shutdown (flashing RED) for sixty (60) seconds.
Peek-proof digital keypad	Enabled	<ul style="list-style-type: none">• Prevent code exposure to strangers by entering random digits. <div><div>9861123456268</div><div>Password</div><div>Random digits</div></div>
User Code	Disable	<ul style="list-style-type: none">• The lock comes out without any default User Codes.• Must be different from the master code and other user codes.• Up to 300 possible User Codes can be stored in the lock at one time.

Warranty

Lifetime Limited Mechanical and Finish Warranty and 1-Year Limited Electronics Warranty Subject to the terms and conditions of the warranty. We extend a lifetime limited mechanical and finish warranty and a one-year limited electronics warranty to the original consumer user ("Original User") of our brand product against defects in material and workmanship, as long as the original User occupies the residential premises upon which the product was originally installed.

Warning

This manufacturer advises that no lock can provide complete security by itself, this lock maybe defeated by forcible or technical means or evaded by entry elsewhere on the property. No lock can substitute for caution, awareness of your environment, and common sense. Builder's hardware is available in multiple performance grades to suit the application. In order to enhance security and reduce risk, you should consult a qualified technician or other security professional.

6. Troubleshooting

Question	Suggested Action
The battery indicator keeps flashing.	<ol style="list-style-type: none">1 The batteries are getting low. Please replace with 4 AA new batteries for the best performance (Alkaline batteries, do not use recharge batteries).
Keypad not responding.	<ol style="list-style-type: none">1 Make sure the batteries are installed properly.2 The batteries are getting low if the battery indicator keeps flashing.3 Please replace with four new batteries for the best performance (Alkaline batteries, do not use recharge batteries).4 Make sure the cable is well-connected to the port, and was not damaged during installation.5 Make sure the lock has been set up and complete the bolt direction determination.
Forgot master code/Default programming code is incorrect.	<ol style="list-style-type: none">1 Press the reset button on the circuit board to erase all codes. Once the resetting work is complete, all passcodes will be erased and the programming code will return to the default programming code 123456.
Lockset is not able to unlock/lock by keypad.	<ol style="list-style-type: none">1 Make sure you have entered the correct User Code.2 The battery is low if the battery indicator light keeps flashing. Please replace it with four new batteries.3 Make sure the cable is firmly connected.4 Check the cable for any damage that may have occurred during installation.5 Make sure the batteries are properly installed (Alkaline batteries, do not recharge batteries).6 Check the strike plate to make sure it is properly aligned and clear so the bolt can freely move in the hole.
The lockset locks when I enter my code and unlocks when I press the lock button/ the auto set was set to open the door.	<ol style="list-style-type: none">1 Make sure the bolt latch is in the unlocked position.2 Do not have any key in the cylinder during installation.3 Make sure the turn piece is inserted horizontally.

FCC Caution.

This device complies with part 15 of the FCC Rules. Operation is subject to the following two conditions:

(1) This device may not cause harmful interference, and (2) this device must accept any interference received, including interference that may cause undesired operation.

Any Changes or modifications not expressly approved by the party responsible for compliance could void the user's authority to operate the equipment.

Note: This equipment has been tested and found to comply with the limits for a Class B digital device, pursuant to part 15 of the FCC Rules. These limits are designed to provide reasonable protection against harmful interference in a residential installation. This equipment generates uses and can radiate radio frequency energy and, if not installed and used in accordance with the instructions, may cause harmful interference to radio communications. However, there is no guarantee that interference will not occur in a particular installation. If this equipment does cause harmful interference to radio or television reception, which can be determined by turning the equipment off and on, the user is encouraged to try to correct the interference by one or more of the following measures:

- Reorient or relocate the receiving antenna.
- Increase the separation between the equipment and receiver.
- Connect the equipment into an outlet on a circuit different from that to which the receiver is connected.
- Consult the dealer or an experienced radio/TV technician for help.

*RF warning for Mobile device:

This equipment complies with FCC radiation exposure limits set forth for an uncontrolled environment.

This equipment should be installed and operated with minimum distance 20cm between the radiator & your body.

7. App Operation Guide

We recommend using app because it's easier to set and more convenient for future use.

1. Create an Account

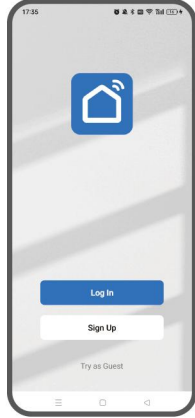
Android: Search Smart Life on Google Play.

iOS: Search Smart Life on the App store.

OR: Scan the QR code on the right to download Smart Life App.

Sign up and log into your account with an email address.

Smart Life App

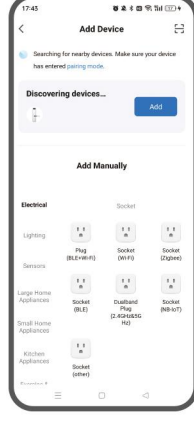
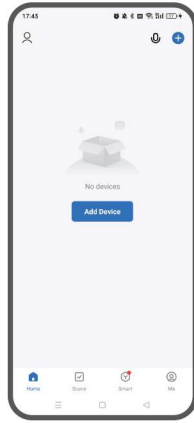


2. Pair Your Phone with the Smart Lock

Step 1: Press any key to wake up the lock, you will hear a voice prompt "Please add Bluetooth Administrator". If not, please reset the lock. **Tap Add Device.**

Step 2: Add the lock discovered.

Step 3: Name the lock and Tap Done.



3. Change the Admin Passcode

Once the lock and your phone are paired, the default admin passcode 123456 is invalid.

Tap **Member Management**→**Admin**→**Add Code**→Enter a 6-9 digit password and set a code name.

Note: The first code you set is the admin passcode, it can be changed or deleted.

4. Set Fingerprints (up to 50)

Tap **Member Management**→**Admin**→**Add Fingerprint**→Follow the on-screen instructions to add a fingerprint.

5. Auto Lock

Settings→**Auto Lock Delay** (Change the interval time as needed)

Settings→**Remote Unlock**

